



U WIFI 1.0 (-P/-E) User Manual

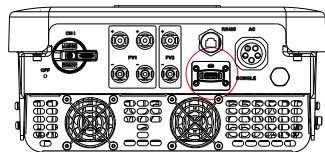
Read this user manual carefully prior to use.

1. INSTALLATION



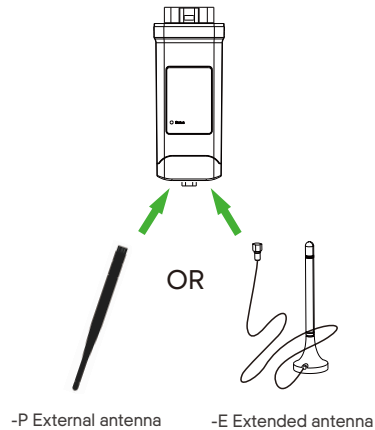
Ensure all power has been turned off at least 5 minutes prior to installation.

- Remove the cover of DONGLE port at the bottom of the inverter. Ready to install your U WiFi.



- For the -P/-E version of U WiFi, screw the antenna to the end of the shell.

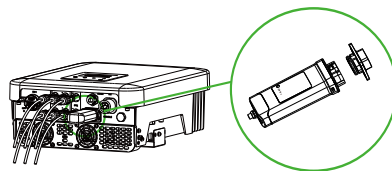
01



*Antenna type is divided into external antenna and extended antenna. It is already selected when you purchase U WiFi.

- Plug the U WiFi into the correct port of inverter.

02



Note that the side with the QR code is on the top and the direction of the button should be the same.

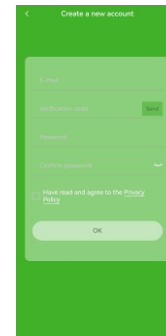
2. SEMOOKiiCloud Registration

- SEMOOKiiCloud Registration
Step 1: Use your smart phone to scan following QR code or search for the keyword “SEMOOKiiCloud” in browser to download the Monitoring App.



03

- Step 2: Touch the Setting button at upper left corner of the Monitoring App to choose language.
- Step 3: Touch “Create a new account” at the bottom of Monitoring App.
- Step 4: Fill in your registration Email, get the Verification code, input your password to create the account.



04

- Wi-Fi Connection
Step 1: Login your account.
Step 2: Click “+” to create your site.
Step 3: Fill in site information and add device.



- Step 4: Setup your internet Wi-Fi connection. Start to configure the device network.

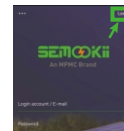


5 GHz network is not supported.

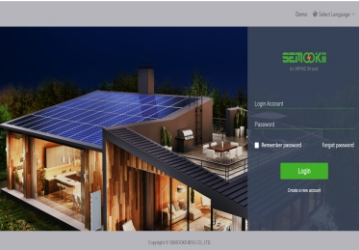


05

- Local Mode
Use your smart phone to connect the SEMOOKii Wi-Fi signal (Wifi_Sxxxxxxx). Then touch Local and type in password (initially same as the Registration No.) to access the Local Mode in the Monitoring App.
*Visit the local password setting instruction on www.semookii-ehoo.com/wifiSetting/



- Visit our Website for warranty
- Step 1: Ensure that your computer or laptop is connected to a network.
- Step 2: Open a browser and enter www.semookii-ehoo.com/
- Step 3: Select your display language, then create a new account.



- Step 4: Complete registration, login, add site and other related operations according to the guidelines of the User guide.
- Step 5: Click the Warranty Manage and add your installation information to get warranty for your devices.

TECHNICAL DATA

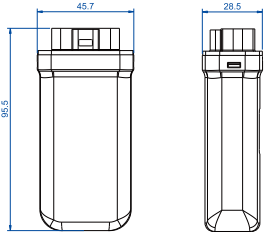
Product Name	U WiFi
Model	U WiFi V1.0 (-P/-E)
Supply Voltage	5V DC
Rated Power	1.3 W
EIRP Power	17.41 dBm(Measured Max. Average)
Frequency	2.4 GHz
Antenna Gain	3 dBi
Antenna Type	IPEX
Degree of Protection	IP 65
Operating Temperate	-40~85 °C
Wireless Mode	802.11 b/g/n
Dimension	95.5*45.7*28.5 mm
Dimension (-P/-E)	112*45.7*28.5 mm
Weight	50 g (-P/-E <107g)
WiFi configuration	
IP address	192.168.10.10

WARRANTY REGULATION AND LIABILITY

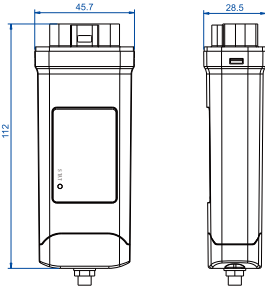
- Terms and Conditions
- SEMOOKii grants a standard 24-month warranty. The terms of this warranty begin from the date marked on the purchase invoice. SEMOOKii will only perform warranty service when the faulty unit is returned to SEMOOKii along with a copy of the invoice and proof of purchase issued by the dealer. In addition, the type label of the unit must be fully legible. If these requirements are not fulfilled, SEMOOKii reserves the right to deny warranty service.
- Exclusion of Liability
- Warranty claims are excluded for direct or indirect damage due to:
- Use of unit in ways not intended, improper or substandard installation, improper operation and unauthorized modification to the units, or repair attempts.
 - Missing warranty card and serial number.
 - Operating the units with defective protective equipment.
 - Influence of foreign objects and force majeure.
 - Inadequate ventilation.
 - Non-observance to relevant safety instructions.

APPEARANCE AND DIMENSIONS


U WiFi V1.0:



U WiFi V1.0 -P/-E:



SAFETY INSTRUCTIONS

- Prior to installation, ensure all power going to the inverter has been cut off.
 - Keep away from flammable, explosive materials.
 - Do not dismantle or scrap by force.
 - Children should be supervised to ensure that they do not play with this appliance.
-  Indicates that the product must not be processed with household waste. It must be brought to an electric and electronic waste collection point for recycling and disposal. By ensuring the appropriate disposal of this product you also help in preventing potentially negative consequences for the environment and human health. The recycling of materials helps preserve our natural resources. For further information regarding the recycling of this product, please contact your municipality, local waste disposal center or the store where the products was purchased.

This device complies with part 15 of the FCC Rules. Operation is subject to the following two conditions:

(1) This device may not cause harmful interference, and

(2) this device must accept any interference received, including interference that may cause undesired operation. Any Changes or modifications not expressly approved by the party responsible for compliance could void the user's authority to operate the equipment.

NOTE: This equipment has been tested and found to comply with the limits for a Class B digital device, pursuant to part 15 of the FCC Rules. These limits are designed to provide reasonable protection against harmful interference in a residential installation. This equipment generates, uses and can radiate radio frequency energy and, if not installed and used in accordance with the instructions, may cause harmful interference to radio communications. However, there is no guarantee that interference will not occur in a particular installation. If this equipment does cause harmful interference to radio or television reception, which can be determined by turning the equipment off and on, the user is encouraged to try to correct the interference by one or more of the following measures:

- Reorient or relocate the receiving antenna.
- Increase the separation between the equipment and receiver.
- Connect the equipment into an outlet on a circuit different from that to which the receiver is connected.
- Consult the dealer or an experienced radio/TV technician for help.

RF exposure warning

This equipment must be installed and operated in accordance with provided instructions and the antenna(s) used for this transmitter must be installed to provide a separation distance of at least 20 cm from all persons and must not be co-located or operating in conjunction with any other antenna or transmitter. End-users and installers must be provide with antenna installation instructions and transmitter operating conditions for satisfying RF exposure compliance.

PROOF OF PURCHASE

Retain this page as proof of your purchase. See warranty registration notice for more details.

Name Country

Phone Number Zip Code

Email

Address

Product Serial Number

Date of Commissioning

Installation Company Name

Date of Delivery

Signature

SEMOOKII BESS CO., LTD.

ADD No. 2399 Fazhan Ave., Haimen Port New Area, Jiangsu 226156, China

Tel +86 21-60970158

EMAIL sales@semookii.com

WEB www.semookii.com

