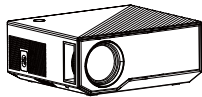


## MINI Projector GC05

### User Guide



Due to continuous improvement, actual product may different from the manual, manual is for reference only.

After Sales Email support: @tmwett.com

## English

### 1. Safety Notice:

- 1.1 Please read use manual carefully before you use projector.
- 1.2 To prevent the projector from overheating and ensure its reliable operation, it is recommended to install the projector in a well-ventilated place. For example, don't place the projector on a messy coffee table, sofa, bed, etc. Do not place the projector in a narrow space with poor air circulation, such as a bookcase or closet.
- 1.3 Do not use this projector near water or wet places. To reduce the risk of fire and/or electric shock, do not expose this projector to rain or damp.
- 1.4 Do not install this product near heat sources, such as radiators, heaters, stoves or other heat-generating equipment.
- 1.5 Use a dry cloth when cleaning.
- 1.6 Use only the connectors/accessories specified by the manufacturer.
- 1.7 If this machine is physically damaged or used carelessly, please do not continue to use this machine. Such as the power cord is damaged, liquid spills on the projector, the projector suffers from rain or damp, foreign objects fall into the projector or internal components are loose, etc.
- 1.8 Do not let objects or liquids enter the projector. Otherwise, it may come into contact with dangerous voltage points and short-circuit components, resulting in fire or electric shock.
- 1.9 Pay attention to the safety sign on the projector housing.
- 1.10 This machine should only be repaired by relevant service personnel.
- 1.11 Before cleaning the product, turn off the power and unplug the power cord from the AC outlet. Wipe the host shell with a soft dry cloth dipped in neutral detergent. If this product is not used for a long time, unplug the power plug from the AC outlet.
- 1.12 Do not block the slots and openings for ventilation on the equipment.
- 1.13 Do not use it under the following conditions: extremely hot, cold or humid environment; an area susceptible to a lot of dust and dirt; Near any equipment that generates a strong magnetic field; direct sunlight.
- 1.14 When using this product, please keep it out of the reach of children and pets to prevent damage caused by the temperature of the device.
- 1.15 Do not look directly into the lens of the projector when using this projector. Bright light may harm your eyes.

### Warning tips:

Please follow all warnings, precautions and recommended maintenance items in this user guide.

所有英文字体均是Arial字体

- 1.1 Warning-For children under 18 months, it is forbidden to use this product. Children under 18 months should use this product in the presence of parents or adults to avoid accidents.
- 1.2 Warning-Do not look directly at the projector lens when the light bulb is on. Bright light may hurt your eyes.
- 1.3 Warning-To reduce the risk of fire or electric shock, do not expose this projector to rain or damp.
- 1.4 Warning-Do not open or disassemble this projector to avoid electric shock.
- 1.5 Warning-Before changing the bulb, please completely cool the unit.
- 1.6 Warning-When turning off the projector, make sure to finish the heat dissipation process before unplugging the power cord. The projector needs 30 seconds to cool down.

**FCC Warnings:**  
This device complies with part 15 of the FCC Rules. Operation is subject to the following two conditions: (1) this device may not cause harmful interference, and (2) this device must accept any interference received, including interference that may cause undesired operation. Any changes or modifications not expressly approved by the party responsible for compliance could void the user's authority to operate the equipment.

NOTE: This equipment has been tested and found to comply with the limits for a Class B digital device, pursuant to Part 15 of the FCC Rules. These limits are designed to provide reasonable protection against harmful interference in a residential installation. This equipment generates, uses and can radiate radio frequency energy and, if not installed and used in accordance with the instructions, may cause harmful interference to radio communications. However, there is no guarantee that interference will not occur in a particular installation. If this equipment does cause harmful interference to radio or television reception, which can be determined by turning the equipment off and on, the user is encouraged to try to correct the interference by one or more of the following measures:

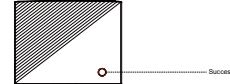
- Reorient or relocate the receiving antenna.
  - Increase the separation between the equipment and receiver.
  - Connect the equipment into an outlet on a circuit different from that to which the receiver is connected.
  - Consult the dealer or an experienced radio/TV technician for help.
- To maintain compliance with FCC's RF Exposure guidelines, this equipment should be installed and operated with minimum 20cm distance between the radiator and your body. Only use the supplied antenna.

### 2. Preparation before Light on

- 2.1 As following picture, connect the power Cable.



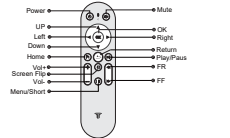
- 2.2 When power indicating lamp lighting, the equipment processing power.



### 3. Power on/Power off

Press button on projector or remote control to switch on the projector.

### 4. Remote Control Introduction



## 6. User Interface

After projector switched on, following UI will appear after 2-5s starting pictures flash.



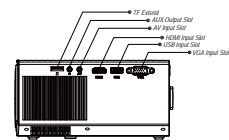
## 6. Focus

当您使用投影机在墙上投射时，您可以通过按下遥控器上的方向键来调整投影机的焦距，直到您看到清晰的图像为止。（参见图 5.1.1）



## 7. Connection

7.1 Connection Introduction



**7.2 Overview**  
Press the "Power on/Off" button, it will enter the main interface after the power on/logo appeared for a few seconds.  
Main Interface Include  
Pre-install application



Parallel Screen Mirroring between projector and phone, ipad, android phone, android tablet, other electronic devices.

**7.3 Local Player**  
Connect the USB flash disk driver to the projector and open local player with the remote control,

then select local disk. USB flash disk driver to open (video, pictures, music and all files) select the file you want to open, it will be light around, then press OK to play, press the return key to exit.

Local Player support format as following:

Support Format	Video	Audio	Picture
Video	MPEG-1/MPEG-2, MPEG-4/ASP, MPEG-DVC, H.264, H.265, VC-1, WMV, RMVB	MP3, AAC, WMA, WAV, PCM, ADPCM, FLAC, APE, AAC+, AAC+, AAC+, PCM	JPEG, PNG, BMP

### 7.4 Connection

When connecting a signal source to the projector be sure to:  
1. Turn off equipment off before making any connections;  
2. Use the correct signal cables for each source;  
3. Make sure the cables are firmly inserted.  
In the connection illustrations shown below some cables may not be included with the projector (see standard accessories). They are commercially available from electronics stores.

Connecting with video equipment:

Terminal name	Terminal outward	Function	Picture quality
USB		Local Player	Better
HDMI		HDMI Devices	Best
AV/AUX		DVD Player/Spokeer	Better
VGA		Laptop Devices	Better

### 7.5 USB Media Play

Input the USB disk to the USB interface, if it connected successfully, the icon of USB disk will appear in the upper left corner, then choose the Media icon which you need open your file (You can use the picture as below as a reference).  
If it shows "This Device" connected to HDMI or USB, under normal circumstances, this is caused by poor contact of the connector, please unplug and plug it again, or test it with a new cable. If it still not work, please contact us, we will reply and give you a solution as soon as possible.



### 7.6 Connecting Devices

HDMI (High-Definition Multimedia Interface), you can use a HDMI cable connect the projector with HDMI devices. (HDMI cable included)  
HDMI Devices: Laptop, PC, TV, Blu-ray, Roku, Amazon Fire TV, Chromecast, Apple TV, PS3, PS4, PS5, X-Box, to HDMI adapter etc.



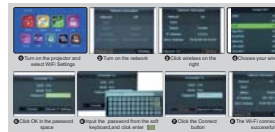
AV/AUX (Audio & Video/Auxiliary Multimedia Interface), you can use a AV cable connect the projector with AV devices. (AV cable included)  
AV Devices: VCD player, DVD player, TV Box, Speaker, etc.  
USB (Universal Serial Bus Multimedia Interface), you can insert USB disk or USB mobile hard disk to USB interface to open video, audio, picture files.  
USB Devices: USB disk, USB mobile hard disk etc.  
Note: You can't connect your phone with projector USB interface by USB cable directly, you need to buy an extra to HDMI adapter (Adapter not included).  
VGA Device: You can connect your computer or a device with a VGA port.

### 7.7 Turn on Projector Bluetooth



Note: Bluetooth function is ONLY for audio transfer with audio devices, NOT supporting video sync with smartphones and computers.

### 7.8 Set Projector to connect to WiFi



### 7.9 iOS/Mac Mirror or Android Mirror



Warm Tips: Please connect your mobile phone and projector to the Same WiFi router.

### 8. Projection Distance and Screen Size

Image Size(Inch)	Projection Screen L*W(Inch)	Picture quality(Inch)
30	6.87*3.38	0.8
40	9.17*5.5	1.1

50	1.13*0.52	1.38
60	1.32*0.79	1.62
70	1.57*0.96	1.85
80	1.78*0.98	2.09
100	2.20*1.2	2.53
200	4.42*2.4	5

## 9. Specification Parameter

Item	Description
Imaging Technology	Single LCD Projection Technology
Resolution	1024*768 pixels (30Hz)
Light	LED
LED Life Time	50,000 Hours
Focus Mode	Manual operation
Projection Distance	0.8-5M
Projection Size	30-200inch
Projector Ratio	1.8:1
Aspect Ratio	4:3/16:9
Color	White
Consumption	LED: 70W, Other: 10W
Contrast	2000:1
AC Power Supply	AC 100-250V
System support	Multi-media(Music, Picture, Video, TXT)
Projection Method	Front Table, Front Ceiling, Rear Table, Rear Ceiling

### Disclaimer:

Our company reserve the right to make changes to the contents of this instruction manual without any advance notice. Continuous upgrading of the software may bring some differences to the OSD operation menu and the picture of this instruction manual but does not affect the normal operation of the functional operation described in this instruction manual. We are sorry if this brings inconvenience to you, please kindly understand.

## Note: 5G band (W52) indoor use

### Warning:

This device complies with Part 15 of the FCC Rules. Operation is subject to the following two conditions: (1) this device may not cause harmful interference, and (2) this device must accept any interference received, including interference that may cause undesired operation.

Changes or modifications not expressly approved by the party responsible for compliance could void the user's authority to operate the equipment.

NOTE: This equipment has been tested and found to comply with the limits for a Class B digital device, pursuant to Part 15 of the FCC Rules. These limits are designed to provide reasonable protection against harmful interference in a residential installation. This equipment generates, uses and can radiate radio frequency energy and, if not installed and used in accordance with the instructions, may cause harmful interference to radio communications. However, there is no guarantee that interference will not occur in a particular installation.

If this equipment does cause harmful interference to radio or television reception which can be determined by turning the equipment off and on, the user is encouraged to try to correct the interference by one or more of the following measures:

--Reorient or relocate the receiving antenna.  
-- Increase the separation between the equipment and receiver  
--Connect the equipment into an outlet on a circuit different from that to which the receiver is connected.

--Consult the dealer or an experienced radio/TV technician for help  
NOTE: This device and its antenna(s) must not be co-located or operation in conjunction with any other antenna or transmitter.

RF Exposure Statement  
To maintain compliance with FCC's RF Exposure guidelines, this equipment should be installed and operated with minimum distance of 20cm the radiator your body. This device and its antenna(s) must not be co-located or operation in conjunction with any other antenna or transmitter.