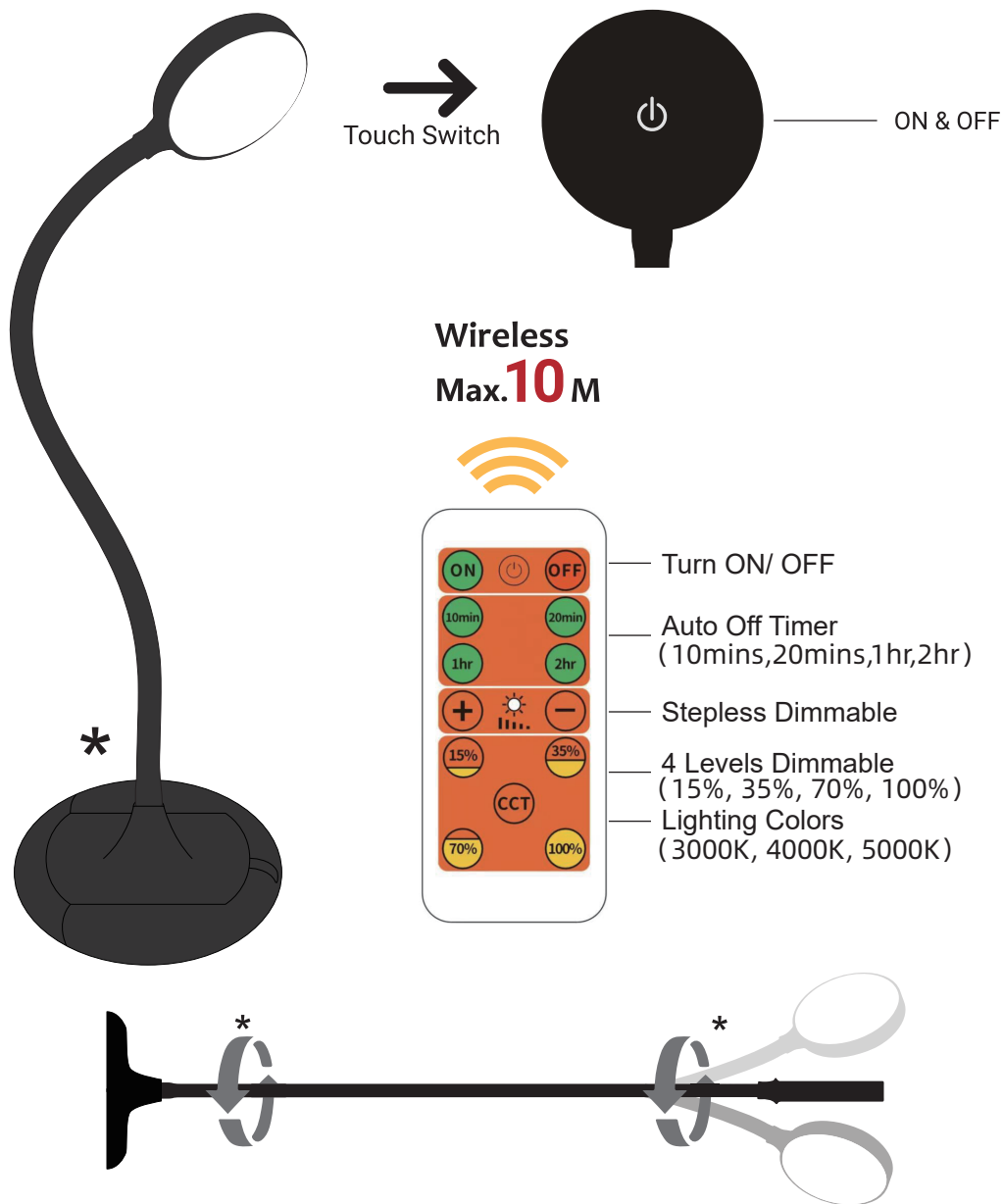


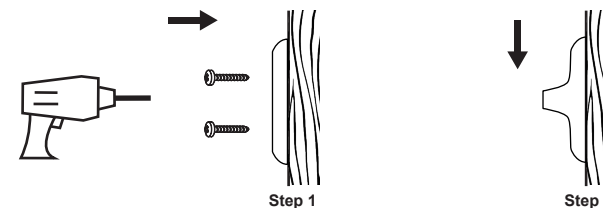
# INSTRUCTION



\* The angle of twisting is 360°, please do not overtwist beyond this range.

## Installation Methods

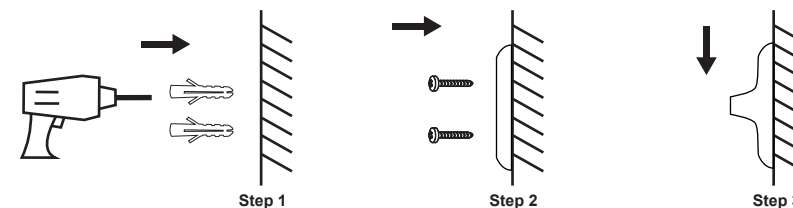
### Installation method 1 Wooden Wall



EN: Fix the support plate on the wooden surface with steel screws, and then slide the lamp base onto the support plate.

RU: Закрепите опорную пластину на деревянной поверхности стальными винтами, а затем установите основание лампы на опорную пластину.

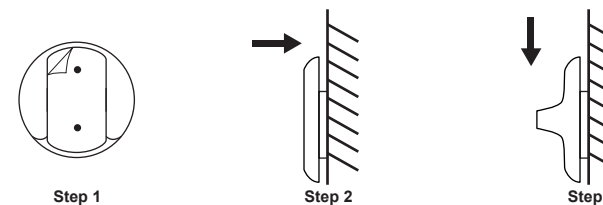
### Installation method 2 Non-wooden Wall



EN: Drill 2 holes  $\varnothing 5\text{mm}$  in the wall, insert the expansion screws into the wall, then fix the support plate on the wall with the steel screws, and then slide the lamp base onto the support plate.

RU: Просверлите в стене 2 отверстия диаметром 5 мм, вставьте в стену расширительные винты, затем закрепите опорную пластину на стене стальными винтами, а затем установите основание лампы на опорную пластину.

### Installation method 3 Any Type of Flat Wall



EN: Use tape to stick the support plate on the required surface, and then slide the lamp base onto the support plate.

RU: С помощью скотча приклейте опорную пластину к нужной поверхности, а затем установите основание лампы на опорную пластину.

EN

## LED WALL READING LIGHT

SKU	RS-DW32	Lighting Brightness	Max.370Lm
Material	Plastic ABS+ PC	CRI	CRI>80
LED	SMD2835 LED	Lighting Color	3000K-4000K-5000K
Power	Max. 4W	Waterproof Rate	IP20

ES

## APLIQUE DE LECTURA LED

SKU	RS-DW32	Brillo de la iluminación	Máx.370Lm
Material	Plástico ABS+ PC	CRI	CRI>80
LED	SMD2835 LED	Iluminación Color	3000K-4000K-5000K
Potencia	Max. 4W	Índice de impermeabilidad	IP20

DE

## LED WANDLESELICHT

SKU	RS-DW32	Helligkeit der Beleuchtung	Max.370Lm
Material	Kunststoff ABS+ PC	CRI	CRI>80
LED	SMD2835 LED	Beleuchtung Farbe	3000K-4000K-5000K
Strom	Max. 4W	Index der Wasserdichtigkeit	IP20

IT

## LUCE DI LETTURA A PARETE A LED

SKU	RS-DW32	Luminosità dell'illuminazione	Max.370Lm
Material	Plastica ABS+ PC	CRI	CRI>80
LED	SMD2835 LED	Colore dell'illuminazione	3000K-4000K-5000K
Potenza	Max. 4W	Indice di impermeabilità	IP20

FR

## LISEUSE MURALE À LED

SKU	RS-DW32	Luminosité de l'éclairage	Max.370Lm
Matériau	Plastique ABS+ PC	CRI	CRI>80
LED	SMD2835 LED	Couleur de l'éclairage	3000K-4000K-5000K
Puissance	Max. 4W	Indice de résistance à l'eau	IP20

KR

## LED 벽면 독서등

SKU	RS-DW32	조명 밝기	Max.370Lm
재료	플라스틱 ABS+ PC	CRI	CRI>80
LED	SMD2835 LED	조명 색상	3000K-4000K-5000K
전원	Max. 4W	방수 속도	IP20

RU

## НАСТЕННЫЙ СВЕТИЛЬНИК ДЛЯ ЧТЕНИЯ

SKU	RS-DW32	Яркость освещения	Max.370Lm
Материал	Пластик ABS+ PC	CRI	CRI>80
LED	SMD2835 LED	Цвет освещения	3000K-4000K-5000K
Мощность	Max. 4W	Водонепроницаемость	IP20

## Imported By:

Ningbo Shi Lin Bao Dianzi Shangwu Youxian Gongsi  
Zhejiang Sheng Ningbo Shi Haishu Qu  
Hui Tou Xiang 1 Hao 1224 Shi



KOVA ASSOCIATES LTD  
72a Kingston Road, Portsmouth,  
Hampshire, PO2 7PA, United Kingdom  
KOVA.Compliance@outlook.com

## Manufactured By:

Ningbo Jiangbei Realshine Electronics Co., Ltd  
4F, 1# Building, No.6 Hongxing Rd, Ningbo, China



XDH Tech, Dinghao Xue  
2 Rue Coysevox Bureau 3, Lyon, Rhone, 69001, France  
xdh.tech@outlook.com  
00330652768898

# Enuotek®

✉ service@enuotek.com

🌐 www.enuotek.com

Made in China



This device complies with part 15 of the FCC Rules. Operation is subject to the following two conditions: (1) This device may not cause harmful interference, and (2) this device must accept any interference received, including interference that may cause undesired operation.

FCC warning:

Any Changes or modifications not expressly approved by the party responsible for compliance could void the user's authority to operate the equipment.

Note: This equipment has been tested and found to comply with the limits for a Class B digital device, pursuant to part 15 of the FCC Rules. These limits are designed to provide reasonable protection against harmful interference in a residential installation. This equipment generates uses and can radiate radio frequency energy and, if not installed and used in accordance with the instructions, may cause harmful interference to radio communications. However, there is no guarantee that interference will not occur in a particular installation. If this equipment does cause harmful interference to radio or television reception, which can be determined by turning the equipment off and on, the user is encouraged to try to correct the interference by one or more of the following measures:

- Reorient or relocate the receiving antenna.
- Increase the separation between the equipment and receiver.
- Connect the equipment into an outlet on a circuit different from that to which the receiver is connected.
- Consult the dealer or an experienced radio/TV technician for help.

The device has been evaluated to meet general RF exposure requirement. The device can be used in portable exposure condition without restriction.