

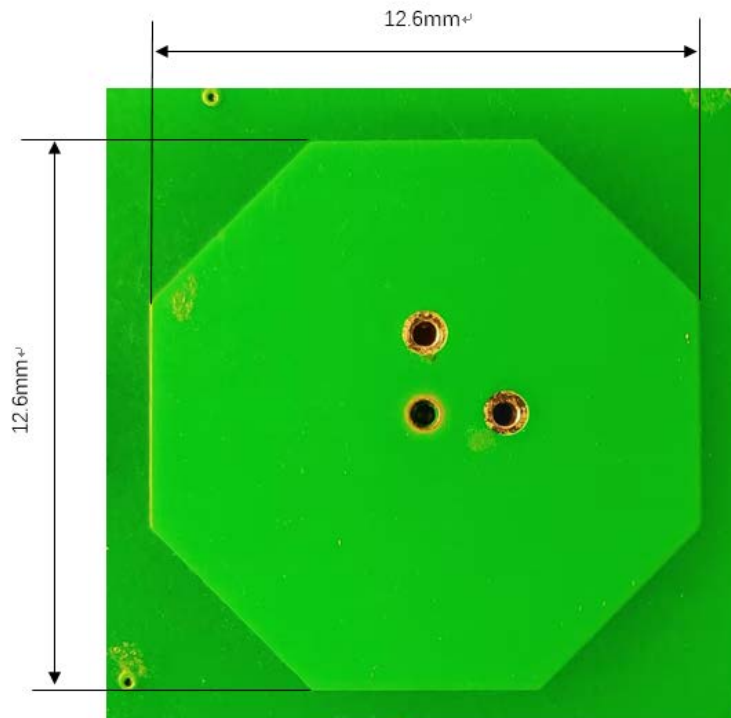
Antenna Specifications

Manufacturer: Airtouch (Shanghai) Intelligent Technology Co., Ltd

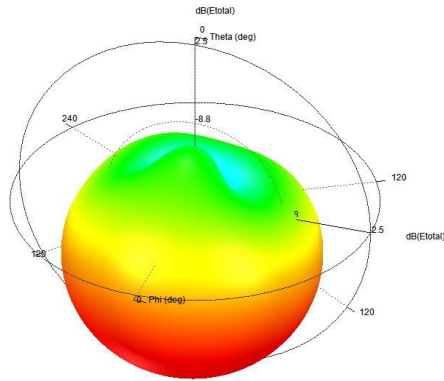
Address: Room 902, Building 2, No. 88 Shangrong Road, Pudong New Area, Shanghai, China

Design Specifications	Typical
Antenna Type*	Patch
Working Frequency	5.83-5.87 GHz
Max Antenna Gain	1.7 dBi
Antenna Efficiency	$\geq 30\%$
VSWR	≤ 2
Impedance	50 ohm
Overall Dimensions*	12.6 mm * 12.6 mm

- **Schematic**

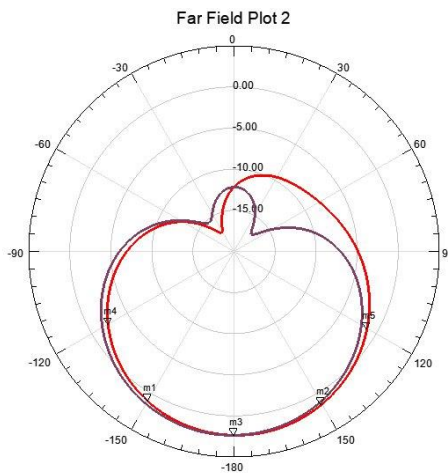


● 3D Antenna Gain



● 2D Antenna Gain

Name	Theta	Ang	Mag
m1	-150.0000	-150.0000	1.0234
m2	150.0000	150.0000	1.4672
m3	-180.0000	-180.0000	2.3585
m4	-120.0000	-120.0000	-2.2911
m5	120.0000	120.0000	-1.2805



Curve Info
dB(Etotal)
HFSS Setup 1: Last Adaptive
F=5.8GHz Phi=0deg
dB(Etotal)
HFSS Setup 1: Last Adaptive
F=5.8GHz Phi=90deg