

Read the safety precautions in this section before installing, powering, operating or servicing this product.

[SAFETY PRECAUTIONS]

⚠ WARNING!

Safety hazard. Can result in shock from battery or product damage.

- Lighting fixture is for INDOOR use ONLY.
- Do not use parts or materials other than the supplier parts to install this product
- To avoid accidents do not change or modify this product in any form or method.
- Do not replace batteries when your hands are wet to avoid risk of shock or product malfunction.
- Do not look directly at LED to minimize the risk of eye irritation or injury.
- Not for use in high temperature, humidity, direct sunlight or where it may be exposed to rain or water.

- Install the device according to the user manual and installation instructions.
- Use this product within the room temperature range of 0-40°C (32-104°F).

Cleaning and Installation Care.

- Wipe and clean product with a dry soft cloth ONLY. DO NOT spray any type of cleaning solution directly onto the product as it will damage the device. Never clean with harsh chemicals such as alcohol or solvents.
- Ensure that product is mounted securely to the wall to prevent personal injury and /or product damage as a result of product falling.
- Do not install near electric doors or other devices that use radio waves as to not interfere with this product or radio wave devices.
- Do not mix old and new batteries, alkaline and carbon-zinc or rechargeable batteries.
- Do not install this product near high temperature equipment such as heaters to avoid sensor failure.

- Be careful of battery polarity when installing batteries.
- If the product malfunctions in any way, stop using the product and contact the original seller.
- Remove batteries when not in use for long periods.

About radio wave

This product uses the 2.4 GHz frequency band. Other wireless devices may also use the same frequency, so please pay attention to the following to prevent radio waves from interfering with this device.

In the frequency band used by this product, in addition to industrial, scientific, and medical equipment (such as microwave ovens), there are also radio stations for mobile object identification that require a factory production license, specific low-power radio stations that do not require a license and amateur radio stations, etc. (Hereinafter referred to as "other radio stations").

1. Before using this product, please make sure that no "other radio stations" are operating nearby.
2. If this product causes radio wave interference to "other radio stations", please immediately change the place of use of this product or stop using the device.

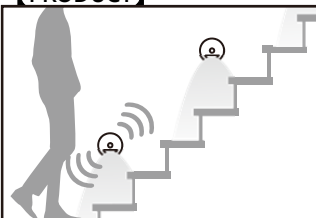
- If this product is too close to other devices that use the 2.4 GHz frequency band, it may cause problems or malfunction due to radio wave interference.
- Communication may not be possible in the vicinity of a broadcasting radio station.
- If there are shelters between the linkable devices or due to the influence of the building structure, the transmission distance may be shortened.
- Interference shelters will absorb electromagnetic wave energy, attenuate the transmission signal, or shorten the transmission distance. The degree of influence depends on the material and thickness. According to the degree of possible interference, it can be divided into the following 4 categories. When installing, avoid "very high interference" shelters as much as possible:
 - ⊙ Low interference: such as wood, glass and many synthetic materials
 - ⊙ Moderate interference: such as water, bricks, marble
 - ⊙ High interference: such as plaster, cement
 - ⊙ Very high interference: such as metal

About sensors

The sensor responds to changes in brightness and temperature. For example, if it is installed in the following places, it may not work properly or malfunction. The transmit and receive sensitivity of the linkable wall lamp will vary with the use environment, the following conditions / locations must be considered before installing:

- Places with strong radio waves
- Places with glass such as glass doors
- Places where wind blows (near windows, etc.)
- Places where pets such as dogs or cats will pass
- Near high-temperature objects such as heating
- Close to other lighting equipment
- Objects that will shake due to wind, such as curtains
- Glass between the lights may cause poor linkage function, such as doors and fish tank

[PRODUCT]



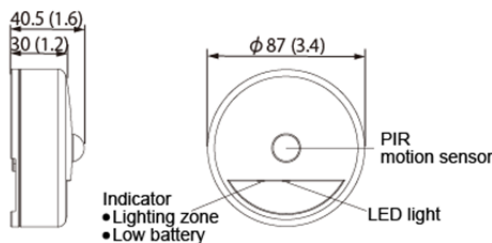
"Linkable wall lights" are LED wall lamps that use RF (Radio Frequency) transmitting and receiving technology to communicate between lights. When the surrounding environment becomes dark, the motion sensors on the lights will activate. When someone is detected by the sensor the LED will light up and communicate to the other lights in the path to light up at the same time creating a safe lighting path.

[CONTENTS]

Model No.: AP7000RF		
Light body	ABS-plastic, PCBA	1 pc
Backplate	Stainless steel SUS304	1 pc
Self-tapping wood screw	Steel	2 pcs
Double-sided tape	Adhesive	1 pc
Manual	Paper	1 pc
Power source: 3*AA alkaline dry batteries (not included)		

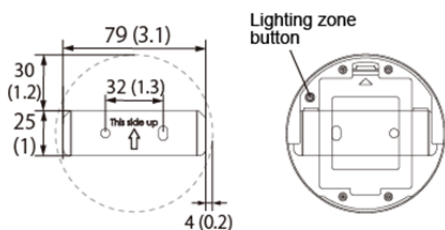
[DIMENSIONS] unit: mm (inch)

Body



- Indicator
- Lighting zone
 - Low battery

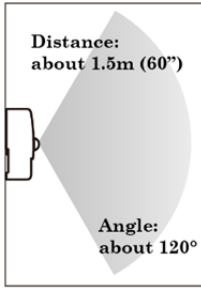
Backplate



[SPECIFICATIONS]

LED type * quantity	SMD * 1 pc
Color temperature	3000K±500 (warm white)
Luminous flux	About 25 lumens
Length of lighting	About 15 seconds
Human body sensor	PIR (Passive InfraRed) motion sensor
Ambient light sensor	Light sensor
Wireless transmission method	RF (Radio Frequency) 2.4 GHz
Wireless transmission distance	About 20m (65'), distance without shelter
PIR sensing angle	About 120°
PIR sensing distance	About 150cm (60")
Power source	3*AA batteries (not included)
Battery life	≥ 12 months (at 8~10 activations/day) or ≥ 4,000 times
Low battery indicator	When the battery capacity is low, the red warning light flashes every 3 seconds.
Weight	Body (excluding battery) About 68g (2.40 oz)
	Backplate (excluding tape) About 15g (0.53 oz)

【MOTION SENSOR SENSING RANGE】



The range of the motion sensor is affected by the sensor orientation and installation height. The sensitivity of the sensor will also vary due to factors such as the brightness and temperature changes in the surrounding environment. In addition, the speed of the person approaching the sensor will have an effect on when the light will turn on.

Factors that may affect the motion sensor function are:

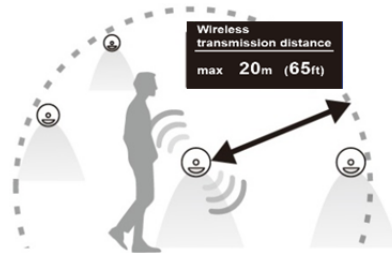
1. Approach from directly in front of the motion sensor.
2. The temperature difference between the ambient and human body is small. (For example: high temperature in summer)
3. Body temperature is not easy to detect. (For example: wearing heavy clothes)

Replace the battery if the following conditions occur:

- Red indicator keeps flashing
 - LED light is bright but dim
 - LED light does not light up
 - Light-up time becomes shorter
- ※ When replacing the batteries be certain to replace **ALL** the batteries with new batteries.
- ※ If the lights are placed in an area where they are frequently turned on and off. The battery life will be shorter than advertised.
- ※ The motion sensors respond to temperature changes in the sensing area causing the light to turn on. Therefore pets can activate the lights which can also have an effect on battery life.

【LIGHTING ZONE SETUP】

This product uses 2.4 GHz wireless communication transmission to link each device. The maximum transmission distance is about 20m (65ft). When the ambient light is dark, the device that detects the motion will send a signal to link all other devices * within 20m (65 ft), if no interference shelter and * set with the same lighting zone for activation.

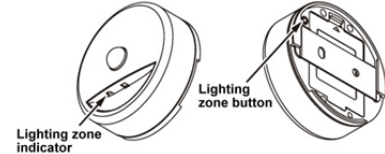


※ The wireless transmission distance may be shortened due to different use environments such as shelters or building structures.

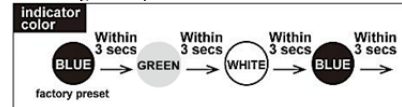
The reason for setting the lighting zone is to avoid that the lighting area has nothing to do with the direction of travel, so as to save battery power. This device can create up to 3 lighting zones. The color of the setting button can be divided into blue (factory setting), green and white. Devices set to the same color can communicate with each other. The lighting zone set by the user will be retained after the new battery is replaced- NO need to reset.

【HOW TO SET】

1. Press the "lighting zone button" on the back of the device within 3 seconds to change the color of the "lighting zone indicator".



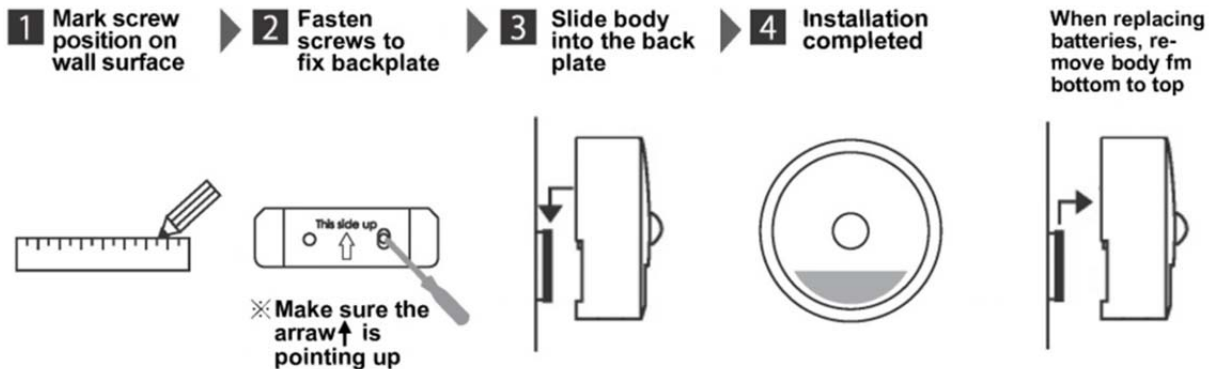
2. After setting the color, the selected color (light) will be on for 3 seconds and then flash 3 times, indicating that the setting is complete.



【INSTALLATION】

Please read the instruction carefully before use, and keep it in a safe place for reference.

- ※ Do not place any objects between wall lights to avoid interference of wireless transmission.
- ※ Since the ambient conditions of the mounting area will affect the function of the lights. Check to make sure there are no problems in the mounting area before use.



- ※ When the backplate cannot be attached to the wall by mounting screws, the supplied double sided tape can be used. Please note that the mounting surface must be clean and smooth for best results. Do not apply to rough or peeling walls.
- ※ The double sided tape has a strong adhesive on both sides. It is very easy to damage the wall when the light is removed. Please use caution during installation and removal as the responsibility for wall damage falls on the installer.

【TROUBLESHOOTING】

WHY	WHAT	HOW
There are people in the sensing area of the light but the light will not turn on.	<ol style="list-style-type: none"> 1. Are the lights installed in a bright area? 2. Are the batteries installed correctly? 3. Is the battery power low? 4. Is the room temperature very low? Or are the people wearing heavy clothing? 5. Is the person being still and not moving? 	<ol style="list-style-type: none"> 1. When the surroundings are bright, the motion sensor is in sleep mode. Wait until the surroundings become dark or move to a darker place for inspection. 2. Please confirm that the battery's positive (+) and negative (-) poles are installed in the correct direction. 3. Replace the battery. 4. The operating principle of the sensor is to respond to temperature changes caused by the movement of the human body, so it is not easy to detect temperature differences under these conditions. 5. If the person in the sensing area is not moving, they will not be detected by the sensor.
LED Light will not turn off.	<ol style="list-style-type: none"> 1. Is anyone in the sensing area? 2. Is the battery low? 	<ol style="list-style-type: none"> 1. Leave the sensing area or keep still. 2. Replace the battery.
There is no one in the sensing area of the motion sensor, but the light is on.	<ol style="list-style-type: none"> 1. Is there a heat source or moving objects in the sensing area? 	<ol style="list-style-type: none"> 1. Remove the heat source or move light also remove any moving objects in the sensing area.

※ The specifications and appearance of this device may be changed without notice due to improvements.

FCC WARNING

This device complies with part 15 of the FCC Rules. Operation is subject to the following two conditions: (1) this device may not cause harmful interference, and (2) this device must accept any interference received, including interference that may cause undesired operation.

Any changes or modifications not expressly approved by the party responsible for compliance could void the user's authority to operate the equipment.

NOTE: This equipment has been tested and found to comply with the limits for a Class B digital device, pursuant to Part 15 of the FCC Rules. These limits are designed to provide reasonable protection against harmful interference in a residential installation. This equipment generates, uses and can radiate radio frequency energy and, if not installed and used in accordance with the instructions, may cause harmful interference to radio communications. However, there is no guarantee that interference will not occur in a particular installation.

If this equipment does cause harmful interference to radio or television reception, which can be determined by turning the equipment off and on, the user is encouraged to try to correct the interference by one or more of the following measures:

- Reorient or relocate the receiving antenna.
- Increase the separation between the equipment and receiver.
- Connect the equipment into an outlet on a circuit different from that to which the receiver is connected.
- Consult the dealer or an experienced radio/TV technician for help.

FCC ID: 2AZOB-AP7000RF

Warning: Changes or modifications to this unit not expressly approved by the part esponsible for compliance could void the user's authority to operate the equipment