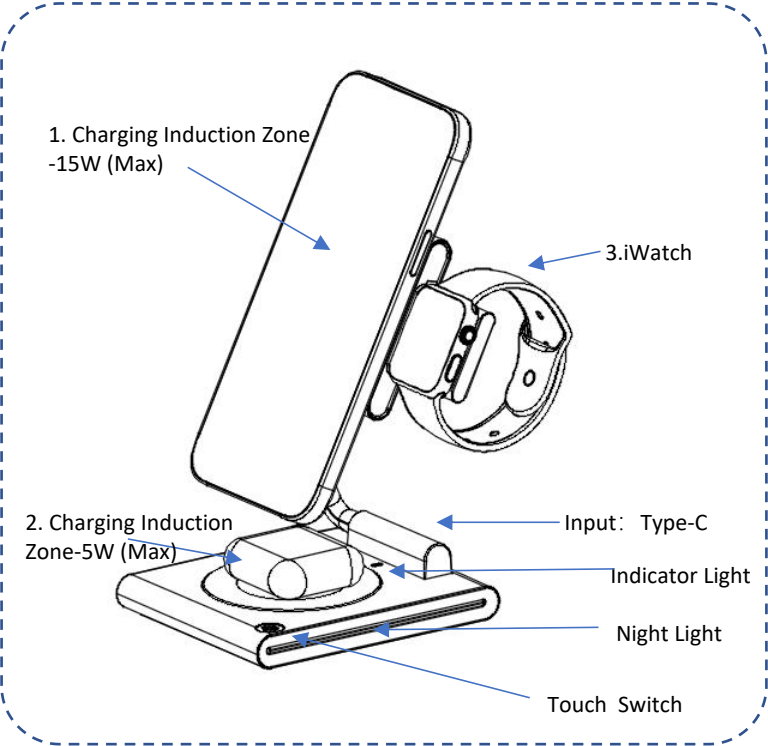


3 in 1 Wireless Charging

PRODUCT PARAMETER

MATERIAL : PC+silicone+magnet+aluminum alloy+glass
Input : Type-C
VINPUT: 5V=3A/9V=2.22A
OUTPUT-1: 15W (Max)
OUTPUT-2: 5W (Max)
OUTPUT-3: 3W (Max)

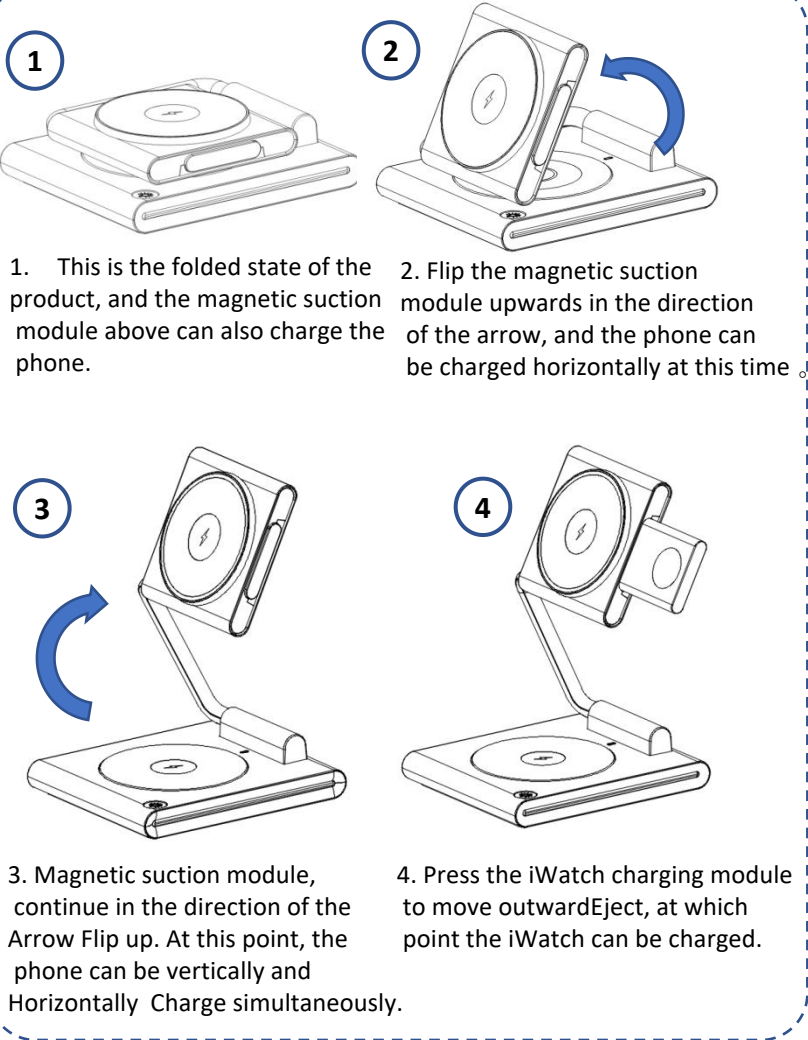
PRODUCT STRUCTURE



Definition of LED indicator lights

1. Turn on the power: The LED flashes twice at the same time and then turns off
2. Standby mode: The indicator light is red.
3. Charging status: The indicator light is blue.
4. Fully charged: The indicator light is off.
5. Foreign object status: The indicator light flashes.

*Abnormal alarm states include: overvoltage, overheating, FOD metal foreign objects, abnormal load, etc.



INSTRUCTIONS FOR USE

Recommend using PD or QC protocol adapters to meet the best user experience

1. Connect the adapter to the power supply, and the indicator light will light up. Place the phone that meets Qi wireless charging standards in the sensing area to charge, and the magnetic wireless charging will automatically locate through magnetic force.
2. The wireless charging function of the base also requires placing devices that meet Qi's wireless charging standards in the sensing area to enable wireless charging.
3. The iWatch charging module can be ejected and retracted, and can charge the iWatch when ejected.
4. LED ambient lights can provide multiple lighting modes to choose from, just touch the button.

PRECAUTIONS

- Please check whether your mobile phone is compatible with wireless charging before use.
- 1.Magnetic wireless charging is only applicable to iP12 series phones; iP8-11 and Android phones only support wireless charging.
 - 2.In order to achieve a better charging experience, it is recommended to use a 20w power adapter for charging.
 - 3.Do not put metal/magnet/credit card on the phone, otherwise it will affect the wireless charging, or even fail to charge.
 - 4.Do not splash water or other liquids on the wireless charger. If you need to clean up, please make sure that the power is disconnected first.



This device complies with part 15 of the FCC Rules. Operation is subject to the following two conditions: (1) This device may not cause harmful interference, and (2) this device must accept any interference received, including interference that may cause undesired operation.

Any changes or modifications not expressly approved by the party responsible for compliance could void the user's authority to operate the equipment.

NOTE: This equipment has been tested and found to comply with the limits for a Class B digital device, pursuant to Part 15 of the FCC Rules. These limits are designed to provide reasonable protection against harmful interference in a residential installation. This equipment generates, uses and can radiate radio frequency energy and, if not installed and used in accordance with the instructions, may cause harmful interference to radio communications. However, there is no guarantee that interference will not occur in a particular installation.

If this equipment does cause harmful interference to radio or television reception, which can be determined by turning the equipment off and on, the user is encouraged to try to correct the interference by one or more of the following measures:

- Reorient or relocate the receiving antenna.
- Increase the separation between the equipment and receiver.
- Connect the equipment into an outlet on a circuit different from that to which the receiver is connected.
- Consult the dealer or an experienced radio/TV technician for help.

FCC?Radiation?Exposure?Statement

The equipment complies with FCC radiation exposure limits set forth for an uncontrolled environment. During the operation of device a distance of 15 cm surrounding the device and 20 cm above the top surface of the device must be respected