



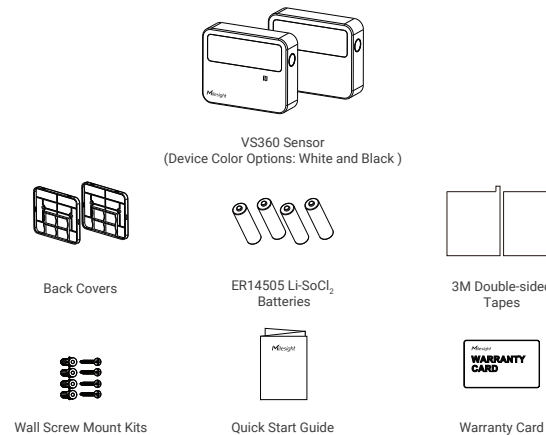
QUICK START GUIDE

IR BREAKBEAM PEOPLE COUNTER



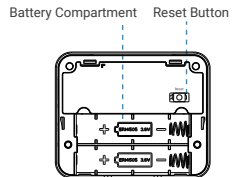
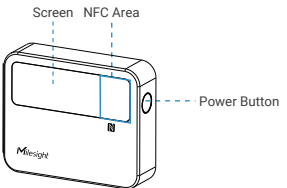
VS360

1. Packing List

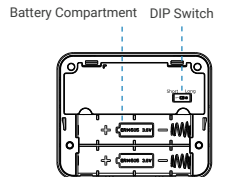
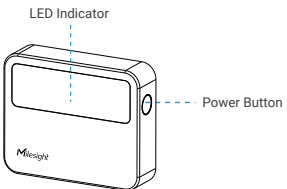


2. Hardware Introduction

Master Device



Node Device



3. Button Descriptions

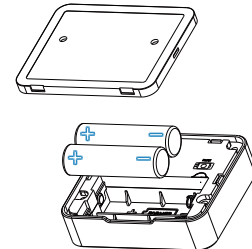
Master Device

Function	Action	Screen
Power On/Off	Press and hold on power button for 5s	Display power on /off frames
Light Up Screen	Press power button once the screen is enabled and not in hibernate period	Light on
Reset Accumulated People Value	After screen light-on, press and hold on power button for 2s	Accumulated counting value reset
Reset to Factory Default	Press and hold on reset button for 10s	Display reset frames

Node Device

Function	Action	LED Indicator
Power On/Off	Press and hold on power button for 5s	Power On: Off → On Power Off: On → Off
Check On/Off Status	Press power button once	Light On: device is on Light off: device is off

4. Power Supply



Note:

- Install batteries into master device and node device.
- Ensure the batteries direction are not reversed.
- The device can only be powered by ER14505 Li-SOCl₂ batteries. The alkaline batteries are not supported.
- The battery should be removed from the device if it is not used for an extended period.



Milesight



Quick Start Guide

All software & files can be downloaded from <https://www.milesight-iot.com/documents-download/>

Make Sensing Matter

Milesight IoT Co., Ltd. | www.milesight.com

5. Configuration Guide

1. Press power button for 5 seconds to power on both devices.
2. Download "Milesight ToolBox App" on an NFC-supported smartphone.

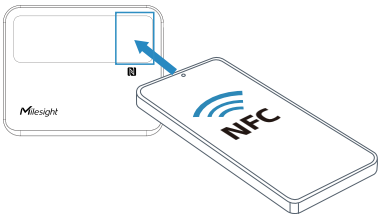


Android



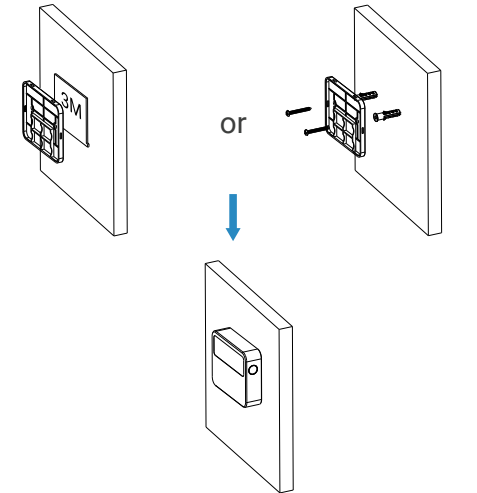
iOS

3. Launch "Milesight ToolBox App" and attach the NFC area of smartphone to the device. Click "NFC Read" to read/write the device until App shows a successful prompt. It's suggested to configure a device password for security. (Default password: 123456)



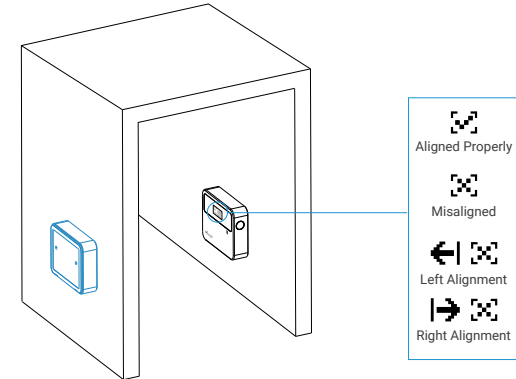
6. Installation

Node Device



Master Device

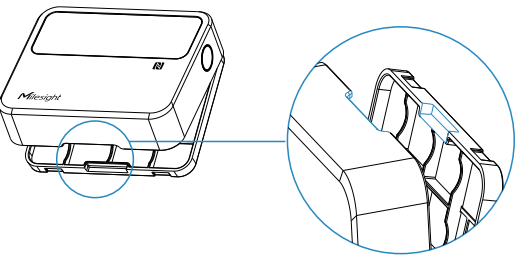
1. Align the master device to node device.
2. Ensure the screen is not blocked, press the power button once to check alignment result.
3. Adjust the device according to the prompt on the screen, and mark the installation position. Remember to press the power button to fresh the alignment result after you make each adjustment.
4. Fix the master device by 3M tape or wall screw mount kits as the installation steps of node device aforementioned.



Installation Note:

- Ensure no object between master device and node device, both devices are aligned parallelly.
- Avoid exposing device to direct sunlight.
- The best installation height is 0.7~1.2m from the ground.
- The recommended detection range is 1.2~3m. When the range is no more than 2m, it is suggested to adjust DIP switch of node device to Short position to extend battery life.
- Avoid expose the master device to the place where IR device is around (IR remote controller, etc.).

Uninstallation



Declaration : Changes or modifications not expressly approved by the party responsible for compliance could void the user's authority to operate the equipment

7. FCC Statement

Any changes or modifications not expressly approved by the party responsible for compliance could void the user's authority to operate the equipment. This device complies with part 15 of the FCC Rules. Operation is subject to the following two conditions:

- (1) This device may not cause harmful interference, and,
- (2) This device must accept any interference received, including interference that may cause undesired operation.

Note: This equipment has been tested and found to comply with the limits for a Class B digital device, pursuant to part 15 of the FCC Rules. These limits are designed to provide reasonable protection against harmful interference in a residential installation. This equipment generates, uses and can radiate radio frequency energy and, if not installed and used in accordance with the instructions, may cause harmful interference to radio communications. However, there is no guarantee that interference will not occur in a particular installation. If this equipment does cause harmful interference to radio or television reception, which can be determined by turning the equipment off and on, the user is encouraged to try to correct the interference by one or more of the following measures:

- Reorient or relocate the receiving antenna.
- Increase the separation between the equipment and receiver.
- Connect the equipment into an outlet on a circuit different from that to which the receiver is connected.
- Consult the dealer or an experienced radio/TV technician for help.

FCC Radiation Exposure Statement:

This equipment complies with FCC radiation exposure limits set forth for an uncontrolled environment. This equipment should be installed and operated with minimum distance 20cm between the radiator& your body. This transmitter must not be co-located or operating in conjunction with any other antenna or transmitter.

客 户	
机 型	VS360
材 质	80g双胶纸
尺 寸	84*84mm
工 艺	折页版
编 码	44.005.000429
版 本	V1.0