

U型蓝牙挂锁 使用说明书

型号:PL-U2



感谢您购买本产品，为了您使用方便，请仔细阅读本说明书后正确使用，并妥善保管。

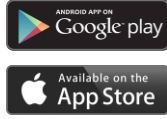
产品图解



APP下载

● 软件下载

- 用户扫描下方二维码根据手机系统下载APP并进行安装。
- 设备支持: 安卓4.0 或 IOS8.0 以上操作系统; 蓝牙4.0及以上。



初始密码和恢复出厂设置

● 初始按键密码

- 按下设备上的唤醒键。
- 按顺序输入按键初始密码解锁。



● 恢复出厂设置

- 开启U型蓝牙挂锁,拉出锁梁,使得锁在开锁状态下。
- 长按唤醒键直到指示灯熄灭,恢复成功,密码变更为初始密码。
- 如果APP已经绑定此设备，在恢复出厂设置后APP需要重新绑定设备才能使用。

● 注意事项

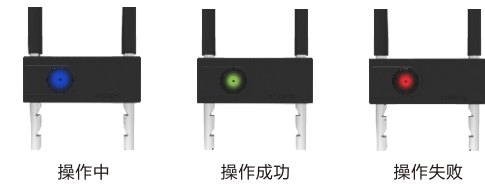
- 在输入正确密码解锁后，如果没有拔出锁梁，设备会在5秒钟后自动上锁。
- 键盘密码如果5次输入错误后，设备会有3分钟的锁定时间，在3分钟之内不能再次输入密码。
- 用户在使用设备时，请在第一时间更改初始密码，设置新密码。

键盘解锁与指示灯

● 键盘解锁

- 按下设备上的唤醒键。
- 按顺序输入初始密码或已修改的键盘密码即可解锁。
(输入完成后指示灯显示绿色为解锁成功,指示灯显示红色密码错误解锁失败)

● 指示灯状态



APP主界面

● APP界面



● 主界面介绍

- 首次打开APP后首先进入“登入”界面设置手势密码。
- 设置完手势密码，进入操作页面共有三个界面：分别是“我的蓝牙锁”、“记录查询”、“用户中心”。
- “用户中心”界面可以关闭手势密码，其中“安全问题”是“登入界面”忘记手势密码时提供使用的一种提示方式。

APP绑定设备

● 初次绑定蓝牙挂锁

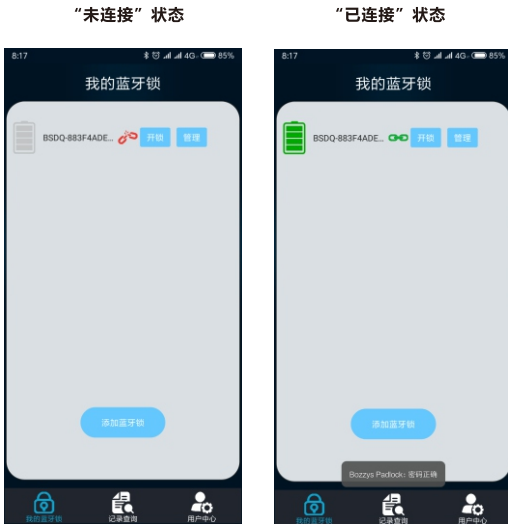
- 打开APP,进入“我的蓝牙锁”界面。
- 按下蓝牙挂锁上的唤醒键。
- 点击“添加蓝牙锁”栏，点击“刷新”搜索到设备后点击“添加”完成蓝牙设备添加。



设备管理与解锁方式

● APP连接设备解锁

- 添加完成后，设备显示在“我的蓝牙锁”界面中。
- 按下U型蓝牙挂锁上的唤醒键。
- 点击“”，连接上U型蓝牙挂锁后“”，再点击“开锁”完成解锁。
如果是ios系统需要在“开锁”时输入初始密码。



● APP连接设备的初始密码

APP开锁初始密码：“123412”

注意：绑定后点击“管理”修改初始密码
(初始密码务必修改,防止陌生人绑定挂锁)。

● 点击“管理”进入“设备管理”设置界面

界面中可以设置设备的名称、密码、开锁方式、分享和删除。



● APP自动解锁

- 按下设备上的唤醒键。
- 点击“”，连接上U型蓝牙挂锁“”。
- 点击“管理”，点击“自动开锁设置”开启,完成自动开锁设置。
- 再次开锁时在蓝牙范围内,按下蓝牙挂锁唤醒键即可解锁。
(必须在手机蓝牙开启和APP后台运行的条件下)



密码修改

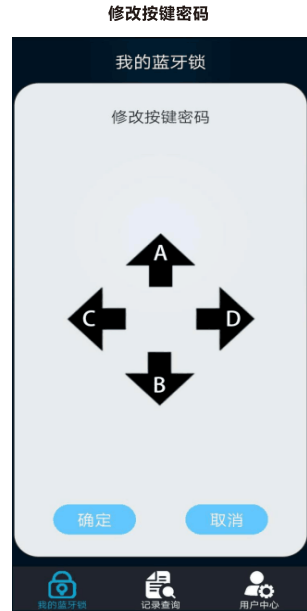
● 修改密码

- 手机APP连接设备。
- 点击“管理”进入设备管理点击“修改密码”进行修改
(该密码为蓝牙挂锁绑定密码)。



● 修改按键密码

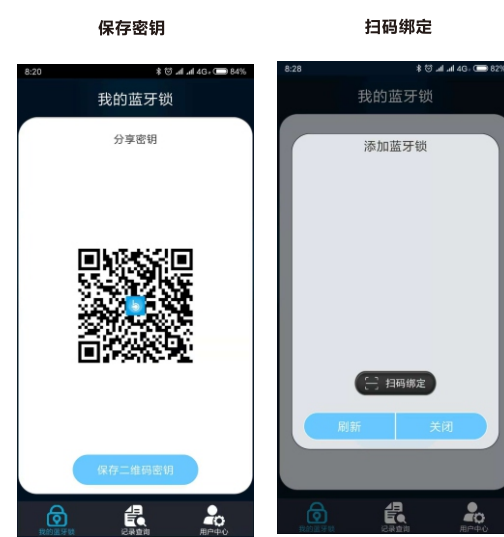
- 手机APP连接设备。
- 点击“管理”进入设备管理点“修改按键密码”进行修改。
(只能用首次绑定的手机方可修改)



APP密钥保存

● 保存密钥

- 手机APP连接设备。
- 点击“管理”进入设备管理点击“分享密钥”进入后显示二维码；
用手机通过APP添加“扫码绑定”将设备的密钥分享给对方。
(该密码为蓝牙开锁密码)。



包装清单

- U型蓝牙挂锁
- 说明书
- 充电线
- 钥匙一把

产品保修

- 产品保修卡是保修服务的凭证；
- 属于下列情况之一者,不在保修范围内:
 - 保修期外；
 - 用户自行对产品的工艺结构、电路进行修改，使用本厂以外产品配件的；
 - 产品与保修卡不符；
 - 易损、易耗品；
 - 因使用不当等人为因素或由于自然灾害等受到损坏的；
- 保修期限为1年，自出厂日起，保修期内进行免费维修，并提供售后服务

保修卡

产品名称：_____U型蓝牙挂锁_____

产品型号：_____PL-U2_____

出厂日期：_____

检 验 员：_____

注：保证此产品符合说明书所要求的规格及标准，产品合格。

产品参数

项目	参数
品 牌	BOZZYS
产品名称	U型蓝牙挂锁
产品型号	PL-U2
产品尺寸	锁体112*44*24mm
钢梁尺寸	直径φ10.5mm 高度416mm
壳体材质	锌合金
电 池	锂电池 400mah
待机时间	6个月
续航次数	1000次
无线距离	2米
软件支持	Android 4.0或IOS 8.0以上操作系统

产品特点

- 按键密码解锁
- 蓝牙连接APP解锁
- 机械锁双重保障
- APP设置
- 防水防尘：IP55（防雨淋）
- 使用温度：5℃~40℃

U-Lock Using instructions

Model:PL-U2



Thank you for purchasing this product. For your convenience, please read this instruction carefully and keep it properly.

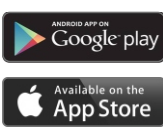
PRODUCT DETAILS



APP DOWNLOAD

● Software Download

- 1.The user scans the QR code below and downloads APP according to the system and installs it.
- 2.The lowest version requires: Android 4.0, IOS8.0, Bluetooth 4.0.



INITIAL PASSWORD AND RESET

● Initial keyboard password setting

- 1.Press the wake button on your device.
- 2.Enter the initial password to unlock it in sequence.



● Restore factory settings

- 1.Open the U lock and keeping it in the unlock situation.
- 2.Press and hold the arouse button until the indicator light goes out, the recovery is successful, and the password is changed to the initial password.
- 3.If the APP is already bound to this device, the APP needs to re-bind the device to use it after restoring the factory settings.

● Precautions

- 1.After unlocking the correct password, if the lock shackle is not removed, the device will automatically lock after 5 seconds.
- 2.If the keyboard password are entered incorrectly 5 times, the device will have a lock time of 3 minutes, and the password cannot be entered again within 3 minutes.
- 3.When the user is using the device, please change the initial password and set the new password at the first time,

KEYBOARD UNLOCK AND INDICATOR

● Keyboard unlock

- 1.Press the arouse button on your device.
- 2.Enter the initial password or the modified keyboard password in order to unlock it.
(After completing the input, the indicator light shows green that means unlock successfully, the indicator light shows red that means password is wrong)

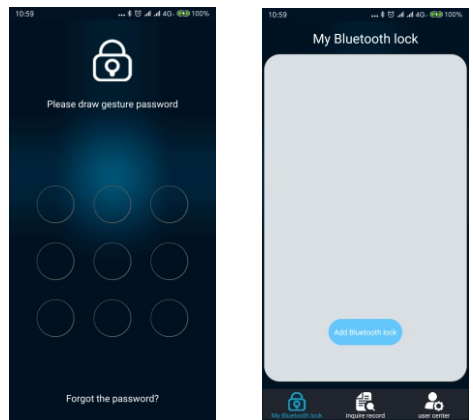
● Indicator light status



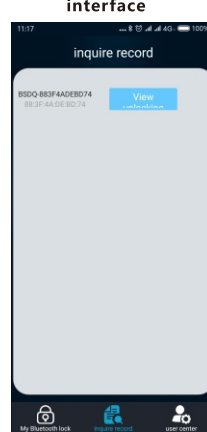
APP MAIN INTERFACE

● APP interface

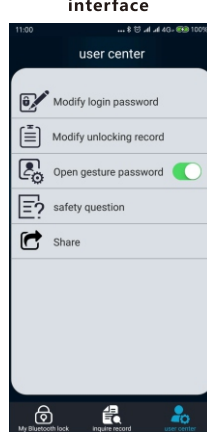
"Sign in" interface "My Bluetooth Lock" interface



"Record query" interface



"User Center" interface



● Main interface introduction

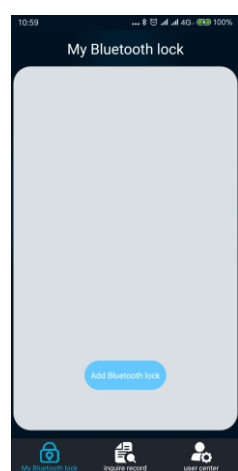
- 1.After opening the app for the first time, first enter the "Login" interface to set the gesture password. .
- 2.After setting the gesture password, there are three interfaces on the operation page. They are "My Bluetooth Lock", "Record Query", "User Center".
- 3.The "User center" interface can turn off gesture password. When using the "Login" interface but forgetting gesture password, "Security questions" is a way to prompt.

APP BINDING DEVICE

● Initially bind the Bluetooth padlock

- 1.Open the app and go to the "My Bluetooth Lock" interface.
- 2.Press the arouse button on the bluetooth padlock.
- 3.Click the "Add Bluetooth lock", click "Refresh" to search for the device and click "Add" to complete the Bluetooth lock device addition.

"Press the renovate button"



"Add the Bluetooth Lock"

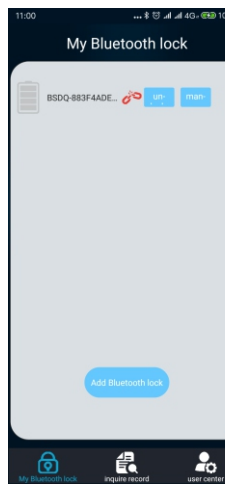


DEVICE MANAGEMENT AND UNLOCKING METHOD

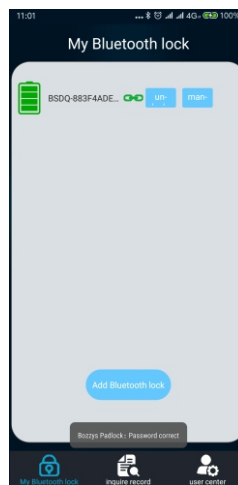
● App connected device to unlock

- 1.When the addition is completed, the device appears in the "My Bluetooth Lock" interface.
- 2.Press the wake button on the Bluetooth U-type padlock.
- 3.Click to connect the bluetooth padlock, when it changes to , it means the connection is successfully. Then click "Unlock" to complete unlocking.
If the system is IOS, it needs to enter initial password when unlocking.

"Not connected" status



"Connected" status



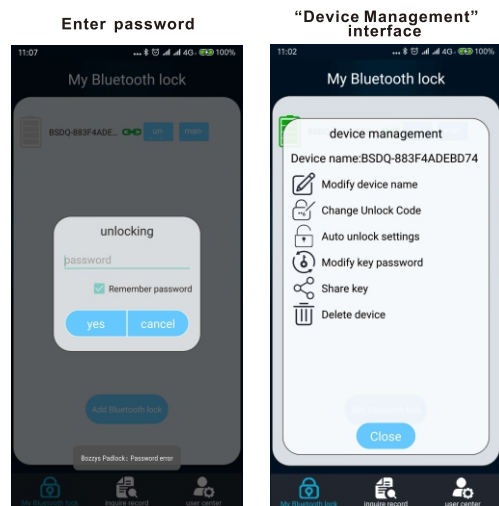
● The initial password of the APP connected device

Digital initial password : **"123412"**

Note: After binding, click "Manage" to modify the initial password. (The initial password must be modified to prevent strangers from binding padlocks)

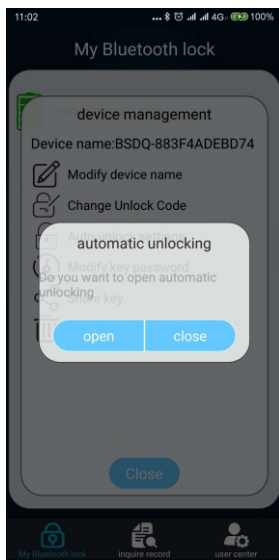
● Click "Manage" to enter the "Device Management" settings interface

- 1.The device name, password, unlock mode, share and delete can be set in the interface.



● APP automatically unlock

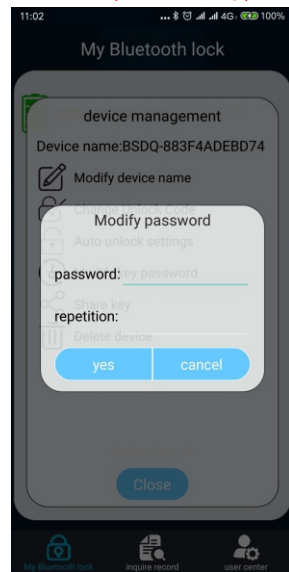
- 1.Press the arouse button on the device.
- 2.Click and connect the Bluetooth U-type padlock ().
- 3.Click "Management", then click "Automatic unlock settings" to open, complete automatic unlock settings.
- 4.To unlock again, you need to be in the Bluetooth range. Press the Bluetooth arouse button to unlock.
(On the status that mobile bluetooth is opening and APP is running)



PASSWORD MODIFICATION

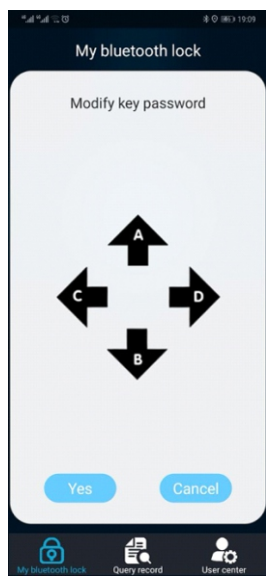
● Change Password

- 1.Mobile APP connects to the device.
- 2.Click "manage" enter into the device management interface and "Change password".
(This password is the padlock binding password)



● Modify the keyboard password.

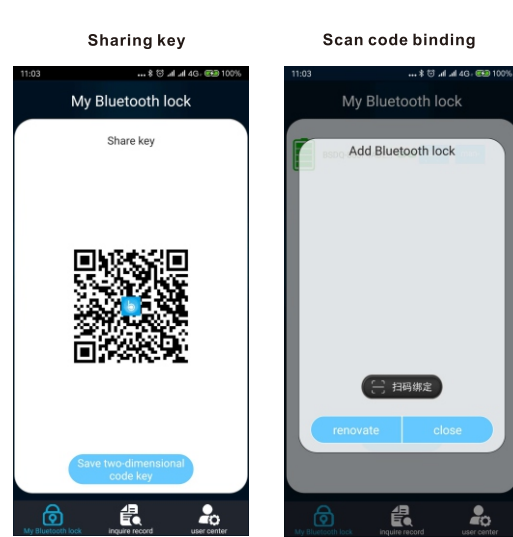
- 1.Mobile APP connects to the device.
- 2.Click "Manage" to enter the device management point "Modify button password" to modify. (Can only be modified with the bound phone)
- 3.ABCD corresponding button to set the mechanical keyboard password



APP KEY SHARING

● Sharing key

- 1.Mobile APP connects to the device.
- 2.Click "Manage" to enter the device management. Click "Share Key" to enter the QR code. Use the phone to add "Scan Code Binding" to share the device key to the other party. (The password is a Bluetooth unlock key).



PACKING LIST

- | | |
|--------------------|-----------------|
| [1] door lock | [2] Instruction |
| [3] Charging cable | [4] one key |

PRODUCT WARRANTY

- [1] Product warranty card is the certificate of warranty service;
- [2] The following conditions are not covered by the warranty;
 - a. Outside the warranty period;
 - b. The user shall modify the process structure and circuit of the product by himself, and use the accessories not from our factory;
 - c. The product does not match the warranty card;
 - d. Vulnerable, consumables;
 - e. Damage caused by improper use or other human factors or due to natural disasters;
- [3] The warranty period is 1 year, from the date of shipment, free maintenance during the warranty period, and after-sales service.

WARRANTY CARD

Product Name: _____ U- Lock
Product model: _____ PL-U2
Date of manufacture: _____
Inspector: _____

Note: This product is guaranteed to meet the specifications and standards required by the manual.

SPECIFICATION PARAMETER

Item	Parameters
Brand	BOZZYS
Product Name	U-Lock
Model	PL-U2
Product size	Lock body 112*44*24mm
Shackle size	Diameter φ10.5mm height 416mm
Lock shell material	Zinc alloy
Battery	Lithium battery 400mah
Standby time	6 months
Endurance times	1000 times
Wireless distance	2 meters
Support system	Android 4.0 or IOS 8.0 or higher operating system

PRODUCT FEATURES

- [1] Key password to unlock
- [2] Use Bluetooth connecting APP to unlock
- [3] Mechanical lock double guarantee
- [4] APP settings
- [5] Waterproof and dustproof: IP55 (rainproof)
- [6] Operating temperature: 5℃~40℃

使用距离小于20cm的产品：使用距离（使用产品时，与人的距离）

This device complies with part 15 of the FCC Rules. Operation is subject to the following two conditions: (1) this device may not cause harmful interference, and (2) this device must accept any interference received, including interference that may cause undesired operation.

Any changes or modifications not expressly approved by the party responsible for compliance could void the user's authority to operate the equipment.

NOTE: This equipment has been tested and found to comply with the limits for a Class B digital device, pursuant to Part 15 of the FCC Rules. These limits are designed to provide reasonable protection against harmful interference in a residential installation. This equipment generates, uses and can radiate radio frequency energy and, if not installed and used in accordance with the instructions, may cause harmful interference to radio communications. However, there is no guarantee that interference will not occur in a particular installation.

If this equipment does cause harmful interference to radio or television reception, which can be determined by turning the equipment off and on, the user is encouraged to try to correct the interference by one or more of the following measures:

- Reorient or relocate the receiving antenna.
- Increase the separation between the equipment and receiver.
- Connect the equipment into an outlet on a circuit different from that to which the receiver is connected.
- Consult the dealer or an experienced radio/TV technician for help.

The device has been evaluated to meet general RF exposure requirement. The device can be used in portable exposure condition without restriction