



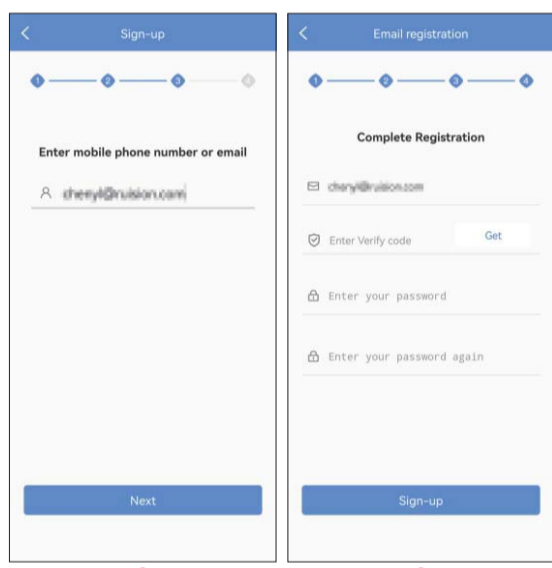
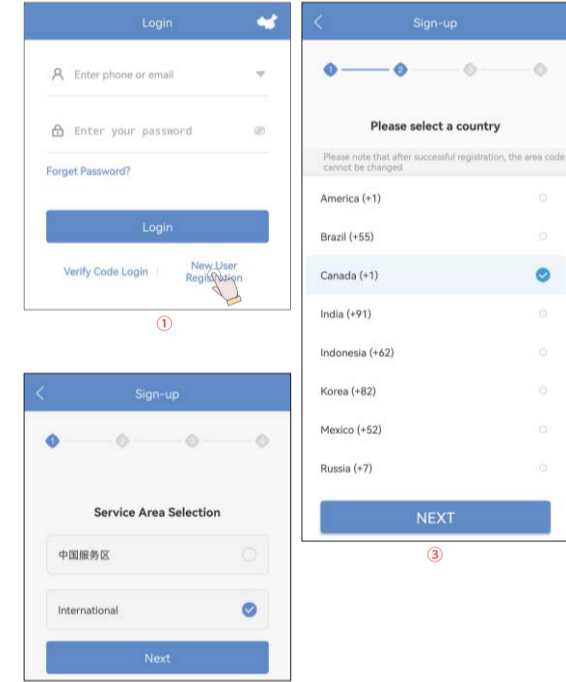
一、Download APP
Please scan the QR code below with your mobile phone to download the latest version of P6SLite APP directly.



You can also search for the keyword P6SLite in App Store, Android Market, Google Play, and Apple Store to download.

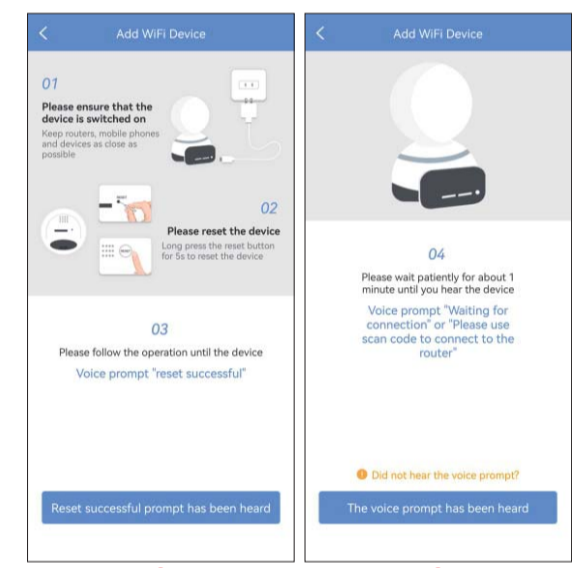
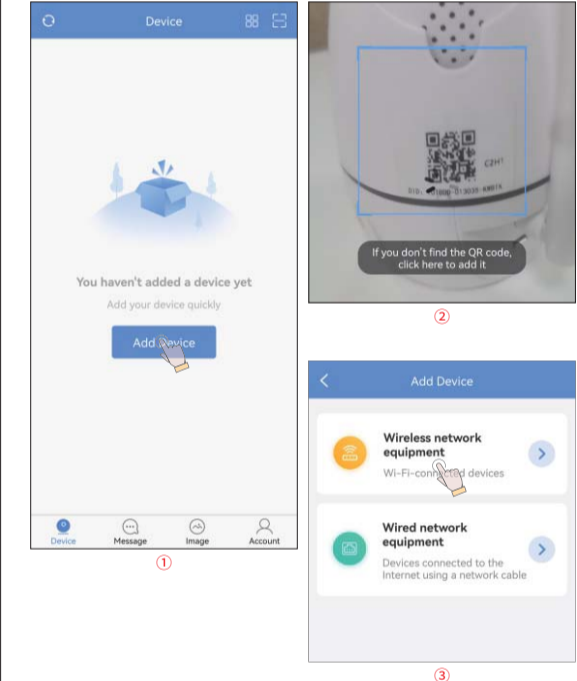


二、Create account

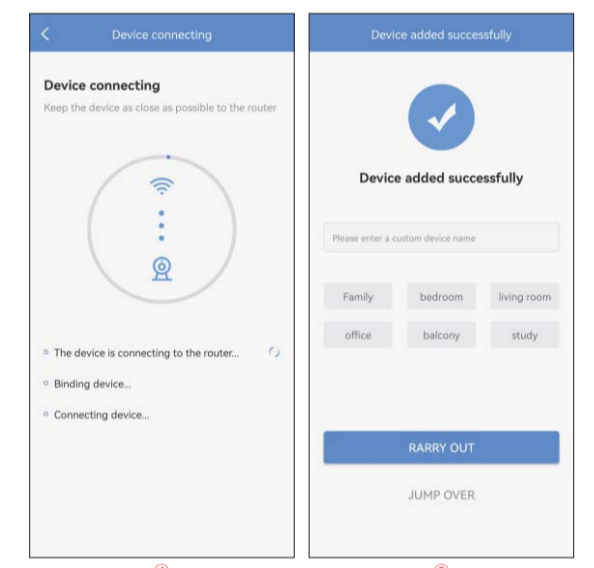
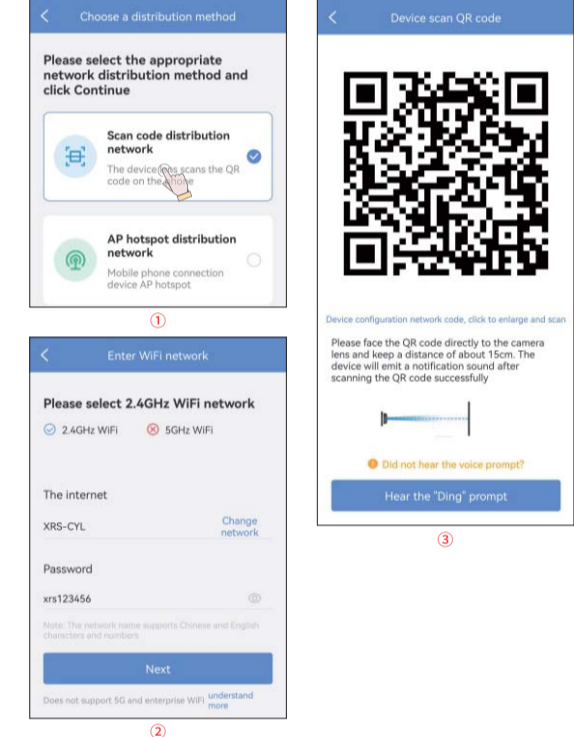


三、Add equipment

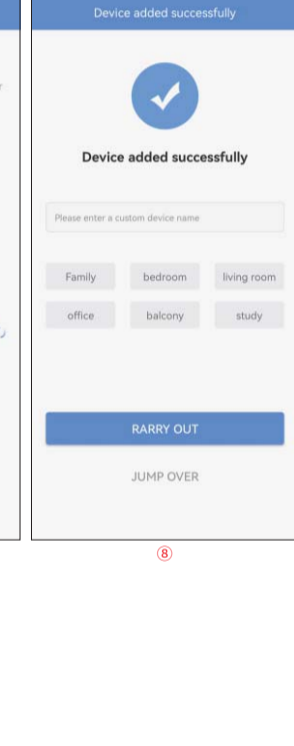
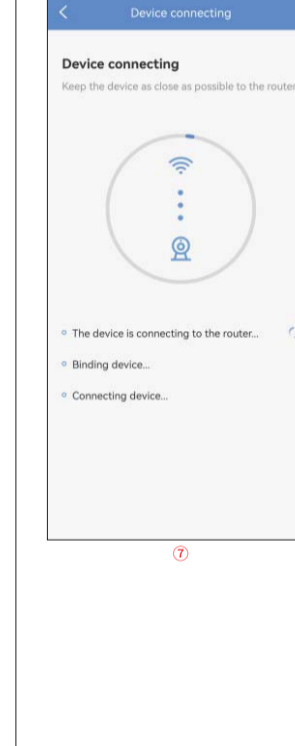
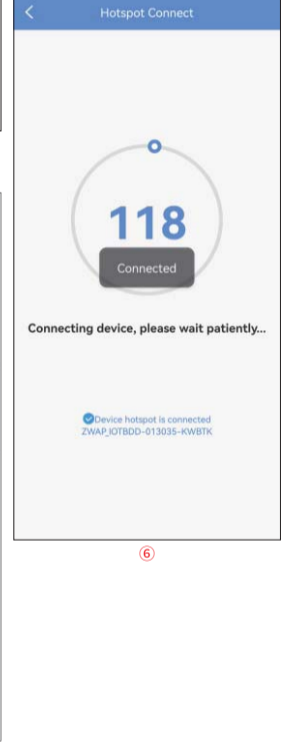
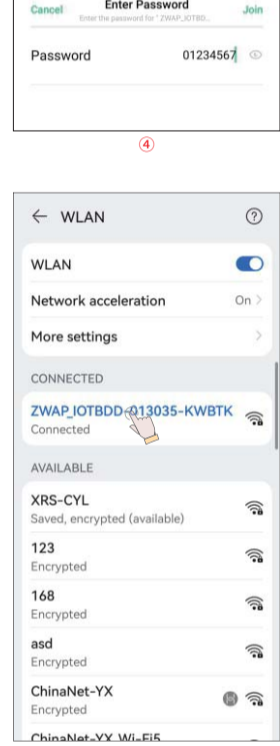
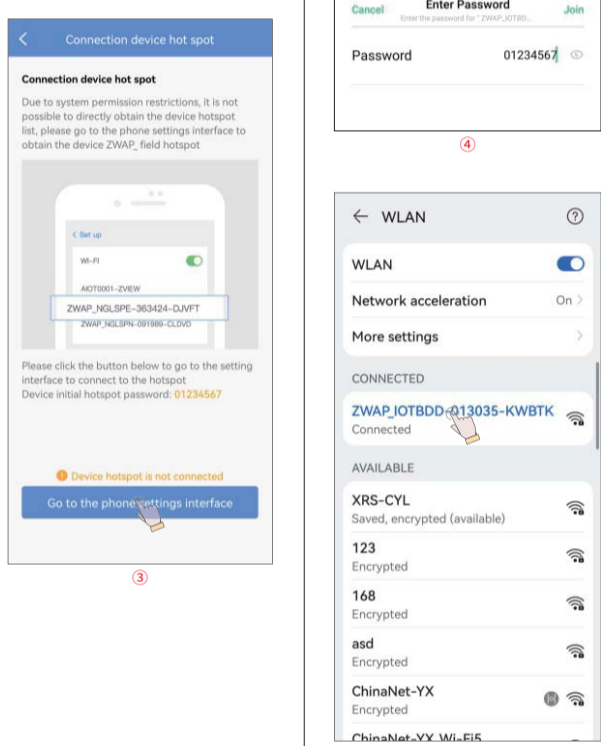
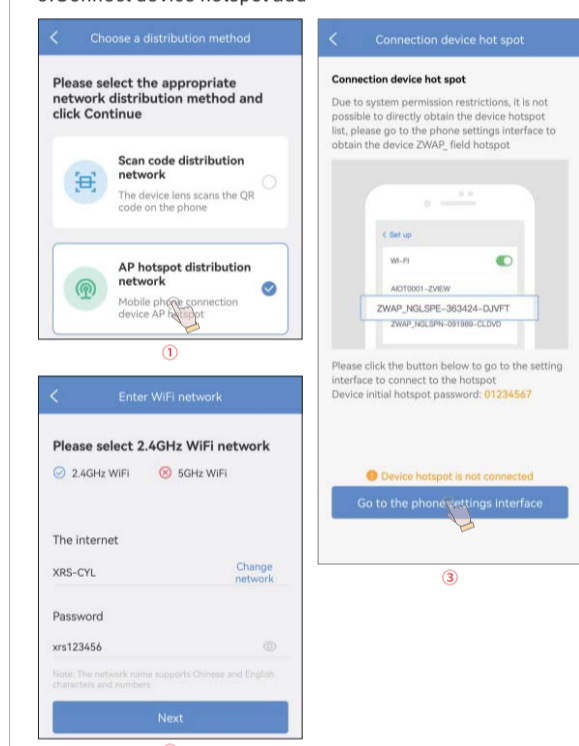
1. Click Add Device, select "Add WIFI Device" to reset the device



2. Device scan APP QR code to add

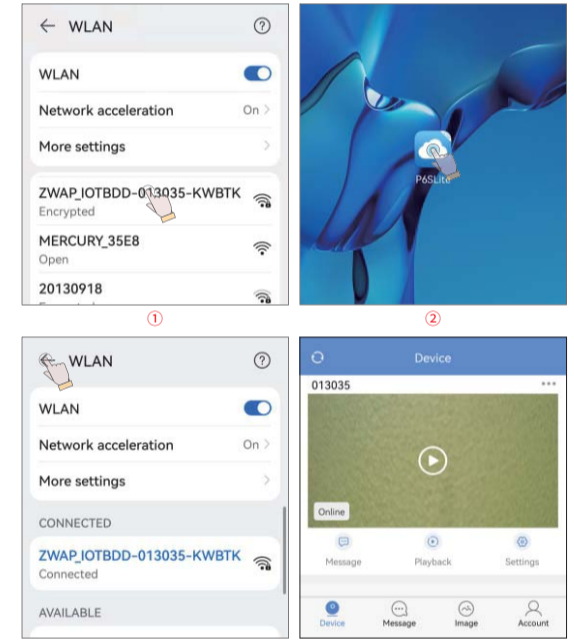


3. Connect device hotspot add

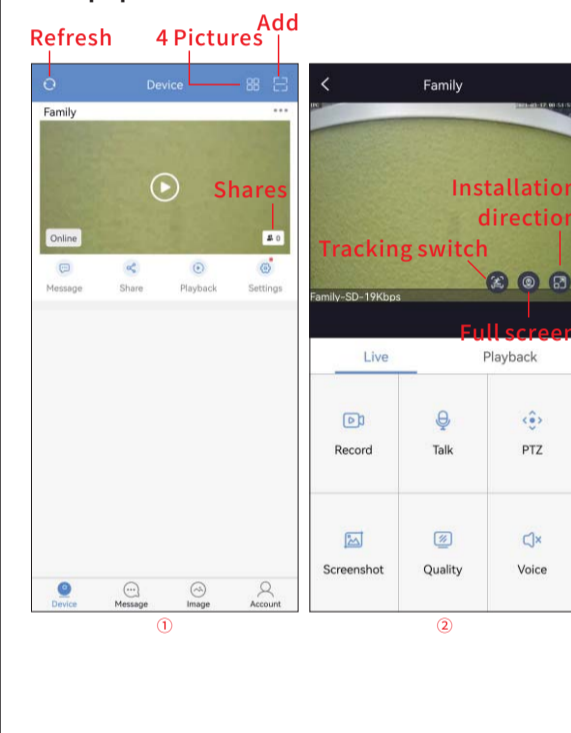


四. Hot watch

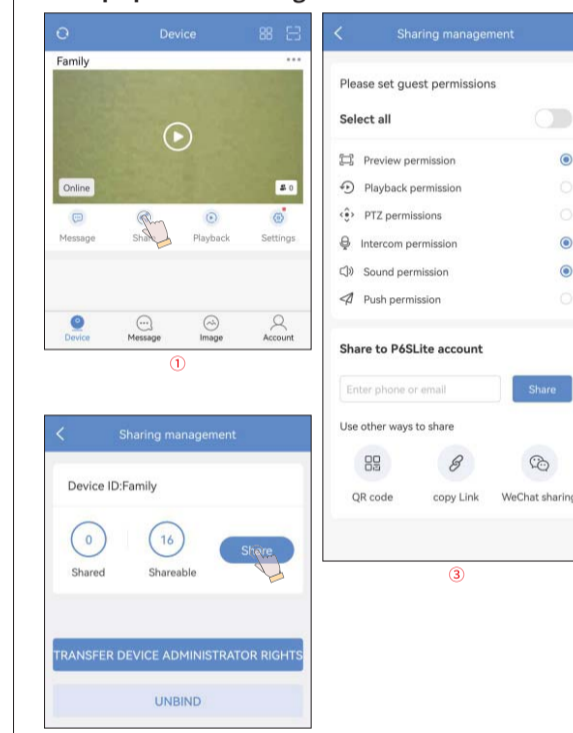
Select the device hotspot ZWAP_JOTXXX_XXXXX_XXXX, enter the password "01234567" to connect the phone to the device hotspot, and open the APP to watch directly.



五. Equipment function



六. Equipment sharing



七. common problem

- Question: When adding a device, it shows that the password is wrong or forgotten password which set after the last connection?**
Answer: The device may have a password or have been changed or reset. "Reset button" (using Ushaped reset pin) long press for 5 seconds, the device voice prompt appears "Reset is successful", it means that the device password has been reset successfully. Follow the steps above to add it again, that's it.
- Question: Is the device offline in the device list?**
Answer: Please check whether the device is connected to the Internet normally, please check whether the power supply of the device is normal, power off the device and restart it, and try to see if it returns to normal.
- Question: What should I do if the mobile APP cannot receive the push?**
Answer: Please check whether push is turned on (it shows that it has been subscribed is turned on) and whether there is alarm push linkage (Settings-Alarm Settings)
- Question: The playback video does not search for the video file?**
Answer: Please check whether the SD card is damaged, whether there is an SD card installed, check the device time, and check whether the playback video time is correct.
- Question: The device cannot connect to WIFI?**
Answer: Is it because the distance between the device and the device is too far, the hotspot connected to the mobile phone and the current device is incorrect, the router does not turn on the DHCP function, and the connected WIFI is 5G (device Does not support 5G, only supports 2.4G), the router has turned on the anti-rubbing function to filter the equipment.

FCC WARNING

This device complies with part 15 of the FCC Rules. Operation is subject to the following two conditions: (1) this device may not cause harmful interference, and (2) this device must accept any interference received, including interference that may cause undesired operation. Any changes or modifications not expressly approved by the party responsible for compliance could void the user's authority to operate the equipment.

NOTE: This equipment has been tested and found to comply with the limits for a Class B digital device, pursuant to Part 15 of the FCC Rules. These limits are designed to provide reasonable protection against harmful interference in a residential installation. This equipment generates, uses and can radiate radio frequency energy and, if not installed and used in accordance with the instructions, may cause harmful interference to radio communications.

However, there is no guarantee that interference will not occur in a particular installation. If this equipment does cause harmful interference to radio or television reception, which can be determined by turning the equipment off and on, the user is encouraged to try to correct the interference by one or more of the following measures:

- Reorient or relocate the receiving antenna.
- Increase the separation between the equipment and receiver.
- Connect the equipment into an outlet on a circuit different from that to which the receiver is connected.
- Consult the dealer or an experienced radio/TV technician for help.

To maintain compliance with FCC's RF Exposure guidelines, this equipment should be installed and operated with minimum 20cm distance between the radiator and your body. Use only the supplied antenna.