

160 毫米

110.0 毫米

FCC Compliance Notification

Warning:

This device complies with Part 15 of the FCC Rules. Operation is subject to the following two conditions:

- 1. This device may not cause harmful interference.
- 2. This device must accept any interference received, including interference that may cause undesired operation. Changes or modifications not expressly approved by the party responsible for compliance could void the user's authority to operate the equipment.

This equipment has been tested and found to comply with the limits for a Class B digital device, pursuant to Part 15 of the FCC Rules. These limits are designed to provide reasonable protection against harmful interference in a residential installation. This equipment generates, uses, and can radiate radio frequency energy and, if not installed and used in accordance with the instructions, may cause harmful interference to radio communications. However, there is no guarantee that interference will not occur in a particular installation. If this equipment does cause harmful interference to radio or television reception, which can be determined by turning the equipment off and on, the user is encouraged to try to correct the interference by one or more of the following measures:

- Reorient or relocate the receiving antenna.
- Increase the separation between the equipment and receiver.
- Connect the equipment into an outlet on a circuit different from that to which the receiver is connected.
- Consult the dealer or an experienced radio/TV technician for help.

This equipment must be installed and operated in accordance with provided instructions and the antenna(s) used for this transmitter, and must not be co-located or operating in conjunction with any other antenna(s) or transmitter. End-users and installers must be provided with antenna(s) installation instructions and transmitter operating conditions for satisfying RF exposure compliance.

Byybuo

BYYBUO_SmartFrame_D10

110.0 毫米

160.0 毫米

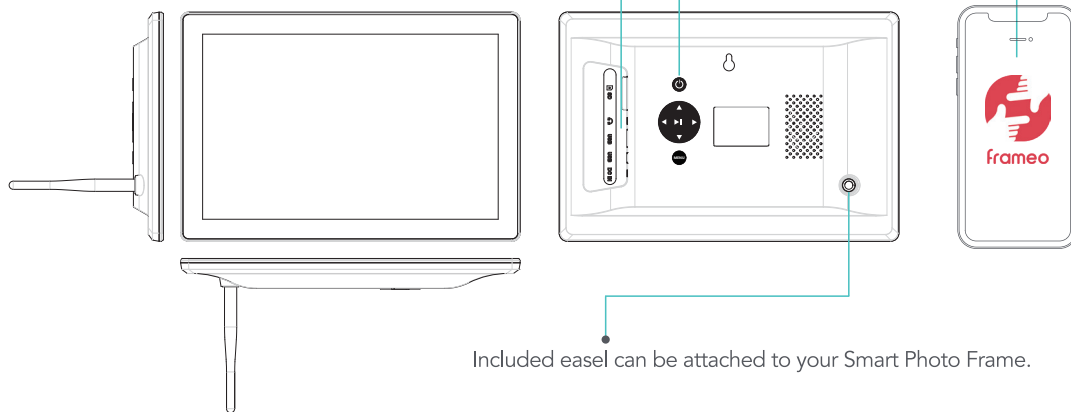
Smart Photo Frame

Package Contents

- Smart photo frame
- Power adapter
- Easel
- Quick guide

Setup

- Plug in the unit.
- Press the POWER button.
- Download and open the Frames app on your phone for further instructions.



Included easel can be attached to your Smart Photo Frame.

WARRANTY CARD

Model Name D10

Product Serial No. _____

Date of purchase

--	--

--	--

--	--

dd mm yy

Customer's Details

Name _____

Address in full _____

Telephone No. _____

Dealer Name & Address _____

Customer's signature & Date

Dealer's signature with rubber stamp



Designed by BYYBUO, Assembled in PRC