

iiRcade GOLD PCBA

User Manual (Model: IRORO2-PCBA)

IIRCADE, Inc.



iiRcade GOLD PCBA Manual (Model: IRORO2 PCBA)

IIRCADE, INC.

Table of Contents

1. Information	3
2. Specification	3
3. Configuration	4
4. System Menu	6
5. Label	7

1. Information

iRcade GOLD PCBA (Model: IRORO2-PCBA), the ultimate connected arcade machine that allows gamers of all ages to own and play their favorite retro arcade games and modern games in the true arcade style at home, iiRcade will be the ultimate home arcade machine providing gamers with their favorite officially licensed modern and retro games. **This device/module is not for sale and this is a limited module installed on the game device.**

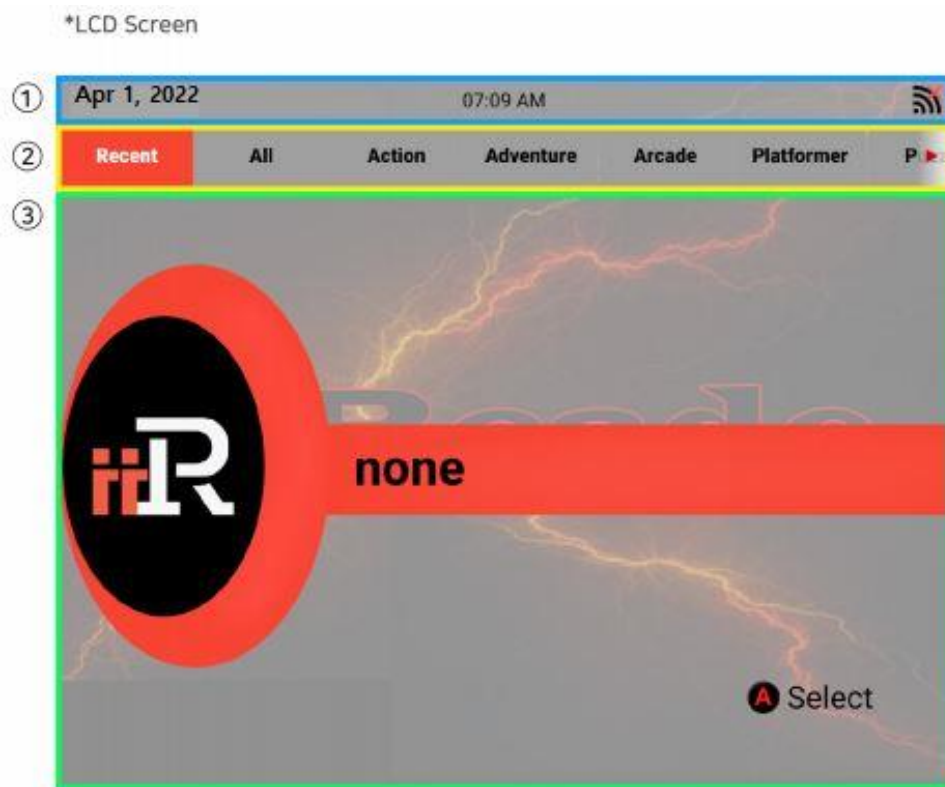
In order to install device/module, connect to PCBA with HDMI, Joystick/button and power adapter .

Unlike other arcade devices, iiRcade is not limited to just a few pre-loaded games, new games can be purchased and downloaded through the iiRcade online game store.

2. Specification

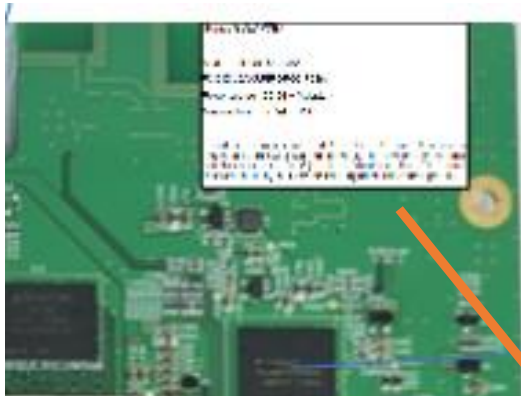
IIRCADE GOLD PCBA (Model: IRORO2-PCBA)				
System Performance				
Processor(CPU)	Rockhip RK3399 (1.8GHz Hexa-Core)			
OS	Android 9.0			
Memory	SDRAM (LPDDR4 x2 4GB), eMMC 128GB			
Wireless Interface	2.4/5GHz Dual band WiFi, Bluetooth 4.2			
I/O Port	HDMI, USB(2), Ethernet, 3.5mm Audio Out			
Physical				
Dimension	L120mm x W175mm x H20mm			
Input	DC 24V/5A			
Temperature	Storage : -20°C~60°C, Working: 0°C ~ 60°C			
Relative Humidity	0~95%			

3. System's Main Menu Screen (connecting to LCD display)



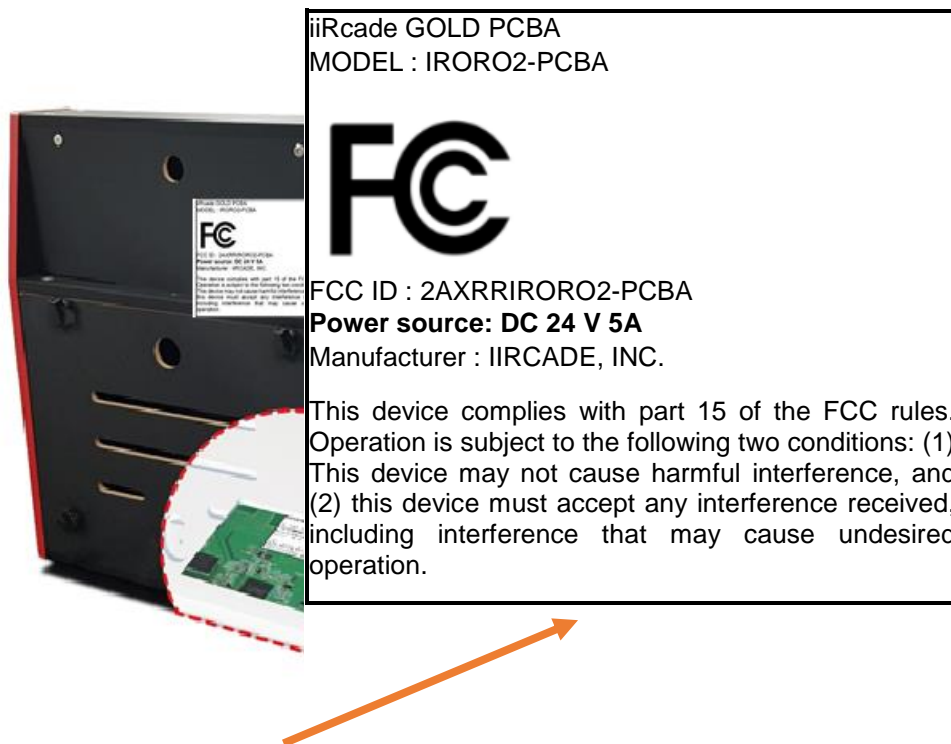
- ① **System Status Display** : Displays date, time, and Wi-Fi connection status.
- ② **Game Genre Selection Tabs** : Displays Recent games tab, All games tab, Game Genre tab, Settings tab.
- ③ **Content Area** : Displays contents of selected tab.

4. Label



iiRcade GOLD PCBA
MODEL : IRORO2-PCBA
FCC ID : 2AXRRIRORO2-PCBA
Power source: DC 24 V 5A
Manufacturer : IIRCADE, INC.

This device complies with part 15 of the FCC rules.
Operation is subject to the following two conditions: (1)
This device may not cause harmful interference, and
(2) this device must accept any interference received,
including interference that may cause undesired
operation.



FCC Compliance Statement

This device complies with part 15 of the FCC rules. Operation is subject to the following two conditions: (1) This device may not cause harmful interference, and (2) this device must accept any interference received, including interference that may cause undesired operation.

FCC Interference Statement

This equipment has been tested and found to comply with the limits for a Class B digital device, pursuant to part 15 of the FCC Rules. These limits are designed to provide reasonable protection against harmful interference in a residential installation. This equipment generates, uses and can radiate radio frequency energy and, if not installed and used in accordance with the instructions, may cause harmful interference to radio communications. However, there is no guarantee that interference will not occur in a particular installation. If this equipment does cause harmful interference to radio or television reception, which can be determined by turning the equipment off and on, the user is encouraged to correct the interference by one of the following measures:

- Reorient or relocate the receiving antenna.
- Increase the separation between the equipment and receiver.
- Connect the equipment into an outlet on a circuit different from which the receiver is connected.
- Consult the dealer or an experienced radio/TV technician for help.

FCC Caution

Any changes or modifications not expressly approved by the party responsible for compliance could void the user's authority to operate this equipment. This transmitter must not be co-located or operating in conjunction with any other antenna or transmitter.

FCC Radiation Exposure Statement

This equipment complies with FCC radiation exposure limits set forth for an uncontrolled environment. This equipment should be installed and operated with minimum distance 20 cm between the radiator and your body. This transmitter must not be co-located or operating in conjunction with any other antenna or transmitter.

IEEE 802.11b or 802.11g operation of this product in the USA is firmware-limited to channels 1 through 11.



www.iiRcade.com

Company Name | IIRCADE, INC.

Korea Branch | No.A-627, 338 GwanggyoJungang-Ro, Suji-Gu,
Yongin-Si, Gyeonggi-Do, 16942, Rep. of Korea
Tel. 82-31-893-1540, Fax. 82-31-893-1541

HQ | 5420 Old Orchard Road Suite 2A
Skokie, Illinois 60077 USA

Home page | www.iircade.com