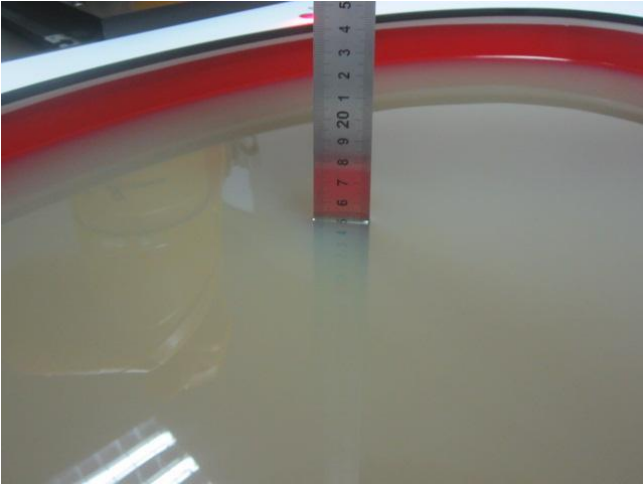
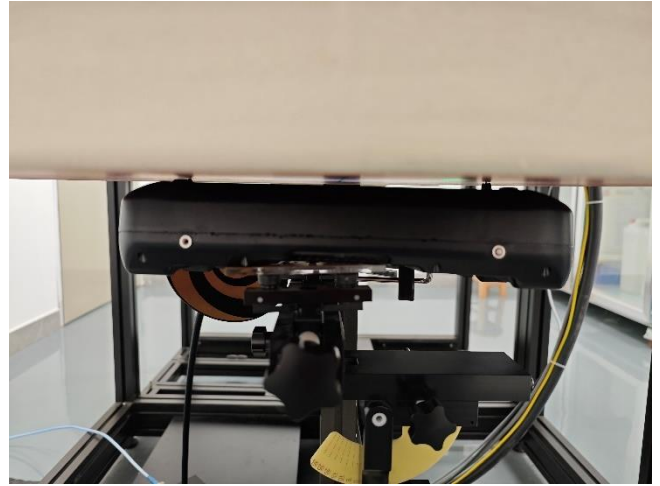


Test setup photos-SAR



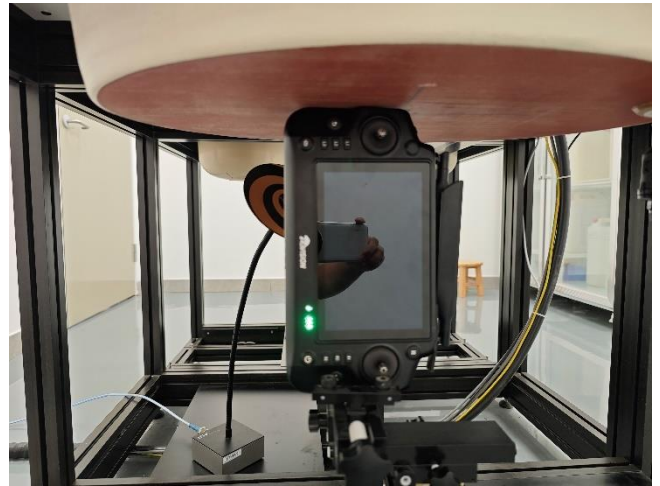
Liquid depth in the ELI phantom



Front(0mm)



Rear(0mm)



Left(0mm)



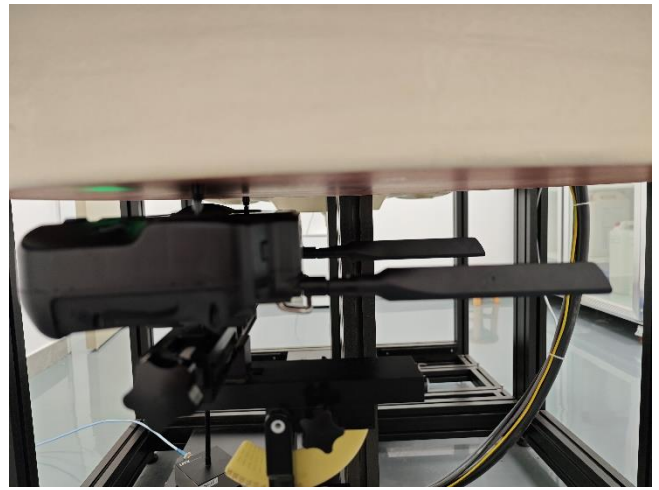
Right(0mm)



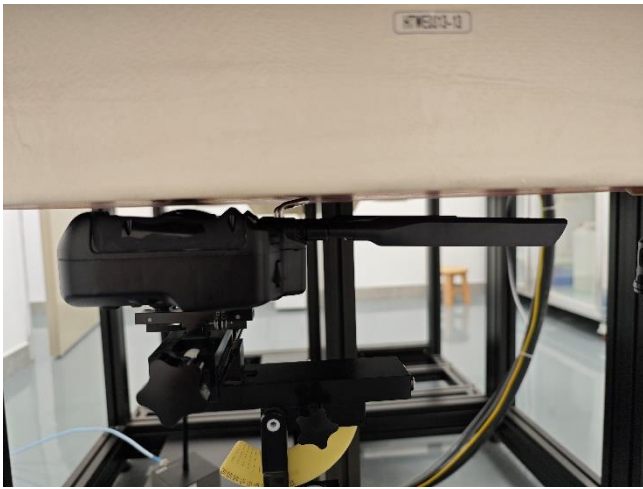
Bottom(0mm)



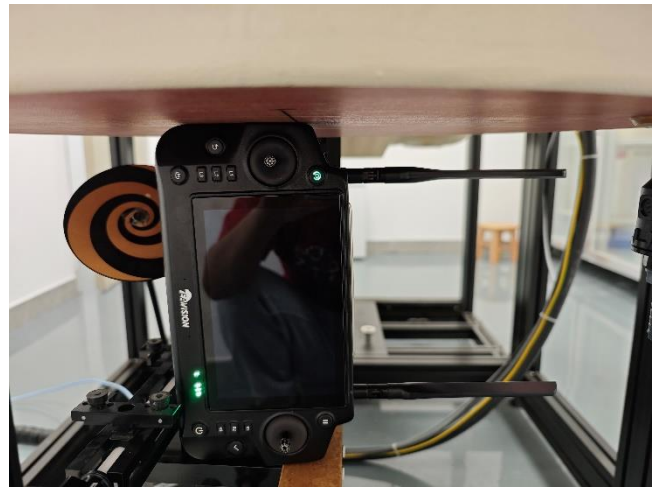
Top(0mm)-SRD 2.4G



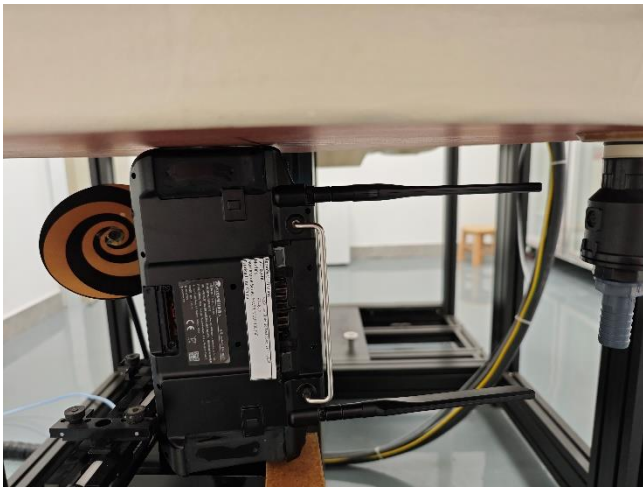
Front (0mm)-SRD 2.4G



Rear (0mm)-SRD 2.4G



Left (0mm)-SRD 2.4G



Right (0mm)-SRD 2.4G