

Smart Pet Feeder

User Manual



Contents

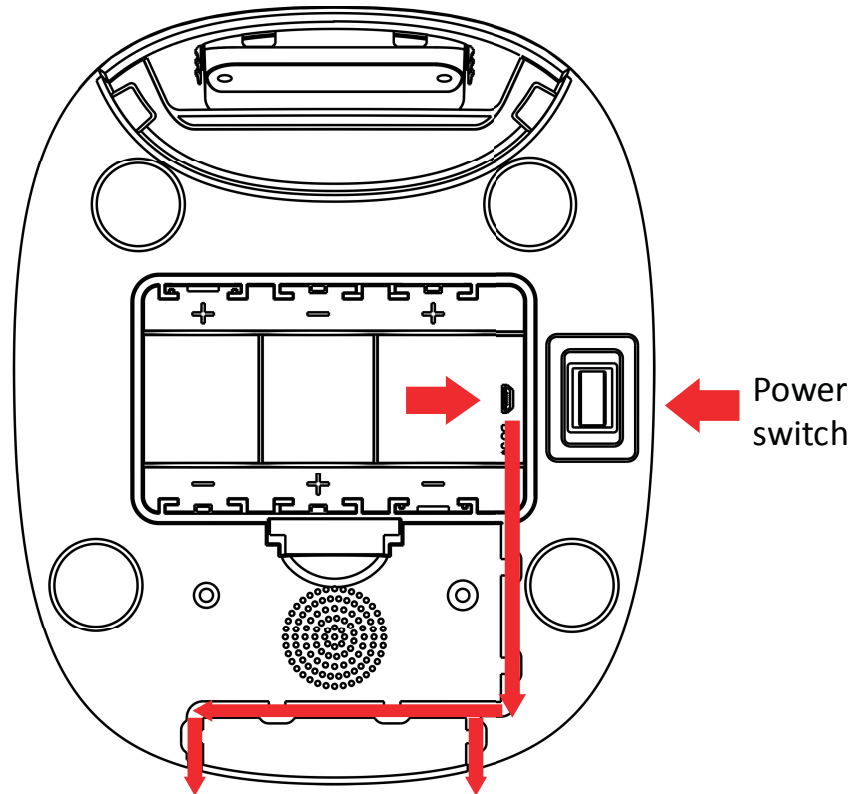
Hardware Installation and Introduction.....	1
Software Installation.....	3
Add pet feeder via QR code mode	3
Add pet feeder via AP mode.....	8
Add pet feeder via Auto Scan mode	10
Feeding	11
Manual feeding	11
Timed feeding	12
Feeding voice recording.....	13
Feeding records and alarm.....	14
Others	15
Advanced settings.....	15
Battery	17
Reset.....	18
FAQ	18

Notice:

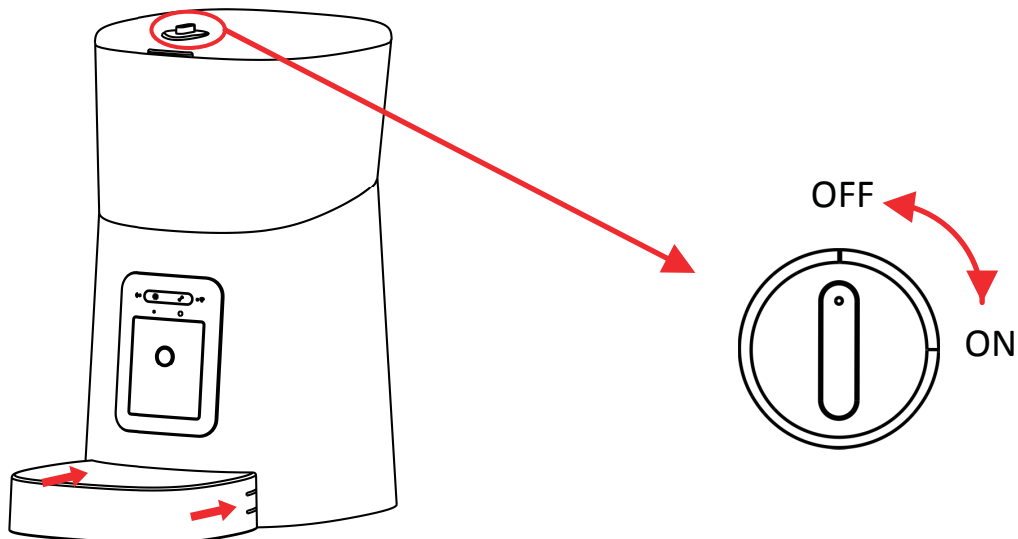
This user manual is based on the current feeder and App when it was written. If the feeder or App changes, this user manual will be updated on our website.

Hardware Installation and Introduction

1. Open the battery compartment at the bottom of the feeder, insert the Micro USB power cord into the connector at the bottom; and extend the power cord out along the designed wire guide. You can also insert 3 pieces of D cell batteries which will enable the feeder to work automatically according to your scheduled feeding plan even without an external power supply. Turn on the power switch.

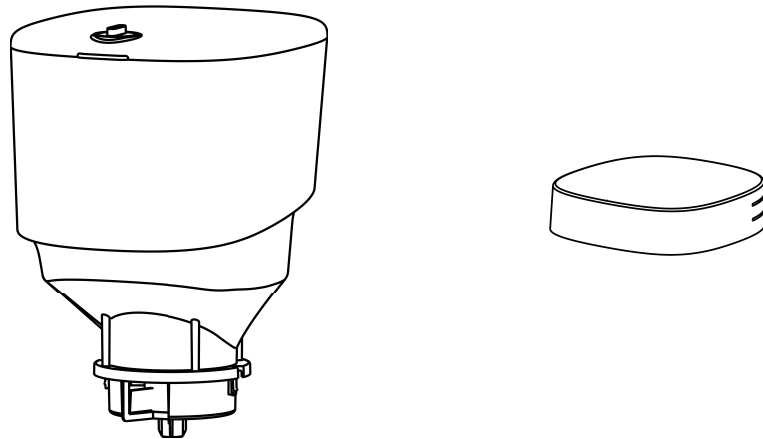


2. Rotate the knob on the top cover. The feeding tray is in the grain bucket. Place the feeding tray into the feeder from the front, then pour pet food into the feeder.

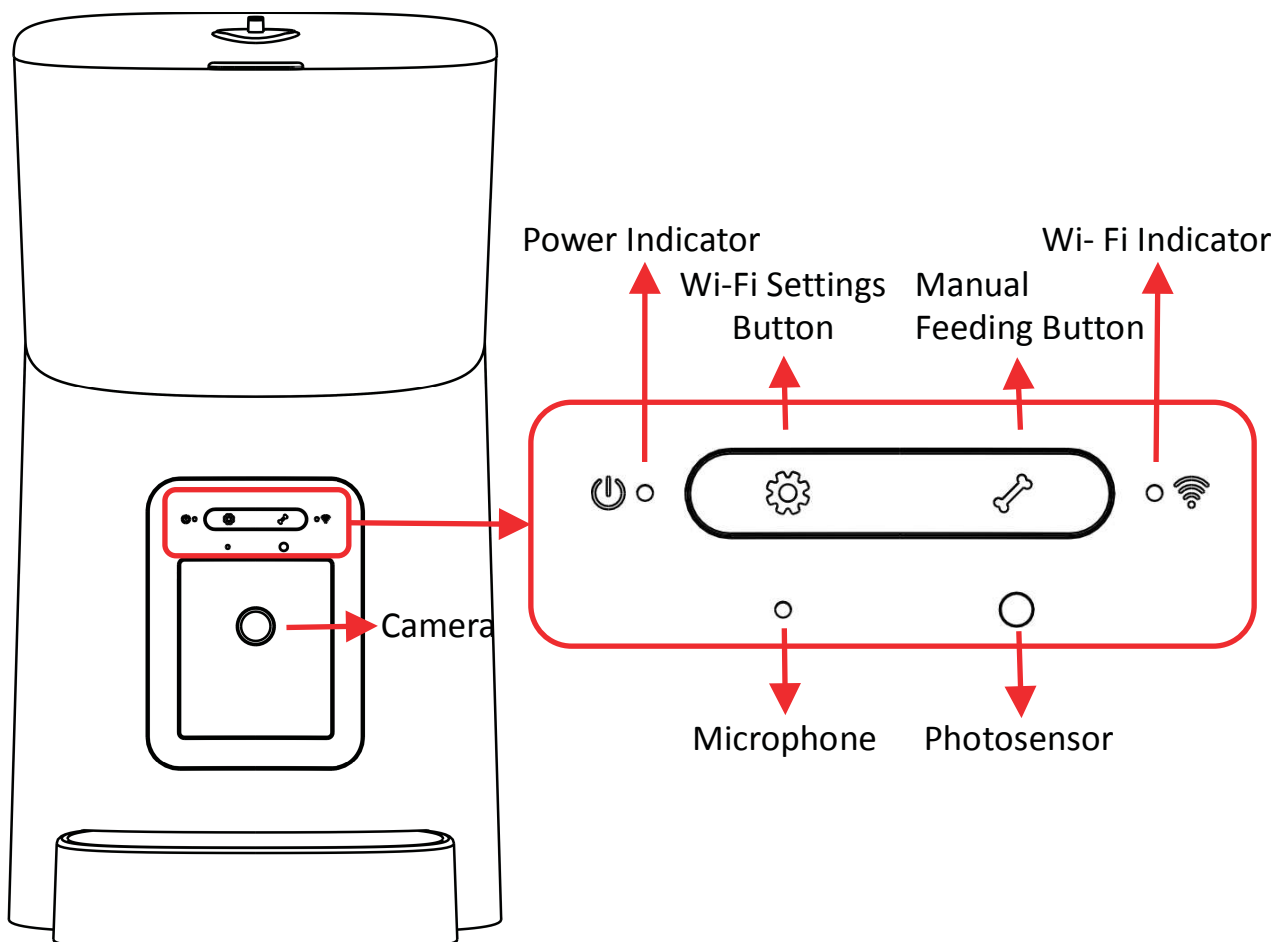


Note: Due to the wide variety of pet foods on the market, it cannot be guaranteed 100% that the mechanical structure of the feeder will fit all types of pet food. We recommend using only dry food within 5–15mm in size. Wet food and damp food are strictly prohibited from being placed in the feeder.

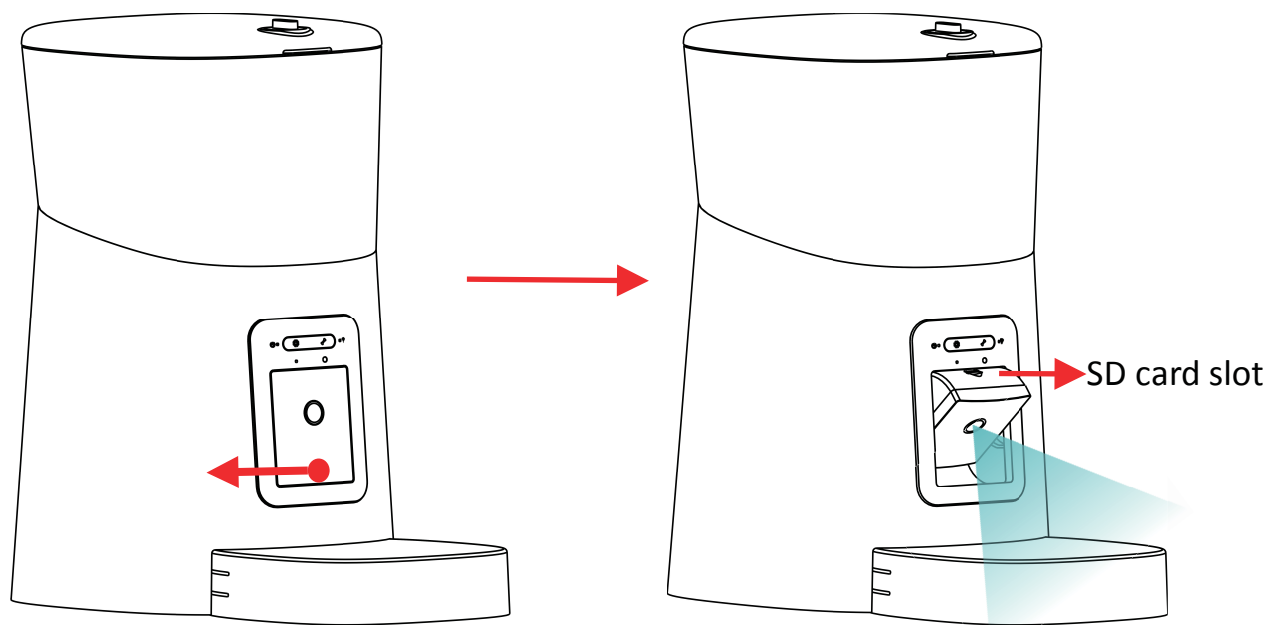
3. For your pet's health, please wash the feeding bucket and feeding tray regularly. The feeder body should not be filled with water. Please wipe it with a wring-able wet cloth.



4. Pet Feeder introduction



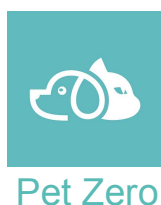
5. You can push the camera to turn down to observe the feeding tray. The feeder supports up to 4 levels of angle adjustment. It supports Micro-SD card recording, and the SD card slot is visible when the camera is turned to the bottom.



Software Installation

Add pet feeder via QR code mode

1. Search the App Store or scan the QR code below to download and install **Pet Zero**.



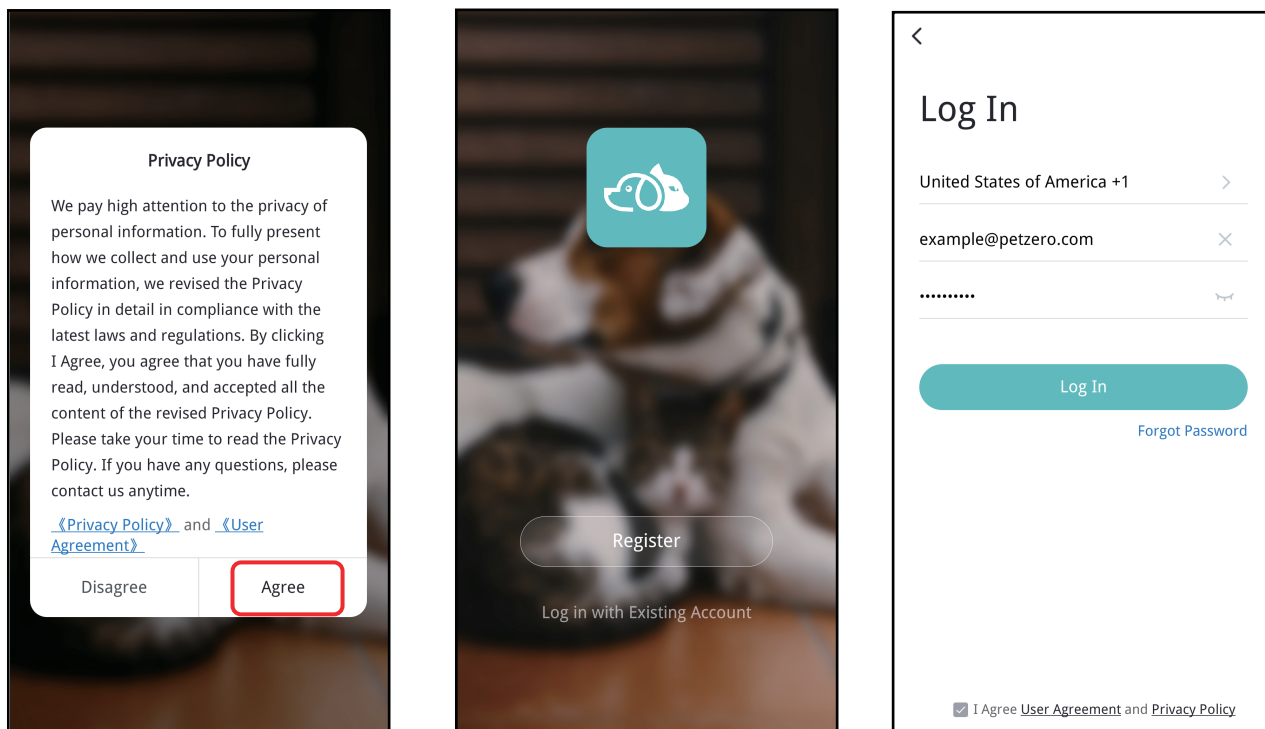
Download Website 1



Download Website 2

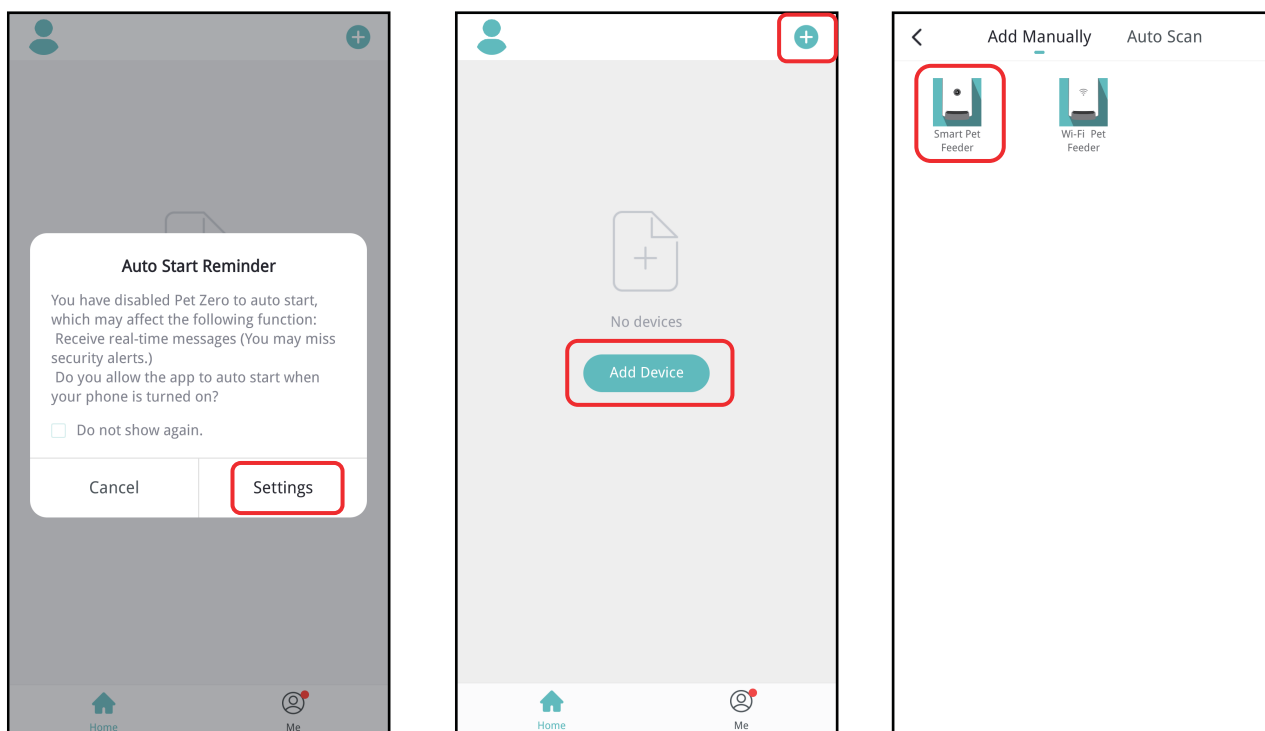
2. Run the App, read and agree to the privacy policy, and register a new account or login to a registered account. When you register or login to

the account, please choose the correct country or area.



3. When you login, the App will ask you to access certain permissions. These permissions are very important for the App so please allow them.

Click **Add Device** or **+** to add a new pet feeder. Choose the **Add Manually** tab and select **Smart Pet Feeder**.

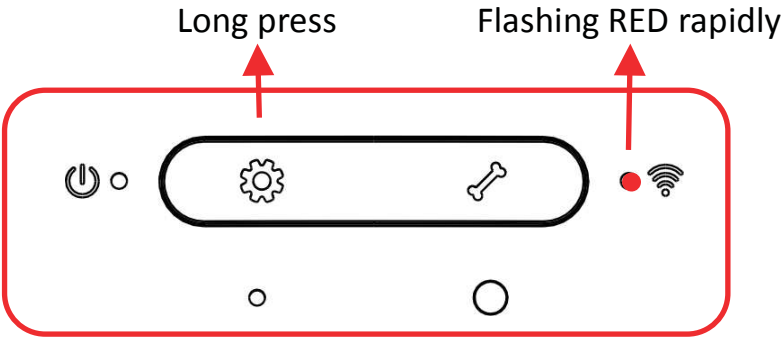
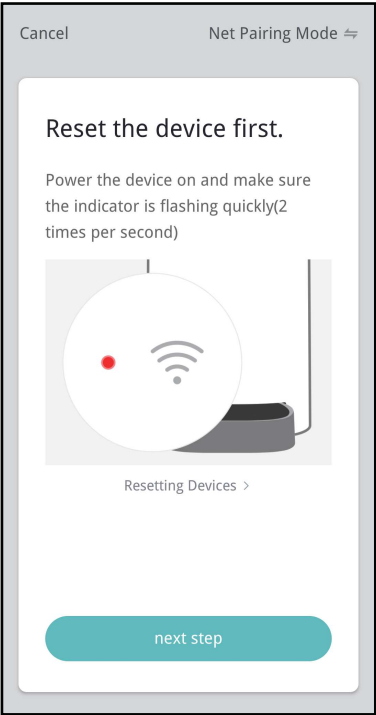


4. After turning the feeder on, wait for about 1 minute for it to boot up. Then check whether the Wi-Fi indicator is flashing RED 2 times per

second.

If yes, then click **next step** to go to the next step.

If not, please long press the **Wi-Fi Settings** button for 5 seconds until you hear a beep. After a few seconds, the feeder's indicator LED will flash RED rapidly.



Wi-Fi Indicator status:

Flashing rapidly in RED	Feeder is waiting for Wi-Fi network configuration; it is in QR code mode and auto scan mode.
Flashing slowly in RED	Feeder is waiting for Wi-Fi network configuration; it is in AP mode.
Always on in RED	Feeder is configured for the Wi-Fi network and trying to connect. If the connection fails, it will always be red.
Always on in GREEN	Feeder is connected to the Wi-Fi network. It can be turned off in the settings.

Notice: When the feeder is only powered by batteries, the power indicator and Wi-Fi indicator will turn off.