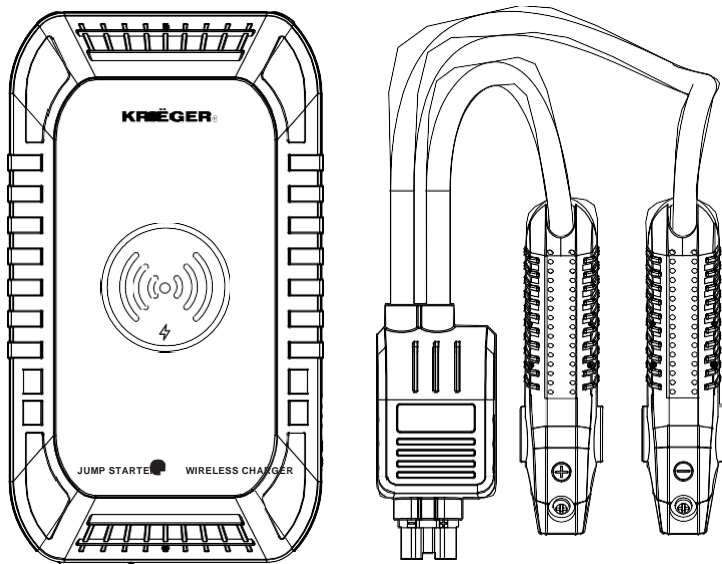


KRIEGER®



12V CAR JUMP STARTER & PORTABLE POWER BANK WITH WIRELESS CHARGING



INSTRUCTION MANUAL

model no. KRJ1000

IMPORTANT:

Please read this manual carefully before operating this jum

WARNING

- Always wear safety glasses when jump starting a battery, and gloves when handling a battery.
When jump starting a vehicle please ensure that the clamp connection is securely fitted into the jump starter socket.
- Ensure the battery clamps are connected correctly, and the connectors are free from rust and dirt. Do not allow this product to become wet.
- Do not immerse the product in water.
- Do not operate the product in explosive atmospheres, such as in the presence of flammable liquid, gas or dust.
- Do not modify or disassemble this product.
- Do not store in locations where the temperature may exceed 140°F (60°C). Charge only using the charger provided.
- Under extreme heat conditions, battery leakage may occur. Avoid contact with your skin. In case of skin or eye contact, rinse immediately with clean water and seek medical attention.

BATTERY DISPOSAL

The battery is self-contained and not consumer replaceable. The battery must be disposed of properly when it no longer holds a charge. Proper charging practices will increase the life of the product. For Information on battery recycling, call toll-free 800-822-8837.

For information regarding air travel safety with batteries please reference this website by the U.S. Department of Transportation:
<http://phmsa.dot.gov/safetravel/batteries>

NOTE: This Car jump starter and portable power bank contains the equivalent of 2.4g of lithium and gives 26.7 watt hours of power.

PROP 65 WARNING

This product contains lead, a chemical known to the state of California to cause cancer, birth defects or other reproductive harm.

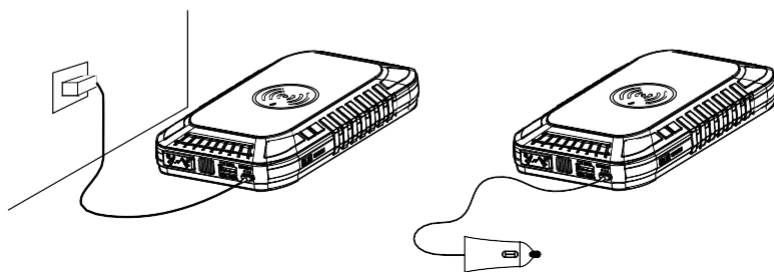
TO CHARGE YOUR JUMP STARTER

At home:

1. Plug the AC Power Adaptor into any 120V outlet.
2. Attach the DC plug into the USB-C port on the Power Bank with the equipped USB-A to USB-C cable

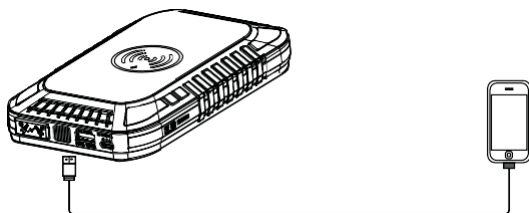
In the Car:

1. Plug the car adaptor into the socket of cigarette lighter.
2. Attach the DC plug into the USB-C port on the Power Bank with the equipped USB-A to USB-C cable.



TO POWER YOUR MOBILE DEVICES

Use the original manufacturer's USB cable that came with your device and plug it into the USB output ports. The USB charging port can charge at 5V/2A, 9V/2A or 12V/2A compatible Quick Charge technology devices or charges non-Quick Charge devices at up to 2.4A. Once you charge your device, the power level gauge will show the battery level. To check the power capacity again, simply press the power button once.



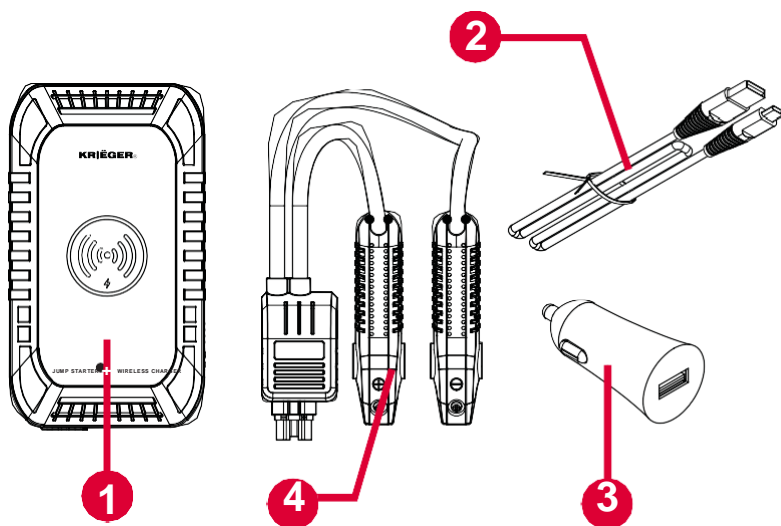
TO CHARGE USING WIRELESS CHARGING SURFACE

Make sure your device is Qi-compatible. If the case is metal, remove prior to charging. If you are having issues charging, remove your case and try again. Place the Qi-compatible device directly onto the indicated wireless charging icon. Your device will display the charging progress. Charging time will depend on the type of device.

Do not place magnetic cards or similar items near this product. Place the unit on a sturdy and flat surface during charging. Keep the unit out of reach of children

PACKAGE CONTENTS

- 1 Portable charger/wireless charger
- 2 USB-A to USB-C cable
- 3 Car DC charger
- 4 Jumper cable



PRODUCT SPECIFICATION

Product Dimensions: 5.35 x 2.99 x 0.98 inch (136 x 76 x 25 mm) Product Weight: 0.68 lbs (310g)

Multi-function Jump Starter

Démarrreur Batterie Multi-

fonction Cap.: 7,200mAh

Input (TypeC): 5V/2.4A, 9V/2A

Output: QC3.0

Temp: -13°F to 104°F / -25°C to 40°C

Start Current:

16V/500A Peak

Current: 16V/1000A

USB: QC3.0, 5V/2A, 9V/2A, 12V/2A

FUNCTIONALITIES

A Power & LED light button

D USB output port

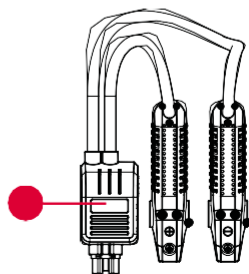
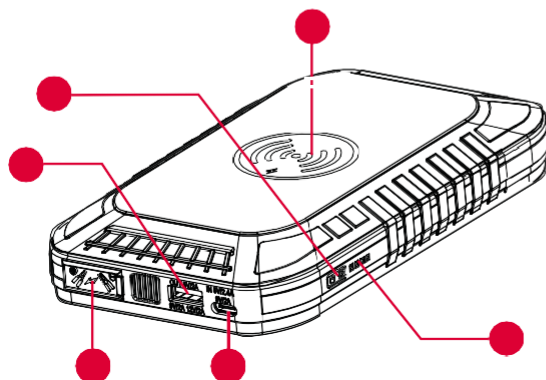
C Jumpstarter connection port

Input (TypeC): 5V/2.4A,
9V/2A

E Battery level indicator

F Wireless charging surface

G Battery clamps with cross polarity protection



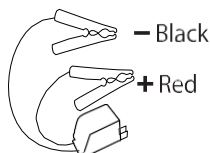
POWER LEVEL GAUGE LIGHTS

Press the power button to check the capacity of the Power Bank

Indicator Lights	1 Flashing	1 Solid	2 Solid	3 Solid	4 Solid
Battery Capacity	Below 5%	5-25%	26-50%	51-75%	76%-full

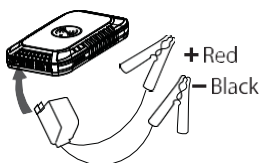
When charging, the indicator gauge will light up one by one. The number of stable lights show the battery capacity. When all the indicator lights are firm, then the Power Bank is fully topped up.

IN ORDER TO JUMP START THE AUTOMOBILE BATTERY, FOLLOW THESE INSTRUCTIONS



Jumper cables have designated colors, RED for POSITIVE (+) and BLACK for NEGATIVE (-). DO NOT allow the metal ends to touch together, this may harm the battery, charging system and/or electronics in the vehicle.

1. Press on the power button on jump starter once. Ensure that the power level gauge is 3 lights or more.
2. Take the BLACK end of the jumper cord and plug it into the power bank jump start socket which is found underneath the grey cover.



3. Fasten the RED jumper cord to the POSITIVE (+) post on the car battery. The POSITIVE battery post will be slightly bigger than the NEGATIVE post, and will be marked with a PLUS (+) sign. There may also be a RED plastic protective cover over the positive battery post.

4. Fasten the BLACK jumper cable to the NEGATIVE (-) post on the car battery. The NEGATIVE will be marked with a MINUS (-) sign. There may also be a BLACK plastic protective cover over the negative battery post.



NOTE: Do not attach the red clamp (+) and the black clamp (-) at the same time.

CAUTION: DO NOT lean directly over the battery while making jumper connections.

5. Check the LED status on the indicator box found on the BLACK jumper cable. Unless the light is flashing RED, proceed to the next step. Please refer to the LED status chart found on the next page if necessary.
6. You now have 30 seconds to start your vehicle. If it does not crank or cranks very slowly, secure the jumper connections to make sure there is a good contact on battery posts of the vehicle. Then try again. The engine should start if there are no other issues (such as a bad starter or ignition circuit issues). Do not attempt to jump start the vehicle more than 3 times from the jump starter. If the vehicle fails to start then it is likely that there is another issue.
7. Please detach the jumper cables from the vehicle within 30 seconds.

- Remove the RED/POSTIVE end first and then the BLACK/NEGATIVE clamp.
 - Do not allow the metal ends of the jumper cables to touch each other or the RED cables to touch anything metal on the car.
- Now unplug the BLUE end of the jumper cable from the power bank. This will reset the jumper cable. In 10 seconds the power bank will power off automatically.
8. Keep the engine running 20 to 30 minutes, or drive the car to recharge the battery.

NOTE: If the engine dies shortly after it has been jump started, or as soon as the jumper cables are disconnected, it probably means the vehicle charging system is not working (bad alternator, voltage regulator, wiring problem or loose/dirty battery cables). Please mechanic or vehicle's manufacture for assistance.

TO USE A FLASHLIGHT

Press the power button for 3 seconds to start the LED illumination. You can then select from 2 modes (On/SOS) by pressing the power button lightly in sequence.

POLARITY PROTECTION CIRCUIT STATUS

Status (Light & Sound)			Mode
Red	Green	Sound	
○	●	None	The car battery is ready for jump start.
●	○	None	The Power Bank needs to be charged.

● On  Flashing ○ Off

model no. KRJ1000 | contact us 1-866-295-6775

This device complies with part 15 of the FCC Rules. Operation is subject to the following two conditions:

- (1) This device may not cause harmful interference, and (2) this device must accept any interference received, including interference that may cause undesired operation.

Changes or modifications not expressly approved by the party responsible for compliance could void the user's authority to operate the device.

NOTE: This equipment has been tested and found to comply with the limits for a Class B digital device, pursuant to part 15 of the FCC Rules. These limits are designed to provide reasonable protection against harmful interference in a residential installation. This equipment generates, uses and can radiate radio frequency energy and, if not installed and used in accordance with the instructions, may cause harmful interference to radio communications. However, there is no guarantee that interference will not occur in a particular installation. If this equipment does cause harmful interference to radio or television reception, which can be determined by turning the equipment off and on, the user is encouraged to try to correct the interference by one or more of the following measures:

- Reorient or relocate the receiving antenna.
- Increase the separation between the equipment and receiver.
- Connect the equipment into an outlet on a circuit different from that to which the receiver is connected.
- Consult the dealer or an experienced radio/TV technician for help.

This device contains licence-exempt transmitter(s)/receiver(s) that comply with Innovation, Science and Economic Development Canada's licence-exempt RSS(s). Operation is subject to the following two conditions:

- (1) This device may not cause interference.
- (2) This device must accept any interference, including interference that may cause undesired operation of the device.

L'émetteur/récepteur exempt de licence contenu dans le présent appareil est conforme aux CNR d'Innovation, Sciences et Développement économique Canada applicables aux appareils radio exempts de licence. L'exploitation est autorisée aux deux conditions suivantes :

- 1) L'appareil ne doit pas produire de brouillage;
- 2) L'appareil doit accepter tout brouillage radioélectrique subi, même si le brouillage est susceptible d'en compromettre le fonctionnement.

WARRANTY AND RETURNS

IF ANY PARTS ARE MISSING OR DAMAGED, OR IF YOU HAVE ANY QUESTIONS, PLEASE CALL OUR TOLL-FREE HELPLINE AT 1-866-295-6775

Read and understand this instruction manual thoroughly before using the product. It contains important information for your safety as well as operating and maintenance advice.

Keep this instruction manual for future use. Should this product be passed on to a third party, this instruction manual must be included.

The English version of this manual is available online at:
www.kriegermfg.com

Bright Manufacturing LLC and/or its affiliates are not responsible for a user's intended or actual use of the car jump starter. In no event shall Bright Manufacturing LLC and/or its affiliates have any liability for any losses (whether direct or indirect, in contract, tort or otherwise) incurred in connection with the car jump starter, including but not limited to damaged property, personal injury and/or loss of life. Neither shall Bright Manufacturing LLC and/or its affiliates have any liability for any decision, action taken based on relying on the stability or performance of the car jump starter.

Bright Manufacturing LLC and/or its affiliates, the manufacturer, distributor and seller shall not be liable for any injury, loss or damage, incidental or consequential, arising out of the use or intended use of the product.



This Krieger jump starter product carries a one (1) year warranty against defects in workmanship and materials. At its discretion, Bright Manufacturing agrees to have any defective part(s) repaired or replaced free of charge, within the stated warranty period, when returned by the original purchaser with proof of purchase. This product is not guaranteed against wear or breakage due to misuse and/or abuse.

Bright Manufacturing LLC and/or its affiliates, the manufacturer, distributor and seller shall not be liable for any injury, loss or damage, incidental or consequential, arising out of the use or intended use of the product.

MADE IN CHINA

IMPORTED BY
BRIGHT MANUFACTURING
LLC, FORT LAUDERDALE, FL

NOTE