

FX-D 200
User Manual

• Security Information.....	1
• Introduction to Camera Components.....	2
• Installing batteries and charging.....	4
• Preview interface.....	5
• Film mode vs digital mode operate.....	6
• Fn menu.....	7
• Photo menu.....	8
• Video menu.....	9
• System Settings Menu.....	10
• Replay videos and photos.....	11
• Playback Menu.....	12
• APP.....	13
• Technical Specification	14
• Fault problems and solutions.....	14
• Name and content of harmful substances in the product.....	15

Security Information

Before using this product, please read the following safety instructions and follow all routine safety precautions.

Any operation that does not comply with this manual may result in damage to this product.

Warning

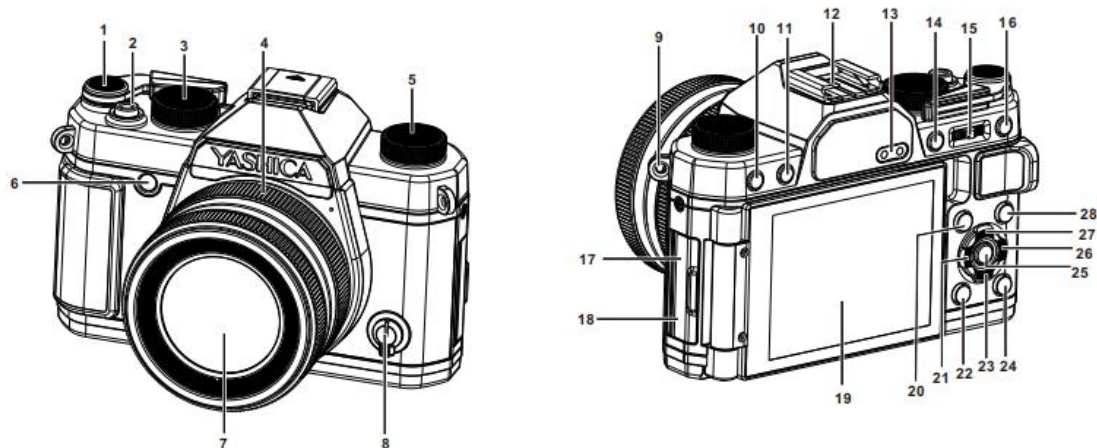
If the battery is used improperly, it may explode, cause a fire, or even chemically burn. Please follow the following precautions:

1. Do not disassemble to avoid short circuiting the battery, do not let metal come into contact with battery terminals, do not crush the battery pack, and do not let the battery pack be subjected to external forces such as knocking, falling, or stepping.
2. Do not place it in high temperatures exceeding 60 degrees Celsius, avoid direct sunlight or park it in a car under intense sunlight.
3. Do not burn or discard in the fire; Do not use damaged or leaking lithium-ion batteries.
4. Please keep the battery out of reach of children; Please keep the battery dry.
5. When using the power adapter, please connect it to the nearest wall socket. If any problems occur while using the device, please immediately unplug the power adapter from the wall socket.

be careful

1. Electromagnetic waves of specific frequencies may affect image quality.
2. Before you start working with this product, please make a trial video to familiarize yourself with its use.
3. When the machine malfunctions, do not disassemble or repair it arbitrarily. Only authorized maintenance personnel can carry out repairs on the machine.
4. If not used for a long time, please charge the device to about 50% every three months before storing it to effectively extend the battery life,
Please fully charge before use.

Introduction to Camera Components



1	Film mode lever	Switch between digital mode or film mode.
2	Photo button	Two segment button, lightly press to focus in photo and video modes; Press again to take a photo in photography mode; In other modes, simply tap to exit the preview mode.
3	mode dial	Clockwise cycle switching : P-S-Macro-SCN-VIDEO-C1-C2-C3-C4-AUTO (Which mode does the rotation of the mode point to? It is the mode when the power is turned on.)
4	Focusing Ring	Fixed focal segment adjustment ring, quick switching between A, 50mm, 85mm, 150mm, and 240mm. (The W/T key can be operated in gear A, disabled in other gears.)
5	Filter knob	Clockwise cycle switching , digital mode : Std>Nat>Vi>BW>Neg>HIC>Warm>Cold>Red>Green>Yellow>Blue film mode : YASHICA 400 > YASHICA Ruby 60s > YASHICA Sapphire 70s > YASHICA Golden 80s >YASHICA Mono 400 > YASHICA B&W 400
6	AF Assist Lamp	Assist in focusing below LV6 in dark environments.
7	Camera lens	View the scene.

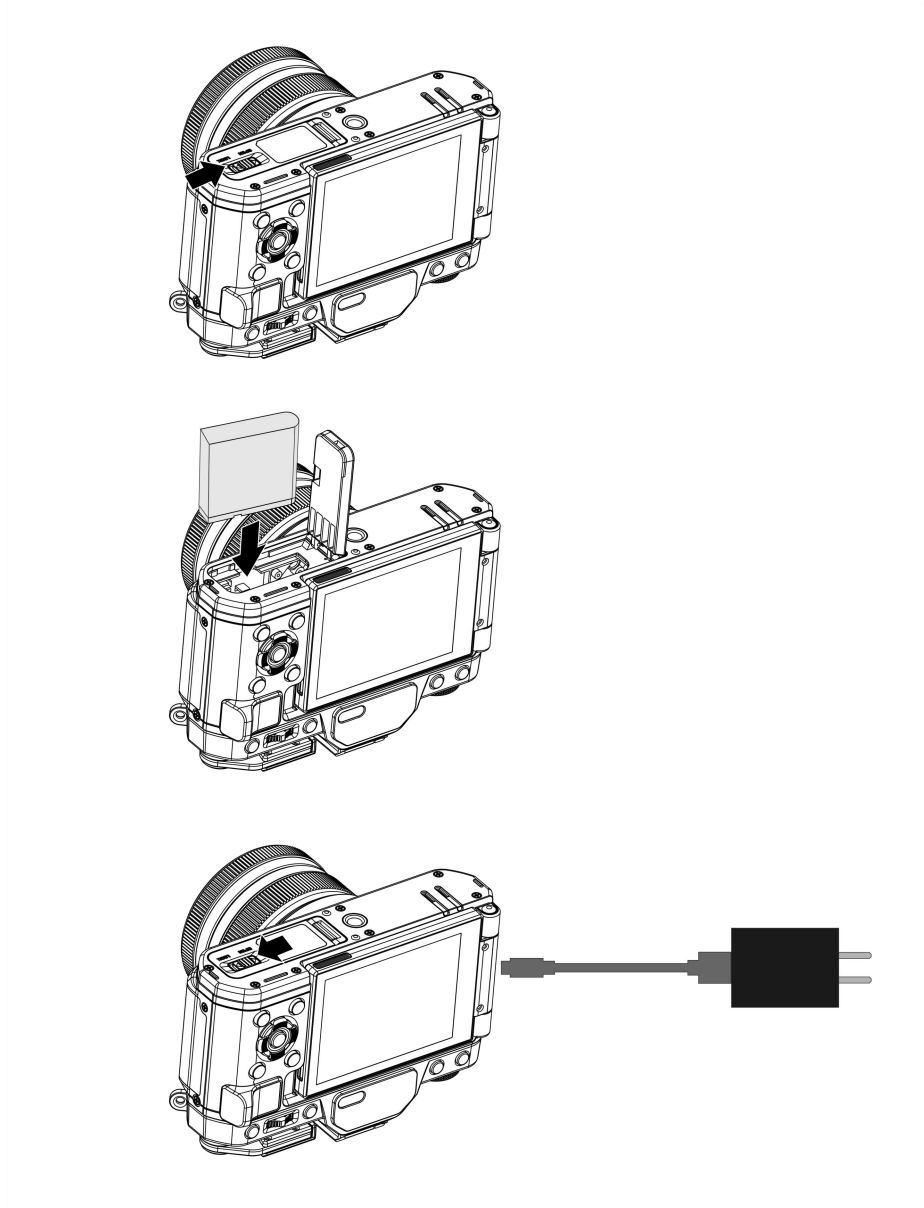
8	AF/MF Switch	Quick switching between AF (AF+MF) or MF.
9	Hanging rope components	For Camera lanyard.
10	Filter Button	Set Filter parameters.
11	Power button	Press and hold for 2 seconds to turn on/turn off.
12	Hot shoe interface	External dedicated flash for external use.
13	Film mode indicator light	Display the status indicator light for the film mode function, as shown in the figure.
14	Exposure lock key/Focus lock key	Simultaneously lock/unlock the current exposure and current focus.
15	W/T zoom key	When in video/camera mode, adjust the zoom by moving left and right; Switch the W terminal in playback mode to enter playback thumbnail mode; stay When replaying images, turn the T terminal to zoom in and view; In MF mode, press the middle button to switch between W/T function and manual focus function.
16	Record button	Start/Stop Recording.
17	MIC microphone interface	External microphone.
18	USB interface	External USB cable for charging/connecting to computer. (Charging indicator light : It stays on during charging and turns off when fully charged.)
19	Display	Preview of camera images and playback of local video photos.
20	Menu key	Retrieve the function list.
21	Left click (-)	Select to the left in the menu; In P/S mode, the EV/Shutter parameters below can be directly switched; Replay video 2X fast return.
22	Playback key	Enter/exit playback mode; End playback when replaying the video.
23	OK button	Enter SCN sub menu options in SCN mode; Confirm function in the menu; Replay video playback or pause playback.
24	Delete key	Retrieve the delete menu.
25	Down key (DISP key)	Switch the display mode of the screen; Switch down the menu in the menu; Reduce the volume when playing videos in playback mode.
26	Right click (+)	Select to the right in the menu; In P/S mode, the EV/Shutter parameters below can be directly switched; Replay video 2X fast forward.
27	Up key (EV key)	EV shortcut menu; Select upwards in the menu; Increase the volume when playing videos in playback mode.
28	Fn menu key	Quickly access the Fn function list.

Notes :

- When using the flash, please manually turn it on and press the flash button to select the function, while also turning on the menu flash function option.

- Flash cannot be used in continuous shooting mode and recording mode.

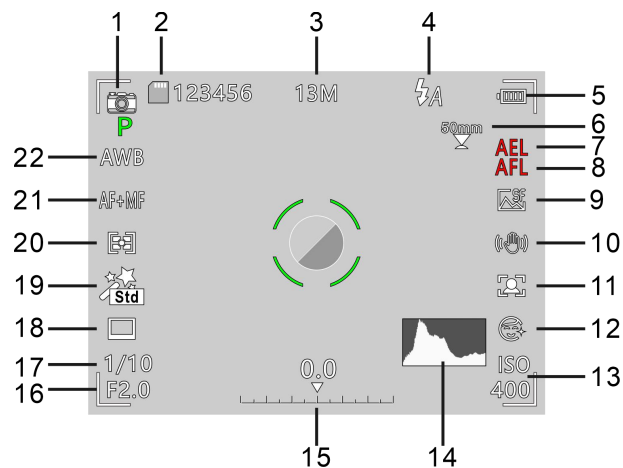
Installing batteries and charging



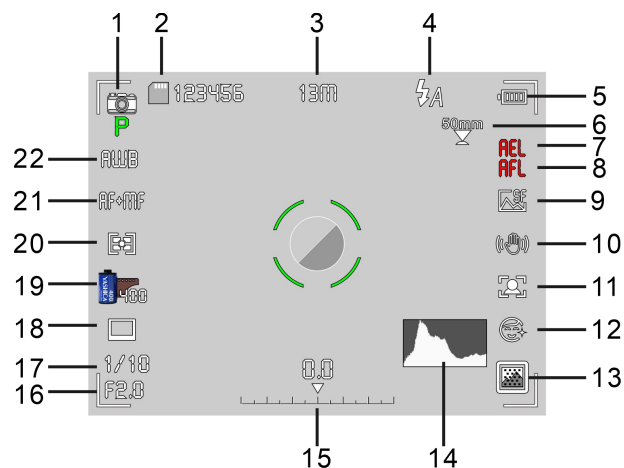
Notes :

- Install the battery into the camera according to the direction shown in the diagram.
- Low battery display: When the voltage of the battery is too low, the battery level icon in the upper right corner of the display screen will turn red. Please charge the battery promptly after low battery appears to avoid affecting your use.
- When using a memory card that has been used by other devices for the first time, be sure to perform formatting on the camera.
- It is recommended to use regular U3 level storage cards. Storage cards below U3 level cannot be guaranteed to function properly.

Preview interface



Digital mode:



Film mode:

1	Shooting mode	12	Beauty
2	Remaining number of available photos	13	ISO sensitivity value Or Grain
3	Photo resolution	14	Histogram
4	Flash status	15	Exposure compensation value
5	Battery icon	16	Aperture value
6	Fixed focal segment Or W/T zoom bar	17	Shutter value
7	Exposure Lock	18	Single shot/continuous shooting/timed photography
8	Focus Lock	19	Filter status
9	Image quality status	20	Metering Modes status
10	Image Stabilization	21	Focus modes status
11	Face tracking	22	White Balance status

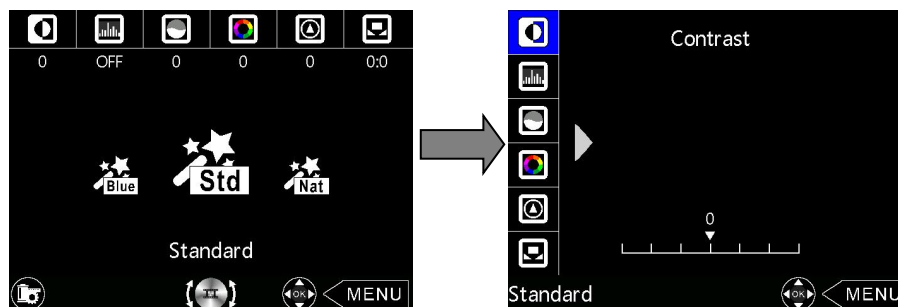
Notes :

1. The icons displayed on the interface of film mode and digital mode are different.
2. Auto/SCN mode does not support the function on page 3.4 of the photo menu, nor does it support the film mode function.

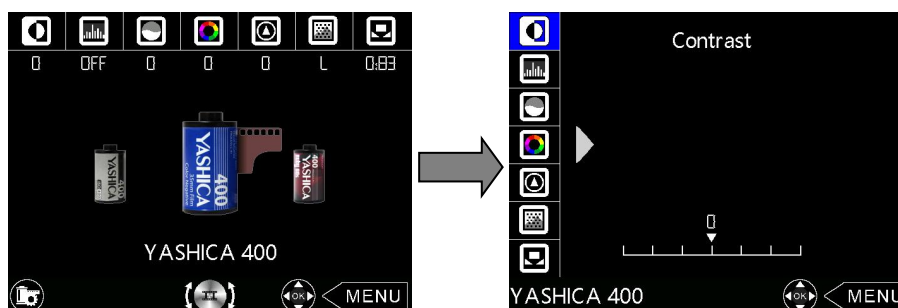
Film mode vs digital mode operate

1. Press and hold for 2 second to turn on the camera and enter the preview main interface.
2. There are two ways to choose a filter
 - A : Simply turn the filter knob, but the filter on the preview screen will change.
 - B :Press the filter button to display the filter selection page.
- 3.Filter parameter settings:Press the filter button on the filter interface to enter the parameter settings interface, press the "OK" button to confirm the settings (single item) and return to the left selection. Press the menu to discard the settings of a single item and return to the left selection.

Digital mode:



Film mode:



Notes: Film Mode /Digital Mode



The lever is in digital mode at this position

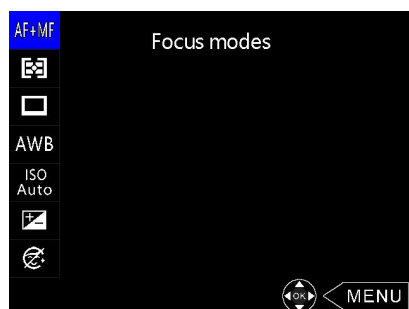


Pull the lever to the 20 ° position to activate the film mode



1. When opened, the green light on the left side lights up
2. After fully adjusting the lever, both green lights will light up simultaneously
3. After pressing the photo button, the green light on the right goes out, but the green light on the left remains on
4. Press the display screen to show the photo taken (in this state, you can press the delete button to delete the photo), until the full pole is pressed again to return to the preview screen, or push back the lever to return to the preview screen after pressing the photo button. The green light on the right will turn off, but the green light on the left will remain on
5. Push the lever back and turn off the green light on the left side

Fn menu



【Press the Fn key on the preview main interface to bring up the Fn menu, Press the up and down keys to select various menus, press the OK key to confirm and return to the preview interface, or press the menu key to cancel and exit the Fn menu】








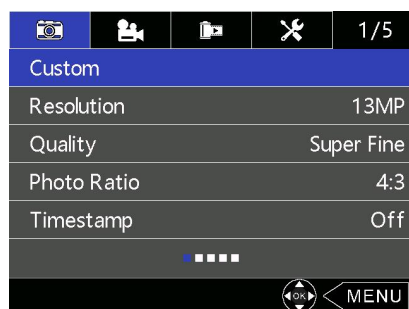
	Focus modes	AF/AF+MF , Choose your focus method.
	Metering Modes	Average/Center/Spot , you can choose the desired way to take photos.
	Drive Mode	Single Shooting/Continuous Shooting:3/Continuous Shooting:5/Continuous Shooting:7/Self-timer: 2 sec/Self- timer: 5 sec/Self- timer: 10 sec, can choose single shot/continuous shot/fixed shot for taking photos.
	White Balance	Auto/Daylight/Cloudy/Tungsten Light/Fluorescent(H)/Fluorescent(L)/Color Temperature 3000K~9000K, with the option to select the desired white balance parameters for photography.
	ISO	ISO Auto/ISO 100/ISO 200/ISO 400/ISO 800/ISO 1600/ISO 3200 , You can choose the desired IOS sensitivity for taking photos.
	Exposure Compensation	-3.0~+3.0, you can choose the desired way to take photos.
	Beauty	Off/On, you can choose the desired way to take photos.

Photo menu



【Press the menu button on the preview main interface to enter the photo menu, select by pressing up/down/left/right, confirm by pressing the OK button, and exit by pressing the menu button】

Custom	C1/C2/C3/C4 (Custom function is only in P/S mode; Custom Reset function in C1/C2/C3/C4 modes)
Resolution	24MP/13MP/8MP
Quality	Super Fine/Fine/Normal
Photo Ratio	4 : 3/16 : 9
Timestamp	Off/Date
Focus modes	AF/AF+MF
Real time focusing	Off/On
Face Tracking	Off/On
AF Assist Lamp	Off/Auto
White Balance	Auto/Daylight/Cloudy/Tungsten Light/Fluorescent(H)/Fluorescent (L)/Color Temperature (3000K~9000K) (Press the Filter Button to enter the Color Temperature sub menu in white balance and select settings)
Filter	Standard/Natural/Vivid/Monotone/Negative/High Contrast/Warm Tone/Cold Tone/Red Tone /Green Tone/Yellow Tone/Blue Tone
Beauty	Off/On
Exposure Compensation	-3~+3
ISO	ISO Auto/ISO 100/ISO 200/ISO 400/ISO 800/ISO 1600/ISO 3200
Metering Modes	Average/Center/Spot
Flash Mode	Off/Auto Flash/Fill Flash
Drive Mode	Single shooting/continuous shooting:3/continuous shooting:5/continuous shooting:7/Self-timer: 2 sec/Self- timer: 5 sec/Self- timer: 10 sec
Interval Timer Shooting	Off/3 Sec/5 Sec/10 Sec/30 Sec/1Min
Interval Mode Duration	Unlimited/5 Min/10 Min/15 Min/20 Min/30 Min/60 Min
Image Stabilization	Off/On
File Format	JPG/JPG+DNG

Custom mode

1. The storable modes are P and S.
2. C1, C2, C3, and C4 are all preset values for P mode without storage.
3. After changing any parameter in P or S mode (menu option function on page 3.4 of the photo menu), it needs to be stored in one of C1, C2, C3, or C4 through the action of Menu/Custom.
4. The parameters stored in C1, C2, C3, and C4 cannot be permanently changed without the action of Menu/Custom.

Custom Reset in C1, C2, C3, and C4 modes only restores the menu option function on page 3.4 of the photography menu.

Explanation: If a parameter (A parameter) has already been stored in C1 mode, the parameter can be modified in C1 mode, but it cannot be stored. For example, if C1 modifies some parameters (B parameter) without going through the Menu/Save save action, and the user changes the MODE to another mode and then returns to C1 or shuts down and restarts, the parameter of C1 is A parameter instead of B.

Video menu

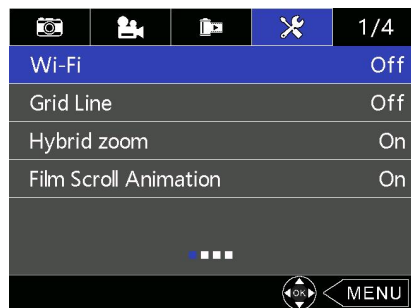


【After entering the photo menu by pressing the menu button on the preview main

interface, press the up button and then the right button again to switch to the recording menu interface (or you can directly press the right button continuously to switch to the recording menu interface). Press up/down/left/right to select, press OK to confirm, and press the menu button to exit】

Resolution	4K30FPS/2.7K60FPS/2.7K30FPS/1080P120FPS/1080P60FPS/1080P30FPS/720P120FPS/720P60FPS/720P30FPS
Image Stabilization	Off/On
Pre Record	Off/On
Timestamp	Off/Date
Microphone	0~20
Slow Motion	Off/1080P 4X/1080P 2X/720P 4X/720P 2X
Loop Recording	Off/1 Min/3 Min/5 Min
Time-Lapse Video	Off/1 Sec/3 Sec/5 Sec/10 Sec/30 Sec/1Min
Duration	Unlimited/5 Min/10 Min/15 Min/20 Min/30 Min/60 Min

System Settings Menu



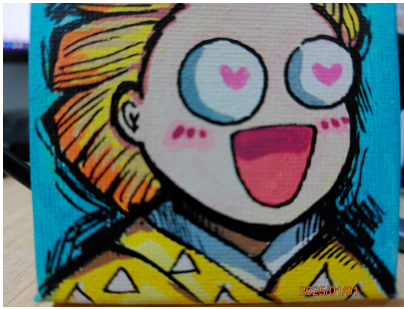
【After entering the photo menu by pressing the menu button on the preview main

interface, press the up button and then right-click three times to switch to the system settings menu interface (you can also directly right-click to switch to the system settings menu interface). Press up/down/left/right to select, press OK to confirm, and press the menu button to exit】

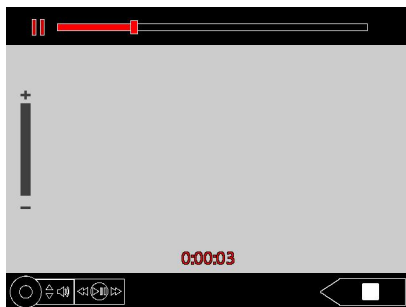
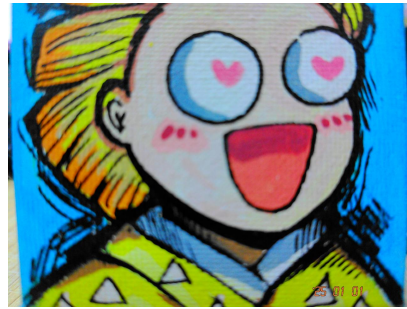
Wi-Fi	Off/On
Grid Line	Off/White Line/Yellow Line/Red Line
Hybrid zoom	Off/On
Film Scroll Animation	Off/On
Focus Mark	Off/On
Sounds	Shutter (Off/On) Power (Off/On) /Button (Off/On) /Volume (Off/Low/Standard/High)
Date&Time Setup	Date and time settings
Date Format	YY/MM/DD MM/DD/YY DD/MM/YY
Language	English/日本語 /Français/Deutsch/Italiano/Español/Português/PolSKI/Čeština/Ελληνικά Svenska/Suomi/Dansk/Románă
Screen Brightness	Low/Middle/High
Screen Saver	Off/1 Min/2 Min/3 Min
Auto Power Off	Off/5 Min/10 Min
Frequency	50HZ/60HZ
Format Card	Yes/No
Restore Factory Settings	Yes/No
Version	Displays the current software version number.

Playback/Replay Videos and Photos

Digital Photo:



Film Photo :



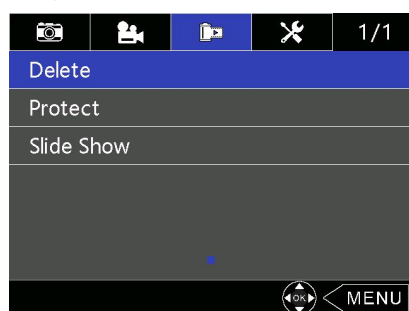
- Power On: Press and hold the power button for 2 seconds to turn on the camera and access the preview main interface.
- Playback Mode: Press the Playback button to enter playback mode.
- Switching between photos and videos: Use the Photo button and Video button to toggle between photos and videos. Press the Fn button to switch among video playback, photo playback, and combined playback.

Notes : The icons displayed on the interface of film mode and digital mode are different.

Video Playback Controls:

- During video playback, press the OK button to play or pause.
- Press the left button twice to rewind (2x)
- Press the right button twice to fast forward.
- Press the up button to increase volume
- Press the down button to decrease volume
- Press the playback button to stop the video playback
- Zoom Functionality: Adjust to the T-end of the zoom switch to zoom in on a specific area of the photo.
- Zoom Functionality: Adjust the W-end to zoom out.
- Thumbnail Mode: Adjust the W-end to enter thumbnail mode.

Playback Menu



【In the preview main interface, after entering the playback mode, press the menu button to enter the playback menu. Press up/down/left/right to select, press OK to confirm, and press the menu button to exit】

Delete	Current/All
Protect	Protect This File/Unprotect This File/Protect All/Unprotect All
Slide Show	2 Sec/5 Sec

Notes :

- Press the 'Delete' button in standby mode to choose to delete the last captured file.
- Locked files cannot be deleted and must be manually unlocked.

APP

- YASHICA App download and installation

1 Scan the QR code below directly with your phone to download and install.

App name: YASHICA



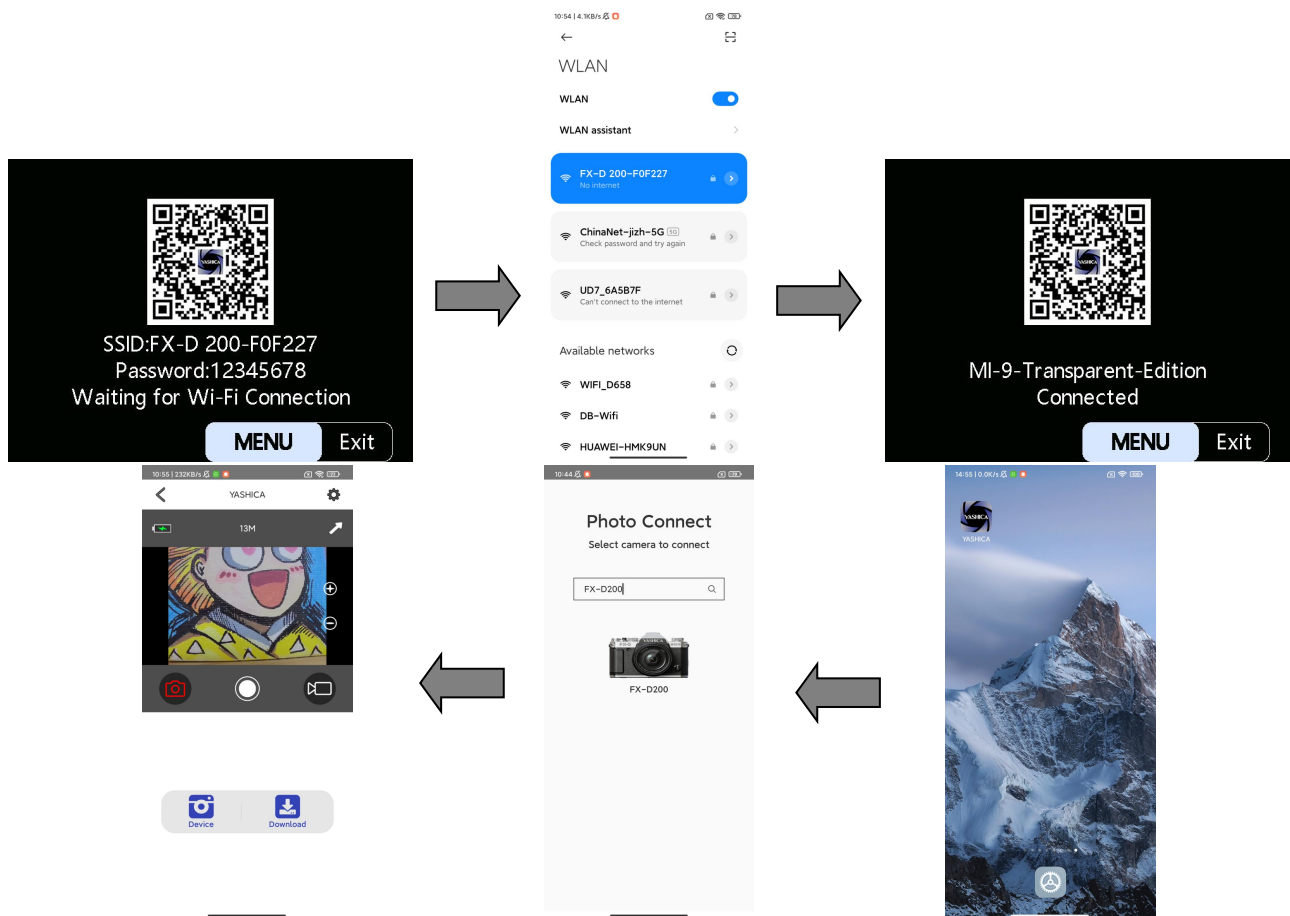
2 Download and install “YASHICA” directly by searching for it on the App Store or mobile app (Google Play) store.

- If the phone shows the following: “Do you want to allow the app to obtain usage permission during installation? Please select 'Yes' for all options.”
 - While waiting for more than one minute to connect, the Wi-Fi function will automatically exit.
 - This Wi-Fi function is a limited distance point-to-point wireless connection, with a maximum distance of about 3 meters. Please use this function within the effective distance.
 - Due to different mobile phone brands and configurations, sometimes entering the main interface of the App may be slow or the camera is not connected. Please try connecting again.
- Connecting to Wi-Fi

After entering the photo menu by pressing the menu button on the preview main interface, press the up button and then right-click three times to switch to the system settings menu interface (you can also directly right-click to switch to the system settings menu interface), turn on Wi-Fi, and search for the

Wi-Fi name on the phone: FX-D 200-XXXXXX.

Enter the password 12345678, click on YASHICA to enter the APP preview interface, and start operating.



- When Wi-Fi fails to connect:
 1. Restart the local camera and try the above connection steps again.
 2. Confirm whether the Wi-Fi password is entered correctly. The default Wi-Fi password for the camera is 12345678.

Technical Specification

Product Name	YASHICA FX-D 200 Digital Camera
Sensor	CMOS sensor
Aperture and focal length	F./2.0~ 3.1 f:4.90mm~49.00mm
Display	2.8" screen and 4:3 display
Digital Zoom	10X optical zoom 4X digital zoom
Shooting distance	Wide: 0.3m~INF Tele:1m~INF
File format	Photo: JPEG Video: MP4
Video resolution	4K :3840*2160(30fps) 2.7K: 2688*1512 (60fps/30fps)

	<p>FHD 1080P : 1920*1080 (120fps/60fps/30fps)</p> <p>HD 720P : 1280*720 (120fps/60fps/30fps)</p>
Photo resolution	24MP/13MP/8MP
Storage media	External Micro SD/TF card (supports up to 256GB, U3, Class10 or above (Not included in the camera))
Microphone	Built-in
Speaker	Built-in
I/O interface	MIC/USB
Wi-Fi	Support
Hot Shoe	Support
Computer system compatible	Windows 7/8/10/11, Mac OSX10.5 or higher
Power input	DC5V/2A Type-C USB
Volume	Length 120MM X Width 83MM X Height 81MM
Weight	g (No lens cover , No Battery)
Storage environment temperature	-20~60℃
Working environment temperature	0~40℃

Fault problems and solutions

Fault performance	Possible reasons and solutions
Unable to power on	<ul style="list-style-type: none"> •The battery is not properly installed/the battery is dead, please install the battery correctly/charge the battery. •Is the operating environment temperature within the allowable range? Please use within 0-40 ℃.
The battery runs out quickly	<ul style="list-style-type: none"> •The battery performance will decrease at low temperatures. Please preheat before use. •The battery is not fully charged, please recharge it. •If the situation persists after recharging, it indicates that the battery has reached the end of its service life. Please purchase the product again. •Proper use of automatic shutdown or screen saver, screen brightness, and other functions can effectively save power consumption.
Poor focus	<ul style="list-style-type: none"> •Exceeding the focal length range, shooting within the autofocus range. •The ambient brightness is too low, please manually fill in the light. •The lens has foreign objects that are not clean. Please wipe the lens and reuse it.

Unable to use memory card/unable to record or take photos	<ul style="list-style-type: none"> •Card damage/TF card does not meet product read-write requirements, replace TF card/format TF card on this machine. •The storage card capacity is insufficient, please check the storage card. •The storage card format is incorrect. Please format it on your computer and try using it again.
The Wi-Fi signal is unstable	<ul style="list-style-type: none"> •If the distance is too far, please use within 3 meters. •The camera is placed on a metal table or shelf, causing wireless signal interference. Please use it in a location away from metal. •The Wi-Fi antenna signal of the mobile phone used is weak, please replace the phone.

Name and content of harmful substances in the product

Component Name	Harmful substances					
	Lead (Pb)	Mercury (Hg)	Cadmium (Cd)	Hexavalent chromium (Cr(VI))	Polybrominated biphenyls (PBB)	Polybrominated diphenyl ethers (PBDE)
Host shell and components	X	O	O	O	O	O
Internal electronic components of the host	X	O	O	O	O	O
Charger casing and components	O	O	O	O	O	O
Internal electronic components of charger	O	O	O	O	O	O

This table is prepared in accordance with the provisions of SJ/T 11364

O: The content of the hazardous substance in all homogeneous materials of the component is below the limit requirements specified in GB/T 26572.

X: The content of the hazardous substance in at least one homogeneous material of the component exceeds the limit requirements specified in GB/T26572, and there is no mature alternative solution in the industry. This product complies with the EU RoHS environmental directive requirements.



FCC Caution.

This device complies with part 15 of the FCC Rules. Operation is subject to the following two conditions: (1) This device may not cause harmful interference, and (2) this device must accept any interference received, including interference that may cause undesired operation. Any Changes or modifications not expressly approved by the party responsible for compliance could void the user's authority to operate the equipment. Note: This equipment has been tested and found to comply with the limits for a Class B digital device, pursuant to part 15 of the FCC Rules. These limits are designed to provide reasonable protection against harmful interference in a residential installation. This equipment generates uses and can radiate radio frequency energy and, if not installed and used in accordance with the instructions, may cause harmful interference to radio communications. However, there is no guarantee that interference will not occur in a particular installation. If this equipment does cause harmful interference to radio or television reception, which can be determined by turning the equipment off and on, the user is encouraged to try to correct the interference by one or more of the following measures: -Reorient or relocate the receiving antenna. -n crease the separation between the equipment and receiver. Connect the equipment into an outlet on a circuit different from that to which the receiver is connected. -Consult the dealer or an experienced radio/Ty technician for help. The device has been evaluated to meet general RF exposure requirement. The device can bemused in portable exposure condition without restriction.