

Antenna Test Report

Customer	zhong
Model Name	C5
Antenna Revision	V1.0
Antenna Type:	3216
Product Description	PCB
Product No	V.0
DATE	2024.3.28

Purpose

This report is to measure the performance of BT antenna for 263. The antenna operating frequency at 2.4~2.5GHz, All test data are showed as below.

Content

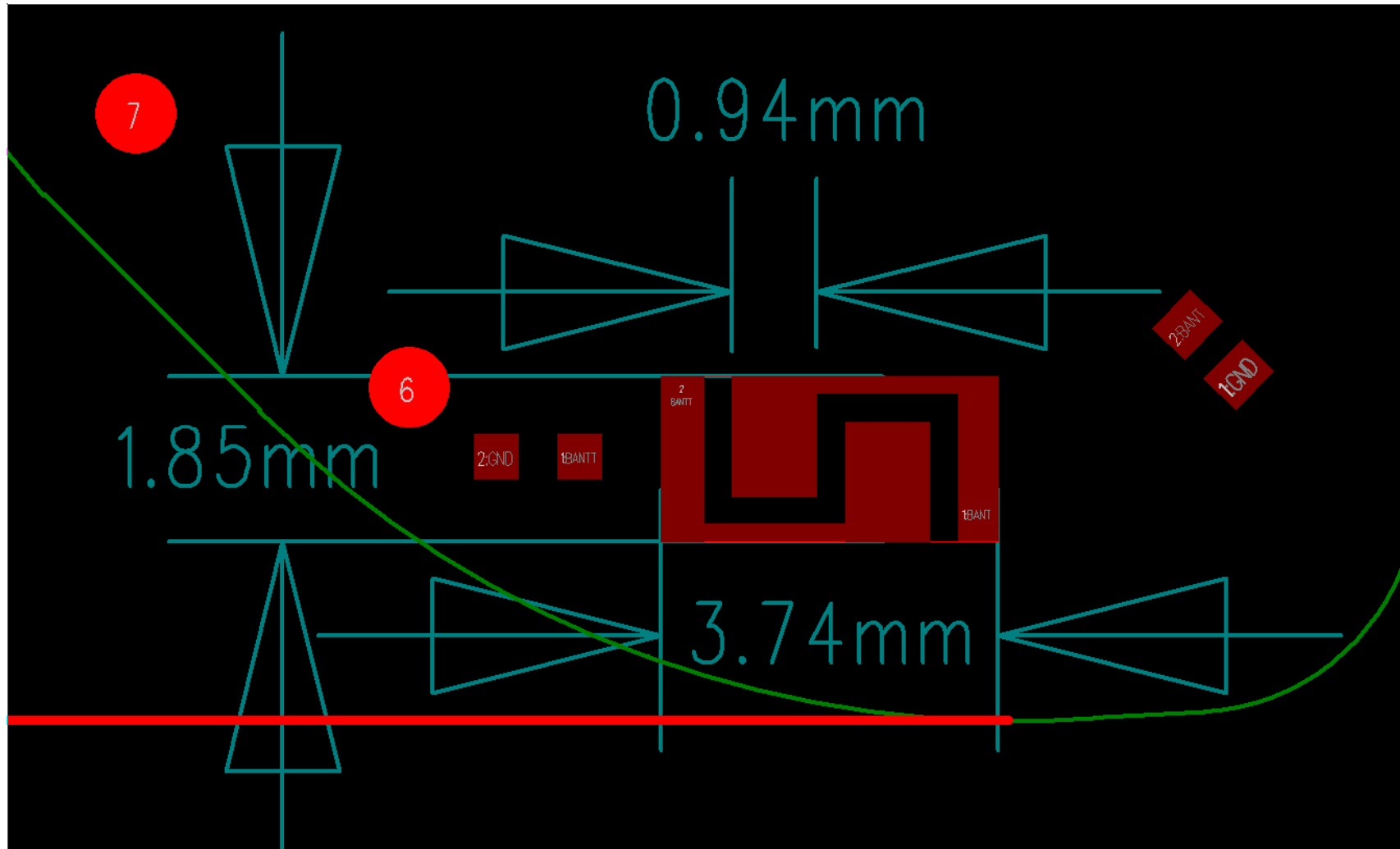
1. Product Overview & Dimension
2. Test system
3. Antenna Matching Network
4. Test Result
 - 4.1 S11 Parameter
 - 4.2 Test coordinate
 - 4.3 2D Pattern
 - 4.4 OTA Data
 - 4.5 BT Boot measured
5. Antenna Assembly & environmental processing

2. Test System

Sequence Number	Test Item	equipment
S parameter	VSWR	Agilent 5071C & Agilent 5062A
OTA Test	TRP&TIS	CMW500 & CMW270 ETS&SATIMO
Gain & Efficiency	Gain & Efficiency	ETS&SATIMO Agilent 5071C

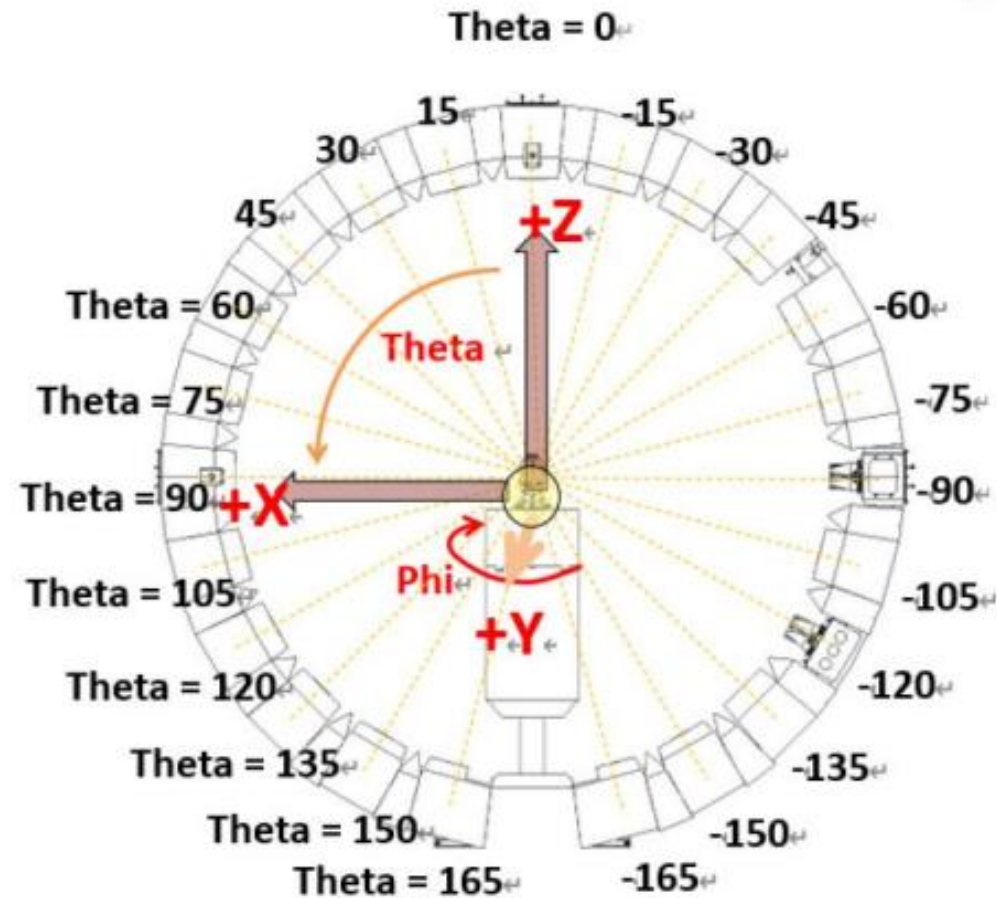


3. Antenna Size



Reg Add:5/F,Building 2,Hezhou Anle Industrial Park,Hezhou Community
,Hangcheng Street, Bao'an District,Shenzhen City

Sample status & coordinates



Reg Add:5/F,Building 2,Hezhou Anle Industrial Park,Hezhou Community
,Hangcheng Street, Bao'an District,Shenzhen City

Shenzhen Xinlianxin Electronics Co., Ltd

(L-R)



Reg Add:5/F, Building 2, Hezhou Anle Industrial Park, Hezhou Community
, Hangcheng Street, Bao'an District, Shenzhen City

无源S11—(BTANT)-



Test Result

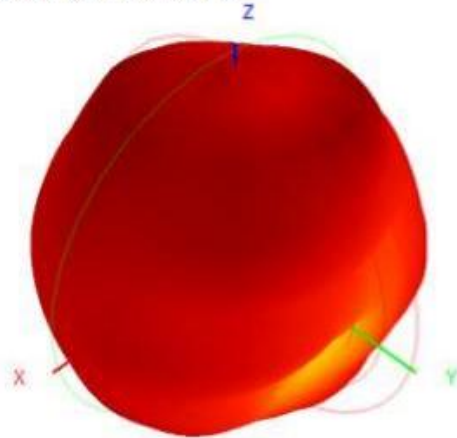
Gain & Efficiency—BT-ANT

Frequency (MHz)	Efficiency (%)	Peak GAIN (dBi)
2400	31.87	1.08
2410	34.61	0.88
2420	37.32	0.59
2430	41.67	0.38
2440	43.92	0.47
2450	45.37	1.26
2460	45.91	1.92
2470	44.45	1.11
2480	41.49	1.34
2490	39.18	1.78
2500	36.41	1.31

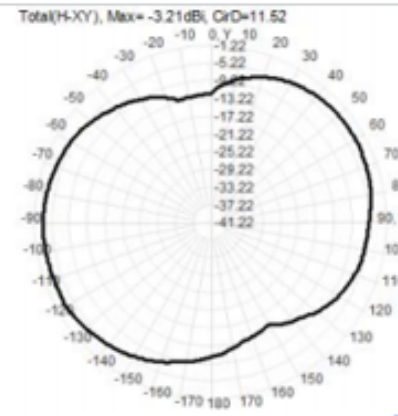
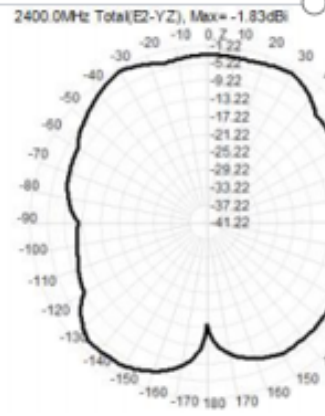
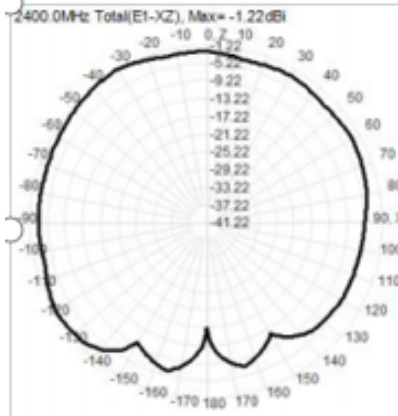
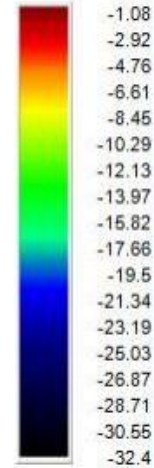
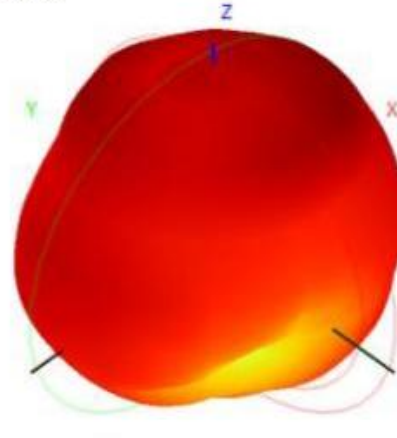
Test Result

2D&3D — BT-ANT

2400.0MHz H+V, Eff: 31.9%



Back View



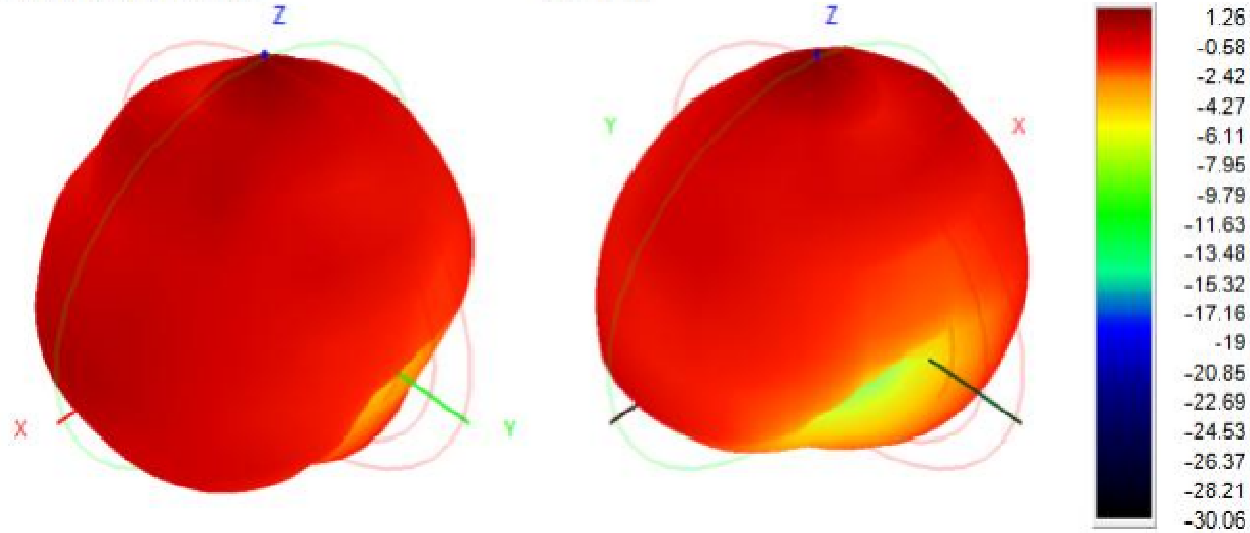
Reg Add:5/F,Building 2,Hezhou Anle Industrial Park,Hezhou Community
,Hangcheng Street, Bao'an District,Shenzhen City

Test Result

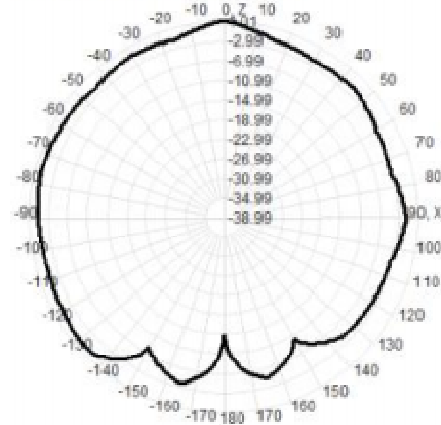
2D&3D — BT-ANT

2450.0MHz H+V, Eff: 45.4%

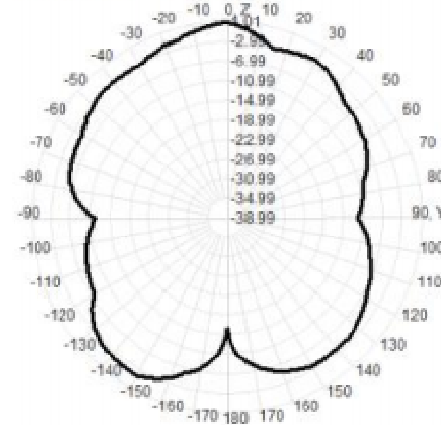
Back View



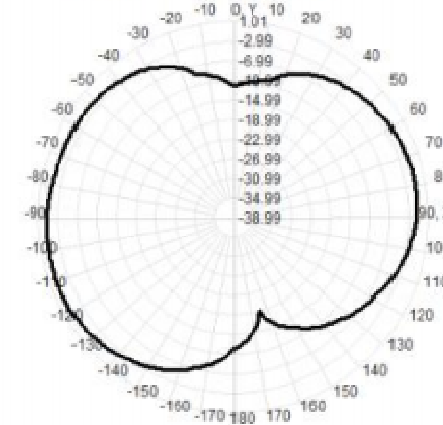
2450.0MHz Total(E1-XZ), Max= 1.01dBi



2450.0MHz Total(E2-YZ), Max= 0.76dBi



Total(HI-XY), Max= -0.55dBi CirD=18.83

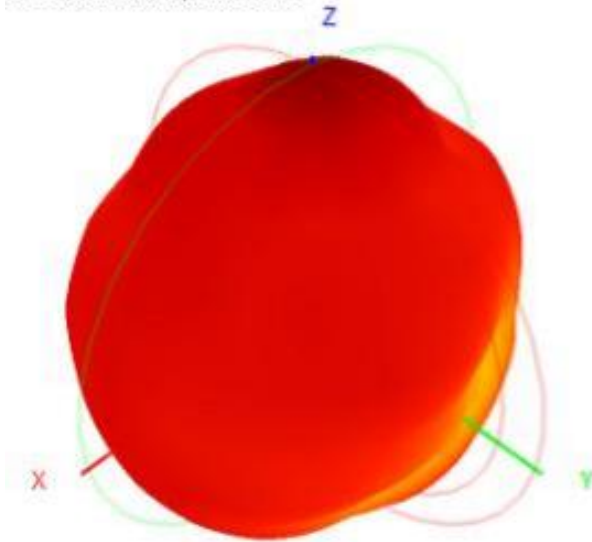


Reg Add:5/F, Building 2, Hezhou Anle Industrial Park, Hezhou Community
, Hangcheng Street, Bao'an District, Shenzhen City

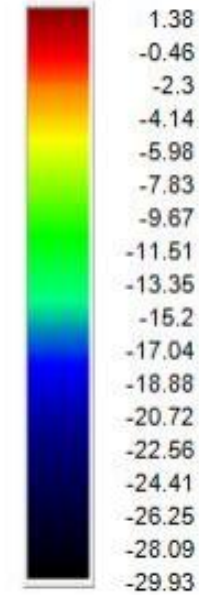
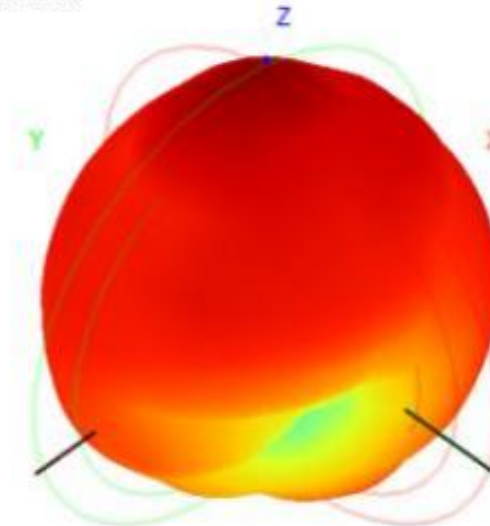
Test

2D&3

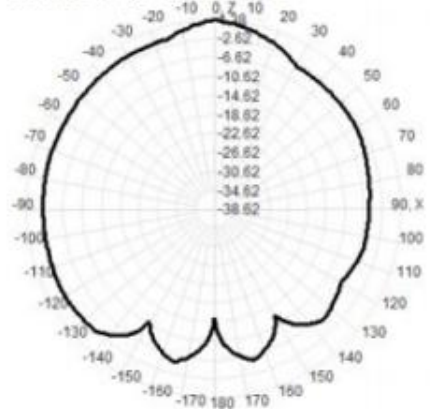
2500.0MHz H+V, Eff: 36.4%



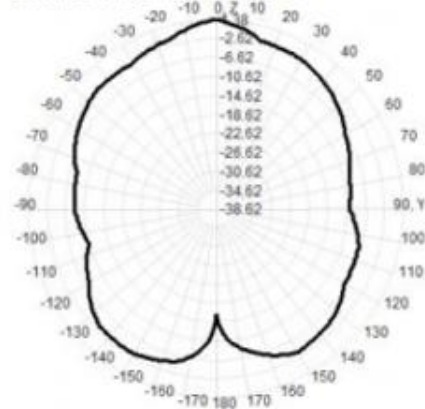
Back View



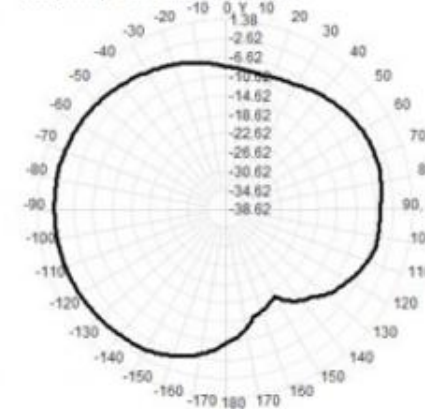
2500.0MHz Total(E1-XZ), Max= 1.31dBi



2500.0MHz Total(E2-YZ), Max= 1.38dBi



Total(H-XY), Max= -2.24dBi, CrD=15.13



Reg Add:5/F,Building 2,Hezhou Anle Industrial Park,Hezhou Community
,Hangcheng Street, Bao'an District,Shenzhen City