

System Performance Check-D2450V2

Frequency: 2450 MHz; Duty Cycle: 1:1; Room Ambient Temperature: 23.1°C; Liquid Temperature: 22.8°C
Medium parameters used: $f = 2450$ MHz; $\sigma = 1.815$ S/m; $\epsilon_r = 38.551$; $\rho = 1000$ kg/m³

DASY5 Configuration:

- Area Scan Setting: Find Secondary Maximum Within: 2.0 dB and with a peak SAR value greater than 0.0012W/kg
- Electronics: DAE4 Sn914; Calibrated: 2020/6/22
- Probe: EX3DV4 - SN3665; ConvF(7.35, 7.35, 7.35) @ 2450 MHz; Calibrated: 2020/8/20
- Sensor-Surface: 2mm (Mechanical Surface Detection)
- Phantom: ELI

Head/Pin=250mW/Area Scan (71x91x1): Interpolated grid: dx=1.200 mm, dy=1.200 mm
Maximum value of SAR (interpolated) = 21.5 W/kg

Head/Pin=250mW/Zoom Scan (7x7x7)/Cube 0: Measurement grid: dx=5mm, dy=5mm, dz=5mm

Reference Value = 108.8 V/m; Power Drift = -0.11 dB

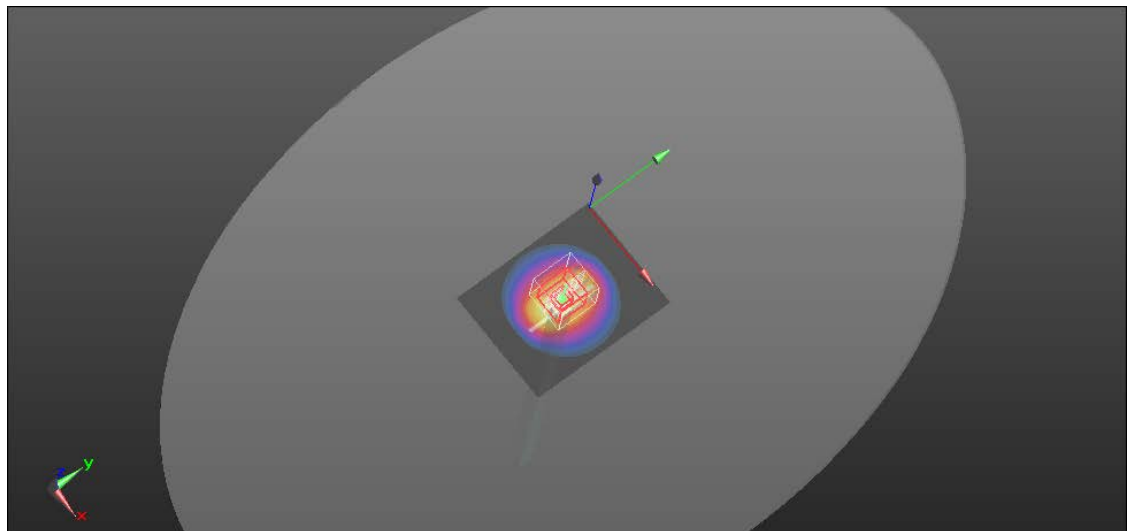
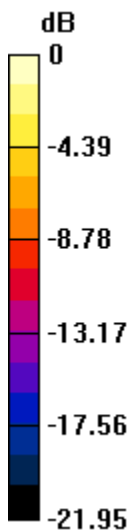
Peak SAR (extrapolated) = 27.2 W/kg

SAR(1 g) = 13.3 W/kg; SAR(10 g) = 6.2 W/kg

Smallest distance from peaks to all points 3 dB below = 9 mm

Ratio of SAR at M2 to SAR at M1 = 49.7%

Maximum value of SAR (measured) = 20.3 W/kg



0 dB = 20.3 W/kg = 13.07 dBW/kg

System Performance Check-D5300V2 SN1023

Frequency: 5300 MHz; Duty Cycle: 1:1; Room Ambient Temperature: 23.3°C; Liquid Temperature: 23.1°C
Medium parameters used: $f = 5300$ MHz; $\sigma = 4.937$ S/m; $\epsilon_r = 35.868$; $\rho = 1010$ kg/m³

DASY5 Configuration:

- Area Scan Setting: Find Secondary Maximum Within: 2.0 dB and with a peak SAR value greater than 0.0012W/kg
- Electronics: DAE4 Sn914; Calibrated: 2020/6/22
- Probe: EX3DV4 - SN3665; ConvF(5.25, 5.25, 5.25) @ 5300 MHz; Calibrated: 2020/8/20
- Sensor-Surface: 2mm (Mechanical Surface Detection)
- Phantom: ELI

Head/Pin=100mW/Area Scan (51x51x1): Interpolated grid: dx=1.000 mm, dy=1.000 mm

Maximum value of SAR (interpolated) = 17.9 W/kg

Head/Pin=100mW/Zoom Scan (7x7x12)/Cube 0: Measurement grid: dx=4mm, dy=4mm, dz=2mm

Reference Value = 63.94 V/m; Power Drift = 0.02 dB

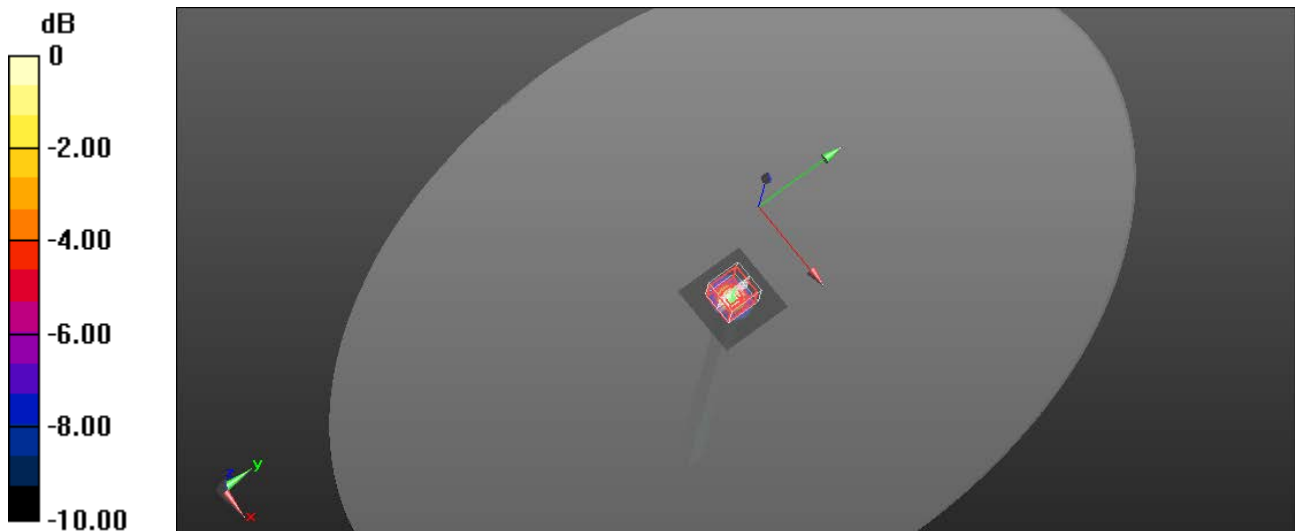
Peak SAR (extrapolated) = 34.0 W/kg

SAR(1 g) = 8.55 W/kg; SAR(10 g) = 2.47 W/kg

Smallest distance from peaks to all points 3 dB below = 7.2 mm

Ratio of SAR at M2 to SAR at M1 = 55.6%

Maximum value of SAR (measured) = 17.7 W/kg



0 dB = 17.7 W/kg = 12.48 dBW/kg

System Performance Check-D5600V2 SN1023

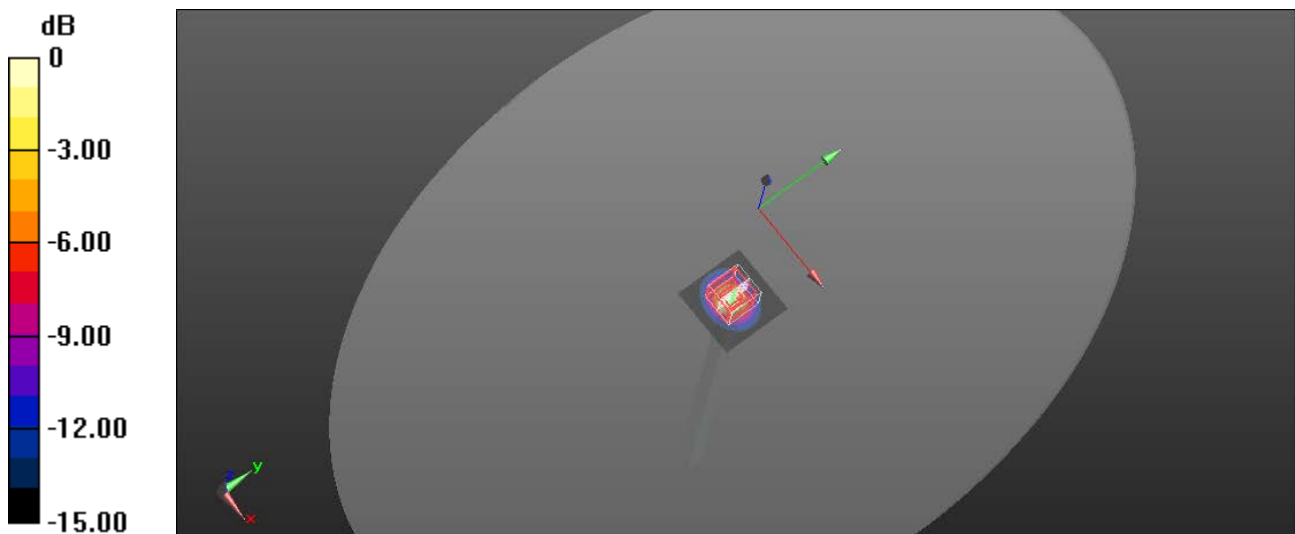
Frequency: 5600 MHz; Duty Cycle: 1:1; Room Ambient Temperature: 23.3°C; Liquid Temperature: 23.0°C
Medium parameters used: $f = 5600$ MHz; $\sigma = 5.175$ S/m; $\epsilon_r = 35.167$; $\rho = 1010$ kg/m³

DASY5 Configuration:

- Area Scan Setting: Find Secondary Maximum Within: 2.0 dB and with a peak SAR value greater than 0.0012W/kg
- Electronics: DAE4 Sn914; Calibrated: 2020/6/22
- Probe: EX3DV4 - SN3665; ConvF(4.95, 4.95, 4.95) @ 5600 MHz; Calibrated: 2020/8/20
- Sensor-Surface: 2mm (Mechanical Surface Detection)
- Phantom: ELI

Head/Pin=100mW/Area Scan (51x51x1): Interpolated grid: dx=1.000 mm, dy=1.000 mm
Maximum value of SAR (interpolated) = 18.2 W/kg

Head/Pin=100mW/Zoom Scan (7x7x12)/Cube 0: Measurement grid: dx=4mm, dy=4mm, dz=2mm
Reference Value = 62.27 V/m; Power Drift = 0.03 dB
Peak SAR (extrapolated) = 36.0 W/kg
SAR(1 g) = 8.48 W/kg; SAR(10 g) = 2.42 W/kg
Smallest distance from peaks to all points 3 dB below = 7.4 mm
Ratio of SAR at M2 to SAR at M1 = 53.2%
Maximum value of SAR (measured) = 17.7 W/kg



0 dB = 17.7 W/kg = 12.48 dBW/kg

System Performance Check-D5800V2 SN1023

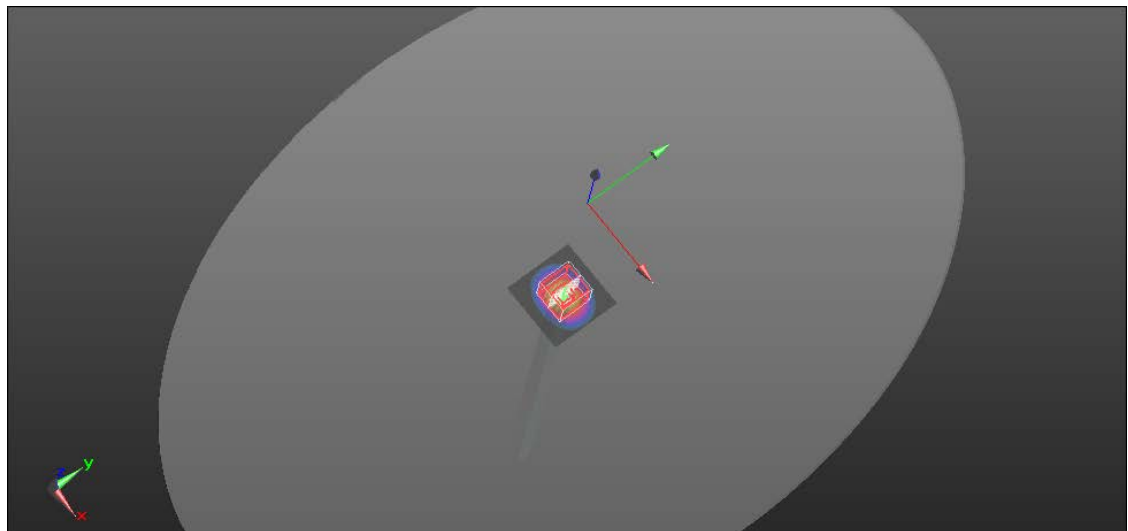
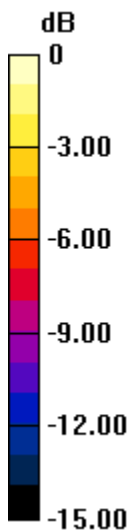
Frequency: 5800 MHz; Duty Cycle: 1:1; Room Ambient Temperature: 23.2°C; Liquid Temperature: 22.9°C
Medium parameters used: $f = 5800 \text{ MHz}$; $\sigma = 5.398 \text{ S/m}$; $\epsilon_r = 34.7$; $\rho = 1000 \text{ kg/m}^3$

DASY5 Configuration:

- Area Scan Setting: Find Secondary Maximum Within: 2.0 dB and with a peak SAR value greater than 0.0012W/kg
- Electronics: DAE4 Sn914; Calibrated: 2020/6/22
- Probe: EX3DV4 - SN3665; ConvF(4.97, 4.97, 4.97) @ 5800 MHz; Calibrated: 2020/8/20
- Sensor-Surface: 2mm (Mechanical Surface Detection)
- Phantom: ELI

Head/Pin=100mW/Area Scan (51x51x1): Interpolated grid: $dx=1.000 \text{ mm}$, $dy=1.000 \text{ mm}$
Maximum value of SAR (interpolated) = 18.6 W/kg

Head/Pin=100mW/Zoom Scan (7x7x12)/Cube 0: Measurement grid: $dx=4\text{mm}$, $dy=4\text{mm}$, $dz=2\text{mm}$
Reference Value = 62.13 V/m; Power Drift = -0.14 dB
Peak SAR (extrapolated) = 38.7 W/kg
SAR(1 g) = 8.37 W/kg; SAR(10 g) = 2.38 W/kg
Smallest distance from peaks to all points 3 dB below = 7.5 mm
Ratio of SAR at M2 to SAR at M1 = 49.6%
Maximum value of SAR (measured) = 17.9 W/kg



0 dB = 17.9 W/kg = 12.53 dBW/kg