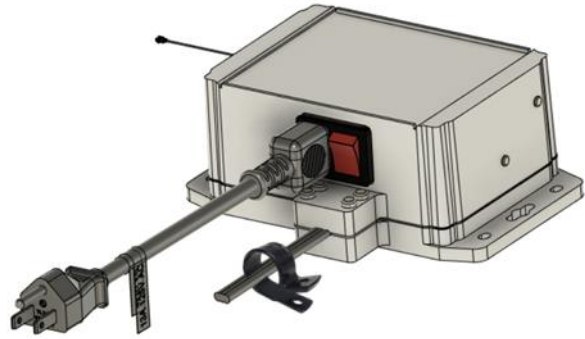


Wireless Relay

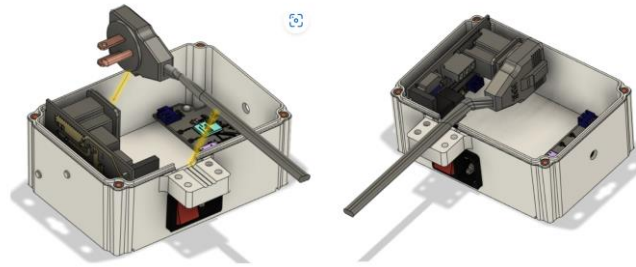
INSTALLATION MANUAL



Preface

Please read this manual before installing. Any questions, please contact our customer service.

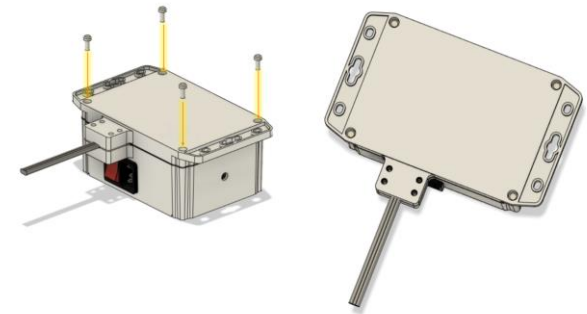
1. Plug appliance into Wireless Relay AC inlet



2. Fit appliance cable inside a grommet



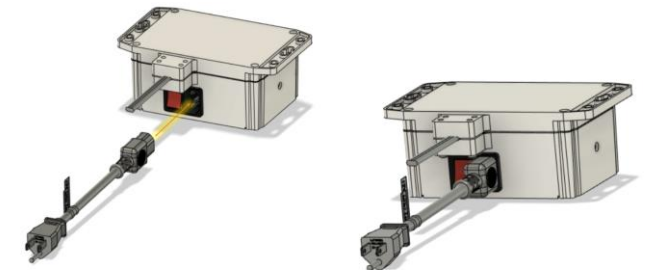
3. Secure the top & bottom cover together



4. Secure Appliance clip

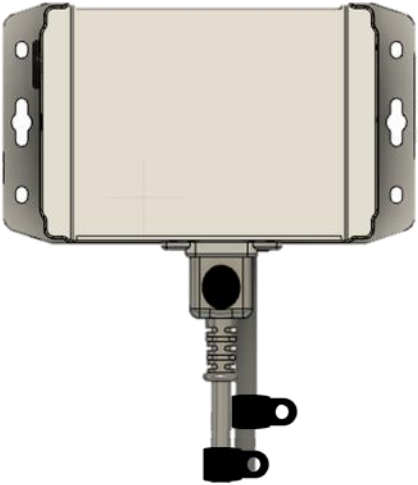


5. Insert AC Input Cable Assembly



6. Attach Wireless Relay onto REAR PANEL of appliance [Figure A]

7. Test Wireless connection - See Test Application Manual



IMPORTANT: DEVICE PLACEMENT

- 1) Place device as far as possible from water inlets
- 2) Place device as close to the top of the appliance as possible (above water inlets where possible).
- 3) Place with AC power facing the floor to avoid hazardous conditions (water exposure from top)

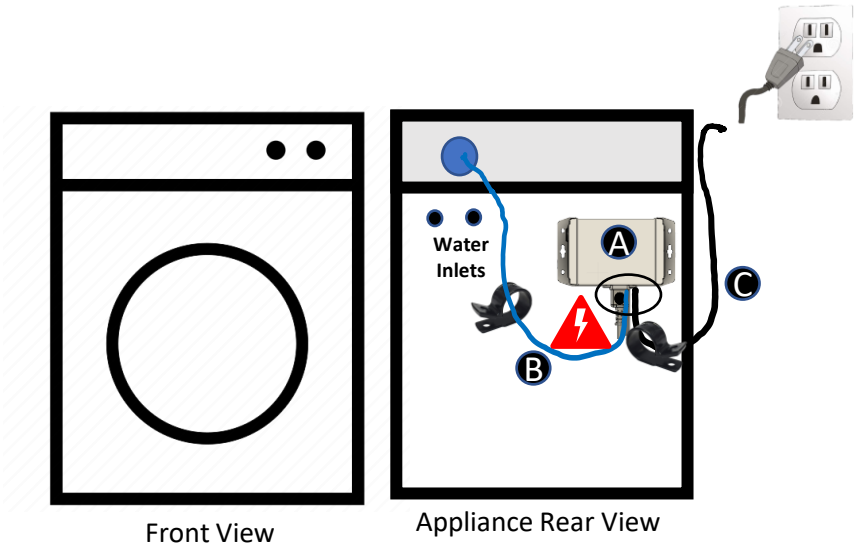
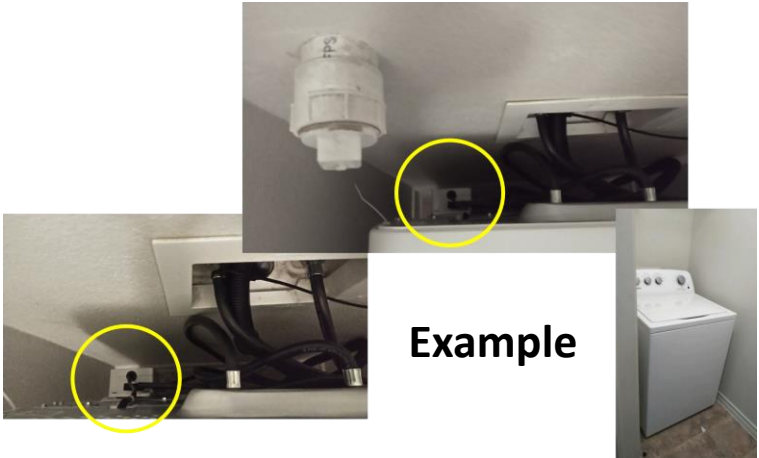


Figure A



This Manufacturer advises that all unsecured AC chords be secured against accidental pull by clamping down (A) and (B) to the REAR PANEL of the appliance.



Technical Specifications

Electrical Rating Maximum Load

Input: 120-240VAC, 15A , 50-60Hz

Output: 120-240VAC, 15A , 50-60Hz

Operating Temperature

4°F to 120°F (-20°C-50°C)

Waterproof Rating

IP64

Relay Rating

100K open/close events

This device complies with part 15 of the FCC Rules. Operation is subject to the following two conditions: (1) This device may not cause harmful interference, and (2) this device must accept any interference received, including interference that may cause undesired operation.

This Device has been tested and found to comply with the limits for a Class B digital device, pursuant to part 15 of the FCC Rules. These limits are designed to provide reasonable protection against harmful interference in a residential installation. This Device generates, uses and can radiate radio frequency energy and, if not installed and used in accordance with the instructions, may cause harmful interference to radio communications. However, there is no guarantee that interference will not occur in a particular installation. If this equipment does cause harmful interference to radio or television reception, which can be determined by turning the equipment off and on, the user is encouraged to try to correct the interference by one or more of the following measures:—Reorient or relocate the receiving antenna. —Increase the separation between the equipment and receiver. —Connect the equipment into an outlet on a circuit different from that to which the receiver is connected. —Consult the dealer or an experienced radio/TV technician for help.

Warning: Any changes or modification not expressly approved by the party responsible for compliance could void the user's authority to operate the Device.

RF Exposure Information

This equipment complies with FCC radiation exposure limits set forth for an uncontrolled environment. This equipment should be installed and operated with minimum distance 20cm between the radiator and your body.