

FCC SAR REPORT

Report No.: JYTSZ-R14-2500021

Applicant: Shenzhen DOOGEE Hengtong Technology CO.,LTD

Address of Applicant: B, 2/F, Building A4, Silicon Valley Power Digital Industrial Park, No. 22, Dafu Industrial Zone, Guanlan Aobei Community, Guanlan Street, Longhua New District, Shenzhen, Guangdong China

Equipment Under Test (EUT)

Product Name: Smart Phone

Model No.: V Max S, V Max Plus, V Max Pro , V Max Ultra, V Max GT, V Max GT Ultra, V Max GT Pro, V Max SE, V Max Power, V Max Turbo, V Max 2, V Max Play, V Max Pro+

Trade mark DOOGEE

FCC ID: 2AX4YVMAXS

Applicable standards: FCC 47 CFR Part 2.1093

Date of Test: 18 Feb., 2025 ~ 06 Mar., 2025

Test Result: Maximum Reported 1-g SAR (W/kg)
Head: 0.720 Body: 0.724 Hotspot: 1.381

Project by: _____ **Date:** 22 Apr., 2025

Reviewed by: _____ **Date:** 22 Apr., 2025

Approved by: _____ **Date:** 22 Apr., 2025

Manager

This equipment has been shown to be capable of compliance with the applicable technical standards as indicated in the measurement report and was tested in accordance with the measurement procedures specified in above the application standard version. Test results reported herein relate only to the item(s) tested.

This document cannot be reproduced except in full, without prior written approval of the Company. Any unauthorized alteration, forgery or falsification of the content or appearance of this document is unlawful and offenders may be prosecuted to the fullest extent of the law. Unless otherwise stated the results shown in this test report refer only to the sample(s) tested and such sample(s) are retained for 90 days only.

2 Version

Version No.	Date	Description
00	22 Apr., 2025	Original

3 Contents

1	COVER PAGE	1
2	VERSION	2
3	CONTENTS	3
4	SAR RESULTS SUMMARY	5
5	GENERAL INFORMATION	7
5.1	CLIENT INFORMATION.....	7
5.2	GENERAL DESCRIPTION OF EUT	7
5.3	MAXIMUM RF OUTPUT POWER	9
5.4	ENVIRONMENT OF TEST SITE	10
5.5	TEST SAMPLE PLAN	10
5.6	LABORATORY FACILITY.....	10
5.7	TEST LOCATION	10
6	INTRODUCTION	11
6.1	INTRODUCTION	11
6.2	SAR DEFINITION.....	11
7	RF EXPOSURE LIMITS	12
7.1	UNCONTROLLED ENVIRONMENT.....	12
7.2	CONTROLLED ENVIRONMENT	12
7.3	RF EXPOSURE LIMITS.....	12
8	SAR MEASUREMENT SYSTEM	13
8.1	E-FIELD PROBE.....	14
8.2	DATA ACQUISITION ELECTRONICS (DAE).....	14
8.3	ROBOT	15
8.4	MEASUREMENT SERVER	15
8.5	LIGHT BEAM UNIT.....	15
8.6	PHANTOM.....	16
8.7	DEVICE HOLDER.....	17
8.8	DATA STORAGE AND EVALUATION	18
8.9	TEST EQUIPMENT LIST	20
9	TISSUE SIMULATING LIQUIDS	21
10	SAR SYSTEM VERIFICATION	23
11	EUT TESTING POSITION	25
11.1	HANDSET REFERENCE POINTS	25
11.2	POSITIONING FOR CHEEK / TOUCH	26
11.3	POSITIONING FOR EAR / 150 TILT.....	26
11.4	SAR EVALUATIONS NEAR THE MOUTH/JAW REGIONS OF THE SAM PHANTOM	27
11.5	BODY WORN ACCESSORY CONFIGURATIONS.....	27
11.6	WIRELESS ROUTER (HOTSPOT) CONFIGURATIONS	28
12	MEASUREMENT PROCEDURES	29
12.1	SPATIAL PEAK SAR EVALUATION	29
12.2	POWER REFERENCE MEASUREMENT.....	30
12.3	AREA & ZOOM SCAN PROCEDURES.....	30
12.4	VOLUME SCAN PROCEDURES	31
12.5	SAR AVERAGED METHODS	31
12.6	POWER DRIFT MONITORING	31
13	CONDUCTED RF OUTPUT POWER	32
13.1	GSM CONDUCTED POWER	32
13.2	WCDMA CONDUCTED POWER	34
13.3	LTE CONDUCTED POWER	37
13.4	WLAN 2.4 GHz BAND CONDUCTED POWER	67
13.5	WLAN 5.2GHz BAND CONDUCTED POWER	68
13.6	WLAN 5.8GHz BAND CONDUCTED POWER.....	69
13.7	BLUETOOTH CONDUCTED POWER	70
13.8	NFC CONDUCTED POWER	70
14	EXPOSURE POSITIONS CONSIDERATION	71

14.1	EUT ANTENNA LOCATIONS.....	71
14.2	TEST POSITIONS CONSIDERATION	72
15	SAR TEST RESULTS SUMMARY	73
15.1	STANDALONE HEAD SAR DATA.....	73
15.2	STANDALONE BODY SAR	78
15.3	BODY SAR IN HOTSPOT MODE	82
15.4	PRODUCT SPECIFIC 10G SAR	87
15.5	REPEATED SAR MEASUREMENT	87
15.6	MULTI-BAND SIMULTANEOUS TRANSMISSION CONSIDERATIONS.....	88
15.7	SAR SIMULTANEOUS TRANSMISSION ANALYSIS.....	89
15.8	MEASUREMENT UNCERTAINTY	90
15.9	MEASUREMENT CONCLUSION	91
16	REFERENCE.....	92
APPENDIX A: PLOTS OF SAR SYSTEM CHECK		93
APPENDIX B: PLOTS OF SAR TEST DATA		102

4 SAR Results Summary

The maximum results of Specific Absorption Rate (SAR) found during test as below:
 <Highest Reported standalone SAR Summary>

Exposure Position	Frequency Band	Reported 1-g SAR (W/kg)	Equipment Class	Highest Reported 1-g SAR (W/kg)
Head	GSM 850	0.141	PCE	0.720
	PCS 1900	0.157		
	WCDMA Band II	0.347		
	WCDMA Band IV	0.149		
	WCDMA Band V	0.235		
	LTE Band 7	0.061		
	LTE Band 12 & LTE Band 17	0.125		
	LTE Band 25 & LTE Band 2	0.336		
	LTE Band 26 & LTE Band 5	0.182		
	LTE Band 41 & LTE Band 38	0.066		
	LTE Band 66 & LTE Band 4	0.184		
	WLAN 2.4 GHz	0.720	DTS	
	Bluetooth	0.029	DSS	
	WLAN 5.2 GHz	0.185	NII	
WLAN 5.8 GHz	0.325			
Body (10 mm Gap)	GSM 850	0.724	PCE	0.724
	PCS 1900	0.628		
	WCDMA Band II	0.724		
	WCDMA Band IV	0.470		
	WCDMA Band V	0.367		
	LTE Band 7	0.465		
	LTE Band 12 & LTE Band 17	0.280		
	LTE Band 25 & LTE Band 2	0.587		
	LTE Band 26 & LTE Band 5	0.421		
	LTE Band 41 & LTE Band 38	0.433		
	LTE Band 66 & LTE Band 4	0.395		
	WLAN 2.4 GHz	0.203	DTS	
	Bluetooth	0.001	DSS	
	WLAN 5.2 GHz	0.390	NII	
WLAN 5.8 GHz	0.268			
Hotspot (10 mm Gap)	GSM 850	0.724	PCE	1.381
	PCS 1900	0.628		
	WCDMA Band II	0.724		
	WCDMA Band IV	0.470		
	WCDMA Band V	0.367		
	LTE Band 7	1.320		
	LTE Band 12 & LTE Band 17	0.280		
	LTE Band 25 & LTE Band 2	0.587		
	LTE Band 26 &	0.421		

	LTE Band 5				
	LTE Band 41 & LTE Band 38	1.381			
	LTE Band 66 & LTE Band 4	0.395			
	WLAN 2.4 GHz	0.354			DTS
	Bluetooth	0.007			DSS
	WLAN 5.2 GHz	0.486			NII
	WLAN 5.8 GHz	0.553			

Highest Reported Product Specific 10g SAR Summary>

Exposure Position	Frequency Band	Reported 10-g SAR (W/kg)	Equipment Class	Highest Reported 10-g SAR (W/kg)
Extremity (0 mm Gap)	LTE Band 41	1.514	PCE	1.514
	LTE Band 7	1.320	PCE	

<Highest Reported simultaneous SAR Summary>

Exposure Position	Frequency Band	Reported 1-g SAR (W/kg)	Equipment Class	Highest Reported Simultaneous Transmission 1-g SAR (W/kg)
Back	WWAN	0.724	PCE	1.450
	5G WLAN MIMO	0.726	NII	
	NFC	0.000	DXX	

Note:

1. The highest simultaneous transmission is scalar summation of Reported standalone SAR per FCC KDB 690783 D01 v01r03, and scalar SAR summation of all possible simultaneous transmission scenarios are < 1.6W/kg.
2. This device is compliance with Specific Absorption Rate (SAR) for general population/uncontrolled exposure limits (1.6 W/kg) specified in FCC 47 CFR part 2 (2.1093) and ANSI/IEEE C95.1-2005, and had been tested in accordance with the measurement methods and procedures specified in IEC/IEEE 62209-1528:2020.
3. For FDD-LTE Band 17 is full covered by FDD-LTE Band 12, so only FDD-LTE Band 12 was tested.
4. For FDD-LTE Band 2 is full covered by FDD-LTE Band 25, so only FDD-LTE Band 25 was tested.
5. For FDD-LTE Band 5 is full covered by FDD-LTE Band 26, so only FDD-LTE Band 26 was tested.
6. For FDD-LTE Band 4 is full covered by FDD-LTE Band 66, so only FDD-LTE Band 66 was tested.
7. For TDD-LTE Band 38 is full covered by TDD-LTE Band 41, so only TDD-LTE Band 41 was tested.

5 General Information

5.1 Client Information

Applicant:	Shenzhen DOOGEE Hengtong Technology CO.,LTD
Address of Applicant:	B, 2/F, Building A4, Silicon Valley Power Digital Industrial Park, No. 22, Dafu Industrial Zone, Guanlan Aobei Community, Guanlan Street, Longhua New District, Shenzhen, Guangdong China
Manufacturer:	Shenzhen DOOGEE Hengtong Technology CO.,LTD
Address of Manufacturer:	B, 2/F, Building A4, Silicon Valley Power Digital Industrial Park, No. 22, Dafu Industrial Zone, Guanlan Aobei Community, Guanlan Street, Longhua New District, Shenzhen, Guangdong China
Factory:	Shenzhen DOOGEE Hengtong Technology CO.,LTD
Address of Factory:	B, 2/F, Building A4, Silicon Valley Power Digital Industrial Park, No. 22, Dafu Industrial Zone, Guanlan Aobei Community, Guanlan Street, Longhua New District, Shenzhen, Guangdong China

5.2 General Description of EUT

Product Name:	Smart Phone		
Model No.:	V Max S, V Max Plus, V Max Pro, V Max Ultra, V Max GT, V Max GT Ultra, V Max GT Pro, V Max SE, V Max Power, V Max Turbo, V Max 2, V Max Play, V Max Pro+		
Category of device	Portable device		
Operation Frequency:	GSM:	GSM850: 824.2~848.8 MHz	PCS 1900: 1850.2~1909.8 MHz
	WCDMA:	Band II: 1852.4~1907.6 MHz	Band V: 826.4~846.6 MHz
		Band IV: 1712.4~1752.6 MHz	
	LTE?:	Band 2:1850MHz~1910MHz	Band 4:1710MHz~1755MHz
		Band 5:824MHz~849MHz	Band 7: 2500MHz~2570MHz
		Band 12: 699MHz~716MHz	Band 17: 704MHz~716MHz
		Band 20: 832MHz~862MHz	Band 25 : 1850MHz-1915MHz
		Band 26:814MHz~849MHz	Band 38: 2570MHz~2620MHz
	Wi-Fi:	2412MHz~2462MHz	5150MHz-5250MHz
		5725MHz-5850MHz	
Bluetooth: 2402 MHz ~ 2480 MHz			
NFC:13.56MHz			
Modulation technology:	GSM:	<input checked="" type="checkbox"/> Voice(GMSK) <input checked="" type="checkbox"/> GPRS(GMSK) <input checked="" type="checkbox"/> EGPRS(GMSK, 8PSK)	
	WCDMA:	<input checked="" type="checkbox"/> RMC(QPSK) <input checked="" type="checkbox"/> HSUPA(QPSK) <input checked="" type="checkbox"/> HSDPA(QPSK, 16QAM)	
	LTE:	<input checked="" type="checkbox"/> QPSK <input checked="" type="checkbox"/> 16QAM <input checked="" type="checkbox"/> 64QAM	
	Wi-Fi:	<input checked="" type="checkbox"/> 802.11b(DSSS) <input checked="" type="checkbox"/> 802.11a/g/n/ac (OFDM)	
	Bluetooth:	<input checked="" type="checkbox"/> BDR(GFSK) <input checked="" type="checkbox"/> EDR(π /4-DQPSK, 8DPSK) <input checked="" type="checkbox"/> LE(GFSK)	
	NFC:	<input checked="" type="checkbox"/> ASK	
Antenna Type:	Internal Antenna		
Antenna Gain:	GSM 850:	-0.14 dBi	PCS 1900: 2.25 dBi
	WCDMA Band II:	2.25 dBi	WCDMA Band V -3.64 dBi
	WCDMA Band IV:	1.83 dBi	

	LTE Band 2:	2.25 dBi	LTE Band 4	1.83 dBi
	LTE Band 5:	-0.14 dBi	LTE Band 7:	2.25 dBi
	LTE Band 12:	0.13 dBi	LTE Band 17:	0.13 dBi
	LTE Band 25:	2.25 dBi	LTE Band 26:	-0.14 dBi
	LTE Band 38:	2.25 dBi	LTE Band 41:	2.25 dBi
	LTE Band 66:	1.83 dBi		
	ANT7:			
	Bluetooth:	-1.54 dBi	2.4G Wi-Fi:	-1.55 dBi
	5G Wi-Fi:	2.24 dBi		
	ANT6:			
	2.4G Wi-Fi:	0.11 dBi	5G Wi-Fi:	2.33 dBi
(E)GPRS Class:	(E)GPRS Class: 12			
Dimensions (L*W*H):	179 mm (L)× 84 mm (W)× 27 mm (H)			
Accessories information:	Model: TP303C-US Input: AC100-220V, 50/60Hz, 0.7A Max Output: USB-C: DC 5.0V, 3.0A 15W; 9.0V, 3.0A 27W; 12.0V, 2.5A 30W; 15.0V, 2.0A 30W; 20V, 1.5A 30W PPS : DC 5.0V-11V, 3.0A 33W		Battery: Rechargeable Li-ion Battery DC3.87V, 22000mAh	
			Headset: Support headset (shipped without)	
Remark:	Model No.: V Max S, V Max Plus, V Max Pro, V Max Ultra, V Max GT, V Max GT Ultra, V Max GT Pro, V Max SE, V Max Power, V Max Turbo, V Max 2, V Max Play, V Max Pro+ were identical inside, the electrical circuit design, layout, components used and internal wiring, with only difference being model name.			

5.3 Maximum RF Output Power

Mode	Average Power (dBm)	
	GSM 850	PCS 1900
GSM (Voice)	32.80	30.12
GPRS (1 TX Slot)	32.89	30.11
GPRS (2 TX Slots)	32.34	29.40
GPRS (3 TX Slots)	30.52	27.65
GPRS (4 TX Slots)	29.46	26.60
EGPRS (1 TX Slot)	26.67	25.22
EGPRS (2 TX Slots)	25.29	24.01
EGPRS (3 TX Slots)	23.03	21.73
EGPRS (4 TX Slots)	21.48	20.37

Mode	Average Power (dBm)		
	WCDMA Band II	WCDMA Band IV	WCDMA Band V
AMR 12.2 kbps	24.09	23.50	23.96
RMC 12.2 kbps	24.13	23.53	23.91
HSDPA Sub-test 1	23.11	22.53	22.94
HSDPA Sub-test 2	22.57	22.04	22.44
HSDPA Sub-test 3	22.63	22.08	22.49
HSDPA Sub-test 4	22.64	22.03	22.45
HSUPA Sub-test 1	21.08	20.51	20.75
HSUPA Sub-test 2	21.57	21.01	21.29
HSUPA Sub-test 3	22.10	21.53	21.80
HSUPA Sub-test 4	21.10	20.51	20.78
HSUPA Sub-test 5	23.10	22.54	22.60

Mode	Average Power (dBm)					
	LTE Band 7	LTE Band 12	LTE Band 25	LTE Band 26	LTE Band 41	LTE Band 66
BW/1.4 MHz	/	23.82	23.62	23.77	/	23.76
BW/3.0 MHz	/	23.74	23.58	23.89	/	23.73
BW/5.0 MHz	24.38	23.90	23.78	23.98	24.45	23.95
BW/10 MHz	24.09	23.79	23.64	23.92	24.39	23.83
BW/15 MHz	24.10	/	23.67	23.96	24.37	23.83
BW/20 MHz	24.00	/	23.82	/	24.34	23.88

ANT7:

WLAN 2.4 GHz Band Average Power (dBm)				
Mode/Band	b	g	n (HT-20)	n (HT-40)
WLAN 2.4GHz	16.93	15.19	11.96	12.34

WLAN 5.2 GHz Band Average Power (dBm)									
Mode/Band	a	ac 20	ac 40	ac 80	n 20	n 40	ax 20	ax 40	ax 80
WLAN 5.2GHz	13.16	8.18	8.23	7.47	8.91	8.40	8.22	8.34	7.74

WLAN 5.8 GHz Band Average Power (dBm)									
Mode/Band	a	ac 20	ac 40	ac 80	n 20	n 40	ax 20	ax 40	ax 80
WLAN 5.8GHz	13.80	8.05	8.27	7.03	8.10	7.81	8.15	8.00	7.52

ANT6:

WLAN 2.4 GHz Band Average Power (dBm)				
Mode/Band	b	g	n (HT-20)	n (HT-40)
WLAN 2.4GHz	17.64	16.10	12.71	12.74

WLAN 5.2 GHz Band Average Power (dBm)									
Mode/Band	a	ac 20	ac 40	ac 80	n 20	n 40	ax 20	ax 40	ax 80
WLAN 5.2GHz	14.43	10.22	10.31	9.44	10.92	10.40	10.43	10.59	9.65

WLAN 5.8 GHz Band Average Power (dBm)									
Mode/Band	a	ac 20	ac 40	ac 80	n 20	n 40	ax 20	ax 40	ax 80
WLAN 5.8GHz	14.93	11.23	10.89	10.01	11.30	10.53	11.47	10.78	10.49

Bluetooth Average Power (dBm)							
Mode/Band	1 Mbps (GFSK)	2 Mbps (π/4DQPSK)	3 Mbps (8DPSK)	BLE PHY 1M	BLE PHY 2M	BLE Coded PHY S=2	BLE Coded PHY S=8
Bluetooth	5.57	5.18	5.49	5.93	5.30	5.82	5.92

NFC Band Average Power (dBm)	
Mode/Band	ASK
NFC	-73.59

5.4 Environment of Test Site

Temperature:	18°C ~25 °C
Humidity:	35%~75% RH
Atmospheric Pressure:	1010 mbar

5.5 Test Sample Plan

Sample Number	Used for Test Items
SZR012500050-3	SAR

Remark: JianYan Testing Group Shenzhen Co., Ltd. is only responsible for the test project data of the above samples, and will keep the above samples for a month.

5.6 Laboratory Facility

<p>The test facility is recognized, certified, or accredited by the following organizations:</p> <ul style="list-style-type: none"> ● FCC - Designation No.: CN1211 JianYan Testing Group Shenzhen Co., Ltd. has been accredited as a testing laboratory by FCC(Federal Communications Commission). The test firm Registration No. is 727551. ● ISED – CAB identifier.: CN0021 The 3m Semi-anechoic chamber and 10m Semi-anechoic chamber of JianYan Testing Group Shenzhen Co., Ltd. has been Registered by Certification and Engineering Bureau of Industry Canada for radio equipment testing with Registration No.: 10106A-1. ● CNAS - Registration No.: CNAS L15527 JianYan Testing Group Shenzhen Co., Ltd. is accredited to ISO/IEC 17025:2017 General Requirements for the Competence of Testing and Calibration laboratories for the competence of testing. The Registration No. is CNAS L15527. ● A2LA - Registration No.: 4346.01 This laboratory is accredited in accordance with the recognized International Standard ISO/IEC 17025:2017 General requirements for the competence of testing and calibration laboratories. The test scope can be found as below link: https://portal.a2la.org/scopepdf/4346-01.pdf
--

5.7 Test Location

<p>JianYan Testing Group Shenzhen Co., Ltd. No.101, Building 8, Innovation Wisdom Port, No.155 Hongtian Road, Huangpu Community,Xinqiao Street, Bao'an District, Shenzhen, Guangdong,People's Republic of China. Tel: +86-755-23118282, Fax: +86-755-23116366 Email: info-JYTee@lets.com, Website: http://jyt.lets.com</p>
--

6 Introduction

6.1 Introduction

SAR is related to the rate at which energy is absorbed per unit mass in an object exposed to a radio field. The SAR distribution in a biological body is complicated and is usually carried out by experimental techniques or numerical modeling. The standard recommends limits for two tiers of groups, occupational/controlled and general population/uncontrolled, based on a person's awareness and ability to exercise control over his or her exposure. In general, occupational/controlled exposure limits are higher than the limits for general population/uncontrolled.

6.2 SAR Definition

The SAR definition is the time derivative (rate) of the incremental energy (dW) absorbed by (dissipated in) an incremental mass (dm) contained in a volume element (dv) of a given density (ρ). The equation description is as below:

$$SAR = \frac{d}{dt} \left(\frac{dU}{dm} \right) = \frac{d}{dt} \left(\frac{dU}{\rho dv} \right)$$

SAR is expressed in units of Watts per kilogram (W/kg)

SAR measurement can be either related to the temperature elevation in tissue by

$$SAR = C \left(\frac{\delta T}{\delta t} \right)$$

Where: C is the specific heat capacity, δT is the temperature rise and δt is the exposure duration, or related to the electrical field in the tissue by

$$SAR = \frac{\sigma \cdot E^2}{\rho}$$

Where: σ is the conductivity of the tissue, ρ is the mass density of the tissue and E is the RMS electrical field strength. However for evaluating SAR of low power transmitter, electrical field measurement is typically applied.

7 RF Exposure Limits

7.1 Uncontrolled Environment

Uncontrolled Environments are defined as locations where there is the exposure of individuals who have no knowledge or control of their exposure. The general population/uncontrolled exposure limits are applicable to situations in which the general public may be exposed or in which persons who are exposed as a consequence of their employment may not be made fully aware of the potential for exposure or cannot exercise control over their exposure. Members of the general public would come under this category when exposure is not employment-related; for example, in the case of a wireless transmitter that exposes persons in its vicinity.

7.2 Controlled Environment

Controlled Environments are defined as locations where there is exposure that may be incurred by persons who are aware of the potential for exposure, (i.e. as a result of employment or occupation). In general, occupational/controlled exposure limits are applicable to situations in which persons are exposed as a consequence of their employment, who have been made fully aware of the potential for exposure and can exercise control over their exposure. This exposure category is also applicable when the exposure is of a transient nature due to incidental passage through a location where the exposure levels may be higher than the general population/uncontrolled limits, but the exposed person is fully aware of the potential for exposure and can exercise control over his or her exposure by leaving the area or by some other appropriate means.

7.3 RF Exposure Limits

SAR Human Exposure Specified in ANSI/IEEE C95.1-1992 and Health Canada Safety Code 6

HUMAN EXPOSURE LIMITS		
	UNCONTROLLED ENVIRONMENT <i>General Population</i> (W/kg) or (mW/g)	CONTROLLED ENVIRONMENT <i>Occupational</i> (W/kg) or (mW/g)
SPATIAL PEAK SAR Brain	1.6	8.0
SPATIAL AVERAGE SAR Whole Body	0.08	0.4
SPATIAL PEAK SAR Hands, Feet, Ankles, Wrists	4.0	20

Note:

1. The Spatial Peak value of the SAR averaged over any 1 gram of tissue (defined as a tissue volume in the shape of a cube) and over the appropriate averaging time.
2. The Spatial Average value of the SAR averaged over the whole body.
3. The Spatial Peak value of the SAR averaged over any 10 grams of tissue (defined as a tissue volume in the shape of a cube) and over the appropriate averaging time.

8 SAR Measurement System

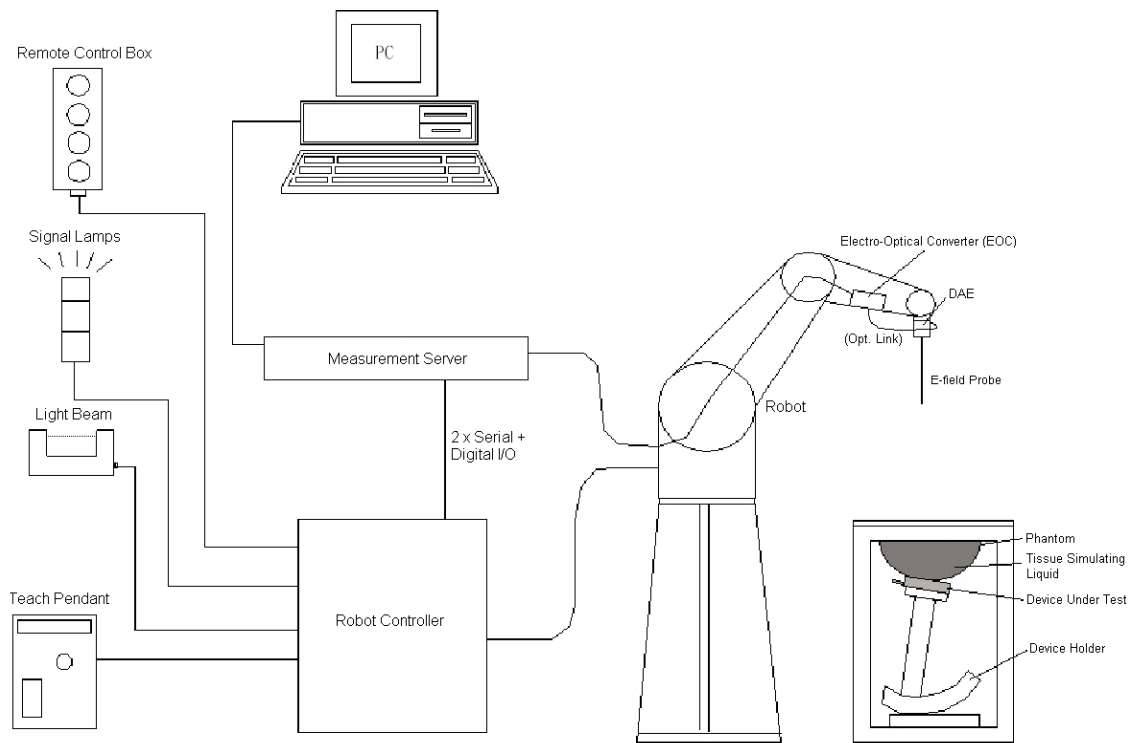


Fig. 8.1 SPEAG DASY System Configurations

The DASY system for performance compliance tests is illustrated above graphically. This system consists of the following items:

- A standard high precision 6-axis robot with controller, a teach pendant and software
- A data acquisition electronic (DAE) attached to the robot arm extension
- A dosimetric probe equipped with an optical surface detector system
- The electro-optical converter (EOC) performs the conversion between optical and electrical signals
- A measurement server performs the time critical tasks such as signal filtering, control of the robot operation and fast movement interrupts.
- A probe alignment unit which improves the accuracy of the probe positioning
- A computer operating Windows XP
- DASY software
- Remote control with teach pendant and additional circuitry for robot safety such as warning lamps, etc.
- The SAM twin phantom
- A device holder
- Tissue simulating liquid
- Dipole for evaluating the proper functioning of the system

Component details are described in the following sub-sections.

8.1 E-Field Probe

The SAR measurement is conducted with the dosimetric probe (manufactured by SPEAG). The probe is specially designed and calibrated for use in liquid with high permittivity. The dosimetric probe has special calibration in liquid at different frequency. This probe has a built in optical surface detection system to prevent from collision with phantom.

➤ **E-Field Probe Specification**
<EX3DV4 Probe>


Construction	Symmetrical design with triangular core Built-in shielding against static charges PEEK enclosure material (resistant to organic solvents, e.g., DGBE)	
Frequency Directivity	10 MHz to 6 GHz; Linearity: ± 0.2 dB ± 0.3 dB in HSL (rotation around probe axis) ± 0.5 dB in tissue material (rotation normal to probe axis)	
Dynamic Range	10 μW/g to 100 mW/g; Linearity: ± 0.2 dB (noise: typically < 1 μW/g)	
Dimensions	Overall length: 330 mm (Tip: 20mm) Tip diameter: 2.5 mm (Body: 12mm) Typical distance from probe tip to dipole centers: 1 mm	

Fig. 8.2 Photo of E-Field Probe

➤ **E-Field Probe Calibration**

Each probe needs to be calibrated according to a dosimetric assessment procedure with accuracy better than ± 10%. The spherical isotropy shall be evaluated and within ± 0.25 dB. The sensitivity parameters (Norm X, Norm Y and Norm Z), the diode compression parameter (DCP) and the conversion factor (ConvF) of the probe are tested. The calibration data can be referred to appendix E of this report.

8.2 Data Acquisition Electronics (DAE)


<p>The Data acquisition electronics (DAE) consists of a highly sensitive electrometer-grade preamplifier with auto-zeroing, a channel and gain-switching multiplexer, a fast 16 bit AD-converter and a command decoder and control logic unit. Transmission to the measurement server is accomplished through an optical downlink for data and status information as well as an optical uplink for commands and the clock. The input impedance of the DAE is 200 MOhm; the inputs are symmetrical and floating. Common mode rejection is above 80 dB.</p>	
---	---

Fig. 8.3 Photo of DAE

8.3 Robot

The SPEAG DASY system uses the high precision robots (DASY5: TX60L) type from Stäubli SA (France). For the 6-axis controller system, the robot controller version (DASY5: CS8c) from Stäubli is used. The Stäubli robot series have many features that are important for our application:

- High precision (repeatability 0.02 mm)
- High reliability (industrial design)
- Low maintenance costs (virtually maintenance free due to direct drive gears; nobelt drives)
- Jerk-free straight movements
- Low ELF interference (motor control fields shielded via the closed metallic construction shields)



Fig. 8.4 Photo of Robot

8.4 Measurement Server

The measurement server is based on a PC/104 CPU board with CPU (DASY 5: 400MHz, Intel Celeron), chip-disk (DASY5: 128 MB), RAM (DASY5: 128 MB). The necessary circuits for communication with the DAE electronic box, as well as the 16 bit AD converter system for optical detection and digital I/O interface are contained on the DASY I/O board, which is directly connected to the PC/104 bus of the CPU board. The measurement server performs all the real-time data evaluation for field measurements and surface detection, controls robot movements and handles safety operations.



Fig. 8.5 Photo of Server for DASY5

8.5 Light Beam Unit

The light beam switch allows automatic "tooling" of the probe. During the process, the actual position of the probe tip with respect to the robot arm is measured, as well as the probe length and the horizontal probe offset. The software then corrects all movements, such that the robot coordinates are valid for the probe tip. The repeatability of this process is better than 0.1 mm. If a position has been taught with an aligned probe, the same position will be reached with another aligned probe within 0.1 mm, even if the other probe has different dimensions. During probe rotations, the probe tip will keep its actual position.



Fig. 8.6 Photo of Light Beam

8.6 Phantom

<SAM Twin Phantom>

Shell Thickness	2 ± 0.2 mm; Center ear point: 6 ± 0.2 mm
Filling Volume Dimensions	Approx. 25 liters Length: 1000mm; Width: 500mm; Height: adjustable feet
Measurement Areas	Left Head, Right Head, Flat phantom



Fig. 8.7 Photo of SAM Twin Phantom

The bottom plate contains three pair of bolts for locking the device holder. The device holder positions are adjusted to the standard measurement positions in the three sections. A white cover is provided to tap the phantom during off-periods to prevent water evaporation and changes in the liquid parameters. On the phantom top, three reference markers are provided to identify the phantom position with respect to the robot.

<ELI4 Phantom >

The ELI4 phantom is intended for compliance testing of handheld and body-mounted wireless devices in the frequency range of 30MHz to 6 GHz. ELI4 is fully compatible with the latest draft of the standard IEC 62209-2 and all known tissue simulating liquids.

ELI4 has been optimized regarding its performance and can be integrated into a SPEAG standard phantom table. A cover prevents evaporation of the liquid. Reference markings on the phantom allow installation of the complete setup, including all predefined phantom positions and measurement grids, by teaching three points. The phantom can be used with the following tissue simulating liquids:

- Water-sugar based liquids can be left permanently in the phantom. Always cover the liquid if the system is not in use; otherwise the parameters will change due to water evaporation.
- DGBE based liquids should be used with care. As DGBE is a softener for most plastics, the liquid should be taken out of the phantom and the phantom should be dried when the system is not in use (desirable at least once a week).
- Do not use other organic solvents without previously testing the phantom resistiveness

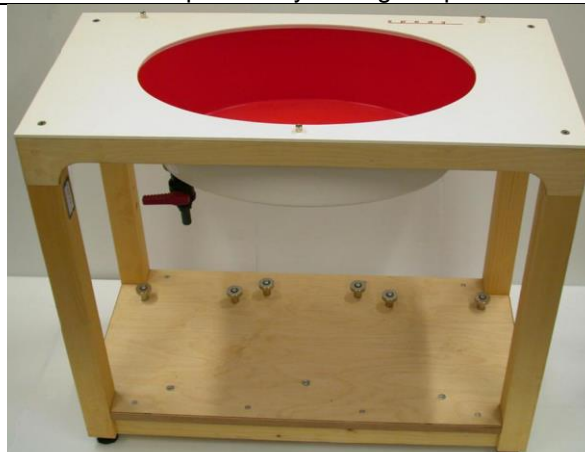


Fig.8.8 Photo of ELI4 Phantom

8.7 Device Holder

<Device Holder for SAM Twin Phantom>

The SAR in the phantom is approximately inversely proportional to the square of the distance between the source and the liquid surface. For a source at 5 mm distance, a positioning uncertainty of ± 0.5 mm would produce a SAR uncertainty of ± 20 %. Accurate device positioning is therefore crucial for accurate and repeatable measurements. The positions in which the devices must be measured are defined by the standards. The DASY device holder is designed to cope with different positions given in the standard. It has two scales for the device rotation (with respect to the body axis) and the device inclination (with respect to the line between the ear reference points). The rotation center for both scales is the ear reference point (ERP). Thus the device needs no repositioning when changing the angles. The DASY device holder is constructed of low-low POM material having the following dielectric parameters: relative permittivity $\epsilon = 3$ and loss tangent $\delta = 0.02$. The amount of dielectric material has been reduced in the closest vicinity of the device, since measurements have suggested that the influence of the clamp on the test results could thus be lowered.



Fig. 8.9 Photo of Device Holder

8.8 Data storage and Evaluation

➤ Data Storage

The DASY software stores the assessed data from the data acquisition electronics as raw data (in microvolt readings from the probe sensors), together with all the necessary software parameters for the data evaluation (probe calibration data, liquid parameters and device frequency and modulation data) in measurement files. The post-processing software evaluates the desired unit and format for output each time the data is visualized or exported. This allows verifications of the complete software setup even after the measurement and allows correction of erroneous parameter settings. For example, if a measurement has been performed with an incorrect crest factor parameter in the device setup, the parameter can be corrected afterwards and the data can be reevaluated.

The measured data can be visualized or exported in different units or formats, depending on the selected probe type (e.g., [V/m], [mW/g]). Some of these units are not available in certain situations or give meaningless results, e.g., a SAR-output in a non-lose media, will always be zero. Raw data can also be exported to perform the evaluation with other software packages.

➤ Data Evaluation

The DASY post-processing software (SEMCAD) automatically executes the following procedures to calculate the field units from the microvolt readings at the probe connector. The parameters used in the evaluation are stored in the configuration modules of the software:

Probe Parameters:	- Sensitivity	Norm _i , a _{i0} , a _{i1} , a _{i2}
	- Conversion	ConvF _i
	- Diode compression point	dcp _i
Device Parameters:	- Frequency	f
	- Crest	cf
Media Parameters:	- Conductivity	σ
	- Density	ρ

These parameters must be set correctly in the software. They can be found in the component documents or they can be imported into the software from the configuration files issued for the DASY components. In the direct measuring mode of the multi-meter option, the parameters of the actual system setup are used. In the scan visualization and export modes, the parameters stored in the corresponding document files are used.

The first step of the evaluation is a linearization of the filtered input signal to account for the compression characteristics of the detector diode. The compensation depends on the input signal, the diode type and the DC-transmission factor from the diode to the evaluation electronics. If the exciting field is pulsed, the crest factor of the signal must be known to correctly compensate for peak power.

The formula for each channel can be given as:

$$V_i = U_i + U_i^2 \cdot \frac{cf}{dcp_i}$$

With V_i = compensated signal of channel i, (i = x, y, z)
 U_i = input signal of channel i, (i = x, y, z)
 cf = crest factor of exciting field (DASY parameter)
 dcp_i = diode compression point (DASY parameter)

From the compensated input signals, the primary field data for each channel can be evaluated:

$$\text{E- Field Probes: } E_i = \sqrt{\frac{V_i}{\text{Norm}_i \cdot \text{ConvF}}}$$

$$\text{H-Field Probes: } H_i = \sqrt{V_i} \cdot \frac{a_{i0} + a_{i1}f + a_{i2}f^2}{f}$$

With V_i = compensated signal of channel i, (i = x, y, z)
 Norm_i = sensor sensitivity of channel i, (i = x, y, z), $\mu\text{V}/(\text{V/m})^2$
 ConvF = sensitivity enhancement in solution
 a_{ij} = sensor sensitivity factors for H-field probes
 f = carrier frequency (GHz)
 E_i = electric field strength of channel i in V/m
 H_i = magnetic field strength of channel i in A/m

The RSS value of the field components gives the total field strength (Hermitian magnitude):

$$E_{tot} = \sqrt{E_x^2 + E_y^2 + E_z^2}$$

The primary field data are used to calculate the derived field units.

$$SAR = E_{tot}^2 \cdot \frac{\sigma}{\rho \cdot 1000}$$

With SAR = local specific absorption rate in mW/g
 E_{tot} = total field strength in V/m
 σ = conductivity in (mho/m) or (Siemens/m)
 ρ = equipment tissue density in g/cm^3

Note that the density is set to 1, to account for actual head tissue density rather than the density of the tissue simulating liquid.

8.9 Test Equipment List

Manufacturer	Equipment Description	Model	Management Number	Cal. Information	
				Last Cal.	Due Date
SPEAG	750MHz System Validation Kit	D750V3	WXJ023	05.18.2023	05.17.2026
SPEAG	835MHz System Validation Kit	D835V2	WXJ023-1	06.08.2022	06.07.2025
SPEAG	1750MHz System Validation Kit	D1750V2	WXJ023-6	01.17.2024	01.16.2027
SPEAG	1900MHz System Validation Kit	D1900V2	WXJ023-2	06.07.2022	06.06.2025
SPEAG	2450MHz System Validation Kit	D2450V2	WXJ023-3	06.06.2022	06.05.2025
SPEAG	2600MHz System Validation Kit	D2600V2	WXJ023-4	10.23.2024	10.22.2027
SPEAG	5GHz System Validation Kit	D5GHZV2	WXJ023-14	01.16.2024	01.15.2027
SPEAG	Data Acquisition Electronics	DAE4	WXJ021	12.31.2024	12.30.2025
SPEAG	Dosimetric E-Field Probe	EX3DV4	WXJ022-1	01.15.2025	01.14.2026
SPEAG	DASY 52 Measurement Software	DASY 52	Version 52.10.4.1527	N.C.R	N.C.R
SPEAG	DASY 52 File Conversion Software	SEMCAD X	Version 14.6.14 (7501)	N.C.R	N.C.R
SPEAG	Robot Controller	CS8Cspeag-TX60	WXG023-1	N.C.R	N.C.R
SPEAG	Phantom	Twin SAM V5.0	WXG023-4	N.C.R	N.C.R
SPEAG	Phantom	2mm Oval Phantom ELI5	WXG023-5	N.C.R	N.C.R
SPEAG	Phone Positioner	N/A	WXG023-6	N.C.R	N.C.R
St?ubli	Robot	TX60Lspeag	WXG023-3	N.C.R	N.C.R
R&S	Broadband radio communication tester	CMW500	WXJ008-3	06.11.2024	06.10.2025
Anritsu	Universal Radio Communication Analyzer	MT8820C	WXJ008-5	12.16.2024	12.15.2026
R&S	Universal Radio Communication Tester	CMU200	WXJ008-2	12.27.2023	12.26.2025
KEYSIGHT	Network Analyzer	E5071C	WXJ091	12.16.2024	12.15.2025
KEYSIGHT	EPM Series Power Meter	N1914A	WXJ075	06.11.2024	06.10.2025
KEYSIGHT	E-Series Power Sensor	E9300H	WXJ075-1	06.11.2024	06.10.2025
KEYSIGHT	E-Series Power Sensor	E9300H	WXJ075-2	06.11.2024	06.10.2025
KEYSIGHT	Signal Generator	N5173B	WXJ006-3	09.09.2024	09.08.2025
SPEAG	Dielectric Assessment Kit	3.5 Probe	WXJ022-2	02.17.2025	02.16.2026
Huber Suhner	RF Cable	SUCOFLEX	WXG008-13	See Note 3	
Huber Suhner	RF Cable	SUCOFLEX	WXG008-14	See Note 3	
Huber Suhner	RF Cable	SUCOFLEX	WXG008-15	See Note 3	
Weinschel	Attenuator	23-3-34	WXG008-16	See Note 3	
Anritsu	Directional Coupler	MP654A	WXG008-17	See Note 3	
SPEAG	DAK Measurement Software	DAK	Version: DAK 3.5	N.C.R	
TXC	Broadband Amplifier	BBA018000	WXG008-11	See Note 4	

Note:

1. The calibration certificate of DASY can be referred to appendix C of this report.
2. Referring to KDB 865664 D01v01r04, the dipole calibration interval can be extended to 3 years with justification. The dipoles are also not physically damaged, or repaired during the interval.
3. The Insertion Loss calibration of Dual Directional Coupler and Attenuator were characterized via the network analyzer and compensated during system check.
4. In system check we need to monitor the level on the power meter, and adjust the power amplifier level to have precise power level to the dipole; the measured SAR will be normalized to 1 W input power according to the ratio of 1 W to the input power to the dipole. For system check, the calibration of the power amplifier is deemed not critically required for correct measurement; the power meter is critical and we do have calibration for it
5. Attenuator insertion loss is calibrated by the network Analyzer, which the calibration is valid, before system check.
6. N.C.R means No Calibration Requirement.

9 Tissue Simulating Liquids

For the measurement of the field distribution inside the SAM phantom with DASY, the phantom must be filled with around 25 liters of homogeneous body tissue simulating liquid. For head SAR testing, the liquid height from the ear reference point (ERP) of the phantom to the liquid top surface is larger than 15 cm, which is shown in Fig. 9.1, for body SAR testing, the liquid height from the center of the flat phantom to liquid top surface is larger than 15 cm, which is shown in Fig. 9.2.



Fig. 9.1 Photo of Liquid Height for Head SAR

Fig. 9.2 Photo of Liquid Height for Body SAR

The relative permittivity and conductivity of the tissue material should be within $\pm 5\%$ of the values given in the table below recommended by the FCC OET 65 supplement C and RSS 102 Issue 5.

Target Frequency (MHz)	ϵr	σ (S/m)
150	52.3	0.76
300	45.3	0.87
450	43.5	0.87
835	41.5	0.90
900	41.5	0.97
915	41.5	0.98
1450	40.5	1.20
1610	40.3	1.29
1800-2000	40.0	1.40
2450	39.2	1.80
3000	38.5	2.40
5800	35.3	5.27

(ϵr = relative permittivity, σ = conductivity and $\rho = 1000 \text{ kg/m}^3$)

The dielectric parameters of liquids were verified prior to the SAR evaluation using a Speag Dielectric Probe Kit and an Agilent Network Analyzer.

The following table shows the measuring results for simulating liquid.

Frequency (MHz)	Liquid Temp. (°C)	Conductivity (σ)	Permittivity (ϵ_r)	Conductivity Target(σ)	Permittivity Target(ϵ_r)	Delta (σ)%	Delta (ϵ_r)%	Limit (%)	Date (yy/mm/dd)
750	22.9	0.88	42.62	0.89	41.90	-0.67	1.71	±5	2025/02/18
835	22.2	0.90	42.23	0.90	41.50	-0.11	1.76	±5	2025/02/22
1750	22.6	1.35	40.75	1.37	40.10	-1.53	1.63	±5	2025/02/25
1900	22.1	1.38	40.67	1.40	40.00	-1.71	1.69	±5	2025/02/28
2450	22.7	1.77	39.87	1.80	39.20	-1.72	1.72	±5	2025/03/03
2600	22.7	1.93	39.68	1.96	39.00	-1.48	1.75	±5	2025/03/03
5200	22.5	4.70	35.85	4.66	36.00	0.90	-0.42	±5	2025/03/06
5800	22.5	5.32	35.16	5.27	35.30	1.01	-0.39	±5	2025/03/06

10 SAR System Verification

Each DASY system is equipped with one or more system validation kits. These units, together with the predefined measurement procedures within the DASY software, enable the user to conduct the system performance check and system validation. System validation kit includes a dipole, tripod holder to fix it underneath the flat phantom and a corresponding distance holder.

➤ Purpose of System Performance check

The system performance check verifies that the system operates within its specifications. System and operator errors can be detected and corrected. It is recommended that the system performance check be performed prior to any usage of the system in order to guarantee reproducible results. The system performance check uses normal SAR measurements in a simplified setup with a well characterized source. This setup was selected to give a high sensitivity to all parameters that might fail or vary over time. The system check does not intend to replace the calibration of the components, but indicates situations where the system uncertainty is exceeded due to drift or failure.

➤ System Setup

In the simplified setup for system evaluation, the EUT is replaced by a calibrated dipole and the power source is replaced by a continuous wave that comes from a signal generator. The calibrated dipole must be placed beneath the flat phantom section of the SAM twin phantom with the correct distance holder. The distance holder should touch the phantom surface with a light pressure at the reference marking and be oriented parallel to the long side of the phantom. The equipment setup is shown below:

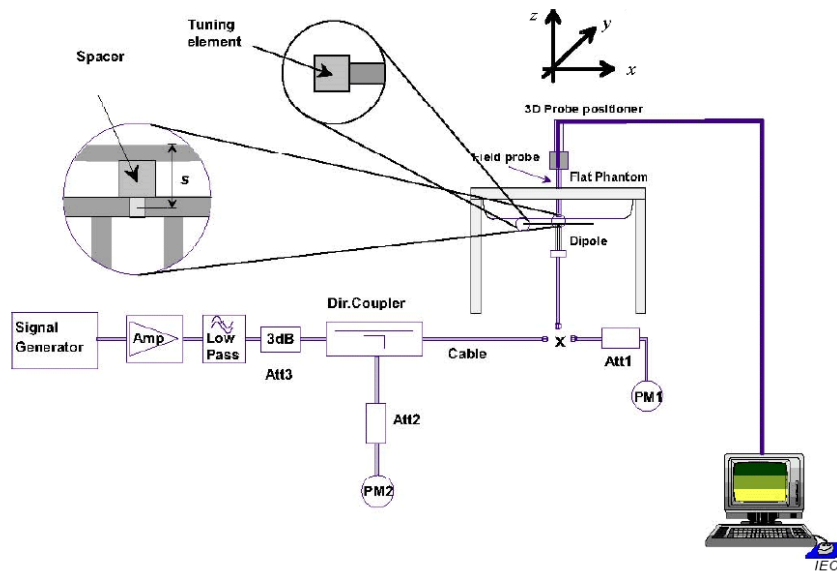


Fig.10.1 System Verification Setup Diagram

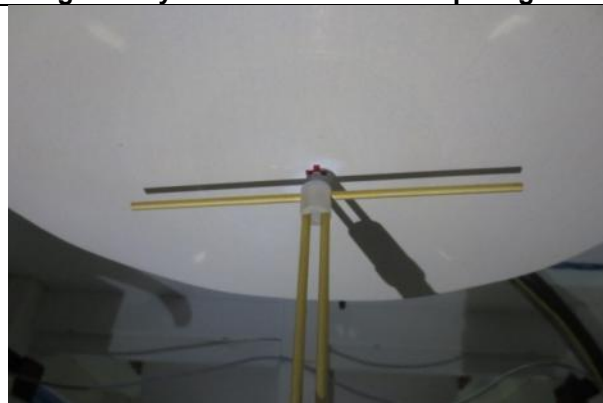


Fig.10.2 Photo of Dipole setup

➤

➤ **System Verification Results**

Comparing to the original SAR value provided by SPEAG, the verification data should be within its specification of 10%. The table as below indicates the system performance check can meet the variation criterion and the plots can be referred to Appendix C of this report.

Date (yy/mm/dd)	Frequency (MHz)	Power fed onto dipole (mW)	Measured 1g SAR (W/kg)	Normalized to 1W 1g SAR (W/kg)	1W Target 1g SAR (W/kg)	Deviation (%)
2025/02/18	750	80	0.663	8.29	8.55	-3.04
2025/02/22	835	80	0.782	9.78	9.6	1.88
2025/02/25	1750	40	1.430	35.75	36.5	-2.05
2025/02/28	1900	40	1.590	39.75	39.9	-0.38
2025/03/03	2450	40	2.140	53.50	53.4	0.19
2025/03/03	2600	40	2.220	55.50	56.3	-1.42
2025/03/06	5200	40	3.150	78.75	77.00	2.27
2025/03/06	5800	40	3.200	80.00	78.90	1.39

11 EUT Testing Position

This EUT was tested in ten different positions. They are right cheek/right tilted/left cheek/left tilted for head, Front/Back/Left Side/Right Side/Top Side/Bottom Side of the EUT with phantom 10 mm gap, as illustrated below, please refer to Appendix B for the test setup photos.

11.1 Handset Reference Points

- The vertical centreline passes through two points on the front side of the handset – the midpoint of the width w_t of the handset at the level of the acoustic output, and the midpoint of the width w_b of the bottom of the handset.
- The horizontal line is perpendicular to the vertical centreline and passes the center of the acoustic output. The horizontal line is also tangential to the handset at point A.
- The two lines intersect at point A. Note that for many handsets, point A coincides with the center of the acoustic output; however, the acoustic output may be located elsewhere on the horizontal line. Also note that the vertical centreline is not necessarily parallel to the front face of the handset, especially for clamshell handsets, handsets with flip covers, and other irregularly shaped handsets.



Fig.11.1 Illustration for Front, Back and Side of SAM Phantom

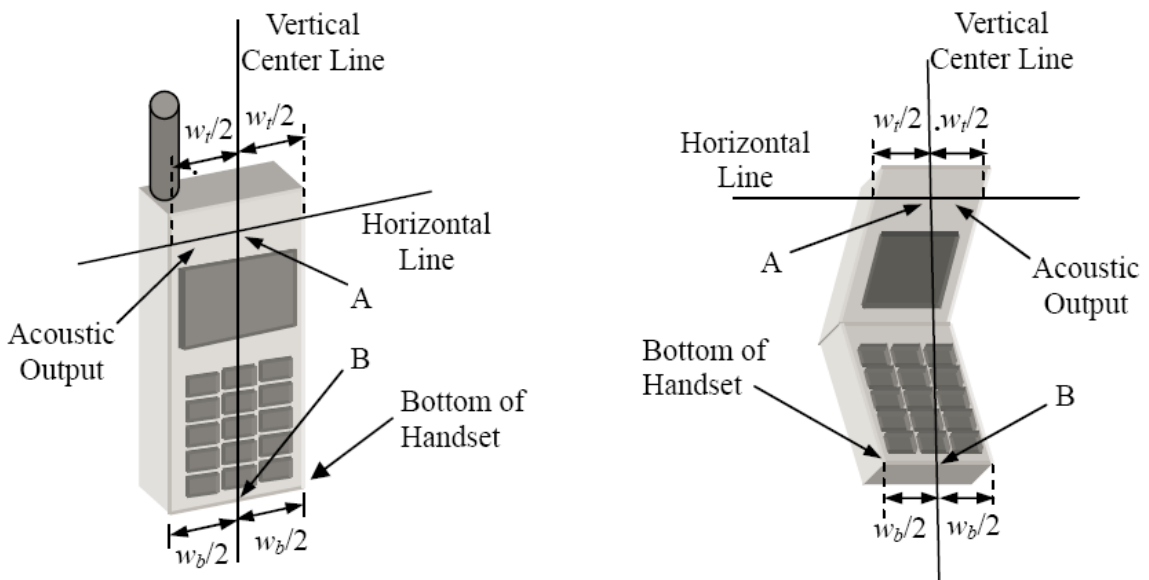


Fig. 11.2 Illustration for Handset Vertical and Horizontal Reference Lines

11.2 Positioning for Cheek / Touch

- To position the device with the vertical center line of the body of the device and the horizontal line crossing the center piece in a plane parallel to the sagittal plane of the phantom. While maintaining the device in this plane, align the vertical center line with the reference plane containing the three ear and mouth reference point (M: Mouth, RE: Right Ear and LE: Left Ear) and align the center of the ear piece with the line RE-LE.
- To move the device towards the phantom with the ear piece aligned with the line LE-RE until the phone touched the ear. While maintaining the device in the reference plane and maintaining the phone contact with the ear, move the bottom of the phone until any point on the front side is in contact with the cheek of the phantom or until contact with the ear is lost (see below figure)



Fig. 11.3 Illustration for Cheek Position

11.3 Positioning for Ear / 15o Tilt

- To position the device in the “cheek” position described above.
- While maintaining the device the reference plane described above and pivoting against the ear, moves it outward away from the mouth by an angle of 15 degrees or until contact with the ear is lost (see figure below).



Fig.11.4 Illustration for Tilted Position

11.4 SAR Evaluations near the Mouth/Jaw Regions of the SAM Phantom

Antennas located near the bottom of a phone may require SAR measurements around the mouth and jaw regions of the SAM head phantom. This typically applies to clam-shell style phones that are generally longer in the unfolded normal use positions or to certain older style long rectangular phones.

Under these circumstances, the following procedures apply, adopted from the FCC guidance on SAR handsets document FCC KDB Publication 648474 D04v01r03. The SAR required in these regions of SAM should be measured using a flat phantom. The phone should be positioned with a separation distance of 4 mm between the ear reference point (ERP) and the outer surface of the flat phantom shell. While maintaining this distance at the ERP location, the low (bottom) edge of the phone should be lowered from the phantom to establish the same separation distance between the peak SAR locations identified by the truncated partial SAR distribution measured with the SAM phantom. The distance from the peak SAR location to the phone is determined by the straight line passing perpendicularly through the phantom surface. When it is not feasible to maintain 4 mm separation at the ERP while also establishing the required separation at the peak SAR location, the top edge of the phone will be allowed to touch the phantom with a separation < 4 mm at the ERP. The phone should not be tilted to the left or right while placed in this inclined position to the flat phantom.

11.5 Body Worn Accessory Configurations

- To position the device parallel to the phantom surface with either keypad up or down.
- To adjust the device parallel to the flat phantom.
- To adjust the distance between the device surface and the flat phantom to 10 mm or holster surface and the flat phantom to 0 mm.

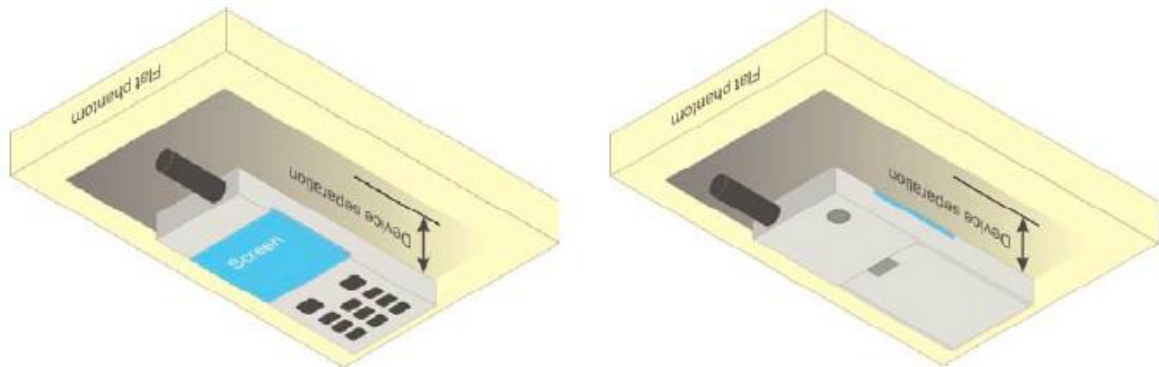


Fig.11.5 Illustration for Body Worn Position

11.6 Wireless Router (Hotspot) Configurations

Some battery-operated handsets have the capability to transmit and receive internet connectivity through simultaneous transmission of WIFI in conjunction with a separate licensed transmitter. The FCC has provided guidance in KDB Publication 941225 D06 where SAR test considerations for handsets ($L \times W \geq 9 \text{ cm} \times 5 \text{ cm}$) are based on a composite test separation distance of 10 mm from the front, back and edges of the device with antennas 2.5 cm or closer to the edge of the device, determined from general mixed use conditions for this type of devices. Since the hotspot SAR results may overlap with the body-worn accessory SAR requirements, the more conservative configurations can be considered, thus excluding some body-worn accessory SAR tests.

When the user enables the personal wireless router functions for the handset, actual operations include simultaneous transmission of both the WIFI transmitter and another licensed transmitter. Both transmitters often do not transmit at the same transmitting frequency and thus cannot be evaluated for SAR under actual use conditions. Therefore, SAR must be evaluated for each frequency transmission and mode separately and summed with the WIFI transmitter according to KDB 648474 publication procedures. The "Portable Hotspot" feature on the handset was NOT activated, to ensure the SAR measurements were evaluated for a single transmission frequency RF signal.

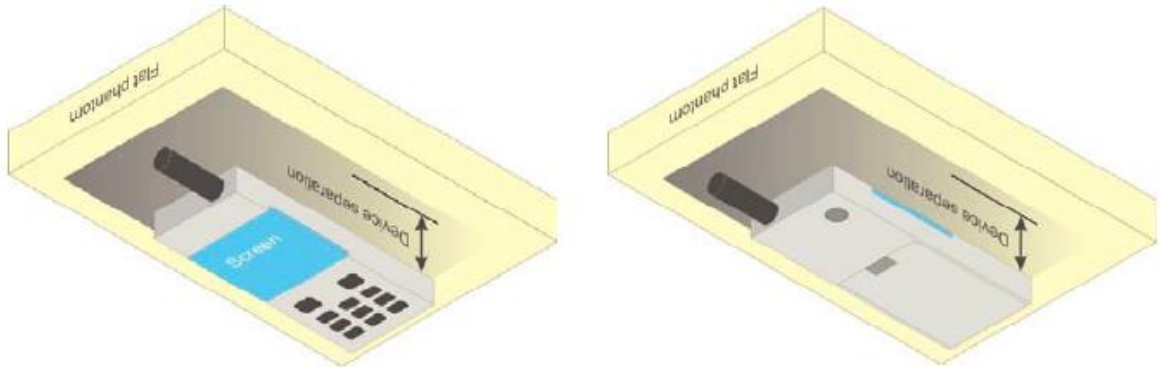


Fig.11.6 Illustration for Hotspot Position

12 Measurement Procedures

The measurement procedures are as below:

<Conducted power measurement>

- For WWAN power measurement, use base station simulator to configure EUT WWAN transition in conducted connection with RF cable, at maximum power in each supported wireless interface and frequency band.
- Read the WWAN RF power level from the base station simulator.
- For WLAN/BT power measurement, use engineering software to configure EUT WLAN/BT continuously transmission, at maximum RF power in each supported wireless interface and frequency band.
- Connect EUT RF port through RF cable to the power meter or spectrum analyzer, and measure WLAN/BT output power.

<Conducted power measurement>

- Use base station simulator to configure EUT WWAN transmission in radiated connection, and engineering software to configure EUT WLAN/BT continuously transmission, at maximum RF power, in the highest power channel.
- Place the EUT in positions as Appendix B demonstrates.
- Set scan area, grid size and other setting on the DASY software.
- Measure SAR results for the highest power channel on each testing position.
- Find out the largest SAR result on these testing positions of each band.
- Measure SAR results for other channels in worst SAR testing position if the Reported SAR or highest power channel is larger than 0.8 W/kg.

According to the test standard, the recommended procedure for assessing the peak spatial-average SAR value consists of the following steps:

- Power reference measurement
- Area scan
- Zoom scan
- Power drift measurement

12.1 Spatial Peak SAR Evaluation

The procedure for spatial peak SAR evaluation has been implemented according to the test standard. It can be conducted for 1g and 10g, as well as for user-specific masses. The DASY software includes all numerical procedures necessary to evaluate the spatial peak SAR value.

The base for the evaluation is a “cube” measurement. The measured volume must include the 1g and 10 g cubes with the highest averaged SAR values. For that purpose, the center of the measured volume is aligned to the interpolated peak SAR value of a previously performed area scan.

The entire evaluation of the spatial peak values is performed within the post-processing engine (SEMCAD). The system always gives the maximum values for 1g and 10g cubes. The algorithm to find the cube with highest averaged SAR is divided into the following stages:

- Extraction of the measured data (grid and values) from the Zoom Scan.
- Calculation of the SAR value at every measurement point based on all stored data (A/D values and measurement parameters).
- Generation of a high-resolution mesh within the measured volume.
- Interpolation of all measured values from the measurement grid to the high-resolution grid
- Extrapolation of the entire 3-D field distribution to the phantom surface over the distance from sensor to surface
- Calculation of the averaged SAR within masses of 1g and 10g.

12.2 Power Reference Measurement

The Power Reference Measurement and Power Drift Measurement are for monitoring the power drift of the device under test in the batch process. The minimum distance of probe sensors to surface determines the closest measurement point to phantom surface. This distance cannot be smaller than the distance of sensor calibration points to probe tip as defined in the probe properties.

12.3 Area & Zoom Scan Procedures

First Area Scan is used to locate the approximate location(s) of the local peak SAR value(s). The measurement grid within an Area Scan is defined by the grid extent, grid step size and grid offset. Next, in order to determine the EM field distribution in a three-dimensional spatial extension, Zoom Scan is required. The Zoom Scan is performed around the highest E-field value to determine the averaged SAR-distribution over 10g. Area scan and zoom scan resolution setting follows KDB 865664 D01v01r04 quoted below.

		≤ 3 GHz	> 3 GHz	
Maximum distance from closest measurement point (geometric center of probe sensors) to phantom surface		5 mm ± 1 mm	$\frac{1}{2} \cdot \delta \cdot \ln(2)$ mm ± 0.5 mm	
Maximum probe angle from probe axis to phantom surface normal at the measurement location		30° ± 1°	20° ± 1°	
Maximum area scan spatial resolution: $\Delta x_{Area}, \Delta y_{Area}$		≤ 2 GHz: ≤ 15 mm 2 – 3 GHz: ≤ 12 mm	3 – 4 GHz: ≤ 12 mm 4 – 6 GHz: ≤ 10 mm	
		When the x or y dimension of the test device, in the measurement plane orientation, is smaller than the above, the measurement resolution must be ≤ the corresponding x or y dimension of the test device with at least one measurement point on the test device.		
Maximum zoom scan spatial resolution: $\Delta x_{Zoom}, \Delta y_{Zoom}$		≤ 2 GHz: ≤ 8 mm 2 – 3 GHz: ≤ 5 mm*	3 – 4 GHz: ≤ 5 mm* 4 – 6 GHz: ≤ 4 mm*	
Maximum zoom scan spatial resolution, normal to phantom surface	uniform grid: $\Delta z_{Zoom}(n)$	≤ 5 mm	3 – 4 GHz: ≤ 4 mm 4 – 5 GHz: ≤ 3 mm 5 – 6 GHz: ≤ 2 mm	
	graded grid	$\Delta z_{Zoom}(1)$: between 1 st two points closest to phantom surface	≤ 4 mm	3 – 4 GHz: ≤ 3 mm 4 – 5 GHz: ≤ 2.5 mm 5 – 6 GHz: ≤ 2 mm
		$\Delta z_{Zoom}(n>1)$: between subsequent points	≤ 1.5 · $\Delta z_{Zoom}(n-1)$ mm	
Minimum zoom scan volume	x, y, z	≥ 30 mm	3 – 4 GHz: ≥ 28 mm 4 – 5 GHz: ≥ 25 mm 5 – 6 GHz: ≥ 22 mm	
<p>Note: δ is the penetration depth of a plane-wave at normal incidence to the tissue medium; see IEEE Std 1528-2013 for details.</p> <p>* When zoom scan is required and the <i>reported</i> SAR from the <i>area scan based 1-g SAR estimation</i> procedures of KDB Publication 447498 is ≤ 1.4 W/kg, ≤ 8 mm, ≤ 7 mm and ≤ 5 mm zoom scan resolution may be applied, respectively, for 2 GHz to 3 GHz, 3 GHz to 4 GHz and 4 GHz to 6 GHz.</p>				

12.4 Volume Scan Procedures

The volume scan is used to assess overlapping SAR distributions for antennas transmitting in different frequency bands. It is equivalent to an oversized zoom scan used in standalone measurements. The measurement volume will be used to enclose all the simultaneous transmitting antennas. For antennas transmitting simultaneously in different frequency bands, the volume scan is measured separately in each frequency band. In order to sum correctly to compute the 1g aggregate SAR, the EUT remains in the same test position for all measurements and all volume scans use the same spatial resolution and grid spacing. When all volume scans are completed, the software, SEMCAD post-processor scans combine and subsequently superpose these measurement data to calculate the multiband SAR.

12.5 SAR Averaged Methods

In DASYS, the interpolation and extrapolation are both based on the modified Quadratic Shepard's method. The interpolation scheme combines a least-square fitted function method and a weighted average method which are the two basic types of computational interpolation and approximation.

Extrapolation routines are used to obtain SAR values between the lowest measurement points and the inner phantom surface. The extrapolation distance is determined by the surface detection distance and the probe sensor offset. The uncertainty increases with the extrapolation distance. To keep the uncertainty within 1% for the 1g and 10g cubes, the extrapolation distance should not be larger than 5 mm.

12.6 Power Drift Monitoring

All SAR testing is under the EUT with a full charged battery and transmit maximum output power. In DASYS measurement software, the power reference measurement and power drift measurement procedures are used for monitoring the power drift of EUT during SAR testing. Both these procedures measure the field at a specified reference position before and after the SAR testing. The software will calculate the field difference in dB. If the power drifts more than 5%, the SAR will be retested.

13 Conducted RF Output Power

13.1 GSM Conducted Power

Band: GSM 850 Channel	Burst Average Power (dBm)			Frame-Average Power(dBm)		
	128	190	251	128	190	251
Frequency (MHz)	824.2	836.6	848.8	824.2	836.6	848.8
GSM (GMSK, Voice)	32.58	32.80	32.61	23.55	23.77	23.58
GPRS (GMSK, 1 TX slot)	32.69	32.89	32.69	23.66	23.86	23.66
GPRS (GMSK, 2 TX slots)	32.16	32.34	32.17	26.14	26.32	26.15
GPRS (GMSK, 3 TX slots)	30.30	30.52	30.35	26.04	26.26	26.09
GPRS (GMSK, 4 TX slots)	29.27	29.46	29.31	26.26	26.45	26.30
EGPRS (8PSK, 1 TX slot)	26.67	26.46	26.53	17.64	17.43	17.50
EGPRS (8PSK, 2 TX slots)	25.29	25.07	25.13	19.27	19.05	19.11
EGPRS (8PSK, 3 TX slots)	23.03	22.82	22.89	18.77	18.56	18.63
EGPRS (8PSK, 4 TX slots)	21.43	21.19	21.48	18.42	18.18	18.47

Remark:

- The frame-averaged power is linearly reported the maximum burst averaged power over 8 time slots. The calculated method are shown as below:
The duty cycle "x" of different time slots as below:
1 TX slot is 1/8, 2 TX slots is 2/8, 3 TX slots is 3/8 and 4 TX slots is 4/8
Based on the calculation formula:
Frame-averaged power = Burst averaged power + 10 log (x)
So,
Frame-averaged power (1 TX slot) = Burst averaged power (1 TX slot)– 9.03
Frame-averaged power (2 TX slots) = Burst averaged power (2 TX slots)– 6.02
Frame-averaged power (3 TX slots) = Burst averaged power (3 TX slots)– 4.26
Frame-averaged power (4 TX slots) = Burst averaged power (4 TX slots) – 3.01
- CS1 coding scheme was used in GPRS conducted power measurements and SAR testing, MCS5 coding scheme was used in EGPRS conducted power measurements and SAR testing (if necessary).

Note:

- For Head SAR testing, GSM Voice mode should be evaluated, therefore the EUT was set in GSM 850 Voice mode.
- For Body worn SAR testing and Hotspot mode SAR testing, GPRS and EGPRS mode should be evaluated, therefore the EUT was set in GPRS 4 TX slots mode due to the highest frame-averaged power.
- For GPRS multi time slots SAR measurement, when the measured maximum output power levels are within 0.25 dB of each other, test the configuration with the most number of time slots.
- Per KDB447498 D01v06, the maximum output power channel is used for SAR testing and for further SAR test reduction.

Band: PCS 1900 Channel	Burst Average Power (dBm)			Frame-Average Power(dBm)		
	512	661	810	512	661	810
Frequency (MHz)	1850.2	1880.0	1909.8	1850.2	1880.0	1909.8
GSM (GMSK, Voice)	29.78	30.12	29.97	20.75	21.09	20.94
GPRS (GMSK, 1 TX slot)	29.81	30.11	29.98	20.78	21.08	20.95
GPRS (GMSK, 2 TX slots)	29.06	29.40	29.28	23.04	23.38	23.26
GPRS (GMSK, 3 TX slots)	27.19	27.65	27.57	22.93	23.39	23.31
GPRS (GMSK, 4 TX slots)	26.13	26.60	26.56	23.12	23.59	23.55
EGPRS (8PSK, 1 TX slot)	24.84	25.13	25.22	15.81	16.10	16.19
EGPRS (8PSK, 2 TX slots)	23.58	23.90	24.01	17.56	17.88	17.99
EGPRS (8PSK, 3 TX slots)	21.30	21.69	21.73	17.04	17.43	17.47
EGPRS (8PSK, 4 TX slots)	19.95	20.26	20.37	16.94	17.25	17.36

Remark:

- The frame-averaged power is linearly reported the maximum burst averaged power over 8 time slots. The calculated method are shown as below:
The duty cycle "x" of different time slots as below:
1 TX slot is 1/8, 2 TX slots is 2/8, 3 TX slots is 3/8 and 4 TX slots is 4/8
Based on the calculation formula:
Frame-averaged power = Burst averaged power + 10 log (x)
So,
Frame-averaged power (1 TX slot) = Burst averaged power (1 TX slot)– 9.03
Frame-averaged power (2 TX slots) = Burst averaged power (2 TX slots)– 6.02
Frame-averaged power (3 TX slots) = Burst averaged power (3 TX slots)– 4.26
Frame-averaged power (4 TX slots) = Burst averaged power (4 TX slots) – 3.01
- CS1 coding scheme was used in GPRS conducted power measurements and SAR testing, MCS5 coding scheme was used in EGPRS conducted power measurements and SAR testing (if necessary).

Note:

- For Head SAR testing, GSM Voice mode should be evaluated, therefore the EUT was set in PCS 1900 Voice mode.
- For Body worn SAR testing and Hotspot mode SAR testing, GPRS and EGPRS mode should be evaluated, therefore the EUT was set in GPRS 4 TX slots mode due to the highest frame-averaged power.
- Per KDB447498 D01v06, the maximum output power channel is used for SAR testing and for further SAR test reduction.

13.2 WCDMA Conducted Power

The following tests were conducted according to the test requirements outlines in 3GPP TS 34.121 specification. A summary of these settings are illustrated below:

HSDPA Setup Configuration:

- a. The EUT was connected to Base Station Rohde & Schwarz CMU200 referred to the Setup Configuration.
- b. The RF path losses were compensated into the measurements.
- c. A call was established between EUT and Base Station with following setting:
 - i. Set Gain Factors (β_c and β_d) and parameters were set according to each
 - ii. Specific sub-test in the following table, C10.1.4, quoted from the TS 34.121
 - iii. Set RMC 12.2kbps + HSDPA mode.
 - iv. Set Cell Power = -86 dBm
 - v. Set HS-DSCH Configuration Type to FRC (H-set 1, QPSK)
 - vi. Select HSDPA Uplink Parameters
 - vii. Set Delta ACK, Delta NACK and Delta CQI = 8
 - viii. Set Ack-Nack Repetition Factor to 3
 - ix. Set CQI Feedback Cycle (k) to 4 ms
 - x. Set CQI Repetition Factor to 2
 - xi. Power Ctrl Mode = All Up bits
- d. The transmitted maximum output power was recorded.

Table 1

Sub-test	β_c	β_d	β_d (SF)	β_c/β_d	$\beta_{hs}^{(1)}$	CM (dB) ⁽²⁾
1	2/15	15/15	64	2/15	4/15	0.0
2	12/15 ⁽³⁾	15/15 ⁽³⁾	64	12/15 ⁽³⁾	24/15	1.0
3	15/15	8/15	64	15/8	30/15	1.5
4	15/15	4/15	64	15/4	30/15	1.5

Note 1: $\Delta_{ACK}, \Delta_{NACK}$ and $\Delta_{CQI} = 8 \Leftrightarrow A_{hs} = \beta_{hs}/\beta_c = 30/15 \Leftrightarrow \beta_{hs} = 30/15 * \beta_c$
 Note 2: CM = 1 for $\beta_c/\beta_d = 12/15, \beta_{hs}/\beta_c = 24/15$.
 Note 3: For subtest 2 the β_c/β_d ratio of 12/15 for the TFC during the measurement period (TF1, TF0) is achieved by setting the signaled gain factors for the reference TFC (TF1, TF1) to $\beta_c = 11/15$ and $\beta_d = 15/15$.

HSDPA Sub-test setup configuration

HSUPA Setup Configuration:

- a. The EUT was connected to Base Station Rohde & Schwarz CMU200 referred to the Setup Configuration.
- b. The RF path losses were compensated into the measurements.
- c. A call was established between EUT and Base Station with following setting * :
 - i. Call Configs = 5.2B, 5.9B, 5.10B, and 5.13.2B with QPSK
 - ii. Set the Gain Factors (β_c and β_d) and parameters (AG Index) were set according to each specific sub-test in the following table, C11.1.3, quoted from the TS 34.121
 - iii. Set Cell Power = -86 dBm
 - iv. Set Channel Type = 12.2k + HSPA
 - v. Set UE Target Power
 - vi. Power Ctrl Mode= Alternating bits
 - vii. Set and observe the E-TFCI
 - viii. Confirm that E-TFCI is equal to the target E-TFCI of 75 for sub-test 1, and other subtest's E-TFCI
- d. The transmitted maximum output power was recorded.

Table 2

Sub-test	β_c	β_d	β_d (SF)	β_c/β_d	$\beta_{hs}^{(1)}$	β_{ec}	β_{ed}	β_{ed} (SF)	β_{ed} (codes)	CM ⁽²⁾ (dB)	MPR (dB)	AG ⁽⁴⁾ Index	E-TFCI
1	11/15 ⁽³⁾	15/15 ⁽³⁾	64	11/15 ⁽³⁾	22/15	209/225	1039/225	4	1	1.0	0.0	20	75
2	6/15	15/15	64	6/15	12/15	12/15	94/75	4	1	3.0	2.0	12	67
3	15/15	9/15	64	15/9	30/15	30/15	$\beta_{ed1}: 47/15$ $\beta_{ed2}: 47/15$	4	2	2.0	1.0	15	92
4	2/15	15/15	64	2/15	4/15	2/15	56/75	4	1	3.0	2.0	17	71
5	15/15 ⁽⁴⁾	15/15 ⁽⁴⁾	64	15/15 ⁽⁴⁾	30/15	24/15	134/15	4	1	1.0	0.0	21	81

Note 1: $\Delta_{ACK}, \Delta_{NACK}$ and $\Delta_{CQI} = 8 \Leftrightarrow A_{hs} = \beta_{hs}/\beta_c = 30/15 \Leftrightarrow \beta_{hs} = 30/15 * \beta_c$.

Note 2: CM = 1 for $\beta_c/\beta_d = 12/15, \beta_{hs}/\beta_c = 24/15$. For all other combinations of DPDCH, DPCCH, HS-DPCCH, E-DPDCH and E-DPCCH the MPR is based on the relative CM difference.

Note 3: For subtest 1 the β_c/β_d ratio of 11/15 for the TFC during the measurement period (TF1, TF0) is achieved by setting the signaled gain factors for the reference TFC (TF1, TF1) to $\beta_c = 10/15$ and $\beta_d = 15/15$.

Note 4: For subtest 5 the β_c/β_d ratio of 15/15 for the TFC during the measurement period (TF1, TF0) is achieved by setting the signaled gain factors for the reference TFC (TF1, TF1) to $\beta_c = 14/15$ and $\beta_d = 15/15$.

Note 5: Testing UE using E-DPDCH Physical Layer category 1 Sub-test 3 is not required according to TS 25.306 Table 5.1g.

Note 6: β_{ed} cannot be set directly; it is set by Absolute Grant Value.

HSUPA Sub-test setup configuration

WCDMA Conducted Power:

WCDMA Average power (dBm)			
Band	WCDMA Band II		
Channel	9262	9400	9538
Frequency (MHz)	1852.4	1880.0	1907.6
AMR 12.2 kbps	23.68	24.09	24.07
RMC 12.2 kbps	23.67	24.13	24.07
HSDPA Sub-test 1	22.66	23.11	23.05
HSDPA Sub-test 2	22.12	22.57	22.50
HSDPA Sub-test 3	22.18	22.63	22.56
HSDPA Sub-test 4	22.15	22.64	22.56
HSUPA Sub-test 1	20.63	21.08	20.97
HSUPA Sub-test 2	21.14	21.57	21.50
HSUPA Sub-test 3	21.62	22.10	22.02
HSUPA Sub-test 4	20.64	21.10	21.03
HSUPA Sub-test 5	22.64	23.10	23.02

WCDMA Average power (dBm)			
Band	WCDMA Band IV		
Channel	1312	1413	1513
Frequency (MHz)	1712.4	1732.6	1752.6
AMR 12.2 kbps	23.49	23.42	23.50
RMC 12.2 kbps	23.53	23.52	23.48
HSDPA Sub-test 1	22.53	22.53	22.53
HSDPA Sub-test 2	22.04	22.02	21.97
HSDPA Sub-test 3	22.08	22.06	22.02
HSDPA Sub-test 4	22.03	21.99	21.96
HSUPA Sub-test 1	20.51	20.50	20.47
HSUPA Sub-test 2	21.01	21.01	20.95
HSUPA Sub-test 3	21.53	21.53	21.49
HSUPA Sub-test 4	20.51	20.51	20.48
HSUPA Sub-test 5	22.54	22.52	22.50

WCDMA Average power (dBm)			
Band	WCDMA Band V		
Channel	4132	4183	4233
Frequency (MHz)	826.4	836.6	846.6
AMR 12.2 kbps	23.80	23.96	23.58
RMC 12.2 kbps	23.74	23.91	23.57
HSDPA Sub-test 1	22.77	22.94	22.61
HSDPA Sub-test 2	22.28	22.44	22.12
HSDPA Sub-test 3	22.36	22.49	22.13
HSDPA Sub-test 4	22.28	22.45	22.10
HSUPA Sub-test 1	20.59	20.75	20.42
HSUPA Sub-test 2	21.10	21.29	20.95
HSUPA Sub-test 3	21.62	21.80	21.45
HSUPA Sub-test 4	20.63	20.78	20.47
HSUPA Sub-test 5	22.60	22.40	22.47

Note:

1. Applying the subtest setup in Table C.11.1.3 of 3GPP TS 34.121-1
2. Per KDB 941225 D01, RMC 12.2kbps mode is used to evaluate SAR due the highest output power. If AMR 12.2 kbps power is < 0.25dB higher than RMC 12.2kbps, SAR tests with AMR 12.2 kbps can be excluded.
3. AMR, HSDPA RF power will not be larger than RMC 12.2kbps, detailed information is included in Tune-up Procure exhibit.

13.3 LTE Conducted Power

13.3.1 Largest channel bandwidth standalone SAR test requirements

QPSK with 1 RB allocation

Start with the largest channel bandwidth and measure SAR for QPSK with 1 RB allocation, using the RB offset and required test channel combination with the highest maximum output power among RB offsets at the upper edge, middle and lower edge of each required test channel. When the reported SAR is ≤ 0.8 W/kg, testing of the remaining RB offset configurations and required test channels is not required for 1 RB allocation; otherwise, SAR is required for the remaining required test channels and only for the RB offset configuration with the highest output power for that channel.⁸ When the reported SAR of a required test channel is > 1.45 W/kg, SAR is required for all three RB offset configurations for that required test channel.

QPSK with 50% RB allocation

The procedures required for 1 RB allocation in section 4.2.1 are applied to measure the SAR for QPSK with 50% RB allocation.⁹

QPSK with 100% RB allocation

For QPSK with 100% RB allocation, SAR is not required when the highest maximum output power for 100 % RB allocation is less than the highest maximum output power in 50% and 1 RB allocations and the highest reported SAR for 1 RB and 50% RB allocation in sections 4.2.1 and 4.2.2 are ≤ 0.8 W/kg. Otherwise, SAR is measured for the highest output power channel; and if the reported SAR is > 1.45 W/kg, the remaining required test channels must also be tested.

Higher order modulations

For each modulation besides QPSK; e.g., 16-QAM, 64-QAM, apply the QPSK procedures in sections 4.2.1, 5.2.2 and 4.2.3 to determine the QAM configurations that may need SAR measurement. For each configuration identified as required for testing, SAR is required only when the highest maximum output power for the configuration in the higher order modulation is $> ?$ dB higher than the same configuration in QPSK or when the reported SAR for the QPSK configuration is > 1.45 W/kg.

13.3.2 Other channel bandwidth standalone SAR test requirements

For the other channel bandwidths used by the device in a frequency band, apply all the procedures required for the largest channel bandwidth in section 4.2 to determine the channels and RB configurations that need SAR testing and only measure SAR when the highest maximum output power of a configuration requiring testing in the smaller channel bandwidth is $> ?$ dB higher than the equivalent channel configurations in the largest channel bandwidth configuration or the reported SAR of a configuration for the largest channel bandwidth is > 1.45 W/kg. The equivalent channel configuration for the RB allocation, RB offset and modulation etc. is determined for the smaller channel bandwidth according to the same number of RB allocated in the largest channel bandwidth. For example, 50 RB in 10 MHz channel bandwidth does not apply to 5 MHz channel bandwidth; therefore, this cannot be tested in the smaller channel bandwidth. However, 50% RB allocation in 10 MHz channel bandwidth is equivalent to 100% RB allocation in 5 MHz channel bandwidth; therefore, these are the equivalent configurations to be compared to determine the specific channel and configuration in the smaller channel bandwidth that need SAR testing.

13.3.3 TDD LTE configuration setup for SAR measurement

According to KDB 941225 D05v02r03 and April 2013 TCB workshop slides, SAR must be tested with a fixed periodic duty factor according to the highest transmission duty factor implemented for the device and supported by 3GPP.

- see 3GPP TS 36.211 section 4.2 for Type 2 Frame Structure and Table 4.2-2 for uplink-downlink configurations
- “special subframe S” contains both uplink and downlink transmissions and must be taken into consideration to determine the transmission duty factor
 - according to the worst case uplink and downlink cyclic prefix requirements for UpPTS to determine the highest SAR test duty factor

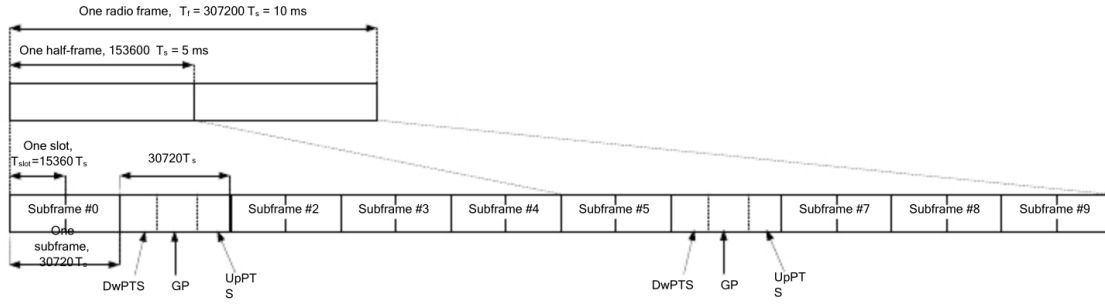


Figure 4.2-1: Frame structure type 2 (for 5 ms switch-point periodicity).

Table 4.2-1: Configuration of special subframe (lengths of DwPTS/GP/UpPTS).

Special subframe configuration	Normal cyclic prefix in downlink		Extended cyclic prefix in downlink			
	DwPTS	UpPTS	DwPTS	Normal cyclic prefix in uplink	Extended cyclic prefix in uplink	
		Normal cyclic prefix in uplink	Extended cyclic prefix in uplink			
0	$6592 \cdot T_s$	$2192 \cdot T_s$	$2560 \cdot T_s$	$7680 \cdot T_s$	$2192 \cdot T_s$	$2560 \cdot T_s$
1	$19760 \cdot T_s$			$20480 \cdot T_s$		
2	$21952 \cdot T_s$			$23040 \cdot T_s$		
3	$24144 \cdot T_s$			$25600 \cdot T_s$		
4	$26336 \cdot T_s$			$7680 \cdot T_s$		
5	$6592 \cdot T_s$	$4384 \cdot T_s$	$5120 \cdot T_s$	$20480 \cdot T_s$	$4384 \cdot T_s$	$5120 \cdot T_s$
6	$19760 \cdot T_s$			$23040 \cdot T_s$		
7	$21952 \cdot T_s$			-		
8	$24144 \cdot T_s$			-		

Per 3GPP 36.211 section 4.2, each radio frame of length $T_f=37200 \cdot T_s = 10$ ms consists of two half-frames of length $153600 \cdot T_s = 5$ ms each. Each half-frame consists of five subframes of length $30720 \cdot T_s = 1$ ms. So, the uplink duty factor in special subframe as below:

Special Subframe configuration	Normal cyclic prefix in downlink		Extended cyclic prefix in downlink	
	Duty factor of Uplink		Duty factor of Uplink	
	Normal cyclic prefix in uplink	Extended cyclic prefix in uplink	Normal cyclic prefix in uplink	Extended cyclic prefix in uplink
0	7.14%	8.33%	7.14%	8.33%
1	7.14%	8.33%	7.14%	8.33%
2	7.14%	8.33%	7.14%	8.33%
3	7.14%	8.33%	7.14%	8.33%
4	7.14%	8.33%	14.27%	16.67%
5	14.27%	16.67%	14.27%	16.67%
6	14.27%	16.67%	14.27%	16.67%
7	14.27%	16.67%	14.27%	16.67%
8	14.27%	16.67%	/	/
9	14.27%	16.67%	/	/

Table 4.2-2: Uplink-downlink configurations.

Uplink-downlink configuration	Downlink-to-Uplink Switch-point periodicity	Subframe number									
		0	1	2	3	4	5	6	7	8	9
0	5 ms	D	S	U	U	U	D	S	U	U	U
1	5 ms	D	S	U	U	D	D	S	U	U	D
2	5 ms	D	S	U	D	D	D	S	U	D	D
3	10 ms	D	S	U	U	U	D	D	D	D	D
4	10 ms	D	S	U	U	D	D	D	D	D	D
5	10 ms	D	S	U	D	D	D	D	D	D	D
6	5 ms	D	S	U	U	U	D	S	U	U	D

According to above table:

1. The highest duty factor is configuration 0;
2. The duty factor of uplink in one half-frame with normal cyclic prefix is: $(3\text{ms} + 0.143\text{ms})/5\text{ms}=62.86\%$;
3. The duty factor of uplink in one half-frame with extended cyclic prefix is: $(3\text{ms} + 0.167\text{ms})/5\text{ms}=63.34\%$;
4. For purpose to get the worst case SAR test duty factor, the duty factor of normal cyclic prefix in uplink scaled-up to the extended cyclic prefix in uplink, the scaling factor is $63.34\%/62.86\%=1.008$, and the scaling factor will be taken into the final measured SAR.

LTE Band 7 part:

LTE Band	Bandwidth (MHz)	Modulation	RB Size	RB Offset	Average Power (dBm)		
					20775	21100	21425
					2502.5MHz	2535MHz	2567.5MHz
Band 7	5	QPSK	1	0	24.20	24.38	23.99
			1	12	24.26	24.06	24.03
			1	24	24.26	24.03	23.98
			12	0	23.09	23.46	23.38
			12	6	23.07	23.46	23.41
			12	11	23.08	23.46	23.40
			25	0	23.12	23.45	23.37
		16QAM	1	0	23.07	23.14	22.91
			1	12	23.08	23.11	22.92
			1	24	23.12	23.14	22.90
			12	0	22.11	22.55	22.40
			12	6	22.11	22.56	22.41
			12	11	22.12	22.54	22.40
			25	0	22.16	22.47	22.46
		64QAM	1	0	22.07	22.50	22.14
			1	12	22.12	22.51	22.19
			1	24	22.14	22.45	22.13
			12	0	21.13	21.51	21.42
			12	6	21.10	21.52	21.42
			12	11	21.10	21.51	21.40
			25	0	21.11	21.41	21.41

LTE Band	Bandwidth (MHz)	Modulation	RB Size	RB Offset	Average Power (dBm)		
					20800	21100	21400
					2505MHz	2535MHz	2565MHz
Band 7	10	QPSK	1	0	24.00	23.78	23.85
			1	24	24.09	23.82	23.86
			1	49	23.87	23.78	23.79
			25	0	23.12	23.39	23.38
			25	12	23.06	23.39	23.35
			25	24	23.10	23.40	23.39
			50	0	23.22	23.44	23.39
		16QAM	1	0	23.28	22.80	23.06
			1	24	23.13	22.79	23.04
			1	49	22.97	22.73	23.02
			25	0	22.13	22.48	22.38
			25	12	22.12	22.44	22.37
			25	24	22.14	22.49	22.36
			50	0	22.16	22.44	22.38
		64QAM	1	0	22.08	22.24	21.85
			1	24	21.90	22.26	21.86
			1	49	21.85	22.19	21.79
			25	0	21.07	21.39	21.38
			25	12	21.05	21.40	21.37
			25	24	21.09	21.41	21.36
			50	0	21.16	21.40	21.35

LTE Band	Bandwidth (MHz)	Modulation	RB Size	RB Offset	Average Power (dBm)		
					20825	21100	21375
					2507.5MHz	2535MHz	2562.5MHz
Band 7	15	QPSK	1	0	23.86	23.97	23.83
			1	37	24.06	23.75	23.91
			1	74	24.10	23.74	23.78
			36	0	23.02	23.36	23.35
			36	16	23.03	23.38	23.37
			36	35	22.98	23.36	23.34
			75	0	23.10	23.37	23.36
		16QAM	1	0	23.20	22.67	22.99
			1	37	23.37	22.75	23.10
			1	74	23.44	22.71	22.96
			36	0	22.09	22.41	22.40
			36	16	22.08	22.40	22.40
			36	35	22.09	22.42	22.38
			75	0	22.10	22.41	22.33
		64QAM	1	0	22.12	22.15	21.81
			1	37	22.28	22.24	21.88
			1	74	22.36	22.15	21.76
			36	0	21.00	21.37	21.40
			36	16	20.96	21.36	21.40
			36	35	21.00	21.39	21.43
			75	0	21.13	21.39	21.37

LTE Band	Bandwidth (MHz)	Modulation	RB Size	RB Offset	Average Power (dBm)		
					20850	21100	21350
					2510MHz	2535MHz	2560MHz
Band 7	20	QPSK	1	0	23.69	23.61	23.87
			1	49	23.98	23.75	24.00
			1	99	23.70	23.65	23.87
			50	0	23.08	23.43	23.45
			50	24	23.09	23.41	23.46
			50	49	23.10	23.44	23.47
			100	0	23.14	23.45	23.42
		16QAM	1	0	22.99	22.79	22.82
			1	49	22.99	22.97	22.92
			1	99	23.00	22.82	22.76
			50	0	22.10	22.46	22.45
			50	24	22.09	22.48	22.47
			50	49	22.11	22.48	22.46
			100	0	22.11	22.43	22.44
		64QAM	1	0	21.99	21.68	22.09
			1	49	21.96	21.86	22.14
			1	99	21.96	21.74	22.02
			50	0	21.08	21.39	21.44
			50	24	21.09	21.42	21.47
			50	49	21.08	21.41	21.46
			100	0	21.14	21.42	21.39

LTE Band 12 part:

LTE Band	Bandwidth (MHz)	Modulation	RB Size	RB Offset	Average Power (dBm)		
					23017	23095	23175
					699.7MHz	707.5MHz	715.3MHz
Band 12	1.4	QPSK	1	0	23.45	23.51	23.65
			1	2	23.44	23.45	23.61
			1	5	23.44	23.49	23.60
			3	0	23.50	23.54	23.77
			3	1	23.52	23.57	23.82
			3	2	23.54	23.55	23.79
		16QAM	6	0	22.56	22.53	22.73
			1	0	22.67	22.69	22.91
			1	2	22.70	22.78	22.96
			1	5	22.65	22.73	22.96
			3	0	22.44	22.46	22.68
			3	1	22.43	22.44	22.71
		64QAM	3	2	22.45	22.44	22.69
			6	0	21.67	21.44	21.57
			1	0	22.00	21.57	21.76
			1	2	21.99	21.63	21.83
			1	5	21.98	21.56	21.78
			3	0	21.60	21.31	21.49
			3	1	21.58	21.31	21.52
			3	2	21.58	21.31	21.54
			6	0	20.44	20.35	20.58

LTE Band	Bandwidth (MHz)	Modulation	RB Size	RB Offset	Average Power (dBm)		
					23025	23095	23165
					700.5MHz	707.5MHz	714.5MHz
Band 12	3	QPSK	1	0	23.53	23.41	23.72
			1	7	23.49	23.42	23.72
			1	14	23.49	23.40	23.74
			8	0	22.52	22.39	22.64
			8	4	22.52	22.40	22.63
			8	7	22.48	22.45	22.64
			15	0	22.53	22.45	22.67
		16QAM	1	0	22.77	22.29	22.83
			1	7	22.74	22.36	22.85
			1	14	22.70	22.34	22.90
			8	0	21.59	21.47	21.72
			8	4	21.63	21.44	21.73
			8	7	21.59	21.49	21.69
			15	0	21.50	21.39	21.66
		64QAM	1	0	21.69	21.73	21.58
			1	7	21.67	21.84	21.71
			1	14	21.62	21.84	21.72
			8	0	20.60	20.46	20.72
			8	4	20.59	20.44	20.71
			8	7	20.57	20.46	20.71
			15	0	20.55	20.46	20.80

LTE Band	Bandwidth (MHz)	Modulation	RB Size	RB Offset	Average Power (dBm)		
					23035	23095	23155
					701.5MHz	707.5MHz	713.5MHz
Band 12	5	QPSK	1	0	23.68	23.62	23.78
			1	12	23.67	23.65	23.84
			1	24	23.65	23.72	23.90
			12	0	22.51	22.39	22.72
			12	6	22.52	22.38	22.77
			12	11	22.51	22.38	22.75
			25	0	22.52	22.46	22.69
		16QAM	1	0	22.82	22.62	22.61
			1	12	22.76	22.59	22.66
			1	24	22.79	22.69	22.70
			12	0	21.58	21.45	21.74
			12	6	21.57	21.44	21.72
			12	11	21.58	21.46	21.75
			25	0	21.53	21.52	21.73
		64QAM	1	0	22.18	21.89	21.65
			1	12	22.15	21.89	21.66
			1	24	22.10	21.97	21.84
			12	0	20.59	20.50	20.78
			12	6	20.58	20.48	20.76
			12	11	20.59	20.51	20.77
			25	0	20.54	20.47	20.70

LTE Band	Bandwidth (MHz)	Modulation	RB Size	RB Offset	Average Power (dBm)		
					23060	23095	23130
					704MHz	707.5MHz	711MHz
Band 12	10	QPSK	1	0	23.48	23.39	23.42
			1	24	23.44	23.46	23.61
			1	49	23.51	23.58	23.79
			25	0	22.46	22.40	22.47
			25	12	22.50	22.40	22.50
			25	24	22.51	22.40	22.49
			50	0	22.56	22.47	22.55
		16QAM	1	0	22.76	22.32	22.59
			1	24	22.68	22.40	22.77
			1	49	22.73	22.55	22.91
			25	0	21.55	21.45	21.49
			25	12	21.58	21.45	21.47
			25	24	21.58	21.44	21.47
			50	0	21.55	21.48	21.48
		64QAM	1	0	21.64	21.69	21.38
			1	24	21.53	21.89	21.56
			1	49	21.60	21.95	21.77
			25	0	20.54	20.38	20.51
			25	12	20.54	20.40	20.53
			25	24	20.53	20.40	20.52
			50	0	20.57	20.49	20.50

LTE Band 25 part:

LTE Band	Bandwidth (MHz)	Modulation	RB Size	RB Offset	Average Power (dBm)		
					26047	26365	26683
					1850.7	1882.5	1914.3
Band 25	1.4	QPSK	1	0	23.22	23.61	23.53
			1	2	23.20	23.56	23.47
			1	5	23.24	23.52	23.52
			3	0	23.25	23.61	23.59
			3	1	23.25	23.59	23.60
			3	2	23.24	23.53	23.62
			6	0	22.28	22.61	22.57
		16QAM	1	0	22.47	22.80	22.74
			1	2	22.49	22.81	22.78
			1	5	22.42	22.75	22.73
			3	0	22.20	22.51	22.52
			3	1	22.21	22.50	22.53
			3	2	22.16	22.42	22.49
			6	0	21.30	21.63	21.40
		64QAM	1	0	21.70	22.05	21.60
			1	2	21.70	22.04	21.58
			1	5	21.69	21.99	21.58
			3	0	21.29	21.62	21.37
			3	1	21.30	21.61	21.38
			3	2	21.31	21.59	21.33
			6	0	20.13	20.42	20.33

LTE Band	Bandwidth (MHz)	Modulation	RB Size	RB Offset	Average Power (dBm)		
					26055	26365	26675
					1851.5	1882.5	1913.5
Band 25	3	QPSK	1	0	23.20	23.58	23.53
			1	7	23.24	23.51	23.52
			1	14	23.22	23.45	23.51
			8	0	22.26	22.56	22.60
			8	4	22.23	22.55	22.59
			8	7	22.24	22.51	22.56
			15	0	22.22	22.51	22.56
		16QAM	1	0	22.51	22.74	22.81
			1	7	22.46	22.68	22.75
			1	14	22.40	22.61	22.72
			8	0	21.27	21.62	21.60
			8	4	21.28	21.60	21.57
			8	7	21.27	21.57	21.59
			15	0	21.18	21.51	21.51
		64QAM	1	0	21.31	21.46	21.58
			1	7	21.31	21.45	21.60
			1	14	21.34	21.40	21.56
			8	0	20.25	20.54	20.62
			8	4	20.25	20.56	20.63
			8	7	20.23	20.47	20.54
			15	0	20.18	20.61	20.51

LTE Band	Bandwidth (MHz)	Modulation	RB Size	RB Offset	Average Power (dBm)		
					26065	26365	26665
					1852.5	1882.5	1912.5
Band 25	5	QPSK	1	0	23.39	23.78	23.71
			1	12	23.41	23.72	23.73
			1	24	23.38	23.68	23.69
			12	0	22.29	22.63	22.65
			12	6	22.27	22.59	22.65
			12	11	22.25	22.57	22.46
			25	0	22.27	22.61	22.55
		16QAM	1	0	22.50	22.67	22.83
			1	12	22.54	22.62	22.84
			1	24	22.55	22.53	22.82
			12	0	21.32	21.60	21.69
			12	6	21.32	21.60	21.65
			12	11	21.28	21.51	21.47
			25	0	21.27	21.59	21.53
		64QAM	1	0	21.86	21.61	22.20
			1	12	21.88	21.55	22.20
			1	24	21.88	21.54	22.15
			12	0	20.29	20.57	20.69
			12	6	20.30	20.57	20.66
			12	11	20.25	20.51	20.49
			25	0	20.21	20.55	20.56

LTE Band	Bandwidth (MHz)	Modulation	RB Size	RB Offset	Average Power (dBm)		
					26090	26365	26640
					1855	1882.5	1910
Band 25	10	QPSK	1	0	23.20	23.64	23.54
			1	24	23.27	23.58	23.61
			1	49	23.33	23.45	23.52
			25	0	22.23	22.59	22.55
			25	12	22.23	22.60	22.54
			25	24	22.30	22.54	22.46
			50	0	22.33	22.60	22.54
		16QAM	1	0	22.12	22.76	22.77
			1	24	22.17	22.72	22.84
			1	49	22.25	22.60	22.70
			25	0	21.26	21.58	21.58
			25	12	21.27	21.58	21.56
			25	24	21.29	21.53	21.47
			50	0	21.30	21.57	21.52
		64QAM	1	0	21.47	21.50	21.57
			1	24	21.53	21.49	21.69
			1	49	21.52	21.38	21.58
			25	0	20.16	20.55	20.48
			25	12	20.16	20.55	20.49
			25	24	20.23	20.50	20.42
			50	0	20.24	20.50	20.49

LTE Band	Bandwidth (MHz)	Modulation	RB Size	RB Offset	Average Power (dBm)		
					26115	26365	26615
					1857.5	1882.5	1907.5
Band 25	15	QPSK	1	0	23.14	23.67	23.45
			1	37	23.32	23.60	23.60
			1	74	23.37	23.43	23.48
			36	0	21.41	21.57	21.70
			36	16	21.58	21.50	21.85
			36	35	21.66	21.33	21.71
			75	0	22.34	22.54	22.61
		16QAM	1	0	22.50	22.84	22.75
			1	37	22.68	22.76	22.94
			1	74	22.72	22.62	22.86
			36	0	21.44	21.56	21.72
			36	16	21.59	21.50	21.84
			36	35	21.62	21.35	21.73
			75	0	21.34	21.47	21.59
		64QAM	1	0	21.39	21.58	21.70
			1	37	21.58	21.49	21.85
			1	74	21.66	21.31	21.75
			36	0	21.41	21.53	21.71
			36	16	21.58	21.50	21.84
			36	35	21.66	21.34	21.74
			75	0	20.30	20.52	20.56

LTE Band	Bandwidth (MHz)	Modulation	RB Size	RB Offset	Average Power (dBm)		
					26140	26365	26590
					1860	1882.5	1905
Band 25	20	QPSK	1	0	23.16	23.82	23.47
			1	49	23.40	23.72	23.69
			1	99	23.55	23.56	23.54
			50	0	22.32	22.60	22.71
			50	24	22.35	22.63	22.72
			50	49	22.42	22.61	22.66
			100	0	22.36	22.54	22.71
		16QAM	1	0	22.44	22.79	22.66
			1	49	22.64	22.76	22.98
			1	99	22.75	22.57	22.88
			50	0	21.33	21.59	21.73
			50	24	21.32	21.56	21.72
			50	49	21.40	21.55	21.67
			100	0	21.32	21.52	21.66
		64QAM	1	0	21.54	22.12	21.78
			1	49	21.78	22.01	22.02
			1	99	21.85	21.87	21.90
			50	0	20.32	20.54	20.72
			50	24	20.32	20.57	20.72
			50	49	20.37	20.53	20.66
			100	0	20.36	20.48	20.66

LTE Band 26 part:

LTE Band	Bandwidth (MHz)	Modulation	RB Size	RB Offset	Average Power (dBm)		
					26697	26865	27033
					814.7MHz	831.5MHz	848.3MHz
Band 26	1.4	QPSK	1	0	23.66	23.33	23.70
			1	2	23.62	23.52	23.71
			1	5	23.67	23.57	23.64
			3	0	23.77	23.34	23.68
			3	1	23.76	23.47	23.70
			3	2	23.74	23.71	23.67
		16QAM	6	0	22.69	22.64	22.76
			1	0	22.87	22.41	22.70
			1	2	22.94	22.50	22.66
			1	5	22.88	22.62	22.59
			3	0	22.68	22.66	22.76
			3	1	22.66	22.36	22.75
		64QAM	3	2	22.66	22.28	22.68
			6	0	21.53	21.36	21.83
			1	0	21.73	21.56	22.08
			1	2	21.71	21.59	22.12
			1	5	21.71	21.74	22.02
			3	0	21.54	21.50	21.84
			3	1	21.52	21.41	21.82
			3	2	21.50	21.27	21.81
			6	0	20.43	20.57	20.70

LTE Band	Bandwidth (MHz)	Modulation	RB Size	RB Offset	Average Power (dBm)		
					26705	26865	27025
					815.5MHz	831.5MHz	847.5MHz
Band 26	3	QPSK	1	0	23.65	23.69	23.89
			1	7	23.63	23.31	23.77
			1	14	23.58	23.61	23.68
			8	0	22.69	22.71	22.77
			8	4	22.67	22.49	22.79
			8	7	22.63	22.52	22.72
			15	0	22.66	22.54	22.74
		16QAM	1	0	22.93	22.82	23.02
			1	7	22.83	22.86	22.95
			1	14	22.79	22.49	22.81
			8	0	21.70	21.77	21.87
			8	4	21.71	21.50	21.85
			8	7	21.67	21.55	21.79
		64QAM	15	0	21.60	21.47	21.81
			1	0	21.70	21.68	21.75
			1	7	21.71	21.34	21.70
			1	14	21.67	21.49	21.62
			8	0	20.68	20.70	20.80

			8	4	20.71	20.76	20.80
			8	7	20.64	20.43	20.71
			15	0	20.63	20.75	20.86

LTE Band	Bandwidth (MHz)	Modulation	RB Size	RB Offset	Average Power (dBm)		
					26715	26865	27015
					816.5MHz	831.5MHz	846.6MHz
Band 26	5	QPSK	1	0	23.97	23.71	23.98
			1	12	23.94	23.90	23.97
			1	24	23.90	23.66	23.89
			12	0	22.84	22.81	22.94
			12	6	22.83	22.70	22.93
			12	11	22.83	22.60	22.84
			25	0	22.83	22.58	22.93
		16QAM	1	0	22.77	22.51	22.90
			1	12	22.73	22.37	22.78
			1	24	22.78	22.73	22.72
			12	0	21.87	21.78	21.93
			12	6	21.85	21.84	21.93
			12	11	21.86	21.65	21.83
			25	0	21.84	21.73	21.94
		64QAM	1	0	21.79	21.81	21.92
			1	12	21.71	21.55	21.79
			1	24	21.79	21.39	21.70
			12	0	20.83	20.68	20.93
			12	6	20.85	20.58	20.94
			12	11	20.84	20.52	20.85
			25	0	20.80	20.58	20.87

LTE Band	Bandwidth (MHz)	Modulation	RB Size	RB Offset	Average Power (dBm)		
					26740	26865	26990
					819MHz	831.5MHz	844MHz
Band 26	10	QPSK	1	0	23.73	23.50	23.92
			1	24	23.73	23.45	23.91
			1	49	23.75	23.42	23.77
			25	0	22.75	22.79	23.01
			25	12	22.76	22.62	23.01
			25	24	22.73	22.40	22.82
			50	0	22.85	22.85	22.96
		16QAM	1	0	22.99	22.68	23.05
			1	24	22.95	22.84	23.05
			1	49	22.96	22.72	22.91
			25	0	21.81	21.50	21.99
			25	12	21.81	21.84	21.99
			25	24	21.80	21.49	21.80
			50	0	21.84	21.51	21.90
		64QAM	1	0	21.83	21.60	21.85
			1	24	21.80	21.67	21.88

			1	49	21.79	21.60	21.66
			25	0	20.75	20.87	21.01
			25	12	20.76	20.63	21.00
			25	24	20.73	20.56	20.80
			50	0	20.79	20.65	20.86

LTE Band	Bandwidth (MHz)	Modulation	RB Size	RB Offset	Average Power (dBm)		
					26765	26865	26965
					821.5MHz	831.5MHz	841.5MHz
Band 26	15	QPSK	1	0	23.68	23.59	23.88
			1	37	23.68	23.85	23.96
			1	74	23.71	23.91	23.73
			36	0	22.11	21.54	22.17
			36	16	22.27	21.80	22.27
			36	35	22.26	21.86	22.12
			75	0	22.83	22.83	22.86
		16QAM	1	0	22.62	22.75	22.78
			1	37	22.99	23.01	22.92
			1	74	22.85	23.08	22.69
			36	0	21.57	21.51	22.17
			36	16	21.80	21.80	22.27
			36	35	21.80	21.89	22.10
			75	0	21.73	21.78	21.85
		64QAM	1	0	21.34	21.54	22.13
			1	37	21.52	21.80	22.25
			1	74	21.40	21.84	22.11
			36	0	20.96	21.53	22.13
			36	16	21.00	21.79	22.25
			36	35	21.30	21.83	22.12
			75	0	20.80	20.78	20.84

LTE Band 41 part:

LTE Band	Band-width (MHz)	Modulation	RB Size	RB Offset	Average Power (dBm)				
					39675	40148	40620	41093	41565
					2498.5MHz	2545.5MHz	2593.0MHz	2640.3MHz	2687.5MHz
Band 41	5	QPSK	1	0	24.34	24.13	24.44	24.23	23.92
			1	12	24.39	24.14	24.45	24.24	23.88
			1	24	24.42	24.16	24.44	24.25	23.89
			12	0	23.19	23.04	23.35	23.14	22.89
			12	6	23.19	23.06	23.39	23.17	22.92
			12	11	23.19	23.04	23.45	23.17	22.88
		16QAM	25	0	23.28	23.10	23.33	23.18	22.92
			1	0	23.50	23.32	23.70	23.45	23.14
			1	12	23.56	23.37	23.75	23.50	23.18
			1	24	23.62	23.40	23.69	23.49	23.17
			12	0	22.20	22.06	22.37	22.16	21.92
			12	6	22.20	22.06	22.39	22.17	21.91
		64QAM	12	11	22.18	22.05	22.41	22.17	21.91
			25	0	22.25	22.09	22.41	22.19	21.92
			1	0	22.56	22.48	22.71	22.55	22.39
			1	12	22.60	22.53	22.79	22.61	22.45
			1	24	22.63	22.55	22.72	22.61	22.47
			12	0	21.17	21.06	21.41	21.18	20.95
			12	6	21.18	21.09	21.30	21.16	21.00
			12	11	21.20	21.10	21.40	21.20	20.99
			25	0	21.25	21.04	21.36	21.15	20.83

LTE Band	Band-width (MHz)	Modulation	RB Size	RB Offset	Average Power (dBm)				
					39700	40160	40620	41080	41540
					2501.0MHz	2547.0MHz	2593.0MHz	2639.0MHz	2685.0MHz
Band 41	10	QPSK	1	0	24.16	24.00	24.31	24.10	23.84
			1	24	24.32	24.12	24.39	24.21	23.91
			1	49	24.31	24.11	24.31	24.18	23.91
			25	0	23.24	23.01	23.36	23.12	22.77
			25	12	23.24	23.03	23.37	23.14	22.81
			25	24	23.25	23.03	23.34	23.13	22.81
			50	0	23.25	23.07	23.45	23.19	22.88
		16QAM	1	0	23.11	22.93	23.68	23.18	22.74
			1	24	23.21	23.03	23.75	23.27	22.84
			1	49	23.26	23.03	23.65	23.23	22.79
			25	0	22.22	22.02	22.49	22.18	21.82
			25	12	22.24	22.03	22.44	22.17	21.82
			25	24	22.24	22.02	22.53	22.19	21.79
			50	0	22.27	22.07	22.37	22.17	21.86
		64QAM	1	0	22.10	21.91	22.83	22.22	21.72
			1	24	22.24	22.05	22.77	22.29	21.85
			1	49	22.26	22.03	22.71	22.26	21.80
			25	0	21.07	20.87	21.42	21.05	20.67
			25	12	21.09	20.90	21.37	21.05	20.70
			25	24	21.06	20.86	21.32	21.01	20.65
			50	0	21.17	20.96	21.34	21.08	20.74

LTE Band	Band-width (MHz)	Modulation	RB Size	RB Offset	Average Power (dBm)				
					39725	40173	40620	41068	41515
					2503.5MHz	2548.5MHz	2593.0MHz	2637.8MHz	2682.5MHz
Band 41	15	QPSK	1	0	24.15	23.98	24.25	24.07	23.81
			1	37	24.34	24.12	24.37	24.20	23.89
			1	74	24.37	24.17	24.19	24.17	23.96
			36	0	23.15	22.96	23.31	23.08	22.77
			36	16	23.14	22.94	23.38	23.08	22.73
			36	35	23.14	22.94	23.42	23.10	22.73
			75	0	23.21	23.01	23.34	23.12	22.81
		16QAM	1	0	23.11	22.95	23.65	23.18	22.78
			1	37	23.28	23.08	23.69	23.28	22.88
			1	74	23.33	23.14	23.59	23.29	22.94
			36	0	22.13	21.92	22.42	22.09	21.71
			36	16	22.11	21.93	22.32	22.06	21.75
			36	35	22.15	21.95	22.34	22.08	21.74
			75	0	22.17	22.00	22.31	22.10	21.83
		64QAM	1	0	22.42	22.26	22.77	22.43	22.09
			1	37	22.58	22.39	22.78	22.52	22.19
			1	74	22.65	22.44	22.67	22.51	22.22
			36	0	21.11	20.92	21.38	21.07	20.72
			36	16	21.10	20.93	21.43	21.09	20.75
			36	35	21.11	20.93	21.32	21.06	20.74
			75	0	21.15	20.98	21.28	21.08	20.80

LTE Band	Band-width (MHz)	Modulation	RB Size	RB Offset	Average Power (dBm)				
					39750	40185	40620	41055	41490
					2506.0MHz	2549.5MHz	2593.0MHz	2636.5MHz	2680.0MHz
Band 41	20	QPSK	1	0	24.01	23.85	24.33	24.01	23.69
			1	49	24.29	24.06	24.34	24.15	23.83
			1	99	24.32	24.10	24.19	24.13	23.88
			50	0	23.19	22.95	23.42	23.11	22.71
			50	24	23.21	22.97	23.47	23.14	22.73
			50	49	23.21	22.96	23.45	23.12	22.71
			100	0	23.28	23.06	23.30	23.14	22.84
		16QAM	1	0	22.69	22.54	23.42	22.83	22.38
			1	49	22.96	22.73	23.55	23.00	22.49
			1	99	22.99	22.76	23.34	22.95	22.52
			50	0	22.26	22.01	22.38	22.13	21.75
			50	24	22.26	22.02	22.46	22.17	21.78
			50	49	22.27	22.01	22.47	22.16	21.74
			100	0	22.26	22.04	22.26	22.11	21.81
		64QAM	1	0	22.11	21.94	22.50	22.12	21.76
			1	49	22.40	22.16	22.61	22.31	21.91
			1	99	22.39	22.16	22.29	22.20	21.92
			50	0	21.24	21.03	21.41	21.15	20.81
			50	24	21.25	21.03	21.40	21.15	20.81
			50	49	21.25	21.04	21.38	21.15	20.83
			100	0	21.24	21.01	21.29	21.10	20.78

Note:

1. Per KDB 447498 D01v06 section 4.1., the required test channels number is 5 for LTE Band 41.

LTE Band 66 part:

LTE Band	Bandwidth (MHz)	Modulation	RB Size	RB Offset	Average Power (dBm)		
					131979	132322	132665
					1710.70MHz	1745.00MHz	1779.3MHz
Band 66	1.4	QPSK	1	0	23.68	23.51	23.36
			1	2	23.68	23.52	23.31
			1	5	23.71	23.53	23.29
			3	0	23.76	23.54	23.31
			3	1	23.74	23.54	23.30
			3	2	23.75	23.58	23.32
		16QAM	6	0	22.76	22.55	22.37
			1	0	22.94	22.75	22.26
			1	2	22.95	22.78	22.28
			1	5	22.90	22.78	22.26
			3	0	22.67	22.46	22.32
			3	1	22.66	22.44	22.32
		64QAM	3	2	22.67	22.49	22.33
			6	0	21.80	21.40	21.37
			1	0	22.16	21.61	21.58
			1	2	22.17	21.60	21.62
			1	5	22.15	21.62	21.57
			3	0	21.73	21.35	21.43
			3	1	21.71	21.36	21.42
			3	2	21.75	21.35	21.43
			6	0	20.56	20.45	20.24

LTE Band	Bandwidth (MHz)	Modulation	RB Size	RB Offset	Average Power (dBm)		
					131987	132322	132657
					1711.50MHz	1745.00MHz	1778.50MHz
Band 66	3	QPSK	1	0	23.70	23.48	23.37
			1	7	23.73	23.50	23.43
			1	14	23.72	23.49	23.45
			8	0	22.72	22.54	22.34
			8	4	22.71	22.55	22.38
			8	7	22.71	22.52	22.37
			15	0	22.75	22.50	22.37
		16QAM	1	0	22.95	22.40	22.53
			1	7	22.93	22.44	22.53
			1	14	22.94	22.47	22.55
			8	0	21.77	21.57	21.41
			8	4	21.75	21.55	21.42
			8	7	21.78	21.59	21.44
			15	0	21.67	21.42	21.38
		64QAM	1	0	21.75	21.75	21.24
			1	7	21.79	21.86	21.31
			1	14	21.79	21.82	21.29
			8	0	20.75	20.66	20.37
			8	4	20.75	20.68	20.33
			8	7	20.72	20.66	20.34
			15	0	20.71	20.60	20.44

LTE Band	Bandwidth (MHz)	Modulation	RB Size	RB Offset	Average Power (dBm)		
					131997	132322	132647
					1712.50MHz	1745.00MHz	1777.50MHz
Band 66	5	QPSK	1	0	23.88	23.70	23.48
			1	12	23.95	23.73	23.51
			1	24	23.93	23.77	23.53
			12	0	22.75	22.56	22.38
			12	6	22.81	22.55	22.40
			12	11	22.78	22.56	22.40
			25	0	22.77	22.56	22.41
		16QAM	1	0	22.85	22.56	22.60
			1	12	22.87	22.56	22.65
			1	24	22.86	22.61	22.71
			12	0	21.80	21.54	21.45
			12	6	21.81	21.50	21.44
			12	11	21.79	21.56	21.44
			25	0	21.78	21.55	21.34
		64QAM	1	0	22.13	21.55	21.99
			1	12	22.15	21.56	21.98
			1	24	22.14	21.60	22.00
			12	0	20.76	20.68	20.43
			12	6	20.76	20.70	20.44
			12	11	20.77	20.71	20.45
			25	0	20.73	20.67	20.41

LTE Band	Bandwidth (MHz)	Modulation	RB Size	RB Offset	Average Power (dBm)		
					132022	132322	132622
					1715.00MHz	1745.00MHz	1775.00MHz
Band 66	10	QPSK	1	0	23.66	23.45	23.43
			1	24	23.78	23.56	23.43
			1	49	23.83	23.51	23.41
			25	0	22.77	22.48	22.44
			25	12	22.76	22.48	22.41
			25	24	22.77	22.47	22.44
			50	0	22.85	22.59	22.45
		16QAM	1	0	22.88	22.38	22.59
			1	24	22.96	22.45	22.54
			1	49	23.01	22.49	22.56
			25	0	21.80	21.52	21.41
			25	12	21.78	21.52	21.41
			25	24	21.79	21.52	21.42
			50	0	21.82	21.58	21.38
		64QAM	1	0	21.76	21.75	21.31
			1	24	21.86	21.89	21.32
			1	49	21.89	21.88	21.33
			25	0	20.73	20.58	20.41
			25	12	20.72	20.57	20.41
			25	24	20.73	20.58	20.39
			50	0	20.79	20.65	20.34

LTE Band	Bandwidth (MHz)	Modulation	RB Size	RB Offset	Average Power (dBm)		
					132047	132322	132597
					1717.50MHz	1745.00MHz	1772.50MHz
Band 66	15	QPSK	1	0	23.58	23.46	23.45
			1	37	23.83	23.52	23.47
			1	74	23.67	23.58	23.40
			36	0	22.78	22.49	22.40
			36	16	22.77	22.47	22.43
			36	35	22.77	22.48	22.43
			75	0	22.80	22.55	22.46
		16QAM	1	0	22.92	22.36	22.62
			1	37	23.17	22.53	22.63
			1	74	23.07	22.52	22.58
			36	0	21.82	21.42	21.38
			36	16	21.80	21.40	21.39
			36	35	21.82	21.40	21.44
			75	0	21.82	21.58	21.41
		64QAM	1	0	21.78	21.71	21.38
			1	37	22.03	21.87	21.37
			1	74	21.94	21.89	21.31
			36	0	20.72	20.61	20.43
			36	16	20.73	20.62	20.44
			36	35	20.77	20.61	20.43
			75	0	20.78	20.69	20.41

LTE Band	Bandwidth (MHz)	Modulation	RB Size	RB Offset	Average Power (dBm)		
					132072	132322	132572
					1720.00MHz	1745.00MHz	1770.00MHz
Band 66	20	QPSK	1	0	23.61	23.34	23.65
			1	49	23.88	23.46	23.59
			1	99	23.64	23.51	23.52
			50	0	22.81	22.44	22.50
			50	24	22.81	22.45	22.49
			50	49	22.78	22.45	22.50
			100	0	22.78	22.53	22.46
		16QAM	1	0	22.86	22.42	22.56
			1	49	23.15	22.66	22.60
			1	99	22.94	22.69	22.44
			50	0	21.79	21.46	21.46
			50	24	21.82	21.45	21.47
			50	49	21.81	21.45	21.48
			100	0	21.79	21.52	21.39
		64QAM	1	0	22.00	21.30	21.89
			1	49	22.21	21.50	21.85
			1	99	21.99	21.56	21.74
			50	0	20.79	20.58	20.46
			50	24	20.80	20.54	20.47
			50	49	20.80	20.58	20.47
			100	0	20.77	20.66	20.35

13.4 WLAN 2.4 GHz Band Conducted Power

ANT 7

Average Power (dBm)				
Channel	Frequency (MHz)	802.11 b	802.11 g	802.11n (HT20)
CH 01	2412	16.28	14.82	11.56
CH 06	2437	16.93	15.19	11.96
CH 11	2462	16.16	14.94	11.58

Average Power (dBm)		
Channel	Frequency (MHz)	802.11n (HT40)
CH 03	2422	11.29
CH 06	2437	11.81
CH 09	2452	12.34

ANT 6

Average Power (dBm)				
Channel	Frequency (MHz)	802.11 b	802.11 g	802.11n (HT20)
CH 01	2412	16.94	14.91	12.11
CH 06	2437	17.34	15.67	12.23
CH 11	2462	17.64	16.10	12.71

Average Power (dBm)		
Channel	Frequency (MHz)	802.11n (HT40)
CH 03	2422	12.06
CH 06	2437	12.35
CH 09	2452	12.74

Note:

- Per KDB 248227 D01v02r02, choose the highest output power channel to test SAR and determine further SAR exclusion.
- Per KDB 248227 D01v02r02, In the 2.4 GHz band, separate SAR procedures are applied to DSSS and OFDM configurations to simplify DSSS test requirements. SAR is not required for the following 2.4 GHz OFDM conditions:
 - When KDB Publication 447498 SAR test exclusion applies to the OFDM configuration.
 - When the highest reported SAR for DSSS is adjusted by the ratio of OFDM to DSSS specified maximum output power and the adjusted SAR is ≤ 1.2 W/kg.
- The output power of all data rate were pre-scan, just the worst case (the lowest data rate) of all mode were shown in report.
- Per KDB 248227 D01V02r02 section 2.2, when the EUT in continuously transmitting mode, the actual duty cycle is 100%, so the duty cycle factor is 1.

13.5 WLAN 5.2GHz Band Conducted Power

ANT7

Average Power (dBm)					
Channel	Frequency (MHz)	802.11 a	802.11 ac20	802.11 ax20	802.11 n20
CH 36	5180	12.15	7.03	7.12	8.06
CH 40	5200	12.43	7.52	7.62	8.22
CH 48	5240	13.16	8.18	8.22	8.91

Average Power (dBm)				
Channel	Frequency (MHz)	802.11 ac40	802.11 ax40	802.11 n40
CH 38	5190	7.04	7.29	8.20
CH 46	5230	8.23	8.34	8.40

Average Power (dBm)			
Channel	Frequency (MHz)	802.11 ac80	802.11 ax80
CH 42	5210	7.47	7.74

ANT6

Average Power (dBm)					
Channel	Frequency (MHz)	802.11 a	802.11 ac20	802.11 ax20	802.11 n20
CH 36	5180	12.86	9.10	9.10	9.94
CH 40	5200	13.62	9.42	9.61	10.39
CH 48	5240	14.43	10.22	10.43	10.92

Average Power (dBm)				
Channel	Frequency (MHz)	802.11 ac40	802.11 ax40	802.11 n40
CH 38	5190	9.07	9.29	10.21
CH 46	5230	10.31	10.59	10.40

Average Power (dBm)			
Channel	Frequency (MHz)	802.11 ac80	802.11 ax80
CH 42	5210	9.44	9.65

Note:

1. Per KDB 248227 D01v02r02, choose the highest output power channel to test SAR and determine further SAR exclusion.
2. The output power of all data rate were pre-scan, just the worst case (the lowest data rate) of all mode were shown in report.
3. Per 2016-10-12-4.3 RF Exposure General Issues 101216 - KC,, the maximum permissible duty cycle of this device determined by the handset manufacturer is 100%, the actual duty cycle is 100%, so the duty cycle factor is 1.

13.6 WLAN 5.8GHz Band Conducted Power

Average Power (dBm)					
Channel	Frequency (MHz)	802.11 a	802.11 ac20	802.11 ax20	802.11 n20
CH 149	5745	13.65	8.05	8.15	8.04
CH 157	5785	13.80	7.96	7.96	8.10
CH 165	5825	13.35	7.38	7.57	7.55

Average Power (dBm)				
Channel	Frequency (MHz)	802.11 ac40	802.11 ax40	802.11 n40
CH 151	5755	7.49	7.42	7.11
CH 159	5795	8.27	8.00	7.81

Average Power (dBm)			
Channel	Frequency (MHz)	802.11 ac80	802.11 ax80
CH 155	5775	7.03	7.52

Average Power (dBm)					
Channel	Frequency (MHz)	802.11 a	802.11 ac20	802.11 ax20	802.11 n20
CH 149	5745	14.19	10.73	10.85	10.76
CH 157	5785	14.25	11.05	11.13	11.20
CH 165	5825	14.93	11.23	11.47	11.30

Average Power (dBm)				
Channel	Frequency (MHz)	802.11 ac40	802.11 ax40	802.11 n40
CH 151	5755	10.39	10.28	10.09
CH 159	5795	10.89	10.78	10.53

Average Power (dBm)			
Channel	Frequency (MHz)	802.11 ac80	802.11 ax80
CH 155	5775	10.01	10.49

Note:

- Per KDB 248227 D01v02r02, choose the highest output power channel to test SAR and determine further SAR exclusion.
- The output power of all data rate were pre-scan, just the worst case (the lowest data rate) of all mode were shown in report.
Per 2016-10-12-4.3 RF Exposure General Issues 101216 - KC., the maximum permissible duty cycle of this device determined by the handset manufacturer is 100%, the actual duty cycle is 100%, so the duty cycle factor is 1.

13.7 Bluetooth Conducted Power

Average Power (dBm)				
Channel	Frequency (MHz)	GFSK	$\pi/4$ -DQPSK	8DPSK
CH 00	2402	5.34	4.91	5.17
CH 39	2441	5.57	5.18	5.49
CH 78	2480	4.47	4.16	4.58

Average Power (dBm)					
Channel	Frequency (MHz)	BLE PHY 1M	BLE PHY 2M	BLE Coded PHY S=2	BLE Coded PHY S=8
CH 00	2402	5.19	5.00	5.23	5.24
CH 20	2442	5.93	5.30	5.82	5.92
CH 39	2480	4.63	4.86	4.77	4.84

Note:

1. The max. tune-up power was provided by manufacturer, based on the result of note 1, RF exposure evaluation is not required.
2. The output power of all data rates were pre-scan, just the worst case of all modes were shown in report.
3. When the minimum *test separation distance* is < 5 mm, a distance of 5 mm according is applied to determine SAR test exclusion.

13.8 NFC Conducted Power

Average Power (dBm)	
Frequency (MHz)	ASK
13.56	-73.59

Note:

1. Per KDB 447498 D01v06 section 4.3 Test Exemption, $P_{th} = 1 + \log(100/f_{MHz}) = 1.87mW = 2.72dBm$, $P_{NFC} = -73.59dBm < P_{th}$, SAR test for NFC is not required.
2. The output power of all data rates were pre-scan, just the worst case of all modes were shown in report.

14 Exposure Positions Consideration

14.1 EUT Antenna Locations

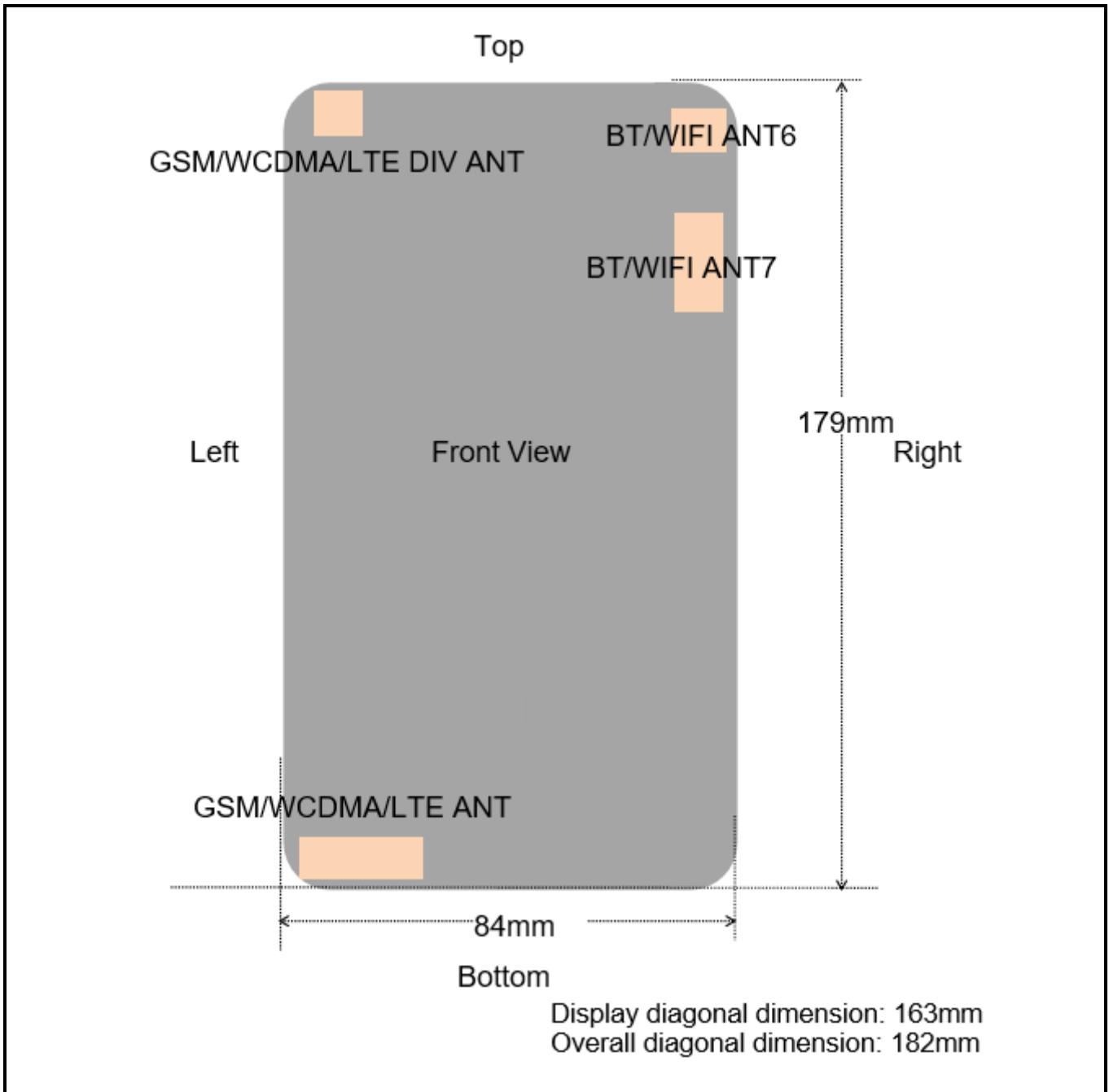


Fig.14.1 EUT Antenna Locations

Note: This antenna diagram is only used as a reference for the distance from the antenna to each edge. For the specific shape of the antenna, please refer to the physical photo.

14.2 Test Positions Consideration

Distance of Antennas to EUT edge/surface Test distance: 10mm						
Antennas	Back	Front	Top Side	Bottom Side	Right Side	Left Side
2G/3G/4G ANT	<25mm	<25mm	<25mm	<25mm	47mm	<25mm
WLAN & Bluetooth ANT7	<25mm	<25mm	31mm	125mm	<25mm	72mm
WLAN ANT6	<25mm	<25mm	<25mm	152mm	<25mm	67mm

Test Positions Test distance: 10mm						
Antennas	Back	Front	Top Side	Bottom Side	Right Side	Left Side
2G/3G/4G ANT	Yes	Yes	Yes	Yes	Yes	Yes
WLAN & Bluetooth ANT7	Yes	Yes	No	No	Yes	No
WLAN ANT6	Yes	Yes	Yes	No	Yes	No

Note:

1. Head/Body-worn/Hotspot mode SAR assessments are required.
2. Referring to KDB 941225 D06 v02r01, when the overall device length and width are $\geq 9\text{cm} * 5\text{cm}$, the test distance is 10mm. SAR must be measured for all sides and surfaces with a transmitting antenna located within 25mm from that surface or edge.
3. Per KDB 447498 D01v06, for handsets the test separation distance is determined by the smallest distance between the outer surface of the device and the user, which is 0 mm for head SAR, 10 mm for hotspot SAR, and 10 mm for body-worn SAR.

15 SAR Test Results Summary

15.1 Standalone Head SAR Data

➤ GSM Head SAR

Plot No.	Band/Mode	Test Position	CH.	Freq. (MHz)	Ave. Power (dBm)	Power Drift (dB)	Tune-Up Limit (dBm)	Meas. SAR _{1g} (W/kg)	Scaling Factor	Reported SAR _{1g} (W/kg)
1	GSM850/Voice	Right Cheek	190	836.6	32.80	0.08	33.0	0.135	1.047	0.141
	GSM850/Voice	Right Tilted	190	836.6	32.80	0.14	33.0	0.062	1.047	0.065
	GSM850/Voice	Left Cheek	190	836.6	32.80	-0.02	33.0	0.104	1.047	0.109
	GSM850/Voice	Left Tilted	190	836.6	32.80	0.09	33.0	0.049	1.047	0.051
	PCS1900/Voice	Right Cheek	661	1880	30.12	0.17	30.5	0.079	1.091	0.086
	PCS1900/Voice	Right Tilted	661	1880	30.12	0.01	30.5	0.021	1.091	0.023
2	PCS1900/Voice	Left Cheek	661	1880	30.12	0.12	30.5	0.144	1.091	0.157
	PCS1900/Voice	Left Tilted	661	1880	30.12	0.15	30.5	0.035	1.091	0.038
ANSI / IEEE C95.1 – SAFETY LIMIT Spatial Peak Uncontrolled Exposure/General Population					1.6 W/kg (mW/g) Averaged over 1g					

➤ WCDMA Head SAR

Plot No.	Band/Mode	Test Position	CH.	Freq. (MHz)	Ave. Power (dBm)	Power Drift (dB)	Tune-Up Limit (dBm)	Meas. SAR _{1g} (W/kg)	Scaling Factor	Reported SAR _{1g} (W/kg)
	Band II/RMC	Right Cheek	9400	1880	24.13	-0.01	24.5	0.201	1.089	0.219
	Band II/RMC	Right Tilted	9400	1880	24.13	-0.07	24.5	0.055	1.089	0.060
3	Band II/RMC	Left Cheek	9400	1880	24.13	0.02	24.5	0.319	1.089	0.347
	Band II/RMC	Left Tilted	9400	1880	24.13	0.08	24.5	0.067	1.089	0.073
	Band IV/RMC	Right Cheek	1312	1712.4	23.53	-0.12	24.0	0.069	1.114	0.077
	Band IV/RMC	Right Tilted	1312	1712.4	23.53	-0.16	24.0	0.020	1.114	0.022
4	Band IV/RMC	Left Cheek	1312	1712.4	23.53	0.07	24.0	0.134	1.114	0.149
	Band IV/RMC	Left Tilted	1312	1712.4	23.53	-0.05	24.0	0.046	1.114	0.051
5	Band V/RMC	Right Cheek	4183	836.6	23.91	0.02	24.0	0.230	1.021	0.235
	Band V/RMC	Right Tilted	4183	836.6	23.91	-0.18	24.0	0.103	1.021	0.105
	Band V/RMC	Left Cheek	4183	836.6	23.91	-0.05	24.0	0.201	1.021	0.205
	Band V/RMC	Left Tilted	4183	836.6	23.91	-0.11	24.0	0.089	1.021	0.091
ANSI / IEEE C95.1 – SAFETY LIMIT Spatial Peak Uncontrolled Exposure/General Population					1.6 W/kg (mW/g) Averaged over 1g					

➤ FDD-LTE Band 7(20MHz) QPSK Head SAR

Plot No.	Band/Mode	Test Position	CH.	Freq. (MHz)	Ave. Power (dBm)	Power Drift (dB)	Tune-Up Limit (dBm)	Meas. SAR _{1g} (W/kg)	Scaling Factor	Reported SAR _{1g} (W/kg)
	Band7/1RB#49	Right Cheek	21350	2560	24.00	-0.01	24.5	0.036	1.122	0.040
	Band7/1RB#49	Right Tilted	21350	2560	24.00	-0.09	24.5	0.011	1.122	0.012
6	Band7/1RB#49	Left Cheek	21350	2560	24.00	0.00	24.5	0.054	1.122	0.061
	Band7/1RB#49	Left Tilted	21350	2560	24.00	0.18	24.5	0.016	1.122	0.018
	Band7/50%RB#49	Right Cheek	21350	2560	23.47	-0.09	24.0	0.031	1.13	0.035
	Band7/50%RB#49	Right Tilted	21350	2560	23.47	0.06	24.0	0.008	1.13	0.009
	Band7/50%RB#49	Left Cheek	21350	2560	23.47	0.09	24.0	0.048	1.13	0.054
	Band7/50%RB#49	Left Tilted	21350	2560	23.47	-0.05	24.0	0.012	1.13	0.014
ANSI / IEEE C95.1 – SAFETY LIMIT Spatial Peak Uncontrolled Exposure/General Population					1.6 W/kg (mW/g) Averaged over 1g					

➤ FDD-LTE Band 12(10MHz) QPSK Head SAR

Plot No.	Band/Mode	Test Position	CH.	Freq. (MHz)	Ave. Power (dBm)	Power Drift (dB)	Tune-Up Limit (dBm)	Meas. SAR _{1g} (W/kg)	Scaling Factor	Reported SAR _{1g} (W/kg)
7	Band12/1RB#49	Right Cheek	23130	711	23.79	0.00	24.0	0.119	1.05	0.125
	Band12/1RB#49	Right Tilted	23130	711	23.79	0.02	24.0	0.041	1.05	0.043
	Band12/1RB#49	Left Cheek	23130	711	23.79	-0.10	24.0	0.106	1.05	0.111
	Band12/1RB#49	Left Tilted	23130	711	23.79	-0.12	24.0	0.035	1.05	0.037
	Band12/50%RB#24	Right Cheek	23060	704	22.51	-0.16	23.0	0.111	1.119	0.124
	Band12/50%RB#24	Right Tilted	23060	704	22.51	-0.18	23.0	0.036	1.119	0.040
	Band12/50%RB#24	Left Cheek	23060	704	22.51	-0.16	23.0	0.101	1.119	0.113
	Band12/50%RB#24	Left Tilted	23060	704	22.51	0.09	23.0	0.024	1.119	0.027
ANSI / IEEE C95.1 – SAFETY LIMIT Spatial Peak Uncontrolled Exposure/General Population					1.6 W/kg (mW/g) Averaged over 1g					

➤ FDD-LTE Band 25(20MHz) QPSK Head SAR

Plot No.	Band/Mode	Test Position	CH.	Freq. (MHz)	Ave. Power (dBm)	Power Drift (dB)	Tune-Up Limit (dBm)	Meas. SAR _{1g} (W/kg)	Scaling Factor	Reported SAR _{1g} (W/kg)
	Band25/1RB#0	Right Cheek	26365	1882.5	23.82	-0.13	24.0	0.287	1.042	0.299
	Band25/1RB#0	Right Tilted	26365	1882.5	23.82	0.07	24.0	0.103	1.042	0.107
8	Band25/1RB#0	Left Cheek	26365	1882.5	23.82	0.00	24.0	0.322	1.042	0.336
	Band25/1RB#0	Left Tilted	26365	1882.5	23.82	0.08	24.0	0.124	1.042	0.129
	Band25/50%RB#24	Right Cheek	26590	1905	22.72	-0.08	23.0	0.248	1.067	0.265
	Band25/50%RB#24	Right Tilted	26590	1905	22.72	-0.02	23.0	0.088	1.067	0.094
	Band25/50%RB#24	Left Cheek	26590	1905	22.72	0.10	23.0	0.310	1.067	0.331
	Band25/50%RB#24	Left Tilted	26590	1905	22.72	-0.13	23.0	0.103	1.067	0.110
ANSI / IEEE C95.1 – SAFETY LIMIT Spatial Peak Uncontrolled Exposure/General Population					1.6 W/kg (mW/g) Averaged over 1g					

➤ FDD-LTE Band 26(15MHz) QPSK Head SAR

Plot No.	Band/Mode	Test Position	CH.	Freq. (MHz)	Ave. Power (dBm)	Power Drift (dB)	Tune-Up Limit (dBm)	Meas. SAR _{1g} (W/kg)	Scaling Factor	Reported SAR _{1g} (W/kg)
9	Band26/1RB#37	Right Cheek	26965	841.5	23.96	0.08	24.5	0.161	1.132	0.182
	Band26/1RB#37	Right Tilted	26965	841.5	23.96	-0.18	24.5	0.089	1.132	0.101
	Band26/1RB#37	Left Cheek	26965	841.5	23.96	0.05	24.5	0.143	1.132	0.162
	Band26/1RB#37	Left Tilted	26965	841.5	23.96	-0.18	24.5	0.074	1.132	0.084
Band26/50%RB#16	Right Cheek	26965	841.5	22.27	0.14	22.5	0.152	1.054	0.160	
	Right Tilted	26965	841.5	22.27	0.00	22.5	0.072	1.054	0.076	
	Left Cheek	26965	841.5	22.27	0.18	22.5	0.133	1.054	0.140	
	Left Tilted	26965	841.5	22.27	0.16	22.5	0.059	1.054	0.062	
ANSI / IEEE C95.1 – SAFETY LIMIT Spatial Peak Uncontrolled Exposure/General Population							1.6 W/kg (mW/g) Averaged over 1g			

➤ TDD-LTE Band41(20MHz) QPSK Head SAR

Plot No.	Band/Mode	Test Position	CH.	Freq. (MHz)	Ave. Power (dBm)	Power Drift (dB)	Tune-Up Limit (dBm)	Meas. SAR _{1g} (W/kg)	Scaling Factor	D.C Factor	Reported SAR _{1g} (W/kg)
10	Band41/1RB#49	Right Cheek	40620	2593	24.34	-0.09	24.5	0.055	1.038	1.008	0.058
	Band41/1RB#49	Right Tilted	40620	2593	24.34	0.00	24.5	0.023	1.038	1.008	0.024
	Band41/1RB#49	Left Cheek	40620	2593	24.34	0.00	24.5	0.063	1.038	1.008	0.066
	Band41/1RB#49	Left Tilted	40620	2593	24.34	0.17	24.5	0.028	1.038	1.008	0.029
	Band41/50%RB#24	Right Cheek	40620	2593	23.47	0.20	23.5	0.049	1.007	1.008	0.050
	Band41/50%RB#24	Right Tilted	40620	2593	23.47	0.01	23.5	0.018	1.007	1.008	0.018
	Band41/50%RB#24	Left Cheek	40620	2593	23.47	-0.20	23.5	0.051	1.007	1.008	0.052
	Band41/50%RB#24	Left Tilted	40620	2593	23.47	-0.11	23.5	0.023	1.007	1.008	0.023
ANSI / IEEE C95.1 – SAFETY LIMIT Spatial Peak Uncontrolled Exposure/General Population							1.6 W/kg (mW/g) Averaged over 1g				

➤ FDD-LTE Band 66(20MHz) QPSK Head SAR

Plot No.	Band/Mode	Test Position	CH.	Freq. (MHz)	Ave. Power (dBm)	Power Drift (dB)	Tune-Up Limit (dBm)	Meas. SAR _{1g} (W/kg)	Scaling Factor	Reported SAR _{1g} (W/kg)
11	Band66/1RB#0	Right Cheek	132072	1720	23.88	0.14	24.0	0.149	1.028	0.153
	Band66/1RB#0	Right Tilted	132072	1720	23.88	0.06	24.0	0.065	1.028	0.067
	Band66/1RB#0	Left Cheek	132072	1720	23.88	0.05	24.0	0.179	1.028	0.184
	Band66/1RB#0	Left Tilted	132072	1720	23.88	0.15	24.0	0.068	1.028	0.070
	Band66/50%RB#0	Right Cheek	132072	1720	22.81	0.10	23.0	0.135	1.045	0.141
	Band66/50%RB#0	Right Tilted	132072	1720	22.81	0.15	23.0	0.058	1.045	0.061
	Band66/50%RB#0	Left Cheek	132072	1720	22.81	-0.08	23.0	0.158	1.045	0.165
	Band66/50%RB#0	Left Tilted	132072	1720	22.81	0.04	23.0	0.048	1.045	0.050
ANSI / IEEE C95.1 – SAFETY LIMIT Spatial Peak Uncontrolled Exposure/General Population							1.6 W/kg (mW/g) Averaged over 1g			

➤ WLAN 2.4 GHz Head SAR

Plot No.	Band/Mode	Test Position	ANT	CH.	Freq. (MHz)	Ave. Power (dBm)	Power Drift (dB)	Tune-Up Limit (dBm)	Meas. SAR _{1g} (W/kg)	Scaling Factor	D.C Factor	Reported SAR _{1g} (W/kg)
	2.4GHz/802.11b	Right Cheek	7	6	2437	16.93	-0.08	17.0	0.251	1.016	1.000	0.255
	2.4GHz/802.11b	Right Tilted	7	6	2437	16.93	-0.02	17.0	0.158	1.016	1.000	0.161
12	2.4GHz/802.11b	Left Cheek	7	6	2437	16.93	-0.02	17.0	0.709	1.016	1.000	0.720
	2.4GHz/802.11b	Left Tilted	7	6	2437	16.93	0.00	17.0	0.570	1.016	1.000	0.579
	2.4GHz/802.11b	Right Cheek	6	11	2462	17.64	-0.06	18.0	0.191	1.086	1.000	0.207
	2.4GHz/802.11b	Right Tilted	6	11	2462	17.64	-0.08	18.0	0.103	1.086	1.000	0.112
	2.4GHz/802.11b	Left Cheek	6	11	2462	17.64	-0.04	18.0	0.327	1.086	1.000	0.355
	2.4GHz/802.11b	Left Tilted	6	11	2462	17.64	0.11	18.0	0.231	1.086	1.000	0.251
ANSI / IEEE C95.1 – SAFETY LIMIT						1.6 W/kg (mW/g)						
Spatial Peak						Averaged over 1g						
Uncontrolled Exposure/General Population												

➤ WLAN 5.2 GHz Head SAR

Plot No.	Band/Mode	Test Position	ANT	CH.	Freq. (MHz)	Ave. Power (dBm)	Power Drift (dB)	Tune-Up Limit (dBm)	Meas. SAR _{1g} (W/kg)	Scaling Factor	D.C Factor	Reported SAR _{1g} (W/kg)
	5.2GHz/802.11a	Right Cheek	7	48	5240	13.16	-0.12	13.5	0.097	1.081	1.000	0.105
	5.2GHz/802.11a	Right Tilted	7	48	5240	13.16	-0.14	13.5	0.085	1.081	1.000	0.092
	5.2GHz/802.11a	Left Cheek	7	48	5240	13.16	0.09	13.5	0.131	1.081	1.000	0.142
	5.2GHz/802.11a	Left Tilted	7	48	5240	13.16	0.04	13.5	0.123	1.081	1.000	0.133
	5.2GHz/802.11a	Right Cheek	6	48	5240	14.43	-0.16	14.5	0.155	1.016	1.000	0.157
	5.2GHz/802.11a	Right Tilted	6	48	5240	14.43	0.00	14.5	0.088	1.016	1.000	0.089
13	5.2GHz/802.11a	Left Cheek	6	48	5240	14.43	0.00	14.5	0.182	1.016	1.000	0.185
	5.2GHz/802.11a	Left Tilted	6	48	5240	14.43	-0.06	14.5	0.092	1.016	1.000	0.093
ANSI / IEEE C95.1 – SAFETY LIMIT						1.6 W/kg (mW/g)						
Spatial Peak						Averaged over 1g						
Uncontrolled Exposure/General Population												

➤ WLAN 5.8 GHz Head SAR

Plot No.	Band/Mode	Test Position	ANT	CH.	Freq. (MHz)	Ave. Power (dBm)	Power Drift (dB)	Tune-Up Limit (dBm)	Meas. SAR _{1g} (W/kg)	Scaling Factor	D.C Factor	Reported SAR _{1g} (W/kg)
	5.8GHz/802.11a	Right Cheek	7	157	5785	13.80	-0.19	14.0	0.074	1.047	1.000	0.077
	5.8GHz/802.11a	Right Tilted	7	157	5785	13.80	0.13	14.0	0.030	1.047	1.000	0.031
	5.8GHz/802.11a	Left Cheek	7	157	5785	13.80	0.02	14.0	0.097	1.047	1.000	0.101
	5.8GHz/802.11a	Left Tilted	7	157	5785	13.80	0.05	14.0	0.035	1.047	1.000	0.037
	5.8GHz/802.11a	Right Cheek	6	165	5825	14.93	0.13	15.0	0.211	1.016	1.000	0.214
	5.8GHz/802.11a	Right Tilted	6	165	5825	14.93	0.16	15.0	0.123	1.016	1.000	0.125
14	5.8GHz/802.11a	Left Cheek	6	165	5825	14.93	0.00	15.0	0.320	1.016	1.000	0.325
	5.8GHz/802.11a	Left Tilted	6	165	5825	14.93	-0.13	15.0	0.135	1.016	1.000	0.137
ANSI / IEEE C95.1 – SAFETY LIMIT						1.6 W/kg (mW/g)						
Spatial Peak						Averaged over 1g						
Uncontrolled Exposure/General Population												

➤ Bluetooth Head SAR

Plot No.	Band/Mode	Test Position	CH.	Freq. (MHz)	Ave. Power (dBm)	Power Drift (dB)	Tune-Up Limit (dBm)	Meas. SAR _{1g} (W/kg)	Scaling Factor	D.C Factor	Reported SAR _{1g} (W/kg)
	BT/GFSK	Right Cheek	39	2441	5.57	0.00	6.0	<0.001*	1.104	1.000	<0.001*
	BT/GFSK	Right Tilted	39	2441	5.57	0.00	6.0	<0.001*	1.104	1.000	<0.001*
	BT/GFSK	Left Cheek	39	2441	5.57	0.00	6.0	<0.001*	1.104	1.000	<0.001*
	BT/GFSK	Left Tilted	39	2441	5.57	0.00	6.0	<0.001*	1.104	1.000	<0.001*
ANSI / IEEE C95.1 – SAFETY LIMIT Spatial Peak Uncontrolled Exposure/General Population					1.6 W/kg (mW/g) Averaged over 1g						

➤ BLE Head SAR

Plot No.	Band/Mode	Test Position	CH.	Freq. (MHz)	Ave. Power (dBm)	Power Drift (dB)	Tune-Up Limit (dBm)	Meas. SAR _{1g} (W/kg)	Scaling Factor	D.C Factor	Reported SAR _{1g} (W/kg)
	BLE/GFSK	Right Cheek	20	2442	5.93	-0.02	6.0	0.018	1.016	1.000	0.018
	BLE/GFSK	Right Tilted	20	2442	5.93	-0.03	6.0	0.006	1.016	1.000	0.006
15	BLE/GFSK	Left Cheek	20	2442	5.93	0.07	6.0	0.028	1.016	1.000	0.029
	BLE/GFSK	Left Tilted	20	2442	5.93	0.18	6.0	0.009	1.016	1.000	0.009
ANSI / IEEE C95.1 – SAFETY LIMIT Spatial Peak Uncontrolled Exposure/General Population					1.6 W/kg (mW/g) Averaged over 1g						

Note:

- Per KDB 447498 D01v06, for each exposure position, if the highest output power channel Reported SAR ≤ 0.8W/kg, other channels SAR testing is not necessary.
- Per KDB 865664 D01v01r04, for each frequency band, repeated SAR measurement is required when the measured SAR is ≥ 0.8W/kg.
- Per KDB 941225 D05v02r05, 100% RB allocation SAR measurement is not required when the highest reported SAR for 1 RB and 50% RB allocation are ≤ 0.8 W/kg.
- Per KDB 248227 D01v02r02, for 802.11b DSSS, when the reported SAR of the highest measured maximum output power channel for the exposure configuration is ≤ 0.8 W/kg, no further SAR testing is required in that exposure configuration.
- Per KDB 248227 D01v02r02, OFDM SAR is not required when the highest reported SAR for DSSS is adjusted by the ratio of OFDM to DSSS specified maximum output power and the adjusted SAR is ≤ 1.2 W/kg. Cuz the maximum output power specified for OFDM and DSSS are 44.67mW(16.5dBm) and 63.10mW(18.0dBm), the scaled SAR would be $0.720 \times (44.67/63.10) = 0.118 \text{ W/Kg} < 1.2 \text{ W/kg}$, therefore, SAR is not required for OFDM.
- According to KDB 865664 D02v01r02, SAR plot is required for the highest measured SAR in each exposure configuration, wireless mode and frequency band combination
- Highlight part of test data means repeated test.
- *: Due the antenna location and antenna performance results the SAR value lower than the lowest system limit, then we show “<0.001* W/Kg” in the report.

15.2 Standalone Body SAR

> GSM Body SAR

Plot No.	Band/Mode	Test Position	CH.	Freq. (MHz)	Ave. Power (dBm)	Power Drift (dB)	Tune-Up Limit (dBm)	Meas. SAR _{1g} (W/kg)	Scaling Factor	Reported SAR _{1g} (W/kg)
	GPRS850/4 slots	Front	190	836.6	29.46	-0.13	30.0	0.312	1.132	0.353
16	GPRS850/4 slots	Back	190	836.6	29.46	0.12	30.0	0.640	1.132	0.724
	GPRS1900/4 slots	Front	661	1880	26.60	0.01	27.0	0.214	1.096	0.235
17	GPRS1900/4 slots	Back	661	1880	26.60	0.11	27.0	0.573	1.096	0.628
ANSI / IEEE C95.1 – SAFETY LIMIT Spatial Peak Uncontrolled Exposure/General Population					1.6 W/kg (mW/g) Averaged over 1g					

> WCDMA Body SAR

Plot No.	Band/Mode	Test Position	CH.	Freq. (MHz)	Ave. Power (dBm)	Power Drift (dB)	Tune-Up Limit (dBm)	Meas. SAR _{1g} (W/kg)	Scaling Factor	Reported SAR _{1g} (W/kg)
	Band II/RMC	Front	9400	1880	24.13	0.12	24.5	0.338	1.089	0.368
18	Band II/RMC	Back	9400	1880	24.13	0.14	24.5	0.665	1.089	0.724
	Band IV/RMC	Front	1312	1712.4	23.53	-0.18	24.0	0.281	1.114	0.313
19	Band IV/RMC	Back	1312	1712.4	23.53	-0.07	24.0	0.422	1.114	0.470
	Band V/RMC	Front	4183	836.6	23.91	-0.08	24.0	0.189	1.021	0.193
20	Band V/RMC	Back	4183	836.6	23.91	0.16	24.0	0.359	1.021	0.367
ANSI / IEEE C95.1 – SAFETY LIMIT Spatial Peak Uncontrolled Exposure/General Population					1.6 W/kg (mW/g) Averaged over 1g					

> FDD-LTE Band 7(20MHz) QPSK Body SAR

Plot No.	Band/Mode	Test Position	CH.	Freq. (MHz)	Ave. Power (dBm)	Power Drift (dB)	Tune-Up Limit (dBm)	Meas. SAR _{1g} (W/kg)	Scaling Factor	Reported SAR _{1g} (W/kg)
	Band7/1RB#49	Front	21350	2560	24.00	0.06	24.5	0.287	1.122	0.322
21	Band7/1RB#49	Back	21350	2560	24.00	-0.07	24.5	0.414	1.122	0.465
	Band7/50%RB#49	Front	21350	2560	23.47	0.07	23.5	0.261	1.007	0.263
	Band7/50%RB#49	Back	21350	2560	23.47	0.01	23.5	0.402	1.007	0.405
ANSI / IEEE C95.1 – SAFETY LIMIT Spatial Peak Uncontrolled Exposure/General Population					1.6 W/kg (mW/g) Averaged over 1g					

> FDD-LTE Band 12(10MHz) QPSK Body SAR

Plot No.	Band/Mode	Test Position	CH.	Freq. (MHz)	Ave. Power (dBm)	Power Drift (dB)	Tune-Up Limit (dBm)	Meas. SAR _{1g} (W/kg)	Scaling Factor	Reported SAR _{1g} (W/kg)
	Band12/1RB#49	Front	23130	711	23.79	-0.19	24.0	0.129	1.050	0.135
22	Band12/1RB#49	Back	23130	711	23.79	-0.03	24.0	0.267	1.050	0.280
	Band12/50%RB#24	Front	23060	704	22.51	0.10	23.0	0.115	1.119	0.129
	Band12/50%RB#24	Back	23060	704	22.51	-0.13	23.0	0.241	1.119	0.270
ANSI / IEEE C95.1 – SAFETY LIMIT Spatial Peak Uncontrolled Exposure/General Population					1.6 W/kg (mW/g) Averaged over 1g					

➤ FDD-LTE Band 25(20MHz) QPSK Body SAR

Plot No.	Band/Mode	Test Position	CH.	Freq. (MHz)	Ave. Power (dBm)	Power Drift (dB)	Tune-Up Limit (dBm)	Meas. SAR _{1g} (W/kg)	Scaling Factor	Reported SAR _{1g} (W/kg)
	Band25/1RB#0	Front	26365	1882.5	23.82	-0.09	24.0	0.333	1.042	0.347
23	Band25/1RB#0	Back	26365	1882.5	23.82	0.13	24.0	0.563	1.042	0.587
	Band25/50%RB#24	Front	26590	1905	22.72	-0.07	23.0	0.301	1.067	0.321
	Band25/50%RB#24	Back	26590	1905	22.72	0.05	23.0	0.543	1.067	0.579
ANSI / IEEE C95.1 – SAFETY LIMIT Spatial Peak Uncontrolled Exposure/General Population					1.6 W/kg (mW/g) Averaged over 1g					

➤ FDD-LTE Band 26(15MHz) QPSK Body SAR

Plot No.	Band/Mode	Test Position	CH.	Freq. (MHz)	Ave. Power (dBm)	Power Drift (dB)	Tune-Up Limit (dBm)	Meas. SAR _{1g} (W/kg)	Scaling Factor	Reported SAR _{1g} (W/kg)
	Band26/1RB#37	Front	26965	841.5	23.96	-0.20	24.5	0.185	1.132	0.209
24	Band26/1RB#37	Back	26965	841.5	23.96	-0.03	24.5	0.372	1.132	0.421
	Band26/50%RB#16	Front	26965	841.5	22.27	0.05	22.5	0.157	1.054	0.165
	Band26/50%RB#16	Back	26965	841.5	22.27	0.02	22.5	0.335	1.054	0.353
ANSI / IEEE C95.1 – SAFETY LIMIT Spatial Peak Uncontrolled Exposure/General Population					1.6 W/kg (mW/g) Averaged over 1g					

➤ TDD-LTE Band 41(20MHz) QPSK Body SAR

Plot No.	Band/Mode	Test Position	CH.	Freq. (MHz)	Ave. Power (dBm)	Power Drift (dB)	Tune-Up Limit (dBm)	Meas. SAR _{1g} (W/kg)	Scaling Factor	D.C Factor	Reported SAR _{1g} (W/kg)
	Band41/1RB#49	Front	40620	2593	24.34	-0.06	24.5	0.289	1.038	1.008	0.302
25	Band41/1RB#49	Back	40620	2593	24.34	-0.05	24.5	0.414	1.038	1.008	0.433
	Band41/50%RB#24	Front	40620	2593	23.47	0.16	23.5	0.266	1.007	1.008	0.270
	Band41/50%RB#24	Back	40620	2593	23.47	-0.08	23.5	0.384	1.007	1.008	0.390
ANSI / IEEE C95.1 – SAFETY LIMIT Spatial Peak Uncontrolled Exposure/General Population					1.6 W/kg (mW/g) Averaged over 1g						

➤ FDD-LTE Band 66(20MHz) QPSK Body SAR

Plot No.	Band/Mode	Test Position	CH.	Freq. (MHz)	Ave. Power (dBm)	Power Drift (dB)	Tune-Up Limit (dBm)	Meas. SAR _{1g} (W/kg)	Scaling Factor	Reported SAR _{1g} (W/kg)
	Band66/1RB#0	Front	132072	1720	23.88	0.02	24.0	0.274	1.028	0.282
26	Band66/1RB#0	Back	132072	1720	23.88	0.10	24.0	0.384	1.028	0.395
	Band66/50%RB#0	Front	132072	1720	22.81	0.04	23.0	0.241	1.045	0.252
	Band66/50%RB#0	Back	132072	1720	22.81	-0.05	23.0	0.366	1.045	0.382
ANSI / IEEE C95.1 – SAFETY LIMIT Spatial Peak Uncontrolled Exposure/General Population					1.6 W/kg (mW/g) Averaged over 1g					

➤ WLAN 2.4GHz Body SAR

Plot No.	Band/Mode	Test Position	ANT	CH.	Freq. (MHz)	Ave. Power (dBm)	Power Drift (dB)	Tune-Up Limit (dBm)	Meas. SAR _{1g} (W/kg)	Scaling Factor	D.C Factor	Reported SAR _{1g} (W/kg)
	2.4GHz/802.11b	Front	7	6	2437	16.93	-0.18	17.0	0.182	1.016	1.000	0.185
	2.4GHz/802.11b	Back	7	6	2437	16.93	-0.07	17.0	0.049	1.016	1.000	0.050
	2.4GHz/802.11b	Front	6	11	2462	17.64	-0.04	18.0	0.170	1.086	1.000	0.185
27	2.4GHz/802.11b	Back	6	11	2462	17.64	-0.01	18.0	0.187	1.086	1.000	0.203
ANSI / IEEE C95.1 – SAFETY LIMIT Spatial Peak Uncontrolled Exposure/General Population						1.6 W/kg (mW/g) Averaged over 1g						

➤ WLAN 5.2GHz Body SAR

Plot No.	Band/Mode	Test Position	ANT	CH.	Freq. (MHz)	Ave. Power (dBm)	Power Drift (dB)	Tune-Up Limit (dBm)	Meas. SAR _{1g} (W/kg)	Scaling Factor	D.C Factor	Reported SAR _{1g} (W/kg)
	5.2GHz/802.11a	Front	7	48	5240	13.16	0.00	13.5	0.078	1.081	1.000	0.084
	5.2GHz/802.11a	Back	7	48	5240	13.16	-0.03	13.5	0.311	1.081	1.000	0.336
	5.2GHz/802.11a	Front	6	48	5240	14.43	0.00	14.5	0.042	1.016	1.000	0.042
28	5.2GHz/802.11a	Back	6	48	5240	14.43	-0.01	14.5	0.384	1.016	1.000	0.390
ANSI / IEEE C95.1 – SAFETY LIMIT Spatial Peak Uncontrolled Exposure/General Population						1.6 W/kg (mW/g) Averaged over 1g						

➤ WLAN 5.8GHz Wi-Fi Body SAR

Plot No.	Band/Mode	Test Position	ANT	CH.	Freq. (MHz)	Ave. Power (dBm)	Power Drift (dB)	Tune-Up Limit (dBm)	Meas. SAR _{1g} (W/kg)	Scaling Factor	D.C Factor	Reported SAR _{1g} (W/kg)
	5.8GHz/802.11a	Front	7	157	5785	13.80	0.00	14.0	0.046	1.047	1.000	0.048
	5.8GHz/802.11a	Back	7	157	5785	13.80	0.00	14.0	0.143	1.047	1.000	0.150
	5.8GHz/802.11a	Front	6	165	5825	14.93	0.05	15.0	0.097	1.016	1.000	0.099
29	5.8GHz/802.11a	Back	6	165	5825	14.93	0.00	15.0	0.264	1.016	1.000	0.268
ANSI / IEEE C95.1 – SAFETY LIMIT Spatial Peak Uncontrolled Exposure/General Population						1.6 W/kg (mW/g) Averaged over 1g						

➤ Bluetooth Body SAR

Plot No.	Band/Mode	Test Position	CH.	Freq. (MHz)	Ave. Power (dBm)	Power Drift (dB)	Tune-Up Limit (dBm)	Meas. SAR _{1g} (W/kg)	Scaling Factor	D.C Factor	Reported SAR _{1g} (W/kg)
	BT/GFSK	Front	39	2441	5.57	0.00	6.0	<0.001*	1.104	1.000	<0.001*
	BT/GFSK	Back	39	2441	5.57	0.00	6.0	<0.001*	1.104	1.000	<0.001*
ANSI / IEEE C95.1 – SAFETY LIMIT Spatial Peak Uncontrolled Exposure/General Population							1.6 W/kg (mW/g) Averaged over 1g				

➤ BLE Body SAR

Plot No.	Band/Mode	Test Position	CH.	Freq. (MHz)	Ave. Power (dBm)	Power Drift (dB)	Tune-Up Limit (dBm)	Meas. SAR _{1g} (W/kg)	Scaling Factor	D.C Factor	Reported SAR _{1g} (W/kg)
	BLE/GFSK	Front	20	2442	5.93	-0.01	6.0	<0.001*	1.016	1.000	<0.001*
30	BLE/GFSK	Back	20	2442	5.93	0.00	6.0	0.001	1.016	1.000	0.001
ANSI / IEEE C95.1 – SAFETY LIMIT Spatial Peak Uncontrolled Exposure/General Population							1.6 W/kg (mW/g) Averaged over 1g				

Note:

1. Body-worn SAR testing was performed at 10 mm separation, and this distance is determined by the handset manufacturer that there will be body-worn accessories that users may acquire at the time of equipment certification, to enable users to purchase aftermarket body-worn accessories with the required minimum separation.
2. Per KDB 941225 D06v02r01, when the same wireless modes and device transmission configurations are required for testing body-worn accessories and hotspot mode, it is not necessary to test body-worn accessory SAR for the same device orientation if the test separation distance for hotspot mode is more conservative than that used for body-worn accessories.
3. Body-worn exposure conditions are intended to voice call operations, therefore GSM voice call is selected to be tested.
4. Per KDB 648474 D04v01r03, when the *Reported* SAR for a body-worn accessory measured without a headset connected to the handset is ≤ 1.2 W/kg, SAR testing with a headset connected to the handset is not required.
5. The WLAN SAR perform the front and back position, due considered the simultaneous SAR for body-worn.
6. Per KDB 447498 D01v06, for each exposure position, if the highest output channel Reported SAR ≤ 0.8 W/kg, other channels SAR testing is not necessary.
7. Per KDB 865664 D01v01r04, for each frequency band, repeated SAR measurement is required when the measured SAR is ≥ 0.8 W/kg.
8. Per KDB 941225 D05v02r05, 100% RB allocation SAR measurement is not required when the highest reported SAR for 1 RB and 50% RB allocation are ≤ 0.8 W/kg.
9. According to KDB 865664 D02v01r02, SAR plot is required for the highest measured SAR in each exposure configuration, wireless mode and frequency band combination.
10. Highlight part of test data means repeated test.
11. *: Due the antenna location and antenna performance results the SAR value lower than the lowest system limit, then we show "<0.001* W/Kg" in the report.

15.3 Body SAR in Hotspot Mode

> GSM Body SAR in Hotspot mode

Plot No.	Band/Mode	Test Position	CH.	Freq. (MHz)	Ave. Power (dBm)	Power Drift (dB)	Tune-Up Limit (dBm)	Meas. SAR _{1g} (W/kg)	Scaling Factor	Reported SAR _{1g} (W/kg)
	GPRS850/4 slots	Front	190	836.6	29.46	-0.13	30.0	0.312	1.132	0.353
16	GPRS850/4 slots	Back	190	836.6	29.46	0.12	30.0	0.640	1.132	0.724
	GPRS850/4 slots	Left	190	836.6	29.46	-0.08	30.0	0.333	1.132	0.377
	GPRS850/4 slots	Bottom	190	836.6	29.46	0.03	30.0	0.496	1.132	0.561
	GPRS1900/4 slots	Front	661	1880	26.60	0.01	27.0	0.214	1.096	0.235
17	GPRS1900/4 slots	Back	661	1880	26.60	0.11	27.0	0.573	1.096	0.628
	GPRS1900/4 slots	Left	661	1880	26.60	-0.07	27.0	0.256	1.096	0.281
	GPRS1900/4 slots	Bottom	661	1880	26.60	0.10	27.0	0.411	1.096	0.450
ANSI / IEEE C95.1 – SAFETY LIMIT Spatial Peak Uncontrolled Exposure/General Population					1.6 W/kg (mW/g) Averaged over 1g					

> WCDMA Body SAR in Hotspot mode

Plot No.	Band/Mode	Test Position	CH.	Freq. (MHz)	Ave. Power (dBm)	Power Drift (dB)	Tune-Up Limit (dBm)	Meas. SAR _{1g} (W/kg)	Scaling Factor	Reported SAR _{1g} (W/kg)
	Band II/RMC	Front	9400	1880	24.13	0.12	24.5	0.338	1.089	0.368
18	Band II/RMC	Back	9400	1880	24.13	0.14	24.5	0.665	1.089	0.724
	Band II/RMC	Left	9400	1880	24.13	-0.11	24.5	0.346	1.089	0.377
	Band II/RMC	Bottom	9400	1880	24.13	-0.08	24.5	0.486	1.089	0.529
	Band IV/RMC	Front	1312	1712.4	23.53	-0.18	24.0	0.281	1.114	0.313
19	Band IV/RMC	Back	1312	1712.4	23.53	-0.07	24.0	0.422	1.114	0.470
	Band IV/RMC	Left	1312	1712.4	23.53	0.06	24.0	0.293	1.114	0.326
	Band IV/RMC	Bottom	1312	1712.4	23.53	-0.02	24.0	0.244	1.114	0.272
	Band V/RMC	Front	4183	836.6	23.91	-0.08	24.0	0.189	1.021	0.193
20	Band V/RMC	Back	4183	836.6	23.91	0.16	24.0	0.359	1.021	0.367
	Band V/RMC	Left	4183	836.6	23.91	-0.17	24.0	0.203	1.021	0.207
	Band V/RMC	Bottom	4183	836.6	23.91	-0.02	24.0	0.241	1.021	0.246
ANSI / IEEE C95.1 – SAFETY LIMIT Spatial Peak Uncontrolled Exposure/General Population					1.6 W/kg (mW/g) Averaged over 1g					

➤ FDD-LTE Band 7(20MHz) QPSK Body SAR in Hotspot mode

Plot No.	Band/Mode	Test Position	CH.	Freq. (MHz)	Ave. Power (dBm)	Power Drift (dB)	Tune-Up Limit (dBm)	Meas. SAR _{1g} (W/kg)	Scaling Factor	Reported SAR _{1g} (W/kg)
	Band7/1RB#49	Front	21350	2560	24.00	0.06	24.5	0.287	1.122	0.322
	Band7/1RB#49	Back	21350	2560	24.00	-0.07	24.5	0.414	1.122	0.465
	Band7/1RB#49	Left	21350	2560	24.00	0.10	24.5	0.301	1.122	0.338
	Band7/1RB#49	Bottom	21350	2560	24.00	0.03	24.5	1.050	1.122	1.178
	Band7/1RB#49	Bottom	20850	2510	23.98	-0.01	24.5	0.959	1.127	1.081
31	Band7/1RB#49	Bottom	21100	2535	23.75	0.00	24.5	1.110	1.189	1.320
	Band7/1RB#49	Bottom	21100	2535	23.75	-0.11	24.5	1.080	1.189	1.284
	Band7/50%RB#49	Front	21350	2560	23.47	0.07	23.5	0.261	1.007	0.263
	Band7/50%RB#49	Back	21350	2560	23.47	0.01	23.5	0.402	1.007	0.405
	Band7/50%RB#49	Left	21350	2560	23.47	-0.08	23.5	0.289	1.007	0.291
	Band7/50%RB#49	Bottom	21350	2560	23.47	-0.17	23.5	0.753	1.007	0.758
	Band7/100%RB#0	Bottom	21100	2535	23.45	-0.02	23.5	0.728	1.012	0.737
ANSI / IEEE C95.1 – SAFETY LIMIT Spatial Peak Uncontrolled Exposure/General Population					1.6 W/kg (mW/g) Averaged over 1g					

➤ FDD-LTE Band 12(10MHz) QPSK Body SAR in Hotspot mode

Plot No.	Band/Mode	Test Position	CH.	Freq. (MHz)	Ave. Power (dBm)	Power Drift (dB)	Tune-Up Limit (dBm)	Meas. SAR _{1g} (W/kg)	Scaling Factor	Reported SAR _{1g} (W/kg)
	Band12/1RB#49	Front	23130	711	23.79	-0.19	24.0	0.129	1.050	0.135
22	Band12/1RB#49	Back	23130	711	23.79	-0.03	24.0	0.267	1.050	0.280
	Band12/1RB#49	Left	23130	711	23.79	0.05	24.0	0.130	1.050	0.137
	Band12/1RB#49	Bottom	23130	711	23.79	0.15	24.0	0.153	1.050	0.161
	Band12/50%RB#24	Front	23060	704	22.51	0.10	23.0	0.115	1.119	0.129
	Band12/50%RB#24	Back	23060	704	22.51	-0.13	23.0	0.241	1.119	0.270
	Band12/50%RB#24	Left	23060	704	22.51	0.01	23.0	0.120	1.119	0.134
	Band12/50%RB#24	Bottom	23060	704	22.51	0.05	23.0	0.141	1.119	0.158
ANSI / IEEE C95.1 – SAFETY LIMIT Spatial Peak Uncontrolled Exposure/General Population					1.6 W/kg (mW/g) Averaged over 1g					

➤ FDD-LTE Band 25(20MHz) QPSK Body SAR in Hotspot mode

Plot No.	Band/Mode	Test Position	CH.	Freq. (MHz)	Ave. Power (dBm)	Power Drift (dB)	Tune-Up Limit (dBm)	Meas. SAR _{1g} (W/kg)	Scaling Factor	Reported SAR _{1g} (W/kg)
	Band25/1RB#0	Front	26365	1882.5	23.82	-0.09	24.0	0.333	1.042	0.347
23	Band25/1RB#0	Back	26365	1882.5	23.82	0.13	24.0	0.563	1.042	0.587
	Band25/1RB#0	Left	26365	1882.5	23.82	-0.16	24.0	0.342	1.042	0.356
	Band25/1RB#0	Bottom	26365	1882.5	23.82	0.09	24.0	0.440	1.042	0.458
	Band25/50%RB#24	Front	26590	1905	22.72	-0.07	23.0	0.301	1.067	0.321
	Band25/50%RB#24	Back	26590	1905	22.72	0.05	23.0	0.543	1.067	0.579
	Band25/50%RB#24	Left	26590	1905	22.72	0.15	23.0	0.321	1.067	0.343
	Band25/50%RB#24	Bottom	26590	1905	22.72	-0.06	23.0	0.389	1.067	0.415
ANSI / IEEE C95.1 – SAFETY LIMIT Spatial Peak Uncontrolled Exposure/General Population					1.6 W/kg (mW/g) Averaged over 1g					

➤ FDD-LTE Band 26(15MHz) QPSK Body SAR in Hotspot mode

Plot No.	Band/Mode	Test Position	CH.	Freq. (MHz)	Ave. Power (dBm)	Power Drift (dB)	Tune-Up Limit (dBm)	Meas. SAR _{1g} (W/kg)	Scaling Factor	Reported SAR _{1g} (W/kg)	
24	Band26/1RB#37	Front	26965	841.5	23.96	-0.20	24.5	0.185	1.132	0.209	
	Band26/1RB#37	Back	26965	841.5	23.96	-0.03	24.5	0.372	1.132	0.421	
	Band26/1RB#37	Left	26965	841.5	23.96	-0.04	24.5	0.189	1.132	0.214	
	Band26/1RB#37	Bottom	26965	841.5	23.96	-0.09	24.5	0.247	1.132	0.280	
	Band26/50%RB#16	Front	26965	841.5	22.27	0.05	22.5	0.157	1.054	0.165	
	Band26/50%RB#16	Back	26965	841.5	22.27	0.02	22.5	0.335	1.054	0.353	
	Band26/50%RB#16	Left	26965	841.5	22.27	0.16	22.5	0.147	1.054	0.155	
	Band26/50%RB#16	Bottom	26965	841.5	22.27	0.07	22.5	0.218	1.054	0.230	
ANSI / IEEE C95.1 – SAFETY LIMIT Spatial Peak Uncontrolled Exposure/General Population							1.6 W/kg (mW/g) Averaged over 1g				

➤ TDD-LTE Band 41(20MHz) QPSK Body SAR in Hotspot mode

Plot No.	Band/Mode	Test Position	CH.	Freq. (MHz)	Ave. Power (dBm)	Power Drift (dB)	Tune-Up Limit (dBm)	Meas. SAR _{1g} (W/kg)	Scaling Factor	D.C Factor	Reported SAR _{1g} (W/kg)
	Band41/1RB#49	Front	40620	2593	24.34	-0.06	24.5	0.289	1.038	1.008	0.302
	Band41/1RB#49	Back	40620	2593	24.34	-0.05	24.5	0.414	1.038	1.008	0.433
	Band41/1RB#49	Left	40620	2593	24.34	-0.17	24.5	0.292	1.038	1.008	0.306
	Band41/1RB#49	Bottom	40620	2593	24.34	0.05	24.5	1.020	1.038	1.008	1.067
32	Band41/1RB#99	Bottom	39750	2506	24.32	0.08	24.5	1.110	1.042	1.008	1.166
	Band41/1RB#99	Bottom	40185	2549.5	24.10	-0.19	24.5	1.250	1.096	1.008	1.381
	Band41/1RB#99	Bottom	40185	2549.5	24.10	0.03	24.5	1.210	1.096	1.008	1.337
	Band41/1RB#49	Bottom	41055	2636.5	24.15	-0.16	24.5	0.952	1.084	1.008	1.040
	Band41/1RB#99	Bottom	41490	2680	23.88	0.08	24.5	0.965	1.153	1.008	1.122
	Band41/50%RB#24	Front	40620	2593	23.47	0.16	23.5	0.266	1.007	1.008	0.270
	Band41/50%RB#24	Back	40620	2593	23.47	-0.08	23.5	0.384	1.007	1.008	0.390
	Band41/50%RB#24	Left	40620	2593	23.47	-0.10	23.5	0.258	1.007	1.008	0.262
	Band41/50%RB#24	Bottom	40620	2593	23.47	0.14	23.5	0.787	1.007	1.008	0.799
	Band41/100%RB#0	Bottom	40620	2593	23.30	-0.12	23.5	0.759	1.047	1.008	0.801
ANSI / IEEE C95.1 – SAFETY LIMIT Spatial Peak Uncontrolled Exposure/General Population							1.6 W/kg (mW/g) Averaged over 1g				

➤ FDD-LTE Band 66(20MHz) QPSK Body SAR in Hotspot mode

Plot No.	Band/Mode	Test Position	CH.	Freq. (MHz)	Ave. Power (dBm)	Power Drift (dB)	Tune-Up Limit (dBm)	Meas. SAR _{1g} (W/kg)	Scaling Factor	Reported SAR _{1g} (W/kg)	
26	Band66/1RB#0	Front	132072	1720	23.88	0.02	24.0	0.274	1.028	0.282	
	Band66/1RB#0	Back	132072	1720	23.88	0.10	24.0	0.384	1.028	0.395	
	Band66/1RB#0	Left	132072	1720	23.88	0.00	24.0	0.276	1.028	0.284	
	Band66/1RB#0	Bottom	132072	1720	23.88	-0.03	24.0	0.256	1.028	0.263	
	Band66/50%RB#0	Front	132072	1720	22.81	0.04	23.0	0.241	1.045	0.252	
	Band66/50%RB#0	Back	132072	1720	22.81	-0.05	23.0	0.366	1.045	0.382	
	Band66/50%RB#0	Left	132072	1720	22.81	0.17	23.0	0.231	1.045	0.241	
	Band66/50%RB#0	Bottom	132072	1720	22.81	-0.03	23.0	0.218	1.045	0.228	
ANSI / IEEE C95.1 – SAFETY LIMIT Spatial Peak Uncontrolled Exposure/General Population							1.6 W/kg (mW/g) Averaged over 1g				

➤ WLAN 2.4GHz Body SAR in Hotspot mode

Plot No.	Band/Mode	Test Position	ANT	CH.	Freq. (MHz)	Ave. Power (dBm)	Power Drift (dB)	Tune-Up Limit (dBm)	Meas. SAR _{1g} (W/kg)	Scaling Factor	D.C Factor	Reported SAR _{1g} (W/kg)
	2.4GHz/802.11b	Front	7	6	2437	16.93	-0.18	17.0	0.182	1.016	1.000	0.185
	2.4GHz/802.11b	Back	7	6	2437	16.93	-0.07	17.0	0.049	1.016	1.000	0.050
	2.4GHz/802.11b	Right	7	6	2437	16.93	-0.18	17.0	0.192	1.016	1.000	0.195
	2.4GHz/802.11b	Front	6	11	2462	17.64	-0.04	18.0	0.170	1.086	1.000	0.185
	2.4GHz/802.11b	Back	6	11	2462	17.64	-0.01	18.0	0.187	1.086	1.000	0.203
33	2.4GHz/802.11b	Right	6	11	2462	17.64	0.09	18.0	0.326	1.086	1.000	0.354
	2.4GHz/802.11b	Top	6	11	2462	17.64	0.18	18.0	0.162	1.086	1.000	0.176
ANSI / IEEE C95.1 – SAFETY LIMIT						1.6 W/kg (mW/g)						
Spatial Peak						Averaged over 1g						
Uncontrolled Exposure/General Population												

➤ WLAN 5.2GHz Body SAR in Hotspot mode

Plot No.	Band/Mode	Test Position	ANT	CH.	Freq. (MHz)	Ave. Power (dBm)	Power Drift (dB)	Tune-Up Limit (dBm)	Meas. SAR _{1g} (W/kg)	Scaling Factor	D.C Factor	Reported SAR _{1g} (W/kg)
	5.2GHz/802.11a	Front	7	48	5240	13.16	0.00	13.5	0.078	1.081	1.000	0.084
	5.2GHz/802.11a	Back	7	48	5240	13.16	-0.03	13.5	0.311	1.081	1.000	0.336
34	5.2GHz/802.11a	Right	7	48	5240	13.16	0.01	13.5	0.450	1.081	1.000	0.486
	5.2GHz/802.11a	Front	6	48	5240	14.43	0.00	14.5	0.042	1.016	1.000	0.042
	5.2GHz/802.11a	Back	6	48	5240	14.43	-0.01	14.5	0.384	1.016	1.000	0.390
	5.2GHz/802.11a	Right	6	48	5240	14.43	-0.07	14.5	0.407	1.016	1.000	0.414
	5.2GHz/802.11a	Top	6	48	5240	14.43	0.09	14.5	0.102	1.016	1.000	0.104
ANSI / IEEE C95.1 – SAFETY LIMIT						1.6 W/kg (mW/g)						
Spatial Peak						Averaged over 1g						
Uncontrolled Exposure/General Population												

➤ WLAN 5.8GHz Body SAR in Hotspot mode

Plot No.	Band/Mode	Test Position	ANT	CH.	Freq. (MHz)	Ave. Power (dBm)	Power Drift (dB)	Tune-Up Limit (dBm)	Meas. SAR _{1g} (W/kg)	Scaling Factor	D.C Factor	Reported SAR _{1g} (W/kg)
	5.8GHz/802.11a	Front	7	157	5785	13.80	0.00	14.0	0.046	1.047	1.000	0.048
	5.8GHz/802.11a	Back	7	157	5785	13.80	0.00	14.0	0.143	1.047	1.000	0.150
	5.8GHz/802.11a	Right	7	157	5785	13.80	0.04	14.0	0.168	1.047	1.000	0.176
	5.8GHz/802.11a	Front	6	165	5825	14.93	0.05	15.0	0.097	1.016	1.000	0.099
	5.8GHz/802.11a	Back	6	165	5825	14.93	0.00	15.0	0.264	1.016	1.000	0.268
35	5.8GHz/802.11a	Right	6	165	5825	14.93	0.03	15.0	0.544	1.016	1.000	0.553
	5.8GHz/802.11a	Top	6	165	5825	14.93	0.07	15.0	0.153	1.016	1.000	0.155
ANSI / IEEE C95.1 – SAFETY LIMIT						1.6 W/kg (mW/g)						
Spatial Peak						Averaged over 1g						
Uncontrolled Exposure/General Population												

➤ Bluetooth Body SAR in Hotspot mode

Plot No.	Band/Mode	Test Position	CH.	Freq. (MHz)	Ave. Power (dBm)	Power Drift (dB)	Tune-Up Limit (dBm)	Meas. SAR _{1g} (W/kg)	Scaling Factor	D.C Factor	Reported SAR _{1g} (W/kg)
	BT/GFSK	Front	39	2441	5.57	0.00	6.0	<0.001*	1.104	1.000	<0.001*
	BT/GFSK	Back	39	2441	5.57	0.00	6.0	<0.001*	1.104	1.000	<0.001*
	BT/GFSK	Right	39	2441	5.57	0.00	6.0	<0.001*	1.104	1.000	<0.001*
ANSI / IEEE C95.1 – SAFETY LIMIT						1.6 W/kg (mW/g)					
Spatial Peak						Averaged over 1g					
Uncontrolled Exposure/General Population											

➤ Bluetooth Body SAR in Hotspot mode

Plot No.	Band/Mode	Test Position	CH.	Freq. (MHz)	Ave. Power (dBm)	Power Drift (dB)	Tune-Up Limit (dBm)	Meas. SAR _{1g} (W/kg)	Scaling Factor	D.C Factor	Reported SAR _{1g} (W/kg)
	BLE/GFSK	Front	20	2442	5.93	-0.01	6.0	<0.001*	1.016	1.000	<0.001*
	BLE/GFSK	Back	20	2442	5.93	0.00	6.0	0.001	1.016	1.000	0.001
36	BLE/GFSK	Right	20	2442	5.93	0.09	6.0	0.007	1.016	1.000	0.007
ANSI / IEEE C95.1 – SAFETY LIMIT											
Spatial Peak											
Uncontrolled Exposure/General Population					1.6 W/kg (mW/g) Averaged over 1g						

Note:

1. Per KDB 447498 D01v06, for each exposure position, if the highest output channel Reported SAR ≤0.8W/kg, other channels SAR testing is not necessary.
2. Additional WLAN SAR testing was performed for simultaneous transmission analysis.
3. For Hotspot SAR testing, per KDB 941225 D06v02r01, for EUT dimension ≥ 9cm*5cm, the test distance is 10mm. SAR must be measured for all surfaces and sides with a transmitting antenna located within 2.5cm from that surface or edge.
4. Per KDB 941225 D01v03r01, RMC 12.2kbps setting is used to evaluate SAR. If HSDPA output power is < 0.25dB higher than RMC 12.2kbps, or Reported SAR with RMC 12.2kbps setting is ≤ 1.2W/kg, HSDPA SAR evaluation can be excluded.
5. Per KDB 865664 D01v01r04, for each frequency band, repeated SAR measurement is required when the measured SAR is ≥0.8W/kg.
6. Per KDB 648474 D04v01r03, when the Reported SAR for a body-worn accessory measured without a headset connected to the handset is > 1.2 W/kg, SAR testing with a headset connected to the handset is required.
7. Per KDB 941225 D05v02r05, 100% RB allocation SAR measurement is not required when the highest reported SAR for 1 RB and 50% RB allocation are ≤ 0.8 W/kg. Otherwise, SAR is measured for the highest output power channel.
8. According to KDB 865664 D02v01r02, SAR plot is required for the highest measured SAR in each exposure configuration, wireless mode and frequency band combination.
9. Highlight part of test data means repeated test.
10. *: Due the antenna location and antenna performance results the SAR value lower than the lowest system limit, then we show “<0.001* W/Kg” in the report.

15.4 Product specific 10g SAR

> LTE SAR extremity SAR

Plot No.	Band/Mode	Test Position	CH.	Freq. (MHz)	Ave. Power (dBm)	Power Drift (dB)	Tune-Up Limit (dBm)	Meas. SAR _{10g} (W/kg)	Scaling Factor	Reported SAR _{10g} (W/kg)
37	Band7/1RB#49	Bottom	21100	2535	23.75	0.00	24.5	1.110	1.189	1.320
38	Band41/1RB#99	Bottom	40185	2549.5	24.10	-0.10	24.5	1.370	1.096	1.008
ANSI / IEEE C95.1 – SAFETY LIMIT Spatial Peak Uncontrolled Exposure/General Population					4.0 W/kg (mW/g) Averaged over 10g					

Note:

- For smart phones with a display diagonal dimension > 15.0 cm or an overall diagonal dimension > 16.0 cm. Per KDB648474 D04v01r03, When hotspot mode applies, 10-g extremity SAR is required only for the surfaces and edges with hotspot mode 1-g reported SAR > 1.2W/kg.

15.5 Repeated SAR measurement

Band/ Mode	Test Position	CH.	Freq. (MHz)	Measured SAR (W/kg)				
				Original	1 st Repeated		2 nd Repeated	
					Value	Ratio	Value	Ratio
Band7/1RB#49	Bottom	21100	2535	1.11	1.08	1.03	/	/
Band41/1RB#99	Bottom	40185	2549.5	1.25	1.21	1.03	/	/
ANSI / IEEE C95.1 – SAFETY LIMIT Spatial Peak Uncontrolled Exposure/General Population				1.6 W/kg (mW/g) Averaged over 1g				

Note:

- Per KDB 865664 D01v01r04, for each frequency band, repeated SAR measurement is required only when the measured SAR is ≥ 0.8 W/kg
- Per KDB 865664 D01v01r04, if the ratio of *original* and *repeated* is ≤ 1.2 and the measured SAR < 1.45 W/kg, only one repeated measurement is required.

15.6 Multi-Band Simultaneous Transmission Considerations

➤ Simultaneous Transmission Capabilities

According to FCC KDB Publication 447498 D01v06, transmitters are considered to be transmitting simultaneously when there is overlapping transmission, with the exception of transmissions during network hand-offs with maximum hand-off duration less than 30 seconds. Possible transmission paths for the EUT are shown in below Figure and are color-coded to indicate communication modes which share the same path. Modes which share the same transmission path cannot transmit simultaneously with one another.

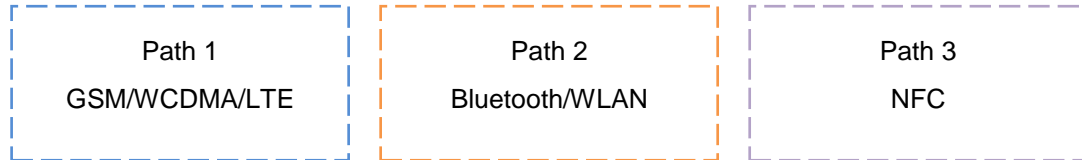


Fig.15.1 Simultaneous Transmission Paths

➤ Simultaneous Transmission Procedures

This device contains transmitters that may operate simultaneously. Therefore simultaneous transmission analysis is required. Per FCC KDB 447498 D01v06, simultaneous transmission SAR test exclusion may be applied when the sum of the 1-g SAR for all the simultaneous transmitting antennas in a specific a physical test configuration is ≤ 1.6 W/kg. When standalone SAR is not required to be measured, per FCC KDB 447498 D01v06 4.3.2), the following equation must be used to estimate the standalone 1g SAR for simultaneous transmission assessment involving that transmitter.

$$\text{Estimated SAR} = \frac{\sqrt{f(\text{GHz})}}{7.5} \cdot \frac{\text{Max. power of channel, mW}}{\text{Min. Separation Distance, mm}}$$

Mode	Max. tune-up Power (dBm)	Exposure Position	Head	Body	Hotspot
		Test Distance (mm)	0	10	10
NFC	-73.59	Estimated SAR (W/kg)	0.000	0.000	0.000

Note:

- When the minimum *test separation distance* is < 5 mm, a distance of 5 mm according is applied to determine estimated SAR.

➤ Multi-Band simultaneous Transmission Consideration

Simultaneous Transmission Consideration	Position	Applicable Combination
	Head	WWAN (Voice) + WLAN 2.4 GHz/5.2GHz/5.8GHz+ NFC
		WWAN (Voice) + Bluetooth+ NFC
	Body	WWAN (Data) + WLAN 2.4 GHz/5.2GHz/5.8GHz+ NFC
		WWAN (Data) + Bluetooth+ NFC
	Hotspot	WWAN (Data) + WLAN 2.4 GHz/5.2GHz/5.8GH+ NFC
WWAN (Data) + Bluetooth+ NFC		

Note:

- WLAN 2.4GHz Band, WLAN 5.2GHz Band, WLAN 5.8GHz Band and Bluetooth share the same antenna, and cannot transmit simultaneously.
- GSM/WCDMA/LTE shares the same antenna, and cannot transmit simultaneously.
- The Report SAR summation is calculated based on the same configuration and test position.
- Per KDB 447498 D01v06, simultaneous transmission SAR is compliant if,
 - Scalar SAR summation < 1.6 W/kg.
 - $SPLSR = (SAR_1 + SAR_2)^{1.5} / (\text{min. separation distance, mm})$, and the peak separation distance is determined from the square root of $[(x_1-x_2)^2 + (y_1-y_2)^2 + (z_1-z_2)^2]$, where (x_1, y_1, z_1) and (x_2, y_2, z_2) are the coordinates of the extrapolated peak SAR locations in the zoom scan If $SPLSR \leq 0.04$, simultaneously transmission SAR measurement is not necessary
 - Simultaneously transmission SAR measurement, and the Reported multi-band SAR < 1.6 W/kg

15.7 SAR Simultaneous Transmission Analysis

➤ Simultaneous Transmission

Position		Standalone SAR(W/kg)					Σ SAR _{1g} (W/kg)		
		1	2	3	4	5	1+2+5	1+3+5	1+4+5
		WWAN	2.4G WLAN MIMO	5G WLAN MIMO	BT	NFC			
Head	Right Cheek	0.299	0.462	0.292	0.018	0	0.761	0.591	0.317
	Right Tilted	0.107	0.272	0.181	0.006	0	0.379	0.288	0.113
	Left Cheek	0.347	1.075	0.426	0.028	0	1.422	0.773	0.375
	Left Tilted	0.129	0.830	0.226	0.009	0	0.959	0.355	0.138
Body-worn	Front	0.368	0.370	0.146	0.000	0	0.738	0.514	0.368
	Back	0.724	0.253	0.726	0.001	0	0.977	1.450	0.725
Hotspot	Front	0.368	0.370	0.146	0.000	0	0.738	0.514	0.368
	Back	0.724	0.253	0.726	0.001	0	0.977	1.450	0.725
	Left	0.377	/	/	/	0	0.377	0.377	0.377
	Right	/	0.549	0.900	0.007	0	0.549	0.900	0.007
	Top	/	0.176	0.155	/	0	0.176	0.155	/
	Bottom	1.381	/	/	/	0	1.381	1.381	1.381

➤ Simultaneous Transmission Conclusion

The above numerical summed SAR results for all the case simultaneous transmission conditions were below the SAR limit. Therefore, the above analysis is sufficient to determine that simultaneous transmission cases will not exceed the SAR limit and therefore no measured volumetric simultaneous SAR summation is required per FCC KDB Publication 447498 D01v06.

15.8 Measurement Uncertainty

Per KDB865664 D01 SAR Measurement 100 MHz to 6 GHz v01r04, when the highest measured 1-g SAR within a frequency band is < 1.5 W/kg, the extensive SAR measurement uncertainty analysis described in IEC/IEEE 62209-1528:2020 is not required in SAR reports submitted for equipment approval. The equivalent ratio (1.5/1.6) is applied to extremity and occupational exposure conditions.

15.9 Measurement Conclusion

The SAR evaluation indicates that the EUT complies with the RF radiation exposure limits of the FCC and Industry Canada, with respect to all parameters subject to this test. These measurements were taken to simulate the RF effects of RF exposure under worst-case conditions. Precise laboratory measures were taken to assure repeatability of the tests. The results and statements relate only to the item(s) tested. Please note that the absorption and distribution of electromagnetic energy in the body are very complex phenomena that depend on the mass, shape, and size of the body, the orientation of the body with respect to the field vectors, and the electrical properties of both the body and the environment. Other variables that may play a substantial role in possible biological effects are those that characterize the environment (e.g. ambient temperature, air velocity, relative humidity, and body insulation) and those that characterize the individual (e.g. age, gender, activity level, debilitation, or disease). Because various factors may interact with one another to vary the specific biological outcome of an exposure to electromagnetic fields, any protection guide should consider maximal amplification of biological effects as a result of field-body interactions, environmental conditions, and physiological variables.

16 Reference

- [1]. FCC 47 CFR Part 2 “Frequency Allocations and Radio Treaty Matters; General Rules and Regulations”
- [2]. ANSI/IEEE Std. C95.1-1992, “IEEE Standard for Safety Levels with Respect to Human Exposure to Radio Frequency Electromagnetic Fields, 3 kHz to 300 GHz”, September 1992
- [3]. IEC/IEEE 62209-1528:2020, “Measurement procedure for the assessment of specific absorption rate of human exposure to radio frequency fields from hand-held and body-mounted wireless communication devices –Part 1528: Human models, instrumentation, and procedures (Frequency range of 4 MHz to 10 GHz)”, October 2020
- [4]. SPEAG DASY52 System Handbook
- [5]. FCC KDB 248227 D01 v02r02, “SAR GUIDANCE FOR IEEE 802.11 (Wi-Fi) TRANSMITTERS”, October 2015
- [6]. FCC KDB 447498 D01 v06, “RF EXPOSURE PROCEDURES AND EQUIPMENT AUTHORIZATION POLICIES FOR MOBILE AND PORTABLE DEVICES”, October 2015
- [7]. FCC KDB 648474 D04 v01r03, “SAR EVALUATION CONSIDERATIONS FOR WIRELESS HANDSETS”, October 2015
- [8]. FCC KDB 941225 D01 v03r01, “3G SAR MEAUREMENT PROCEDURES”, October 2015
- [9]. FCC KDB 941225 D05 v02r05, “SAR EVALUATION CONSIDERATIONS FOR LTE DEVICES”, Dec 2015
- [10]. FCC KDB 941225 D06 v02r01, " SAR EVALUATION PROCEDURES FOR PORTABLE DEVICES WITH WIRELESS ROUTER CAPABILITIES", October 2015
- [11]. FCC KDB 865664 D01 v01r04, “SAR MEASUREMENT REQUIREMENTS FOR 100 MHz TO 6 GHz”, August 2015

Appendix A: Plots of SAR System Check

Test Laboratory: JYTSZ

Date: 2025/2/18

DUT: Dipole 750 MHz; Type: D750V3; Serial: SN:1118

Communication System: UID 0, CW (0); Frequency: 750 MHz; Duty Cycle: 1:1
 Medium parameters used: $f = 750 \text{ MHz}$; $\sigma = 0.884 \text{ S/m}$; $\epsilon_r = 42.616$; $\rho = 1000 \text{ kg/m}^3$
 Phantom section: Flat Section

DASY5 Configuration:

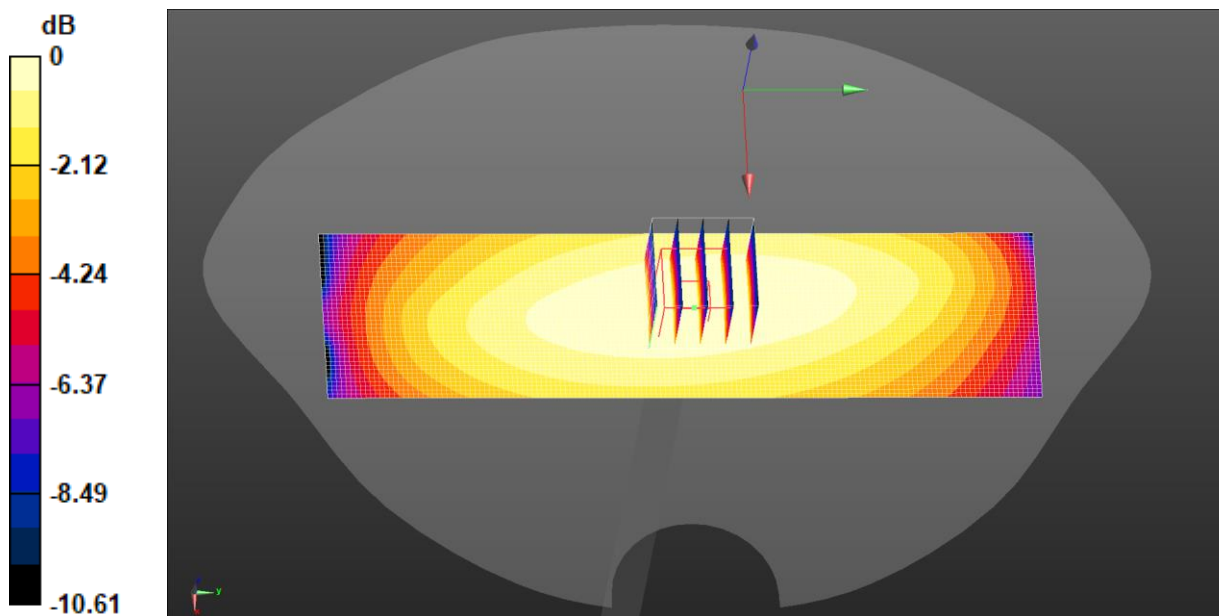
- Probe: EX3DV4 - SN7601; ConvF(10.65, 10.65, 10.65) @ 750 MHz; Calibrated: 01.15.2025
- Sensor-Surface: 1.4mm (Mechanical Surface Detection)
- Electronics: DAE4 Sn1373; Calibrated: 12.31.2024
- Phantom: SAM-Twin; Type: QD 000 P40 CD; Serial: 1885
- Measurement SW: DASY52, Version 52.10 (4); SEMCAD X Version 14.6.14 (7501)

System Performance Check at Frequency 750 MHz Head Tissue/d=15mm, Pin=80 mW, dist=1.4mm (EX-Probe)/Zoom Scan (7x7x7) (5x5x7)/Cube 0:

Measurement grid: dx=8mm, dy=8mm, dz=5mm
 Reference Value = 32.17 V/m; Power Drift = 0.11 dB
 Peak SAR (extrapolated) = 1.12 W/kg
SAR(1 g) = 0.663 W/kg; SAR(10 g) = 0.438 W/kg
 Smallest distance from peaks to all points 3 dB below = 16.3 mm
 Ratio of SAR at M2 to SAR at M1 = 61.9%
 Maximum value of SAR (measured) = 0.958 W/kg

System Performance Check at Frequency 750 MHz Head Tissue/d=15mm, Pin=80 mW, dist=1.4mm (EX-Probe)/Area Scan (41x151x1): Interpolated grid:

dx=1.500 mm, dy=1.500 mm
 Maximum value of SAR (interpolated) = 0.946 W/kg



$0 \text{ dB} = 0.958 \text{ W/kg} = -0.19 \text{ dBW/kg}$

Test Laboratory: JYTSZ

Date: 2025/2/22

DUT: Dipole 835 MHz; Type: D835V2; Serial: SN:4D154

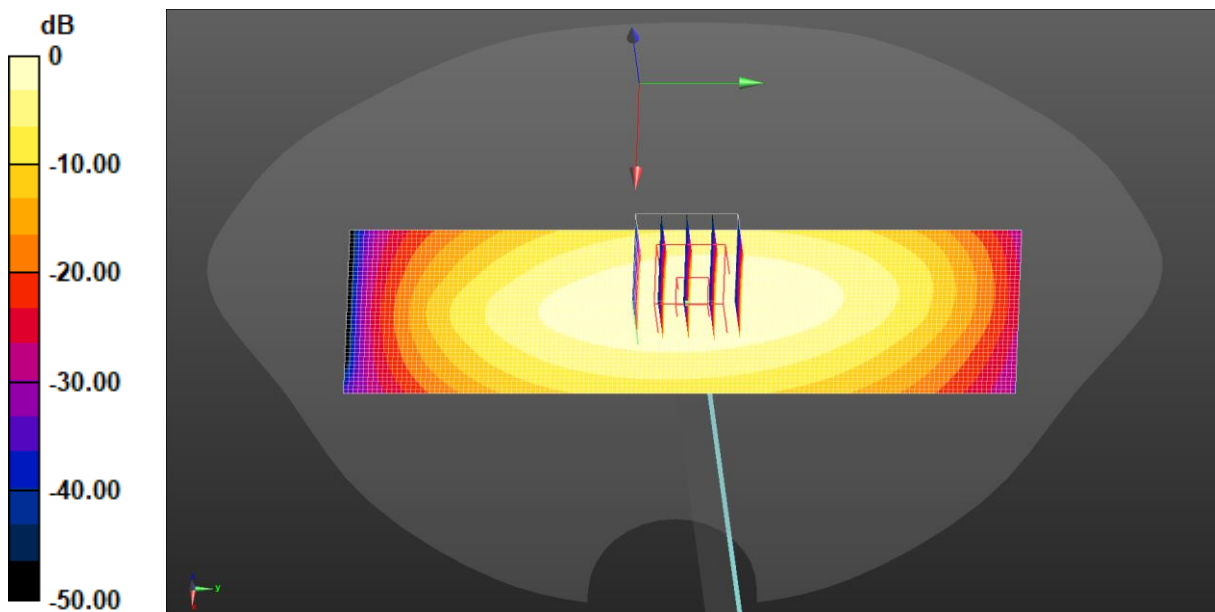
Communication System: UID 0, CW (0); Frequency: 835 MHz; Duty Cycle: 1:1
 Medium parameters used (interpolated): $f = 835 \text{ MHz}$; $\sigma = 0.899 \text{ S/m}$; $\epsilon_r = 42.229$; $\rho = 1000 \text{ kg/m}^3$
 Phantom section: Flat Section

DASY5 Configuration:

- Probe: EX3DV4 - SN7601; ConvF(10.25, 10.25, 10.25) @ 835 MHz; Calibrated: 01.15.2025
- Sensor-Surface: 1.4mm (Mechanical Surface Detection)
- Electronics: DAE4 Sn1373; Calibrated: 12.31.2024
- Phantom: SAM-Twin; Type: QD 000 P40 CD; Serial: 1885
- Measurement SW: DASY52, Version 52.10 (4); SEMCAD X Version 14.6.14 (7501)

System Performance Check at Frequency 835 MHz Head Tissue/d=15mm, Pin=80 mW, dist=1.4mm (EX-Probe)/Area Scan (41x141x1): Interpolated grid: $dx=1.500 \text{ mm}$, $dy=1.500 \text{ mm}$
 Maximum value of SAR (interpolated) = 1.07 W/kg

System Performance Check at Frequency 835 MHz Head Tissue/d=15mm, Pin=80 mW, dist=1.4mm (EX-Probe)/Zoom Scan (7x7x7) (5x5x7)/Cube 0:
 Measurement grid: $dx=8\text{mm}$, $dy=8\text{mm}$, $dz=5\text{mm}$
 Reference Value = 34.22 V/m; Power Drift = -0.12 dB
 Peak SAR (extrapolated) = 1.24 W/kg
SAR(1 g) = 0.782 W/kg; SAR(10 g) = 0.490 W/kg
 Smallest distance from peaks to all points 3 dB below = 17.6 mm
 Ratio of SAR at M2 to SAR at M1 = 61.4%
 Maximum value of SAR (measured) = 1.04 W/kg



$$0 \text{ dB} = 1.04 \text{ W/kg} = 0.17 \text{ dBW/kg}$$

Test Laboratory: JYTSZ

Date: 2025/2/25

DUT: Dipole 1750 MHz; Type: D1750V2; Serial: SN:1177

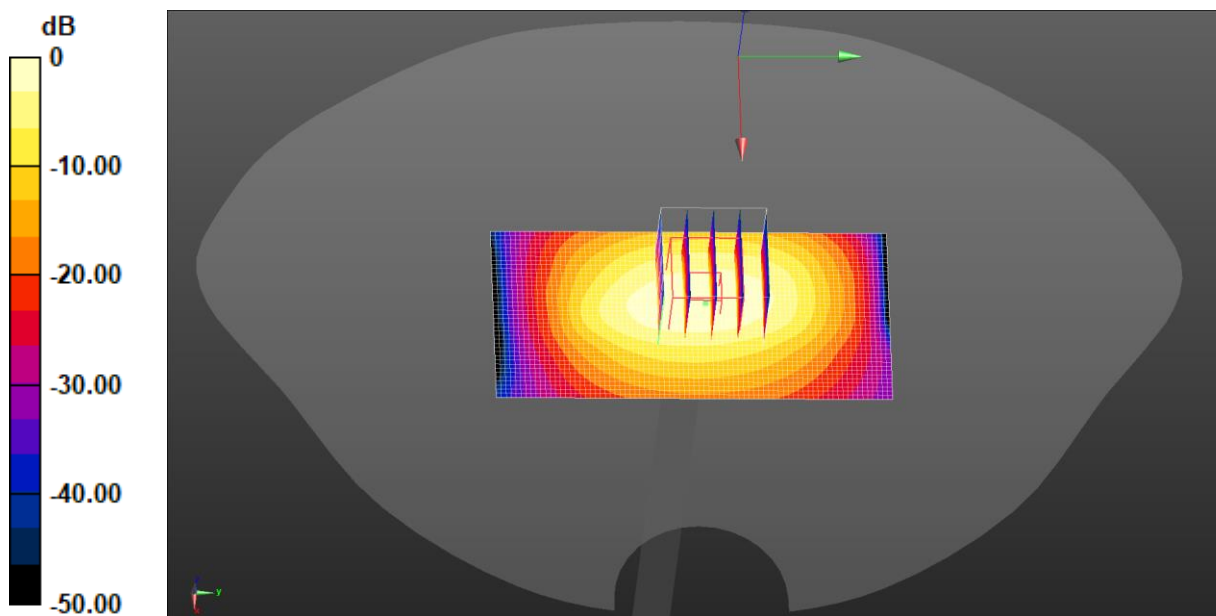
Communication System: UID 0, CW (0); Frequency: 1750 MHz; Duty Cycle: 1:1
 Medium parameters used: $f = 1750$ MHz; $\sigma = 1.349$ S/m; $\epsilon_r = 40.753$; $\rho = 1000$ kg/m³
 Phantom section: Flat Section

DASY5 Configuration:

- Probe: EX3DV4 - SN7601; ConvF(8.77, 8.77, 8.77) @ 1750 MHz; Calibrated: 01.15.2025
- Sensor-Surface: 1.4mm (Mechanical Surface Detection)
- Electronics: DAE4 Sn1373; Calibrated: 12.31.2024
- Phantom: SAM-Twin; Type: QD 000 P40 CD; Serial: 1885
- Measurement SW: DASY52, Version 52.10 (4); SEMCAD X Version 14.6.14 (7501)

System Performance Check at Frequency 1750 MHz Head Tissue/d=10mm, Pin=40 mW, dist=1.4mm (EX-Probe)/Area Scan (41x81x1): Interpolated grid: dx=1.500 mm, dy=1.500 mm
 Maximum value of SAR (interpolated) = 2.22 W/kg

System Performance Check at Frequency 1750 MHz Head Tissue/d=10mm, Pin=40 mW, dist=1.4mm (EX-Probe)/Zoom Scan (7x7x7) (5x5x7)/Cube 0:
 Measurement grid: dx=8mm, dy=8mm, dz=5mm
 Reference Value = 39.46 V/m; Power Drift = 0.03 dB
 Peak SAR (extrapolated) = 2.68 W/kg
SAR(1 g) = 1.43 W/kg; SAR(10 g) = 0.781 W/kg
 Smallest distance from peaks to all points 3 dB below = 10.7 mm
 Ratio of SAR at M2 to SAR at M1 = 53.5%
 Maximum value of SAR (measured) = 2.24 W/kg



0 dB = 2.22 W/kg = 3.46 dBW/kg

Test Laboratory: JYTSZ

Date: 2025/2/28

DUT: Dipole 1900 MHz; Type: D1900V2; Serial: SN:5d175

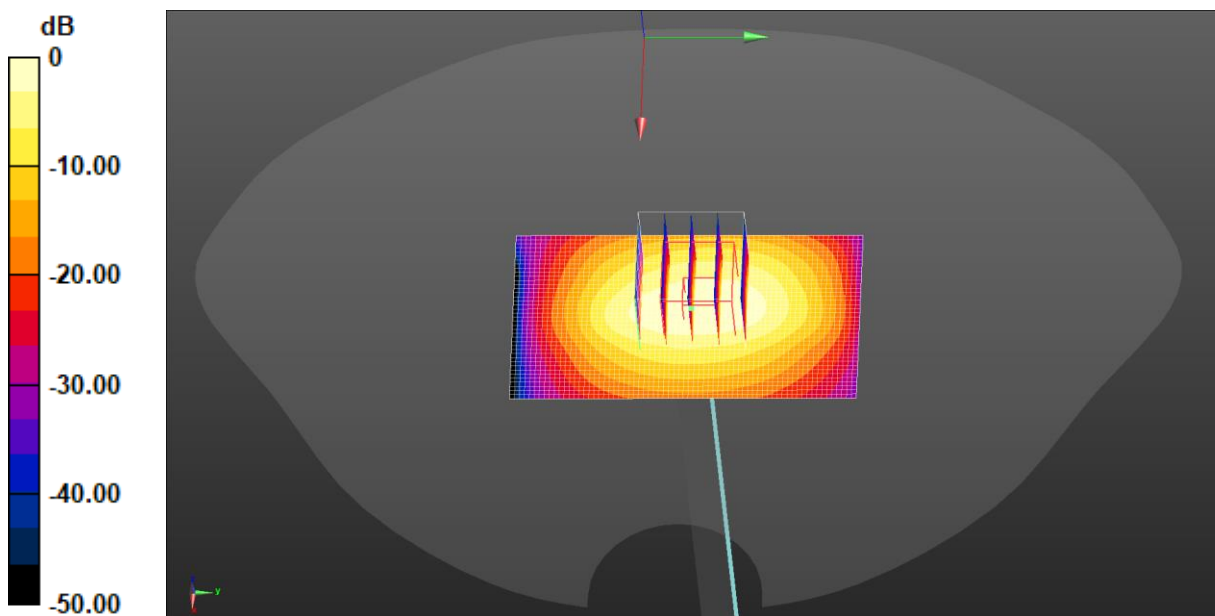
Communication System: UID 0, CW (0); Frequency: 1900 MHz; Duty Cycle: 1:1
 Medium parameters used: $f = 1900$ MHz; $\sigma = 1.376$ S/m; $\epsilon_r = 40.674$; $\rho = 1000$ kg/m³
 Phantom section: Flat Section

DASY5 Configuration:

- Probe: EX3DV4 - SN7601; ConvF(8.42, 8.42, 8.42) @ 1900 MHz; Calibrated: 01.15.2025
- Sensor-Surface: 1.4mm (Mechanical Surface Detection)
- Electronics: DAE4 Sn1373; Calibrated: 12.31.2024
- Phantom: SAM-Twin; Type: QD 000 P40 CD; Serial: 1885
- Measurement SW: DASY52, Version 52.10 (4); SEMCAD X Version 14.6.14 (7501)

System Performance Check at Frequency 1900 MHz Head Tissue/d=10mm, Pin=40 mW, dist=1.4mm (EX-Probe)/Area Scan (41x71x1): Interpolated grid: dx=1.500 mm, dy=1.500 mm
 Maximum value of SAR (interpolated) = 2.51 W/kg

System Performance Check at Frequency 1900 MHz Head Tissue/d=10mm, Pin=40 mW, dist=1.4mm (EX-Probe)/Zoom Scan (7x7x7) (5x5x7)/Cube 0:
 Measurement grid: dx=8mm, dy=8mm, dz=5mm
 Reference Value = 41.59 V/m; Power Drift = -0.07 dB
 Peak SAR (extrapolated) = 3.04 W/kg
SAR(1 g) = 1.59 W/kg; SAR(10 g) = 0.822 W/kg
 Smallest distance from peaks to all points 3 dB below = 9.6 mm
 Ratio of SAR at M2 to SAR at M1 = 51.6%
 Maximum value of SAR (measured) = 2.48 W/kg



0 dB = 2.51 W/kg = 4.00 dBW/kg

Test Laboratory: JYTSZ

Date: 2025/3/3

DUT: Dipole 2450 MHz; Type: D2450V2; Serial: SN:910

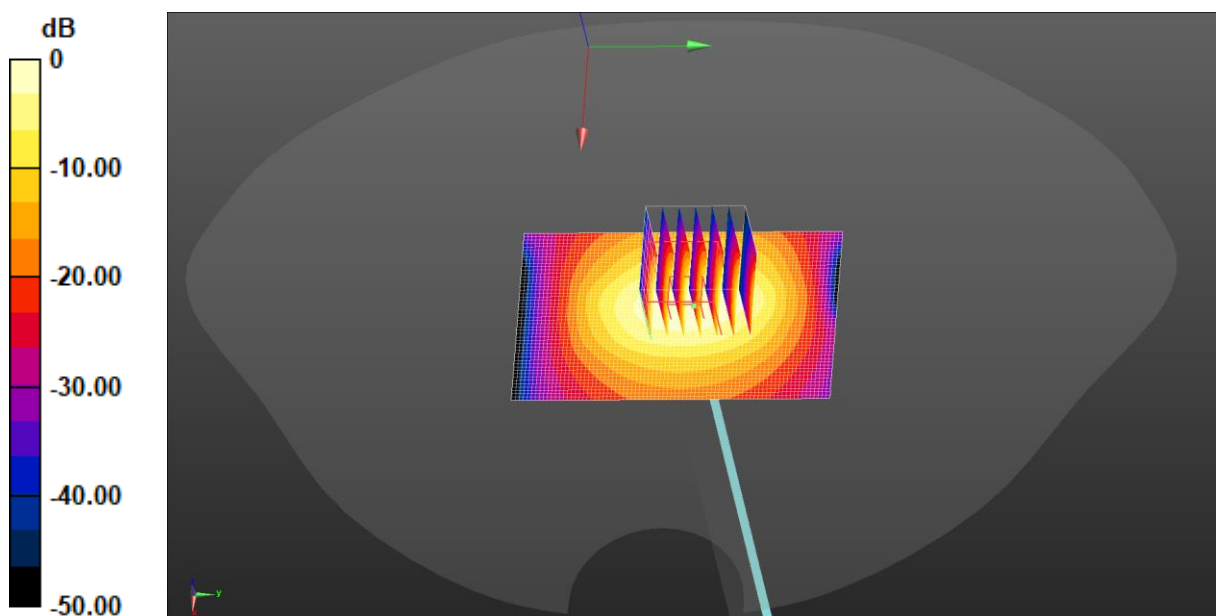
Communication System: UID 0, CW (0); Frequency: 2450 MHz; Duty Cycle: 1:1
 Medium parameters used: $f = 2450$ MHz; $\sigma = 1.769$ S/m; $\epsilon_r = 39.874$; $\rho = 1000$ kg/m³
 Phantom section: Flat Section

DASY5 Configuration:

- Probe: EX3DV4 - SN7601; ConvF(7.84, 7.84, 7.84) @ 2450 MHz; Calibrated: 01.15.2025
- Sensor-Surface: 1.4mm (Mechanical Surface Detection)
- Electronics: DAE4 Sn1373; Calibrated: 12.31.2024
- Phantom: SAM-Twin; Type: QD 000 P40 CD; Serial: 1885
- Measurement SW: DASY52, Version 52.10 (4); SEMCAD X Version 14.6.14 (7501)

System Performance Check at Frequency 2450 MHz Head Tissue/d=10mm, Pin=40 mW, dist=1.4mm (EX-Probe)/Area Scan (51x81x1): Interpolated grid: dx=1.200 mm, dy=1.200 mm
 Maximum value of SAR (interpolated) = 3.66 W/kg

System Performance Check at Frequency 2450 MHz Head Tissue/d=10mm, Pin=40 mW, dist=1.4mm (EX-Probe)/Zoom Scan (7x7x7)/Cube 0: Measurement grid: dx=5mm, dy=5mm, dz=5mm
 Reference Value = 42.17 V/m; Power Drift = 0.04 dB
 Peak SAR (extrapolated) = 4.52 W/kg
SAR(1 g) = 2.14 W/kg; SAR(10 g) = 0.971 W/kg
 Smallest distance from peaks to all points 3 dB below = 9 mm
 Ratio of SAR at M2 to SAR at M1 = 47.1%
 Maximum value of SAR (measured) = 3.42 W/kg



0 dB = 3.42 W/kg = 5.34 dBW/kg

Test Laboratory: JYTSZ

Date: 2025/3/3

DUT: Dipole 2600 MHz; Type: D2600V2; Serial: SN:1114

Communication System: UID 0, CW (0); Frequency: 2600 MHz; Duty Cycle: 1:1
 Medium parameters used: $f = 2600$ MHz; $\sigma = 1.931$ S/m; $\epsilon_r = 39.684$; $\rho = 1000$ kg/m³
 Phantom section: Flat Section

DASY5 Configuration:

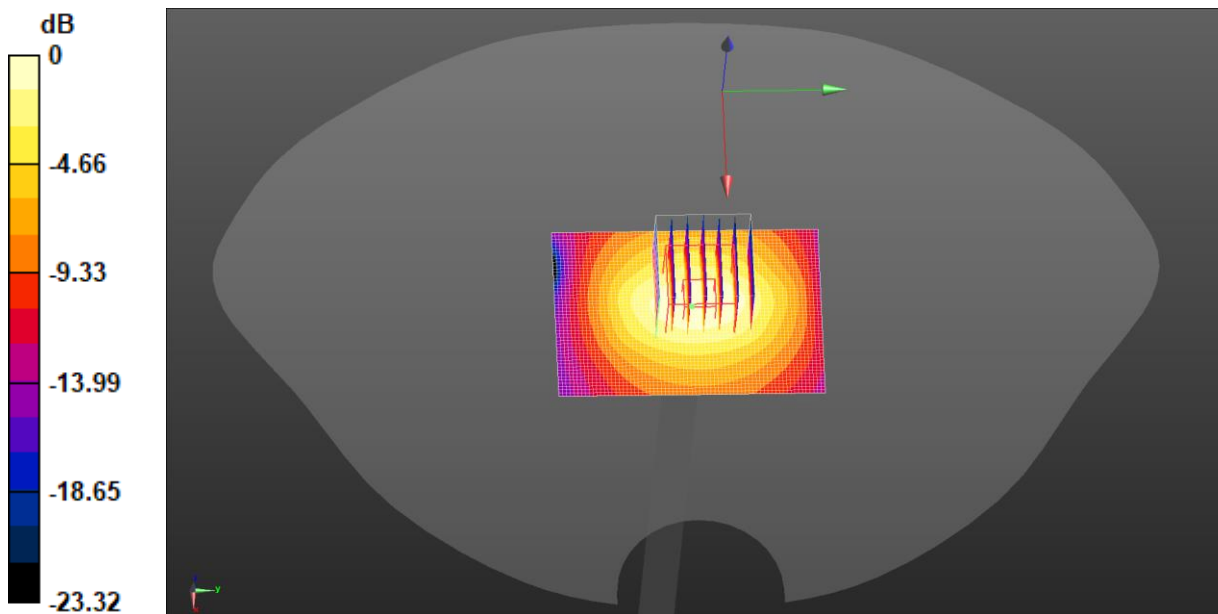
- Probe: EX3DV4 - SN7601; ConvF(7.66, 7.66, 7.66) @ 2600 MHz; Calibrated: 01.15.2025
- Sensor-Surface: 1.4mm (Mechanical Surface Detection)
- Electronics: DAE4 Sn1373; Calibrated: 12.31.2024
- Phantom: SAM-Twin; Type: QD 000 P40 CD; Serial: 1885
- Measurement SW: DASY52, Version 52.10 (4); SEMCAD X Version 14.6.14 (7501)

System Performance Check at Frequency 2600 MHz Head Tissue/d=10mm, Pin=40 mW, dist=1.4mm (EX-Probe)/Zoom Scan (7x7x7)/Cube 0: Measurement

grid: dx=5mm, dy=5mm, dz=5mm
 Reference Value = 43.82 V/m; Power Drift = -0.02 dB
 Peak SAR (extrapolated) = 4.83 W/kg
SAR(1 g) = 2.22 W/kg; SAR(10 g) = 0.992 W/kg
 Smallest distance from peaks to all points 3 dB below = 9 mm
 Ratio of SAR at M2 to SAR at M1 = 47.2%
 Maximum value of SAR (measured) = 3.71 W/kg

System Performance Check at Frequency 2600 MHz Head Tissue/d=10mm, Pin=40 mW, dist=1.4mm (EX-Probe)/Area Scan (51x71x1): Interpolated grid:

dx=1.200 mm, dy=1.200 mm
 Maximum value of SAR (interpolated) = 4.06 W/kg



$0 \text{ dB} = 3.71 \text{ W/kg} = 5.69 \text{ dBW/kg}$

Test Laboratory: JYTSZ

Date: 2025/3/6

DUT: Dipole D5GHzV2; Type: D5GHzV2; Serial: SN:1320

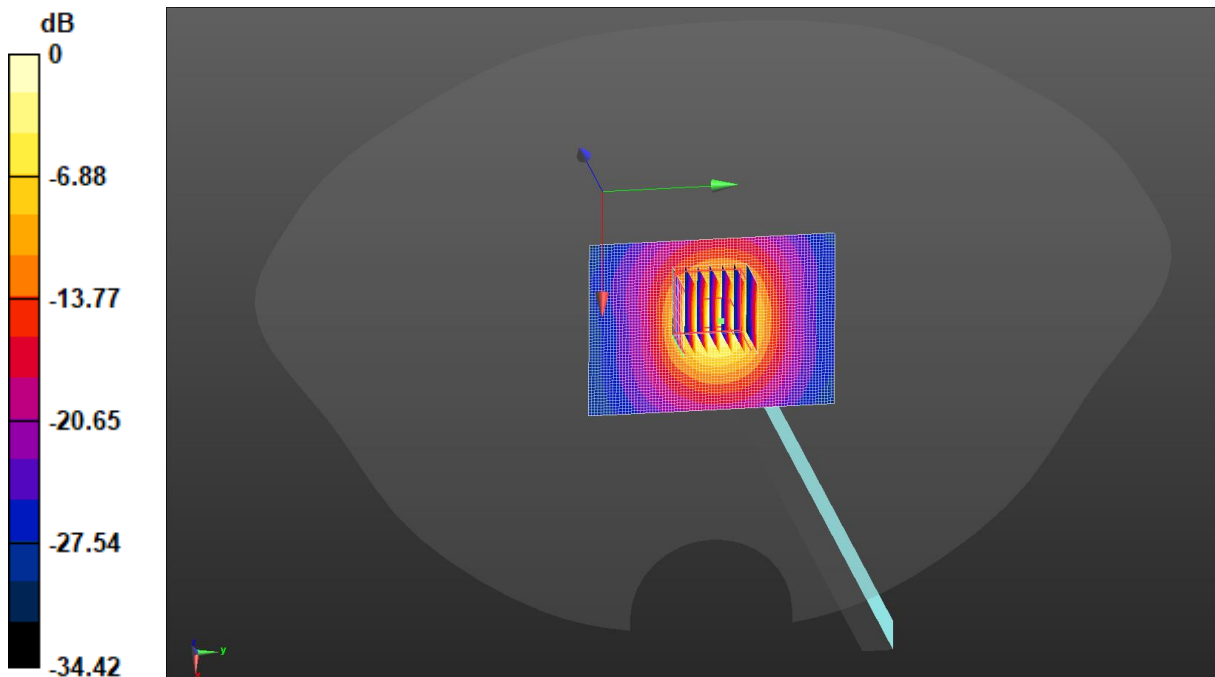
Communication System: UID 0, CW (0); Frequency: 5200 MHz; Duty Cycle: 1:1
 Medium parameters used: $f = 5200$ MHz; $\sigma = 4.702$ S/m; $\epsilon_r = 35.848$; $\rho = 1000$ kg/m³
 Phantom section: Flat Section

DASY5 Configuration:

- Probe: EX3DV4 - SN7601; ConvF(5.52, 5.52, 5.52) @ 5200 MHz; Calibrated: 2025/1/15
- Sensor-Surface: 1.4mm (Mechanical Surface Detection)
- Electronics: DAE4 Sn1373; Calibrated: 2024/12/31
- Phantom: SAM-Twin; Type: QD 000 P40 CD; Serial: 1885
- Measurement SW: DASY52, Version 52.10 (4); SEMCAD X Version 14.6.14 (7501)

System Performance Check at Frequency 5GHz Head Tissue/d=10mm, Pin=40 mW, dist=1.4mm (EX-Probe)/Area Scan (61x81x1): Interpolated grid: dx=1.000 mm, dy=1.000 mm
 Maximum value of SAR (interpolated) = 7.94 W/kg

System Performance Check at Frequency 5GHz Head Tissue/d=10mm, Pin=40 mW, dist=1.4mm (EX-Probe)/Zoom Scan (7x7x12)/Cube 0: Measurement grid: dx=4mm, dy=4mm, dz=2mm
 Reference Value = 43.10 V/m; Power Drift = 0.08 dB
 Peak SAR (extrapolated) = 12.5 W/kg
SAR(1 g) = 3.15 W/kg; SAR(10 g) = 0.916 W/kg
 Smallest distance from peaks to all points 3 dB below = 7.4 mm
 Ratio of SAR at M2 to SAR at M1 = 54.9%
 Maximum value of SAR (measured) = 7.84 W/kg



0 dB = 7.84 W/kg = 8.94 dBW/kg