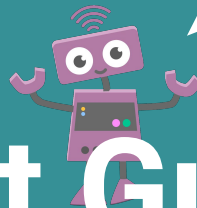


# Taneshi

Home learning for every school-age child

Help your kid learn  
and play with their  
first real computer!

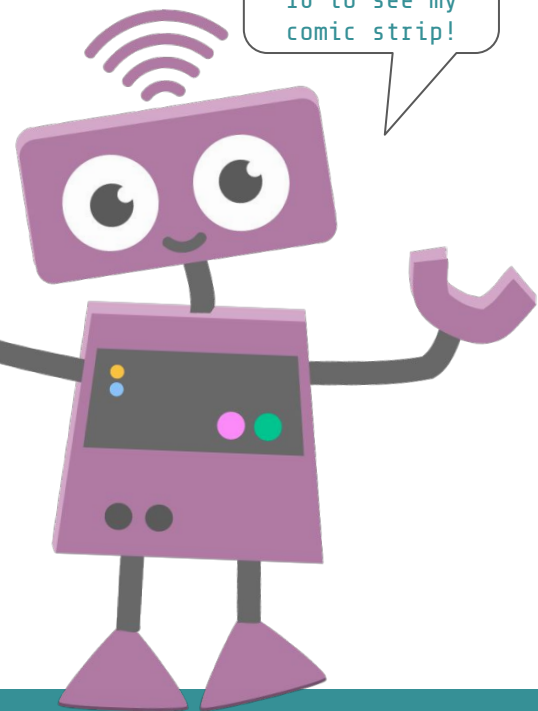


# Quick Start Guide



# Taneshi Scholar





# Welcome to the Tanoshi Family!

## CONTENTS

Overview of the Scholar Computer .....	4
Parental Controls .....	6
Setting up your Tanoshi Scholar .....	7
Technical Specifications .....	10
Product Registration .....	11
Warranty .....	12
Frequently Asked Questions .....	15
<b>Tanoshi-bot</b> .....	<b>16</b>
Contacting Tanoshi .....	17

**OUR GOAL** is to provide an amazing digital education for all kids.

Learn more about our mission at [www.tanoshi.com](http://www.tanoshi.com)

SERIAL NUMBER: \_\_\_\_\_

# A TOOL, NOT A TOY!

*Tanoshi Scholar is a real laptop computer and should be treated with care.*

To get the maximum life out of your device, please share the following tips with your kid:

**A**

Store your computer in a safe place, away from younger kids

**B**

Before moving your computer:

1

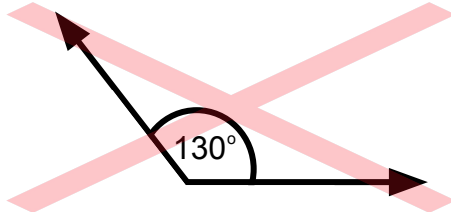
Safely unplug the power cord

2

Remove the keyboard or fold the computer closed

**C**

Do not treat your computer like a toy



**WARNING:**

WHEN KEYBOARD IS ATTACHED, DO NOT OPEN THE DEVICE MORE THAN 130 DEGREES. THIS MAY CAUSE DAMAGE NOT COVERED BY WARRANTY.

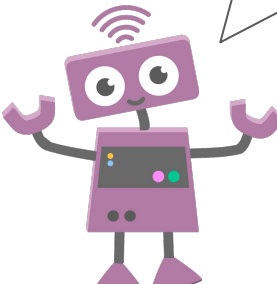
# Scholar Overview

## WHAT'S IN THE BOX

- 10.1in. HD Android Tablet
- Detachable Keyboard with Trackpad
- USB-C Charging Cable
- AC Adapter

## PLEASE CHARGE BEFORE USING

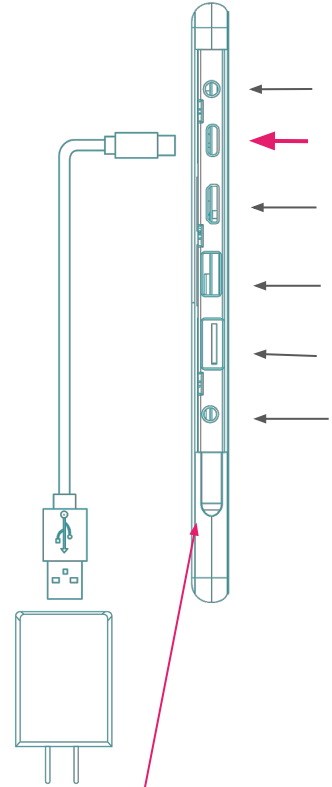
1. Open dust shield on tablet (Adult help may be required. If the dust shield is tight, you can use a penny to open it)
2. Connect AC Adapter to USB-C cable
3. Insert USB-C plug into USB-C outlet on device
4. Plug in AC Adapter to wall outlet/power source



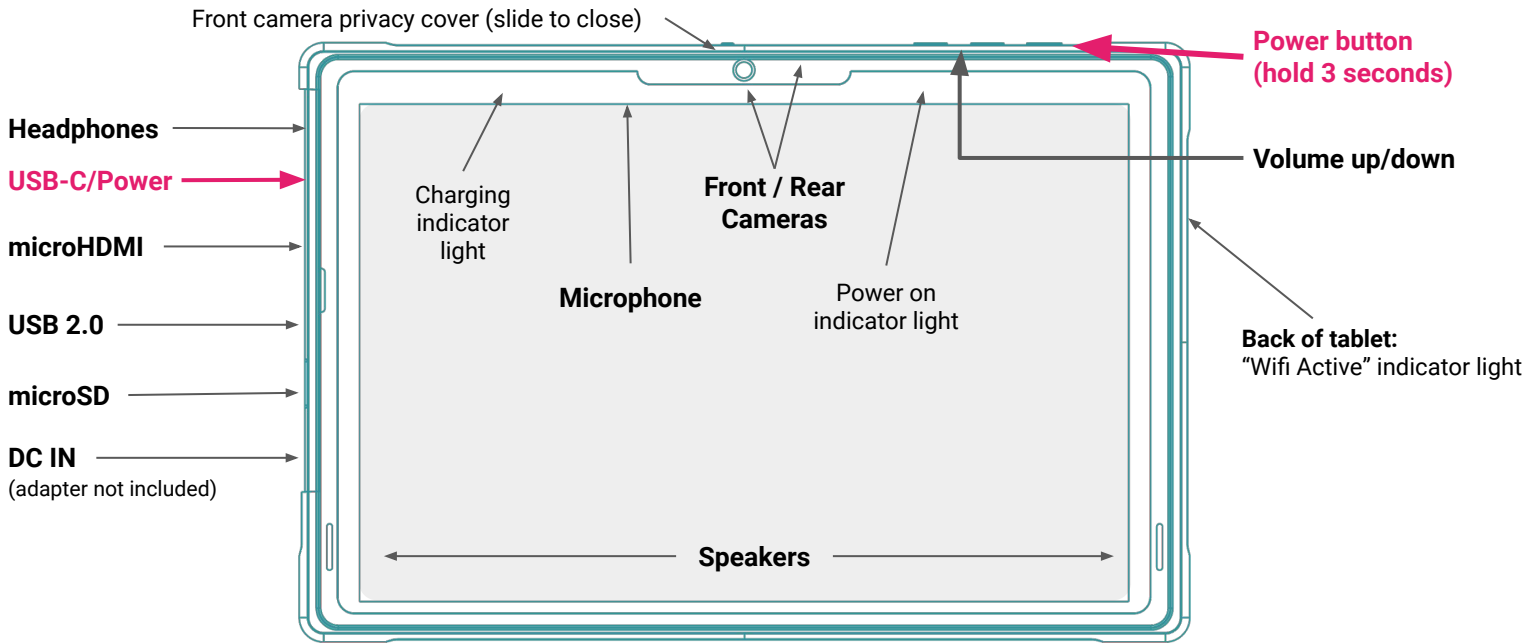
To turn the computer **ON**:  
Press and hold the power button until the green light flashes.

To put the computer to **SLEEP**: Press the power button.

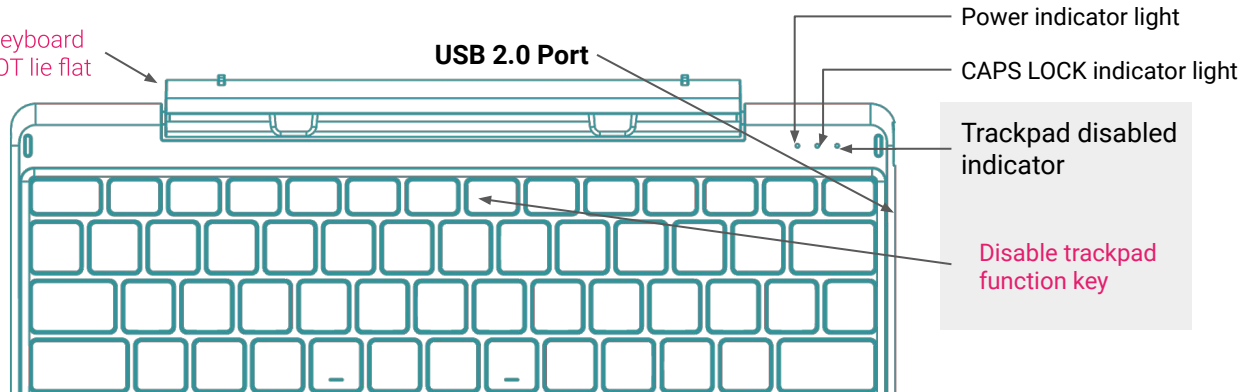
To conserve battery, turn the computer **OFF**: Hold down the power button and select "Power Off" from the menu that appears.



*Open dust shield for port access*



**WARNING:** Keyboard hinge does NOT lie flat



# A Note About Parental Controls

The setup process will take about 15-20 minutes.

**We recommend that you spend some time setting up the device the way you like before handing it to your kid.**

Every family and kid is different, and you can talk with your kid about the choices you are making.

Once you have configured the tablet, you can adjust settings from your own smartphone or computer.

As your kid learns more about how to use their computer, you may want to modify the settings.

**Some questions to consider when you set up parental controls:**

## **SCREEN TIME**

How much time will your kid use the computer each day? Are there certain days or times when they might have more or less time?

## **APPS**

Some apps have a primarily educational role, and some apps are primarily for entertainment. Will they need certain apps for school, or are there trusted apps you'd like to install ahead of time? Are there apps that you want to restrict or allow? Will your kid be able to browse the app store? Kids will need your permission to download new apps, and you can control paid apps and in-app payments.

## **WEB BROWSING**

This device uses Google Chrome with Safe Search, but you will want to consider unsupervised web browsing for your kid. You can adjust which websites are allowed or prohibited.

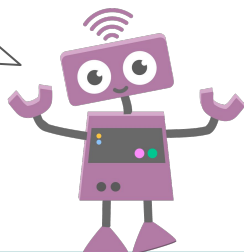
**For more info about parenting and technology, check out Common Sense Media at [commonsensemedia.org](https://www.commonsensemedia.org)**

# Setting up your Tanoshi Scholar

## Before getting started, you will need:

- Local WiFi network and password Information
- A parent's new/existing Google Account
- A fully charged Tanoshi Scholar!

In just a few minutes, you'll be able to write your first computer program!



These instructions are for setting up the computer for a kid **under the age of 13**.

**If you are setting this device up for an adult**, disregard this section and set up the device using your new/existing Gmail account.

1

*This step can be done with your kid!*




## Turn on your device


Turn on your device by holding the power button for 3 seconds. Now, we're ready to

**GET STARTED**

## Connect to your local WiFi network, then "Set up as new"

Get your tablet ready to go. How would you like to set it up?

 **Keep your apps & data**  
Restore a backup or copy from a device

 **Set up as new**  
Get a fresh start

**NOTE:** This Setup Process is subject to change. Please see [tanoshi.com/FAQ](http://tanoshi.com/FAQ) for the latest information



## Create a NEW Google Account for your kid to use that will be managed by Family Link (if they don't already have a managed account)

Google  
Sign in  
with your Google Account. [Learn more](#)

[Forgot email?](#)

Create account

For myself  
For my child

Next

Google

### Create a Google Account for your child

You'll be able to manage screen time, apps, and more with the Google Family Link app

- Help choose what's okay to explore, buy, and watch
- See how much apps are used
- Remotely lock devices when it's time to play, study, or sleep

No thanks

Yes, continue

You'll need to provide your kid's name, age, gender, and create a custom username for their account. This account will be linked with a parent's Google Account in the next step. Be sure to enter your kid's real age! **If the age entered is 13 or over, the Family Link parental controls will not be activated.**

If your kid already has a personal Google Account and they listed their age as less than 13 (NOT a school account, which you can add later), you can use that instead.





## Sign in with an existing parent Google Account, and verify that you are an adult

This will link the devices and let the parent manage the Tanoshi Scholar device settings. We recommend using a Google Account already active on the parent's phone.

In this step, you will be providing parental consent for the creation of your child's Google Account managed by Family Link. **This step may require you to provide a credit card to verify that you are an adult.**

Google

### Parent sign in

Google Accounts for children under 13 need to be linked to a parent.

Google will verify you're a parent by checking some of your Google Account info. [Learn more](#)

Next



To install Family Link on a parent's phone, it must be running Android™ 5.0 or later, or iOS 9 or later.

Google

### Get the Family Link app

Almost done! To manage  device, install Family Link.

- Recommended**  
Install for you and Tanosh  
Get Family Link on your devices & Tanosh's device. You can keep track of screen time, approve app requests, and see his location.
- Install for Tanosh only**  
You won't be able to keep track of screen time, approve app requests, or see his device's location.

Next

## Select apps and services, configure parental controls, and install Family Link on your phone

Feel free to spend some time now configuring the device, you can always change and add to these settings on your phone or on your kid's device later!

# Technical Specifications

Display	10.1" HD Touchscreen (1280x800) with tempered glass film
Keyboard	Full kid-size QWERTY keyboard with emoji hotkeys and trackpad
Platform	Android 10 with Google Apps and Parental Controls
CPU	64-bit Quad Core Processor, 1.3GHz
GPU	PowerVR 660Mhz
RAM	2GB
Storage (built-in)	32GB
Storage (expandable)	Micro SD up to 32GB
USB Ports	USB on keyboard (data transfer) USB on tablet (data transfer / charge)
WiFi	Dual Band 802.11 abgn (2.4 GHz and 5 GHz)
Audio jack	3.5mm Stereo
Audio mic	Single
Audio speakers	Dual Stereo
Battery	6000 mAh
Bluetooth	BT4.2
Camera (front)	2.0 MP
Camera (rear)	5.0 MP
Power	USB-C (included) or pin charging port (5Vx2A)

Wow, did you know that I have some of these parts too?

I have a CPU for a brain, and my Storage and RAM help me to remember things.

I have cameras for eyes, and a microphone for ears! My software gives me instructions for how to do things like talk, move and dance!

I also have a battery. When it needs to be recharged, I get very sleepy... Do you have a battery too?

