

A photograph of a woman and a young boy in a kitchen. The woman is on the left, wearing a white lace-trimmed top and an apron, looking towards the boy. The boy is on the right, wearing a blue and white striped polo shirt, smiling and holding a stack of plates. In the foreground on the right, a grey Celios water purifier is visible. The background shows a kitchen counter with various items like a wooden knife block and a coffee maker. The Celios logo is overlaid in the top right corner of the image.

celios®

# G200 User Guide

## THANK YOU

# For purchasing your G200 Advanced Air Purifier

Our mission is to protect the lungs of those you love by bringing pure, safe air to those most susceptible to poor air quality. The unique advantage of our proprietary, patented technology is the ability to capture ultrafine particulate matter down to 10 nanometers in size with a portable, lightweight device.

*EASY TO PUT TOGETHER, NO TOOLS REQUIRED!*

If you have any questions, please contact our Customer Care team at 1-833-CELIOS1 or [customer.care@celios.com](mailto:customer.care@celios.com)

READ AND SAVE THESE INSTRUCTIONS

version 201104\_v1

## Table Of Contents

---

G200 PACKAGE CONTENTS	6
• CELIOS G200 PRODUCT SPECIFICATIONS.....	7
• IMPORTANT SAFETY INFORMATION.....	8
WHERE TO PLACE YOUR G200	10
SETTING UP YOUR G200	12
• INSTALLING THE AIR FILTERS .....	12
• INSTALLING THE LITHIUM ION SMART BATTERIES.....	17
• SETTING UP THE REMOTE CONTROL.....	22
REMOTE CONTROL SETTINGS	25
CORE PANEL DESCRIPTIONS	28
CLEANING YOUR G200	29
G200: ALARMS & NOTIFICATIONS	30
TROUBLESHOOTING	32
CELIOS LIMITED WARRANTY	34



## G200 Package Contents

1. G200 Core
2. Main Stand
3. Mini Stand
4. Core Filter
5. Carbon Filters
6. Pre Filters
7. Lithium Ion Smart Batteries
8. Remote Control
9. Power Adapter
10. AAA batteries\*
11. User Manual\*



\*Not shown

## CELIOS G200 Product Specifications

Power Requirements:	DC input 15V, 4A ; Power brick 100-240V, 50-60Hz, 1.5A
AC Power Usage:	Idle - 0.6W, Speed 1 - 2.5W, Speed 2 - 3.8W, Speed 3 - 6.5W, Speed 4 - 22W
Dimensions (with main stand):	14.125" X 5.75" X 10.5"
Dimensions (with mini stand):	12.375" X 4" X 9.5"
Weight:	G200 Core Unit w/out batteries: 3lb 5oz G200 Core Unit w/ batteries: 4lb G200 Main Stand: 3lb 10oz Mini Stand: 4 oz
Noise Level (dBA):	In G200 Main Stand : Speed 1 - 34, Speed 2 - 46, Speed 3 - 56, Speed 4 - 64 In Mini Stand : Speed 1 - 36, Speed 2 - 52, Speed 3 - 62, Speed 4 - 71
3 Stage Filtration:	Carbon Filter, Pre Filter and Core Filter
Filter Life Expectancy:	24 Hour Use - Pre Filter: 2 months, Carbon Filter: 2 months, Core Filter: 4 months 12 Hour Use - Pre Filter: 4 months, Carbon Filter: 4 months, Core Filter: 8 months
Certifications:	 

## READ AND SAVE THESE INSTRUCTIONS

### IMPORTANT SAFETY INFORMATION

**WARNING:** To Reduce The Risk Of Fire Or Electric Shock, Do Not Use This Fan With Any Solid-State Speed Control Device.

**WARNING:** Unplug or disconnect the appliance from the power supply before servicing.

**WARNING:** The appliance is only to be used with the power supply unit provided with the appliance and it must only be supplied at safety extra low voltage corresponding to the marking on the appliance.

**WARNING:** NOT SUITABLE FOR USE WITH SOLID-STATE SPEED CONTROLS.

**AVERTISSEMENT:** NE CONVIENT PAS A DES REGULATEURS DE VITESSE A SEMI-CONDUCTEURS.

**DO NOT** operate any fan with a damaged cord or plug. Discard fan or return to an authorized service facility for examination and/or repair.

**DO NOT** run cord under carpeting. Do not cover cord with throw rugs, runners or similar covers. Do not route cord under furniture or appliances. Arrange cord away from the traffic area and where it will not be tripped over.

**DO NOT** allow children to operate the G200 or play near the G200.

**DO NOT** operate if the power cord is damaged. Only plug the power cord into a standard electrical outlet.

**DO NOT** use outdoors.

**DO NOT** immerse the G200 in liquid and do not handle the G200 with wet hands.

**DO NOT** insert a finger or foreign object into the airflow openings.

**DO NOT** use the G200 in toxic or explosive environments or where flammable or combustible gases are present.

This device complies with Part 15 of the FCC Rules. Operation is subject to the following two conditions:

(1) This device may not cause harmful interference, and (2) This device must accept any interference received, including interference that may cause undesired operation

**CAUTION:** The user is cautioned that changes or modifications not expressly approved by the party responsible for compliance could void the user's authority to operate the equipment.

Note: This equipment has been tested and found to comply with the limits for a Class B digital device, pursuant to part 15 of the FCC Rules. These limits are designed to provide reasonable protection against harmful interference in a residential installation. This equipment generates, uses and can radiate radio frequency energy and, if not installed and used in accordance with the instructions, may cause harmful interference to radio communications. However, there is no guarantee that interference will not occur in a particular installation. If this equipment does cause harmful interference to radio or television reception, which can be determined by turning the equipment off and on, the user is encouraged to try to correct the interference by one or more of the following measures:

- Reorient or relocate the receiving antenna.

- Increase the separation between the equipment and receiver.
- Connect the equipment into an outlet on a circuit different from that to which the receiver is connected.
- Consult the dealer or an experienced radio/TV technician for help.

This equipment complies with FCC's RF radiation exposure limits set forth for an uncontrolled environment. The antenna(s) used for this transmitter must be installed and operated to provide a separation distance of at least 20 cm from all persons and must not be collocated or operating in conjunction with any other antenna or transmitter. Installers must ensure that 20 cm separation distance will be maintained between the device (excluding its remote) and users.

#### **User Servicing Instructions:**

Grasp plug and remove from the receptacle or other outlet device. Do not unplug by pulling on cord.

Prior to cleaning or other maintenance the appliance must be disconnected from the power outlet.

#### **Replacement Battery Guidelines:**

- Batteries must be installed in accordance with Celios guidelines.
- Only use certified rechargeable lithium ion Celios Smart batteries.
- Do not use non-rechargeable batteries.
- Worn-out or damaged batteries must be disposed of properly at a qualified recycling center.

- If you have a leaky battery remove in a well-ventilated area. Wear household gloves and glasses. Using a toothbrush or cotton swab, remove battery leakage from the electrical contacts. Make sure the electronic device is completely dry before trying a new battery.

#### **Disposal and Recycling instructions for Battery:**

- A battery operated air purifier with integral batteries or a separate/detachable battery pack shall be recharged only with the specified charger for the battery. A charger that may be suitable for one type of battery may create a risk of fire when used with another battery.
- Use battery-operated fan only with specifically designated battery pack. Use of any other batteries may create a risk of fire.
- When battery pack is not in use, keep it away from other metal objects such as paper clips, coins, keys, nails, screws, or other small metal objects that can make a connection from one terminal to another. Shorting the battery terminals together may cause sparks, burns, or fire.
- Do not incinerate this air purifier, even if it is severely damaged. The batteries may explode in a fire. Dispose of the air purifier in accordance with the following instructions:

#### **Instructions for disposal of the product:**

Proper disposal of this product helps prevent waste and potential negative effects on the environment and human health. For detailed recycling information, please contact your local domestic waste disposal service or the store that purchased this product.

## Where to place your G200

The Celios G200 is designed to purify air in small rooms or personal spaces such as your bedroom, office, or car to create a zone of purified air around you. The G200 comes with a Main Stand and a Mini Stand. You can easily move the G200 Core between its two stands.



### Main Stand

The Main Stand includes a Carbon Filter that removes Volatile Organic Compounds (VOCs) which include gasses and odors such as those emitted from common household products. The Main Stand provides sound dampening and offers higher fan output when using the power adapter.



### Mini Stand

The Mini Stand offers convenience and portability to easily dock your G200 Core air purifier with a small footprint, providing an unobstructed air flow at the Core air intake when the Core is not used with the Main Stand.

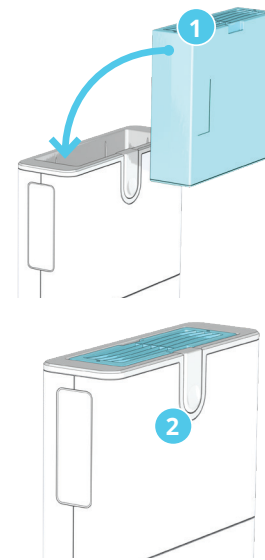
Once the batteries are charged, the G200 Advanced Air Purifier can be used anywhere you choose for up to 24 hours unplugged. You can place the unit on almost any flat surface, with or without a stand. When you are not using a stand, just be sure to place the G200 on its side so the honeycomb grill on the bottom of the Core is not obstructed and is free to pull in air.



## Setting up your G200

### STEP 1: INSTALLING THE AIR FILTERS

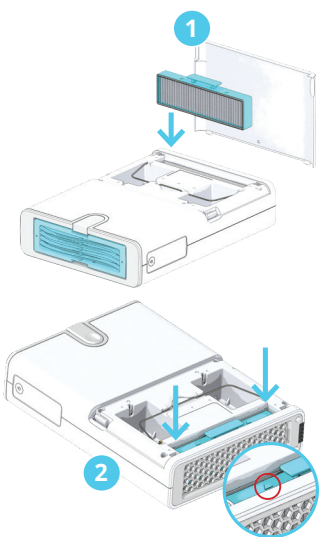
The G200 uses three different powerful air filters. All are colored blue for easy identification. You will need to order a G200 Filter Pack about every 8 months. Each pack contains one Core Filter, two Carbon Filters, and two Pre Filters. To order a G200 air filter kit, please visit our website at [www.Celios.com](http://www.Celios.com).



#### Install the Core Filter

The G200 comes with one Core Filter. This patented mechanical filter captures ultrafine particulates down to 10 nanometers in size. You will need to replace your Core Filter about every 8 months.

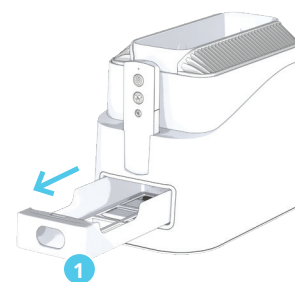
1. Slide the Core Filter into the G200 Core with the grill facing up.
2. The filter clicks into place when properly installed.



### Install the Pre Filter

The G200 comes with two Pre Filters. You will install one and save one for future use. The Pre Filter is made from material often found in HVAC systems, specifically designed to capture large airborne particles such as dust, pollen, and pet dander. You will need to replace your Pre Filter about every 4 months.

1. Turn the G200 Core over so the Celios logo is facing down. Remove the back panel at the bottom of the unit.
2. Slide the Pre Filter into place with the arrows pointing toward the top of the Core. Make sure to push the Pre Filter completely into the Core so that the back panel can fully close.



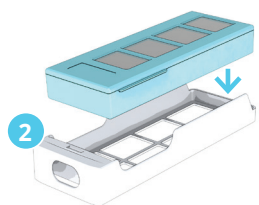
### Install the Carbon Filter

The G200 comes with two activated granular Carbon Filters. You will install one now and save one for future use. The Carbon Filter removes gasses, odors, and VOCs emitted from common household products. You will need to replace your Carbon Filter about every 4 months.

**Important:** The G200 Core should be removed from the Main Stand when installing or removing the Carbon Filter.

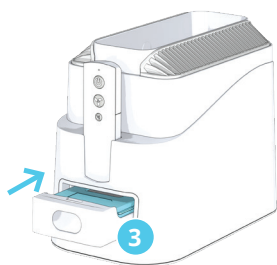
1. Remove the Carbon Filter tray from the Main Stand.





1. Place the Carbon Filter into the tray as shown.
2. Slide the tray back into position in the G200 Main Stand.

**Note:** The Carbon Filter tray will click when fully installed.



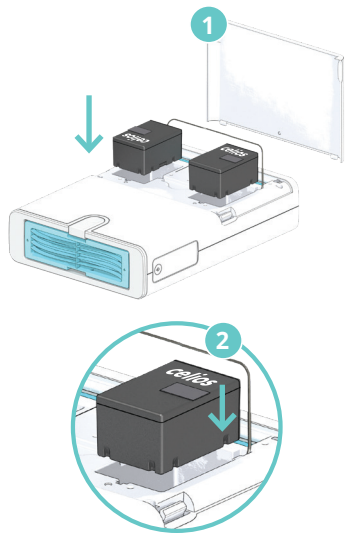
## STEP 2:

### INSTALLING THE LITHIUM ION SMART BATTERIES

The G200 runs on either outlet power or Lithium Ion Smart Batteries, which are included with your G200 purchase. These batteries are hot swappable, which means you can remove either of them without shutting down the G200 or interrupting air purification.

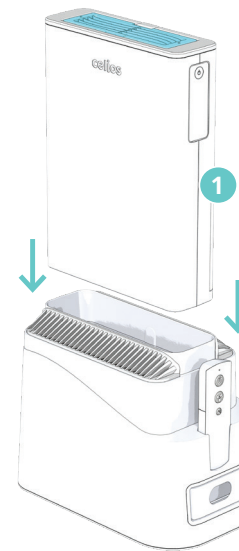
The expected life of each Celios Lithium Ion Smart Battery is approximately 2-3 years. To purchase additional batteries, please visit our website at [www.Celios.com](http://www.Celios.com).





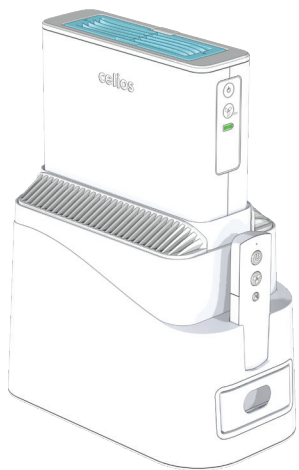
### Install Batteries into the G200 Core

1. There are two slots for the Lithium Ion Smart Batteries above the Pre Filter you just installed. Pull the silver wire and rotate it upwards.
2. Take one Lithium Ion Smart Battery and align the battery slots to the slots within the unit. The unit will beep when the first battery is correctly installed.
3. Take the second battery and do the same. Note you will not hear a beep with the second battery. When installed properly the Celios logo on the batteries will be as pictured in the illustration.
4. Place the silver wire back into position and replace the back cover onto the G200 Core unit.




### Dock the G200 Core in the Main Stand

1. Plug the Power Adapter into the Main Stand and then to a powered electrical outlet.
2. Slide the G200 Core into the Main Stand. The control panel on the Core will be facing to the same side as the Remote.
3. When you correctly dock the G200 Core in the Main Stand, the unit will beep (whether you have AC power or not). If the G200 Core is not properly installed, it will not beep and will not sit properly within the Main Stand.



### Charge the batteries


1. After turning on the G200 Core, the battery life indicator  on the control panel shows that the batteries are charging. When the batteries are fully charged or when there are no batteries in the G200 Core, the battery life indicator light will turn off.
2. You can also charge the batteries outside of the Main Stand by plugging the Power Adapter directly into the G200 Core.

**Note:** The G200 can operate:

- On one or both of its batteries
- Without batteries and power provided by the Power Adapter

### Charging the batteries the first time


Properly charging the batteries will allow maximum runtime and battery life. The following procedure should be followed on the first charge of any new batteries.

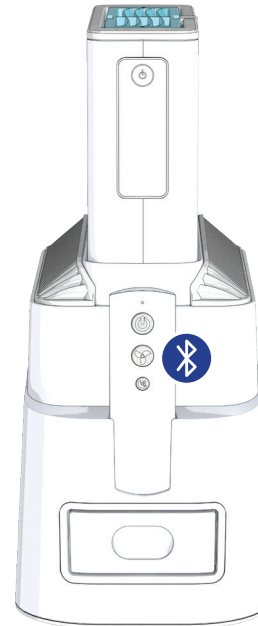
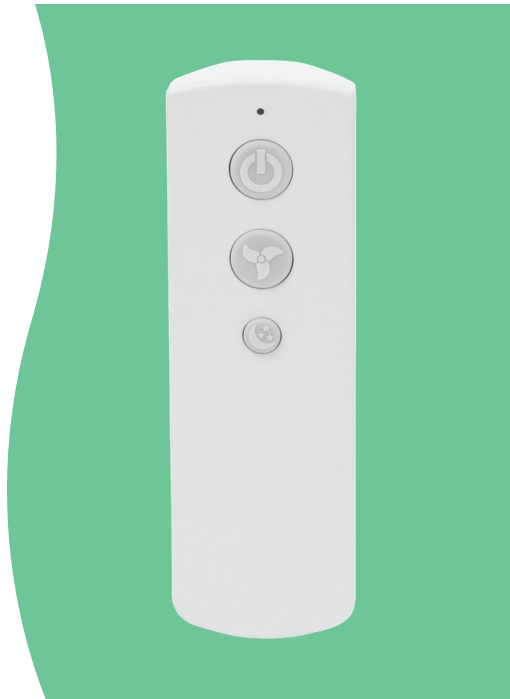
1. After inserting batteries, connect the Core with the supplied power adapter. The Core can be docked in the Main Stand or plugged in directly.
2. Allow the batteries to charge until full . You may run the G200 on any setting while charging.
3. Turn the unit on to Speed 1 and remove the power adapter plug.
4. Allow the unit to fully discharge and power off. This operation can take up to 30 hours.
5. Fully charge the unit again per Steps 1 and 2 above. The batteries are now properly charged for maximum performance.

This procedure can be repeated if the battery life is lower than expected. If this procedure fails to increase battery life, contact Customer Care at 1-833-CELIOS1 or [customer.care@celios.com](mailto:customer.care@celios.com).

### STEP 3:

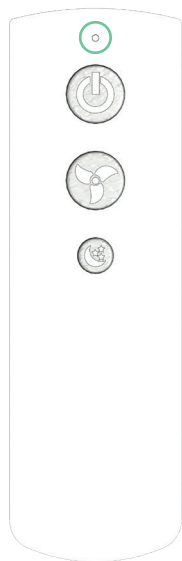
#### SETTING UP THE REMOTE CONTROL

The G200 uses a  Bluetooth remote control device, which can work within a 75 ft range. When not in use, store the remote control in the slot on the front of the G200 Main Stand.



#### Pair the Remote Control with the G200 Core

1. Install the provided two AAA batteries into the Remote Control.
2. With the G200 powered on, press and hold the Core power button for 6 seconds. The Core will beep and its power button will begin to flash, indicating that it has entered Bluetooth pairing mode.
3. While the Core is in pairing mode, turn on the Remote Control by pressing its power button. The light on the Remote will flash briefly, indicating that it has also entered Bluetooth pairing mode.



4. After 6 seconds, both the Core and the Remote Control light will stop flashing. The two are now paired.

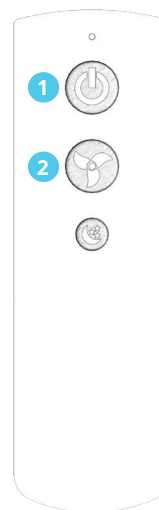
The Remote Control will stay paired to the G200 Core as long as it has power.

**Note:** If the Remote Control is not paired properly, the light will blink. Please try again.

#### Troubleshooting:

If you have problems with pairing your Remote, please visit [www.Celios.com/Support](http://www.Celios.com/Support) or call us at 1-833-CELIOS1

## Remote Control Settings



You can control the G200 settings from:

- The control panel on the Core
- The G200 Remote Control





### 1. POWER BUTTON

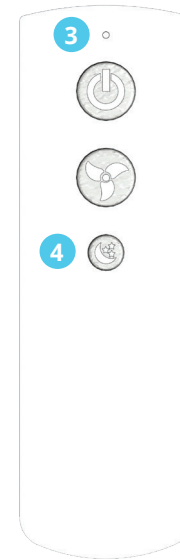
Turns the G200 on and off

### 2. FAN SPEED BUTTON

The G200 has four fan speeds. Each delivers a different speed of air purification. To select the fan speed you desire, press the fan speed button on the control panel to cycle through the speed settings. You can also use the Remote Control to cycle through the fan speeds. When you power on the G200, the device will remember the last used speed setting.

The Celios G200 Advanced Air Purifier operates at four fan speeds, so you can adjust the power to best meet your needs.

G200 FAN SPEED	AIR PURIFICATION AND NOISE LEVEL
<b>Background Mode:</b> Typically used while you are in the room	
<b>Speed 1</b> 	Ideal for desk-side use or other quiet settings
<b>Speed 2</b> 	Perfect white noise level for sleep
<b>Turbo Mode:</b> Typically used while you are not in the room	
<b>Speed 3</b> 	Aggressive cleaning
<b>Speed 4</b> 	Most powerful air purification



### 3. INDICATOR

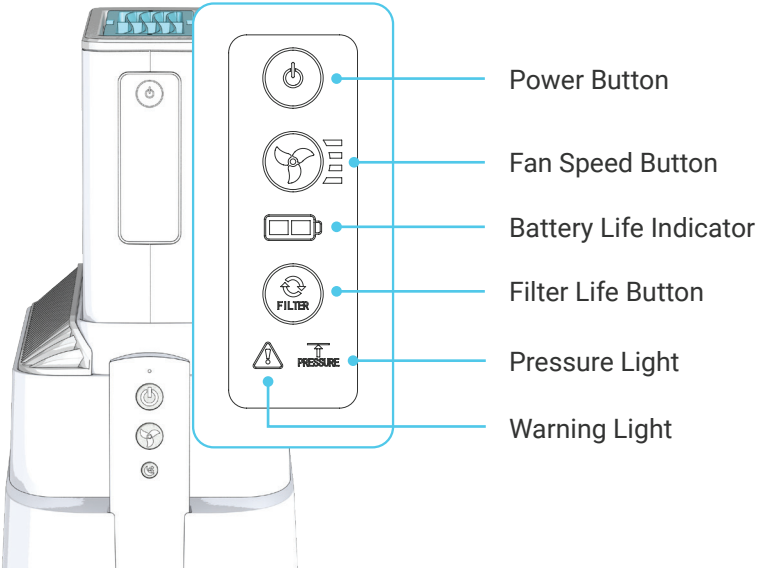
With functioning AAA batteries, the indicator will illuminate with each press of a button on the Remote Control. The light also flashes during pairing. If the light does not illuminate, please check or change the AAA batteries.

### 4. NIGHT MODE BUTTON

The night mode button controls the G200's display panel illumination. This option is only accessible via the remote control. To operate the night mode:

1. Press the night mode button on the Remote Control to turn off the display lights.
2. Press the night mode button again to turn the display lights to 100%.
3. Pressing the button a third time will turn the display lights to 50%.

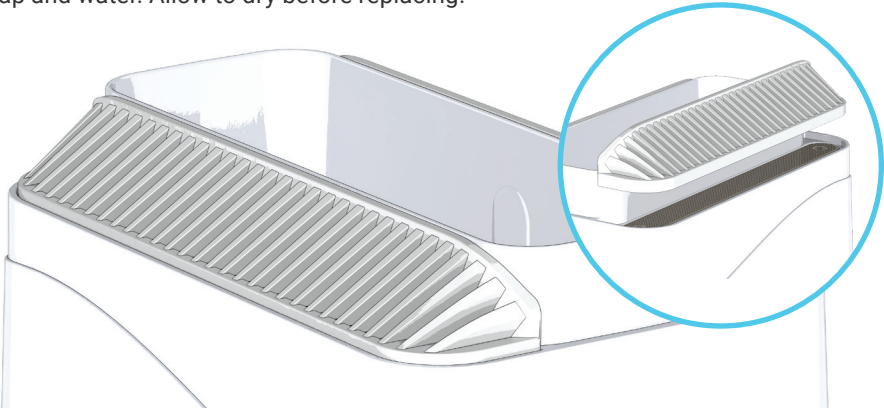
## Core Panel Description



## Cleaning your G200

### CLEANING THE G200 GRILLS

If you notice that the G200 airflow is weaker than expected, or if the grey grills on the top of the Main Stand look dirty, then it is time to clean the grills. The grills are magnetically attached and can be removed from the Main Stand and cleaned with soap and water. Allow to dry before replacing.







## G200: Alarms & Notifications

- When you correctly dock the G200 Core in the Main Stand with power, the unit will beep.
- When you install the first battery (partially or fully charged) the G200 will beep to let you know that the battery is installed correctly.
- If the G200 becomes blocked and there is no airflow an alarm will sound.
- If the G200 Core Filter is missing, not seated properly or has become saturated with filtered contaminants an alarm will sound.

**Under normal use (12 hours/day):** The Pre Filter and Carbon Filter should be changed every 4 months, while the Core Filter should be changed every 8 months.

**Under heavy use: (24 hours/day) :** The Pre Filter and Carbon Filter should be changed every 2 months, while the Core Filter should be changed every 4 months.

The G200 LED panel will display an alert when the filters are approaching or due to be changed:

Filter Life:	Alarm:	Light:	Symbol:	How to Pause Alarm:
Over 50%	No indication			
50%	60 Secs	Yellow Flashing		Quickly press Filter Button, light will remain on
20%	60 Secs	Red Flashing		Quickly press Filter Button, light will remain on
10%	60 Secs	Red Flashing	 	Quickly press Filter Button, light will remain on

Filter Life:	Action Needed:
50%	Replace Pre Filter and Carbon Filter
20%	Order filter replacement
10%	Replace Pre Filter, Carbon Filter and Core Filter



## Troubleshooting

Problem	Possible Cause	Solution
<b>Unit does not power on</b>	<ul style="list-style-type: none"> <li>Battery(ies) or AC adapter not installed</li> <li>Battery(ies) installed do not have charge</li> </ul>	<ul style="list-style-type: none"> <li>Install charged Batteries or connect to AC adapter</li> <li>Replace Batteries with charged ones or install AC adapter</li> </ul>
<b>Battery should be charging</b>	<ul style="list-style-type: none"> <li>Battery(ies) is(are) full</li> <li>No battery(ies) inserted</li> <li>AC adapter not plugged in</li> <li>Battery may be at end of life</li> <li>Battery may be over temperature limit</li> </ul>	<ul style="list-style-type: none"> <li>The battery light will not display when full and attached to AC adapter</li> <li>Insert 1 or 2 batteries into either slot</li> <li>Plug AC adapter into a working outlet</li> <li>Install new Battery and recycle old</li> <li>Allow the Battery(ies) to cool before use</li> </ul>
<b>Pressure Light AND Warning Light are illuminated AND Beeping is heard</b>	<ul style="list-style-type: none"> <li>Core Filter not installed properly</li> <li>Core Filter is loaded</li> </ul>	<ul style="list-style-type: none"> <li>Ensure the Core Filter is fully seated and latched into the Core</li> <li>Remove and discard old Core Filter; install new Core Filter</li> </ul>
<b>Unit powered on AND Fan does not operate AND Warning Light flashing</b>	<ul style="list-style-type: none"> <li>General system error (Warning, Pressure, Beep)</li> </ul>	<ul style="list-style-type: none"> <li>Remove all power sources; install AC adapter to verify operation; add Battery(ies)</li> </ul>

Problem	Possible Cause	Solution
<b>Remote will not pair</b>	<ul style="list-style-type: none"> <li>Error in communications</li> </ul>	<ul style="list-style-type: none"> <li>Remove batteries in Remote; Pressure Light AND Warning Light are illuminated AND Beeping is heard remove all power sources from the Core; reinstall power to the Core then batteries into the Remote; perform pairing sequence again</li> </ul>
<b>Flow is reduced but no Pressure Warning Light</b>	<ul style="list-style-type: none"> <li>Core Filter life is very close to zero</li> </ul>	<ul style="list-style-type: none"> <li>Replace the Core Filter</li> </ul>
<b>Air exiting the Core has an unpleasant smell</b>	<ul style="list-style-type: none"> <li>Carbon Filter may be depleted</li> </ul>	<ul style="list-style-type: none"> <li>Replace the Carbon Filter</li> </ul>
<b>Core will not fit into the Main Stand</b>	<ul style="list-style-type: none"> <li>Pre Filter may not be seated fully</li> </ul>	<ul style="list-style-type: none"> <li>Press the Pre Filter fully into place and install the Back Cover</li> </ul>
<b>Unit powers on then immediately powers off</b>	<ul style="list-style-type: none"> <li>Battery(ies) may be low</li> </ul>	<ul style="list-style-type: none"> <li>Charge Battery(ies) with the supplied AC adapter</li> </ul>
<b>Filter Life Button flashing AND Beeping</b>	<ul style="list-style-type: none"> <li>Filter Life trip point has been met</li> </ul>	<ul style="list-style-type: none"> <li>Press the Filter Life Button once to silence; Filter Life Button will be solid but no Beep</li> </ul>

## Celios Limited Warranty

Celios Corporation warrants that, for a period of one year from Product shipment, the Product will conform to its published specifications under normal use in accordance with the documentation provided with the Product. In the event that you believe you have a warranty claim, contact Celios at [customer.care@celios.com](mailto:customer.care@celios.com) or 1-833-CELIOS1 for return instructions. For all warranty returns, a Return Authorization number and Proof of Purchase is required. Warranty services are available only in countries where the Products are sold directly by Celios or by an authorized Celios distributor. Original shipping fees are non-refundable. Return shipping charges may apply except where prohibited by applicable law.

Celios' sole obligation under this warranty and your sole and exclusive remedy under this warranty will be for Celios, at its option, to repair or replace the Product. Any repaired or replaced product will be warranted for the remaining period of the original warranty. Replacement products may contain new or refurbished parts. This warranty does not apply to Products damaged by misuse, abuse, improper maintenance, accident, electrical disturbance or normal wear and tear. This warranty does not apply to replacement filters or replacement batteries. The Product is not designed for or warranted against damage from use in areas subject to extreme temperature, excessive moisture, or other inherently hazardous environments.

ALL IMPLIED WARRANTIES OF MERCHANTABILITY OR FITNESS FOR A PARTICULAR PURPOSE ARE LIMITED TO THE DURATION OF THIS WARRANTY. EXCEPT FOR THE LIMITED EXPRESS WARRANTIES SET FORTH ABOVE, THE PRODUCT IS PROVIDED "AS IS" AND CELIOS DISCLAIMS ALL OTHER EXPRESS OR IMPLIED WARRANTIES OR CONDITIONS. CELIOS SHALL NOT BE LIABLE FOR ANY INCIDENTAL OR CONSEQUENTIAL DAMAGES IN CONNECTION WITH THE PRODUCT, WHETHER ATTRIBUTABLE TO BREACH OF CONTRACT, TORT, STRICT LIABILITY, OR OTHERWISE. IN NO EVENT WILL CELIOS BE LIABLE FOR ANY AMOUNT IN EXCESS OF THE PURCHASE PRICE OF THE PRODUCT. COMPANY RESERVES THE RIGHT, WITHOUT PRIOR NOTICE, TO ALTER THE SPECIFICATIONS, CONSTRUCTION, OR

CONTENT OF PRODUCT AT THE COMPANY'S DISCRETION.

Some jurisdictions do not allow limitations set forth in this warranty, so the above limitations may not apply to you. This warranty gives you specific legal rights, and you may also have other rights which vary by jurisdiction.

User assumes all risks resulting from the use of this product, regardless of whether or not used as intended. Any prospective user who is unwilling, or unable, to assume these risks should return his/her Product, in like-new condition, for a refund of the purchase price. Acceptance of Product shall be deemed defacto acknowledgment and acceptance of all risks.



## CUSTOMER SUPPORT

If you have any questions about your Celios G200 air purifier visit [www.Celios.com/Support](http://www.Celios.com/Support) or contact us by phone or email:

[www.Celios.com](http://www.Celios.com)

1-833-CELIOS1

[customer.care@celios.com](mailto:customer.care@celios.com)

