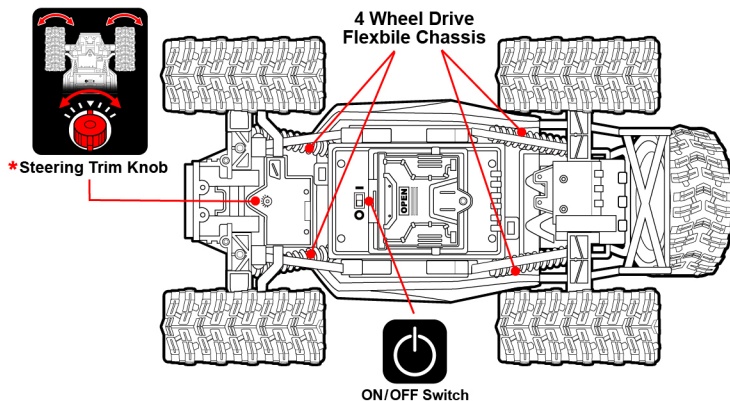


Moab Unlimited Owner's Manual

PLEASE READ ALL INSTRUCTIONS CAREFULLY BEFORE OPERATING AND RETAIN THESE INSTRUCTIONS AND THE PACKAGE FOR FUTURE REFERENCE

① Vehicle Features and Functions



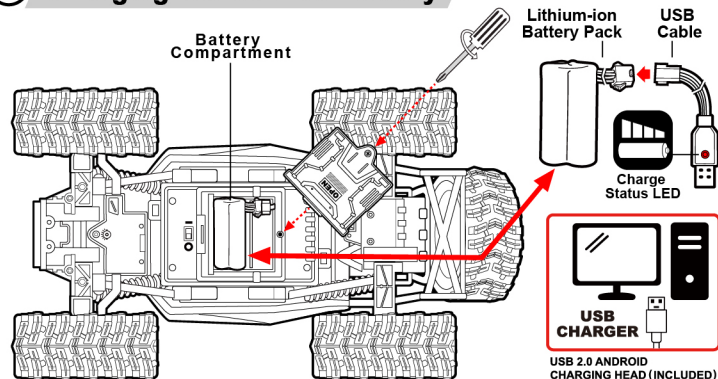
The "I/O"(ON/OFF) switch controls the vehicle's main power supply. To save battery life, always remember to turn the switch in the "0"(OFF) position when not in use.

The 4 Wheel Drive Flexible Chassis enables the vehicle to climb steep angles.

Each wheel has independent suspension when going forward and reverse. The vehicle also features extended shock absorbers and soft tires to help grip the road.

*The "Steering Trim Knob" is located at the bottom of the chassis between the front wheels, under the body. If the vehicle pulls to the left or right while driving forward, the "Steering Trim Knob" may need to be adjusted.

② Charging the Vehicle Battery



1. Turn the "I/O"(ON/OFF) Switch of Vehicle to "0"(OFF) position prior to charging.
2. Unscrew & open "Battery Compartment Cover", remove the "Lithium-ion Battery Pack" and "USB Cable".
3. Connect the "Lithium-ion Battery Pack" and "USB Cable" to charge. "USB Cable" can be plugged into 5V DC class II equipment such as 5V DC computer or 5V DC USB outlet adapter (not included).
4. While charging, the "Change status LED" at the USB will be on. Once fully charged the LED will turn off. Charging is completed in approximately 1.5 hours depending on the type of charging device you use.
5. When Charging is completed, disconnect "Lithium-ion Battery Pack" and "USB Cable". Connect "Lithium-ion Battery Pack" with Vehicle. Return "USB Cable" into the Battery Compartment. Screw & secure "Battery Compartment Cover" before operating the vehicle.

③ Controller Battery Installation

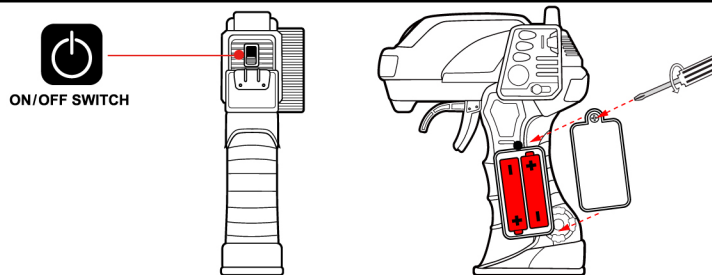
Note:

When replacing Controller batteries:

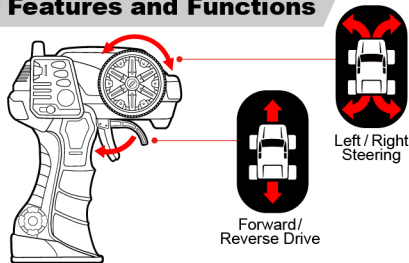
Use 2 X AA 1.5V alkaline batteries only.

Do not mix old and new batteries.

Do not mix alkaline, standard or rechargeable batteries.



④



The controller is equipped with 2.4GHz technology. Up to 6 cars can race at the same time.

Pairing

The controller must be paired with the vehicle before first use and after each battery change.

To pair the controller and vehicle, follow these steps:

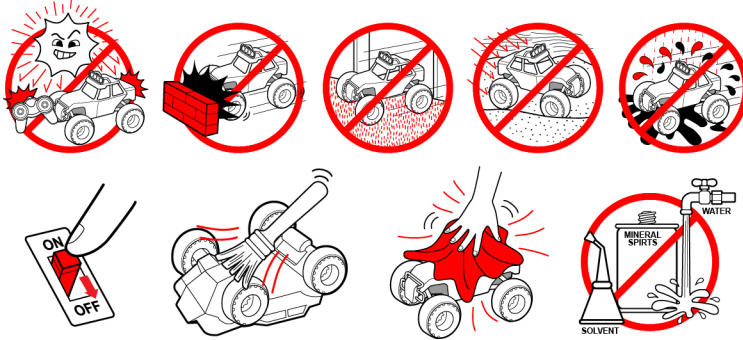
Install the batteries correctly into the controller, turn the controller "I/O"(ON/OFF) switch to "I"(ON) position.

Place the vehicle upside down and turn the vehicle "I/O"(ON/OFF) switch to "I"(ON) position.

The vehicle is only in pairing mode for 30 seconds.

Immediately press and hold the "Forward/Reverse Drive" lever on the controller. Keep holding until the wheels move (up to 30 seconds).

⑤



Turn Vehicle OFF
when not in use.

Brush and clean areas where dirt has accumulated.

Wipe body with a
Soft rag or flexible cloth.

Do not use chemicals
or water to clean.

⑥

● **Problem - Vehicle does not move or moves slowly.**

- Make sure there are fresh batteries in the controller and that they are installed in the polarities. You may need to re-pair the controller and vehicle. See Pairing Instructions.
- Are the (+) and (-) markings on the battery in the same position as the (+) and (-) markings in the controller battery compartment?
- Are the metal contacts inside the controller touching, rusty or dirty?
- Is the vehicle fully charged?
- Make sure the vehicle "I/O"(ON/OFF) switch is in the "I"(ON) position.

- **Problem - Vehicle moves on its own or range from controller decreases.**

- Make sure there is no external radio interference in your area. The best way to test this is to keep the vehicle as far away from radio towers, power lines or tall buildings as possible to ensure no further radio interference occurs.

Always remove Batteries from controller when not in use.

Do not dispose batteries in fire. Leakage, explosion and personal injury may occur.

Do not attempt jumps or tricks with this vehicle.

Do not attempt to remove internal components.

Do not use included USB cord for anything other than its intended purpose.

Always keep USB cord stored when not in use.

Adult supervision recommended.

FCC CAUTION:

Changes or modifications not expressly approved by the party responsible for compliance could void the user's authority to operate the equipment.

This device complies with Part 15 of the FCC Rules. Operation is subject to the following two conditions:

- (1) this device may not cause harmful interference, and
- (2) this device must accept any interference received, including interference that may cause undesired operation.

NOTE: This equipment has been tested and found to comply with the limits for a Class B digital device, pursuant to Part 15 of the FCC Rules. These limits are designed to provide reasonable protection against harmful interference in a residential installation. This equipment generates, uses and can radiate radio frequency energy and, if not installed and used in accordance with the instructions, may cause harmful interference to radio communications. However, there is no guarantor that interference will not occur in a particular installation. If this equipment does cause harmful interference to radio or television reception, which can be determined by turning the equipment off and on, the user is encouraged to try to correct the interference by one or more of the following measures:

- Reorient or relocate the receiving antenna,
- Increase the separation between the equipment and receiver.
- Connect the equipment into an outlet on a circuit different from that to which the receiver is connected.
- Consult the dealer or an experienced radio/TV technician for help.

This equipment complies with FCC radiation exposure limits set forth for an uncontrolled environment.