



DELTA
 EOE18010851
 CS WPP STD 30KW
 [WPP 30KW]
 Input: Supplied by WPB
 Output: Pairing with WSU
 Protection Class: IP69



CE FCC ID : 2AVWKWPU30KW

MET UL 62368-1; UL1564
 CSA C22.2 No 62368-1
 CSA C22.2 No. 107.2

Made in: CC (Country)
 Rev:XX Date:YYWW S/N:ZZZZZZ

Delta Energy Systems (Germany) GmbH
 Tscheulinstr. 21 79331 Teningen (Germany)

NOTES:

- 1)
 LLL = Location code
 MMM = number of Project (last three digits of project number)
 CC = Country code
 XX = use SAP revision
 YY = Year
 WW = Week
 ZZZZZZ = Serial number

- 2)
 2D-Barcode type: DataMatrix ECC200
 2D-Barcode text:
 EOE18010851
 LLL
 XX
 YYWW
 ZZZZZZ

2)

3) PRINTING MUST MEET TEST STANDARD IEC 62368-1 Ed.3- F3.10 (TEST FOR PERMANENCE MARKING)

4) Released thermal transfer ribbon: Ricoh B110CR and ARMOR AXR 7+


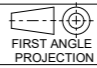
- 5) Placement see page 3
- 6) Photomaster see page 4

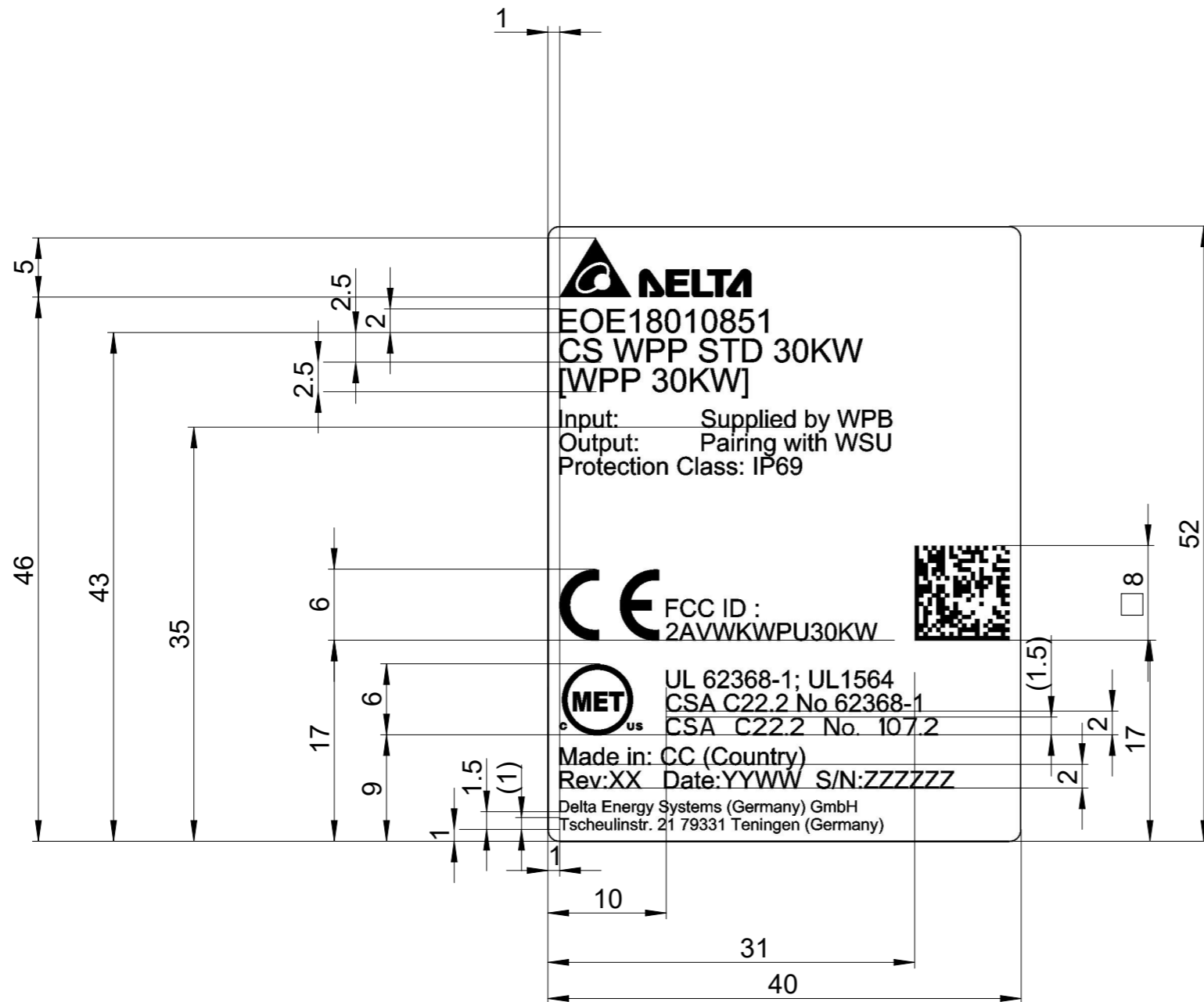
7) Font = Arial

8) Raw Label = 3263789600 (PLE T0.07)

PRELIMINARY

Must meet Delta General Spec. 10000-0162

	© Delta Energy Systems (Germany) GmbH		DRAWN:	delangt	DATE:	28.Jul.2022				
	THESE DRAWINGS AND SPECIFICATIONS ARE THE PROPERTY OF DELTA ENERGY SYSTEMS (GERMANY) GMBH AND SHALL NOT BE REPRODUCED OR USED AS THE BASIS FOR THE MANUFACTURE OR SELL OF APPARATUSES OR DEVICES WITHOUT PERMISSION.		CHECKED:	delangt	DATE:	28.Jul.2022				
		Doc-Typ:	000	APPROVED:	dekoenm	DATE:	28.Jul.2022			
				In Work		Ver.:	02.6			
					Description		LABEL SPEC PLE 40*52 T0.07 EOE18010851			
				GENERAL TOL.:	DINISO 2768-mH		Part No.:	3268957002		
				SCALE:	2:1	UNIT:	MM	Used on:	EOE18010851	
				A3 SIZE		Sheet		2 of 4	ECO_No.:	101MTE00045
						REV.:		02		



PRELIMINARY

Must meet Delta General Spec. 10000-0162

	© Delta Energy Systems (Germany) GmbH		DRAWN:	delangt	DATE:	28.Jul.2022
	THESE DRAWINGS AND SPECIFICATIONS ARE THE PROPERTY OF DELTA ENERGY SYSTEMS (GERMANY) GMBH AND SHALL NOT BE REPRODUCED OR USED AS THE BASIS FOR THE MANUFACTURE OR SELL OF APPARATUSES OR DEVICES WITHOUT PERMISSION.		CHECKED:	delangt	DATE:	28.Jul.2022
FIRST ANGLE PROJECTION		In Work	APPROVED:	dekoenm	DATE:	28.Jul.2022
Description		Label Spec		Ver.:	02.6	
GENERAL TOL.: DINISO 2768-mH		Doc-Typ:	000		REV.: 02	
SCALE:	2:1	UNIT:	MM	Used on:	EOE18010851	
A3 SIZE		Part No.: 3268957002		Sheet 3 of 4		
ECO_No.: 101MTE00045		ECO_No.: 101MTE00045				

DELTA
 EOE18010851
 CS WPP STD 30KW
 [WPP 30KW]
 Input: Supplied by WPB
 Output: Pairing with WSU
 Protection Class: IP69


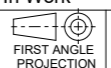
CE FCC ID : 2AVWKWPU30KW 

MET UL 62368-1; UL1564
 CSA C22.2 No 62368-1
 CSA C22.2 No. 107.2

Made in: CC (Country)
 Rev:XX Date:YYWW S/N:ZZZZZ
 Delta Energy Systems (Germany) GmbH
 Tscheulinstr. 21 79331 Teningen (Germany)

PRELIMINARY

Must meet Delta General Spec. 10000-0162

	© Delta Energy Systems (Germany) GmbH		DRAWN: delangt	DATE: 28.Jul.2022
			CHECKED: delangt	DATE: 28.Jul.2022
			APPROVED: dekoenm	DATE: 28.Jul.2022
		In Work		Ver.: 02.6
THESE DRAWINGS AND SPECIFICATIONS ARE THE PROPERTY OF DELTA ENERGY SYSTEMS (GERMANY) GMBH AND SHALL NOT BE REPRODUCED OR USED AS THE BASIS FOR THE MANUFACTURE OR SELL OF APPARATUSSES OR DEVICES WITHOUT PERMISSION.			Description LABEL SPEC PLE 40*52 T0.07 EOE18010851	
GENERAL TOL.: DINISO 2768-mH		Doc-Typ: 000	A3 SIZE	Part No.: 3268957002
SCALE: 2:1	UNIT: MM	Used on: EOE18010851	Sheet 4 of 4	ECO_No.: 101MTE00045
				REV.: 02