

深圳市亿圣邦科技有限公司  
Shenzhen Yi shengbang Technology Co., Ltd  
样品承认书

SPECIFICATION FOR APPROVAL

公司名称 (客户填写): 深圳市艾普达科技有限公司  
物料代码 (客户填写): \_\_\_\_\_  
规格型号 (客户填写): MPC10P3YN  
承认日期 (客户填写): \_\_\_\_\_  
供应商名称 (SLK 填写): 深圳市亿圣邦科技有限公司  
供应商名称 (SLK 填写): WIFI MAIN:SLK-APD-3228A-R-70IV-B  
WIFI AUX:SLK-APD-3228A-R-210IV-G

承 认 签 章

供 应 商 承 认			深圳市艾普达科技有限公司		
工 程 师	审 核	批 准	工 程 师	审 核	批 准
曾立文	黄 震	林美财			
盖章签署			盖章签署		
日 期	22-9-3		日 期		
			批示: <input type="checkbox"/> 接受 <input type="checkbox"/> 有条件接受		
备注 (客户填写):					

Address: 101, Building C, Qianwan Hard Technology Industrial Park,  
Bao'an District, Shenzhen, China

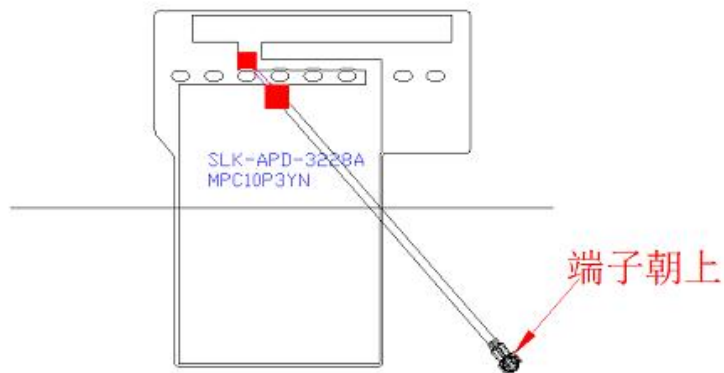
Phone: +86-18025305599

# WIFI Antenna MAIN (3228A)

## 1. Explanation of Product number :

**S L K - A P D - 3 2 2 8 A - R - 7 0 I V - B**

**1      2      3      4      5**



Product Code:

(1) Customer:

APD: 艾普达

(2) Project:

3228A: SLK-APD-3228A(WIFI antenna 2.4~2.5GHz 5~5.85GHz)

(3) Welding Position

R:Right

(4) Cable Length:

70IV:70\*0.81MM

(5)Cable Color

B: Black

## 2. Features

\*Stable and reliable in performances

\*Compact size

\*RoHS compliance

## 3. Applications

\* IEEE802.11 (a/b/g/n)

\* Hand-held devices when WIFI (802.11a/b/g/n) functions are needed

## 4. Description

Holy bond's External antenna series are specially designed for WIFI (802.11 a/b/g/n) applications. Based on Holy bond's proprietary design and processes, this External antenna has excellent stability and sensitivity to consistently provide high signal reception efficiency.

## 5. Electrical Specifications

### 5-1

Characteristics	Specifications	Unit
Outline Dimensions	28.6*32.13*0.12	mm
Bandwidth(under-10dB return loss)	130min	MHz
VSWR	3max	
Impedance	50	$\Omega$
Polarization	Linear Polarization	

### 5-2

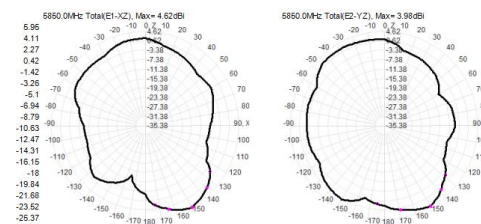
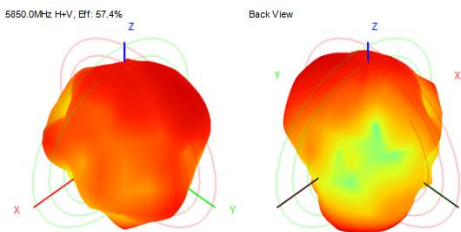
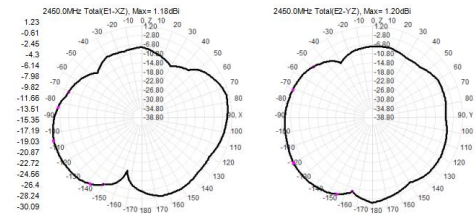
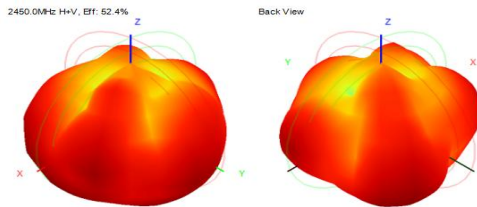
VSWR

S11

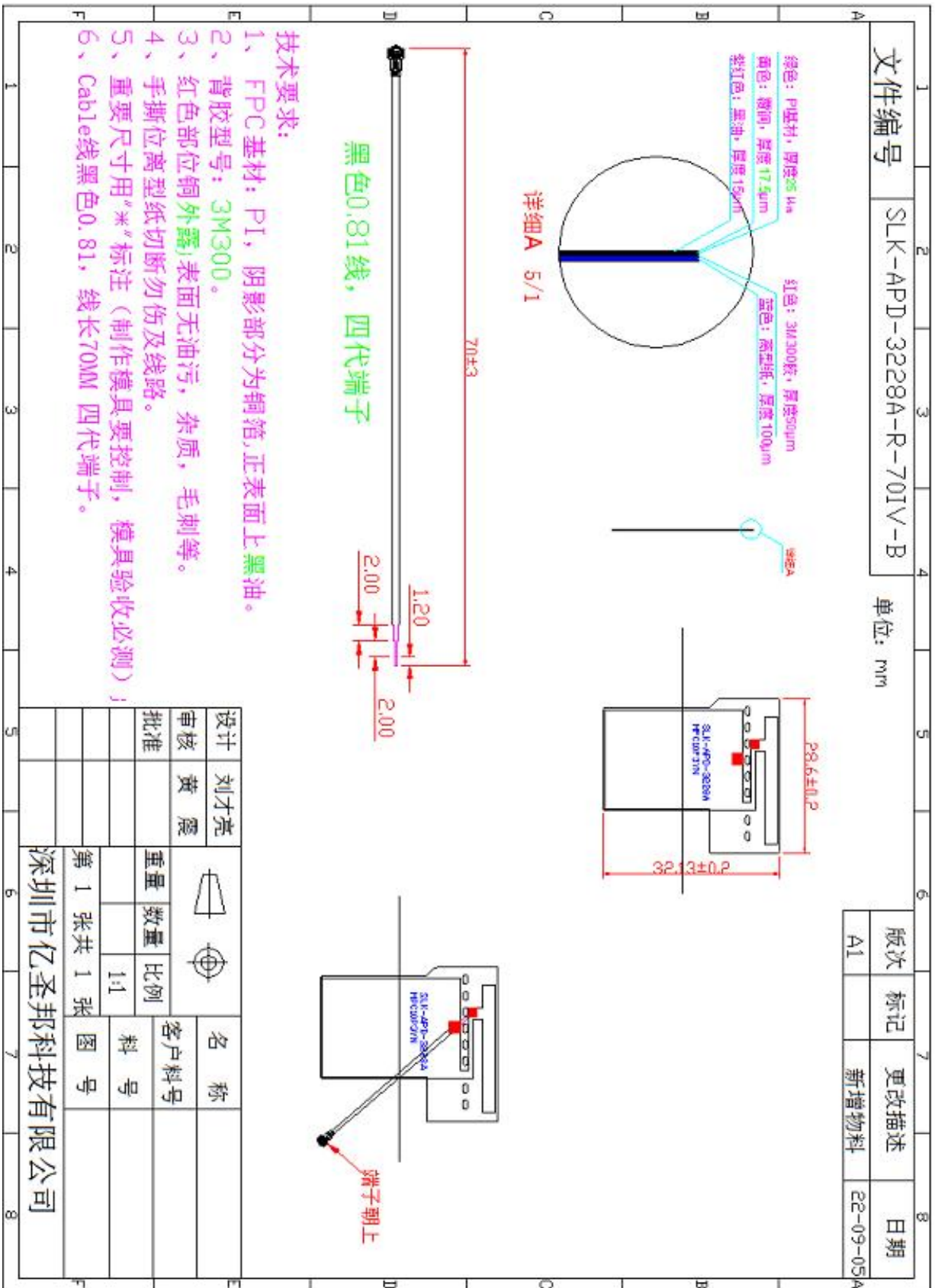


### 5-3.WIFI Antenna Gain/Efficiency/Radiation Pattern of 3D

Passive Test for 2.4G&5G			
Frequency (MHz)	Effi (%)	Effi (dB)	Gain (dBi)
2400.00	33.85	-7.32	0.57
2410.00	34.53	-8.62	0.34
2420.00	32.45	-8.32	0.63
2430.00	36.01	-8.12	0.84
2440.00	35.89	-8.63	0.88
2450.00	34.18	-8.61	0.69
2460.00	33.99	-7.21	0.81
2470.00	33.14	-8.01	0.61
2480.00	31.81	-9.03	0.69
2490.00	35.88	-9.14	0.71
2500.00	35.69	-9.04	0.73
5100.00	45.16	-8.21	2.69
5150.00	45.54	-9.31	2.64
5200.00	52.79	-8.62	2.53
5250.00	52.67	-6.31	2.48
5300.00	45.80	-5.63	3.52
5350.00	53.07	-7.62	3.14
5400.00	50.44	-8.63	2.86
5450.00	51.36	-7.63	3.85
5500.00	49.56	-8.62	2.36
5550.00	47.11	-8.62	3.52
5600.00	51.17	-7.82	4.03
5650.00	52.42	-8.63	4.65
5700.00	46.14	-9.12	5.03
5750.00	46.10	-8.52	5.95
5800.00	47.50	-10.61	5.87
5850.00	52.75	-8.36	5.65



## 6. Antenna Dimensions (unit: mm)



### 技术要求:

- 1、FPC基材: PI, 阴影部分为铜箔,正表面上**黑油**。
- 2、背胶型号: **3M300**。
- 3、红色部位**铜外露**表面无油污, 杂质, 毛刺等。
- 4、手撕位离型纸切断勿伤及线路。
- 5、重要尺寸用“\*”标注(制作模具要控制, 模具验收必测) ;
- 6、Cable线黑色0.81, 线长70MM 四代端子。

设计	刘才亮		重量 数量 比例 1:1	名称	
审核	黄震			客户料号	
批准		第 1 张共 1 张	图号		

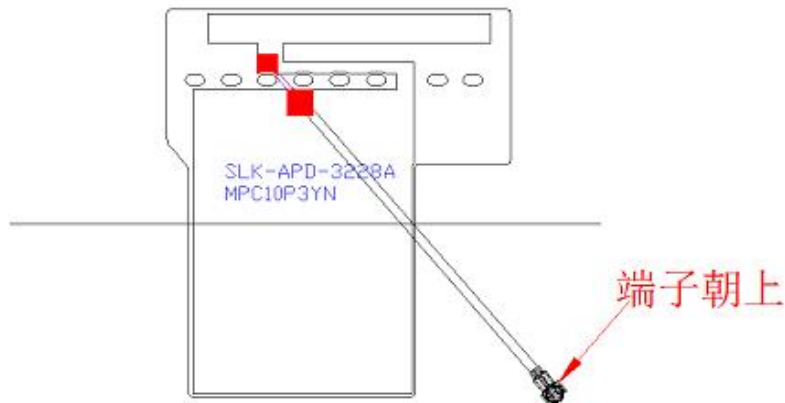
深圳市亿圣邦科技有限公司

# WIFI Antenna AUX(3228A)

## 1. Explanation of Product number :

**S L K - A P D - 3 2 2 8 A - R - 2 1 0 I V - G**

**1      2      3      4      5**



Product Code:

(1) Customer:

APD: 艾普达

(2) Project:

3228A: SLK-APD-3228A(WIFI antenna 2.4~2.5GHz 5~5.85GHz)

(3) Welding Position

R:Right

(4) Cable Length:

210IV:210\*0.81MM

(5)Cable Color

G: Grey

## 2. Features

- \*Stable and reliable in performances
- \*Compact size
- \*RoHS compliance

## 3. Applications

- \* IEEE802.11 (a/b/g/n)
- \* Hand-held devices when WIFI (802.11a/b/g/n) functions are needed

## 4. Description

Holy bond's External antenna series are specially designed for WIFI (802.11 a/b/g/n) applications. Based on Holy bond's proprietary design and processes, this External antenna has excellent stability and sensitivity to consistently provide high signal reception efficiency.

## 5. Electrical Specifications

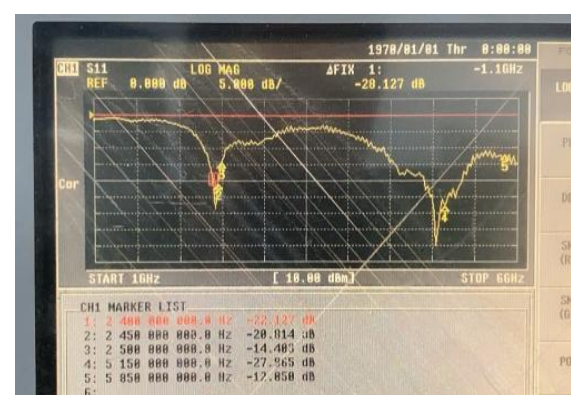
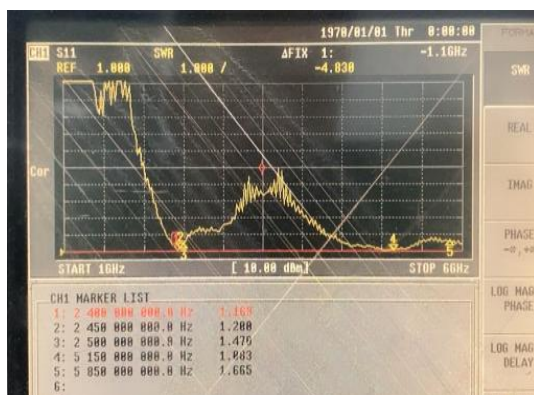
### 5-1

Characteristics	Specifications	Unit
Outline Dimensions	28.6*32.13*0.12	mm
Bandwidth(under-10dB return loss)	130min	MHz
VSWR	3max	
Impedance	50	$\Omega$
Polarization	Linear Polarization	

### 5-2

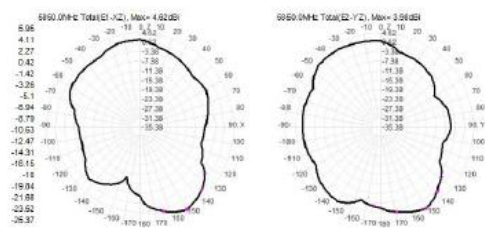
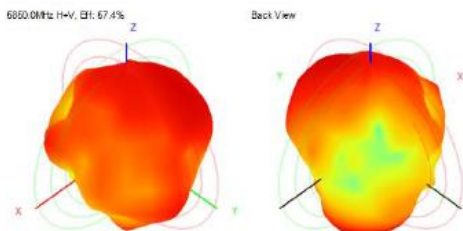
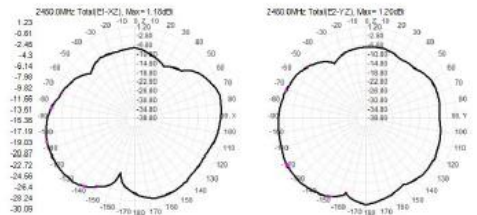
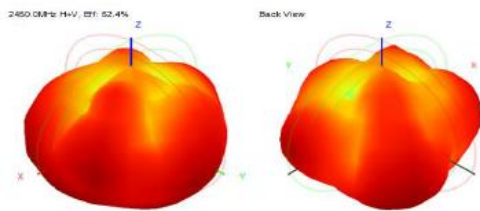
VSWR

S11



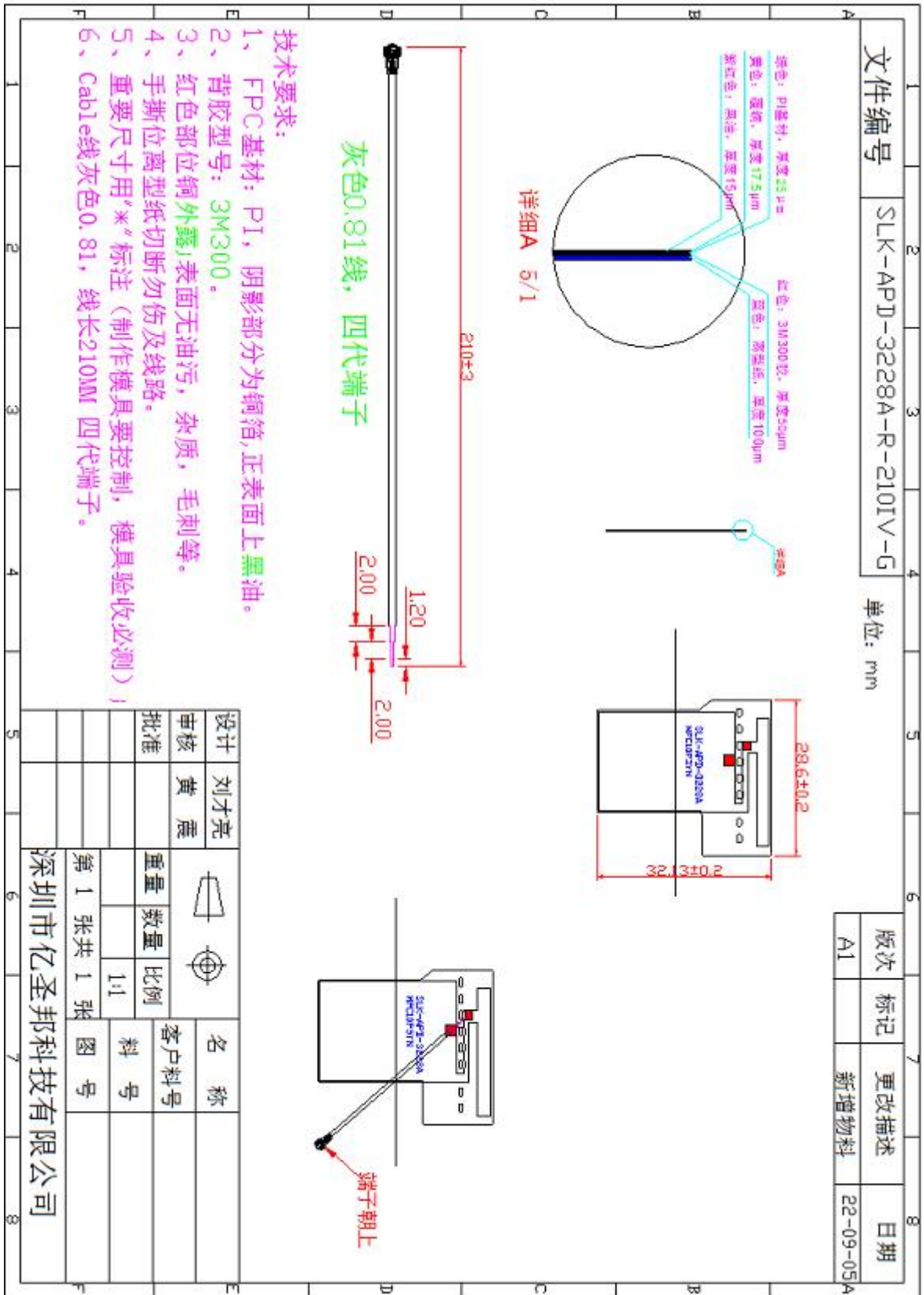
### 5-3.WIFI Antenna Gain/Efficiency/Radiation Pattern of 3D

Passive Test for 2.4G&5G			
Frequency (MHz)	Effi (%)	Effi (dB)	Gain (dBi)
2400.00	33.85	-7.32	0.57
2410.00	34.53	-8.62	0.34
2420.00	32.45	-8.32	0.63
2430.00	36.01	-8.12	0.84
2440.00	35.89	-8.63	0.88
2450.00	34.18	-8.61	0.69
2460.00	33.99	-7.21	0.81
2470.00	33.14	-8.01	0.61
2480.00	31.81	-9.03	0.69
2490.00	35.88	-9.14	0.71
2500.00	35.69	-9.04	0.73
5100.00	45.16	-8.21	2.69
5150.00	45.54	-9.31	2.64
5200.00	52.79	-8.62	2.53
5250.00	52.67	-6.31	2.48
5300.00	45.80	-5.63	3.52
5350.00	53.07	-7.62	3.14
5400.00	50.44	-8.63	2.86
5450.00	51.36	-7.63	3.85
5500.00	49.56	-8.62	2.36
5550.00	47.11	-8.62	3.52
5600.00	51.17	-7.82	4.03
5650.00	52.42	-8.63	4.65
5700.00	46.14	-9.12	5.03
5750.00	46.10	-8.52	5.95
5800.00	47.50	-10.61	5.87
5850.00	52.75	-8.36	5.65





## 6. Antenna Dimensions (unit: mm)



# 7. Antenna Picture



**WIFI MAIN**

**WIFI AUX**