



# SHIPPING LABEL THERMAL PRINTER

## Quick Start Guide

Scan this QR code to  
watch the how-to video



**CTP800BD**

# CorePrint App

---

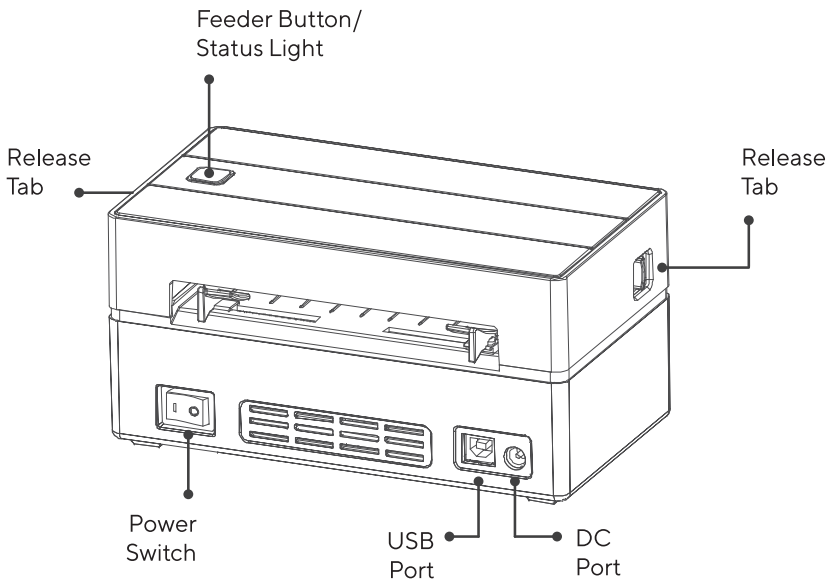


Scan QR code to download the **CorePrint** App. No sign up required.



## Printer Overview

---



# In The Box

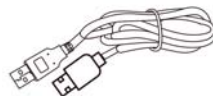
---



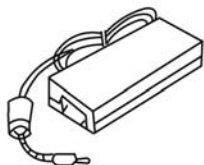
1 x Shipping  
Label Printer



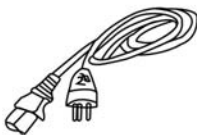
1 x Label Stand



1 x USB Cable



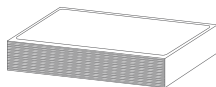
1 x Power Brick



1 x Power Cable



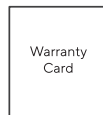
1 x USB-C®  
Adapter



50 x Thermal Labels



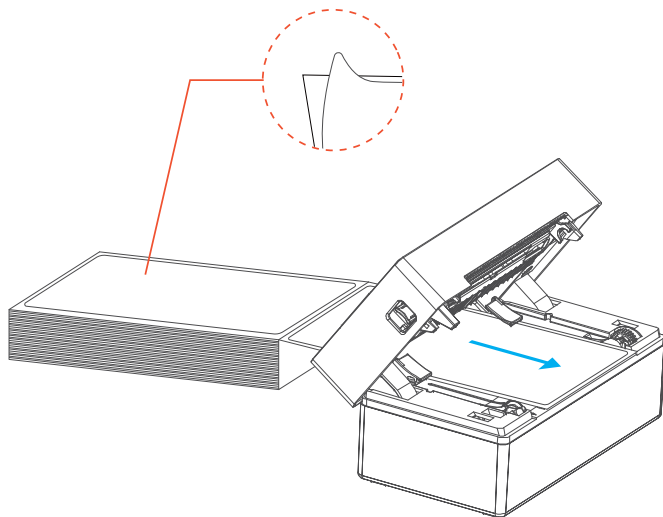
1 x Quick Start Guide



1 x Warranty Card

## Label Setup

---



1. Gently pull the release tabs on both sides of the thermal printer to open the printer latch.
2. Insert the thermal labels into the back of the printer, ensuring the peelable side is facing upward.
3. Press and hold the feeder button until you hear a beep. The printer will automatically feed the label.

# Bluetooth® Setup

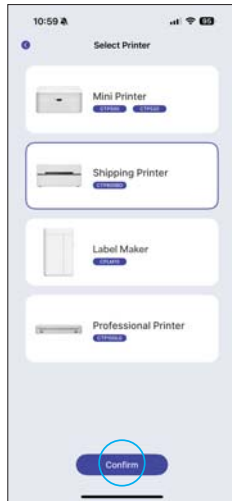
Before initial use, make sure to disconnect from other nearby paired devices.



1. Plug in the power adapter, and press the power switch at the back of the printer



2. Download the free CorePrint app by searching for it on the App Store® or Google Play™. No sign-up necessary



3. From the home page tap “Auto Connect”

4. Tap “Shipping Printer”

5. On the list of Bluetooth® devices page, look for “Label Printer” and tap to connect

## Computer Setup

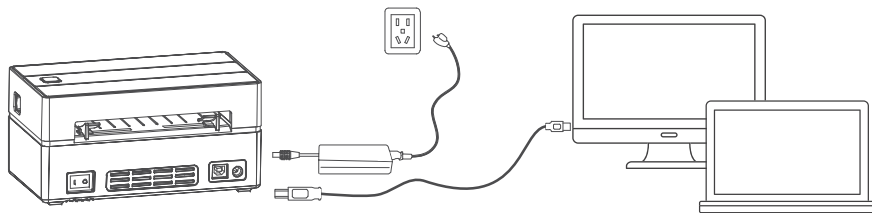
---

1. Scan the QR code to download the latest Windows™ or MacOS® printer drivers



2. Install the downloaded driver and follow the on-screen instructions

3. Connect your printer using the included USB cable (use the USB-C® adapter if needed)



4. Start printing by selecting “**CTP800BD**” from the printer list when prompted

# Important Safety Warning

---

- Avoid using or storing in the following locations. Damage to the printer may be caused.
  - Do not leave in an exposed area with direct sunlight or near heat-generating equipment.
  - Do not leave in an area where temperature or humidity is excessively high or low, or changes radically.
  - Do not leave in an area exposed to water or liquid.
- Avoid dropping or harsh impact to the printer, as damage may be caused.
- Avoid entry of foreign objects or materials, as damage may be caused.
- When cleaning do not use volatile liquid (thinner, benzine, etc.) or wet cloth. Deterioration or discoloration may occur. Use a dry, soft cloth.
- Do not move the printer or place harsh impact on printer while in printing or standby operation. Printer power may disconnect and print data may be lost.
- Please mind the paper cutting teeth. This area is sharp and can cause harm if not careful.
- This device contains small parts and is not recommended for kids under 3 years old.
- Adult supervision is recommended for kids under 13 years old. This equipment is not suitable for use in locations where children are likely to be present.
- Disassembly of printer will cause damage and void warranty.
- If severe bulging occurs to battery, please discontinue use.
- Do not touch the printer head. Please use a compressed air duster (sold separately) to gently remove dust particles and debris.

## FCC Caution

---

This device complies with Part 15 of the FCC Rules. Operation is subject to the following two conditions: (1) This device may not cause harmful interference, and (2) this device must accept any interference received, including interference that may cause undesired operation. Any changes or modifications not expressly approved by the party responsible for compliance could void the user's authority to operate the equipment.

Note: This equipment has been tested and found to comply with the limits for a Class B digital device, pursuant to Part 15 of the FCC Rules. These limits are designed to provide reasonable protection against harmful interference in a residential installation. This equipment generates, uses and can radiate radio frequency energy and, if not installed and used in accordance with the instructions, may cause harmful interference to radio communications. However, there is no guarantee that interference will not occur in a particular installation. If this equipment does cause harmful interference to radio or television reception, which can be determined by turning the equipment off and on, the user is encouraged to try to correct the interference by one or more of the following measures:

- Reorient or relocate the receiving antenna.
- Increase the separation between the equipment and receiver.
- Connect the equipment into an outlet on a circuit different from that to which the receiver is connected.
- Consult the dealer or an experienced radio/TV technician for help.

The device has been evaluated to meet general RF exposure requirement. The device can be used in portable exposure condition without restriction.



## Need Help?

---

Email us at [support@dpaudiovideo.zendesk.com](mailto:support@dpaudiovideo.zendesk.com) or call us at **1-833-909-CORE (1-833-909-2673)**. We are available Monday - Friday, 9am-5pm PST, except major holidays.

For information on recycling, please visit <https://www.coreinnovationsinc.com/support>



FCC ID: 2AVRVCTP800BD01

© 2025 Core Innovations. All rights reserved. Core Innovations is a trademark of DP Audio Video. © 2025 Bluetooth SIG, Inc. All rights reserved. The Bluetooth® trademarks including the BLUETOOTH word mark, the figure mark (the runic "B" and oval design), and the combination mark (Bluetooth word mark and design) are owned by the Bluetooth SIG. These and all third party trademarks are the property of their respective owners. Used with permission. USB is used to solely describe the compatibility of our technology and in no way is intended to infringe on any intellectual property rights of any respective protected marks. © 2025 Google Inc. All rights reserved. Google, Android and Google Play are trademarks of Google LLC. © 2025 Apple Inc. All rights reserved. Apple and App Store are trademarks of Apple LLC.

