



Download
mobile app



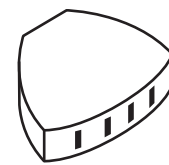
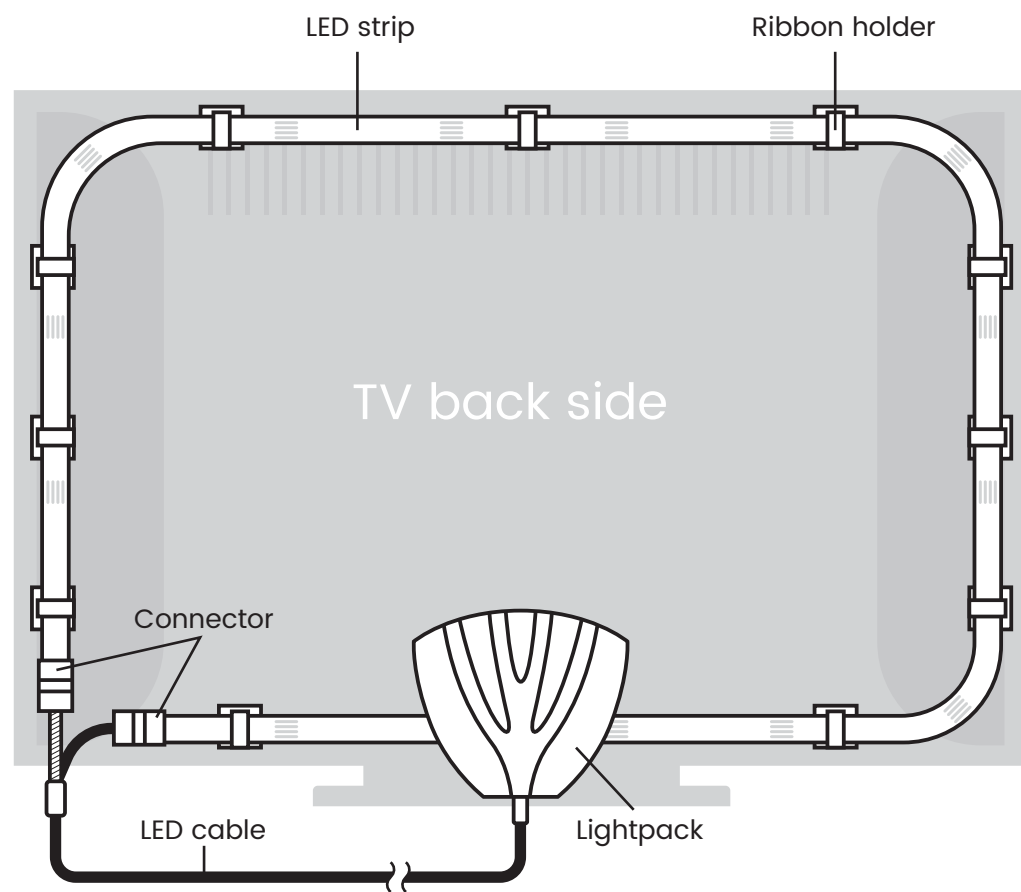
iOS™ 9.0 and later
Andriod™ 4.1 and later

www.lightpack.tv

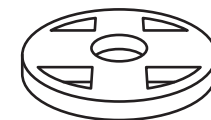


Lightpack

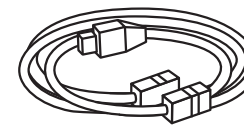
Quick Start Guide



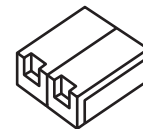
x1
Lightpack



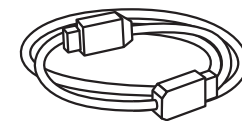
x1
LED strip



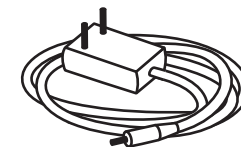
x1
LED cable



x5
Straight connector



x1
HDMI



x1
Power supply



x1
Remote control



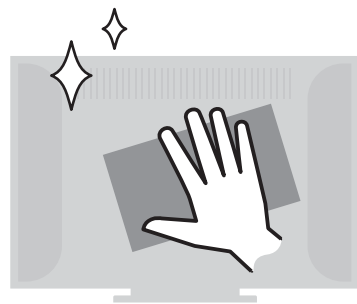
x20
Ribbon holder



Watch video instruction on lightpack.tv/start

1. Stick the Ribbon to the TV

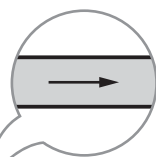
1. Wipe the dust off the back side of TV.



2.



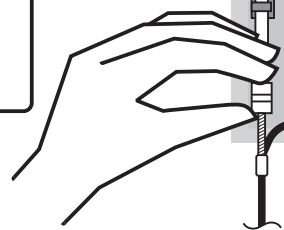
The arrows on the Ribbon must be directed clockwise



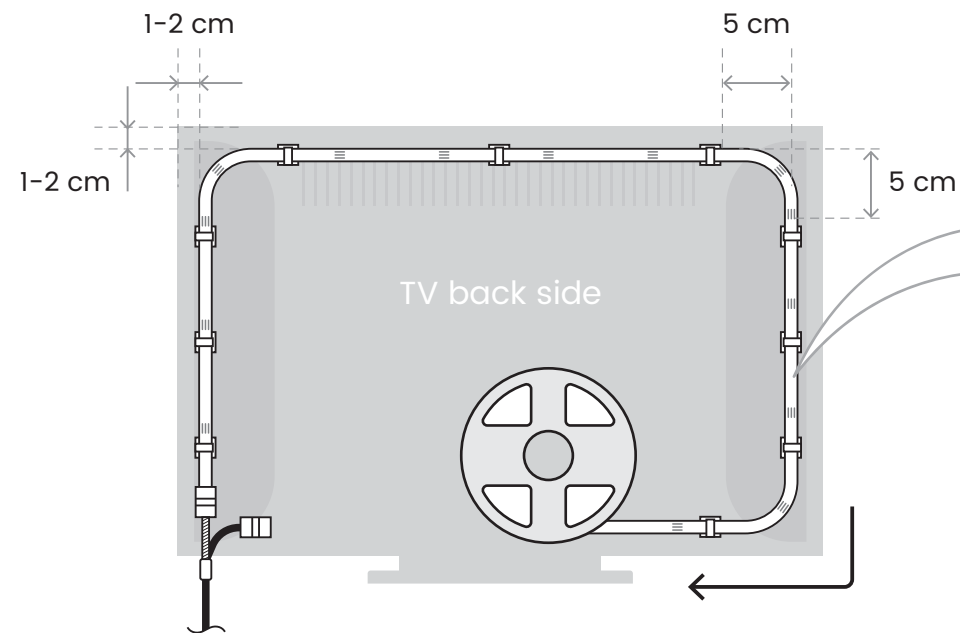
Stick the holder to the TV

TV back side

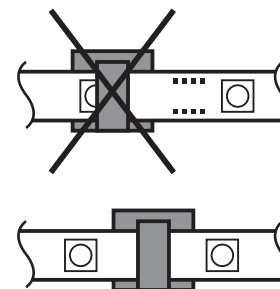
Important:
Start from the lower left corner



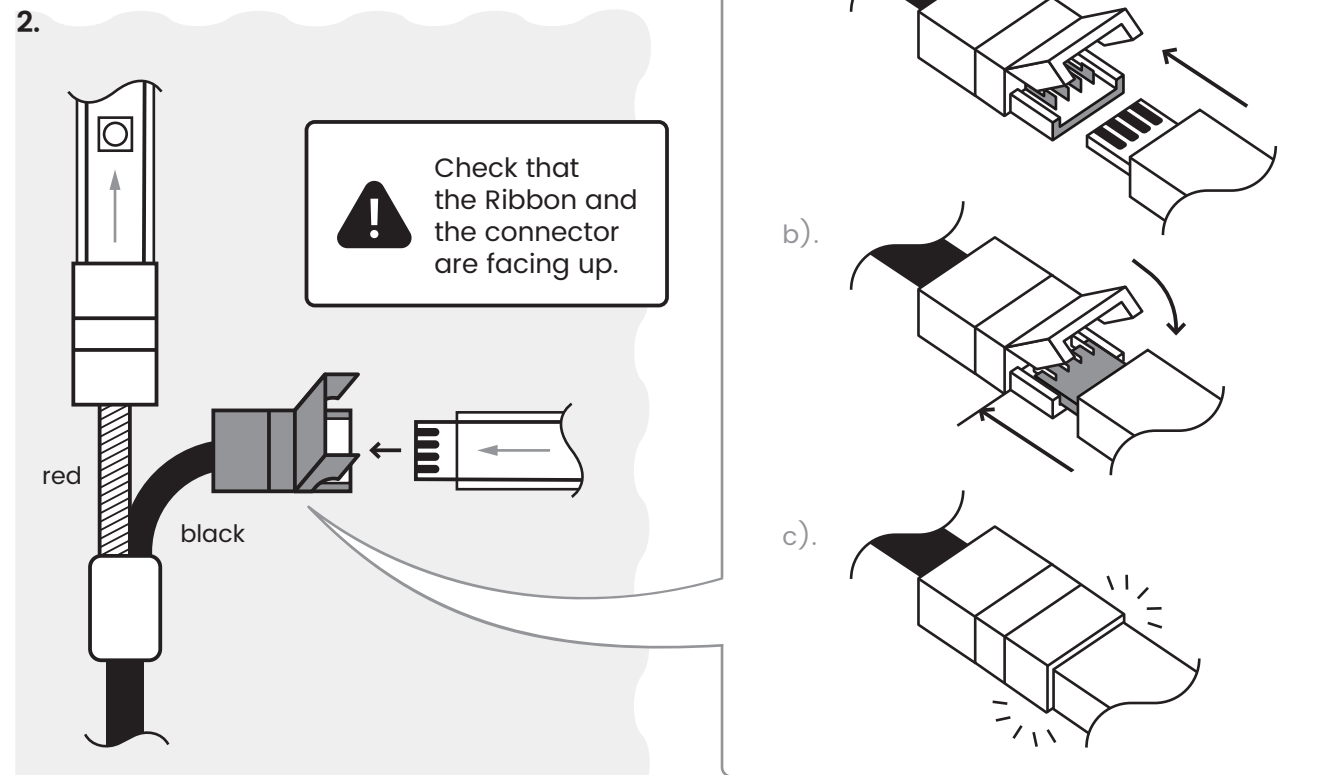
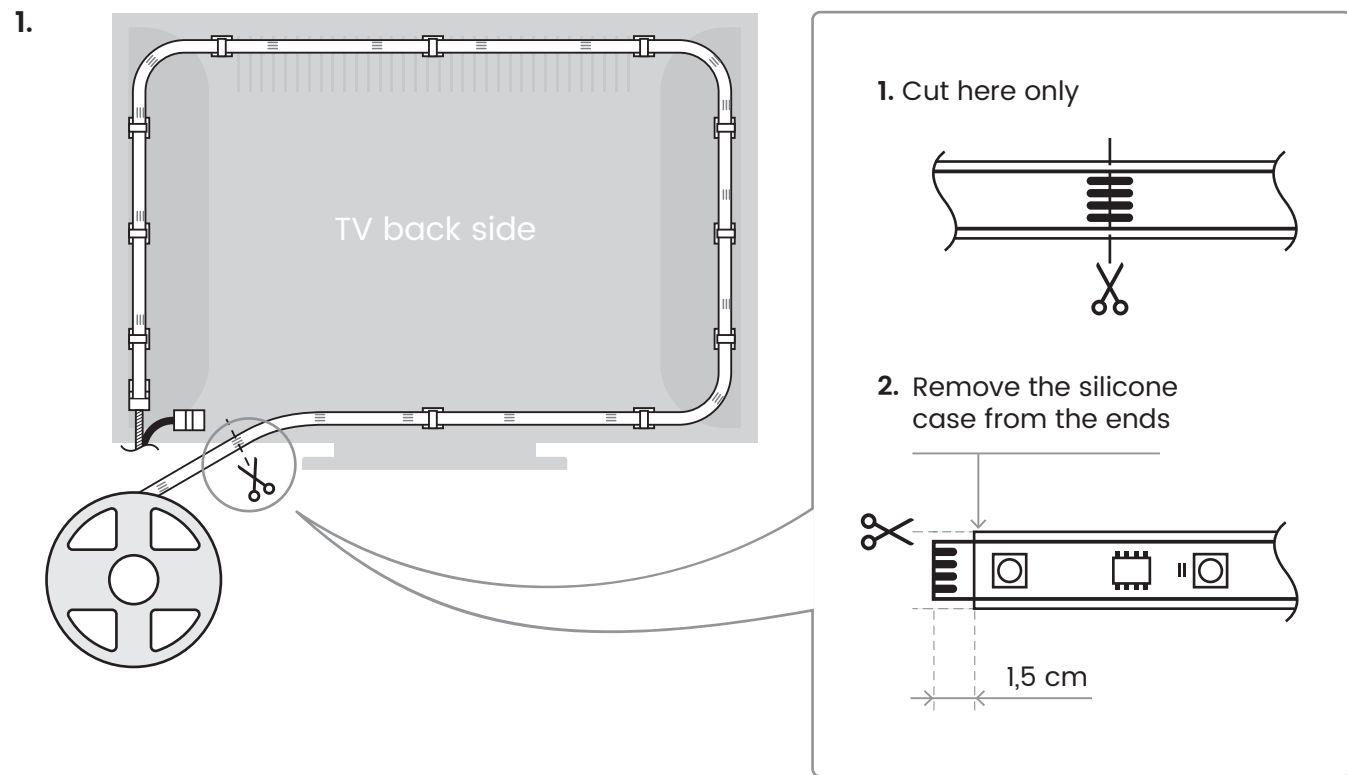
3.



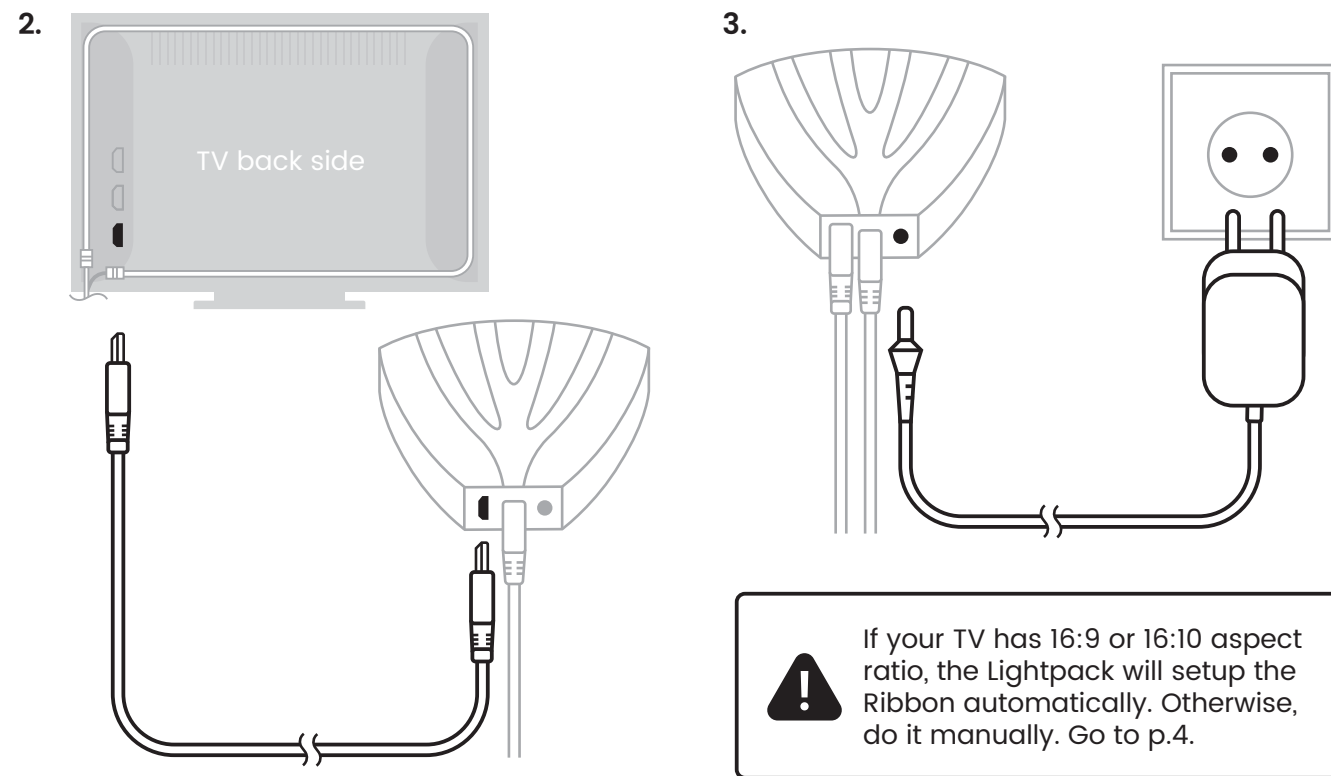
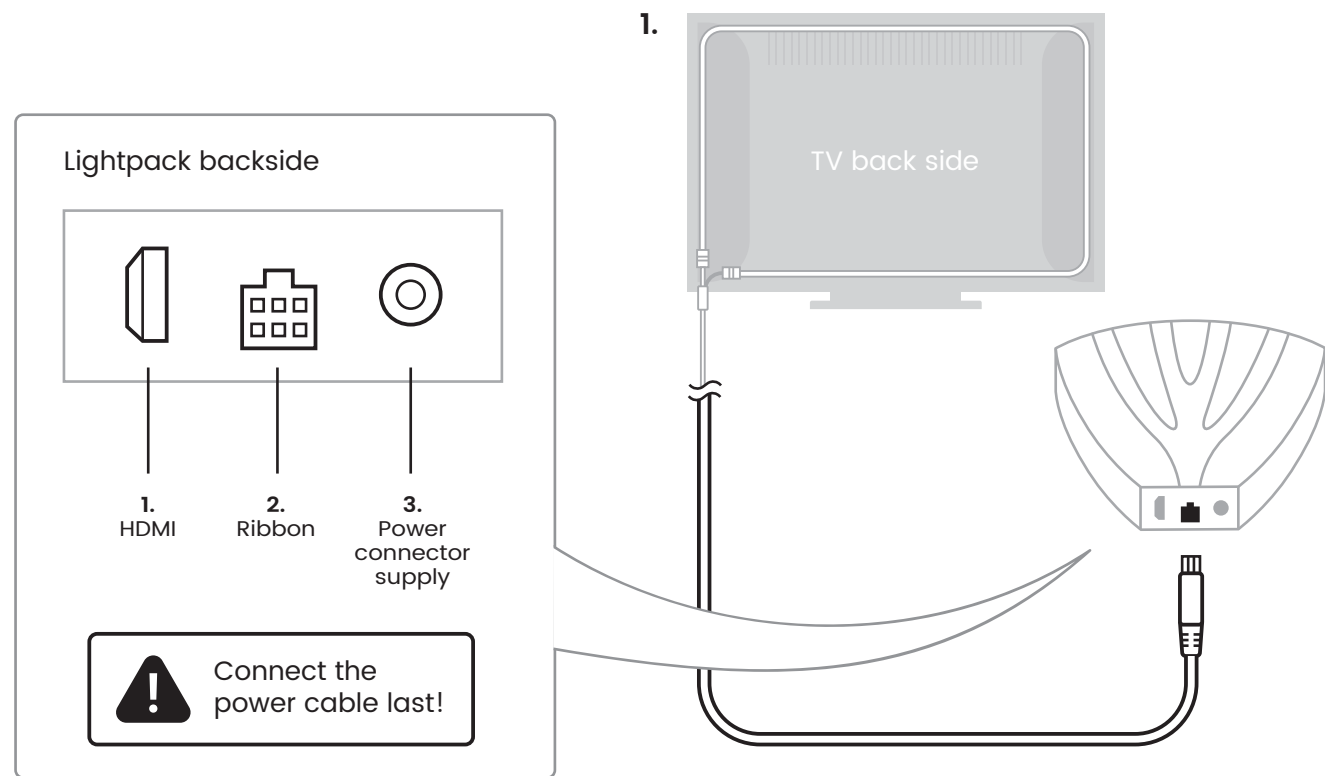
The clip should not cover the LED



2. Cut the Ribbon and assemble

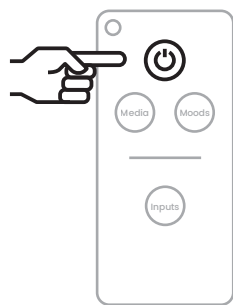


3. Connect the Lightpack



4. Connecting the Remote to the Lightpack

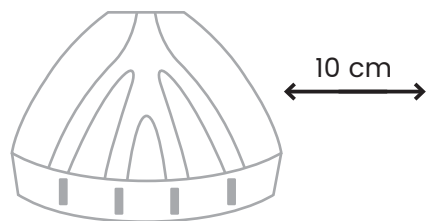
1. Press the  button (in several places).



2. The Remote will start blinking.



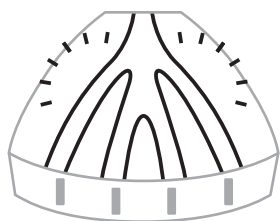
3. Place the Remote close to the Lightpack.



10 cm




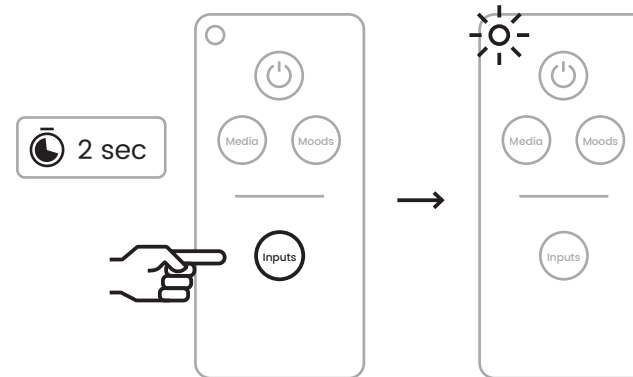
4. When connected, the Remote will blink on and off.



5. Manual Ribbon setup

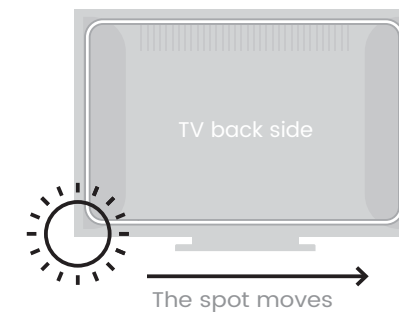
Skip this step if your TV aspect ratio is 16:9 or 16:10.


1. Press  button for 2 sec.

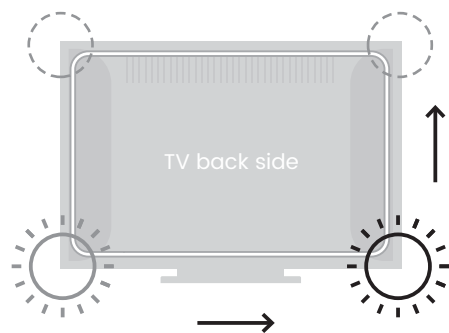


Led will light solid green

2. The light spot will start moving.

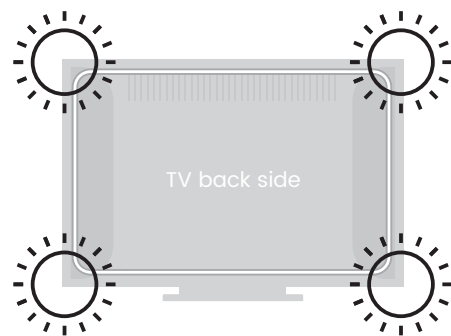


3. When the spot reaches a corner, push the  button.



The light spot will blink indicating that the Lightpack remembered the corner position. Then the spot will continue moving.

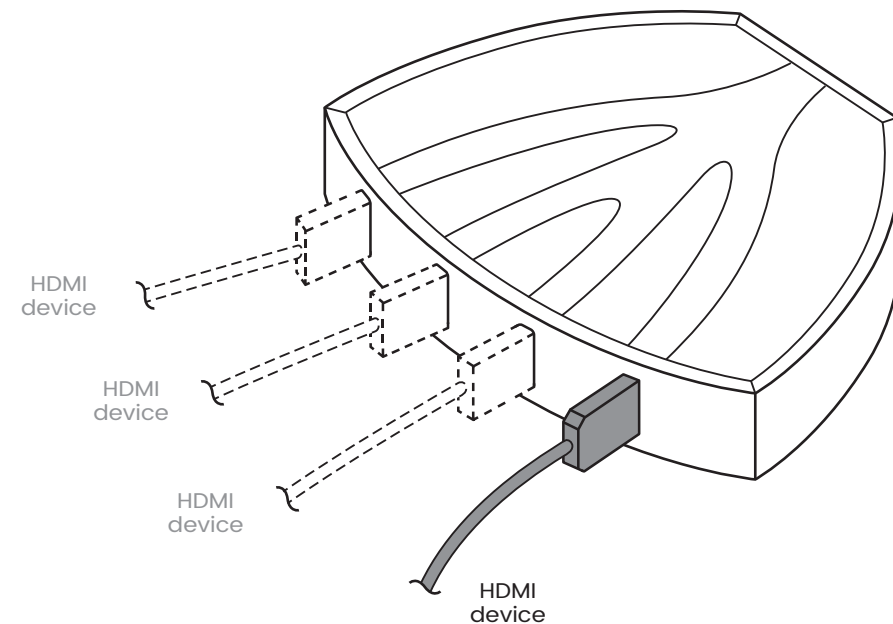
4. Repeat the process with all corners.




Upon finishing, the Lightpack will automatically exit the Manual Setup mode and remember the preferences.

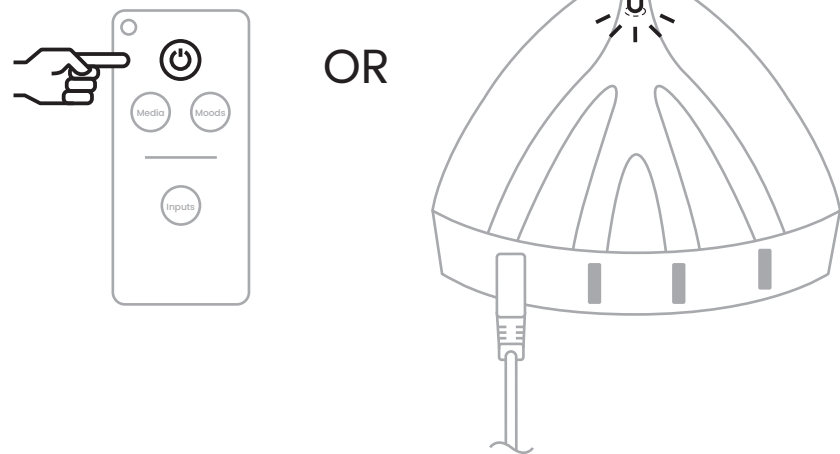
Connecting HDMI sources

Connect at least one HDMI device.




Turn the Lightpack on

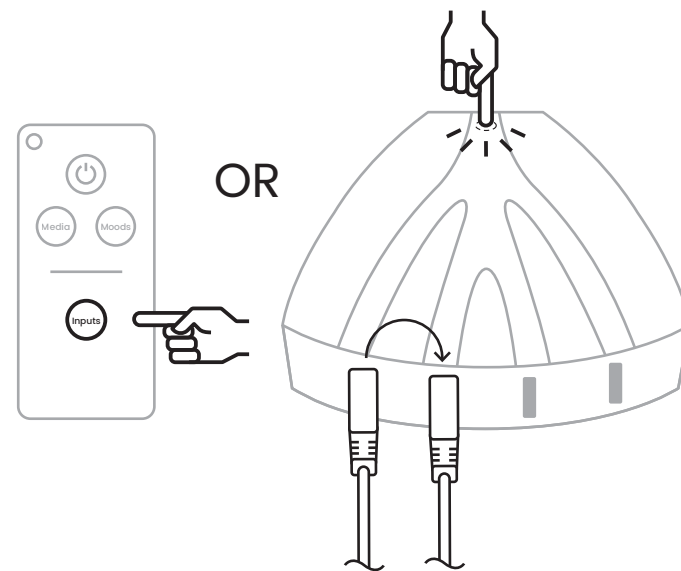
1. Turn on your TV and switch it to the HDMI mode.
2. Turn on the HDMI device connected to the Lightpack. It will turn on automatically.
3. To turn the Lightpack on or off manually, use the  button on the Remote or press and hold the button on the Lightpack.



OR




Switch HDMI input

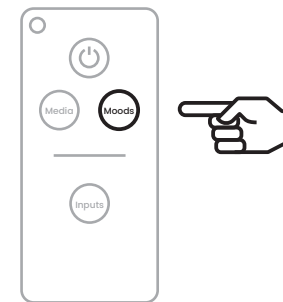
1. Press the  button on the Remote or press the button on the Lightpack. It will switch between active inputs, regardless of whether the Ribbon is on or off.



OR

“Moodlight” mode

1. To turn on the “Moodlight” mode, press the  button on the Remote.
2. To switch between moods, press the  button again.
3. To turn off the “Moodlight” mode, use the  button on the Remote or the Lightpack button.



Warning:

This device complies with Part 15 of the FCC Rules. Operation is subject to the following two conditions: (1) this device may not cause harmful interference, and (2) this device must accept any interference received, including interference that may cause undesired operation.

changes or modifications not expressly approved by the party responsible for compliance could void the user's authority to operate the equipment.

NOTE: This equipment has been tested and found to comply with the limits for a Class B digital device, pursuant to Part 15 of the FCC Rules. These limits are designed to provide reasonable protection against harmful interference in a residential installation. This equipment generates, uses and can radiate radio frequency energy and, if not installed and used in accordance with the instructions, may cause harmful interference to radio communications. However, there is no guarantee that interference will not occur in a particular installation. If this equipment does cause harmful interference to radio or television reception, which can be determined by turning the equipment off and on, the user is encouraged to try to correct the interference by one or more of the following measures:

- Reorient or relocate the receiving antenna.
- Increase the separation between the equipment and receiver.
- Connect the equipment into an outlet on a circuit different from that to which the receiver is connected.
- Consult the dealer or an experienced radio/TV technician for help.

NOTE: This device and its antenna(s) must not be co-located or operation in conjunction with any other antenna or transmitter

RF Exposure Statement

To maintain compliance with FCC's RF Exposure guidelines, This equipment should be installed and operated with minimum distance of 20cm the radiator your body. This device and its antenna(s) must not be co-located or operation in conjunction with any other antenna or transmitter