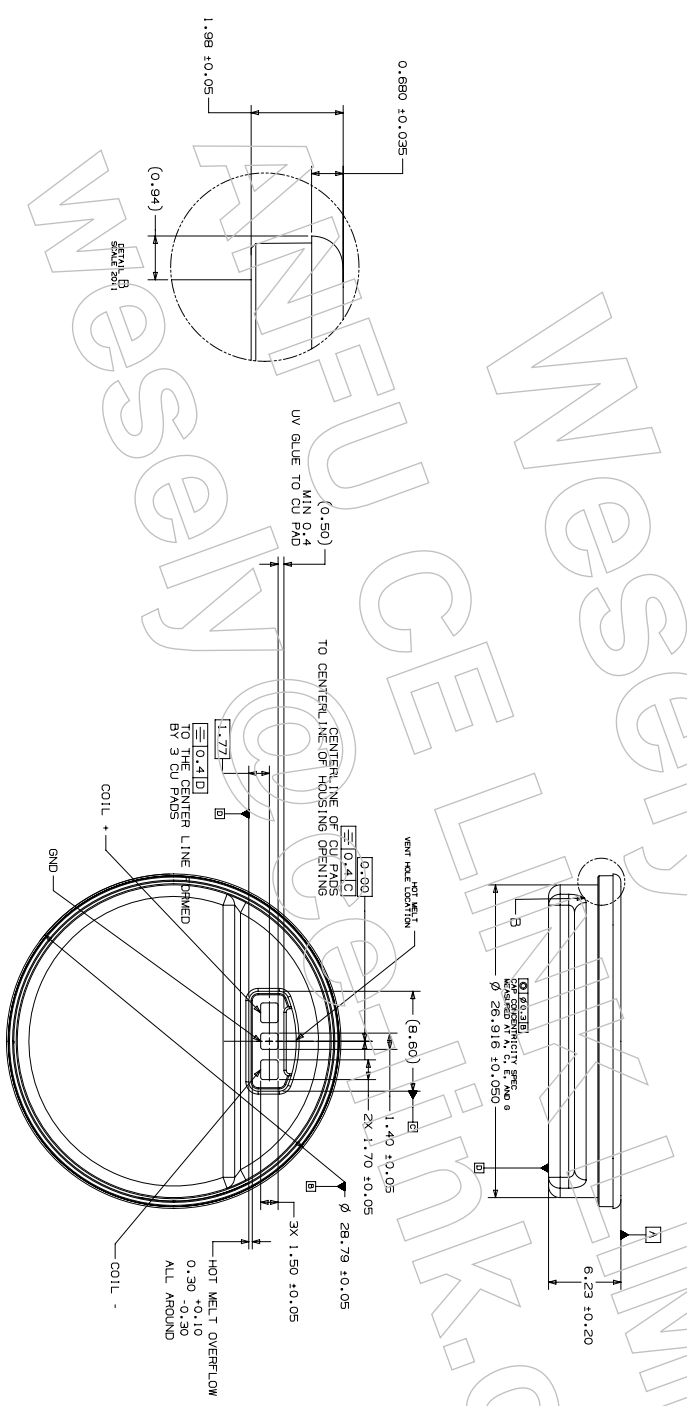
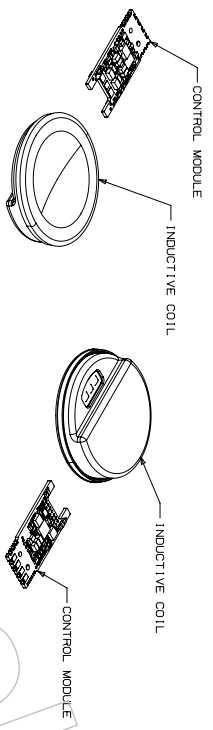


# 71.6 Watch Fast Charger Inductive Coil Module Dimensions

- NOTES** (UNLESS OTHERWISE SPECIFIED)
1. NO ELECTRICAL SHORTS BETWEEN GND PAD AND SURROUNDING METAL.
  2. THE TOP SURFACE OF THE INDUCTIVE COIL ASSEMBLY (DATUM A) SHALL BE 0.40MM  $\pm$ 0.25MM PROUD OF THE SURROUNDING SURFACE.
  3. COMPONENTS AND TERMINATIONS ON THE CONTROL MODULE SHALL BE FULLY ENCAPSULATED WITH A RIGID GLUE TO PROTECT COMPONENTS. LOCTITE UV9061F OR EQUIVALENT GLUE RECOMMENDED
  4. THE CONTROL MODULE SHOULD BE CONTAINED WITHIN A SHEET METAL ENCLOSURE TO THE THERMALLY CONDUCTIVE ENCLOSURE. THERMAL PASTE SHOULD BE USED TO THERMALLY BRIDGE THE CONTROL MODULE TO THE THERMALLY CONDUCTIVE TARGET OF AT LEAST 1.5 W/(M.K).



| REV | ECO | DESCRIPTION OF REVISION |
|-----|-----|-------------------------|
| 1   |     |                         |

|   |                    |  |                 |
|---|--------------------|--|-----------------|
| DO NOT SCALE DIMENSIONS<br>HIND MADE IN INDIA |                    | THE SCALE<br>NONE  | SHEET<br>1 OF 2 |
| DRAWING NUMBER<br>NX GENERATED                |                    | TITLE<br>APPLE WATCH FAST CHARGER MODULE   |                 |
| METRIC  |                    | Apple Inc.<br>NOTICE OF NON-COMPLIANCE REPORT<br>THE INFORMATION CONTAINED HEREIN IS PROPRIETARY AND CONFIDENTIAL TO APPLE INC. THE INFORMATION CONTAINED HEREIN IS NOT TO BE DISCLOSED OR USED IN ANY MANNER WITHOUT THE EXPRESS WRITTEN PERMISSION OF APPLE INC. |                 |
| DATE<br>APPLE INC.                            | DATE<br>APPLE INC. | DIMENSIONS ARE IN MILLIMETERS<br>UNLESS NOTED OTHERWISE  |                 |