

System Check_H2450

DUT: Dipole 2450 MHz; Type:D2450V2; SN:927

Communication System: CW; Frequency: 2450 MHz;Duty Cycle: 1:1

Medium: H2450 Medium parameters used: $f = 2450$ MHz; $\sigma = 1.77$ S/m; $\epsilon_r = 39.84$; $\rho = 1000$ kg/m³

Ambient Temperature : 22.2 °C; Liquid Temperature : 22.0 °C

DASY5 Configuration:

- Probe: EX3DV4 - SN3970; Calibrated: 2023/5/17;
- Electronics: DAE4 Sn1418; Calibrated: 2023/4/25
- Phantom: ELI v5.0; Type: QDOVA002AA; Serial: TP:1231
- Measurement SW: DASY52, Version 52.8 (7); SEMCAD X Version 14.6.10 (7164)

Pin=250mW/Area Scan (41x51x1): Interpolated grid: dx=2.000 mm, dy=2.000 mm

Maximum value of SAR (interpolated) = 10.3 W/kg

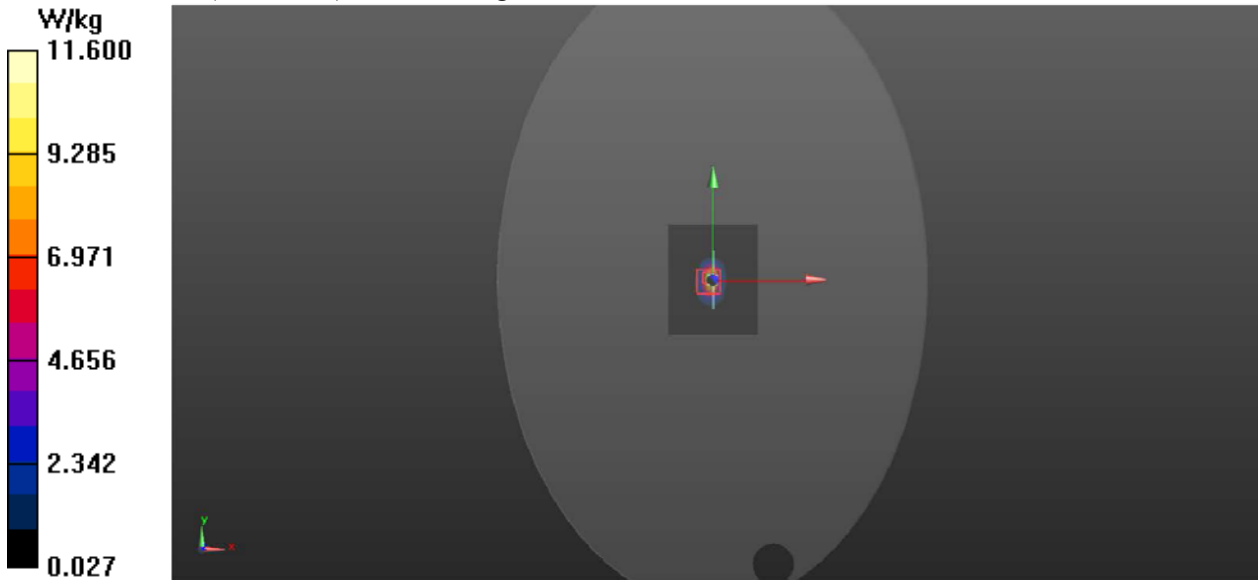
Pin=250mW/Zoom Scan (5x5x7)/Cube 0: Measurement grid: dx=5mm, dy=5mm, dz=5mm

Reference Value = 105.8 V/m; Power Drift = 0.16 dB

Peak SAR (extrapolated) = 30.4 W/kg

SAR(1 g) = 13.08 W/kg; SAR(10 g) = 6.11 W/kg

Maximum value of SAR (measured) = 11.6 W/kg



System Check_H5250

DUT: Dipole 5GHzV2;Type:D5GHzV2; SN:1169

Communication System: CW; Frequency: 5250 MHz;Duty Cycle: 1:1

Medium: H5G Medium parameters used: $f = 5250$ MHz; $\sigma = 4.76$ S/m; $\epsilon_r = 36.84$; $\rho = 1000$ kg/m³

Ambient Temperature : 22.1 °C; Liquid Temperature : 21.9 °C

DASY5 Configuration:

- Probe: EX3DV4 - SN3970; Calibrated: 2023/5/17;

- Electronics: DAE4 Sn1418; Calibrated: 2023/4/25

- Phantom: ELI v5.0; Type: QDOVA002AA; Serial: TP:1231

- Measurement SW: DASY52, Version 52.8 (7); SEMCAD X Version 14.6.10 (7164)

Pin=100mW/Area Scan (7x9x1): Interpolated grid: dx=2.000 mm, dy=2.000 mm

Maximum value of SAR (interpolated) = 34.2 W/kg

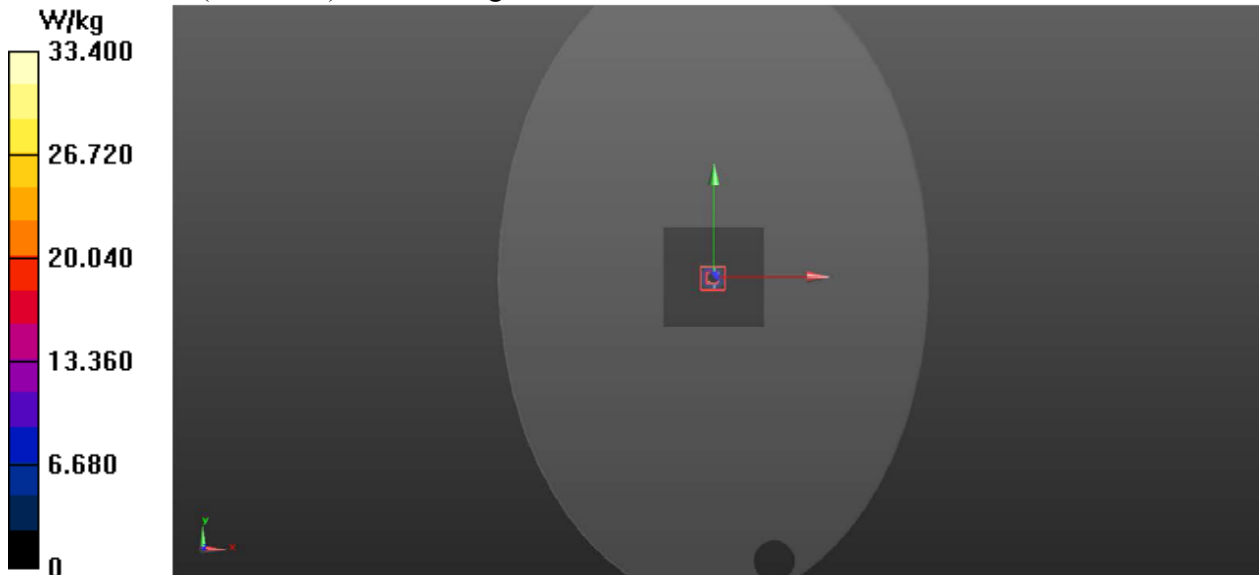
Pin=100mW/Zoom Scan (8x8x13)/Cube 0: Measurement grid: dx=4mm, dy=4mm, dz=2mm

Reference Value = 60.418 V/m; Power Drift = 0.10 dB

Peak SAR (extrapolated) = 37.6 W/kg

SAR(1 g) = 7.66 W/kg; SAR(10 g) = 2.11 W/kg

Maximum value of SAR (measured) = 33.4 W/kg



System Check_H5600

DUT: Dipole 5GHzV2;Type:D5GHzV2; SN:1169

Communication System: CW; Frequency: 5600 MHz;Duty Cycle: 1:1

Medium: H5G Medium parameters used: $f = 5600$ MHz; $\sigma = 5.20$ S/m; $\epsilon_r = 36.13$; $\rho = 1000$ kg/m³

Ambient Temperature : 22.4 °C; Liquid Temperature : 22.2 °C

DASY5 Configuration:

- Probe: EX3DV4 - SN3970; Calibrated: 2023/5/17;

- Electronics: DAE4 Sn1418; Calibrated: 2023/4/25

- Phantom: ELI v5.0; Type: QDOVA002AA; Serial: TP:1231

- Measurement SW: DASY52, Version 52.8 (7); SEMCAD X Version 14.6.10 (7164)

Pin=100mW/Area Scan (7x9x1): Interpolated grid: dx=2.000 mm, dy=2.000 mm

Maximum value of SAR (interpolated) = 22.1 W/kg

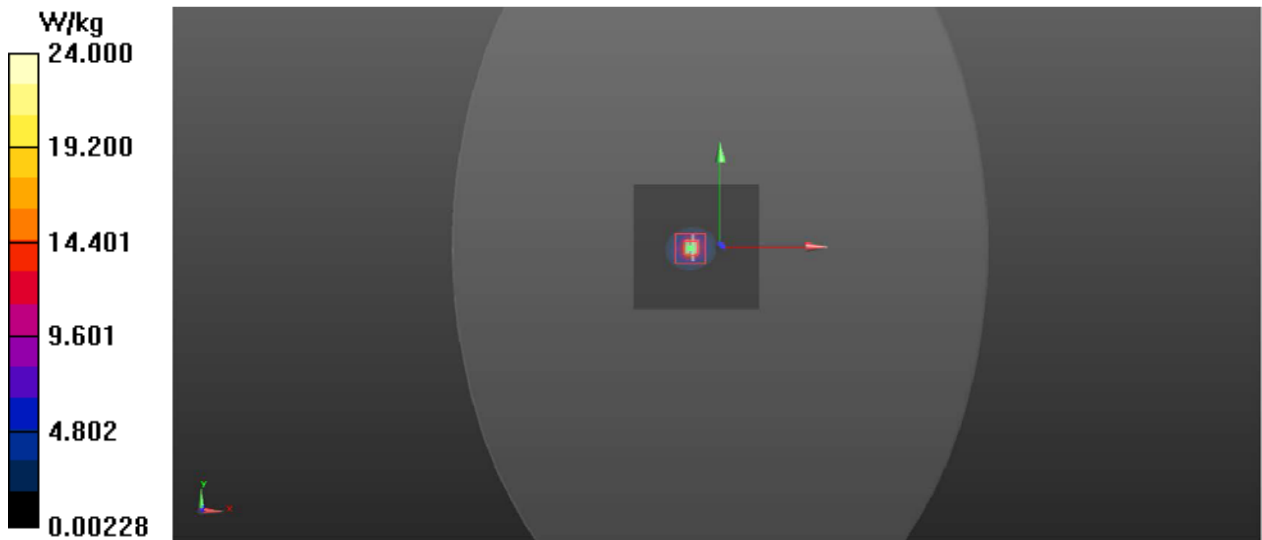
Pin=100mW/Zoom Scan (8x8x13)/Cube 0: Measurement grid: dx=4mm, dy=4mm, dz=2mm

Reference Value = 59.384 V/m; Power Drift = 0.13 dB

Peak SAR (extrapolated) = 39.2 W/kg

SAR(1 g) = 7.83 W/kg; SAR(10 g) = 2.20 W/kg

Maximum value of SAR (measured) = 24.0 W/kg



System Check_H5750

DUT: Dipole 5GHzV2;Type:D5GHzV2; SN:1169

Communication System: CW; Frequency: 5750 MHz;Duty Cycle: 1:1

Medium: H5G Medium parameters used: $f = 5750$ MHz; $\sigma = 5.44$ S/m; $\epsilon_r = 35.62$; $\rho = 1000$ kg/m³

Ambient Temperature : 21.8 °C; Liquid Temperature : 21.6 °C

DASY5 Configuration:

- Probe: EX3DV4 - SN3970; Calibrated: 2023/5/17;

- Electronics: DAE4 Sn1418; Calibrated: 2023/4/25

- Phantom: ELI v5.0; Type: QDOVA002AA; Serial: TP:1231

- Measurement SW: DASY52, Version 52.8 (7); SEMCAD X Version 14.6.10 (7164)

Pin=100mW/Area Scan (7x9x1): Interpolated grid: dx=2.000 mm, dy=2.000 mm

Maximum value of SAR (interpolated) = 21.5 W/kg

Pin=100mW/Zoom Scan (8x8x13)/Cube 0: Measurement grid: dx=4mm, dy=4mm, dz=2mm

Reference Value = 47.512 V/m; Power Drift = 0.01 dB

Peak SAR (extrapolated) = 36.0 W/kg

SAR(1 g) = 7.55 W/kg; SAR(10 g) = 2.15 W/kg

Maximum value of SAR (measured) = 22.9 W/kg

