

## UHF RFID Card Reader 6m Long Range Model # SLR12



The UHF RFID Middle Range Reader is a high performance UHF integrated reader .Based on proprietary efficient digital signal processing algorithm, it supports fast tag read/write operation with high identification rate. It can be widely applied in many RFID application systems such as logistics, access control, and anti-counterfeit and industrial production process control system.

Description:	Basic Parameters	Model	SLR12
--------------	------------------	-------	-------

Type UHF Passive Middle Range Integrated reader

Dimensions	235x235x57mm	Net Weight	900g
------------	--------------	------------	------

Operating Temp. -10 ~ +60°C      Storage Temp. -25 ~ +80°C

Interface	RS232/UART, RS485, Wiegand26/34	Indicator	Buzzer
-----------	---------------------------------	-----------	--------

Power Supply +DC 9V (equipped with power adaptor)

## RFID Parameters

Frequency Range 902-928MHz

Protocols ISO18000-6B, ISO18000-6C /EPC GEN2

Work Mode	FHSS hopping and fixed frequency
-----------	----------------------------------

RF Power 19.31dBm

Antenna	Built-in 8dbi circularly polarized antenna
---------	--

Read Range	6M, tag and environment dependent
------------	-----------------------------------

Read Mode    Active, Answer, Trigger working mode, Software Programmable

Vehicle Moving Speed 80Km/h

Software Provide SDK,DLL and Demonstration Software, sample code to facilitate further development.

<b>Red:</b> +12VDC	<b>Black:</b> GND
<b>Green:</b> DATA0 or 485R-	<b>Brown:</b> 232RXD
<b>White:</b> DATA1 or 485R+	<b>Yellow:</b> 232TXD
<b>Gray:</b> TRIGGER	<b>Blue:</b> GND

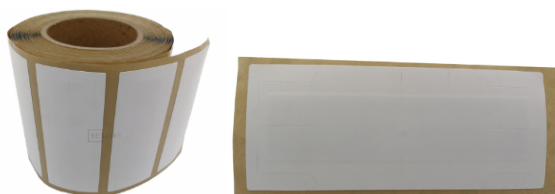
## UHF card

- Material: PVC,PET
- Frequency: 902-928MHz
- Storage capacity: The only TID 64bit, 96/240bitEPC, 512bit User Area
- Reading Distance: 3M~10M stable reading(depending on the reader design)
- Write Endurance(cycles): More than 100,000
- Data Retention: 10 years   - Dimensions: 85.6 \* 54\* 0.8mm   - Weight: 7.5g
- Operating Temperature: -10°C to +70°C   - Storage Temperature: -10°C to +70°C
- Applications: Vehicle management, personnel management, etc.



## UHF Sticker

- Size 110\*40\*0.3mm   Inlay Material PET+AL
- Packaging Material   PET   Standard / Protocol   EPC CLASS1 GEN2/ ISO 18000-6C
- Amount   100pcs/bag
- Operating Frequency
- FCC (USA)   902MHz~928MHz
- Performance
- Memory   512bits
- Chip Alien Higgs-3
- Operating Mode Read / Write, preset via software,average less than 10ms/64bits for single card reading. Reading Distance   8~18M (Depend on reader and environment)
- Environment parameters
- Operating Temp.   -30~+80 (Celsius)
- Storage Temp. -40~+120 (Celsius)



## FCC WARNING

This device complies with part 15 of the FCC Rules. Operation is subject to the following two conditions: (1) this device may not cause harmful interference, and (2) this device must accept any interference received, including interference that may cause undesired operation.

Any changes or modifications not expressly approved by the party responsible for compliance could void the user's authority to operate the equipment.

NOTE: This equipment has been tested and found to comply with the limits for a Class B digital device, pursuant to Part 15 of the FCC Rules. These limits are designed to provide reasonable protection against harmful interference in a residential installation. This equipment generates, uses and can radiate radio frequency energy and, if not installed and used in accordance with the instructions, may cause harmful interference to radio communications. However, there is no guarantee that interference will not occur in a particular installation.

If this equipment does cause harmful interference to radio or television reception, which can be determined by turning the equipment off and on, the user is encouraged to try to correct the interference by one or more of the following measures:

- Reorient or relocate the receiving antenna.
- Increase the separation between the equipment and receiver.
- Connect the equipment into an outlet on a circuit different from that to which the receiver is connected.
- Consult the dealer or an experienced radio/TV technician for help.

To maintain compliance with FCC's RF Exposure guidelines, This equipment should be installed and operated with minimum distance between 20cm the radiator your body: Use only the supplied antenna.