

Smart Dimmer User Manual V01

---0-10V Model

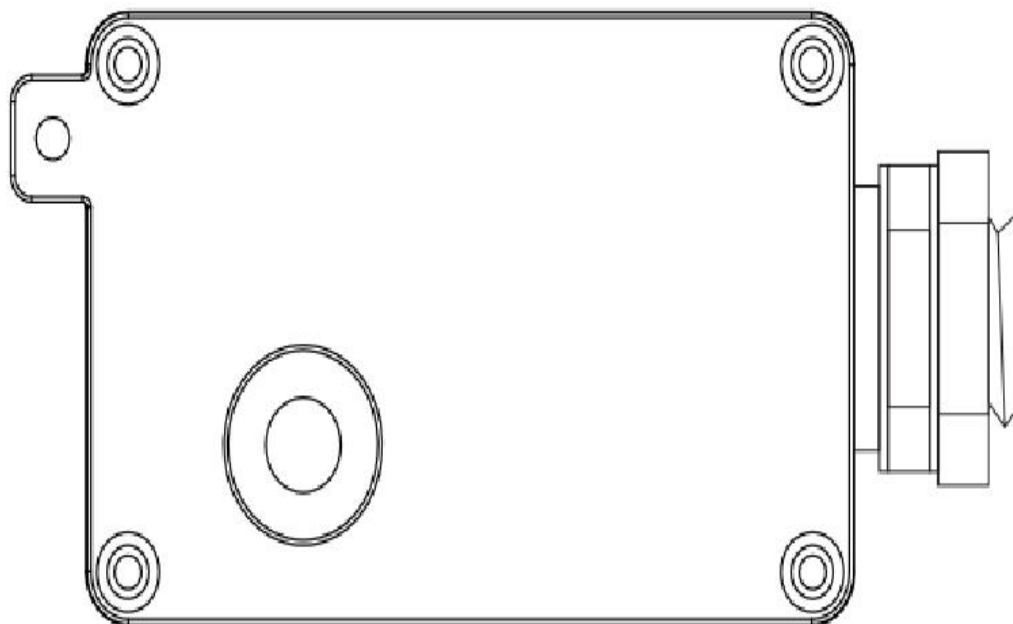
TECO Lighting Team | May 2019 | HUIZHOU
Lighting Solution-We Are Exceptional

Table Of Content

| | |
|----------------------------------------------------|----|
| 1. Product Introduction | 3 |
| 2. Step1: Download & Configure App | 5 |
| 3. Step2: Installation & Electrical Connection | 8 |
| 4. Step3: Pairing--Associate App With Smart Dimmer | 10 |
| 5. Step4: Have Fun | 14 |
| 6. Step5: FAQs | 18 |

Smart Dimmer Introduction

This device complies with part 15 of the FCC Rules



0-10V Dimming Model

- Accept 120-277VAC, 50/60HZ input.
- Able to cut off load completely.
- It outputs 0-10V signal to loads.
- Max loading upto 1000W@120V, 2000W@277V.
- **Bluetooth**
- Applications:
 - 0-10V dimmable load
 - All electrical load (work as on/off switch)
- 1 Channel (1000W*1) is on sale.
- 3 Channels (500W*3) is coming soon.

Smart Dimmer Introduction

FCC Caution:

Any Changes or modifications not expressly approved by the party responsible for compliance could void the user's authority to operate the equipment.

This device complies with part 15 of the FCC Rules. Operation is subject to the following two conditions: (1) This device may not cause harmful interference, and (2) this device must accept any interference received, including interference that may cause undesired operation.

Note: This equipment has been tested and found to comply with the limits for a Class B digital device, pursuant to part 15 of the FCC Rules. These limits are designed to provide reasonable protection against harmful interference in a residential installation. This equipment generates, uses and can radiate radio frequency energy and, if not installed and used in accordance with the instructions, may cause harmful interference to radio communications. However, there is no guarantee that interference will not occur in a particular installation. If this equipment does cause harmful interference to radio or television reception, which can be determined by turning the equipment off and on, the user is encouraged to try to correct the interference by one or more of the following measures:

- Reorient or relocate the receiving antenna.
- Increase the separation between the equipment and receiver.
- Connect the equipment into an outlet on a circuit different from that to which the receiver is connected.
- Consult the dealer or an experienced radio/TV technician for help.

This equipment complies with FCC radiation exposure limits set forth for an uncontrolled environment. This equipment should be installed and operated with minimum distance 20cm between the radiator & your body.

This transmitter must not be co-located or operating in conjunction with any other antenna or transmitter

Smart Dimmer Introduction

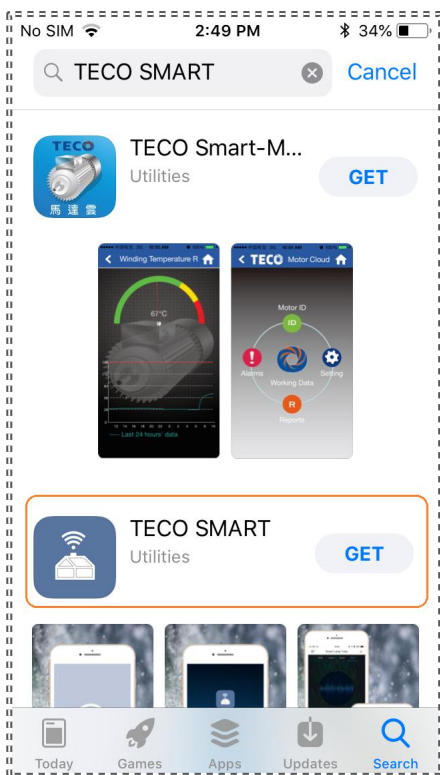
0-10V Dimming Model

| Module | Communication distance(M) | Max Mesh unit | Features-1 (No cloud service) | Features-1 (Enable cloud service) | Features-3 (Enable gateway) |
|-----------|---------------------------|---------------|----------------------------------|----------------------------------------------------------|----------------------------------------------------------|
| BlueTooth | 15 | 50 | Basic On/off dimming | Timer Share Group Alexa, ECHO,IFTTT | Timer Share Group Alexa, ECHO,IFTTT |

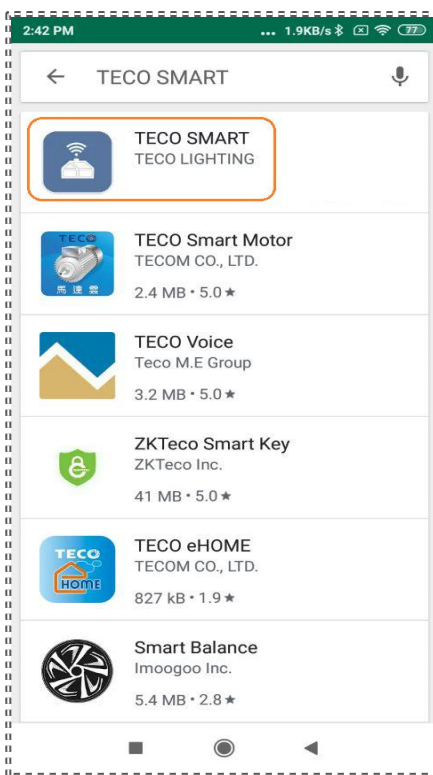
Table Of Content

| | |
|----------------------------------------------------|----|
| 1. Product Introduction | 3 |
| 2. Step1: Download & Configure App | 5 |
| 3. Step2: Electrical Connection | 8 |
| 4. Step3: Pairing--Associate App With Smart Dimmer | 10 |
| 5. Step4: Have Fun | 14 |
| 6. Step5: FAQs | 18 |

Step1: Download App (For Both IOS And Android System)



TECO SMART IN Apple Store



TECO SMART IN Google Play

➤ Scan the **QR Code*1** in below with cell phone

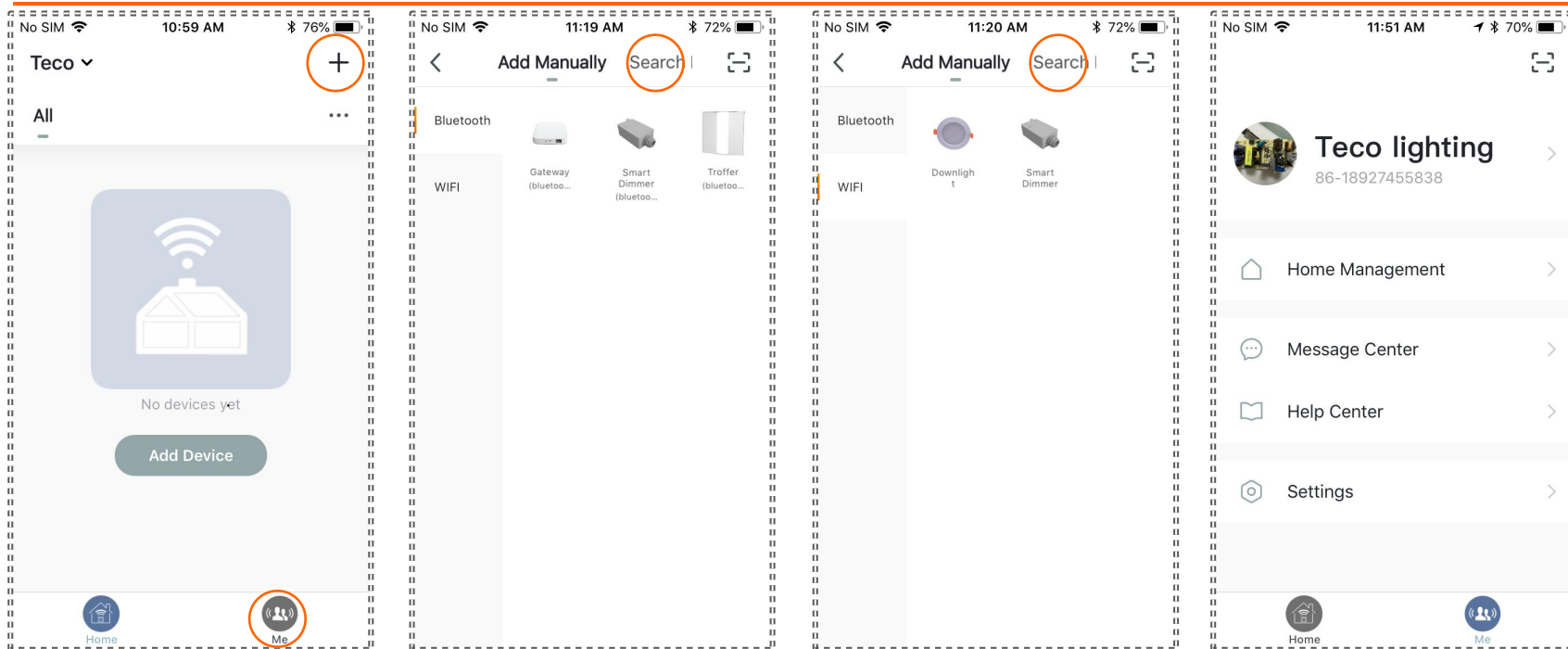


- For IOS system , link automacally jumps to Apple Store.
- For Android system, link goes to Google Play.
- Search App named “TECO SMART” In Apple Store or Google Play In case without page jump.

➤ Download & Install App “**TECO SMART**”

*1 QR Code is also attached on product

Step1: Configure App (For Both IOS And Android System)



PIC-1 Main page

PIC-2 Bluetooth devices

PIC-3 Wi-Fi devices

PIC-4 Personal profile

- Register and log in “TECO SMART”, main page will be loaded as pic-1 shown.
- Tap “+” on the top right corner to add devices, pic-2 is the page of adding blueooth devices, pic-3 is Wi-Fi devices. at these two pages, Tapping “search” is also able to add devices.
- Tap “me” on the bottom right corner to modify/update App personal profiles.

Table Of Content

| | |
|----------------------------------------------------|----|
| 1. Product Introduction | 3 |
| 2. Step1: Download & Configure App | 5 |
| 3. Step2:Installation & Electrical Connection | 8 |
| 4. Step3: Pairing--Associate App With Smart Dimmer | 10 |
| 5. Step4: Have Fun | 14 |
| 6. Step5: FAQs | 18 |

Step2: Electrical Connection

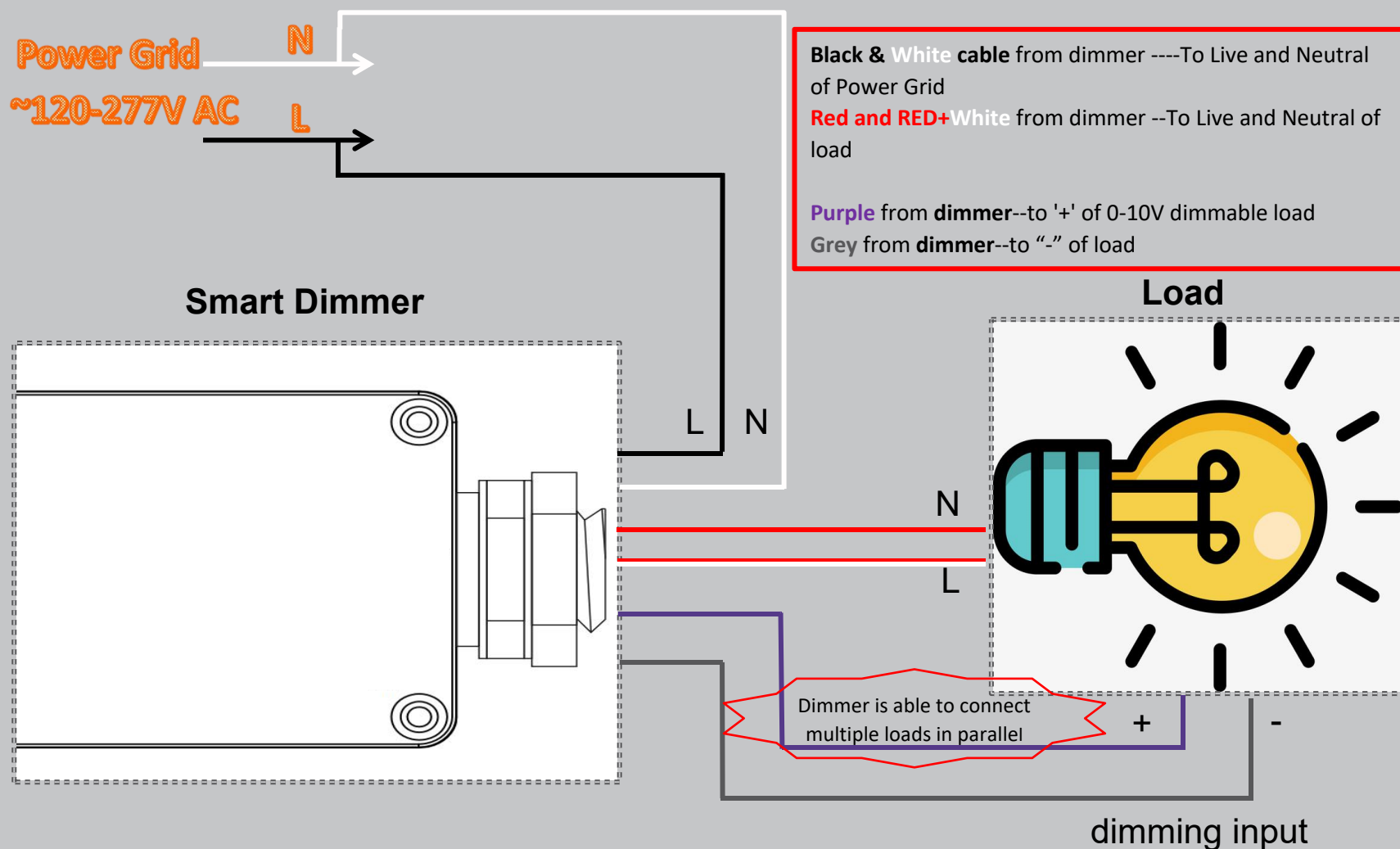
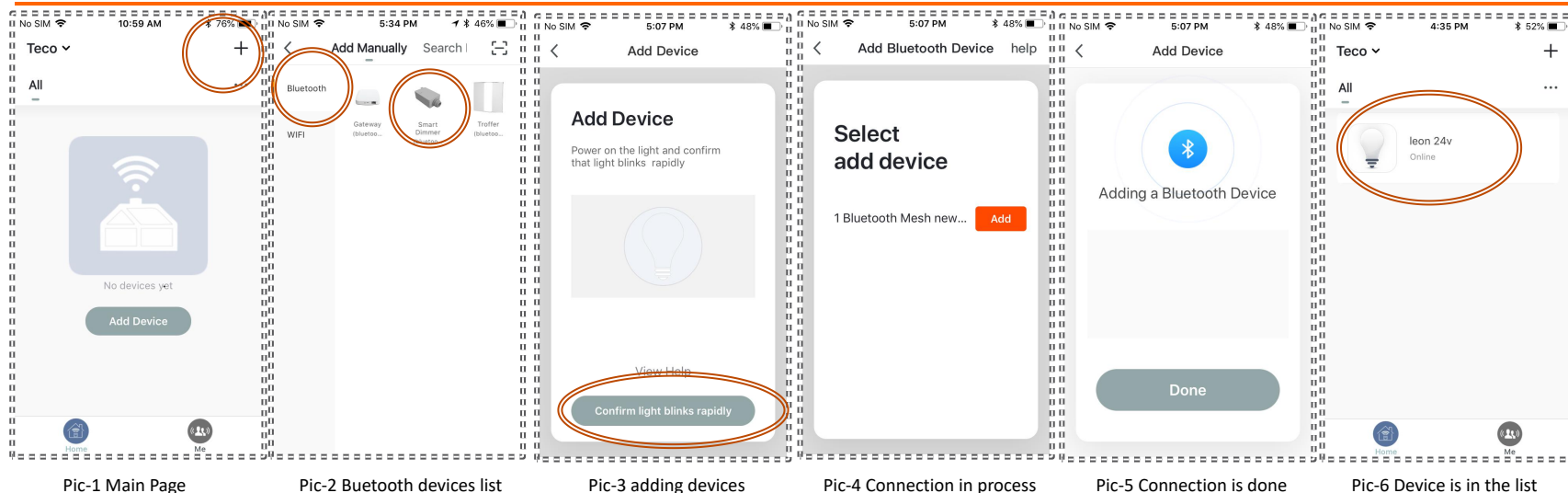


Table Of Content

| | |
|----------------------------------------------------|----|
| 1. Product Introduction | 3 |
| 2. Step1: Download & Configure App | 5 |
| 3. Step2: Electrical Connection | 8 |
| 4. Step3: Pairing--Associate App With Smart Dimmer | 10 |
| 5. Step4: Have Fun | 14 |
| 6. Step5: FAQs | 18 |

Step3: Pairing--Associate App With Smart Dimmer (Bluetooth Version---Dimmer)



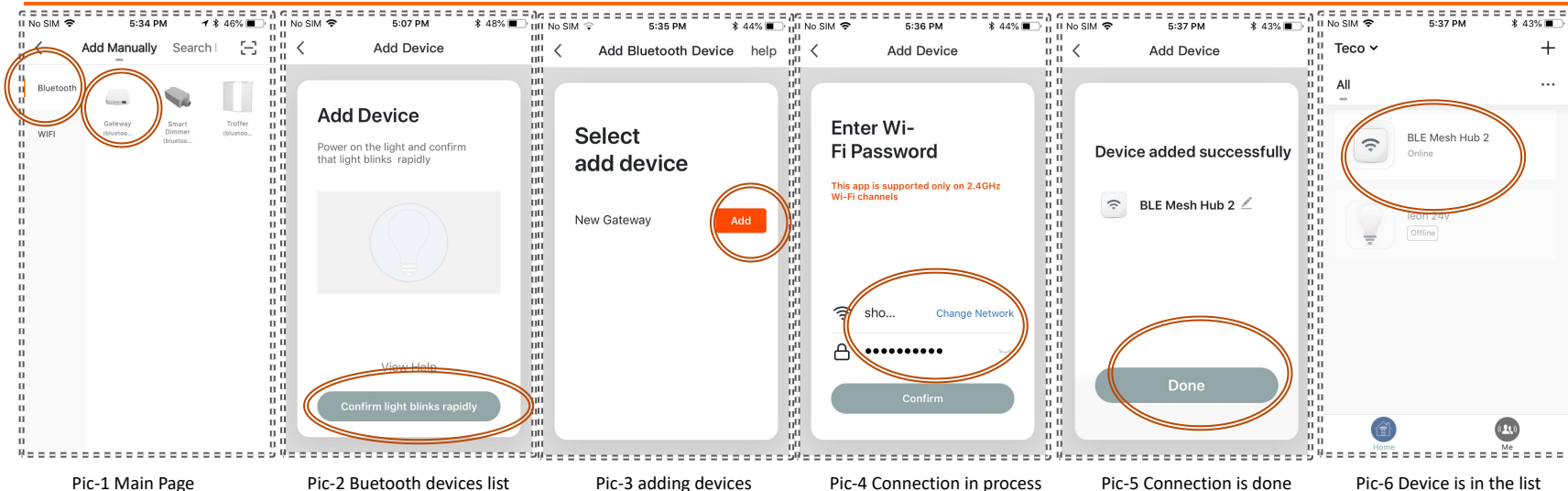
For **Bluetooth** version

- Following step 2 to get electrical connection ready and login App, enable cell phone bluetooth and Wi-Fi, and ensure router is well connected to internet.
- Power on units and wait for 20seconds (initializing).
- Making dimmer entering pairing mode by switch on/off dimmer*¹ for 3 times till load starts blinking *².
- Tap “+” in main page(see pic-1) ---> “Bluetooth” (see pic-2) ---> “Smart Dimmer” (see pic-2).
- Follow pic-3 to pic-6 to complete device pairing and loading.

*1: switch on/off dimmer is actually to turn on/off AC input of dimmer, make it switched on and off.

*2: In some cases, load(like lamps) is completely turned off , or blinking in difference frequency.

Step3: Pairing--Associate App With Smart Dimmer (Bluetooth Version---Gateway)



Gateway

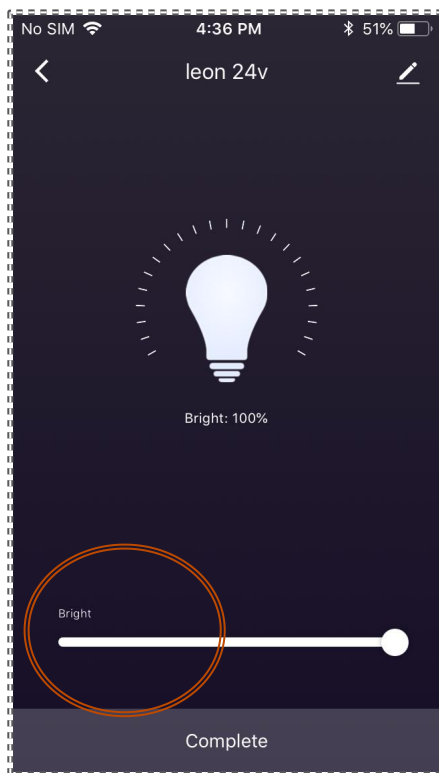
- Connect Gateway to a 5V,500mA(or above) adaptor, login App, enable cell phone bluetooth and Wi-Fi, and ensure router is well connected to internet.
- Power on units and wait for 20 seconds(initializing).
- Make gateway going into pairing mode by pressing and holding the **button**(see right pic) for 5 seconds.
- Red led on gateway starts blinking (being in pairing mode).
- Tap "+" in main page ---> "Bluetooth" (see pic-1) --->"gateway" (see pic-1).
- Follow pic-2 to pic-6 to complete gateway pairing and loading



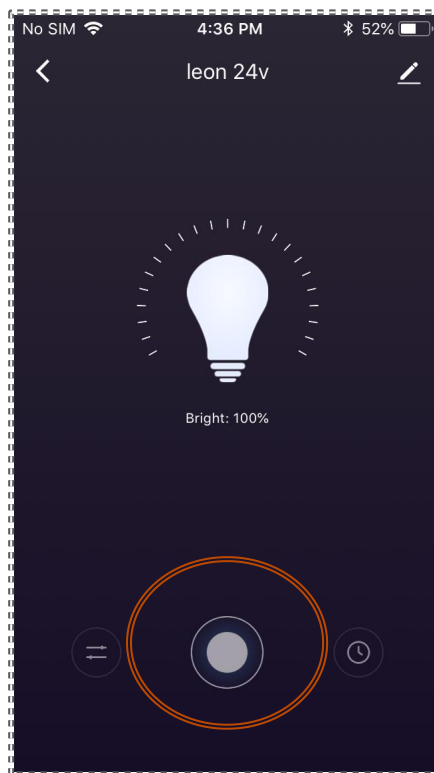
Table Of Content

| | |
|----------------------------------------------------|----|
| 1. Product Introduction | 3 |
| 2. Step1: Download & Configure App | 5 |
| 3. Step2: Electrical Connection | 8 |
| 4. Step3: Pairing--Associate App With Smart Dimmer | 10 |
| 5. Step4: Have Fun | 14 |
| 6. Step5: FAQs | 18 |

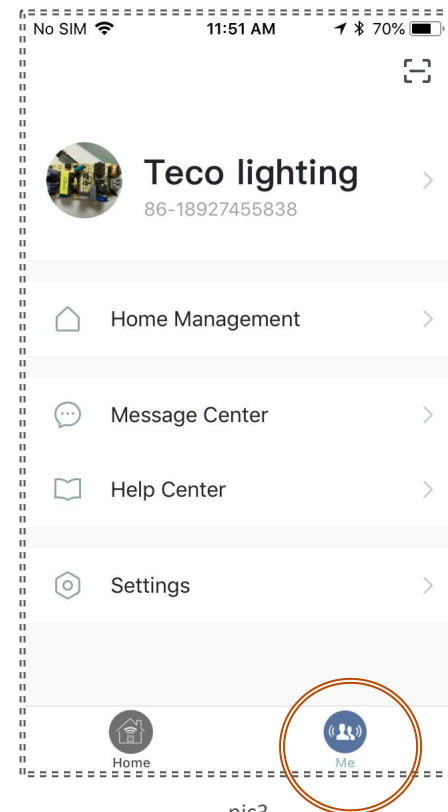
Step4: Have Fun--Turn on/off load



pic1



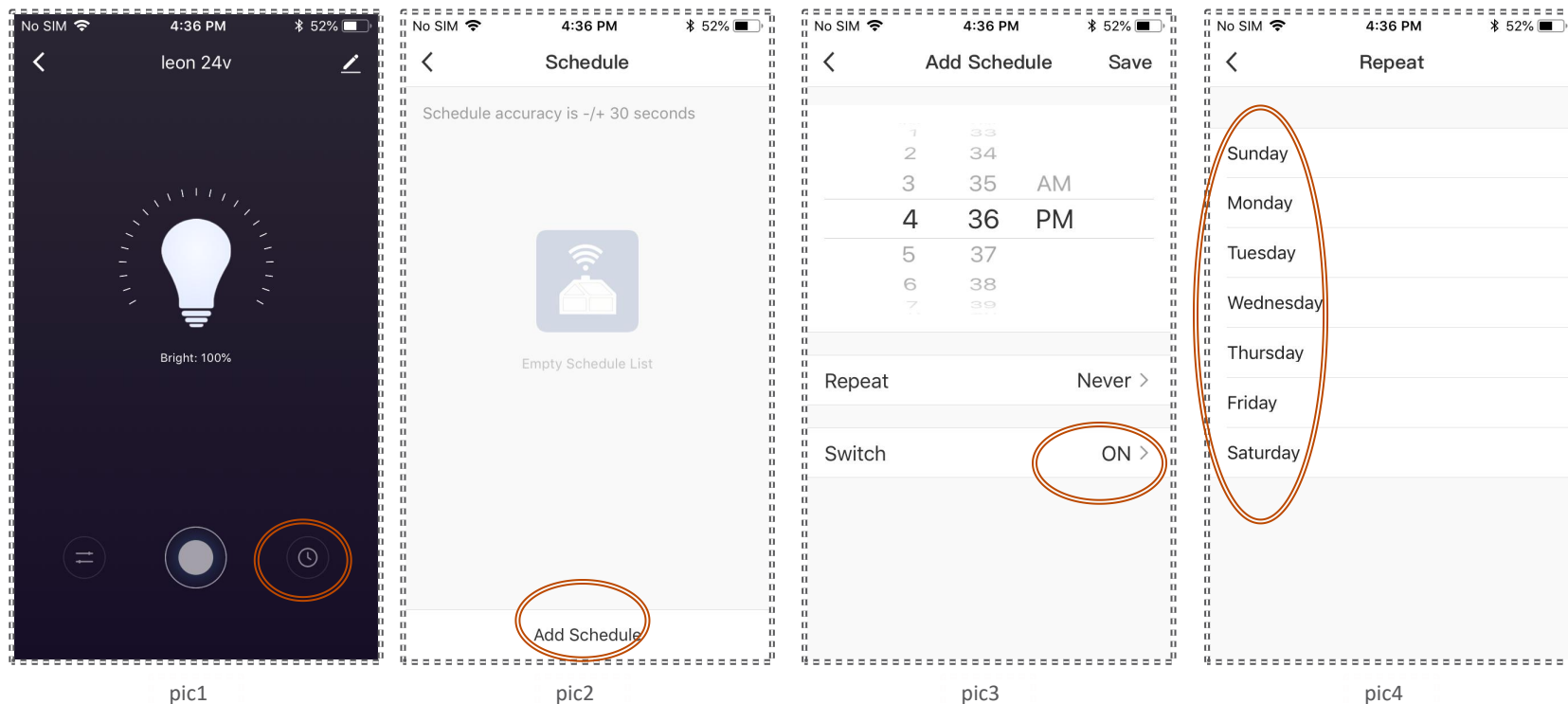
pic2



pic3

- After device is successfully loaded. it's easy to change brightness by moving the "Bright" bar, brightness resolution is 1%.
- Dimmer is also able to switch on/off load by tapping the round button as pic2 shown.
- Tap "Me" to change personal information.

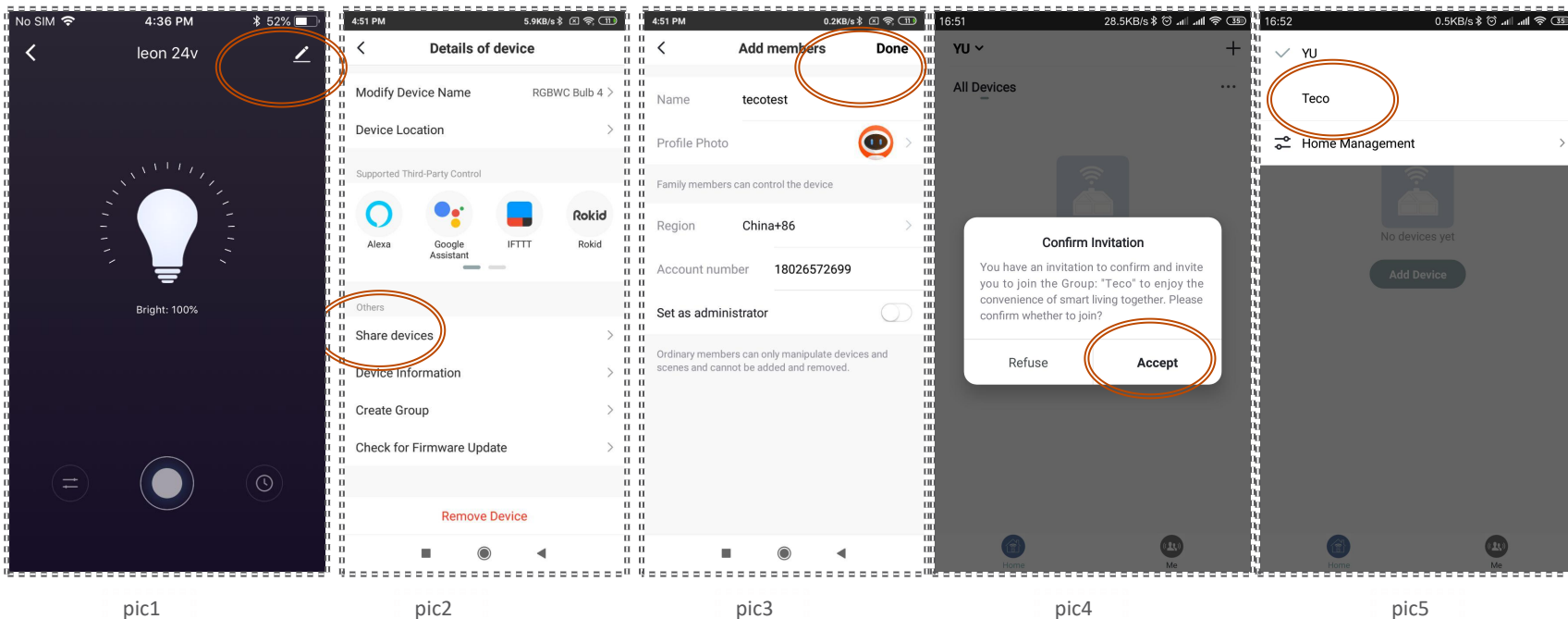
Step4: Have Fun--Timer(need enable cloud service)



- App involved timer, taping the “Clock” Icon is to set timing switch on/off the dimmer.
- ✓ Be noted is that the bluetooth version needs a working gateway to enable timer , in parallel, cell phone must connect to Wi-Fi.
 - ✓ Ensure cell phone is well connected Wi-Fi for Wi-Fi version smart dimmer.

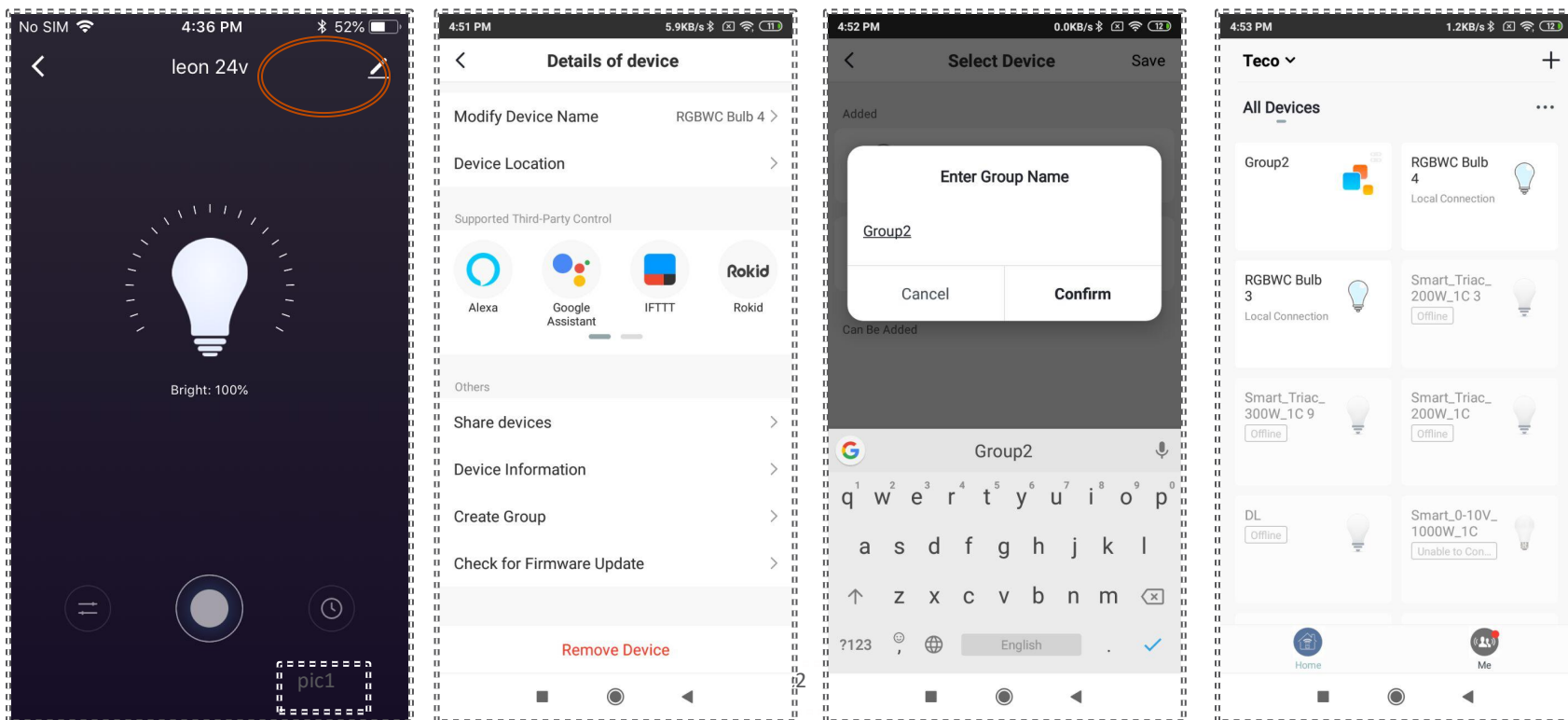
*1: In some cases, load(like lamps) is completely turned off load, or blinking in difference frequency.

Step4: Have Fun--Share devices(need enable cloud service)



- Select any device in the list.
- Click the “pen” Icon--->Share devices--->key in name and account number
- The account has been added will show up a prompt as “pic4”. click “accept”
- Click home management in the top left. select sharing account name.
- Then will see all device from sharing account.

Step4: Have Fun--Grouping(need enable cloud service)



- Select any device in the list.
- Click the “pen” Icon--->Create Group--->key in grouping name.Then will see all device from sharing account.

Table Of Content

| | |
|----------------------------------------------------|----|
| 1. Product Introduction | 3 |
| 2. Step1: Download & Configure App | 5 |
| 3. Step2: Electrical Connection | 8 |
| 4. Step3: Pairing--Associate App With Smart Dimmer | 10 |
| 5. Step4: Have Fun | 14 |
| 6. Step5: FAQs | 18 |

Step5: FAQs

Q1: Can not make dimmer going into pairing mode.

A1: Power on dimmer and load, wait for 1 minute or longer.

Q2: Load like lamps donot blink during pairing mode.

A2: It does not matter pairing, go ahead as long as App can seek out dimmer.

Q3: Failed to add dimmer.

A3: Wi-Fi signal matters connection. insure network is not too weak, let cellphone, dimmer, router sit closer.

In case signal is strong but still canot get dimmer connected, please remove load, make connection and then connect load.

Q4: Bluetooth can not use timer.

A4: Make Gateway is properly working.

Q5: Power on load but load canot start up.

A5: In case inductance loads or in case of smart dimmer is driving heavy loads, user may need to power on/off load for twice.

Q6: Group two different loads which in different network.

A6: It works.