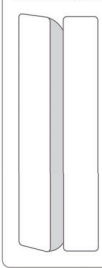


Lighting Bar

PRECAUTIONS

- Do not install the bars in places with high temperatures, excessive humidity or direct sunlight.
- Do not place heavy objects on the equipment.
- Do not use chemical or corrosive products to clean it.
- Any unauthorized repair will void the warranty.
- Do not cut the cable.
- Avoid hitting or dropping the equipment.
- Children should be supervised to ensure that they do not use the appliance as a toy.

Luminarias LED tipo barra



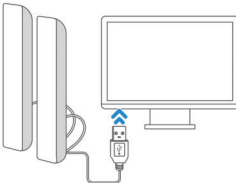
Bases para escritorio



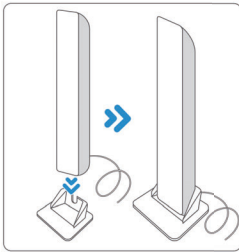
Soportes para pared



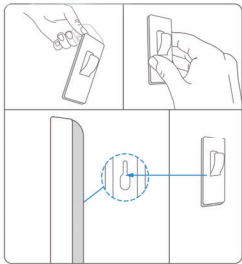
You can connect the bars to a USB port on your screen or your PC.



Attach the bars with the desk bases.



1. Peel off the adhesive backing, and place the wall mounts on a clean, smooth surface.
2. Mount the bars on the brackets.



Press the multifunction button 2 times continuously to turn the bars on or off. Press the button to switch between lighting modes.



CONSIDERATIONS

Have a smart device, such as a cell phone or tablet on hand. It is necessary to have access to the Google or Apple app store, as well as the corresponding login data and passwords. Identify your Wi-Fi network name and password. Please confirm that the Wi-Fi network router is working on the 2.4 GHz band and not 5 GHz, as the equipment only works on 2.4 GHz. Turn off any Wi-Fi extenders during setup. Verify that the router does not have limitations on the number of devices connected. Register a user account. On your cell phone, enter the application store to download and install the app. Download and install the app. AVAILABLE ON Google Play



FCC WARNING

This device complies with part 15 of the FCC Rules. Operation is subject to the following two conditions: (1) this device may not cause harmful interference, and (2) this device must accept any interference received, including interference that may cause undesired operation. Any changes or modifications not expressly approved by the party responsible for compliance could void the user's authority to operate the equipment.

NOTE: This equipment has been tested and found to comply with the limits for a Class B digital device, pursuant to Part 15 of the FCC Rules. These limits are designed to provide reasonable protection against harmful interference in a residential installation. This equipment generates, uses and can radiate radio frequency energy and, if not installed and used in accordance with the instructions, may cause harmful interference to radio communications.

However, there is no guarantee that interference will not occur in a particular installation. If this equipment does cause harmful interference to radio or television reception, which can be determined by turning the equipment off and on, the user is encouraged to try to correct the interference by one or more of the following measures:

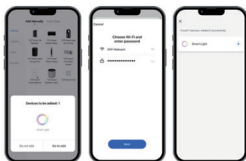
- Reorient or relocate the receiving antenna.
 - Increase the separation between the equipment and receiver.
 - Connect the equipment into an outlet on a circuit different from that to which the receiver is connected.
 - Consult the dealer or an experienced radio/TV technician for help.
- To maintain compliance with FCC's RF Exposure guidelines, This equipment should be installed and operated with minimum 20cm distance between the radiator and your body. Use only the supplied antenna.



Wi-Fi settings
It is likely that the first time you enter the app you will be required to accept or deny access to Bluetooth permissions and then select Go to application option to proceed. Before starting, make sure that the illumination of the bars is flashing; if this does not happen, press and hold the multifunction button until it starts flashing (this indicates that the bars are in setup standby mode).



1. Turn on the Bluetooth of your cell phone to optimize the connection.
2. In the app select the + on (on the upper right side) to add a team.



The add device menu should pop up automatically.

Enter the network details if prompted.

Wait for the device to add.



Static Colour
Colour the whole light bar by using the filler tool.

Use the draw tool to create patterns by colouring a single pixel.

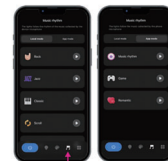
Use the eraser tool to remove colour from a single pixel.



The gradient tool can blend colours together.

Dynamic Colour
- Choose from preset colour patterns with movement effects.

DIY Custom Colour
- Create your own light effects by pressing on the ADD+ button.



Music Local Mode
- Uses the built-in microphone to sync with sounds.

Music App Mode
- Syncs with the sounds playing on your phone.

Specifications
Dimensions: 45 x 30 x 280 mm
Kelvins: RGBIC, 16 million colours
Input: DC 5V/1A
IP Rating: IP20. For indoor use only
WiFi: 2.4GHz
Warranty: 2 Year Warranty
Material: ABS

Cautions & Warnings
The light bars are not waterproof and are suitable for indoor use only. The working temperature range is between 10°C to 40°C. Do not install the light bars near heat sources. Avoid installing the light bars near potentially dangerous sources such as candles and liquid-filled objects. The light source of the light bar is not replaceable. When the light source reaches its end of life the entire product should be replaced.

FCC WARNING
This device complies with part 15 of the FCC Rules. Operation is subject to the following two conditions: (1) this device may not cause harmful interference, and (2) this device must accept any interference received, including interference that may cause undesired operation.
Any changes or modifications not expressly approved by the party responsible for compliance could void the user's authority to operate the equipment.
NOTE: This equipment has been tested and found to comply with the limits for a Class B digital device, pursuant to Part 15 of the FCC Rules. These limits are designed to provide reasonable protection against harmful interference in a residential installation. This equipment generates, uses and can radiate radio frequency energy and, if not installed and used in accordance with the instructions, may cause harmful interference to radio communications. However, there is no guarantee that interference will not occur in a particular installation. If this equipment does cause harmful interference to radio or television reception, which can be determined by turning the equipment off and on, the user is encouraged to try to correct the interference by one or more of the following measures:
- Reorient or relocate the receiving antenna.
- Increase the separation between the equipment and receiver.
- Connect the equipment into an outlet on a circuit different from that to which the receiver is connected.
- Consult the dealer or an experienced radio/TV technician for help.
To maintain compliance with FCC's RF Exposure guidelines, this equipment should be installed and operated with minimum 20cm distance between the radiator and your body. Use only the supplied antenna.