

Temperature & Humidity Sensor



USER MANUAL V1
FOR T281/T282

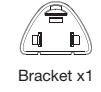
Products Contents



Sensor x1



Metal Hook x1



Bracket x1



Double-Sided Tape x1

Main Function

1. Waterproof IP67, anti-condensation for refrigerator and greenhouse.
2. Mini size but long battery life.
3. Export historical data as PDF or CSV files.
4. More than 2 years of data storage in App.
5. Prompt alert notification once the temperature or humidity exceeds the preset value range.
6. Various accessories for easy installation in different usage scenarios.

SPECIFICATIONS

| | |
|-----------------------|---|
| Battery | CR2450 3V 600mAh |
| Bluetooth | 5.0 2.4GHz |
| Bluetooth Range | 50m |
| Operating Temperature | -20°C ~85°C(-4°F ~185°F) |
| Operating Humidity | 0% ~95% (no condensation) |
| Temperature Accuracy | (0°C ~60°C /32°F ~140°F) +0.3°C /+0.5°F(typical) 0.5°C /+0.9°F(max) |
| Humidity Accuracy | ±2% (typical) ±5%(max) |

DOWNLOAD THE APP



SensorPro



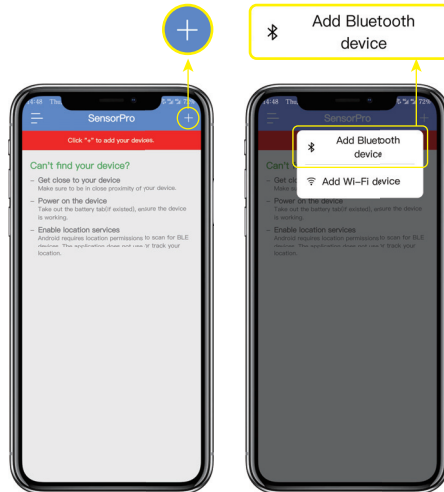
Download the SensorPro app from the App Store or Google Play by searching "SensorPro".

Note:

T281 is a Thermo-Hygrometer, which can monitor the temperature and humidity of the environment.
T282 is a thermometer that can only monitor the temperature of the environment.

ADD DEVICE

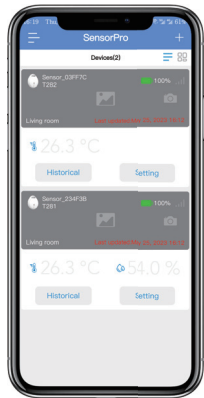
1. Take the device close to your phone.
2. Run "SensorPro" app on your smart phone.
3. Click "+" to add device to app.



Note: Enable Bluetooth before starting the pairing process.

Real-Time Data

After we added a device, SensorPro APP shows real-time data in the main screen.
SensorPro APP collects real-time temperature and humidity data by Bluetooth if the hygrometer is within the Bluetooth detection range.
The Bluetooth wireless range is about 50 meters in open area and maybe decreased in door.



Grey indicates the sensor doesn't receive the data.
Please check if the battery is dead or far away from the device.



Black and blue means real-time data Red means alert data

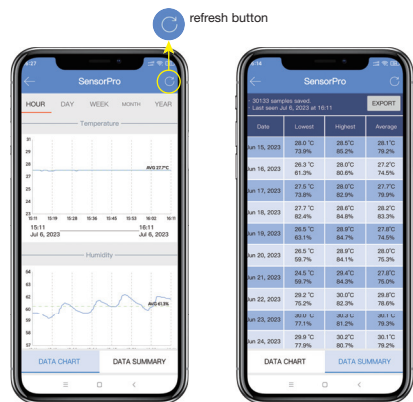
DEVICE SETTING

1. Click the setting button to set device parameters.
2. Click the camera icon to customize your scenes picture.
3. Click Remove device button to remove the device.



Chart Display

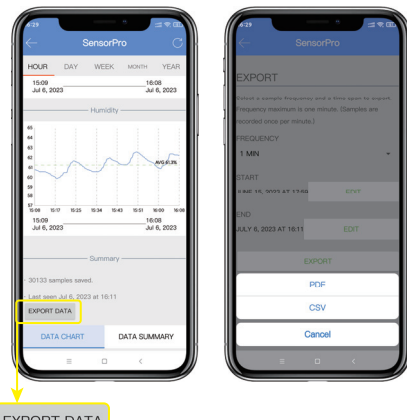
1. Click on the T281 and T282 of the historical button on the device item to display a historical data chart.
2. The App will automatically connect to the device to update data the first time you used.
3. Please click the refresh button to get the latest data when the data time is not the newest time.



Note: DATA SUMMARY shows the lowest, highest, and average data.

Export Data

The export button is located at the bottom of the chart. Click "EXPORT DATA", then select the "FREQUENCY" and historical data data you need. Click "EXPORT", then you can choose PDF or CSV file you need. Send PDF or CVS file to your email to check the historical data.

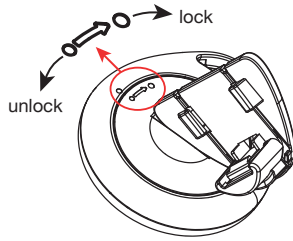


Installation



Various accessories for easy installation in different usage scenarios.

How to replace the battery?



Declaration

1. If we want to use Bluetooth in the Android system, we need to enable location permission, so our APP requests location permission. But our app does not record and use any information about your location.
2. We apply for camera permission and access to photo albums because the APP has the function of customizing scene pictures. If you don't plan to use this function, you can also turn it off.
3. We also applied for storage permission, because APP needs to store historical data. Without this permission, the APP cannot work properly.

FCC Regulations:

This device complies with part 15 of the FCC Rules. Operation is subject to the following two conditions:
(1) This device may not cause harmful interference.
(2) this device must accept any interference received, including interference that may cause undesired operation.

This device has been tested and found to comply with the limits for a Class B digital device, pursuant to Part 15 of the FCC Rules. These limits are designed to provide reasonable protection against harmful interference in a residential installation. This equipment generates, uses and can radiated radio frequency energy and, if not installed and used in accordance with the instructions, may cause harmful interference to radio communications. However, there is no guarantee that interference will not occur in a particular installation. If this equipment does cause harmful interference to radio or television reception, which can be determined by turning the equipment off and on, the user is encouraged to try to correct the interference by one or more of the following measures:
-Reorient or relocate the receiving antenna.
-Increase the separation between the equipment and receiver.
-Connect the equipment into an outlet on a circuit different from that to which the receiver is connected.
-Consult the dealer or an experienced radio/TV technician for help.

This equipment complies with FCC radiation exposure limits set forth for an uncontrolled environment. This equipment should be installed and operated with minimum distance 20cm between the radiator & your body.

Caution: Changes or modifications not expressly approved by the party responsible for compliance could void the user's authority to operate the equipment.