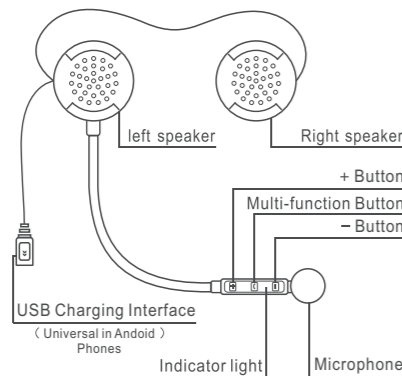




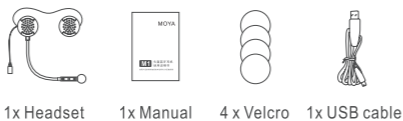
Product Introduction



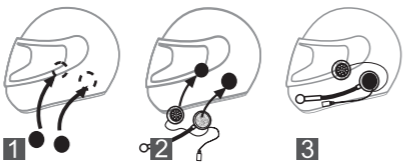
Function Introduction

1. Super sound quality. High volume.
2. Switchable Chinese and English voice prompt.
3. Support connection to two phones.
4. Connected to phone to realize automatic answering calls, rejecting calls, voice calls, music playing and other functions.
5. Function priority : Phone call > Music.

Packing List

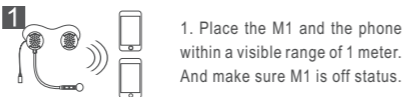


Installation Steps



1. Glue the Velcro loop side in the corresponding position of ear inside the helmet.
2. Fasten the headset inside the helmet via the hook side and loop side of Velcro.
3. Organize the earphone cables. Installation complete.

M1 Pairing and Connecting to Phone Steps



1. Place the M1 and the phone within a visible range of 1 meter. And make sure M1 is off status.



2. When M1 is off, press and hold the multi-function button for 6 seconds. The red and blue lights flash alternately, and there is a "Pairing" sound prompt.

Notes: Only when the red and blue lights flash alternately, it can be searched. The headset will automatically be turned off if there is no pairing device in 6 minutes.



3. Turn on the phone Bluetooth, search M1 and connect. The "connected" sound prompt means the connection is successful.

Notes: It can connect with two phones. When the headset is turned on, it will automatically connect to the latest connected phone. To connect to the second phone, you need to click the Bluetooth connection on the phone.

Button Operation Instructions



Mutil-function button

- **Turn on** (When the headset is off, press and hold it for 2 seconds. There is a "Power On" sound prompt , and the blue light will be on for 1 second.)
- **Turn off** (When the headset is on, press and hold it for 3 seconds. There is a "Power Off" sound prompt , and the red light will be on for 1 second.)

- **Pairing** (When the headset is off, press and hold it for 5 seconds. There is a "Pairing" sound prompt, and blue and red lights flash alternately.)

- **Answering a call** (When connected and there is a call, click it once or take no action in 10 seconds. The call will be put through automatically with a "Dong, Dong" sound prompt.)

- **Rejection of call** (If there is a call, press and hold it for 2 seconds. The call will be rejected with a "Dong, Dong" sound prompt.)

- **Phone call voice switch** (During a call, press and hold it for 2 seconds. There is a "Dong" sound prompt, and the red light flash every other second.)

- **End a call** (During the call, click it once and there is a "Dong" sound prompt.)

- **Voice dialing** (If you are not on a call, click it twice and there is a "Voice Dial" sound prompt.)

- **Music Play/Pause** (When connected, click it once.)

- **Switch between Chinese and English voice prompt** (In Pairing status and Bluetooth is not connected, click it twice and there is a "Dong, Dong, Dong, Dong" prompt.)



+ Button

- **Turn up the volume** (On a call or playing music, click it once. There is a "Di" sound prompt once reaching the maximum volume.)

- **Play the next** (When playing music, press and hold it for 2 seconds, it will advance to the next. Press and hold it for more than 3 seconds, it will cycle the next.)



- Button

- **Turn down the volume** (On a call or playing music, click it once. There is a "Di" sound prompt once reaching the minimum volume.)

- **Play the previous** (When playing music, press and hold it for 2 seconds, it will advance to the previous. Press and hold it for more than 3 seconds, it will cycle the previous.)



+ Button - Button

- **Clear the pairing device** (Press + and - keys at the same time in paired state. Prompt tone "dudu".)

Bluetooth status indication and prompt

- **Power on status** (If Bluetooth is connected, the blue indicator light flashes once every 6 seconds; if Bluetooth is not connected, the blue indicator light flashes two times every 6 seconds.)

- **Low power alarm** (The "Battery Low" sound is prompted every 60 seconds when the power is turned on, and the indicator light follows the current status and turns to red light flashing.)

- **Charging state** (Red light is on when charging. Red light is off when charging is completed.)

- **Battery status sound prompt when powered on** (If the battery is full, the "Battery Full" sound is prompted. If the battery is low, the "Low Battery Please Charge" sound is prompted.)

Specifications

Bluetooth version	5.0
Operating range	Up to 33 feet (>10 meters)
Standby time	Up to 400 hours
Operating time	Up to 10 hours
Charging time	Approximately 2.5 hours
Charging interface	Micro USB Android universal plug
Battery Type	Rechargeable Li-Polymer Batteries
Power Supply	5V \pm 0.5A
Operating Temperature	41°F ~ 104°F (5 ~ 40°C)
Storage temperature	-4°F ~ 122°F (-20 ~ 50°C)
Headset Weight	XXXX g

*Depending on the phone type and usage, the actual time may vary.

Specifications

- The appropriate storage temperature for this device is between -20°C and 50°C. Please do not store it in environment with too high or too low temperatures. Otherwise the service life will be affected.
- Please do not expose it to open fire, to avoid explosion.
- For a long period of time without being used, please keep the device in dry place and charge it regularly (once every 3 months), to ensure it work properly.

Warranty Service

Warranty service: 2 years

Change card to product warranty certificate, please keep it properly. Please attach a copy of the receipt on the warranty card to certify the purchase date.



Date of purchase: _____

Customer name: _____

Customer phone: _____

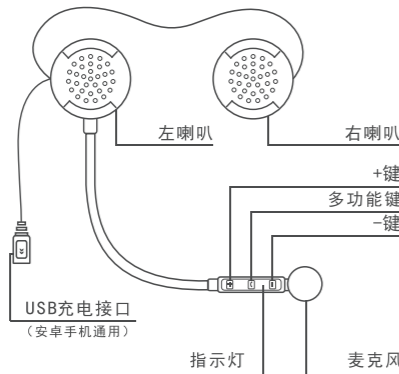
Customer address: _____

Please fill in the product failure description so that we can handle it for you in time.





产品介绍



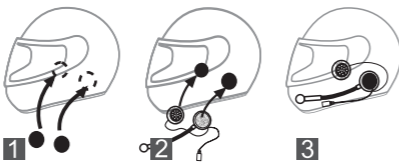
功能简介

1. 超强音质，大音量。
2. 中英文提示音切换。
3. 可以同时连接两台手机。
4. 可以连接手机实现自动接听、拒接电话、语音呼叫和播放音乐等功能。
5. 功能优先级：电话 > 音乐

包装清单



安装步骤

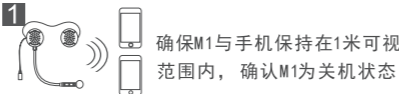


将魔术贴毛面粘在头盔内侧耳朵对应的位置。

通过魔术贴勾面与毛面将耳机固定在头盔内侧。

整理好耳机线，安装完成。

M1与手机配对连接步骤



2

M1关机时，长按多功能键6秒，红蓝灯交替闪烁，听到“配对状态”提示音。

注意：只有启动到红蓝灯闪烁时才能被搜索到，配对状态结束后如没设备5分钟后将自动关机。

3

打开手机蓝牙搜索M1并连接，听到“蓝牙已连接”提示音则连接成功。

注意：可以同时连接两台手机。开机后自动连接最后一台手机，另一台手机需要在手机上点击蓝牙连接。

按键操作说明



- **开机**（关机状态下按住2秒，直到听到“开机”，蓝灯长亮1秒。）
- **关机**（开机状态下按住3秒，直到听到“关机”，红灯长亮1秒继而熄灭。）
- **配对模式**（关机状态下长按5秒，直到听到“配对状态”，红蓝灯交替闪烁。）
- **接听电话**（连接状态下来电，按一下接听或来电后10秒无任何操作时自动接听，听到“咚咚”。

- **拒接电话**（来电时按住2秒，听到“咚咚”。）
- **电话语音切换**（通话时按住2秒，听到“咚”，红灯每隔1秒闪1次。）
- **终止通话**（通话时按一下，听到“咚”。）
- **语音呼叫**（无通话时双击，听到“语音呼叫”。）
- **音乐播放/暂停**（连接状态下按一下。）
- **中英文提示音切换**（配对模式和蓝牙未连接状态下双击，听到“咚咚咚咚”。）



- **增加音量**（通话和播放音乐状态短按一下，最大音量时有“嘀”提示音。）
- **下一曲**（播放音乐时，长按2秒切下一曲，按住3秒以上做循环下一曲操作。）



- **减小音量**（通话和播放音乐状态短按一下，最小音量时有“嘀”提示音。）
- **上一曲**（播放音乐时，长按2秒切上一曲，按住3秒以上做循环上一曲操作。）



- **恢复出厂设置**（配对状态下同时按住+键和-键3秒）

蓝牙状态指示和提示

- **开机状态**（蓝牙已连接，蓝灯每隔6秒闪1次；蓝牙未连接，蓝灯每隔6秒闪2次。）
- **低电报警**（开机状态听到“电池电量低”，每隔60秒提示一次，跟当前使用状态闪灯，指示灯转为红色。）
- **充电状态**（正在充电红灯长亮；充电完成红灯灭。）
- **开机时电量语音提示**（电量充足时听到“电量充足”，电量不足时听到“电量不足请充电”。）

规格

蓝牙版本	5.0
工作距离	>10米
待机时间	400小时
工作时间	10小时
充电时间	约2.5小时
充电接口	Micro USB安卓通用插头
电池类型	可充电锂聚合物电池
电源要求	5V = 0.5A
工作温度	41°F ~ 104°F (5 ~ 40°C)
储存温度	-4°F ~ 122°F (-20 ~ 50°C)
耳机重量	XXXX克

* 视手机类型和使用状态而定，实际时间可能有所不同。

注意事项

1. 本品适用的储存温度为-20°C到50°C，请勿在温度过高或过低的环境下存储，否则会影响产品使用寿命；
2. 请勿将本品暴露在明火之中，避免爆炸；
3. 如长时间不使用本产品，请将其存储在干燥的地方，并定期给产品充电（三个月充电一次），以保证产品能正常工作。

保修卡

保修期：2年
该卡为产品保修凭证，请妥善保管。
请在保修卡上贴上收据复印件，以证明购买日期。

购买日期：_____

客户名称：_____

客户电话：_____

客户地址：_____

产品故障描述 (请务必填写，以便我们及时为您处理)：



M1 头盔无线耳机 使用说明书

使用产品前请仔细阅读本说明书，并妥善保管

FCC ID: 2ATZP-MAXTO-M1

Changes or modifications not expressly approved by the party responsible for compliance could void the user's authority to operate the equipment.

This device complies with Part 15 of the FCC Rules. Operation is subject to the following two conditions: (1) this device may not cause harmful interference, and (2) this device must accept any interference received, including interference that may cause undesired operation.

This equipment has been tested and found to comply with the limits for a Class B digital device, pursuant to Part 15 of the FCC Rules. These limits are designed to provide reasonable protection against harmful interference in a residential installation. This equipment generates, uses and can radiate radio frequency energy and, if not installed and used in accordance with the instructions, may cause harmful interference to radio communications. However, there is no guarantee that interference will not occur in a particular installation.

If this equipment does cause harmful interference to radio or television reception, which can be determined by turning the equipment off and on, the user is encouraged to try to correct the interference by one or more of the following measures:

- Reorient or relocate the receiving antenna.
- Increase the separation between the equipment and receiver.
- Connect the equipment into an outlet on a circuit different from that to which the receiver is connected.
- Consult the dealer or an experienced radio/TV technician for help.

This device complies with FCC RF radiation exposure limits set forth for an uncontrolled environment. This transmitter must not be co-located or operating in conjunction with any other antenna or transmitter