

Smart Camera

Quick Start Guide

Copyright©2020 Ultimate IOT (Shanghai)
Technology Ltd.

All rights reserved.

<https://www.unisiot.com/en/web/>



Statement

Thank you for choosing UIOT, this user manual is intended for users of IP Camera(C0221100). It includes instructions on how to use the product. Before using the device, read the user manual carefully. Keep this manual for further clarifications. The descriptions, images and technical parameters may vary with the actual devices. The software embodied in the product is governed by the user license agreement covering that product.

Copyright

This Manual is subject to domestic and international copyright protection.

Ultimate IOT (Shanghai) Technology Ltd. ("UIOT") reserves all rights to this manual. This manual cannot be reproduced, changed, translated, or distributed, partially or wholly, by any means, without the prior written permission of UIOT.

Privacy Notice

Surveillance laws vary by jurisdiction. Check all relevant laws in your jurisdiction before using this product for surveillance purposes to ensure that your use of this product conforms. Please refer to the product specification for camera parameters and functions.



Disclaimer

This manual is for reference only. It may contain several technical incorrect places or printing errors, and the content is subject to change without notice. All information in this booklet has been thoroughly reviewed. Ultimate IOT (Shanghai) Technology Ltd. is not liable for damage caused by improper use of this device.

Regulatory Information

The products mentioned in this manual have passed FCC certification and IC certification.

2006/ 66/

Warnings Follow these safeguards to prevent serious injury or death.	Cautions Follow these precautions to prevent potential injury or material damage



Warnings

WARNING: Installation and servicing should be performed only by qualified and experienced technicians to conform to all local codes and to maintain your warranty.

WARNING: C0221100 product can only use 5VDC power supply, Do not connect to a higher voltage. Please use the power adapter provided in the product box. To prevent potential ground loop issues,

a separate PSU should be used for each camera. A multiple-output PSU may be used if the multiple output PSU has isolated and protected (2A max) outputs.



Cautions

CAUTION: The light emitted from the near-infrared light emitting diodes (LEDs) provides illumination over a wide area. This light is not considered a risk to the unshielded human eye. However, as with any light source, it is recommended that normal precautions be taken to avoid unnecessary exposure. For example, avoid staring into the beam or viewing the LEDs directly with optical instruments at close range.

Important Safety Instructions

- Read and keep these instructions.
- Ensure that your installation area can safely support 3 times the weight of the camera.
- Do not install the camera in extreme temperature conditions. Only use the camera where temperatures are within the limits shown in the camera specifications. Be especially careful to provide ventilation when operating under high temperatures.
- Do not install indoor rated cameras where they will be exposed to rain or moisture.
- To prevent damage to the imager, do not aim the camera toward an extreme light source.
- Do not touch the camera lens, dome or bezel (front glass plate).
- Do not drop the camera or subject it to physical shock.
- Do not use strong or abrasive cleaners, clean only with a soft cloth and mild detergent or alcohol.
- Do not open the camera or attempt to service it yourself. Refer all service issues to your dealer.



CHANGE THE DEFAULT PASSWORD

Default Account:

Username: admin Password: admin

*The default password <empty> for the **admin** account is for first-time log-in purposes only. You should change this default password to better protect against security risks, such as the unauthorized access by others to the product that may prevent the product from functioning properly and/or lead to other undesirable consequences.*

For your privacy, we strongly recommend changing the password to something of your own choosing (using a minimum of 8 characters, including upper case letters, lower case letters, numbers, and special characters) in order to increase the security of your product.

Proper configuration of all passwords and other security settings is the responsibility of the installer and/or end-user.

Product Features

This series of camera adopts a high-performance imaging sensor and advanced circuit board design technology. It features high resolution, low distortion, and low noise. It is ideal for surveillance systems and image processing systems.

Overview



Installation


Before you start:

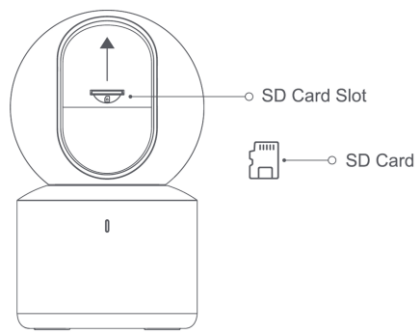
1. Please make sure that the camera is in good condition and all of the assembly parts are included.
2. Make sure that all related equipment is powered-off during the installation.
3. Check that the camera specification agrees with the installation environment.
4. To avoid damage, ensure the power supply voltage matches your camera requirements.
5. Please make sure the installation surface is strong enough to withstand three times the weight of the camera and the mounting.
6. If the installation surface is concrete, you need to insert expansion screws before you install the camera. If the installation surface is wood, you can use self-tapping screws to secure the camera.
7. If the product does not function properly, please contact your dealer or the nearest service center. Do not disassemble the camera for repair or maintenance by yourself.

Note: The pictures shown in this manual is for reference only, different models may vary its shape and structures. Please take actual product as standard.

Installation

Smart Camera C0221100

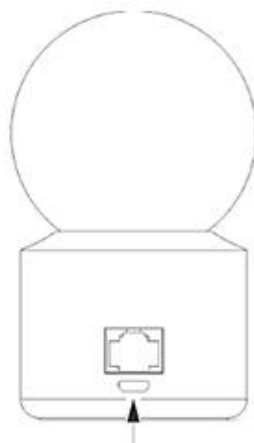
1. Tap on 'Privacy Cover'  when the camera is connected. The camera will tilt upward then insert the SD Card into the camera.



2. Open the camera mounting base using the tool provided in the package.

3. Use the screws to fix the mounting base to the ceiling.

4. Route the cables properly and connect the corresponding cables.



5. Align the bottom of the camera with the groove on the base, and then rotate and clamp the camera.

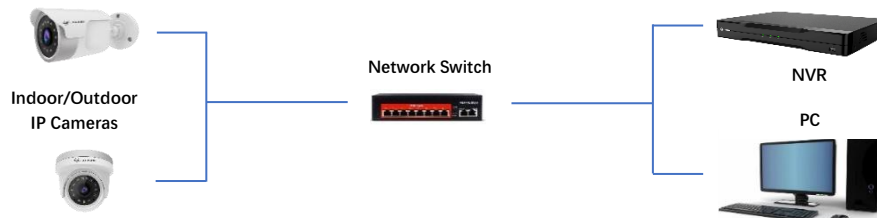
Network Configuration

The IP system of all the cameras is in DHCP when leaving the factory.

Access IP Camera over LAN

Network Connection

To view and configure the IP Camera via LAN, you need to connect the IP Camera in the same subnet with your local network, and install client software to search and access the IP Camera.



Note: The above connection diagram is for connecting Non-PoE Cameras. For PoE IP cameras, you can directly connect with PoE NVRs or connect to NVR via PoE Switches.

Access by Client Software

All the IP Cameras in the LAN will automatically detect and listed in NVR

Note:

- To access IP Camera in a LAN, you can choose any of the following methods.
- You can download JNVR Client software for PC from our official website:

JNVR

JNVR is a software tool to access and manage IP Camera in a LAN.

Note: JNVR Default Username: abc Password: 123

Steps

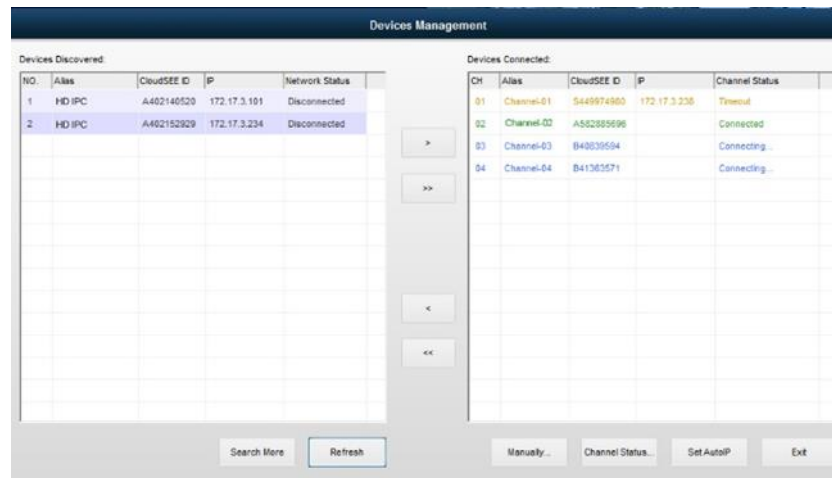
1. Install and run JNVR, the main view is as shown below



2. JNVR will search and connect IP Cameras automatically if there is no device added.



- Click Devices at the bottom, the Devices Management dialog box will appear. Device information including Device Name, ID, IP Address, Channel Status are listed.



	Add selected Device		Delete selected Device
	Add All Detected Devices		Delete All Added Device
	Research Device		Set IP for Camera Automatically

Note: JNVR will automatically connect the added device with default IP Camera account (Username: abc Password: 123). If you changed the password, the device will not connect and show “Wrong Password” in the Channel Status.

Double click the device name, and input correct Username and Password. Click OK. The camera will connect automatically. The added camera video streaming will display in the live view window.



Because of the fast update speed of software products, you can scan the QR code on the package, download the latest product manual and mobile application.

**FCC Statement:**

Any Changes or modifications not expressly approved by the party responsible for compliance could void the user's authority to operate the equipment.

This device complies with part 15 of the FCC Rules. Operation is subject to the following two conditions:

- (1) This device may not cause harmful interference, and
- (2) This device must accept any interference received, including interference that may cause undesired operation.

FCC Radiation Exposure Statement:

This equipment complies with FCC radiation exposure limits set forth for an uncontrolled environment. This equipment should be installed and operated with minimum distance 20cm between the radiator& your body.

ISED RSS Warning:

This device complies with Innovation, Science and Economic Development Canada licence-exempt RSS standard(s). Operation is subject to the following two conditions: (1) this device may not cause interference, and (2) this device must accept any interference, including interference that may cause undesired operation of the device.

Le présent appareil est conforme aux CNR d'ISED applicables aux appareils radio exempts de licence. L'exploitation est autorisée aux deux conditions suivantes:

- (1) l'appareil ne doit pas produire de brouillage, et
- (2) l'utilisateur de l'appareil doit accepter tout brouillage radioélectrique subi, même si le brouillage est susceptible d'en compromettre le fonctionnement.

ISED RF exposure statement:

This equipment complies with ISED radiation exposure limits set forth for an uncontrolled environment. This equipment should be installed and operated with minimum distance 20cm between the radiator& your body. This transmitter must not be co-located or operating in conjunction with any other antenna or transmitter.

Le rayonnement de la classe b respecte ISED fixaient un environnement non contrôlés. Installation et mise en œuvre de ce matériel devrait avec échangeur distance minimale entre 20 cm ton corps. Lanceurs ou ne peuvent pas coexister cette antenne ou capteurs avec d'autres.