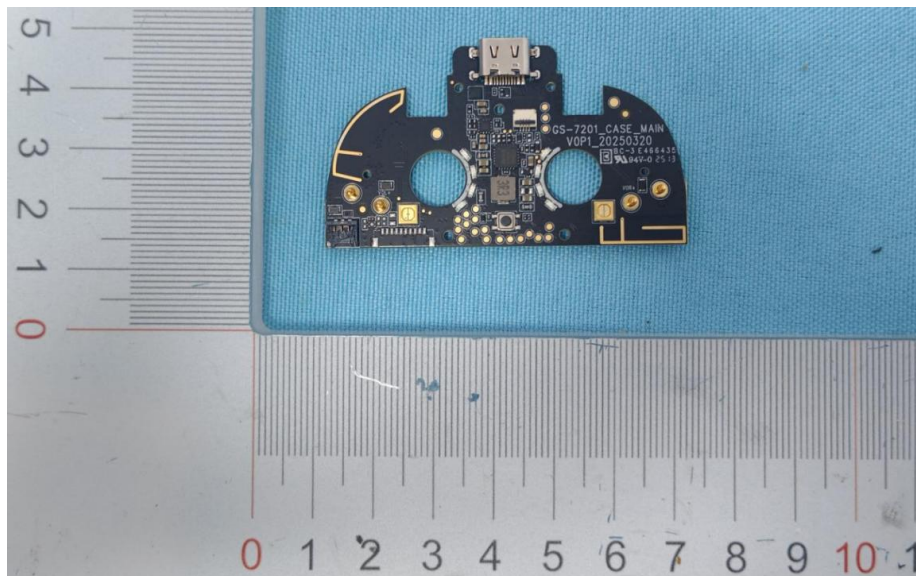




Clip charge case Antenna Spec



Part name: PCB IFA Antenna

Client: Cleer



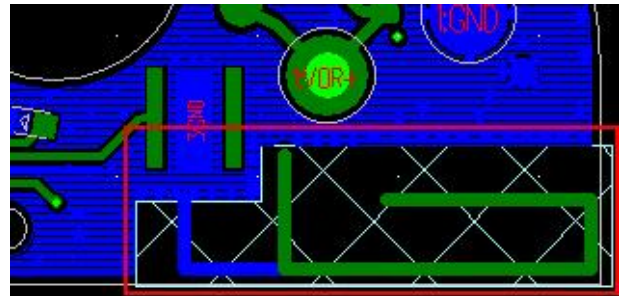
Design: Guixing wang

Date: 2025-04-28

Antenna Type	PCB IFA
Dimensions	L=15mm H=5mm
Central Frequency	2.45GHz
Bandwidth	100MHz (Min)
Return Loss	-10.7dB (Max)
Peak Gain	0.35dBi

1. Antenna Type

The antenna is printed on PCB by IFA , and works in 2.4GHz ISM band, central frequency at 2.45GHz.



2. Test Lab

Test lab: ETS Microwave Chamber with 23 measurement antennas in Grandsun Electronics OTA Lab.

AMS-8923 Basics

Regular Chamber Size: 16ft L x 16ft W x 16ft H
(4.9m x 4.9m x 4.9m)

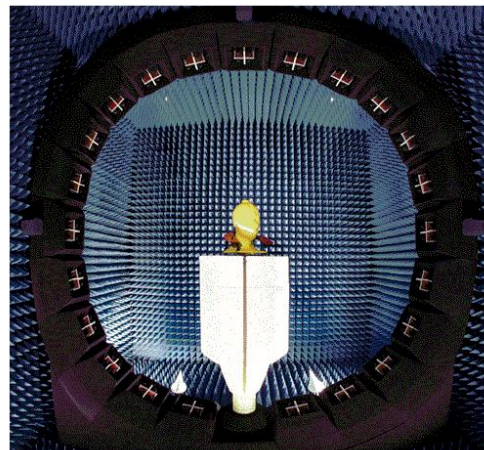
Test Distance: 1.95 meter

Frequency: 700MHz – 6GHz

Fully anechoic covered with EHP-12 absorbers

Quiet Zone Diameter:

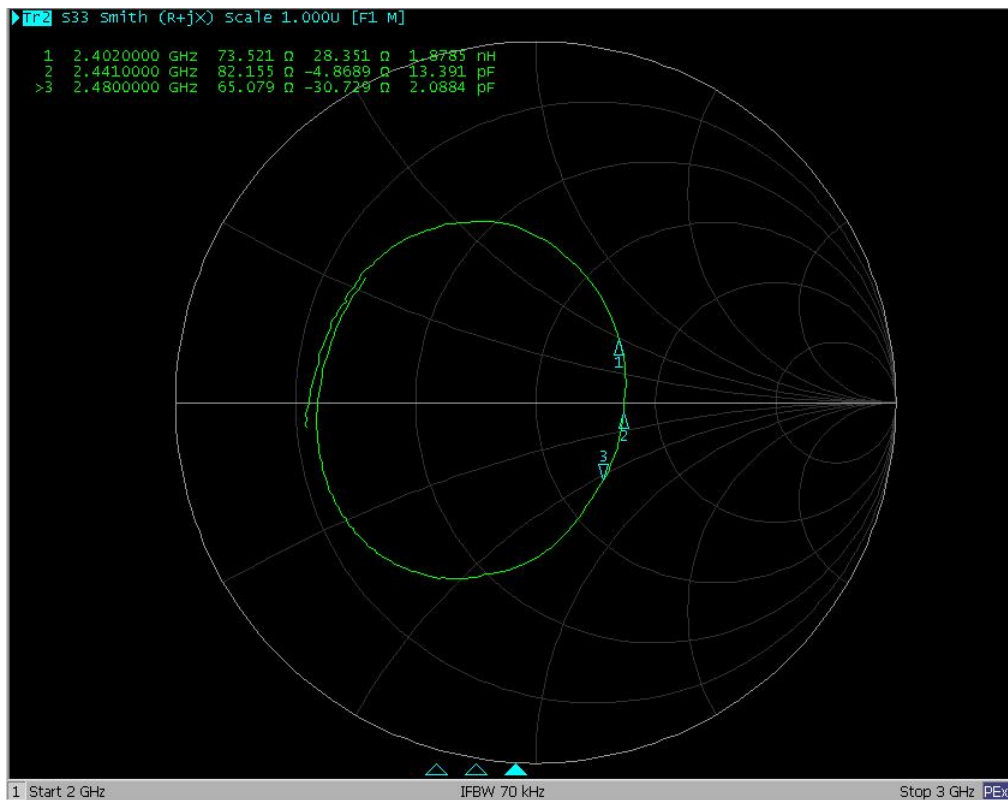
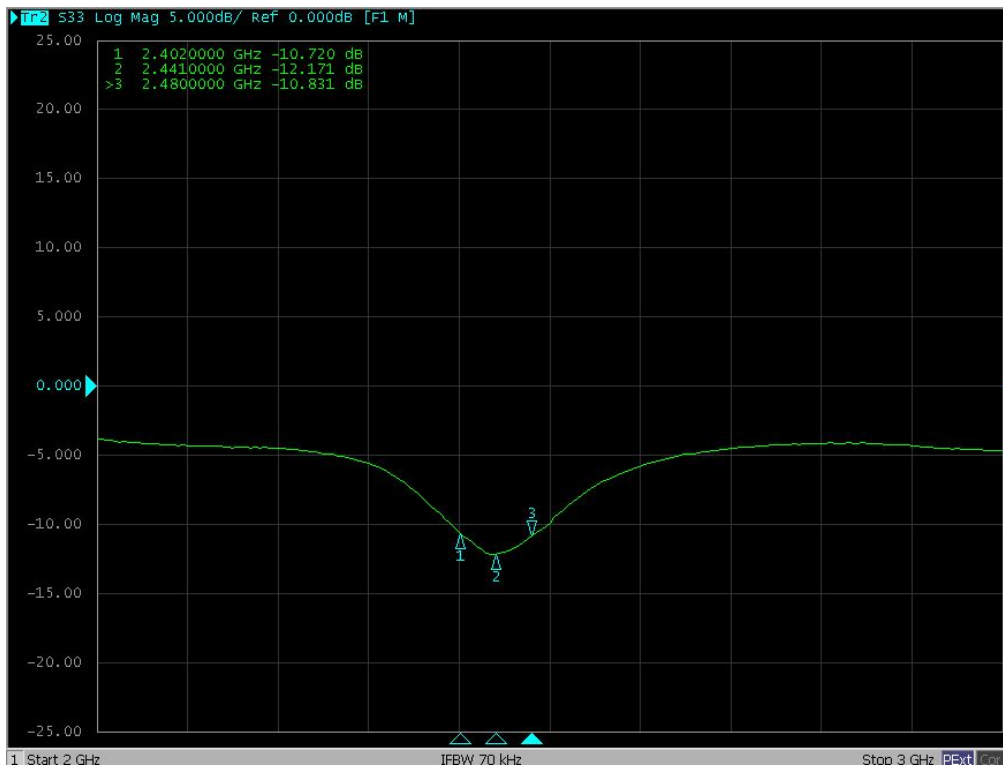
- 30cm
- 50cm
- per CTIA 3.2 versions



ETS-LINDGREN



3. Passive test -S11



4. Passive Efficiency and Gain



Frequency/MHz	2400	2410	2420	2430	2440	2450	2460	2470	2480	2490
Efficiency/%	23.34	24.59	25.44	26.06	28.10	30.02	31.17	32.32	31.78	31.34
Gain/dBi	-1.96	-1.54	-1.29	-1.19	-0.91	-0.33	0.01	0.35	0.30	0.40

【Remark】 2400-2480MHz Peak Gain 0.35dBi

5. Passive Test Graph

