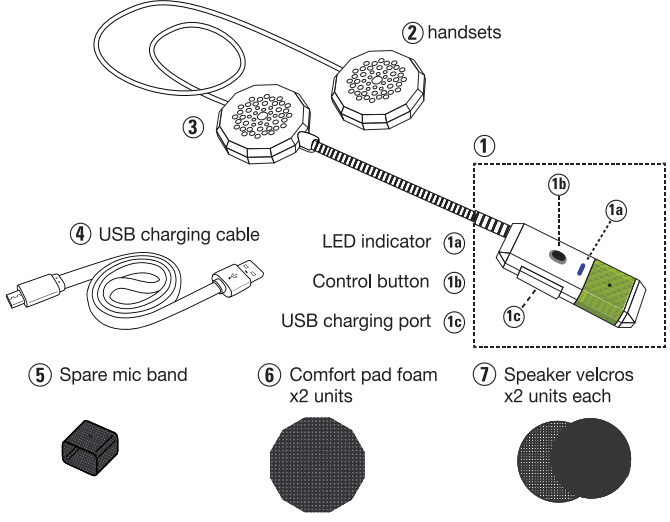


INSTRUCTION MANUAL



- HF1 / HF2:
- HF3:

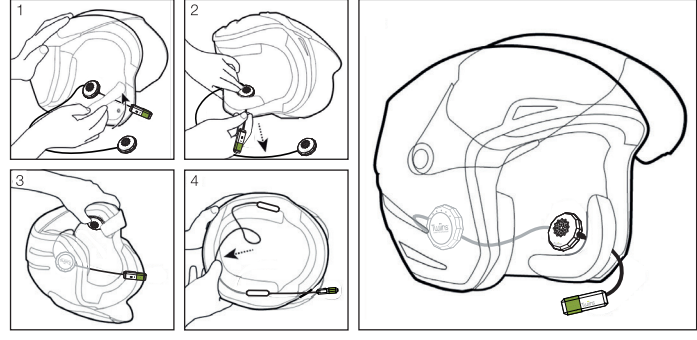
COMPONENTS



SETTING UP TWIIINS® HF DEVICE INSIDE YOUR HELMET

Helpful Hint #1: Activation will be easier if you wait to install your Twiiins® HF device into your helmet after all other steps have been completed.

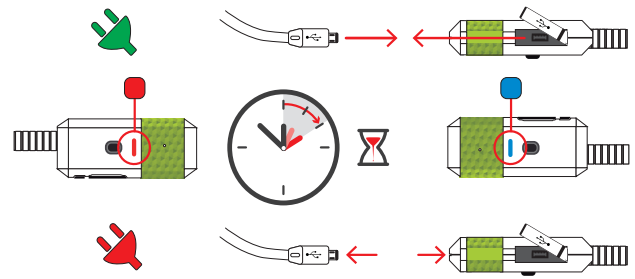
- Step 1: Setting Up in Your Helmet**
- Remove the side padding from the inside of your helmet (if it can be removed) and place the headsets at the height of your ears. The device is designed so that the main unit with the boom microphone is placed on the left side.
- Step 2: Using the Velcro Pads**
- The wire between headsets (2) and (3) must be stored inside the helmet, beneath the padding. In order to fix the headsets in place, two velcro pads are provided (male and female) with an adhesive backing (7). When using the velcro, stick the male part of the pad onto the device and the female part onto the inside of the helmet.
 - Depending on the internal configuration of your helmet, it may be necessary to use the entire velcro pad or only a portion of it. (see figure 2). In some cases, it may only be necessary to stick the male part onto the device as the inside of your helmet may already have padding that can serve as velcro (female). If needed, comfort pads (6) to place on the headsets are also provided, in order to improve comfort against your skin.
- Step 3: The Microphone**
- Place the microphone (1) on the front section of the helmet so it's both close to and oriented towards your mouth.



CHARGING AND TURNING ON AND OFF

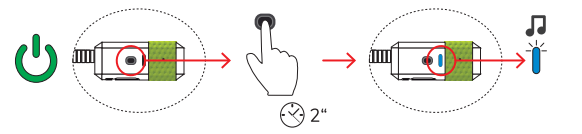
Step 1: Charge the Device Completely

Before using your Twiiins® HF device for the first time, you must charge the device completely. Connect the terminal (1c) to the provided USB charging cable (4) and then connect the cable to a USB charging port. While charging, the red LED light will switch on (1a), and it will change to blue once charging is completed.



Step 2: Switch the Product ON

Press and hold the button (1b) for two seconds, until the speakers produce an acoustic signal and the LED indicator (1a) begins to flash blue.



Step 3: Switch the Product OFF

Press and hold the control button (1b) for five seconds until the speakers produce an acoustic signal and the LED indicator (1a) begins flashing in red before the device powers off.



Note: Don't pull on the cable to disconnect it from the USB Port.

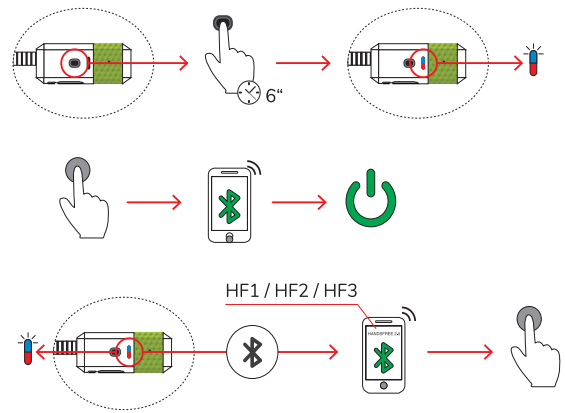
Note: As time goes by, batteries gradually lose their charge. This is why it's important to charge the battery fully before using the device and allow the battery to use almost all of its charge in between charging cycles.

Note: To ensure proper function, do not operate the Twiiins® HF device while charging.

WARNING: If you plan to store your Twiiins® device for a long period of time, be sure to recharge it, at least, once every six months, to ensure a perfect battery performance.

HOW TO PAIR YOUR TWIIINS® HF DEVICE WITH YOUR PHONE

- While the device is switched off, hold the control button (1b) for six seconds until the LED indicator (1a) begins flashing in red and blue. Your phone will find the device under the name HANDSFREE HF.
- Select the device and if necessary, enter the access code: 0000.



Note: Pairing is a process that only needs to be completed once. When the Twins® HF device is paired to a specific device, both devices will connect automatically when switched off and on.

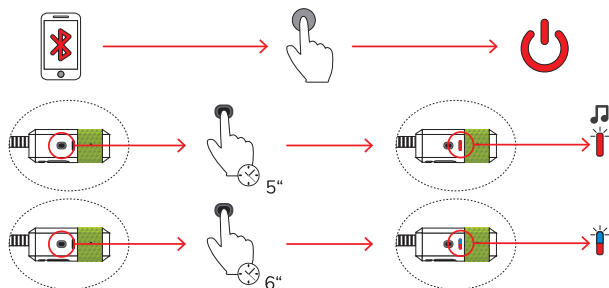
Note: Depending on your phone's Operating System software version, there is a possibility that during the phone's Bluetooth® device search you have to turn off your phone's Bluetooth® functionality and then turn it on again after two or three seconds, allowing the Twins® device to find it properly. This is normal and it should only happen during the first pairing with your phone.

HOW TO PAIR YOUR TWIINS® HF DEVICE WITH 2 PHONES (only available for HF1 and HF2 models)

Step 1: Pair your Twins® HF device to your phone#1, as explained in "How to Pair your Twins HF device with Your Phone".

Step 2: Turn off the Twins® HF device and the Bluetooth® signal of Phone#1

Step 3: While the device is switched off, hold the control button (1b) for six seconds until the LED indicator (1a) begins flashing in red and blue. Your Twins® HF device is now in searching mode, ready to be paired again.



Step 4: Turn on the Bluetooth® signal of Phone#2.

Step 5: Your Twins® HF device should now appear on the screen of your Phone #2 as a pairing option.

Select the Twins® device and in a few seconds the flashing LED will turn to a slow flashing blue light.

Your Phone#2 and the your Twins® device are paired!

Step 6: Turn on the Bluetooth® signal of Phone#1

Your Twins® Hands-Free device will be paired to both phones.



Note: when Twins® device is paired with other Twins® device in INTERCOM to PASSENGER mode, it can only be connected to one phone.

TAKING AND MAKING CALLS ON YOUR TWIINS® HF DEVICE

Step 1: Making a Call

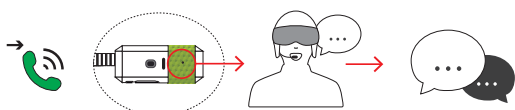
Option 1: Press the control button (1b) once. Your telephone's virtual assistant will be activated. Clearly state the action you want.

Option 2: Callback to the last dialed number: press the control button (1b) twice. This depends on the features and configurations of your mobile phone.

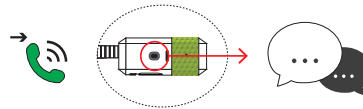
Step 2: Taking a Call

When there is an incoming call, the speaker will provide an acoustic signal.

Option 1: Answering through a voice command: answer the call by speaking any word out loud (eg "Answer!")

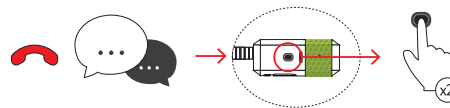


Option 2: Answering by pressing the control button (1b): press the control button (1b) only once.



Step 3: Rejecting a Call

Reject an incoming call: press the control button (1b) twice, as soon as you hear the acoustic signal for an incoming call.



USING NAVIGATION ON YOUR TWIINS® HF DEVICE

Mapping your ride

Option 1: Using an external navigation system, make sure your nav system has Bluetooth®. Pair with your system and follow nav guidance instructions.

Option 2: Use Bluetooth® to pair Twins® with your cell phone and receive nav guidance.

Note: Twins® HF devices only transmit the audio from your phone or external navigator. Twins does not have any navigation function.

ADJUSTING THE VOLUME ON YOUR TWIINS® HF DEVICE

The Twins® HF devices are pre-programmed with a volume level allowing for optimal listening at speeds of up to 50mph or 80mph depending on the Twins® model. To adjust the volume, use the volume controls on your cell phone or whatever device Twins® is connected to.

Note: Volume perception may vary depending on the position and separation of the speakers from your ear, as well as the type of helmet and motorcycle, external conditions and other factors.

LISTENING TO MUSIC ON YOUR TWIINS® HF DEVICE

Once the Twins HF device is paired to your mobile phone, activate music on the phone and it will immediately be heard through the Twins® device. Music and volume can only be controlled from the phone or emitting device, depending on its features and configuration.

Note: While you listen to music, all call features will remain active. In case you receive an incoming call, music will pause. When the call ends, playback will resume. Likewise, music will resume after making a call.

PLEASE NOTE

To use HF1 or HF2 or HF3 device in GROUPTALK mode, please disconnect the INTERCOM TO PASSENGER pairing.

To use the INTERCOM TO PASSENGER function, please make sure you have logged out from GROUPTALK / ZELLO APP, and closed the APP