



---

# Wireless Charger

User Manual



## GENERAL

Please read this document before using this product. Keep this document for future reference.

## SPECIFICATION

Input: DC 12V/1.5A  
Output: 5W; 7.5W; 10W (Max)  
Charging Efficiency: 75% (Max)  
Charging Distance: 8-16mm  
Frequency: 115-175kHz  
Support: All Qi Compatible Mobile  
Devices Size: 70.15mm x 7.25mm  
Operating Temperature: 0-35°C

## FCC STATEMENT

This device complies with part 15 of the FCC Rules. Operation is subject to the following two conditions:

- (1) This device may not cause harmful interference, and
- (2) This device must accept any interference received, including interference that may cause undesired operation.

Any Changes or modifications not expressly approved by the party responsible for compliance could void the user's authority to operate the equipment.

This equipment has been tested and found to comply with the limits for a Class B digital device, pursuant to part 15 of the FCC Rules. These limits are designed to provide reasonable protection against harmful interference in a residential installation.

This equipment generates uses and can radiate radio frequency energy and, if not installed and used in accordance with the instructions, may cause harmful interference to radio communications.

However, there is no guarantee that interference will not occur in a particular installation. If this equipment does cause harmful interference to radio or television reception, which can be determined by turning the equipment off and on, the user is encouraged to try to correct the interference by one or more of the following measures:

- Reorient or relocate the receiving antenna.
- Increase the separation between the equipment and receiver.
- Connect the equipment into an outlet on a circuit different from that to which the receiver is connected.
- Consult the dealer or an experienced radio/TV technician for help.

This equipment complies with FCC radiation exposure limits set forth for an uncontrolled environment. This equipment should be installed and operated with minimum distance 20cm between the radiator & your body when the function for Wireless charging in active. Users must follow the specific operating instructions for satisfying RF exposure compliance.

## IC CAUTION

The device meets the exemption from the routine evaluation limits in section 2.5 of RSS 102 and compliance with RSS-102 RF exposure, users can obtain Canadian information on RF exposure and compliance.

This device contains licence-exempt transmitter(s)/receiver(s) that comply with Innovation, Science and Economic Development Canada's licence-exempt RSS(s). Operation is subject to the following two conditions:

- (1) This device may not cause interference.
- (2) This device must accept any interference, including interference that may cause undesired operation of the device.

This equipment should be installed and operated with a minimum distance of 20 cm between the radiator and your body.

Le dispositif rencontre l'exemption des limites courantes d'évaluation dans la section 2.5 de RSS102 et la conformité à l'exposition de RSS-102 rf, utilisateurs peut obtenir l'information canadienne sur l'exposition et la conformité de rf.

L' émetteur/récepteur exempt de licence contenu dans le présent appareil est conforme aux CNRd' Innovation, Sciences et Développement économique

Canada applicables aux appareils radio exempts de licence. L' exploitation est autorisée aux deux conditions suivantes:

- (1) L' appareil ne doit pas produire de brouillage;
- (2) L' appareil doit accepter tout brouillage radioélectrique subi, même si le brouillage est susceptible d' en compromettre le fonctionnement.

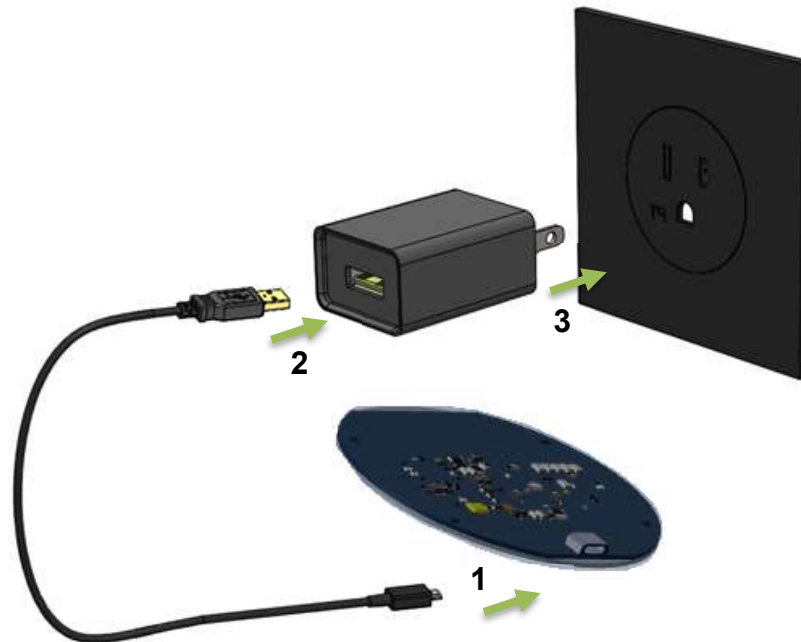
Cet équipement doit être installé et utilisé à une distance minimale de 20 cm entre le radiateur et votre corps.

## ATTENTION OF HOST MANUFACTURER

The host manufacturer must make a C2PC to use this limited module and print "Contains FCC ID: 2ATO9-19100; IC: 27851-1910010W on the host label (the module is not shielded, so it needs to retest the RSE with the host), and the host needs to meet FCC Part 15, Subpart B and RSS standard."

Le fabricant de l'hôte doit créer un C2PC pour utiliser ce module limité et imprimer "Contient l'ID FCC: 2ATO9-19100; IC: 278521-1910010W sur l'étiquette de l'hôte (le module n'est pas blindé, il doit donc retester le RSE avec l'hôte), et l'hôte doit être conforme à la partie 15 de la FCC, sous-partie B et à la norme RSS."

## CONNECTION



1. Connect Micro-USB plug to Micro-USB port on wireless charging unit
2. Connect USB Type-A plug to USB Type-A port on QC 2.0 / QC 3.0 adapter
3. Connect QC 2.0 / QC 3.0 adapter to an appropriate wall outlet

Indicator	Solid RED LED: Normal charging
	Solid GREEN LED: Charging completed
	Blinking RED LED: Foreign object detected

## NOTES

1. To avoid short circuit, do not disassemble, throw into fire or water, or crush
2. For indoor use only
3. Do not use in corrosive environment, extreme humidity, and exceeding operating temperature
4. To avoid unwanted interference, keep at least 20cm between implantable medical devices (pacemakers, cochlear, etc.) and wireless charger
5. This is not a toy, do not give to children