

 Nakamichi®
User Manual



CUBEBOX BLUETOOTH SPEAKER

SAFETY WARNINGS

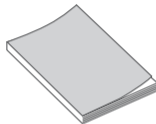
- Thank you for purchasing our product. Please read through this manual before connecting this product to your devices.
- Do also retain this manual for future reference.
Register your warranty on www.nakamichihomeaudio.com
- For the first use, a full charge is recommended.
- Please use and store the product at room temperature.
- Do not use near any heat sources such as radiators, heat registers, stoves, or other apparatus (including amplifiers) that produce heat.
- Do not allow small particles to get into the product.
- Do not throw or drop the product to avoid any damage
- Please charge the speaker with the correct voltage at all times.
- Please moderate the speaker volume to avoid any temporary or permanent hearing impairment.
- Do not disassemble the product, there are no user serviceable parts inside. Do not make any modifications to the product.
- Keep the product out of children's reach.
- Do not attempt to replace the battery on your own, please refer to the authorized dealer for any battery replacement.
- Do not expose battery pack to such conditions such as direct sunlight, fire or any similar conditions.

WHAT'S IN THE BOX?

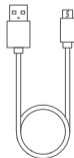
CUBEBOX Bluetooth Speaker x 1pc



User Manual x 1pc



Detachable Strap
x1pc

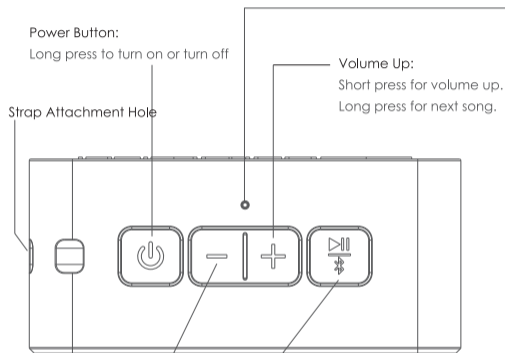


Type C Charging Cable
x1pc

3.5mm Audio Cable
x1pc



FUNCTIONS - KEYS



Power Button:

Long press to turn on or turn off

Strap Attachment Hole

Volume Up:

Short press for volume up.

Long press for next song.

Volume Down:

Short press for volume down.

Long press for previous song.

Play & Pause / Bluetooth Key:

During Bluetooth Mode: Short press to play and pause music.

Long press to disconnect from the current connected device, and short press to reconnect to the previous device.

During AUX Mode: Short press to mute speaker.

LED Indicator:

Waiting to be connected:

Blue LED light flashes quickly.

Bluetooth pairing success:

Blue LED light flashes slowly.

Pause under bluetooth mode:

Blue LED light flashes slowly.

AUX mode playback: Blue LED light is always on, slow flashes in a mute state.

Bluetooth mode playback: Blue LED light stays on.

Maximum volume:

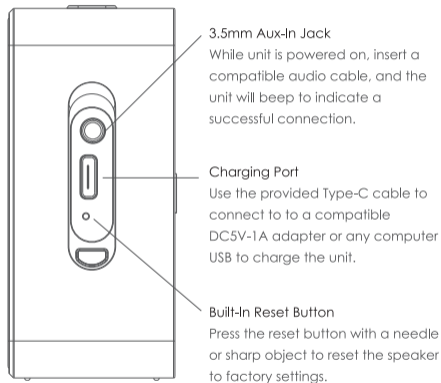
Blue LED light quick flashes with a beep.

Minimum volume: Blue LED flashes quickly

Standby bluetooth disconnected: Automatically shut down after 10 minutes without operation.

Battery charging status: Red LED light stays on while charging. When fully charged, the red LED light turns off.

FUNCTIONS - PORTS



FUNCTIONS - PORTS

1. Turning On The Speaker

Press and hold the power button to turn the speaker on. Once turned on the speaker will emit a tone, and once the blue LED light flashes, the speaker is ready to be connected.

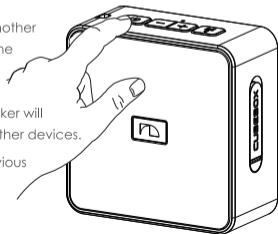
2. Pairing a Bluetooth Device

Activate the bluetooth on your device, and search for CUBEBOX. Once the bluetooth connection is complete, the speaker will emit a beep and the blue LED light will stay on. The speaker will automatically reconnect to the last paired device the next time the speaker is turned on.

Other Instructions

To pair the speaker to another device, press and hold the bluetooth button to disconnect from the current device, the speaker will then be detectable to other devices.

To reconnect to the previous device, press the button briefly to reconnect.

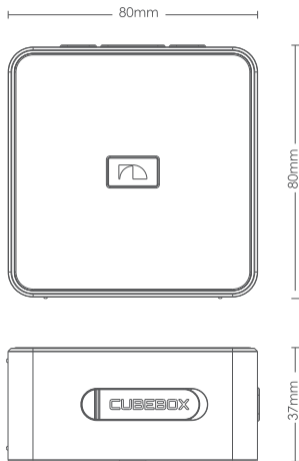


SPECIFICATIONS

Basic Parameters	
Speaker Type	IPX7 Bluetooth Speaker
Power Supply	Built in 1000mAh lithium battery
	DC5V-1A USB / Full charge in 2.5 hours
Playtime	6 hours at 50% volume
Volume Control	Short press to adjust speaker volume
Product Dimensions	80×80×37 mm
Product Weight	211g (including built-in lithium battery)

Technical Parameters	
Loudspeaker	Φ40mm external magnetic speakers + low frequency radiator
Output Power	5W THD=10%
Frequency Response	80HZ-12KHZ
Bluetooth Version	Bluetooth 5.0
USB Version	Type C (no data transmission function)
Bluetooth Range	10 meters

DIMENSIONS (UNIT: mm)



TROUBLESHOOTING

If you are experience problems with this product, please check the below troubleshooting tips. Otherwise please contact your nearest dealer or service centre.

FAQ	Solutions
Unable to connect to the speaker	1. Restart the speaker and try again.
	2. If your device requires a pin code, please use 0000.
Music cuts out intermittently during playback	Please ensure the speaker is within the operating range and there is nothing in between the speaker and the device.
No sound during playback	1. Please adjust the volume of the speaker.
	2. Please adjust the volume of your device.
	3. Please check if the speaker if paused.
Speaker does not turn on	Please charge the speaker for about 2 hours and try turning it on again.
Speaker does not respond to any operation	Please reset the speaker by pressing the reset button with a sharp object.

CONNECT WITH US

 nakamichihomeaudio.com

 [nakamichi.global](https://facebook.com/nakamichi.global)

 [nakamichihomeaudio](https://instagram.com/nakamichihomeaudio)

FCC Statement

This equipment has been tested and found to comply with the limits for a Class B digital device, pursuant to part 15 of the FCC rules. These limits are designed to provide reasonable protection against harmful interference in a residential installation. This equipment generates, uses and can radiate radio frequency energy and, if not installed and used in accordance with the instructions, may cause harmful interference to radio communications. However, there is no guarantee that interference will not occur in a particular installation. If this equipment does cause harmful interference to radio or television reception, which can be determined by turning the equipment off and on, the user is encouraged to try to correct the interference by one or more of the following measures:

- Reorient or relocate the receiving antenna.
- Increase the separation between the equipment and receiver.
- Connect the equipment into an outlet on a circuit different from that to which the receiver is connected.
- Consult the dealer or an experienced radio/TV technician for help.

To assure continued compliance, any changes or modifications not expressly approved by the party.

Responsible for compliance could void the user's authority to operate this equipment. (Example- use only shielded interface cables when connecting to computer or peripheral devices).

This equipment complies with Part 15 of the FCC Rules. Operation is subject to the following two conditions:

- (1) This device may not cause harmful interference, and
- (2) This device must accept any interference received, including interference that may cause undesired operation.

FCC Radiation Exposure Statement:

The equipment complies with FCC Radiation exposure limits set forth for uncontrolled environment. This equipment should be installed and operated with minimum distance 20cm between the radiator and your body.

Any Changes or modifications not expressly approved by the party responsible for compliance could void the user's authority to operate the equipment.