

WARNING

WARNING: TO REDUCE THE RISK OF FIRE OR SHOCK, DO NOT EXPOSE THIS PRODUCT TO RAIN OR MOISTURE



CAUTION: TO REDUCE THE RISK OF FIRE OR SHOCK, DO NOT REMOVE COVER OR BACK. NO USER-SERVICEABLE PARTS INSIDE. REFER SERVICING TO QUALIFIED PERSONNEL



The exclamation mark inside an equilateral triangle is intended to alert user of the presence of the important operating and maintenance (servicing) instructions in the literature accompanying the product.



The lightning flash with arrowhead symbol inside an equilateral triangle is intended to alert User of the presence of un-insulated "hazardous voltage" within the product's enclosure, which may be of sufficient magnitude to induce a risk of electric shock to persons

NOTES:

Please do not attempt to open the back cover or power adapter as opening or removing the covers may expose you to dangerous voltage or other hazards, and it will also cause the restricted servicing to be disabled. There are no user servicing components inside.

IMPORTANT SAFETY INSTRUCTIONS

1. Read these instructions.
2. Keep these instructions. Heed all warnings.
3. Follow all instructions.
4. Do not use this apparatus near water.
5. Clean only with dry cloth.
6. Do not block any ventilation openings.
7. Install in accordance with the manufacturer's instructions.
8. Do not install near any heat sources such as radiators, heat registers, stoves, or other apparatus (including amplifiers) that produce heat.
9. Do not defeat the safety of the polarized or the polarized or grounding-type plug. A polarized plug has two blades with one wider than the other. A grounding type plug has two blades and a third grounding prong. The wide blade or the third prong are provided for your safety. If the provided plug does not fit into your outlet, consult an electrician for replacement of the obsolete outlet.
10. Protect the power cord from being walked on or pinched particularly at plugs, convenience receptacles, and the point where they exit from the apparatus.
11. Only use attachments/accessories specified by the manufacturer.
12. Use only with the cart, stand, tripod, bracket, or table specified by the manufacture, or sold with the apparatus. When a cart is used, use caution when moving the cart/apparatus combination to avoid injury from tip-over. Portable Cart Warning
13. Unplug this apparatus during lightning storms or when unused for long periods of time.
14. Refer all servicing to qualified service personnel. Servicing is required when the apparatus has been damaged in any way such as power-supply cord or plug is damaged, liquid has been spilled or objects have fallen into the apparatus, the apparatus has been exposed to rain or moisture does not operate normally, or has been dropped.
15. The apparatus shall not be exposed to dripping or splashing and no objects filled with liquids, such as vases, shall be placed on the apparatus.
16. The battery shall not be exposed to excessive heat such as sunshine, fire or the like.
17. The MAINS plugs used as the disconnect device, which shall remain readily operable.



2x12" Rechargeable Speaker STAGE-212

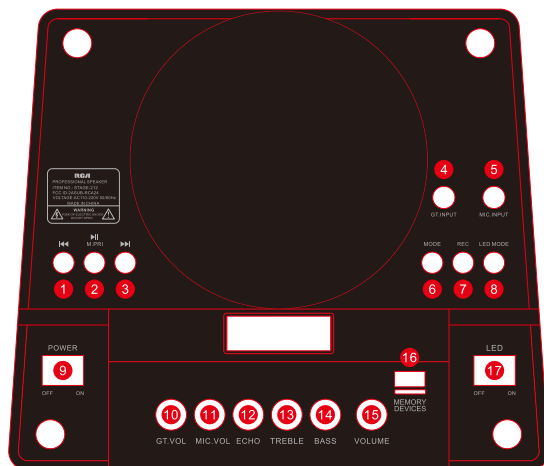


This product has been manufactured and sold under the responsibility of Top Tech Audio Inc. RCA, the RCA logo and the two dogs(Nipper and Chipper) logo are trademarks used under license by Top Tech Audio Inc.- further information at www.rca-brand.com.

All other products, services, companies, trademarks, trade or product names and logos referenced herein are the property of their respective owners.

Respectable users: Thank you for your support and trust on the products of our company. To fully exert the function of the product, we suggest you to read the operating instruction carefully before using it to avoid any unnecessary loss. If anything unclear, please contact the distributors directly.

1-CONTROL PANEL FUNCTIONS

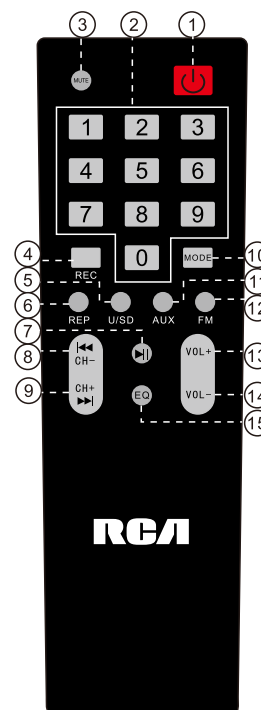


- | | |
|--|---|
| <p>1. PREV:
Previous track/Previous station</p> <p>2. Pause/Play
M.PRI:
Long press for microphone priority</p> <p>3. NEXT:
Next track/Next station</p> <p>4. GT.INPUT: Guitar input jack</p> <p>5. MIC.INPUT: Microphone input jack</p> <p>6. MODE:
Different mode transformation</p> <p>7. REC: Recording</p> | <p>8. LED MODE:
Different LED mode transformation</p> <p>9. POWER: Power on/off</p> <p>10. GT.VOL: Guitar volume</p> <p>11. MIC.VOL: Microphone volume</p> <p>12. ECHO</p> <p>13. TREBLE</p> <p>14. BASS</p> <p>15. VOLUME: Master volume</p> <p>16. MEMORY DEVICES:
Slot A&Slot B</p> <p>17. LED: LED power on/off</p> |
|--|---|

2-CHARGING THE SPEAKER

- 1-Full recharge takes 8-12 hours
 - 2-Please use the supplied charging cable to charge the speaker .
 - 3-When you are using your unit while it is plugged to an external power source, be sure the battery switch is ON.
 - 4-To protect the lifespan of the built-in battery, be sure to fully charge your unit on the same day the battery runs out.
- Not charging your unit right away can affect the performance of the battery.

3-REMOTE CONTROL FUNCTIONS



1. **Power On/Off:** Turns the Power On/Off
2. **Number:** Number keypad selection
3. **MUTE:** Press to mute the Volume
4. **REC:** Recording
5. **U/SD:** signal input
6. **REP:** Press to repeat and/or shuffle
7. **▶▶** Press to Play or Pause
8. **◀◀** Previous track
9. **▶▶** Next track
10. **MODE:** Switch the Media Input Mode
11. **AUX:** Aux signal input
12. **FM:** FM signal input
13. **VOL+:** Volume up
14. **VOL-:** Volume down
15. **EQ:** Choose preset Equalizer

4-WIRED MICROPHONE INSTRUCTIONS

- 1-Insert the microphone plug into the microphone input jack.
- 2-Adjust the microphone volume knob MIC VOL for proper volume.
- 3-Adjust the echo depth to the proper position.
- 4-Now you can start using your microphone.

5-WIRELESS CONNECTION

You can connect your compatible wireless devices such as a cellphone, computer etc., to listen to your audio tracks from this speaker.

Press the MODE button on the speaker, or press the MODE button on the remote control to enter wireless mode, indicated on the LED display.

Using the native controls on your device, select “ STAGE-212 ” in your settings to pair, and once successful, you will hear a sound of notice on the speaker.

6-LED LIGHTS

To activate it, position the switch “LED” power to ON. The LED on the top and front will begin to light up, randomly changing colors or lighting up all at once.

FCC Warning:

This equipment has been tested and found to comply with the limits for a Class B digital device, pursuant to part 15 of the FCC Rules. These limits are designed to provide reasonable protection against harmful interference in a residential installation. This equipment generates, uses and can radiate radio frequency energy and, if not installed and used in accordance with the instructions, may cause harmful interference to radio communications. However, there is no guarantee that interference will not occur in a particular installation. If this equipment does cause harmful interference to radio or television reception, which can be determined by turning the equipment off and on, the user is encouraged to try to correct the interference by one or more of the following measures:

- Reorient or relocate the receiving antenna.
- Increase the separation between the equipment and receiver.
- Connect the equipment into an outlet on a circuit different from that to which the receiver is connected.
- Consult the dealer or an experienced radio/TV technician for help.

Caution: Any changes or modifications to this device not explicitly approved by manufacturer could void your authority to operate this equipment.

This device complies with part 15 of the FCC Rules. Operation is subject to the following two conditions:

(1) This device may not cause harmful interference, and (2) this device must accept any interference received, including interference that may cause undesired operation.

This equipment complies with FCC radiation exposure limits set forth for an uncontrolled environment. This equipment should be installed and operated with minimum distance 0cm between the radiator and your body.