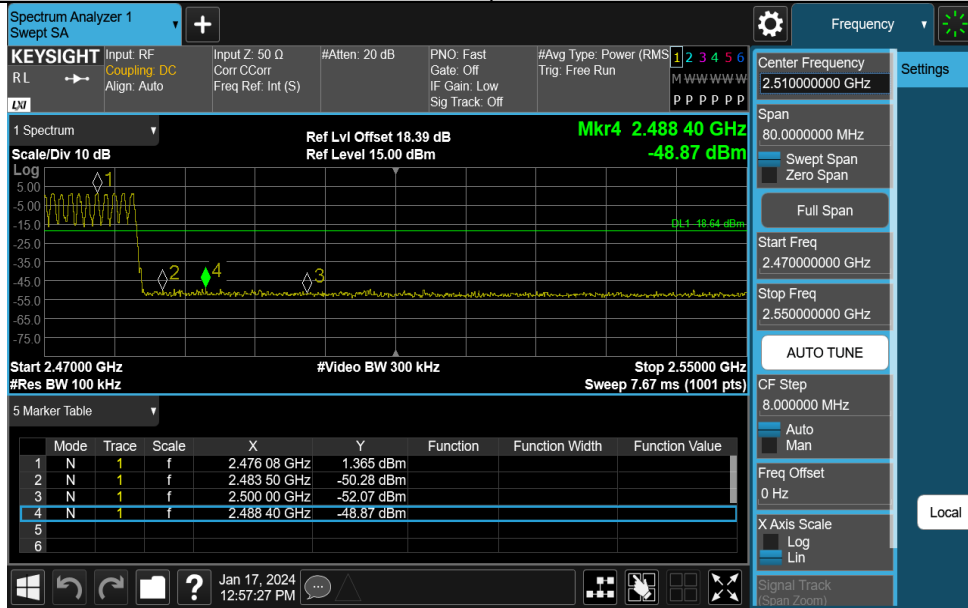


Appendix F: Band edge measurements Test Result

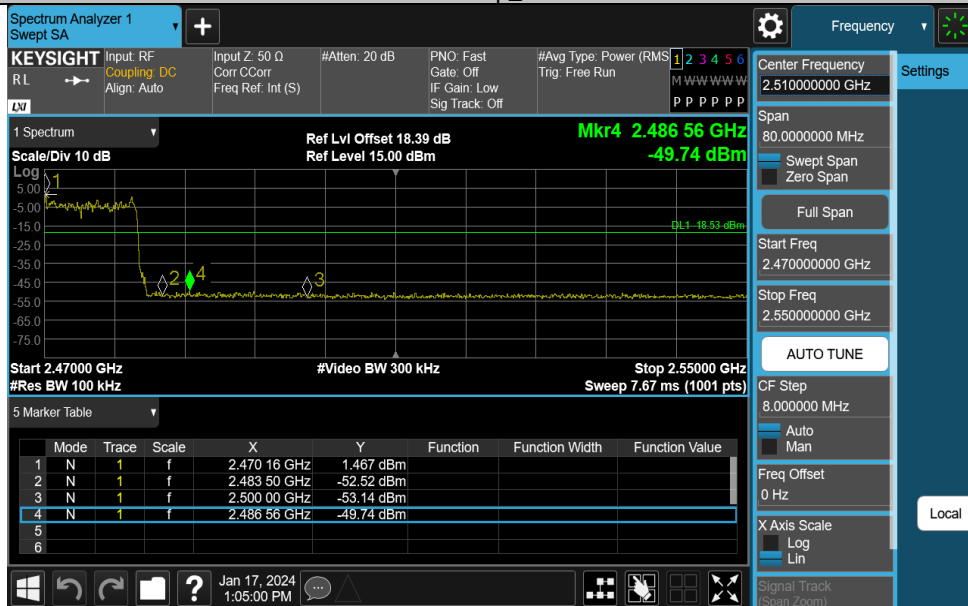
TestMode	Antenna	ChName	Frequency[MHz]	RefLevel [dBm]	Result [dBm]	Limit [dBm]	Verdict
DH5	Ant1	High	Hop_2480	1.37	-48.87	≤-18.64	PASS
2DH5	Ant1	High	Hop_2480	1.47	-49.74	≤-18.53	PASS
DH5	Ant1	Low	Hop_2402	0.90	-49.22	≤-19.1	PASS
2DH5	Ant1	Low	Hop_2402	-2.48	-48.96	≤-22.48	PASS
DH5	Ant1	High	2480	1.64	-50.43	≤-18.36	PASS
2DH5	Ant1	High	2480	-0.27	-48.58	≤-20.27	PASS
DH5	Ant1	Low	2402	1.31	-49.35	≤-18.69	PASS
2DH5	Ant1	Low	2402	1.39	-48.14	≤-18.61	PASS

Test Graphs

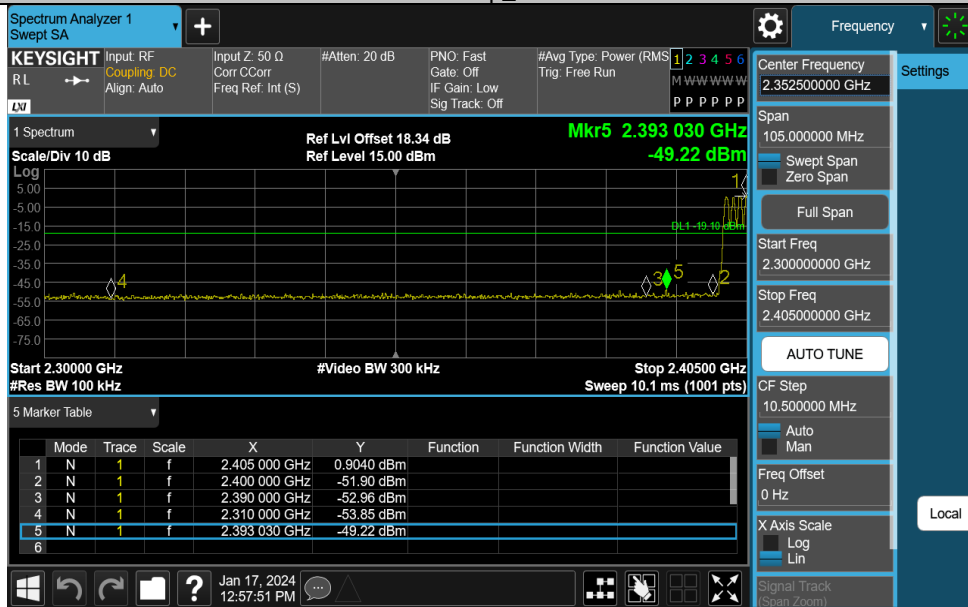
DH5-Ant1-Hop_2480-PASS



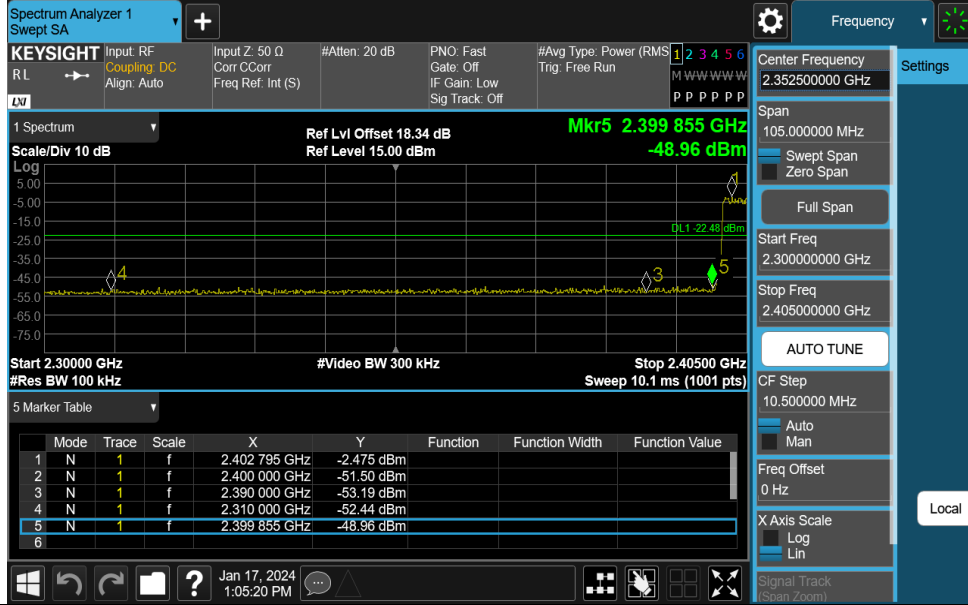
2DH5-Ant1-Hop_2480-PASS



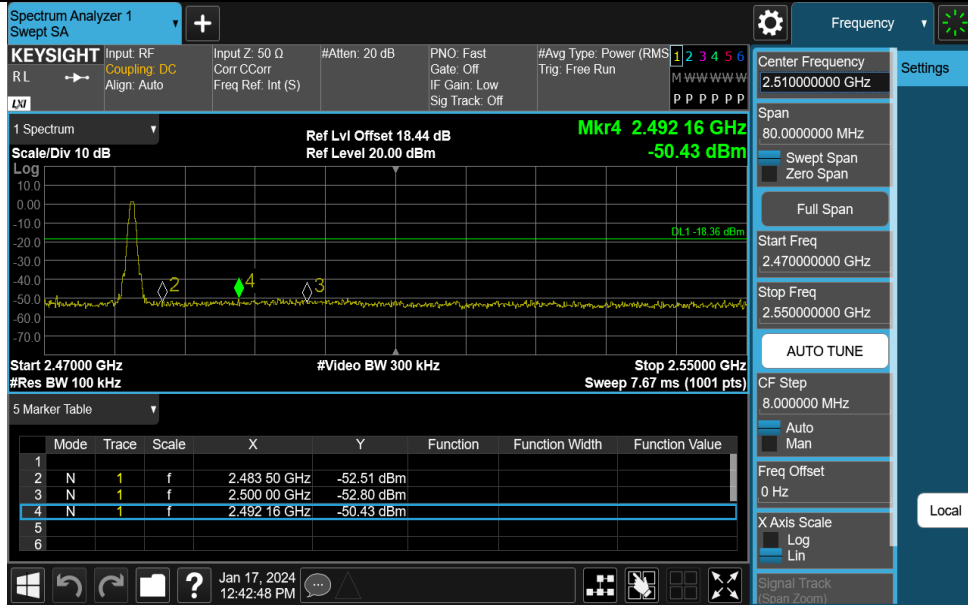
DH5-Ant1-Hop_2402-PASS



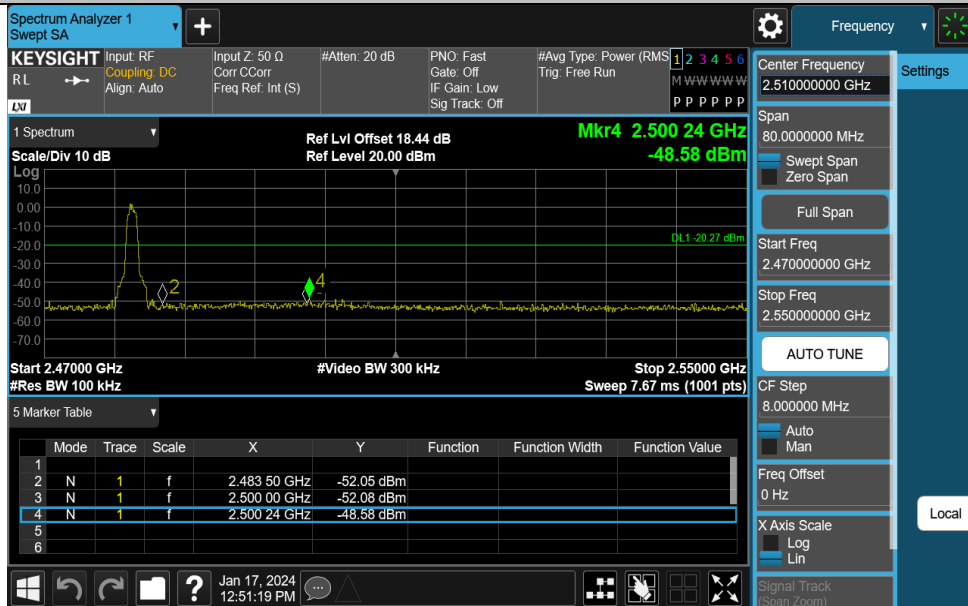
2DH5-Ant1-Hop_2402-PASS



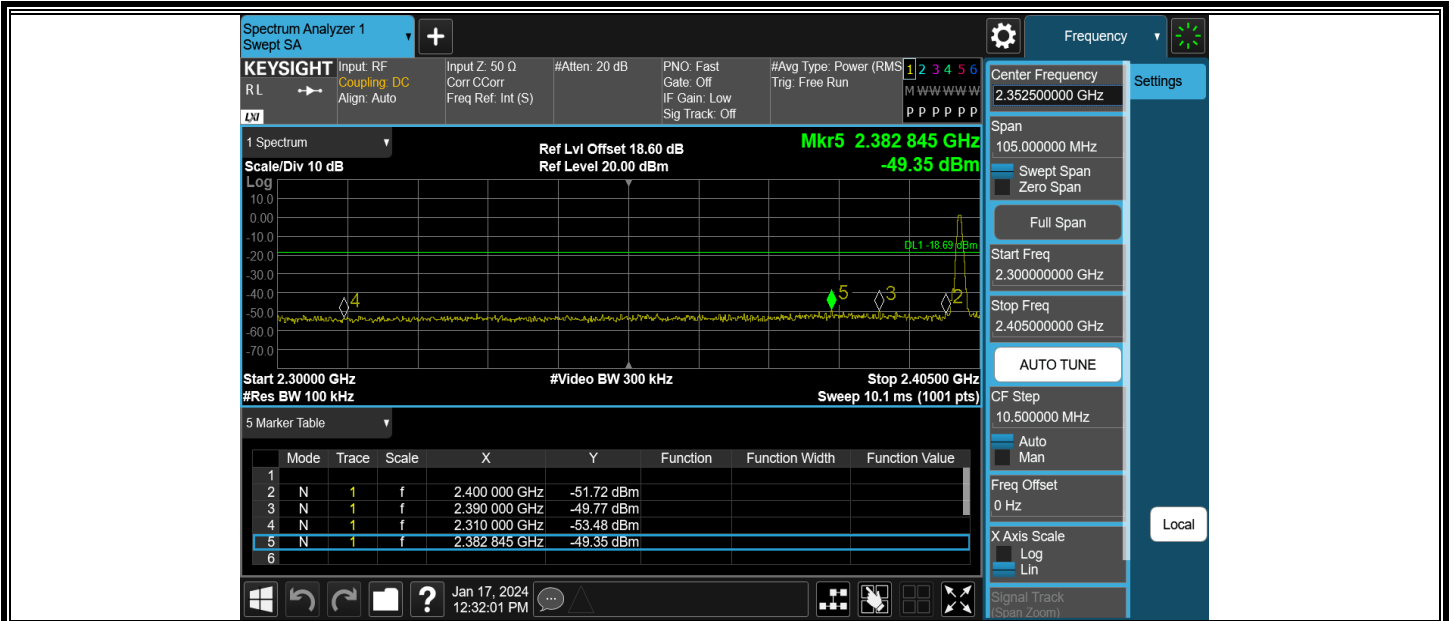
DH5-Ant1-2480-PASS



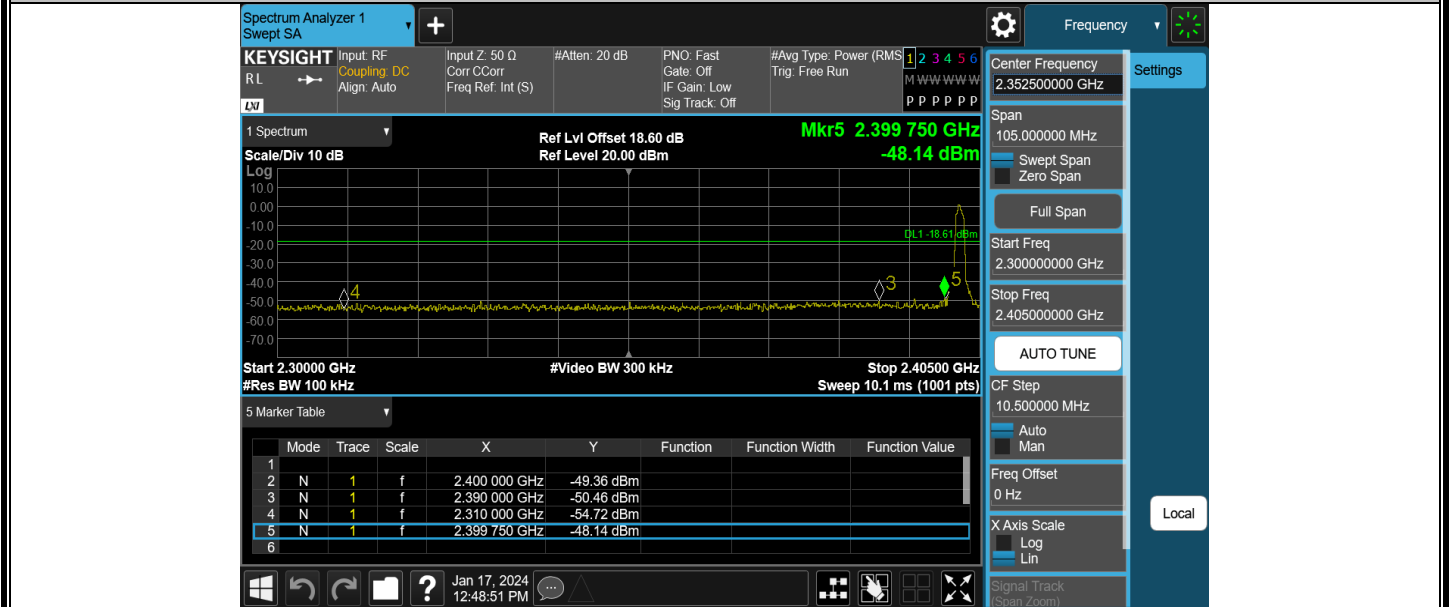
2DH5-Ant1-2480-PASS



DH5-Ant1-2402-PASS



2DH5-Ant1-2402-PASS

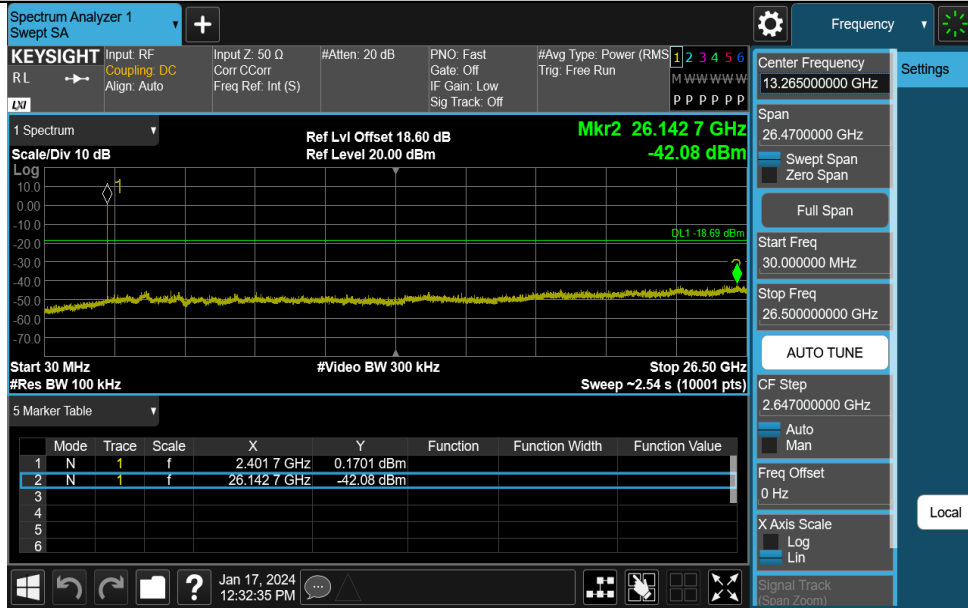


Appendix G: Conducted Spurious Emission Test Result

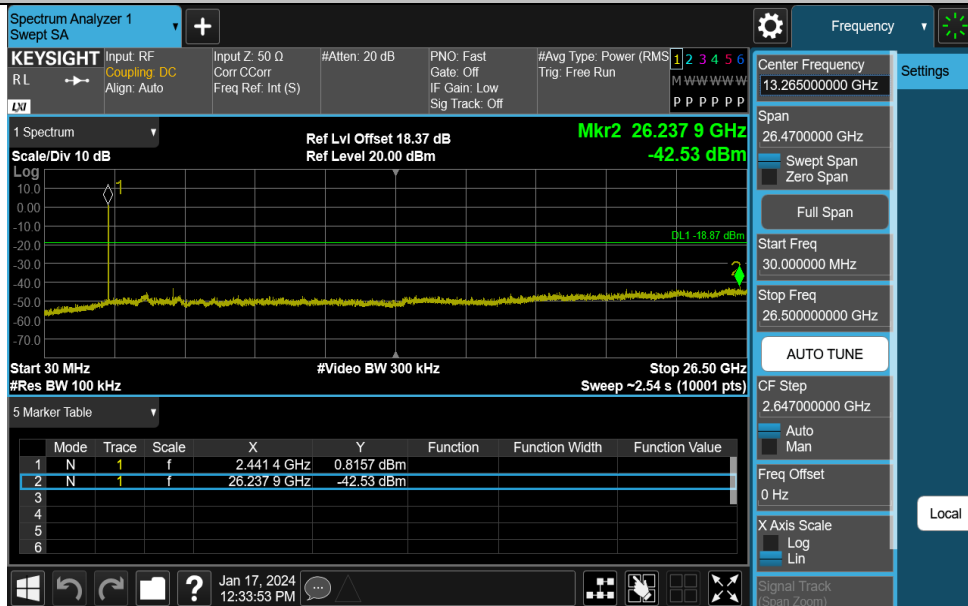
TestMode	Antenna	Frequency[MHz]	FreqRange [MHz]	RefLevel [dBm]	Result [dBm]	Limit [dBm]	Verdict
DH5	Ant1	2402	30~26500	1.31	-42.08	≤-18.69	PASS
DH5	Ant1	2441	30~26500	1.13	-42.53	≤-18.87	PASS
DH5	Ant1	2480	30~26500	1.64	-42.23	≤-18.36	PASS
2DH5	Ant1	2402	30~26500	1.39	-42.71	≤-18.61	PASS
2DH5	Ant1	2441	30~26500	1.56	-42.35	≤-18.44	PASS
2DH5	Ant1	2480	30~26500	-0.27	-42.45	≤-20.27	PASS

Test Graphs

DH5-Ant1-2402-30~26500-PASS

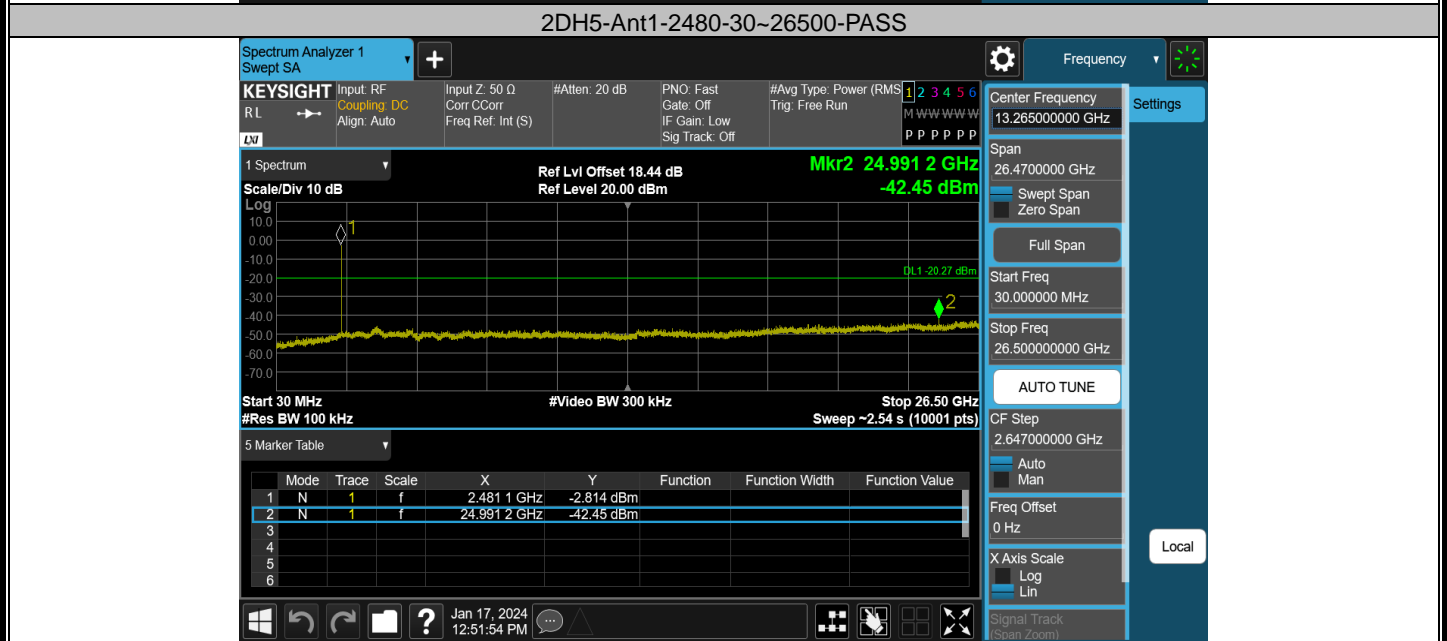
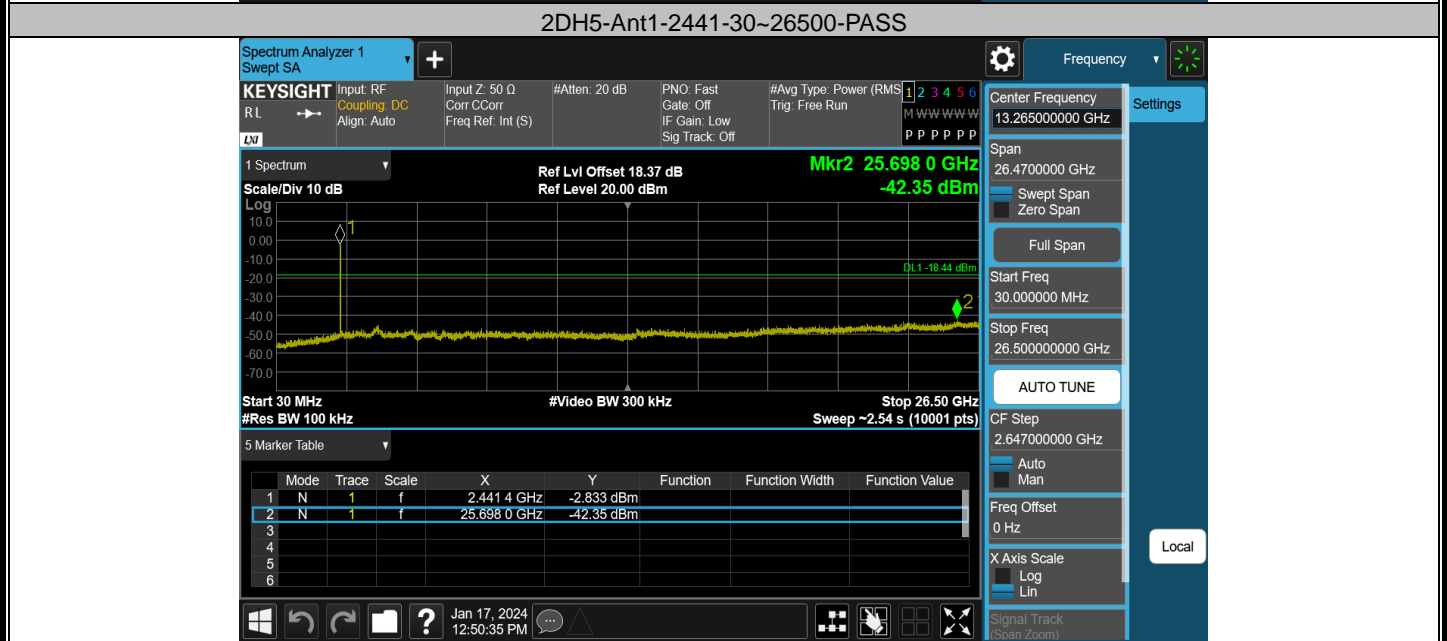
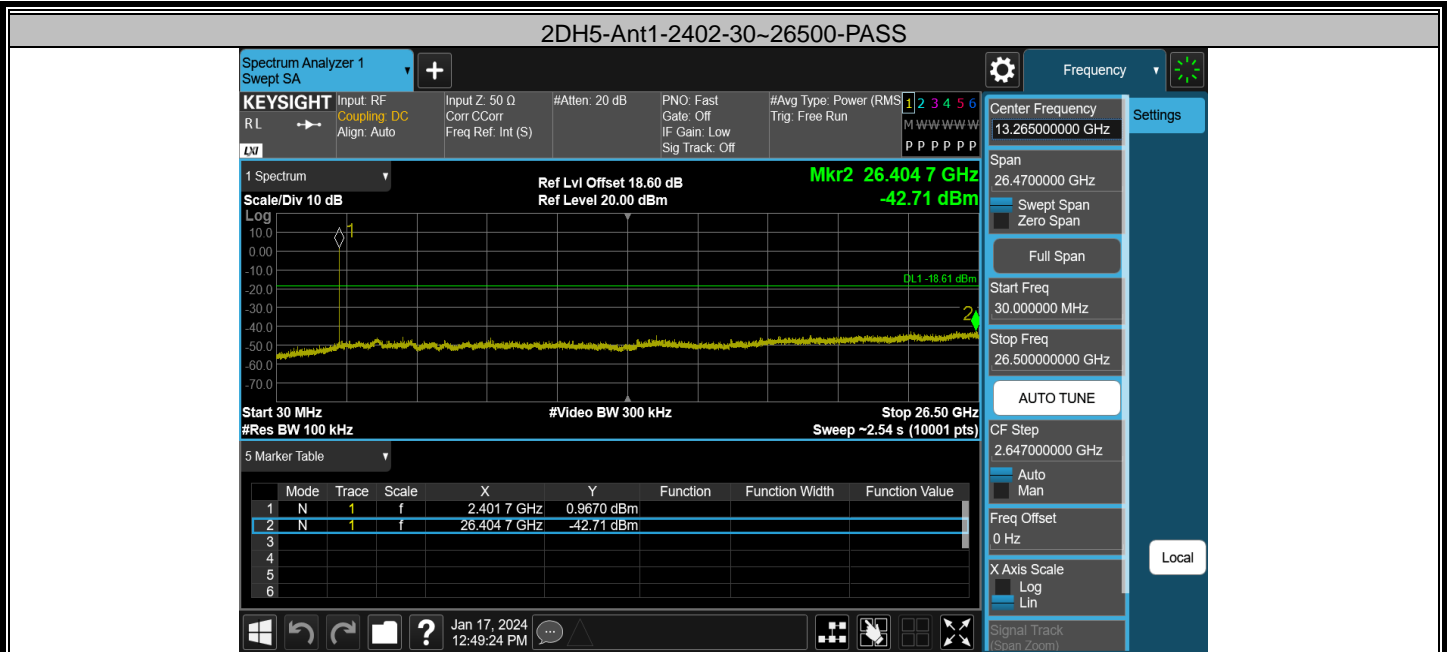


DH5-Ant1-2441-30~26500-PASS



DH5-Ant1-2480-30~26500-PASS







Appendix H: Reference level measurement
Test Result

TestMode	Antenna	Freq(MHz)	Max.Point[MHz]	Result[dBm]
DH5	Ant1	2402	2402.16	1.31
DH5	Ant1	2441	2441.00	1.13
DH5	Ant1	2480	2479.84	1.64
2DH5	Ant1	2402	2402.17	1.39
2DH5	Ant1	2441	2441.16	1.56
2DH5	Ant1	2480	2480.19	-0.27

Test Graphs

DH5-Ant1-2402-PASS



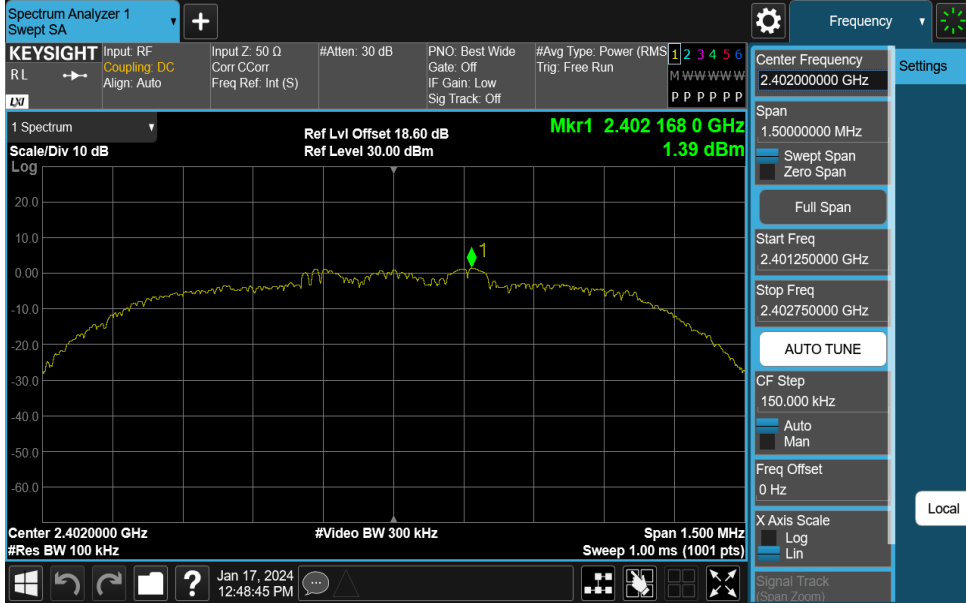
DH5-Ant1-2441-PASS



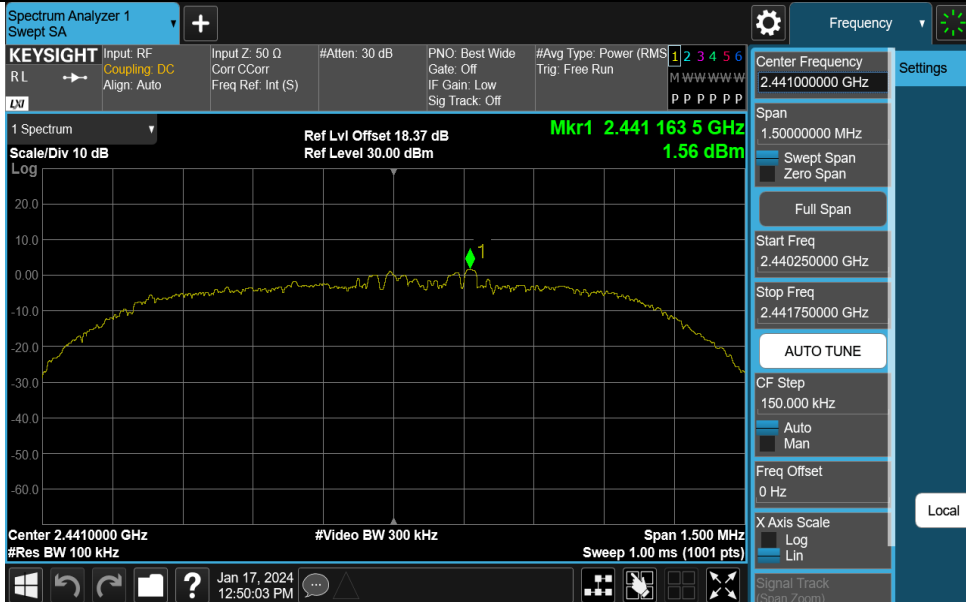
DH5-Ant1-2480-PASS



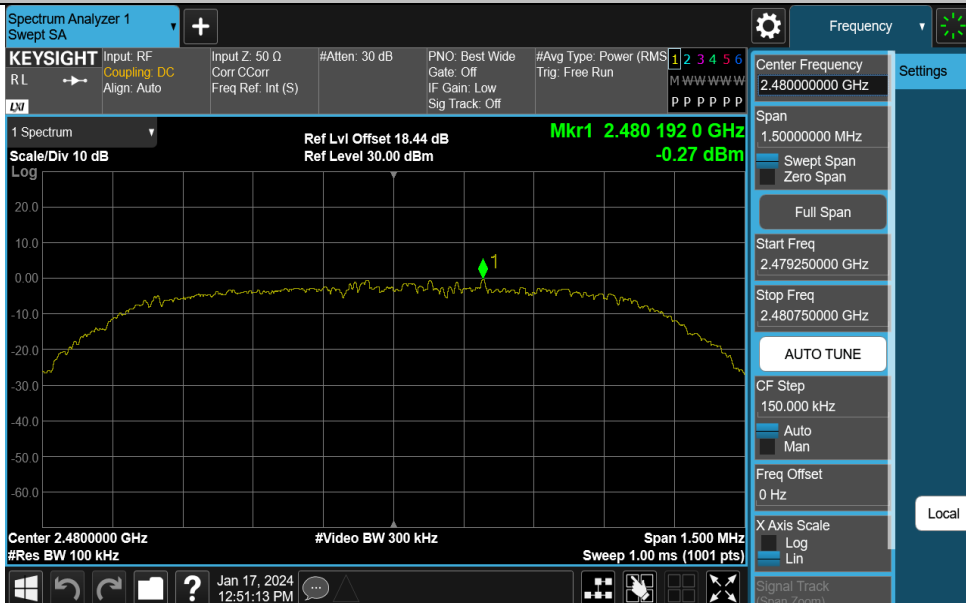
2DH5-Ant1-2402-PASS



2DH5-Ant1-2441-PASS



2DH5-Ant1-2480-PASS

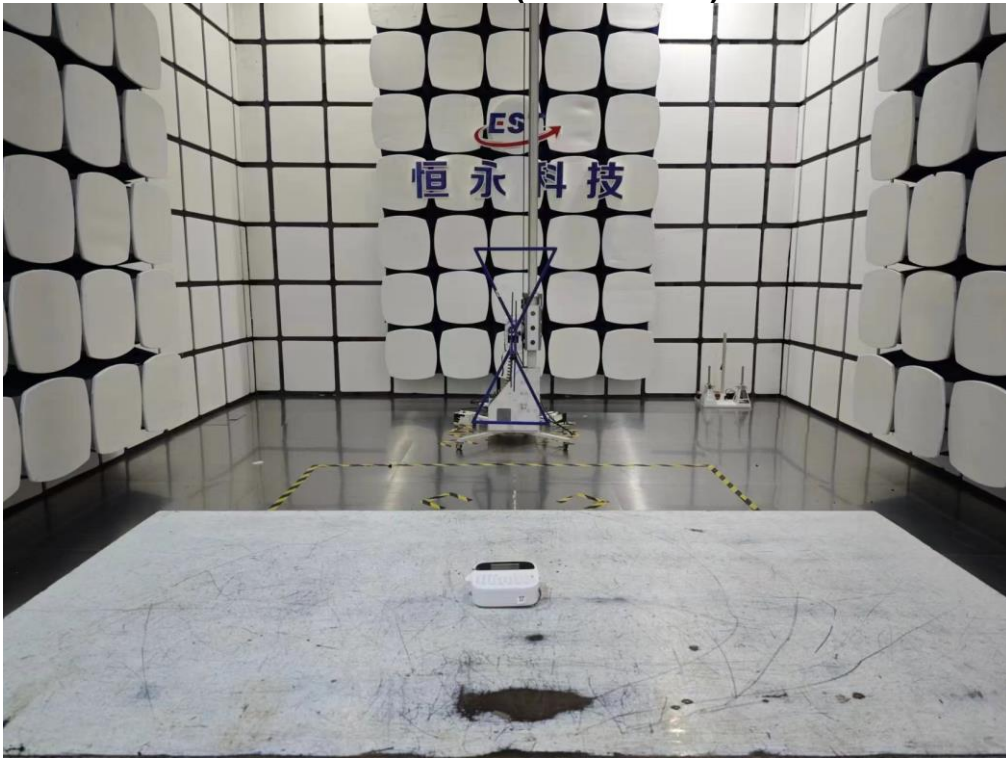


14. TEST SETUP PHOTO

Conducted Test



Radiated Test (Below 1GHz)



Radiated Test (Above 1GHz)



15. EUT PHOTO

External Photos
M/N: M950



External Photos
M/N: M950



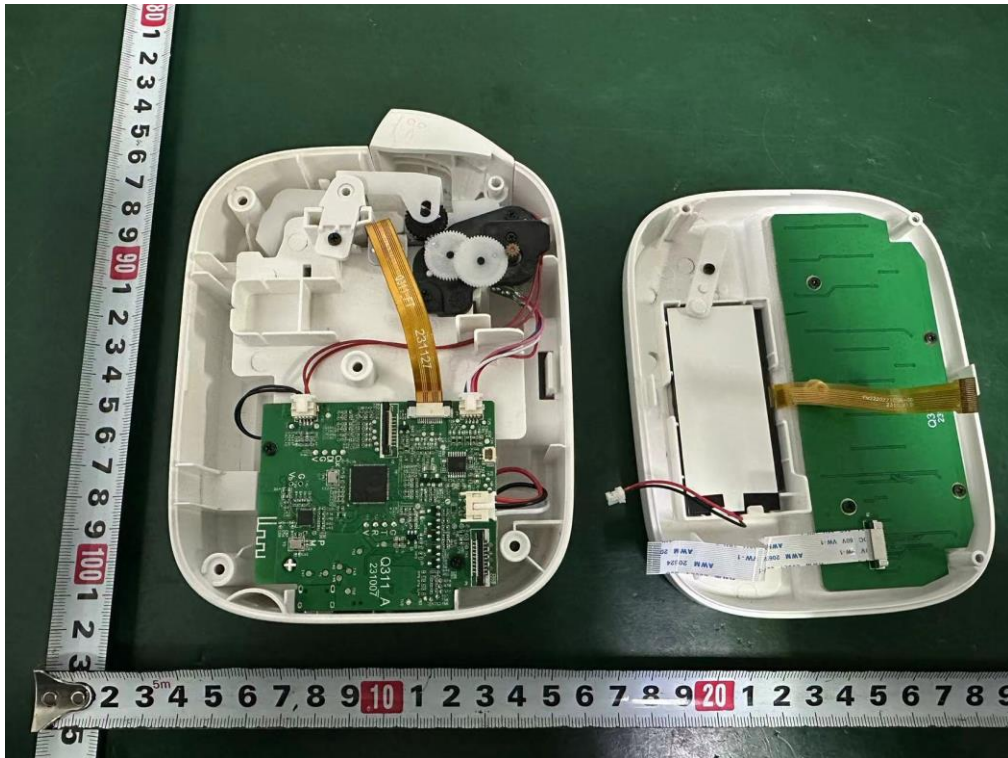
External Photos
M/N: M950



Internal Photos
M/N: M950

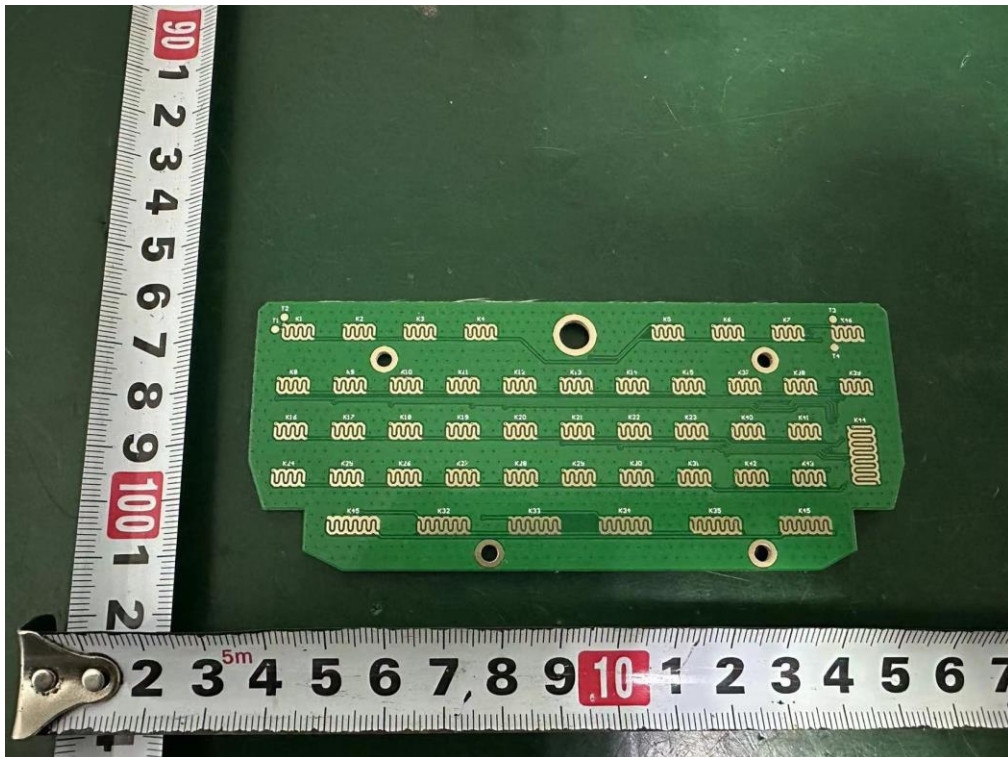
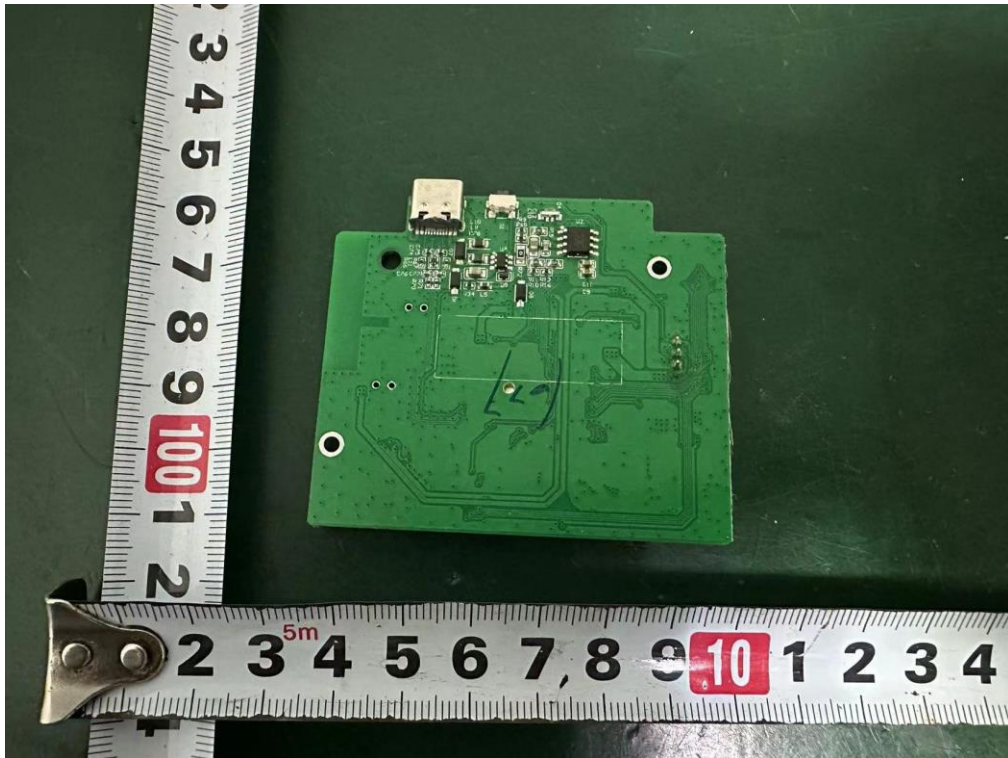


Internal Photos M/N: M950



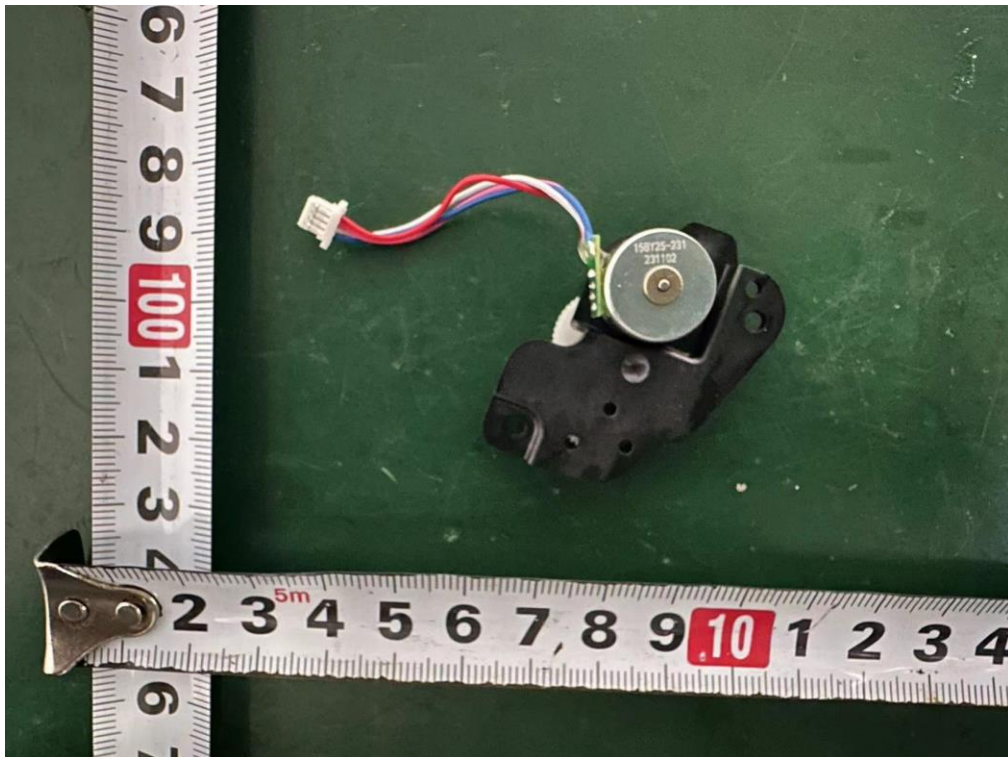
Bluetooth
Antenna

Internal Photos
M/N: M950



Internal Photos

M/N: M950



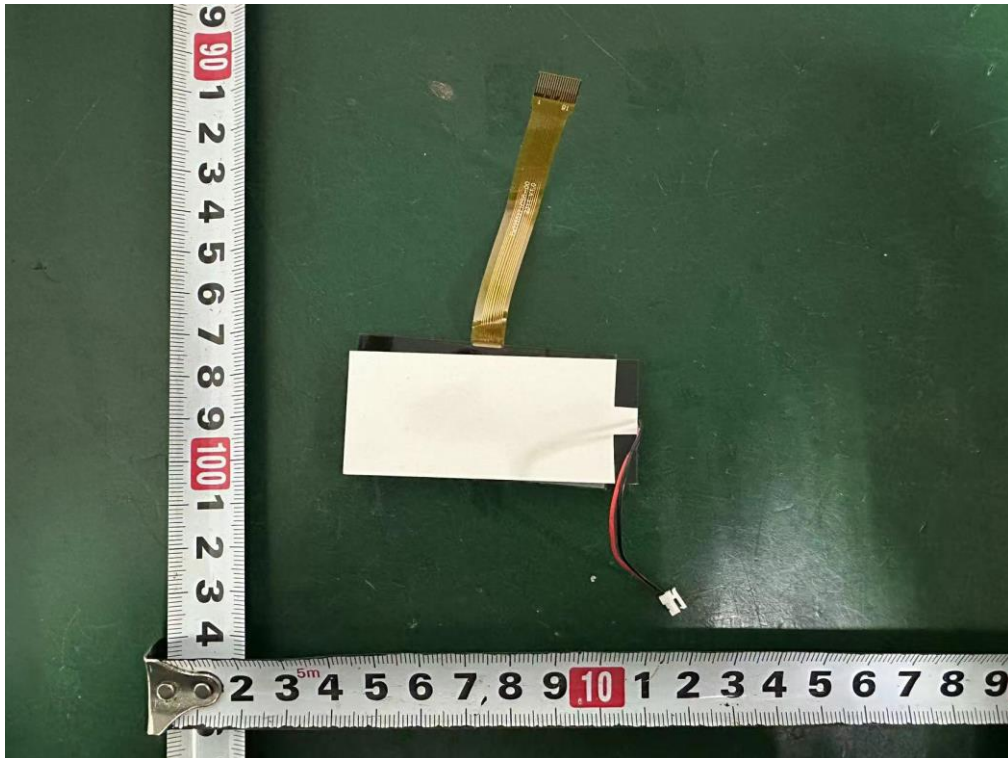
Internal Photos

M/N: M950



Internal Photos

M/N: M950



Internal Photos

M/N: M950



End of Test Report