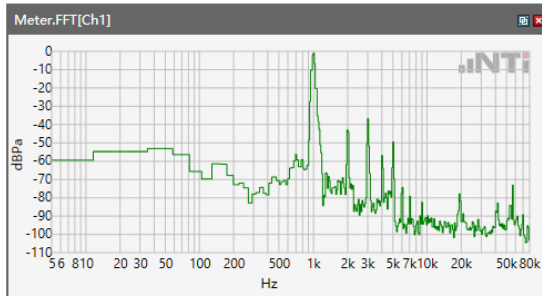


5.1 Receive Volume Control Performance 2N---EVS WB

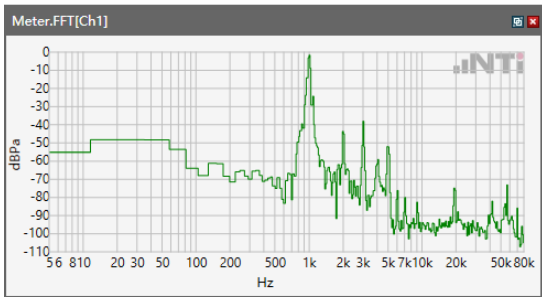
ANSI/TIA 5050-2018 \ 2N HAC ON \ EVS WB 24.4 kbps\LTE Band 2



Speech Level RCV: 93.41 dB[SPL]

Calculated Value: 23.41 dB Ok

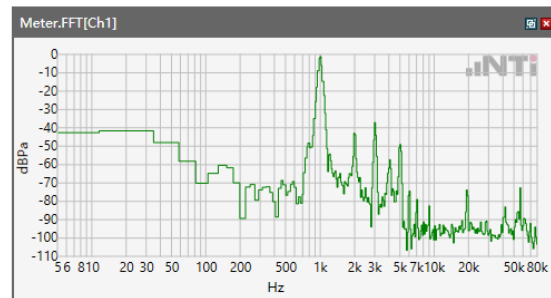
ANSI/TIA 5050-2018 \ 2N HAC ON \ EVS WB 24.4 kbps\LTE Band 5



Speech Level RCV: 93.22 dB[SPL]

Calculated Value: 23.22 dB Ok

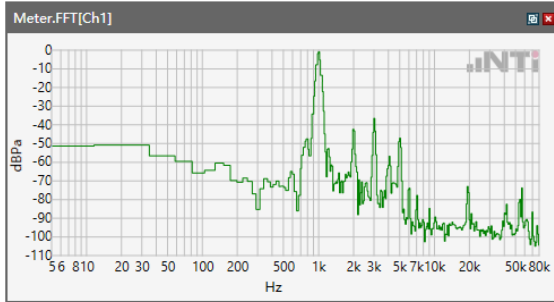
ANSI/TIA 5050-2018 \ 2N HAC ON \ EVS WB 24.4 kbps\LTE Band 7



Speech Level RCV: 93.59 dB[SPL]

Calculated Value: 23.59 dB Ok

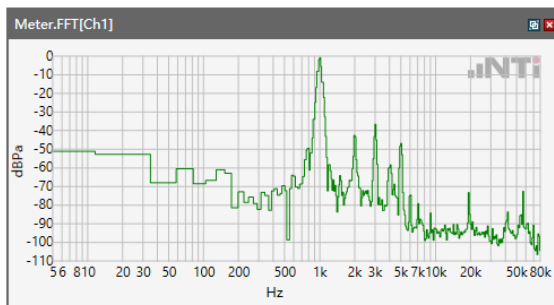
ANSI/TIA 5050-2018 \ 2N HAC ON \ EVS WB 24.4 kbps\LTE Band 12



Speech Level RCV: 93.85 dB[SPL]

Calculated Value: 23.85 dB Ok

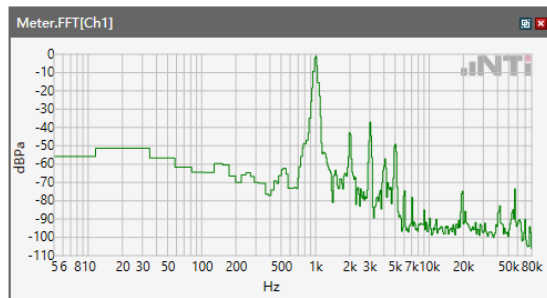
ANSI/TIA 5050-2018 \ 2N HAC ON \ EVS WB 24.4 kbps\LTE Band 41



Speech Level RCV: 93.09 dB[SPL]

Calculated Value: 23.09 dB Ok

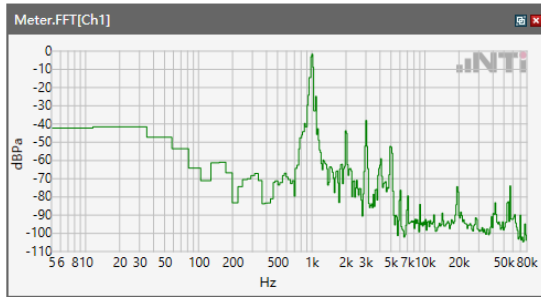
ANSI/TIA 5050-2018 \ 2N HAC ON \ EVS WB 24.4 kbps\LTE Band 66



Speech Level RCV: 94.02 dB[SPL]

Calculated Value: 24.02 dB Ok

ANSI/TIA 5050-2018 \ 2N HAC ON \ EVS WB 24.4 kbps\LTE BAND 71



Speech Level RCV: 93.27 dB[SPL]

Calculated Value: 23.27 dB Ok