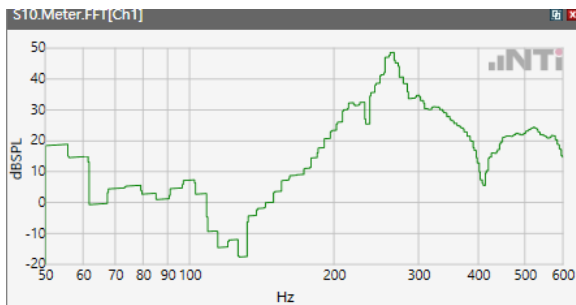
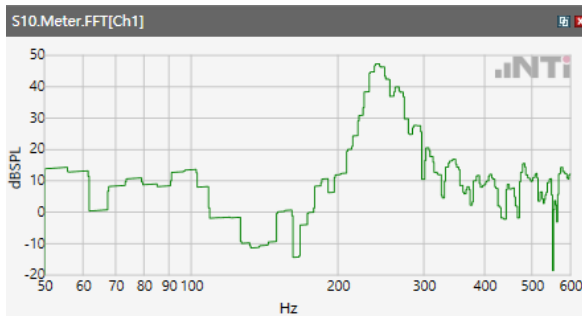


## Receive path - distortion and noise 250 WB only

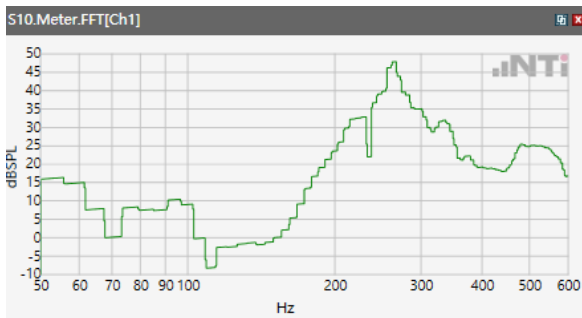
ANSI/TIA 5050-2018 \ 2N HAC ON \ WB 23.85 kbps\ 5.2 Receive path – distortion and noise\  
WCDMA II



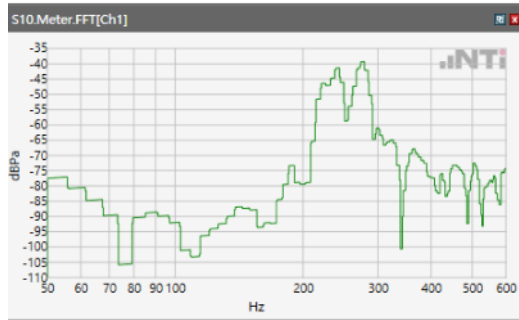
ANSI/TIA 5050-2018 \ 2N HAC ON \ WB 23.85 kbps\ 5.2 Receive path – distortion and noise\  
WCDMA IV



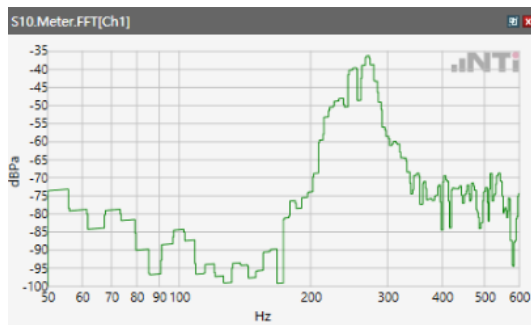
ANSI/TIA 5050-2018 \ 2N HAC ON \ WB 23.85 kbps\ 5.2 Receive path – distortion and noise\  
WCDMA V



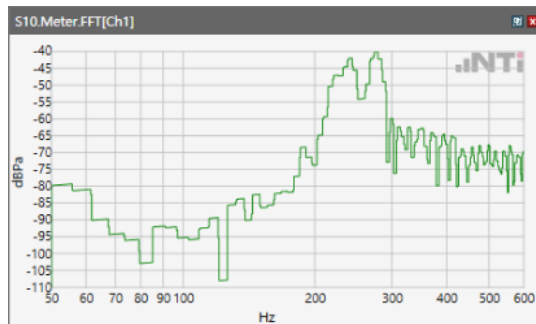
ANSI/TIA 5050-2018 \ 2N HAC ON \ WB 23.85 kbps\ 5.2 Receive path – distortion and noise\ LTE Band 2



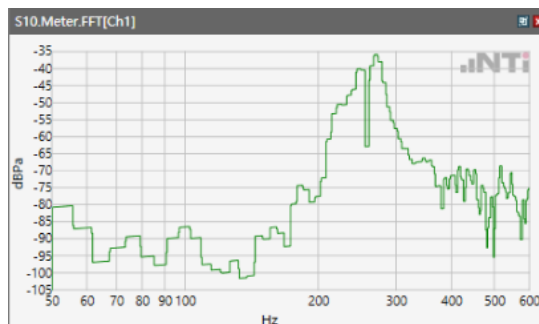
ANSI/TIA 5050-2018 \ 2N HAC ON \ WB 23.85 kbps\ 5.2 Receive path – distortion and noise\ LTE Band 5



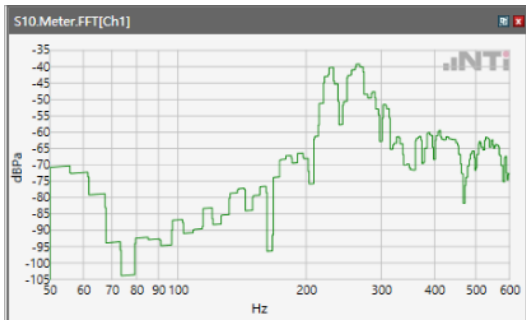
ANSI/TIA 5050-2018 \ 2N HAC ON \ WB 23.85 kbps\ 5.2 Receive path – distortion and noise\ LTE Band 7



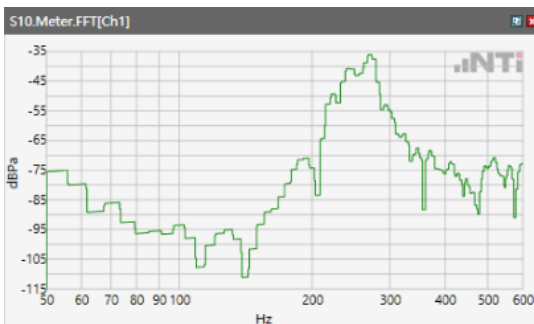
ANSI/TIA 5050-2018 \ 2N HAC ON \ WB 23.85 kbps\ 5.2 Receive path – distortion and noise\ LTE Band 12



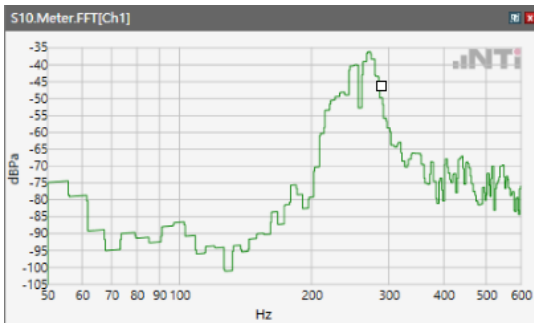
ANSI/TIA 5050-2018 \ 2N HAC ON \ WB 23.85 kbps\ 5.2 Receive path – distortion and noise\ LTE Band 41



ANSI/TIA 5050-2018 \ 2N HAC ON \ WB 23.85 kbps\ 5.2 Receive path – distortion and noise\ LTE Band 66

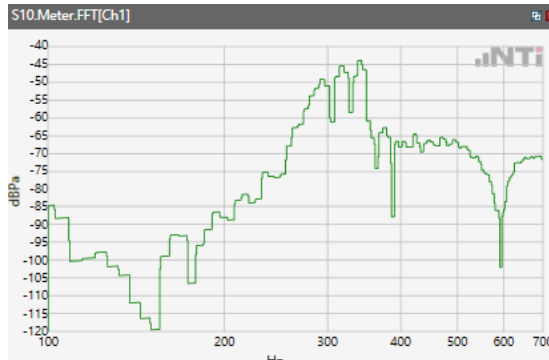


ANSI/TIA 5050-2018 \ 2N HAC ON \ WB 23.85 kbps\ 5.2 Receive path – distortion and noise\ LTE BAND 71

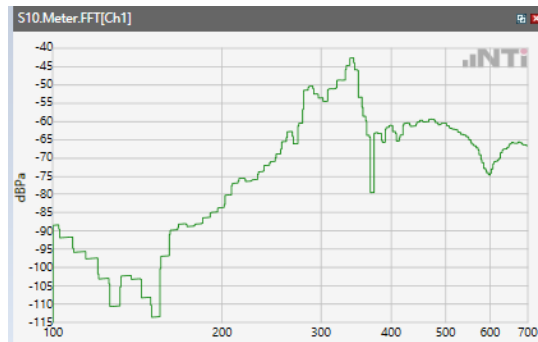


## Receive path - distortion and noise 315Hz WB only

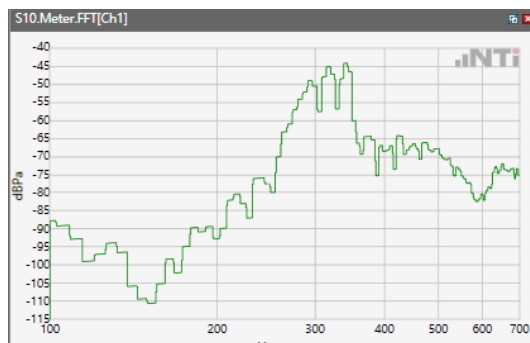
ANSI/TIA 5050-2018 \ 2N HAC ON \ WB 23.85 kbps\ 5.2 Receive path – distortion and noise\  
WCDMA II



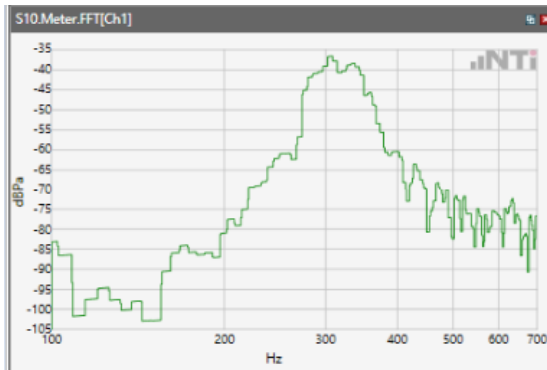
ANSI/TIA 5050-2018 \ 2N HAC ON \ WB 23.85 kbps\ 5.2 Receive path – distortion and noise\  
WCDMA IV



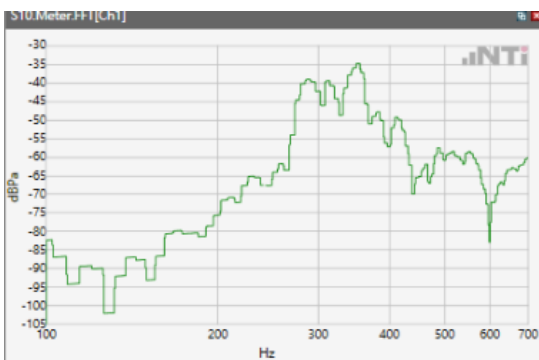
ANSI/TIA 5050-2018 \ 2N HAC ON \ WB 23.85 kbps\ 5.2 Receive path – distortion and noise\  
WCDMA V



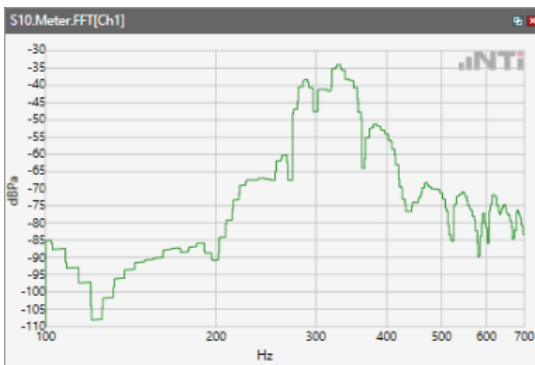
ANSI/TIA 5050-2018 \ 2N HAC ON \ WB 23.85 kbps\ 5.2 Receive path – distortion and noise\ LTE Band 2



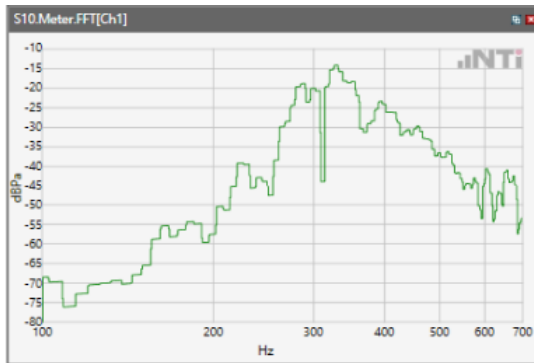
ANSI/TIA 5050-2018 \ 2N HAC ON \ WB 23.85 kbps\ 5.2 Receive path – distortion and noise\ LTE Band 5



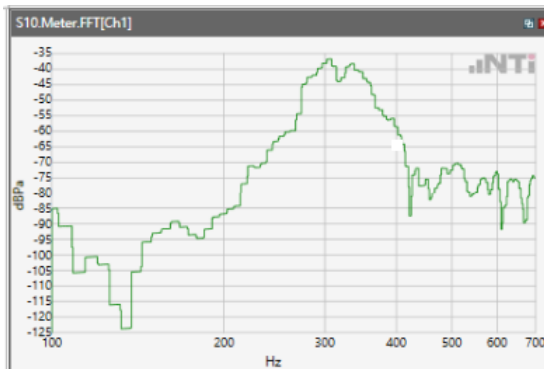
ANSI/TIA 5050-2018 \ 2N HAC ON \ WB 23.85 kbps\ 5.2 Receive path – distortion and noise\ LTE Band 12



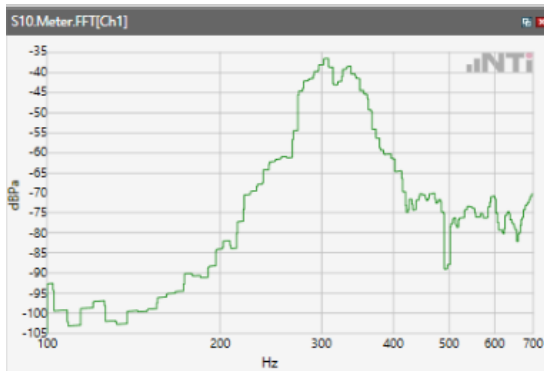
## ANSI/TIA 5050-2018 \ 2N HAC ON \ WB 23.85 kbps\ 5.2 Receive path – distortion and noise\ LTE Band 41



## ANSI/TIA 5050-2018 \ 2N HAC ON \ WB 23.85 kbps\ 5.2 Receive path – distortion and noise\ LTE Band 66

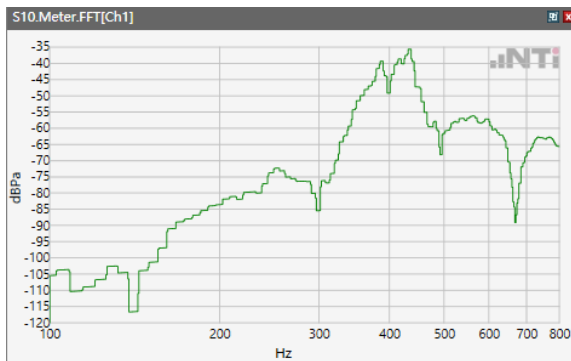


## ANSI/TIA 5050-2018 \ 2N HAC ON \ WB 23.85 kbps\ 5.2 Receive path – distortion and noise\ LTE BAND 71

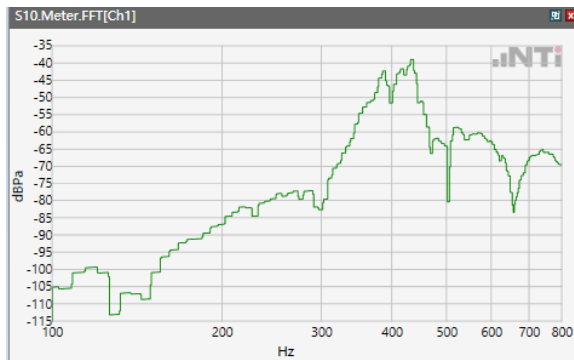


## Receive path - distortion and noise 400Hz WB&NB

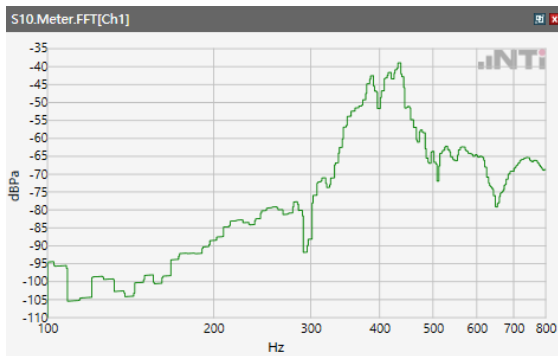
ANSI/TIA 5050-2018 \ 2N HAC ON \ WB 23.85 kbps\ 5.2 Receive path – distortion and noise\  
WCDMA II



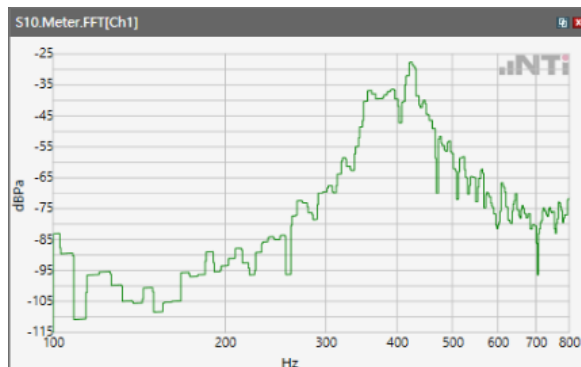
ANSI/TIA 5050-2018 \ 2N HAC ON \ WB 23.85 kbps\ 5.2 Receive path – distortion and noise\  
WCDMA IV



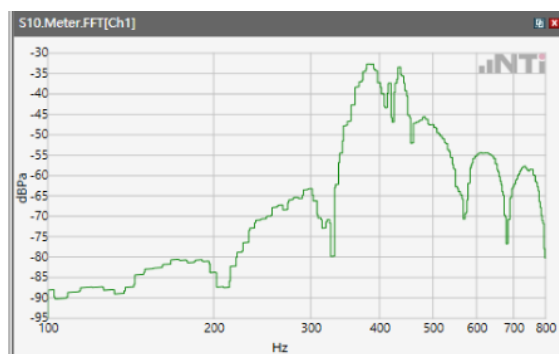
ANSI/TIA 5050-2018 \ 2N HAC ON \ WB 23.85 kbps\ 5.2 Receive path – distortion and noise\  
WCDMA V



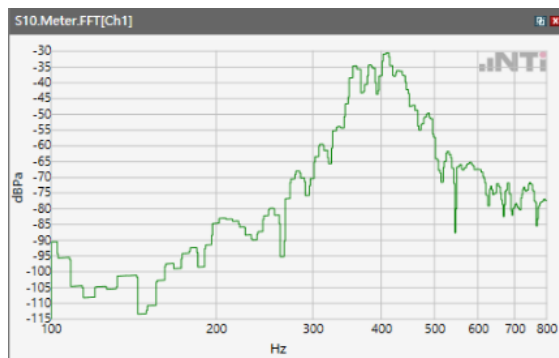
ANSI/TIA 5050-2018 \ 2N HAC ON \ WB 23.85 kbps\ 5.2 Receive path – distortion and noise\ LTE Band 2



ANSI/TIA 5050-2018 \ 2N HAC ON \ WB 23.85 kbps\ 5.2 Receive path – distortion and noise\ LTE Band 5

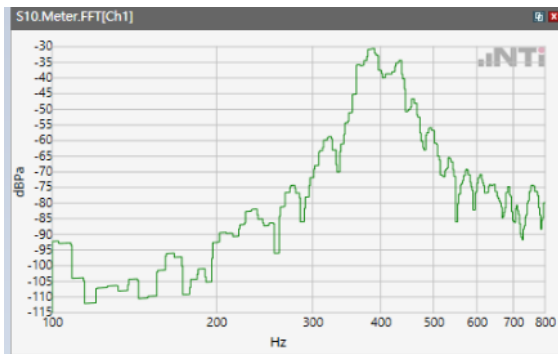


ANSI/TIA 5050-2018 \ 2N HAC ON \ WB 23.85 kbps\ 5.2 Receive path – distortion and noise\ LTE Band 7

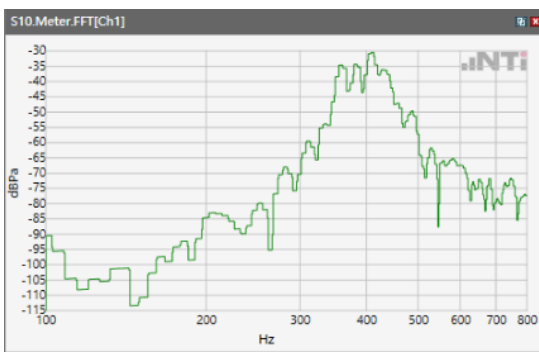




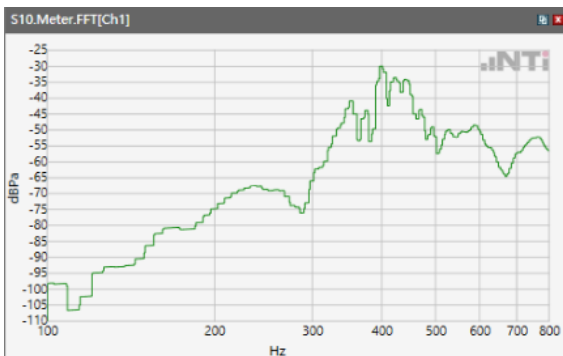
ANSI/TIA 5050-2018 \ 2N HAC ON \ WB 23.85 kbps\ 5.2 Receive path – distortion and noise\ LTE Band 12



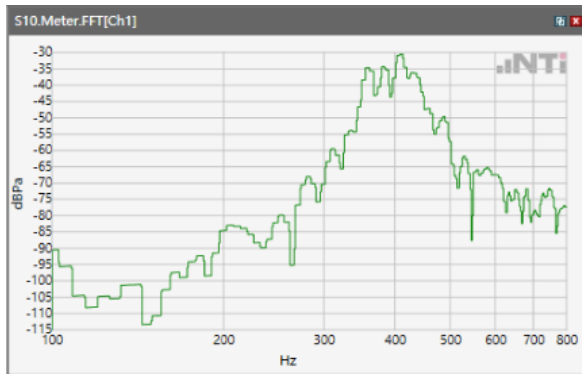
ANSI/TIA 5050-2018 \ 2N HAC ON \ WB 23.85 kbps\ 5.2 Receive path – distortion and noise\ LTE Band 41



ANSI/TIA 5050-2018 \ 2N HAC ON \ WB 23.85 kbps\ 5.2 Receive path – distortion and noise\ LTE Band 66

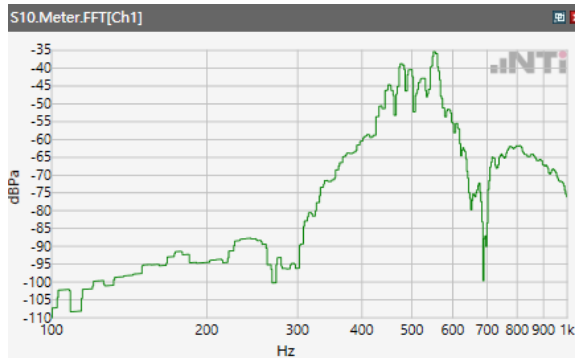


ANSI/TIA 5050-2018 \ 2N HAC ON \ WB 23.85 kbps\ 5.2 Receive path – distortion and noise\ LTE BAND 71

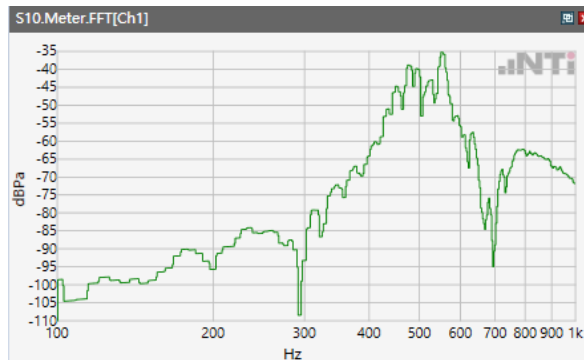


## Receive path - distortion and noise 500Hz WB&NB

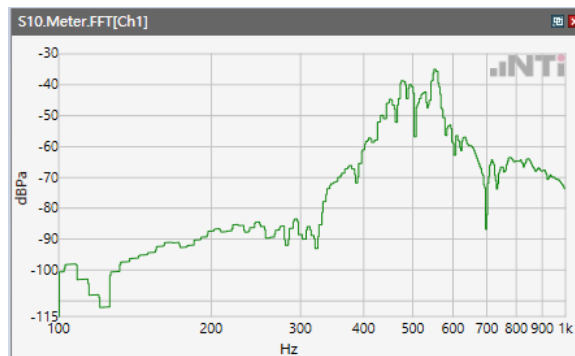
ANSI/TIA 5050-2018 \ 2N HAC ON \ WB 23.85 kbps\ 5.2 Receive path – distortion and noise\  
WCDMA II



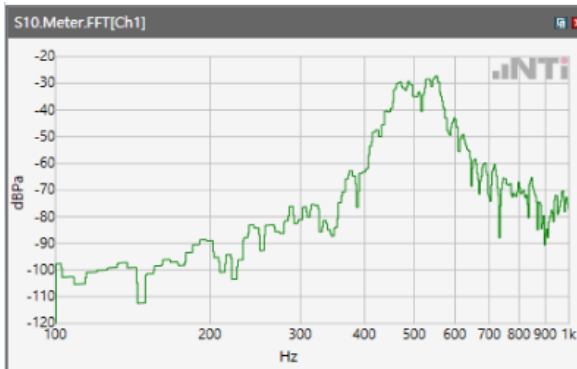
ANSI/TIA 5050-2018 \ 2N HAC ON \ WB 23.85 kbps\ 5.2 Receive path – distortion and noise\  
WCDMA IV



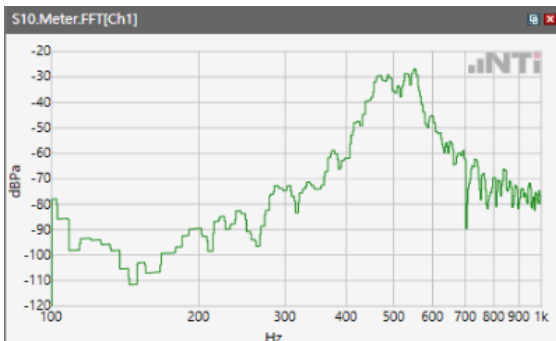
ANSI/TIA 5050-2018 \ 2N HAC ON \ WB 23.85 kbps\ 5.2 Receive path – distortion and noise\  
WCDMA V



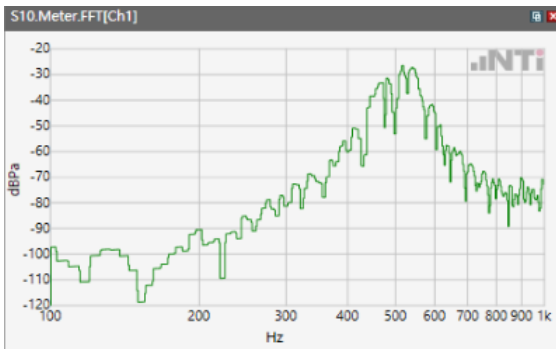
ANSI/TIA 5050-2018 \ 2N HAC ON \ WB 23.85 kbps\ 5.2 Receive path – distortion and noise\ LTE Band 2



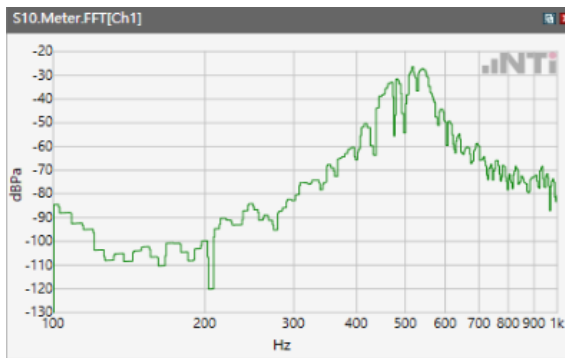
ANSI/TIA 5050-2018 \ 2N HAC ON \ WB 23.85 kbps\ 5.2 Receive path – distortion and noise\ LTE Band 5



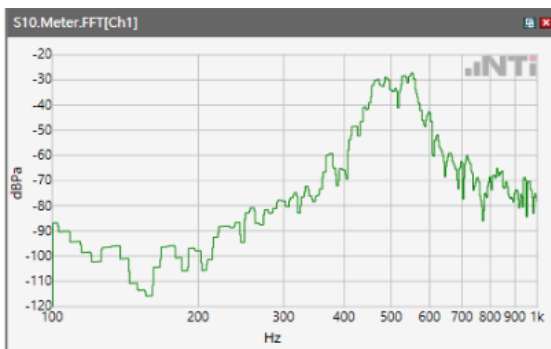
ANSI/TIA 5050-2018 \ 2N HAC ON \ WB 23.85 kbps\ 5.2 Receive path – distortion and noise\ LTE Band 7



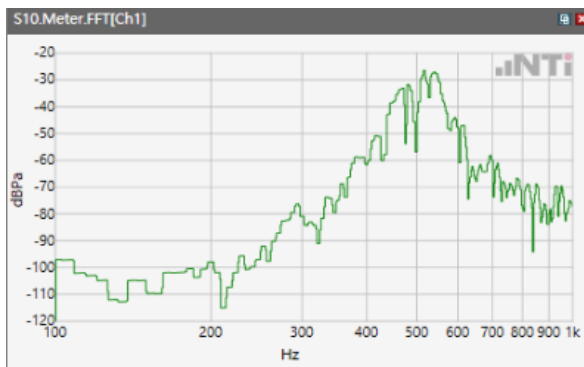
## ANSI/TIA 5050-2018 \ 2N HAC ON \ WB 23.85 kbps\ 5.2 Receive path – distortion and noise\ LTE Band 12



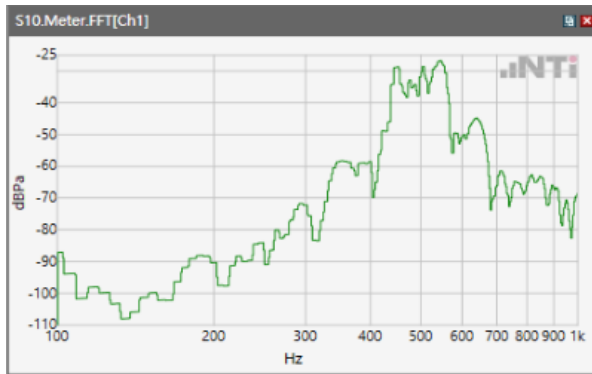
## ANSI/TIA 5050-2018 \ 2N HAC ON \ WB 23.85 kbps\ 5.2 Receive path – distortion and noise\ LTE Band 41



## ANSI/TIA 5050-2018 \ 2N HAC ON \ WB 23.85 kbps\ 5.2 Receive path – distortion and noise\ LTE Band 66

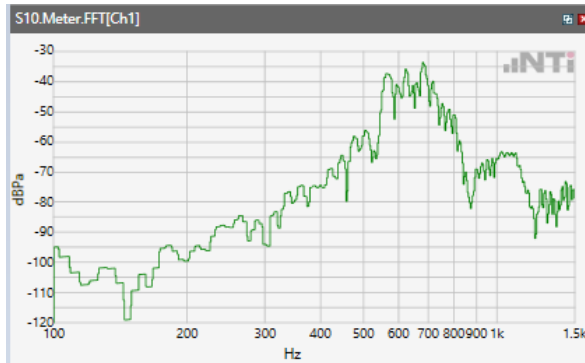


ANSI/TIA 5050-2018 \ 2N HAC ON \ WB 23.85 kbps\ 5.2 Receive path – distortion and noise\ LTE BAND 71

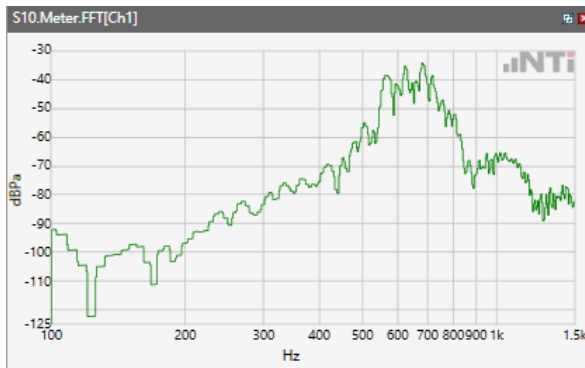


## Receive path - distortion and noise 630Hz WB&NB

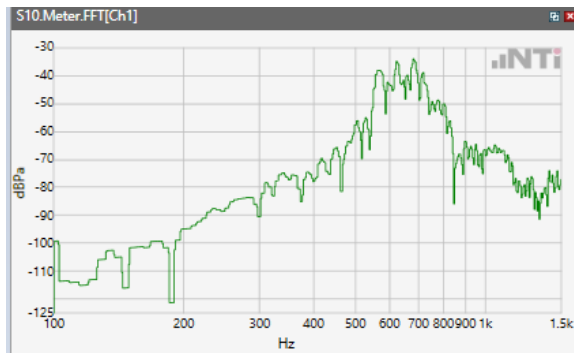
ANSI/TIA 5050-2018 \ 2N HAC ON \ WB 23.85 kbps\ 5.2 Receive path – distortion and noise\  
WCDMA II



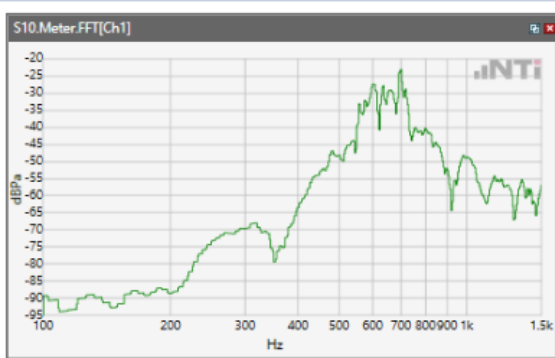
ANSI/TIA 5050-2018 \ 2N HAC ON \ WB 23.85 kbps\ 5.2 Receive path – distortion and noise\  
WCDMA IV



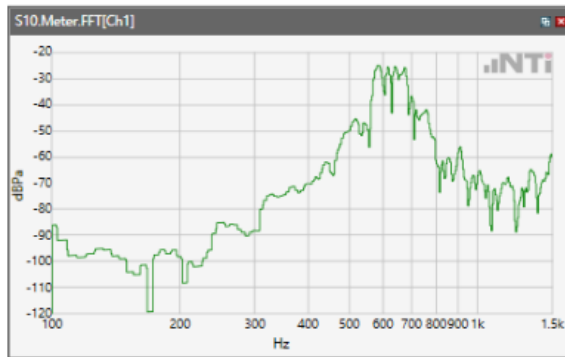
ANSI/TIA 5050-2018 \ 2N HAC ON \ WB 23.85 kbps\ 5.2 Receive path – distortion and noise\  
WCDMA V



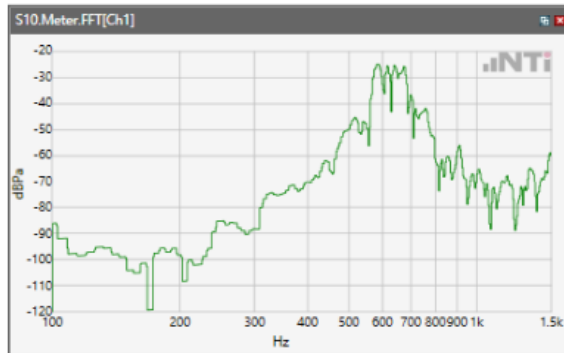
ANSI/TIA 5050-2018 \ 2N HAC ON \ WB 23.85 kbps\ 5.2 Receive path – distortion and noise\ LTE Band 2



ANSI/TIA 5050-2018 \ 2N HAC ON \ WB 23.85 kbps\ 5.2 Receive path – distortion and noise\ LTE Band 5

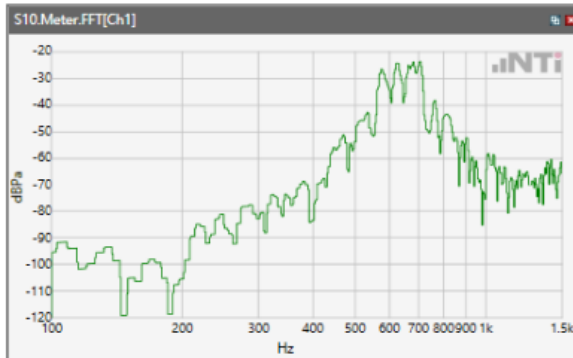


ANSI/TIA 5050-2018 \ 2N HAC ON \ WB 23.85 kbps\ 5.2 Receive path – distortion and noise\ LTE Band 7

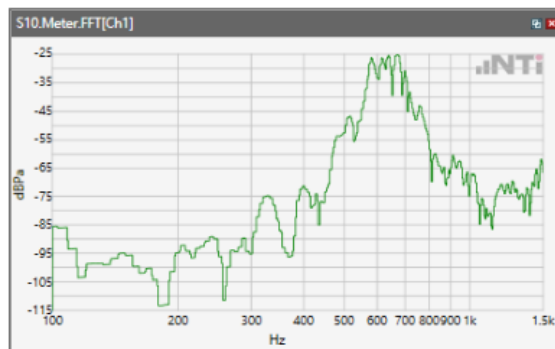




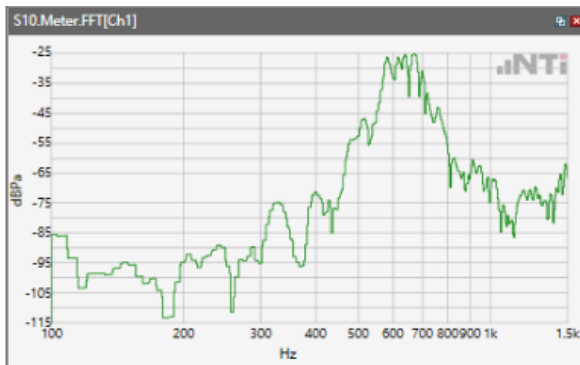
ANSI/TIA 5050-2018 \ 2N HAC ON \ WB 23.85 kbps\ 5.2 Receive path – distortion and noise\ LTE Band 12



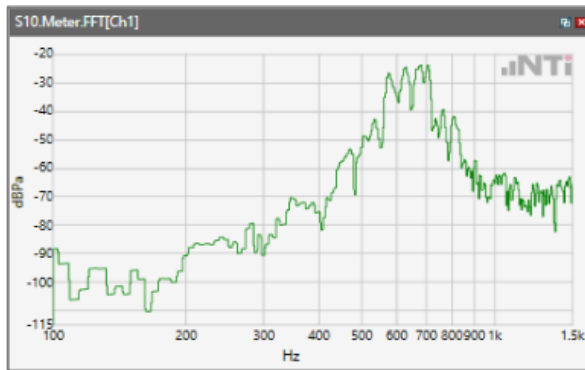
ANSI/TIA 5050-2018 \ 2N HAC ON \ WB 23.85 kbps\ 5.2 Receive path – distortion and noise\ LTE Band 41



ANSI/TIA 5050-2018 \ 2N HAC ON \ WB 23.85 kbps\ 5.2 Receive path – distortion and noise\ LTE Band 66

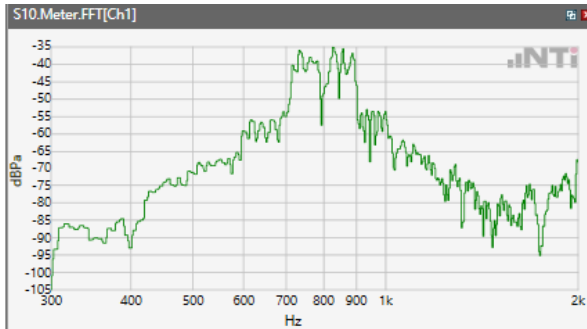


ANSI/TIA 5050-2018 \ 2N HAC ON \ WB 23.85 kbps \ 5.2 Receive path – distortion and noise \ LTE BAND 71

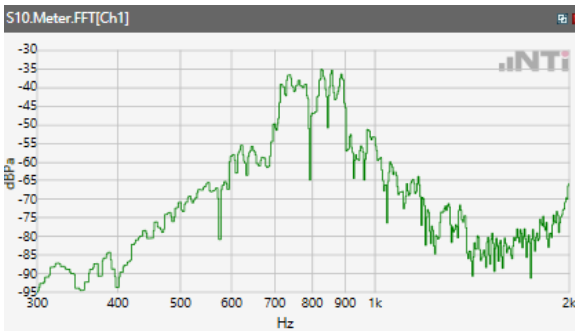


## Receive path - distortion and noise 800Hz WB&NB

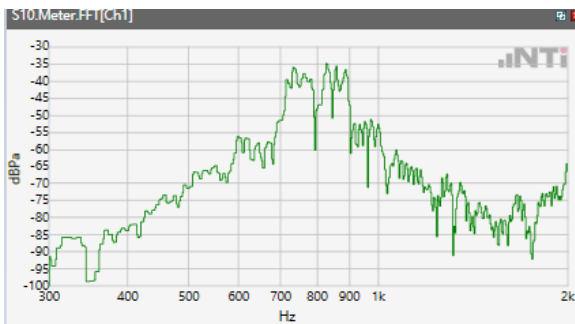
ANSI/TIA 5050-2018 \ 2N HAC ON \ WB 23.85 kbps\ 5.2 Receive path – distortion and noise\  
WCDMA II



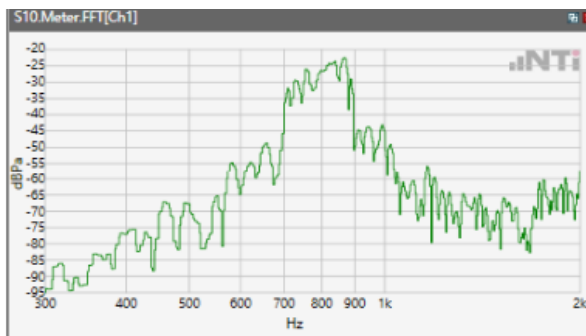
ANSI/TIA 5050-2018 \ 2N HAC ON \ WB 23.85 kbps\ 5.2 Receive path – distortion and noise\  
WCDMA IV



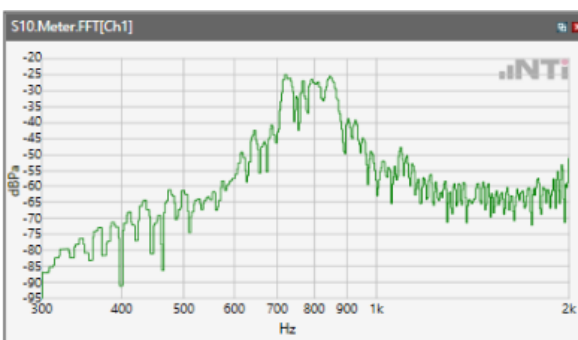
ANSI/TIA 5050-2018 \ 2N HAC ON \ WB 23.85 kbps\ 5.2 Receive path – distortion and noise\  
WCDMA V



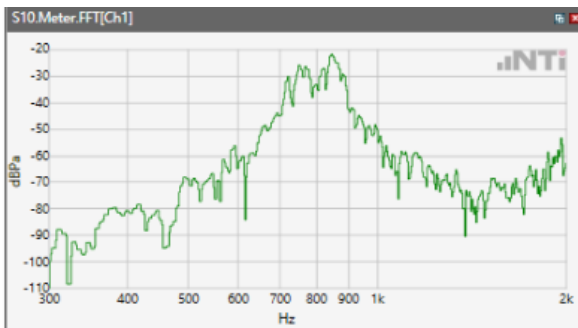
ANSI/TIA 5050-2018 \ 2N HAC ON \ WB 23.85 kbps\ 5.2 Receive path – distortion and noise\ LTE Band 2



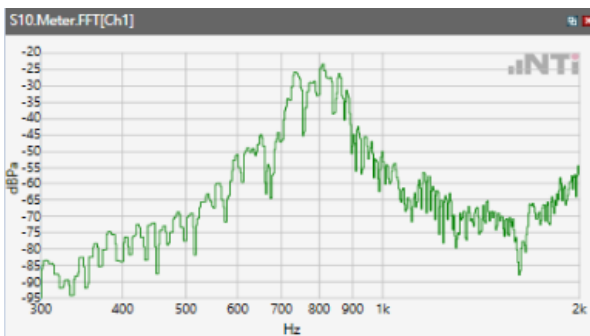
ANSI/TIA 5050-2018 \ 2N HAC ON \ WB 23.85 kbps\ 5.2 Receive path – distortion and noise\ LTE Band 5



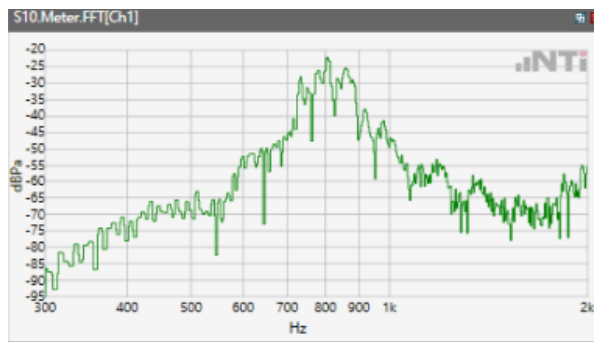
ANSI/TIA 5050-2018 \ 2N HAC ON \ WB 23.85 kbps\ 5.2 Receive path – distortion and noise\ LTE Band 7



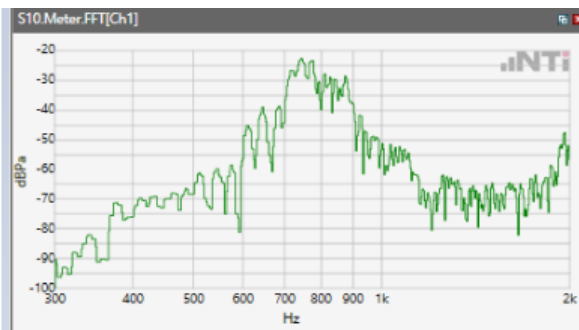
ANSI/TIA 5050-2018 \ 2N HAC ON \ WB 23.85 kbps\ 5.2 Receive path – distortion and noise\ LTE Band 12



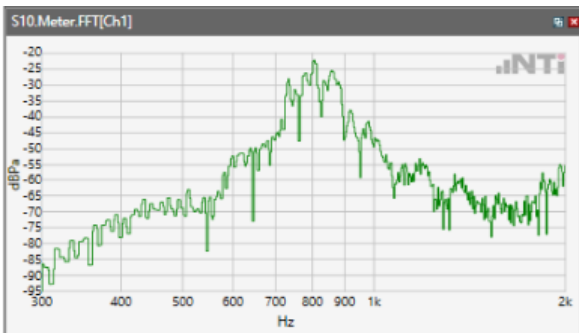
ANSI/TIA 5050-2018 \ 2N HAC ON \ WB 23.85 kbps\ 5.2 Receive path – distortion and noise\ LTE Band 41



ANSI/TIA 5050-2018 \ 2N HAC ON \ WB 23.85 kbps\ 5.2 Receive path – distortion and noise\ LTE Band 66

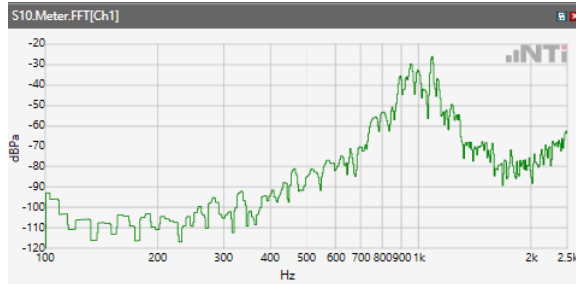


ANSI/TIA 5050-2018 \ 2N HAC ON \ WB 23.85 kbps\ 5.2 Receive path – distortion and noise\ LTE BAND 71

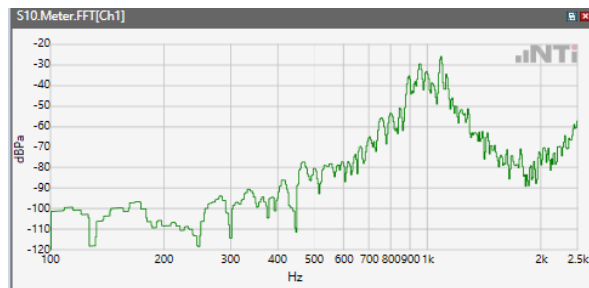


## Receive path - distortion and noise 1000Hz WB&NB

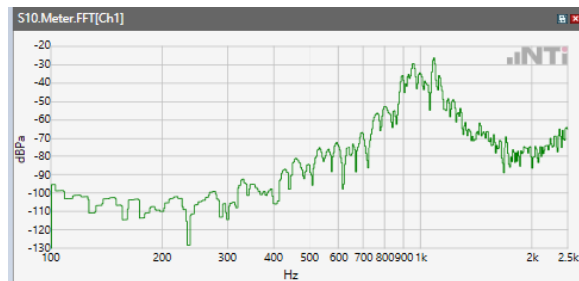
ANSI/TIA 5050-2018 \ 2N HAC ON \ WB 23.85 kbps\ 5.2 Receive path – distortion and noise\ WCDMA II



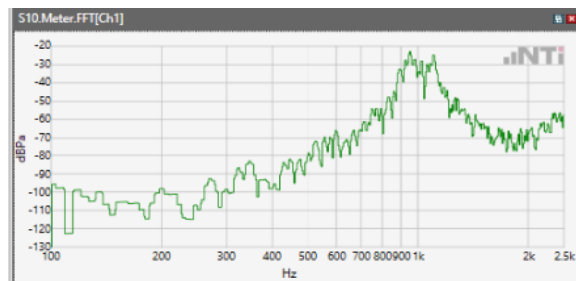
ANSI/TIA 5050-2018 \ 2N HAC ON \ WB 23.85 kbps\ 5.2 Receive path – distortion and noise\ WCDMA IV



ANSI/TIA 5050-2018 \ 2N HAC ON \ WB 23.85 kbps\ 5.2 Receive path – distortion and noise\ WCDMA V



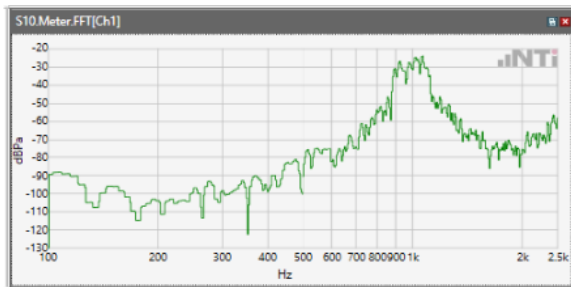
ANSI/TIA 5050-2018 \ 2N HAC ON \ WB 23.85 kbps\ 5.2 Receive path – distortion and noise\ LTE Band 2



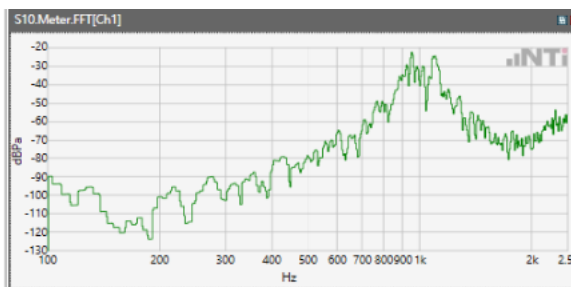
ANSI/TIA 5050-2018 \ 2N HAC ON \ WB 23.85 kbps\ 5.2 Receive path – distortion and noise\ LTE Band 5



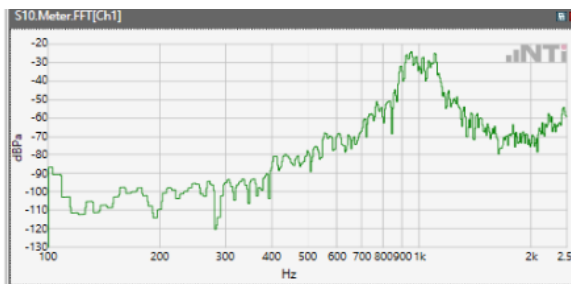
ANSI/TIA 5050-2018 \ 2N HAC ON \ WB 23.85 kbps\ 5.2 Receive path – distortion and noise\ LTE Band 7



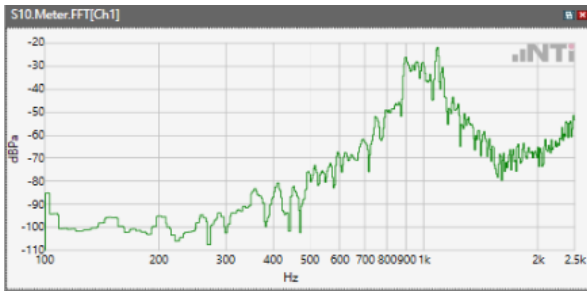
ANSI/TIA 5050-2018 \ 2N HAC ON \ WB 23.85 kbps\ 5.2 Receive path – distortion and noise\ LTE Band 12



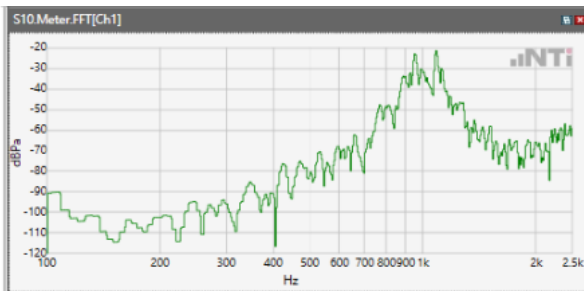
ANSI/TIA 5050-2018 \ 2N HAC ON \ WB 23.85 kbps\ 5.2 Receive path – distortion and noise\ LTE Band 41



ANSI/TIA 5050-2018 \ 2N HAC ON \ WB 23.85 kbps\ 5.2 Receive path – distortion and noise\ LTE Band 66



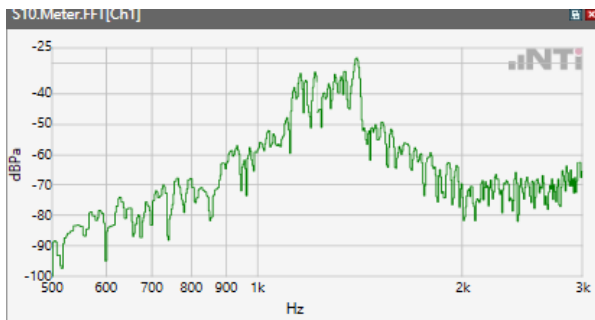
ANSI/TIA 5050-2018 \ 2N HAC ON \ WB 23.85 kbps\ 5.2 Receive path – distortion and noise\ LTE BAND 71



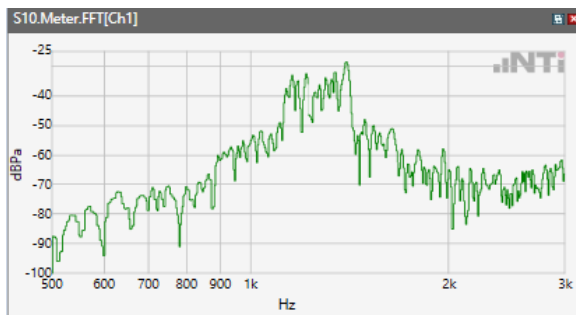


## Receive path - distortion and noise 1250Hz WB&NB

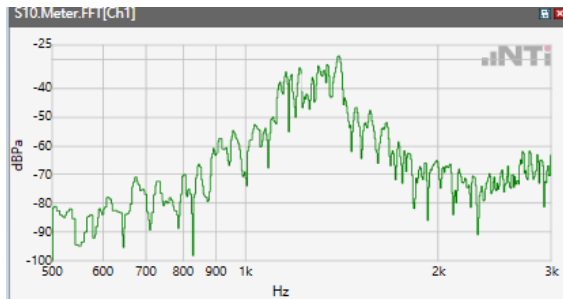
ANSI/TIA 5050-2018 \ 2N HAC ON \ WB 23.85 kbps\ 5.2 Receive path – distortion and noise\  
WCDMA II



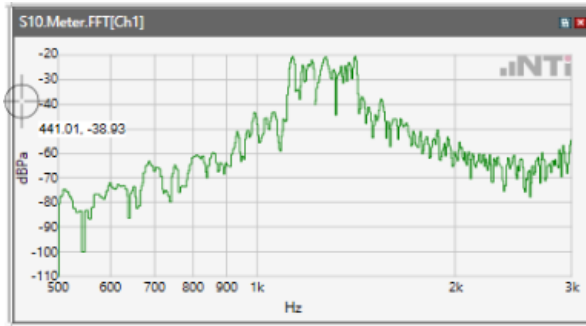
ANSI/TIA 5050-2018 \ 2N HAC ON \ WB 23.85 kbps\ 5.2 Receive path – distortion and noise\  
WCDMA IV



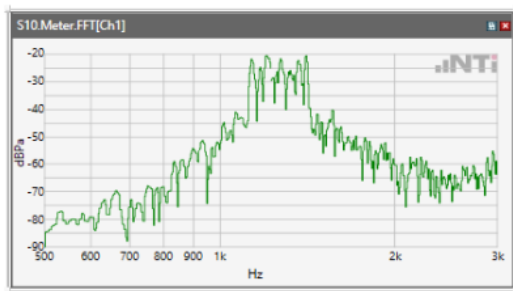
ANSI/TIA 5050-2018 \ 2N HAC ON \ WB 23.85 kbps\ 5.2 Receive path – distortion and noise\  
WCDMA V



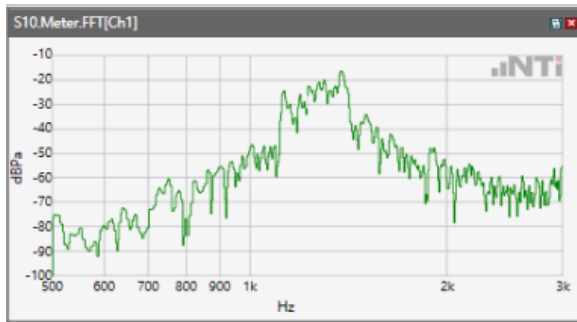
ANSI/TIA 5050-2018 \ 2N HAC ON \ WB 23.85 kbps\ 5.2 Receive path – distortion and noise\ LTE Band 2



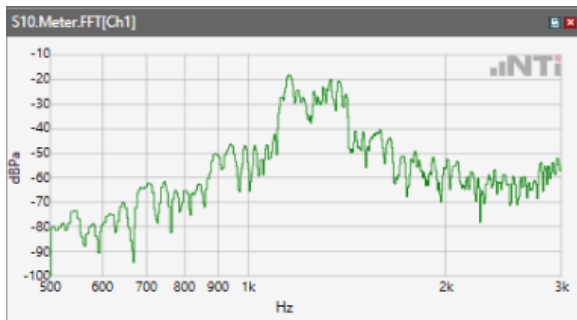
ANSI/TIA 5050-2018 \ 2N HAC ON \ WB 23.85 kbps\ 5.2 Receive path – distortion and noise\ LTE Band 5



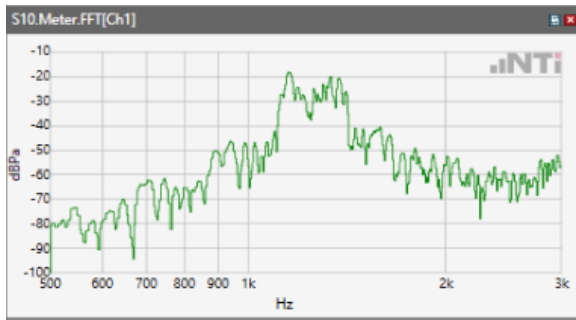
ANSI/TIA 5050-2018 \ 2N HAC ON \ WB 23.85 kbps\ 5.2 Receive path – distortion and noise\ LTE Band 7



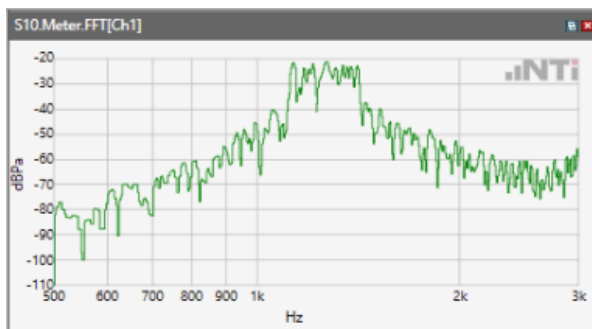
ANSI/TIA 5050-2018 \ 2N HAC ON \ WB 23.85 kbps\ 5.2 Receive path – distortion and noise\ LTE Band 12



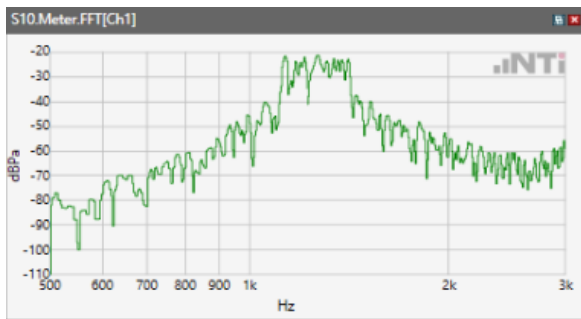
ANSI/TIA 5050-2018 \ 2N HAC ON \ WB 23.85 kbps\ 5.2 Receive path – distortion and noise\ LTE Band 41



ANSI/TIA 5050-2018 \ 2N HAC ON \ WB 23.85 kbps\ 5.2 Receive path – distortion and noise\ LTE Band 66



ANSI/TIA 5050-2018 \ 2N HAC ON \ WB 23.85 kbps\ 5.2 Receive path – distortion and noise\ LTE BAND 71

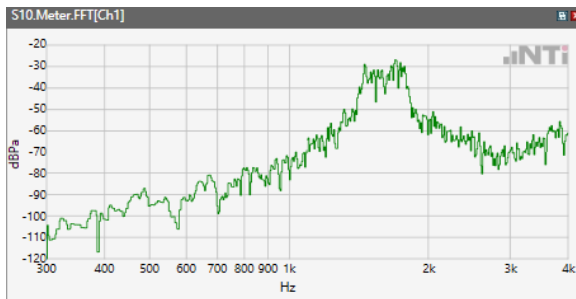


## Receive path - distortion and noise 1600Hz WB&NB

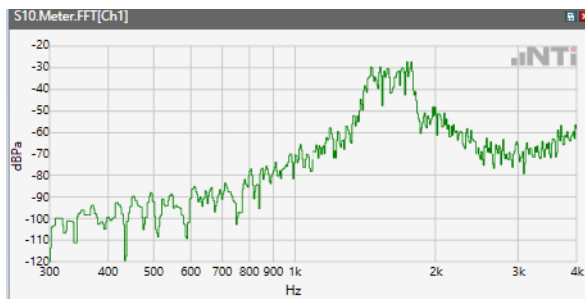
ANSI/TIA 5050-2018 \ 2N HAC ON \ WB 23.85 kbps\ 5.2 Receive path – distortion and noise\ WCDMA II



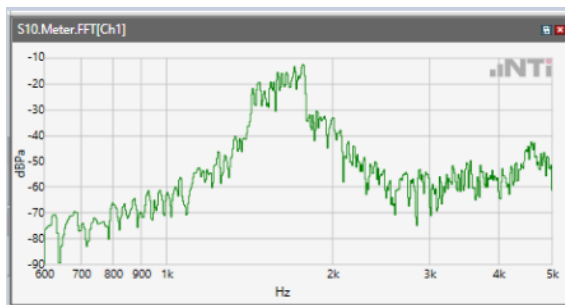
ANSI/TIA 5050-2018 \ 2N HAC ON \ WB 23.85 kbps\ 5.2 Receive path – distortion and noise\ WCDMA IV



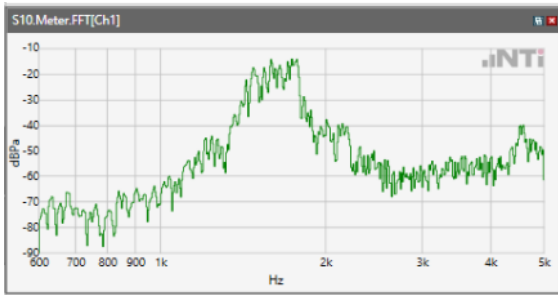
ANSI/TIA 5050-2018 \ 2N HAC ON \ WB 23.85 kbps\ 5.2 Receive path – distortion and noise\ WCDMA V



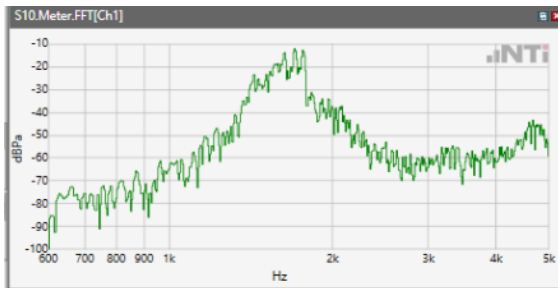
ANSI/TIA 5050-2018 \ 2N HAC ON \ WB 23.85 kbps\ 5.2 Receive path – distortion and noise\ LTE Band 2



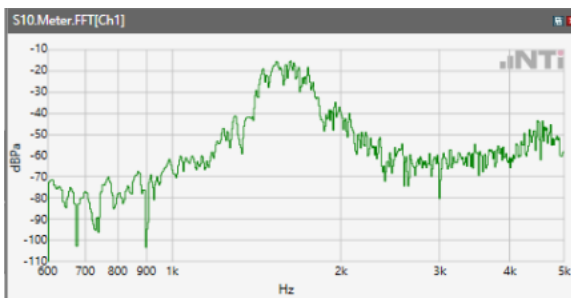
ANSI/TIA 5050-2018 \ 2N HAC ON \ WB 23.85 kbps\ 5.2 Receive path – distortion and noise\ LTE Band 5



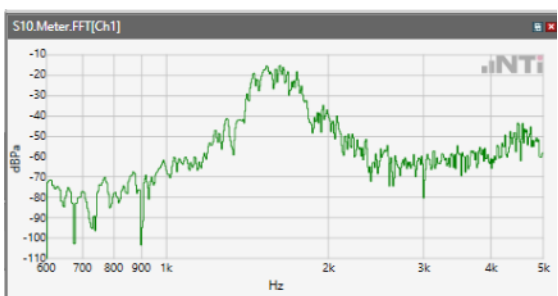
ANSI/TIA 5050-2018 \ 2N HAC ON \ WB 23.85 kbps\ 5.2 Receive path – distortion and noise\ LTE Band 7



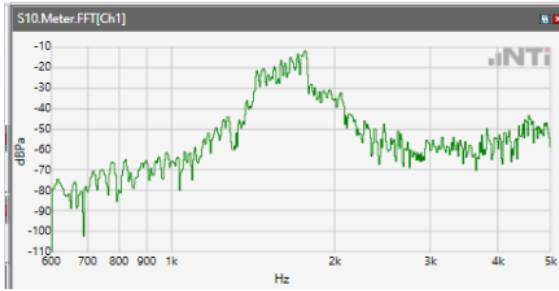
ANSI/TIA 5050-2018 \ 2N HAC ON \ WB 23.85 kbps\ 5.2 Receive path – distortion and noise\ LTE Band 12



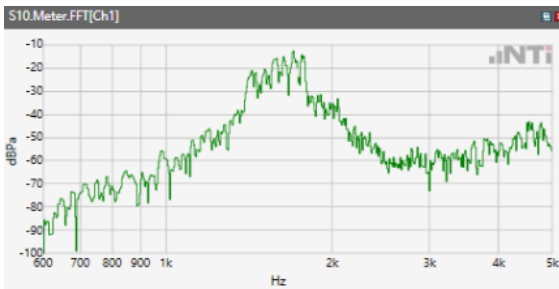
ANSI/TIA 5050-2018 \ 2N HAC ON \ WB 23.85 kbps\ 5.2 Receive path – distortion and noise\ LTE Band 41



ANSI/TIA 5050-2018 \ 2N HAC ON \ WB 23.85 kbps\ 5.2 Receive path – distortion and noise\ LTE Band 66

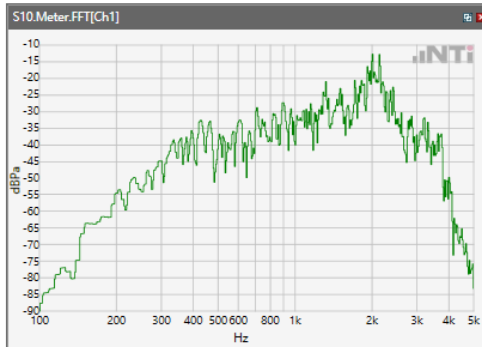


ANSI/TIA 5050-2018 \ 2N HAC ON \ WB 23.85 kbps\ 5.2 Receive path – distortion and noise\ LTE BAND 71

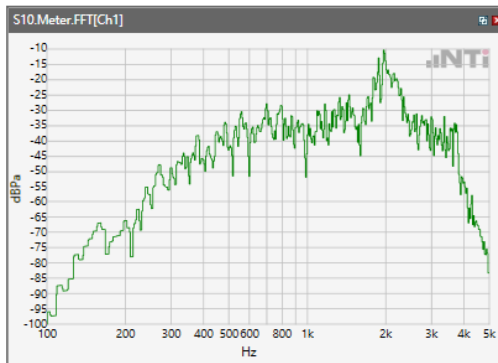


## Receive path - distortion and noise 2000Hz WB&NB

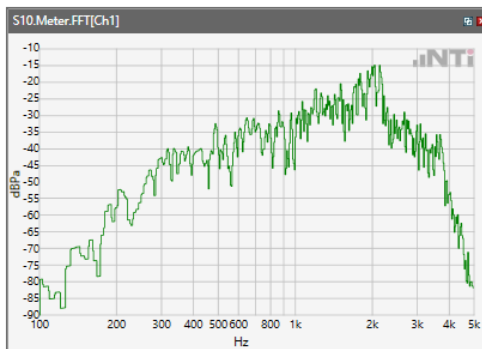
ANSI/TIA 5050-2018 \ 2N HAC ON \ WB 23.85 kbps\ 5.2 Receive path – distortion and noise\  
WCDMA II



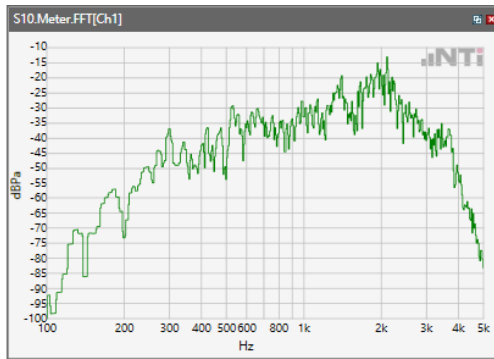
ANSI/TIA 5050-2018 \ 2N HAC ON \ WB 23.85 kbps\ 5.2 Receive path – distortion and noise\  
WCDMA IV



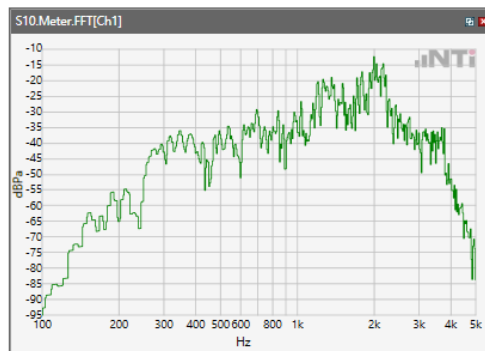
ANSI/TIA 5050-2018 \ 2N HAC ON \ WB 23.85 kbps\ 5.2 Receive path – distortion and noise\  
WCDMA V



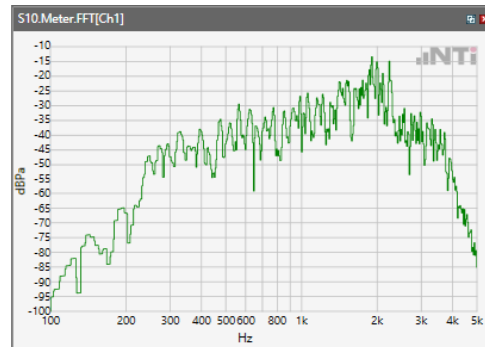
## ANSI/TIA 5050-2018 \ 2N HAC ON \ WB 23.85 kbps\ 5.2 Receive path – distortion and noise\ LTE Band 2



## ANSI/TIA 5050-2018 \ 2N HAC ON \ WB 23.85 kbps\ 5.2 Receive path – distortion and noise\ LTE Band 5

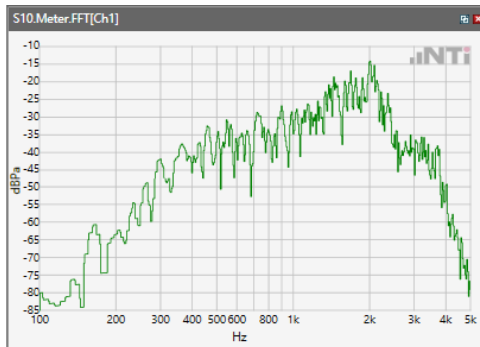


## ANSI/TIA 5050-2018 \ 2N HAC ON \ WB 23.85 kbps\ 5.2 Receive path – distortion and noise\ LTE Band 7

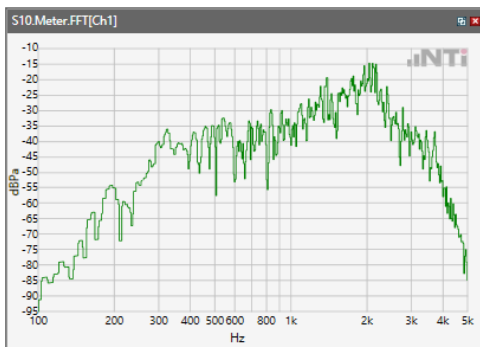




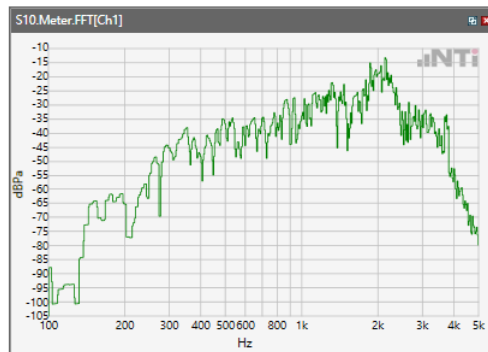
## ANSI/TIA 5050-2018 \ 2N HAC ON \ WB 23.85 kbps\ 5.2 Receive path – distortion and noise\ LTE Band 12



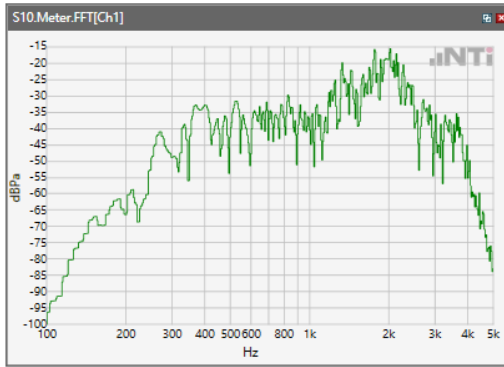
## ANSI/TIA 5050-2018 \ 2N HAC ON \ WB 23.85 kbps\ 5.2 Receive path – distortion and noise\ LTE Band 41



## ANSI/TIA 5050-2018 \ 2N HAC ON \ WB 23.85 kbps\ 5.2 Receive path – distortion and noise\ LTE Band 66

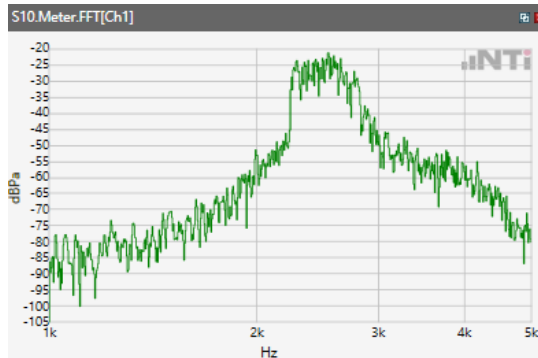


ANSI/TIA 5050-2018 \ 2N HAC ON \ WB 23.85 kbps\ 5.2 Receive path – distortion and noise\ LTE BAND 71

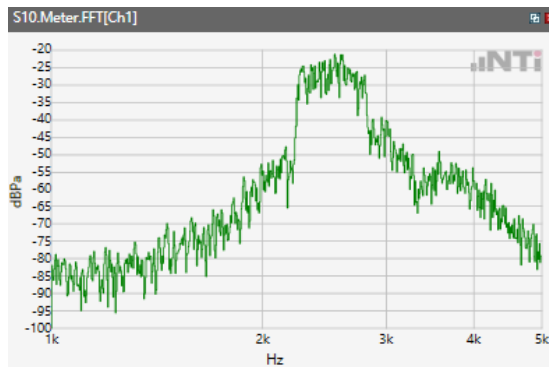


## Receive path - distortion and noise 2500Hz WB&NB

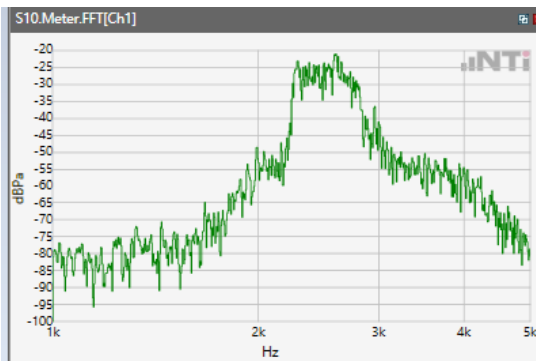
ANSI/TIA 5050-2018 \ 2N HAC ON \ WB 23.85 kbps\ 5.2 Receive path – distortion and noise\  
WCDMA II



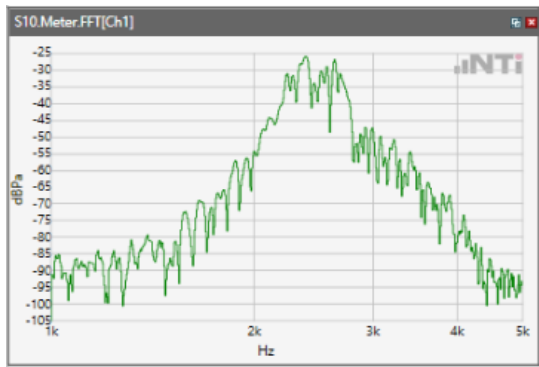
ANSI/TIA 5050-2018 \ 2N HAC ON \ WB 23.85 kbps\ 5.2 Receive path – distortion and noise\  
WCDMA IV



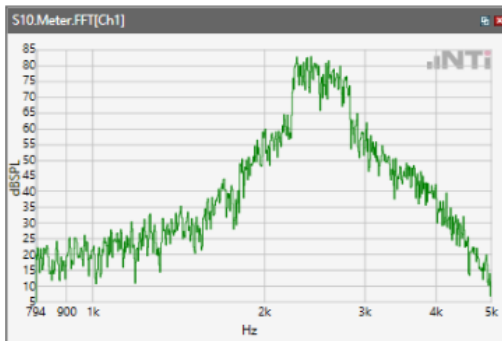
ANSI/TIA 5050-2018 \ 2N HAC ON \ WB 23.85 kbps\ 5.2 Receive path – distortion and noise\  
WCDMA V



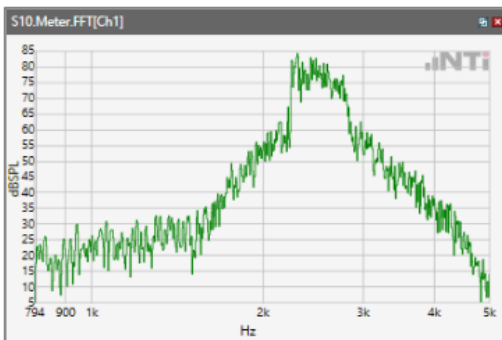
ANSI/TIA 5050-2018 \ 2N HAC ON \ WB 23.85 kbps\ 5.2 Receive path – distortion and noise\ LTE Band 2



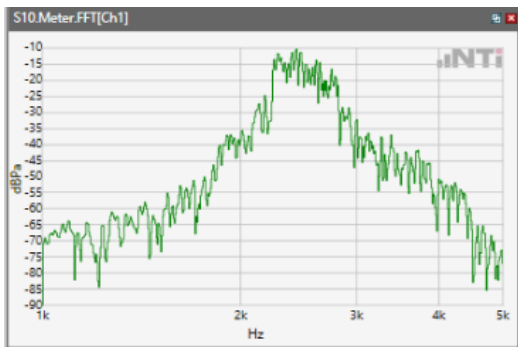
ANSI/TIA 5050-2018 \ 2N HAC ON \ WB 23.85 kbps\ 5.2 Receive path – distortion and noise\ LTE Band 5



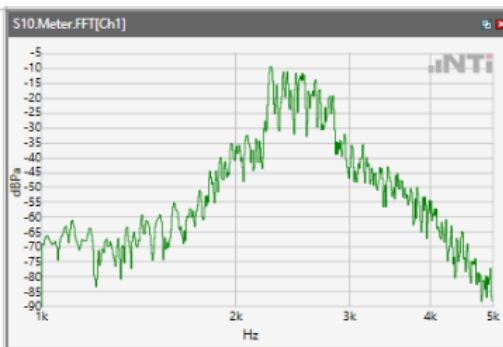
ANSI/TIA 5050-2018 \ 2N HAC ON \ WB 23.85 kbps\ 5.2 Receive path – distortion and noise\ LTE Band 7



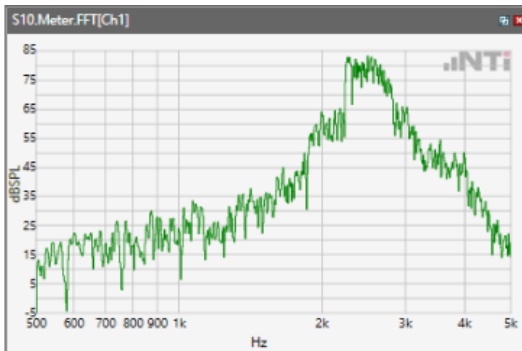
ANSI/TIA 5050-2018 \ 2N HAC ON \ WB 23.85 kbps\ 5.2 Receive path – distortion and noise\ LTE Band 12



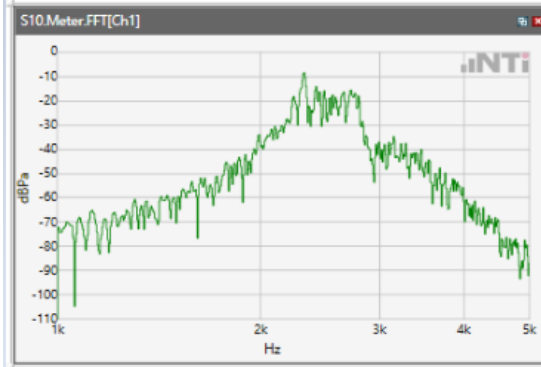
ANSI/TIA 5050-2018 \ 2N HAC ON \ WB 23.85 kbps\ 5.2 Receive path – distortion and noise\ LTE Band 41



ANSI/TIA 5050-2018 \ 2N HAC ON \ WB 23.85 kbps\ 5.2 Receive path – distortion and noise\ LTE Band 66

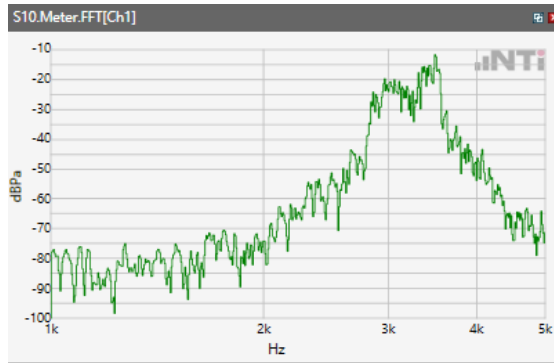


ANSI/TIA 5050-2018 \ 2N HAC ON \ WB 23.85 kbps\ 5.2 Receive path – distortion and noise\ LTE BAND 71

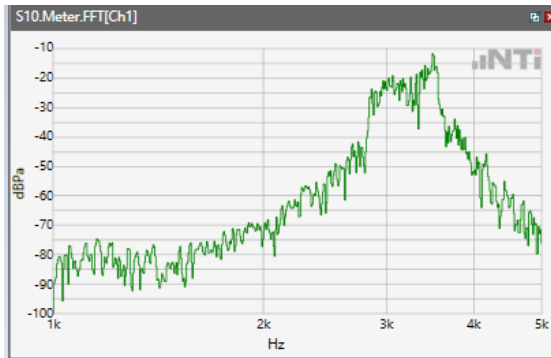


## Receive path - distortion and noise 3150Hz WB&NB

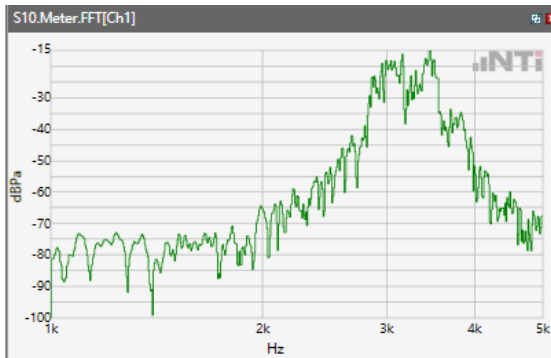
ANSI/TIA 5050-2018 \ 2N HAC ON \ WB 23.85 kbps\ 5.2 Receive path – distortion and noise\  
WCDMA II



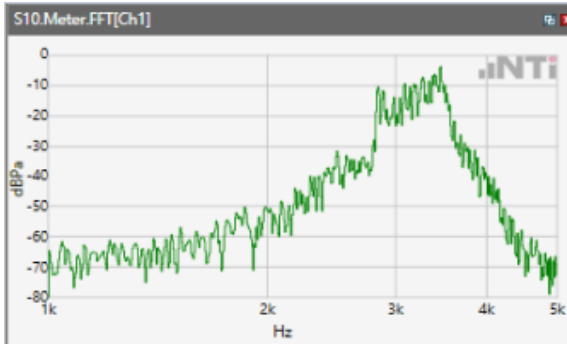
ANSI/TIA 5050-2018 \ 2N HAC ON \ WB 23.85 kbps\ 5.2 Receive path – distortion and noise\  
WCDMA IV



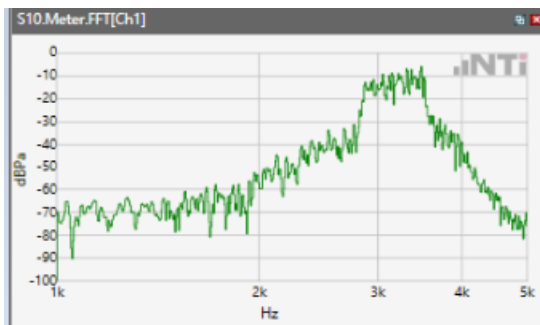
ANSI/TIA 5050-2018 \ 2N HAC ON \ WB 23.85 kbps\ 5.2 Receive path – distortion and noise\  
WCDMA V



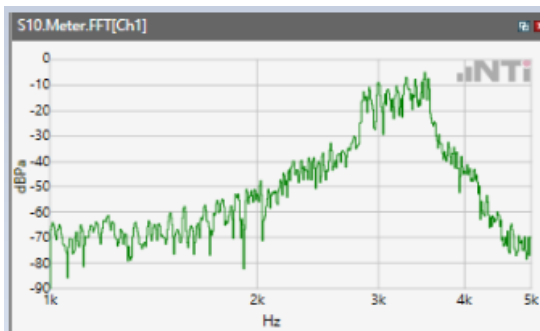
ANSI/TIA 5050-2018 \ 2N HAC ON \ WB 23.85 kbps\ 5.2 Receive path – distortion and noise\ LTE Band 2



ANSI/TIA 5050-2018 \ 2N HAC ON \ WB 23.85 kbps\ 5.2 Receive path – distortion and noise\ LTE Band 5

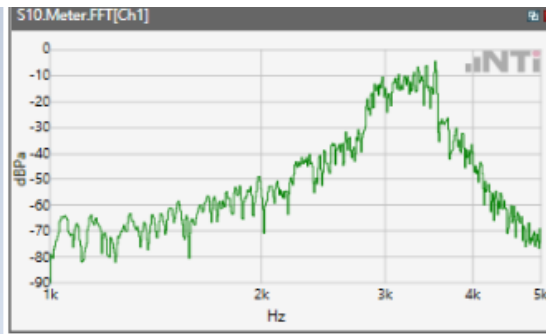


ANSI/TIA 5050-2018 \ 2N HAC ON \ WB 23.85 kbps\ 5.2 Receive path – distortion and noise\ LTE Band 7

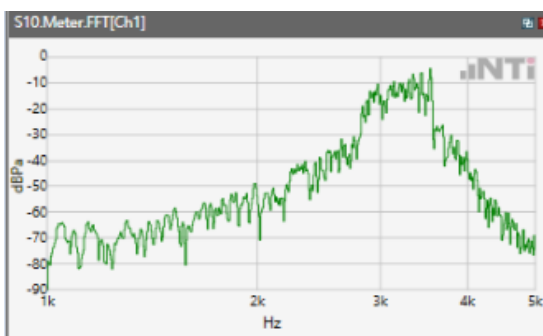




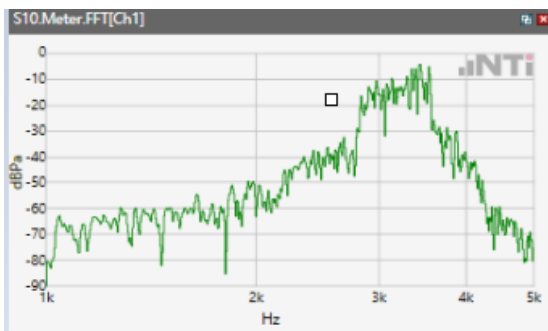
ANSI/TIA 5050-2018 \ 2N HAC ON \ WB 23.85 kbps\ 5.2 Receive path – distortion and noise\ LTE Band 12



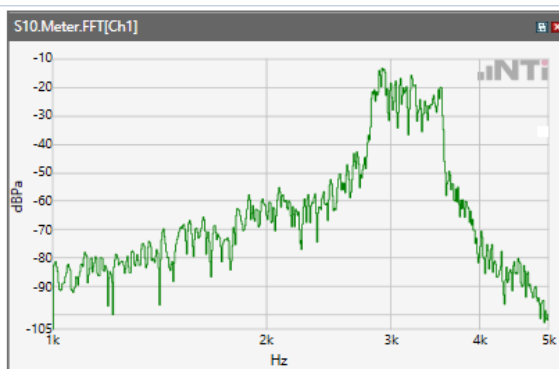
ANSI/TIA 5050-2018 \ 2N HAC ON \ WB 23.85 kbps\ 5.2 Receive path – distortion and noise\ LTE Band 41



ANSI/TIA 5050-2018 \ 2N HAC ON \ WB 23.85 kbps\ 5.2 Receive path – distortion and noise\ LTE Band 66

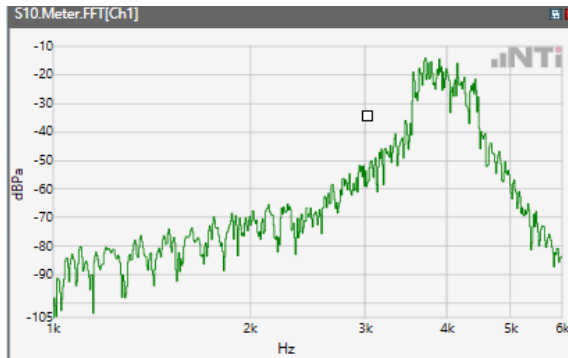


ANSI/TIA 5050-2018 \ 2N HAC ON \ WB 23.85 kbps\ 5.2 Receive path – distortion and noise\ LTE BAND 71

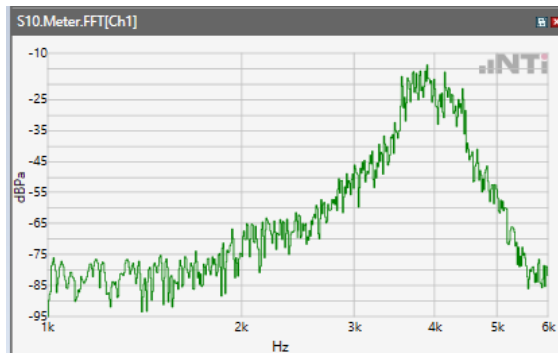


## Receive path - distortion and noise 4000Hz WB only

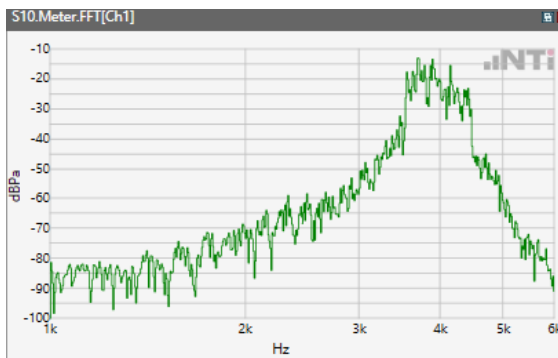
ANSI/TIA 5050-2018 \ 2N HAC ON \ WB 23.85 kbps\ 5.2 Receive path – distortion and noise\  
WCDMA II



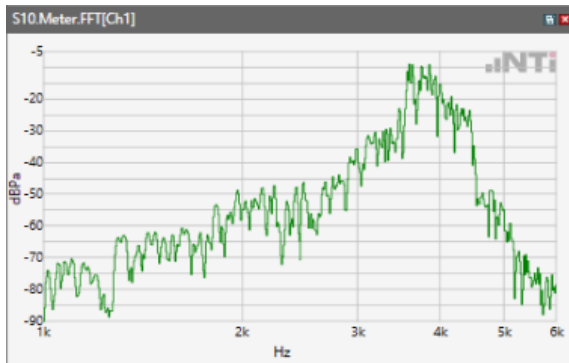
ANSI/TIA 5050-2018 \ 2N HAC ON \ WB 23.85 kbps\ 5.2 Receive path – distortion and noise\  
WCDMA IV



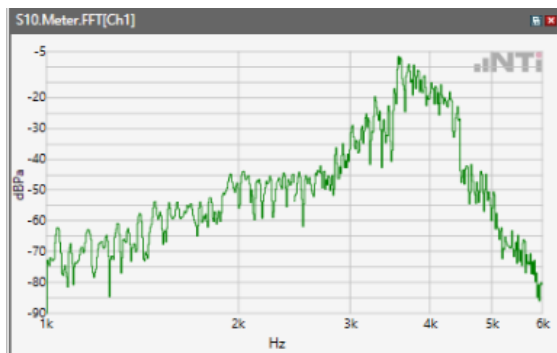
ANSI/TIA 5050-2018 \ 2N HAC ON \ WB 23.85 kbps\ 5.2 Receive path – distortion and noise\  
WCDMA V



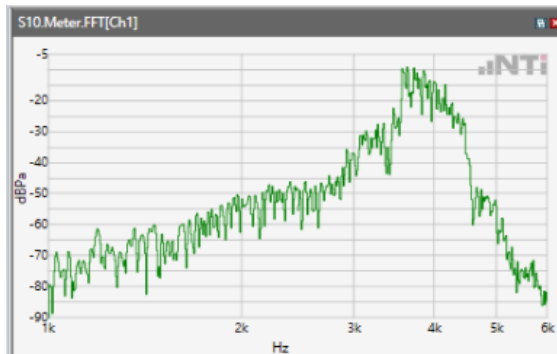
ANSI/TIA 5050-2018 \ 2N HAC ON \ WB 23.85 kbps\ 5.2 Receive path – distortion and noise\ LTE Band 2



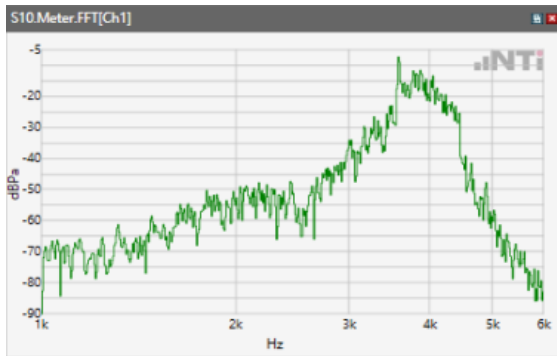
ANSI/TIA 5050-2018 \ 2N HAC ON \ WB 23.85 kbps\ 5.2 Receive path – distortion and noise\ LTE Band 5



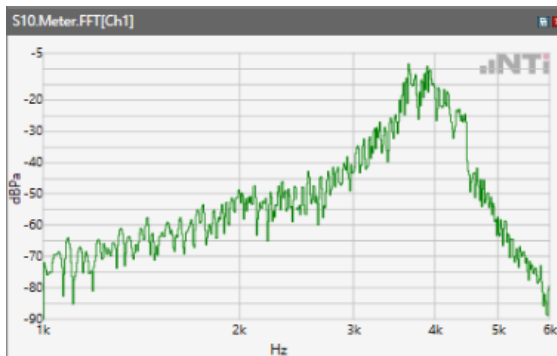
ANSI/TIA 5050-2018 \ 2N HAC ON \ WB 23.85 kbps\ 5.2 Receive path – distortion and noise\ LTE Band 7



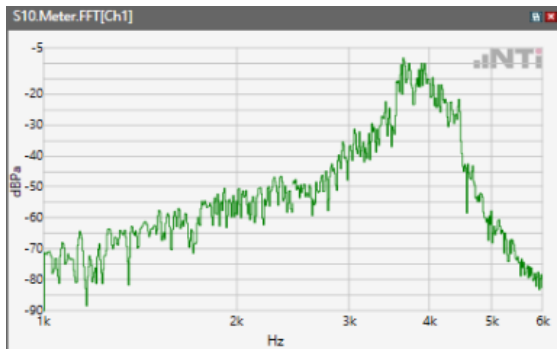
ANSI/TIA 5050-2018 \ 2N HAC ON \ WB 23.85 kbps\ 5.2 Receive path – distortion and noise\ LTE Band 12



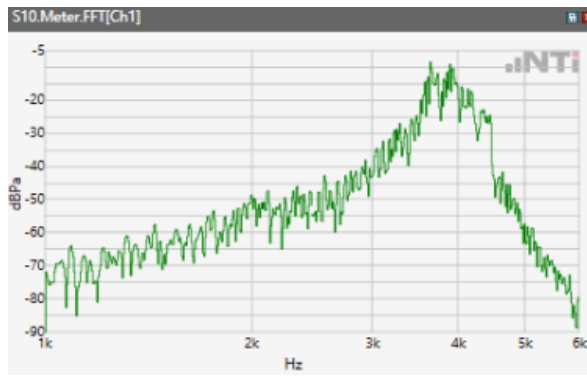
ANSI/TIA 5050-2018 \ 2N HAC ON \ WB 23.85 kbps\ 5.2 Receive path – distortion and noise\ LTE Band 41



ANSI/TIA 5050-2018 \ 2N HAC ON \ WB 23.85 kbps\ 5.2 Receive path – distortion and noise\ LTE Band 66

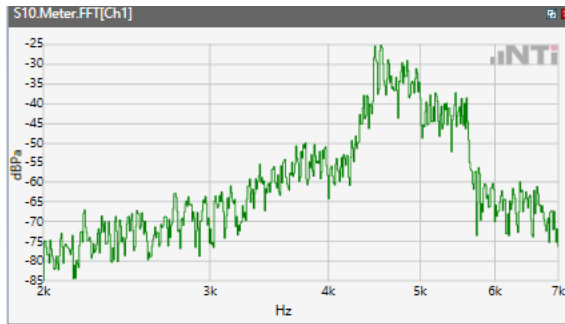


ANSI/TIA 5050-2018 \ 2N HAC ON \ WB 23.85 kbps\ 5.2 Receive path – distortion and noise\ LTE BAND 71

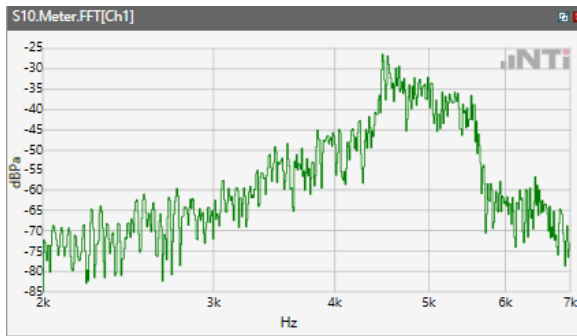


## Receive path - distortion and noise 5000Hz WB only

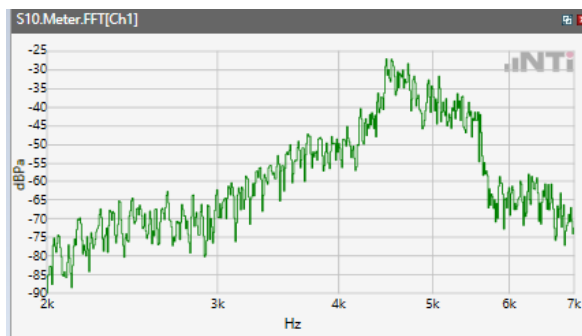
ANSI/TIA 5050-2018 \ 2N HAC ON \ WB 23.85 kbps\ 5.2 Receive path – distortion and noise\ WCDMA II



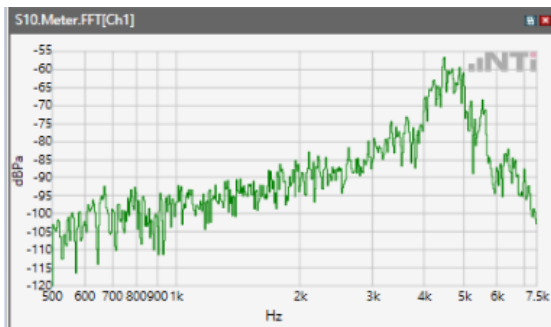
ANSI/TIA 5050-2018 \ 2N HAC ON \ WB 23.85 kbps\ 5.2 Receive path – distortion and noise\ WCDMA IV



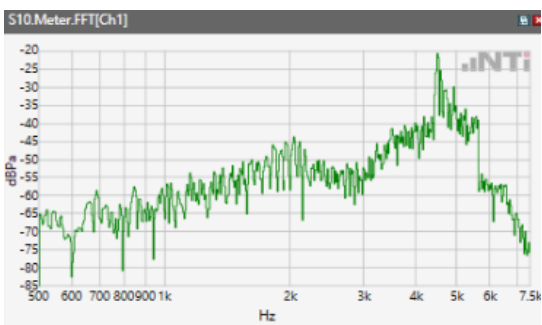
ANSI/TIA 5050-2018 \ 2N HAC ON \ WB 23.85 kbps\ 5.2 Receive path – distortion and noise\ WCDMA V



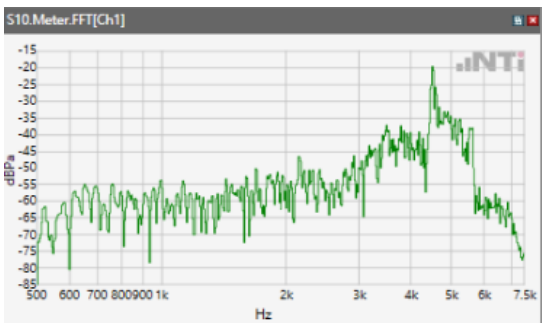
ANSI/TIA 5050-2018 \ 2N HAC ON \ WB 23.85 kbps\ 5.2 Receive path – distortion and noise\ LTE Band 2



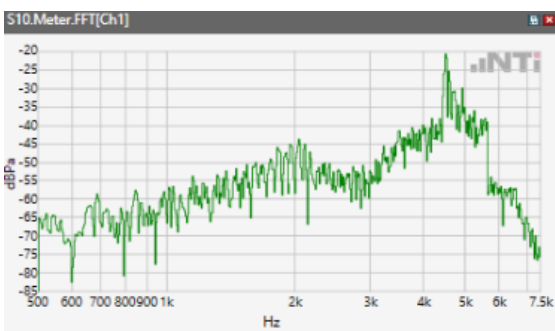
ANSI/TIA 5050-2018 \ 2N HAC ON \ WB 23.85 kbps\ 5.2 Receive path – distortion and noise\ LTE Band 5



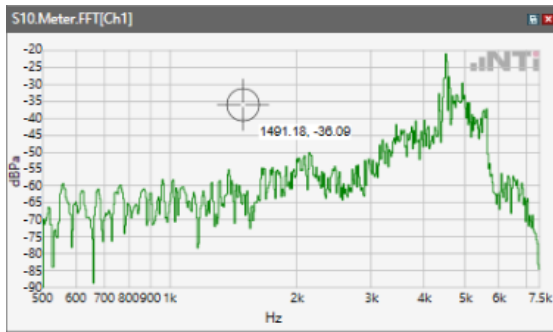
ANSI/TIA 5050-2018 \ 2N HAC ON \ WB 23.85 kbps\ 5.2 Receive path – distortion and noise\ LTE Band 7



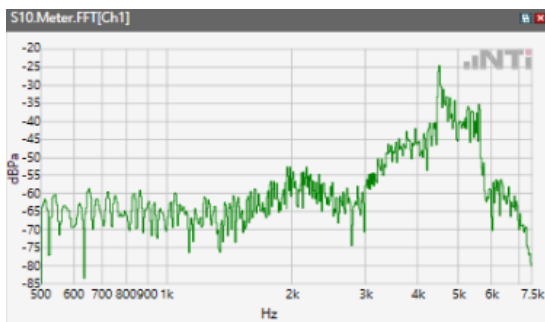
ANSI/TIA 5050-2018 \ 2N HAC ON \ WB 23.85 kbps\ 5.2 Receive path – distortion and noise\ LTE Band 12



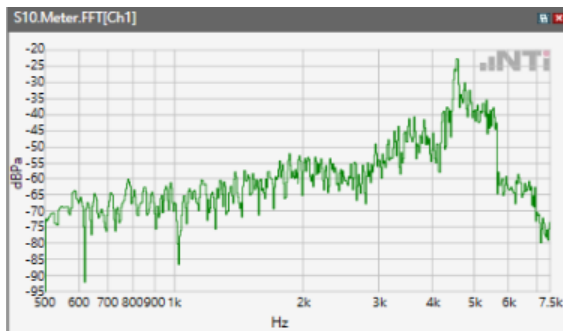
ANSI/TIA 5050-2018 \ 2N HAC ON \ WB 23.85 kbps\ 5.2 Receive path – distortion and noise\ LTE Band 41



ANSI/TIA 5050-2018 \ 2N HAC ON \ WB 23.85 kbps\ 5.2 Receive path – distortion and noise\ LTE Band 66



ANSI/TIA 5050-2018 \ 2N HAC ON \ WB 23.85 kbps\ 5.2 Receive path – distortion and noise\ LTE BAND 71



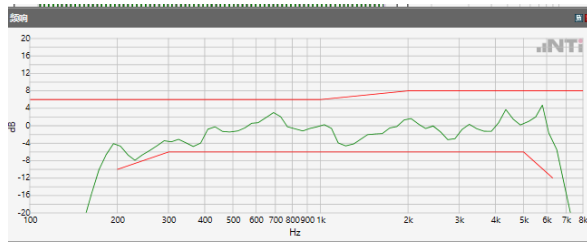


## **5.2 Receive path – distortion and noise**

The distortion and noise test results data are referred to Annex C.

### 5.3 Receive Acoustic Frequency response Performance

ANSI/TIA 5050-2018 \ 2N HAC ON \ WB 23.85 kbps \ WCDMA Band II



Absolute minimal distance

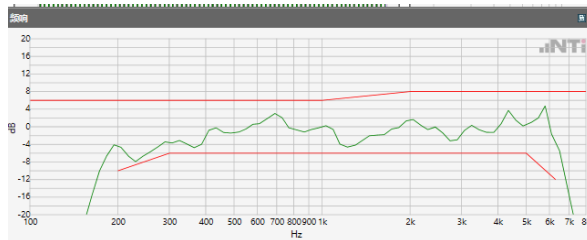
OK

OK

**Limits**

	<b>lower</b>
Run 1	Fit into tolerance

ANSI/TIA 5050-2018 \ 2N HAC ON \ WB 23.85 kbps \ WCDMA Band IV



Absolute minimal distance

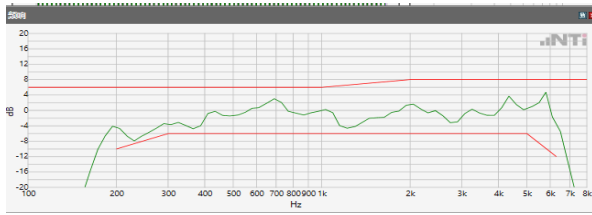
OK

OK

**Limits**

	<b>lower</b>
Run 1	Fit into tolerance

ANSI/TIA 5050-2018 \ 2N HAC ON \ WB 23.85 kbps \ WCDMA Band V



Absolute minimal distance

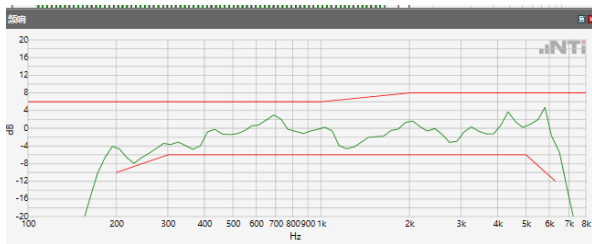
OK

OK

Limits

	<b>lower</b>
Run 1	Fit into tolerance

ANSI/TIA 5050-2018 \ 2N HAC ON \ WB 23.85 kbps \ LTE Band 2



Absolute minimal distance

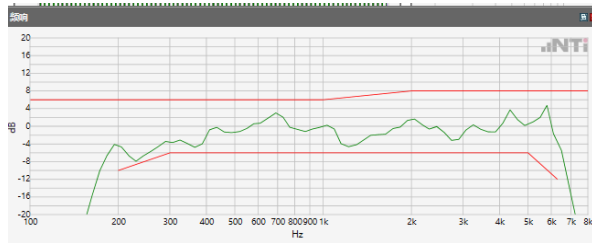
OK

OK

Limits

	<b>lower</b>
Run 1	Fit into tolerance

ANSI/TIA 5050-2018 \ 2N HAC ON \ WB 23.85 kbps \ LTE Band 5



Absolute minimal distance

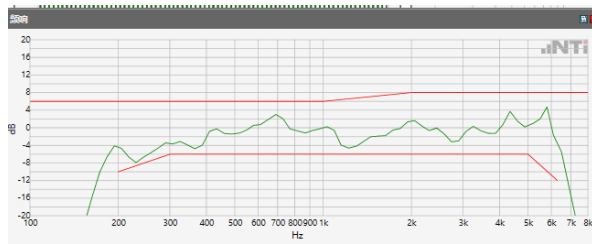
OK

OK

Limits

	<b>lower</b>
Run 1	Fit into tolerance

ANSI/TIA 5050-2018 \ 2N HAC ON \ WB 23.85 kbps \ LTE Band 7



Absolute minimal distance

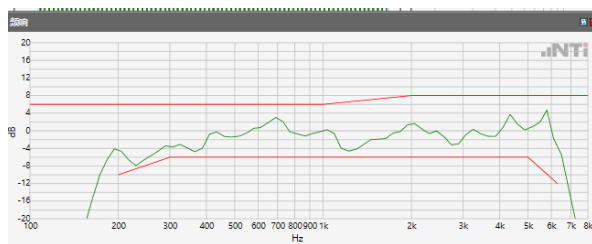
OK

OK

Limits

	<b>lower</b>
Run 1	Fit into tolerance

ANSI/TIA 5050-2018 \ 2N HAC ON \ WB 23.85 kbps \ LTE Band 12



Absolute minimal distance

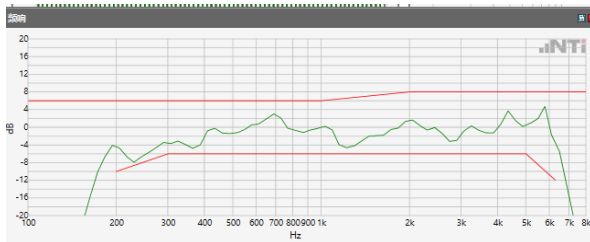
OK

OK

Limits

	<b>lower</b>
Run 1	Fit into tolerance

ANSI/TIA 5050-2018 \ 2N HAC ON \ WB 23.85 kbps \ LTE Band 41



Absolute minimal distance

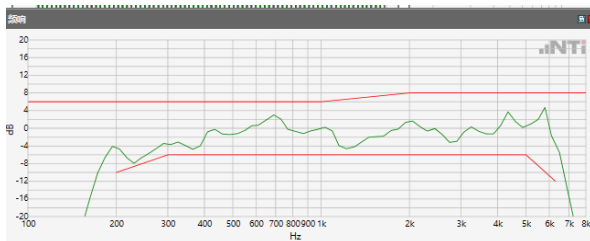
OK

OK

Limits

	<b>lower</b>
Run 1	Fit into tolerance

ANSI/TIA 5050-2018 \ 2N HAC ON \ WB 23.85 kbps \ LTE Band 66



Absolute minimal distance

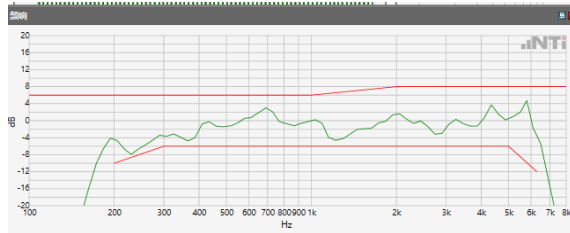
OK

OK

## Limits

	lower
Run 1	Fit into tolerance

ANSI/TIA 5050-2018 \ 2N HAC ON \ WB 23.85 kbps \ LTE BAND 71



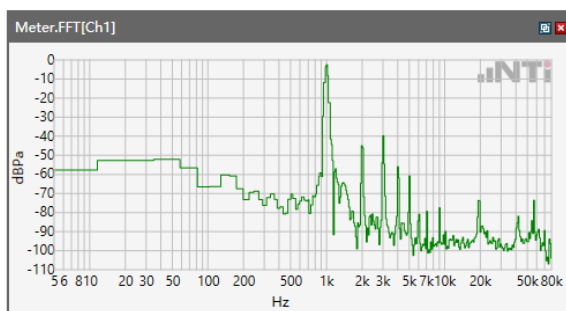
Absolute minimal distance

OK

OK

## 5.1 Receive Volume Control Performance 2N---EVS NB

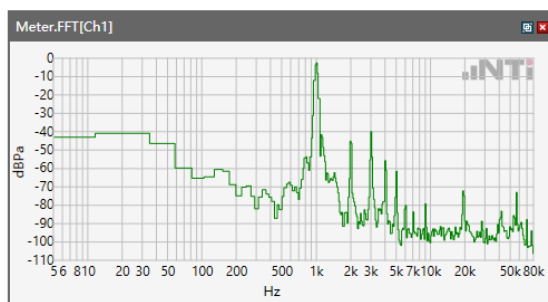
ANSI/TIA 5050-2018 \ 2N HAC ON \ EVS NB 24.4 kbps\LTE Band 2



Speech Level RCV: 91.84 dB[SPL]

Calculated Value: 21.84 dB Ok

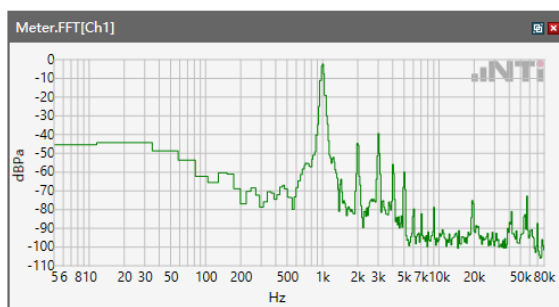
ANSI/TIA 5050-2018 \ 2N HAC ON \ EVS NB 24.4 kbps\LTE Band 5



Speech Level RCV: 91.03 dB[SPL]

Calculated Value: 21.03 dB Ok

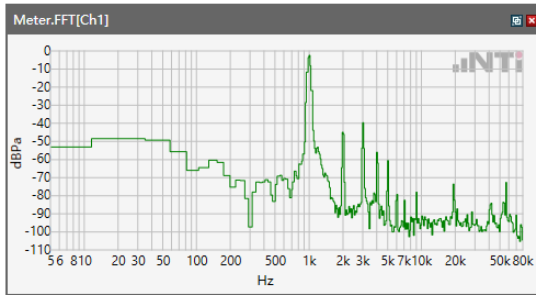
ANSI/TIA 5050-2018 \ 2N HAC ON \ EVS NB 24.4 kbps\LTE Band 7



Speech Level RCV: 91.42 dB[SPL]

Calculated Value: 21.42 dB Ok

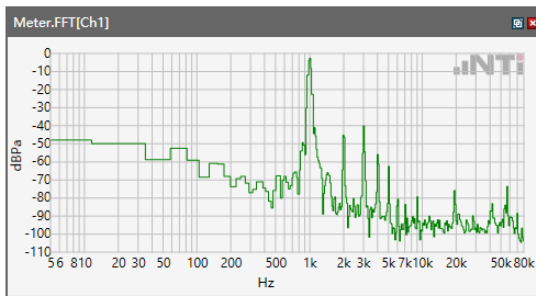
ANSI/TIA 5050-2018 \ 2N HAC ON \ EVS NB 24.4 kbps\LTE Band 12



Speech Level RCV: 91.65 dB[SPL]

Calculated Value: 21.65 dB Ok

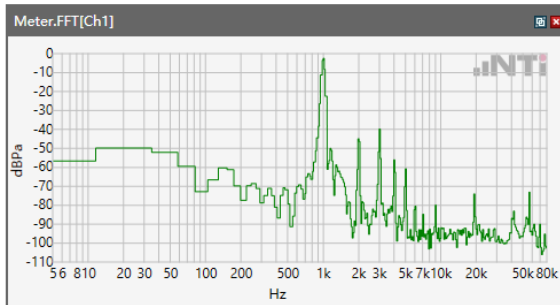
ANSI/TIA 5050-2018 \ 2N HAC ON \ EVS NB 24.4 kbps\LTE Band 41



Speech Level RCV: 91.62 dB[SPL]

Calculated Value: 21.62 dB Ok

ANSI/TIA 5050-2018 \ 2N HAC ON \ EVS NB 24.4 kbps\LTE Band 66

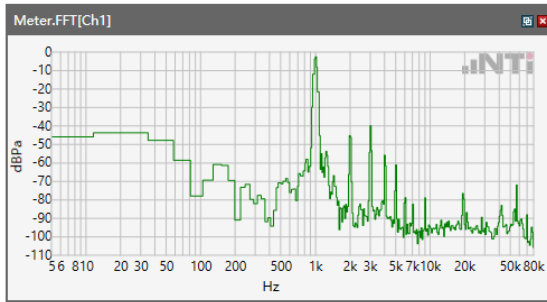


Speech Level RCV: 91.26 dB[SPL]

Calculated Value: 21.26 dB Ok



ANSI/TIA 5050-2018 \ 2N HAC ON \ EVS NB 24.4 kbps\LTE BAND 71



Speech Level RCV: 91.55 dB[SPL]

Calculated Value: 21.55 dB Ok