



REPORT No.: SZ25030003S03

Annex D Test Results of Volume Control

Measurement Protocol

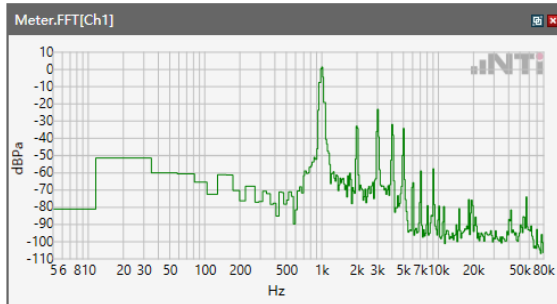
Project	SZ25030003 of TIA 5050 v1
---------	---------------------------

5.1 Receive Volume Control Performance 8N---NB	4
Receive path - distortion and noise 400Hz WB&NB.....	8
Receive path - distortion and noise 500Hz WB&NB.....	12
Receive path - distortion and noise 630Hz WB&NB.....	16
Receive path - distortion and noise 800Hz WB&NB.....	20
Receive path - distortion and noise 1000Hz WB&NB.....	24
Receive path - distortion and noise 1250Hz WB&NB.....	27
Receive path - distortion and noise 1600Hz WB&NB.....	30
Receive path - distortion and noise 2000Hz WB&NB.....	33
Receive path - distortion and noise 2500Hz WB&NB.....	37
Receive path - distortion and noise 3150Hz WB&NB.....	41
5.2 Receive path – distortion and noise.....	45
5.3 Receive Acoustic Frequency response Performance.....	46
5.1 Receive Volume Control Performance 8N---WB	52
Receive path - distortion and noise 250 WB only.....	56
Receive path - distortion and noise 315Hz WB only	59
Receive path - distortion and noise 400Hz WB&NB.....	63
Receive path - distortion and noise 500Hz WB&NB.....	67
Receive path - distortion and noise 630Hz WB&NB.....	71
Receive path - distortion and noise 800Hz WB&NB.....	75
Receive path - distortion and noise 1000Hz WB&NB.....	78
Receive path - distortion and noise 1250Hz WB&NB.....	81
Receive path - distortion and noise 1600Hz WB&NB.....	84
Receive path - distortion and noise 2000Hz WB&NB.....	87
Receive path - distortion and noise 2500Hz WB&NB.....	91
Receive path - distortion and noise 3150Hz WB&NB.....	95
Receive path - distortion and noise 4000Hz WB only	98
Receive path - distortion and noise 5000Hz WB only	102
5.2 Receive path – distortion and noise.....	105
5.3 Receive Acoustic Frequency response Performance.....	106
5.1 Receive Volume Control Performance 8N---EVS NB	111
5.1 Receive Volume Control Performance 8N---EVS WB	114
5.1 Receive Volume Control Performance 2N---NB	117
Receive path - distortion and noise 400Hz WB&NB.....	121
Receive path - distortion and noise 500Hz WB&NB.....	125
Receive path - distortion and noise 630Hz WB&NB.....	129
Receive path - distortion and noise 800Hz WB&NB.....	133
Receive path - distortion and noise 1000Hz WB&NB.....	137
Receive path - distortion and noise 1250Hz WB&NB.....	141
Receive path - distortion and noise 1600Hz WB&NB.....	145
Receive path - distortion and noise 2000Hz WB&NB.....	148
Receive path - distortion and noise 2500Hz WB&NB.....	152
Receive path - distortion and noise 3150Hz WB&NB.....	156
5.2 Receive path – distortion and noise.....	160
5.3 Receive Acoustic Frequency response Performance.....	161
5.1 Receive Volume Control Performance 2N---WB	167
Receive path - distortion and noise 250 WB only.....	171
Receive path - distortion and noise 315Hz WB only	174

Receive path - distortion and noise 400Hz WB&NB.....	177
Receive path - distortion and noise 500Hz WB&NB.....	181
Receive path - distortion and noise 630Hz WB&NB.....	185
Receive path - distortion and noise 800Hz WB&NB.....	189
Receive path - distortion and noise 1000Hz WB&NB.....	192
Receive path - distortion and noise 1250Hz WB&NB.....	195
Receive path - distortion and noise 1600Hz WB&NB.....	198
Receive path - distortion and noise 2000Hz WB&NB.....	201
Receive path - distortion and noise 2500Hz WB&NB.....	205
Receive path - distortion and noise 3150Hz WB&NB.....	209
Receive path - distortion and noise 4000Hz WB only	212
Receive path - distortion and noise 5000Hz WB only	216
5.2 Receive path – distortion and noise.....	219
5.3 Receive Acoustic Frequency response Performance.....	220
5.1 Receive Volume Control Performance 2N---EVS NB.....	225
5.1 Receive Volume Control Performance 2N---EVS WB	228

5.1 Receive Volume Control Performance 8N---NB

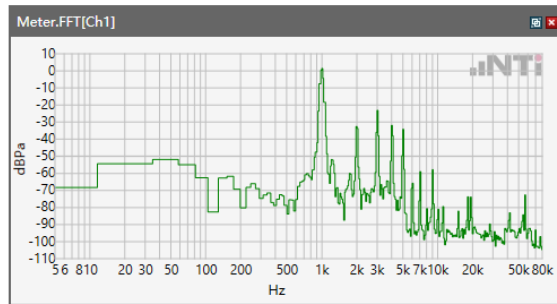
ANSI/TIA 5050-2018 \ 8N HAC OFF \ NB 12.2kbps\GSM 850



Speech Level RCV: 97.11 dB[SPL]

Calculated Value: 27.11 dB Ok

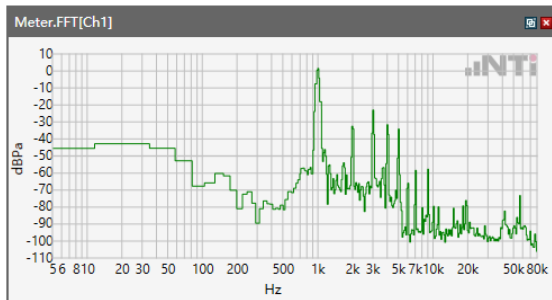
ANSI/TIA 5050-2018 \ 8N HAC OFF \ NB 12.2kbps\GSM 1900



Speech Level RCV: 97.26 dB[SPL]

Calculated Value: 27.26 dB Ok

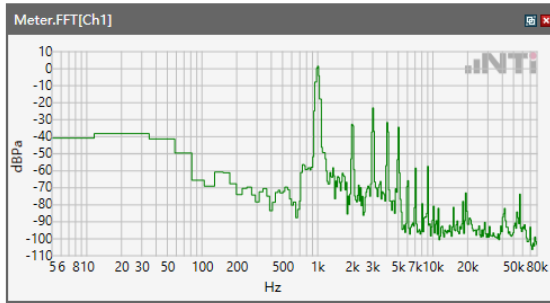
ANSI/TIA 5050-2018 \ 8N HAC OFF \ NB 12.2kbps\WCDMA Band II



Speech Level RCV: 99.04 dB[SPL]

Calculated Value: 29.04 dB Ok

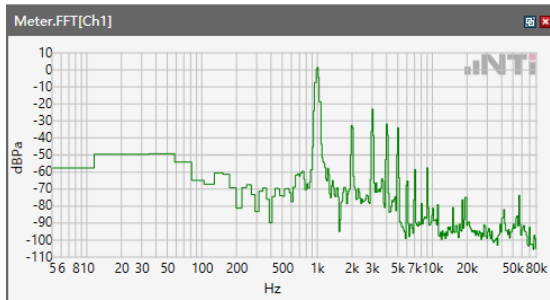
ANSI/TIA 5050-2018 \ 8N HAC OFF \ NB 12.2kbps\WCDMA Band IV



Speech Level RCV: 96.25 dB[SPL]

Calculated Value: 26.25 dB Ok

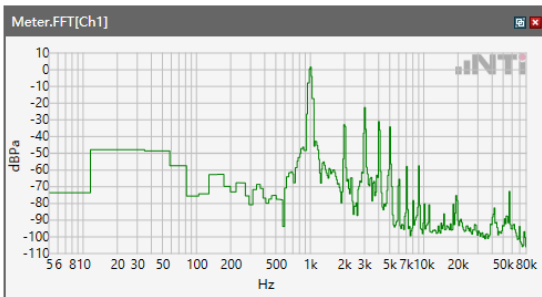
ANSI/TIA 5050-2018 \ 8N HAC OFF \ NB 12.2kbps\WCDMA Band V



Speech Level RCV: 96.14 dB[SPL]

Calculated Value: 26.14 dB Ok

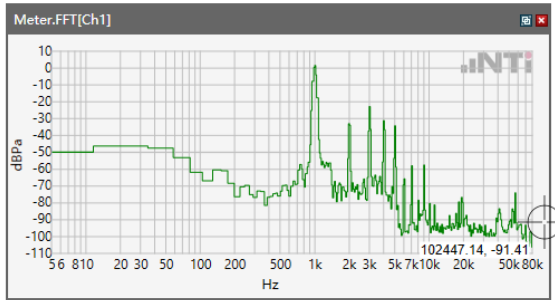
ANSI/TIA 5050-2018 \ 8N HAC OFF \ NB 12.2kbps\LTE Band 2



Speech Level RCV: 99.87 dB[SPL]

Calculated Value: 29.87 dB Ok

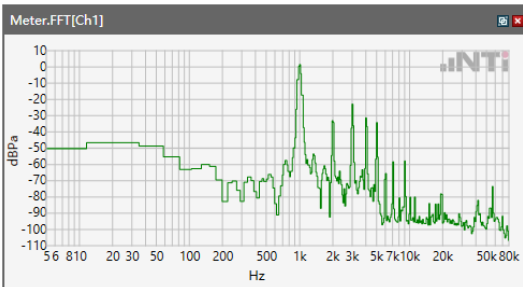
ANSI/TIA 5050-2018 \ 8N HAC OFF \ NB 12.2kbps\LTE Band 5



Speech Level RCV: 95.24 dB[SPL]

Calculated Value: 25.24 dB Ok

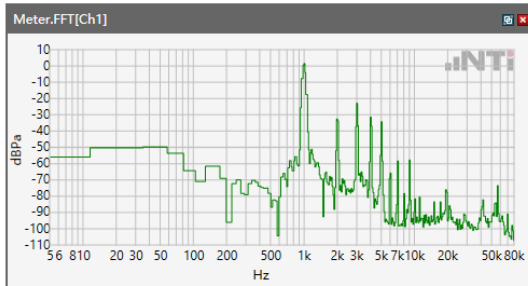
ANSI/TIA 5050-2018 \ 8N HAC OFF \ NB 12.2kbps\LTE Band 7



Speech Level RCV: 94.59 dB[SPL]

Calculated Value: 24.59 dB Ok

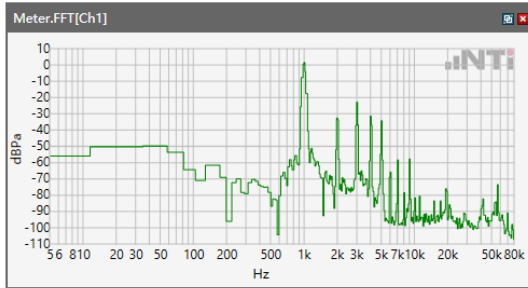
ANSI/TIA 5050-2018 \ 8N HAC OFF \ NB 12.2kbps\ LTE BAND 12



Speech Level RCV: 96.11 dB[SPL]

Calculated Value: 26.11 dB Ok

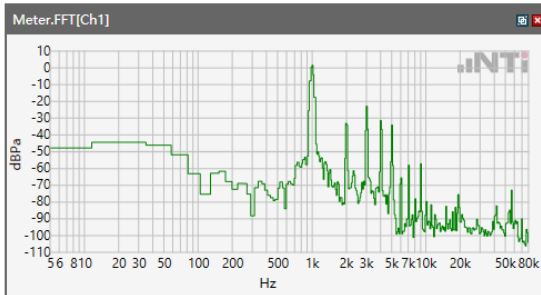
ANSI/TIA 5050-2018 \ 8N HAC OFF \ NB 12.2kbps\ LTE BAND 41



Speech Level RCV:95.34 dB[SPL]

Calculated Value: 25.34dB Ok

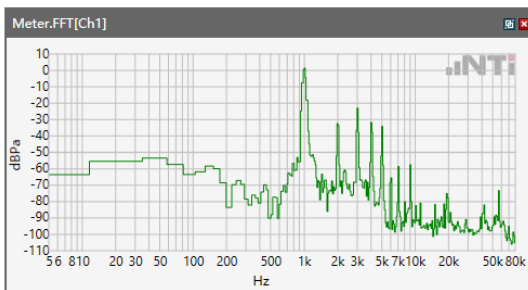
ANSI/TIA 5050-2018 \ 8N HAC OFF \ NB 12.2kbps\ LTE Band 66



Speech Level RCV: 97.12 dB[SPL]

Calculated Value: 27.12 dB Ok

ANSI/TIA 5050-2018 \ 8N HAC OFF \ NB 12.2kbps\ LTE BAND 71

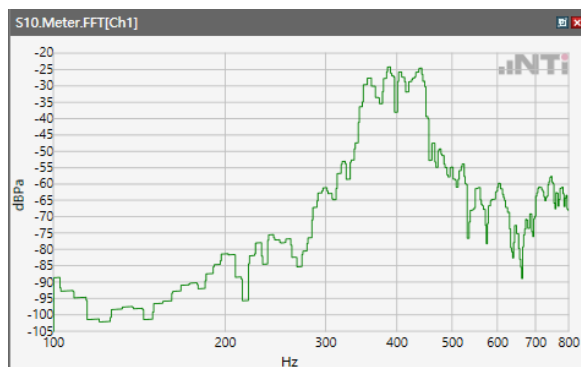


Speech Level RCV: 95.2 dB[SPL]

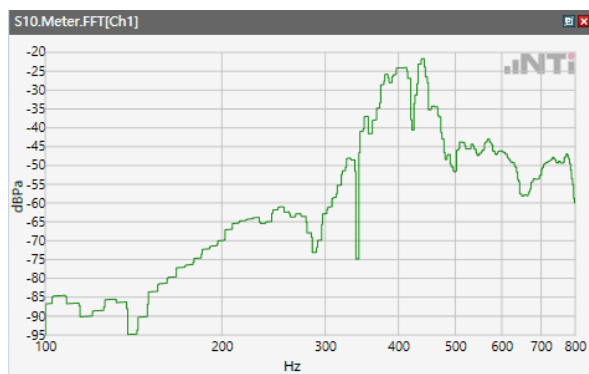
Calculated Value: 25.2 dB Ok

Receive path - distortion and noise 400Hz WB&NB

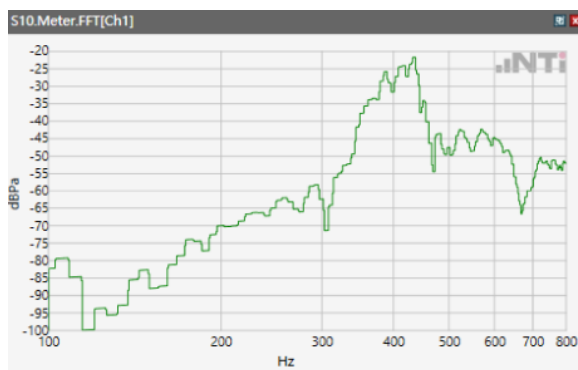
ANSI/TIA 5050-2018 \ 8N HAC OFF \ NB 12.2kbps\ 5.2 Receive path – distortion and noise\GSM 850



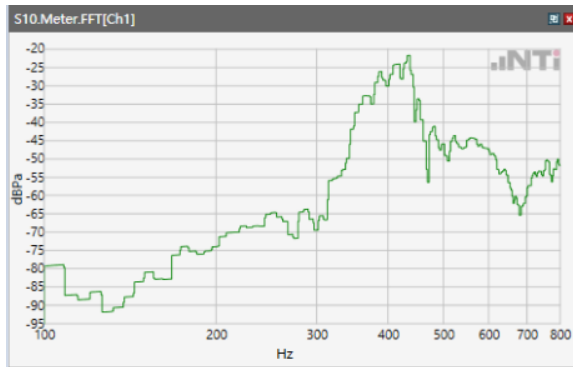
ANSI/TIA 5050-2018 \ 8N HAC OFF \ NB 12.2kbps\ 5.2 Receive path – distortion and noise\GSM 1900



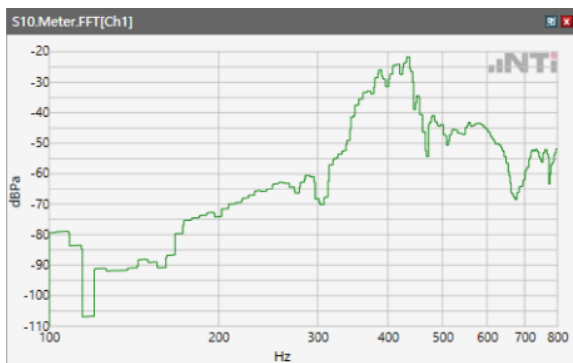
ANSI/TIA 5050-2018 \ 8N HAC OFF \ NB 12.2kbps\ 5.2 Receive path – distortion and noise\WCDMA Band II



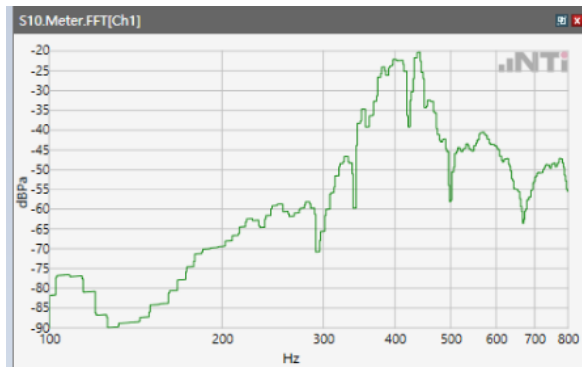
ANSI/TIA 5050-2018 \ 8N HAC OFF \ NB 12.2kbps\ 5.2 Receive path – distortion and noise\WCDMA Band IV



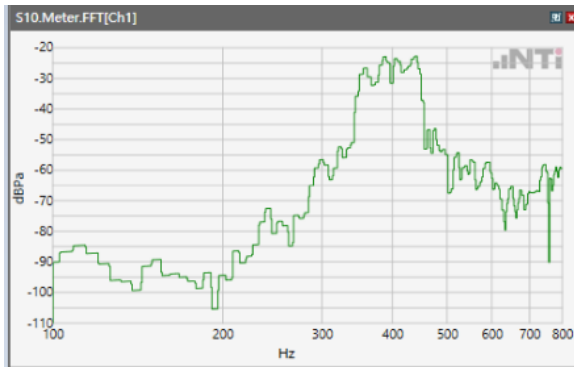
ANSI/TIA 5050-2018 \ 8N HAC OFF \ NB 12.2kbps\ 5.2 Receive path – distortion and noise\WCDMA Band V



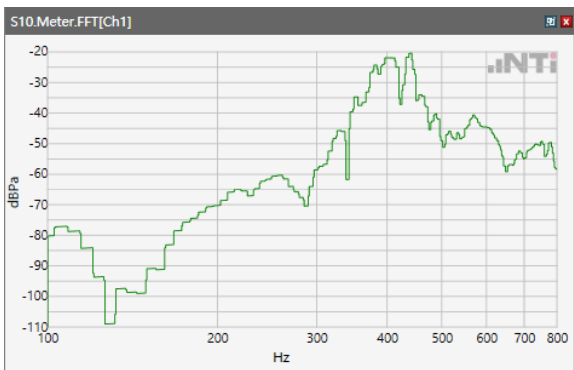
ANSI/TIA 5050-2018 \ 8N HAC OFF \ NB 12.2kbps\ 5.2 Receive path – distortion and noise\LTE Band 2



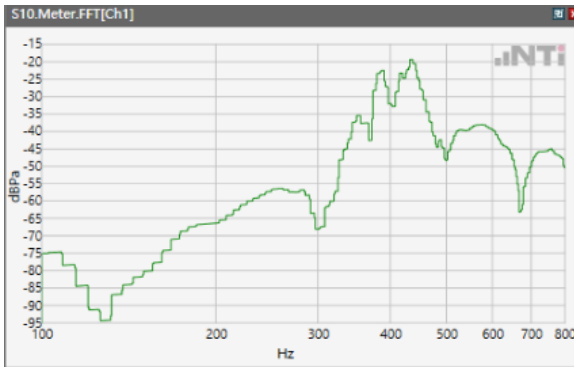
ANSI/TIA 5050-2018 \ 8N HAC OFF \ NB 12.2kbps\ 5.2 Receive path – distortion and noise\LTE Band 5



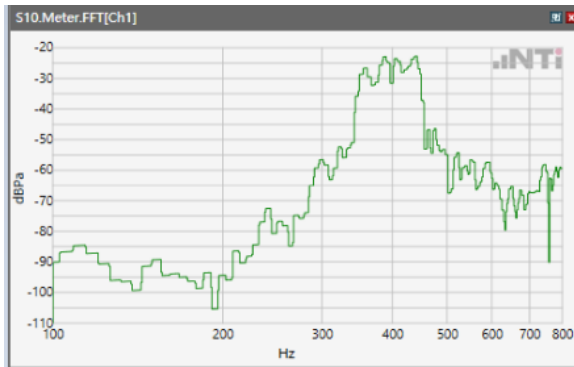
ANSI/TIA 5050-2018 \ 8N HAC OFF \ NB 12.2kbps\ 5.2 Receive path – distortion and noise\LTE Band 7



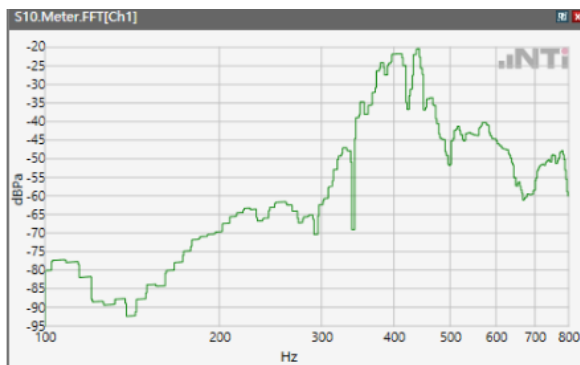
ANSI/TIA 5050-2018 \ 8N HAC OFF \ NB 12.2kbps\ 5.2 Receive path – distortion and noise\ LTE Band 12



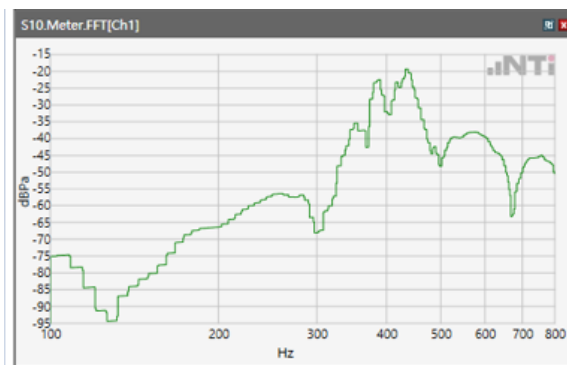
ANSI/TIA 5050-2018 \ 8N HAC OFF \ NB 12.2kbps\ 5.2 Receive path – distortion and noise\LTE Band 41



ANSI/TIA 5050-2018 \ 8N HAC OFF \ NB 12.2kbps\ 5.2 Receive path – distortion and noise\LTE Band 66

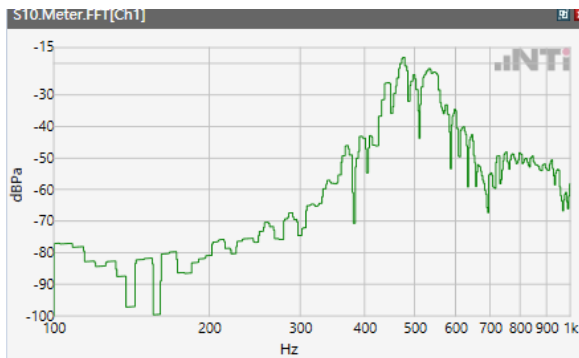


ANSI/TIA 5050-2018 \ 8N HAC OFF \ NB 12.2kbps\ 5.2 Receive path – distortion and noise\ LTE BAND 71

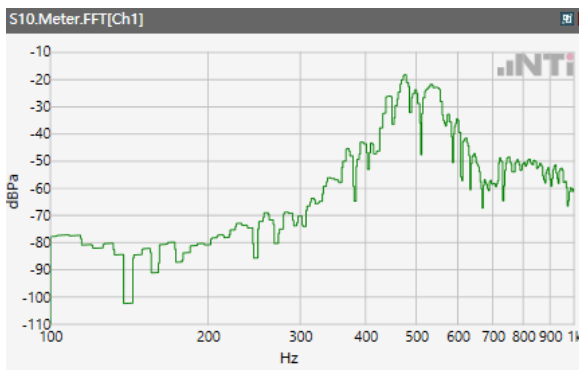


Receive path - distortion and noise 500Hz WB&NB

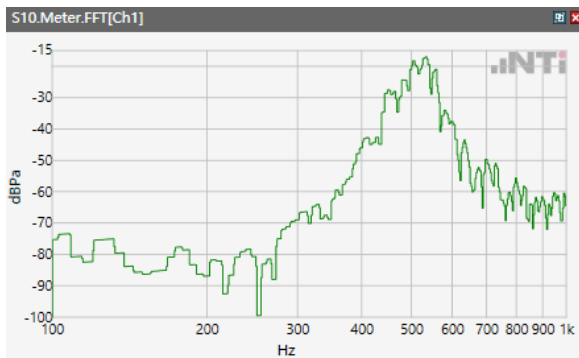
ANSI/TIA 5050-2018 \ 8N HAC OFF \ NB 12.2kbps\ 5.2 Receive path – distortion and noise\GSM 850



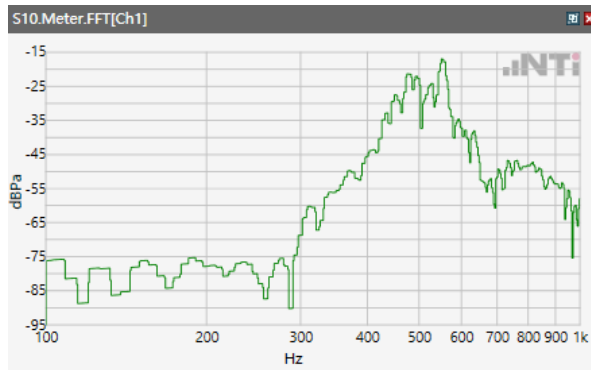
ANSI/TIA 5050-2018 \ 8N HAC OFF \ NB 12.2kbps\ 5.2 Receive path – distortion and noise\GSM 1900



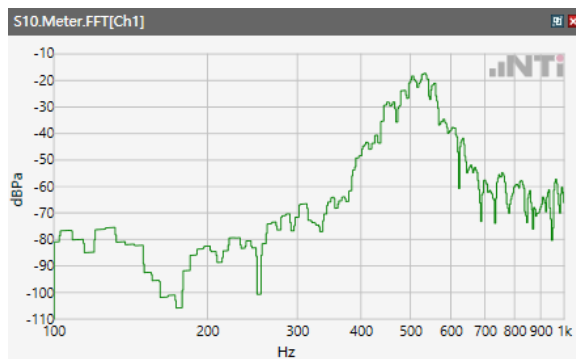
ANSI/TIA 5050-2018 \ 8N HAC OFF \ NB 12.2kbps\ 5.2 Receive path – distortion and noise\WCDMA Band II



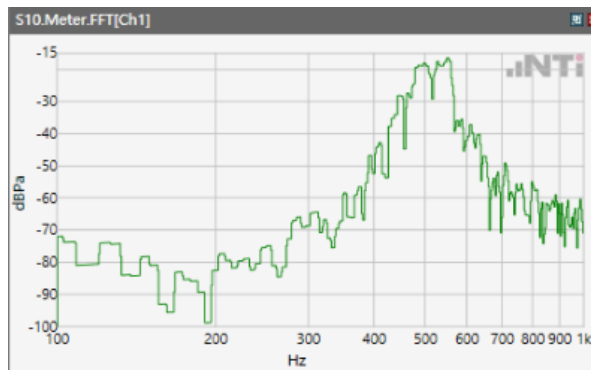
ANSI/TIA 5050-2018 \ 8N HAC OFF \ NB 12.2kbps\ 5.2 Receive path – distortion and noise\WCDMA Band IV



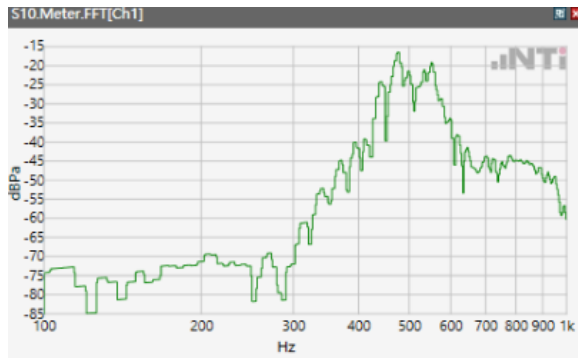
ANSI/TIA 5050-2018 \ 8N HAC OFF \ NB 12.2kbps\ 5.2 Receive path – distortion and noise\WCDMA Band V



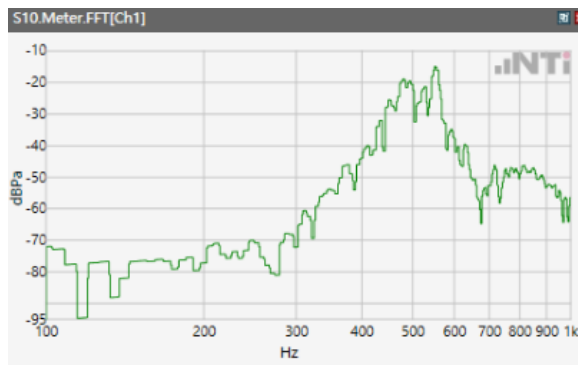
ANSI/TIA 5050-2018 \ 8N HAC OFF \ NB 12.2kbps\ 5.2 Receive path – distortion and noise\LTE Band 2



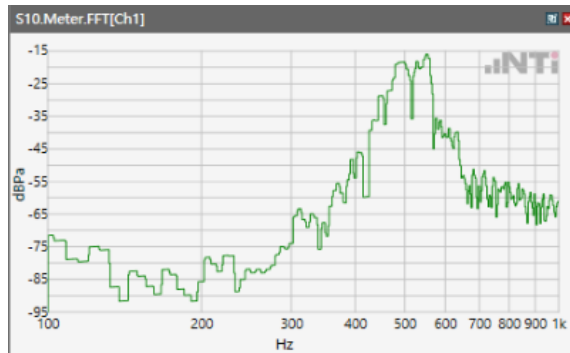
ANSI/TIA 5050-2018 \ 8N HAC OFF \ NB 12.2kbps\ 5.2 Receive path – distortion and noise\LTE Band 5



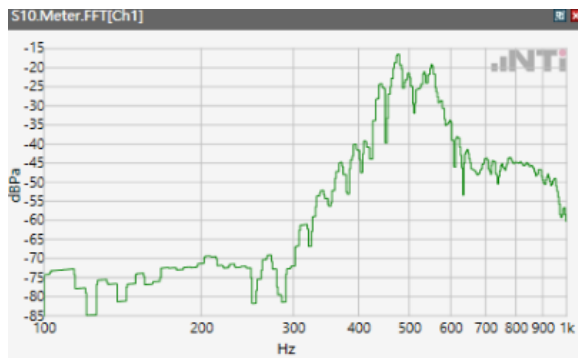
ANSI/TIA 5050-2018 \ 8N HAC OFF \ NB 12.2kbps\ 5.2 Receive path – distortion and noise\LTE Band 7



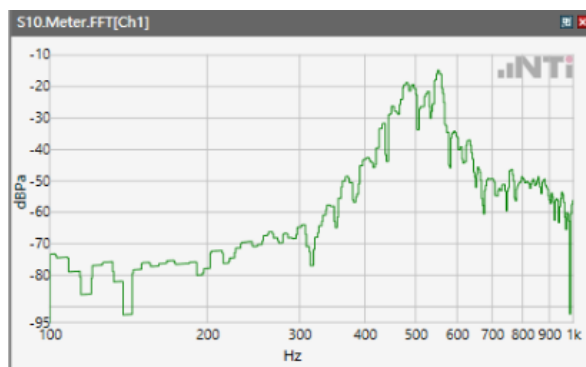
ANSI/TIA 5050-2018 \ 8N HAC OFF \ NB 12.2kbps\ 5.2 Receive path – distortion and noise\LTE Band 12



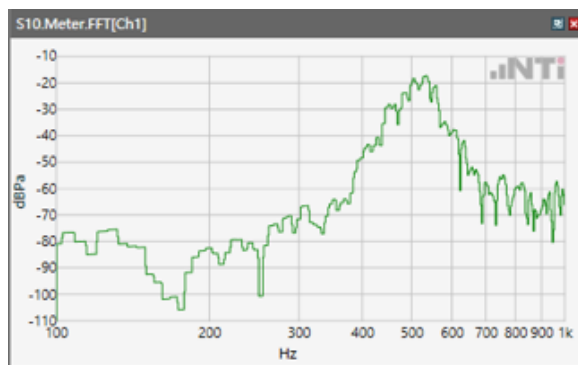
ANSI/TIA 5050-2018 \ 8N HAC OFF \ NB 12.2kbps\ 5.2 Receive path – distortion and noise\LTE Band 41



ANSI/TIA 5050-2018 \ 8N HAC OFF \ NB 12.2kbps\ 5.2 Receive path – distortion and noise\LTE Band 66

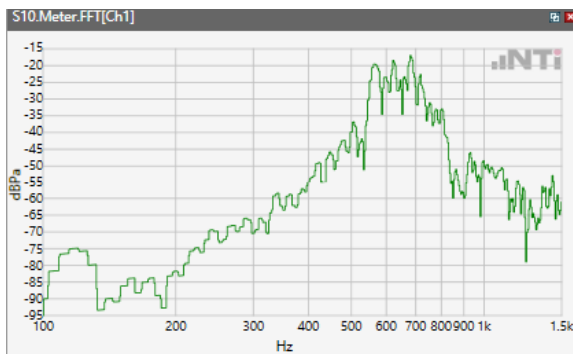


ANSI/TIA 5050-2018 \ 8N HAC OFF \ NB 12.2kbps\ 5.2 Receive path – distortion and noise\LTE Band 71

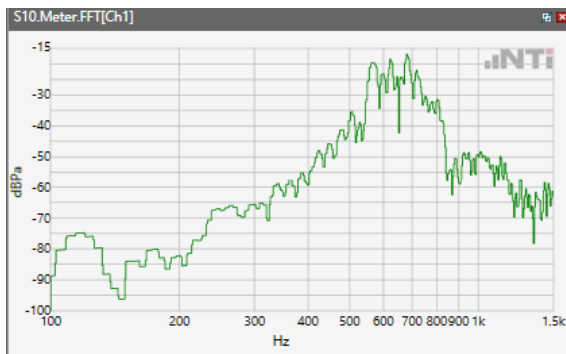


Receive path - distortion and noise 630Hz WB&NB

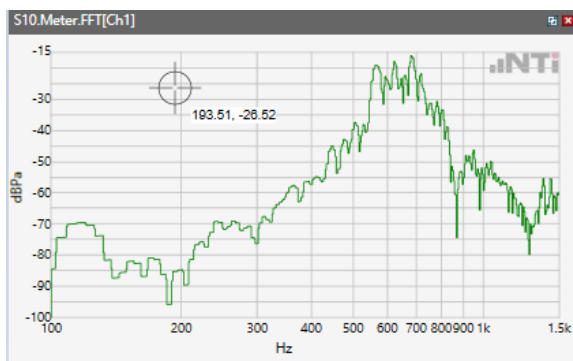
ANSI/TIA 5050-2018 \ 8N HAC OFF \ NB 12.2kbps\ 5.2 Receive path – distortion and noise GSM 850



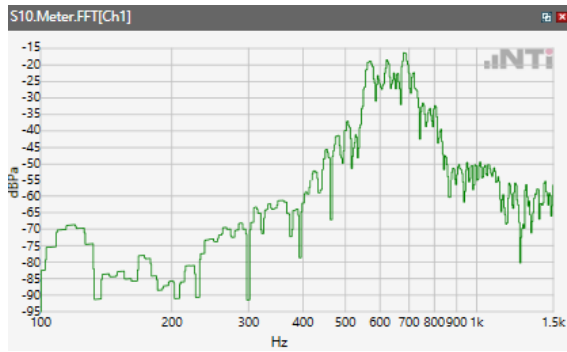
ANSI/TIA 5050-2018 \ 8N HAC OFF \ NB 12.2kbps\ 5.2 Receive path – distortion and noise\GSM 1900



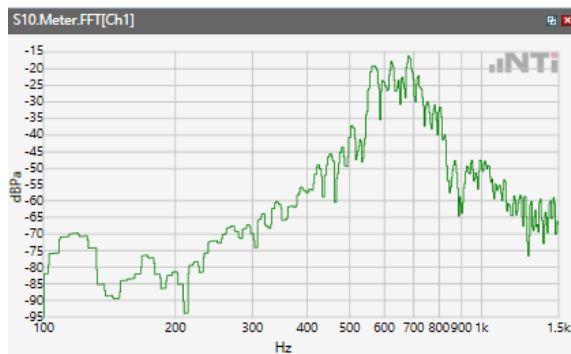
ANSI/TIA 5050-2018 \ 8N HAC OFF \ NB 12.2kbps\ 5.2 Receive path – distortion and noise\WCDMA Band II



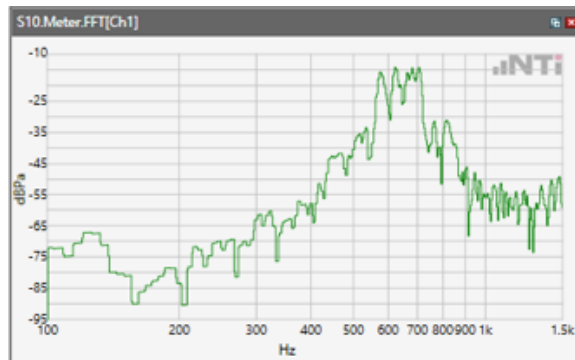
ANSI/TIA 5050-2018 \ 8N HAC OFF \ NB 12.2kbps \ 5.2 Receive path – distortion and noise \ WCDMA Band IV



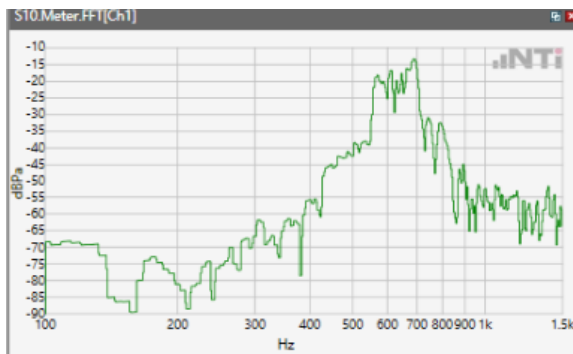
ANSI/TIA 5050-2018 \ 8N HAC OFF \ NB 12.2kbps \ 5.2 Receive path – distortion and noise \ WCDMA Band V



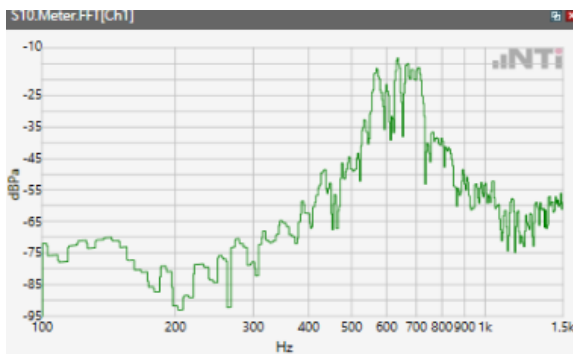
ANSI/TIA 5050-2018 \ 8N HAC OFF \ NB 12.2kbps \ 5.2 Receive path – distortion and noise \ LTE Band 2



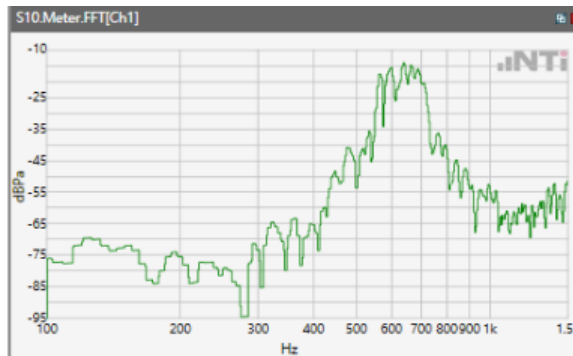
ANSI/TIA 5050-2018 \ 8N HAC OFF \ NB 12.2kbps\ 5.2 Receive path – distortion and noise\LTE Band 5



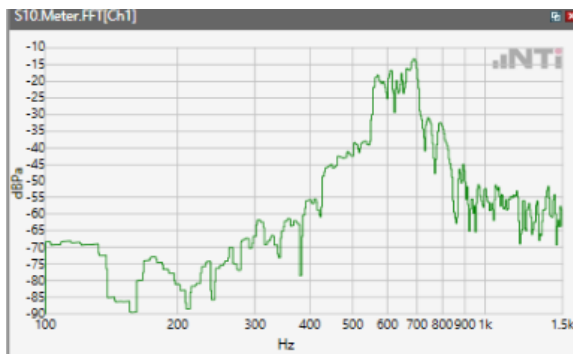
ANSI/TIA 5050-2018 \ 8N HAC OFF \ NB 12.2kbps\ 5.2 Receive path – distortion and noise\LTE Band 7



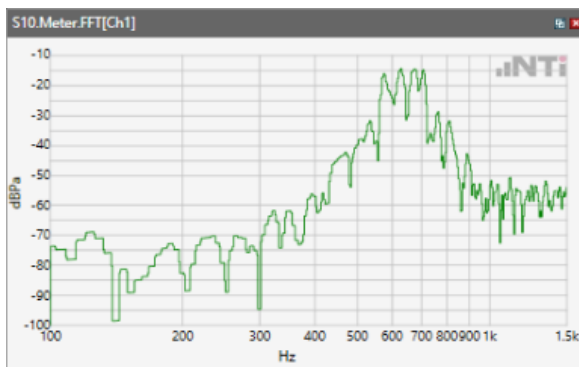
ANSI/TIA 5050-2018 \ 8N HAC OFF \ NB 12.2kbps\ 5.2 Receive path – distortion and noise\ LTE Band 12



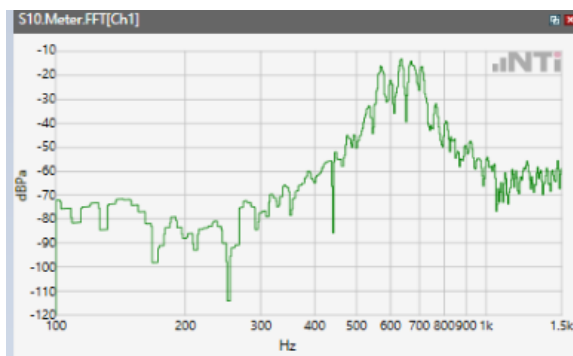
ANSI/TIA 5050-2018 \ 8N HAC OFF \ NB 12.2kbps\ 5.2 Receive path – distortion and noise\LTE Band 41



ANSI/TIA 5050-2018 \ 8N HAC OFF \ NB 12.2kbps\ 5.2 Receive path – distortion and noise\LTE Band 66

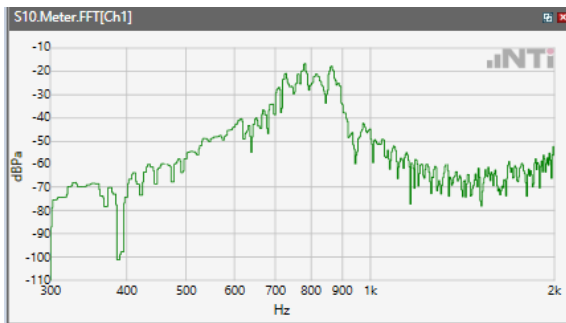


ANSI/TIA 5050-2018 \ 8N HAC OFF \ NB 12.2kbps\ 5.2 Receive path – distortion and noise\ LTE Band 71

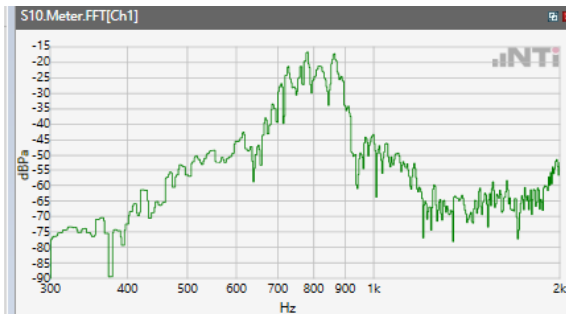


Receive path - distortion and noise 800Hz WB&NB

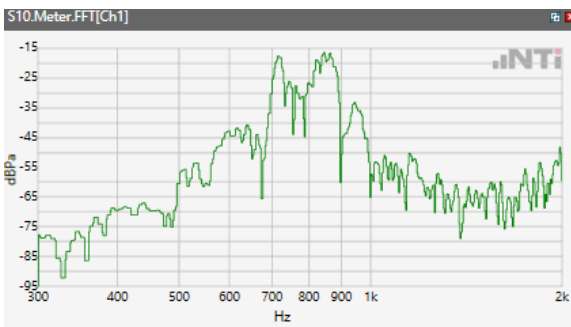
ANSI/TIA 5050-2018 \ 8N HAC OFF \ NB 12.2kbps\ 5.2 Receive path – distortion and noise\GSM 850



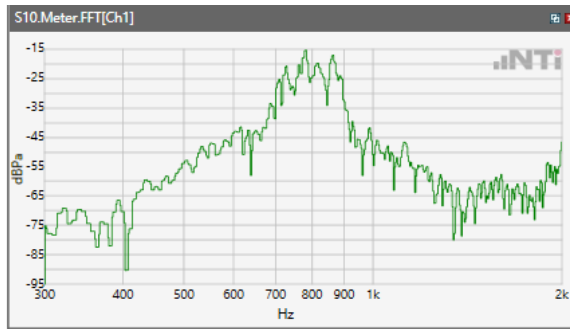
ANSI/TIA 5050-2018 \ 8N HAC OFF \ NB 12.2kbps\ 5.2 Receive path – distortion and noise\GSM 1900



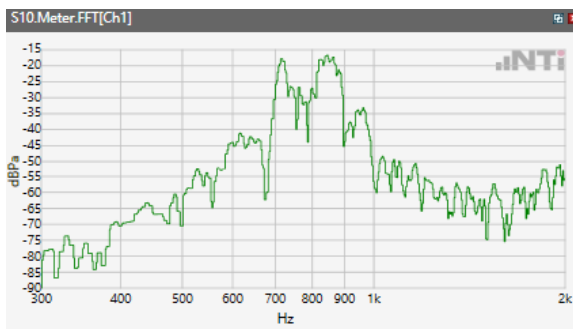
ANSI/TIA 5050-2018 \ 8N HAC OFF \ NB 12.2kbps\ 5.2 Receive path – distortion and noise\WCDMA Band II



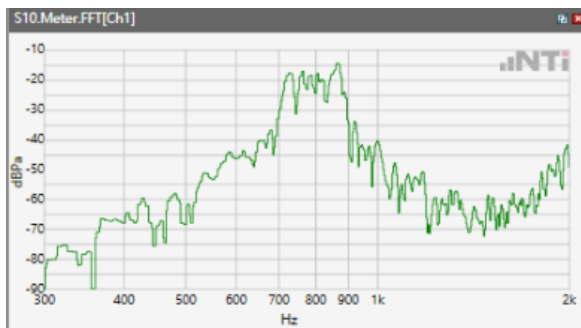
ANSI/TIA 5050-2018 \ 8N HAC OFF \ NB 12.2kbps\ 5.2 Receive path – distortion and noise\WCDMA Band IV



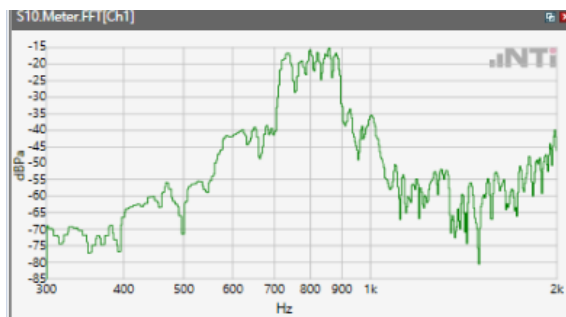
ANSI/TIA 5050-2018 \ 8N HAC OFF \ NB 12.2kbps\ 5.2 Receive path – distortion and noise\WCDMA Band V



ANSI/TIA 5050-2018 \ 8N HAC OFF \ NB 12.2kbps\ 5.2 Receive path – distortion and noise\LTE Band 2



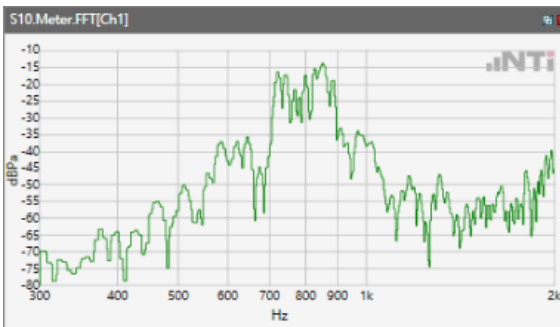
ANSI/TIA 5050-2018 \ 8N HAC OFF \ NB 12.2kbps\ 5.2 Receive path – distortion and noise\LTE Band 5



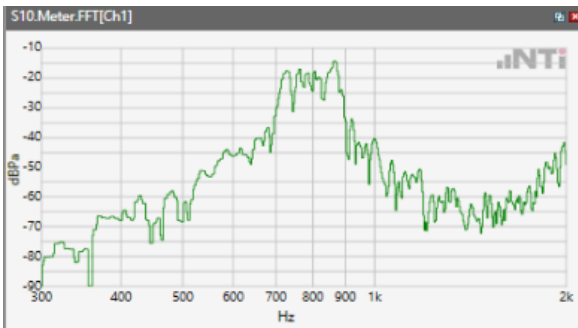
ANSI/TIA 5050-2018 \ 8N HAC OFF \ NB 12.2kbps\ 5.2 Receive path – distortion and noise\LTE Band 7



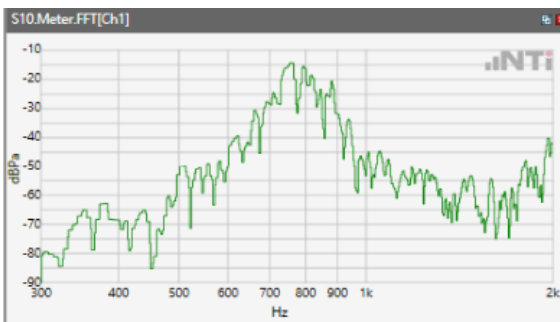
ANSI/TIA 5050-2018 \ 8N HAC OFF \ NB 12.2kbps\ 5.2 Receive path – distortion and noise\ LTE Band 12



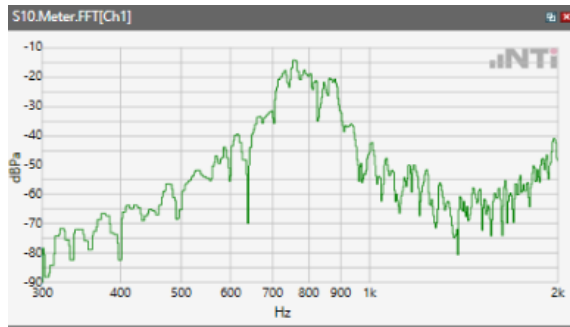
ANSI/TIA 5050-2018 \ 8N HAC OFF \ NB 12.2kbps\ 5.2 Receive path – distortion and noise\LTE Band 41



ANSI/TIA 5050-2018 \ 8N HAC OFF \ NB 12.2kbps\ 5.2 Receive path – distortion and noise\LTE Band 66

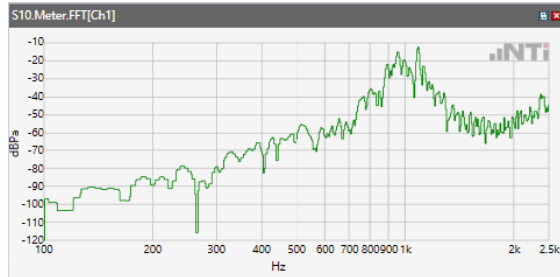


ANSI/TIA 5050-2018 \ 8N HAC OFF \ NB 12.2kbps\ 5.2 Receive path – distortion and noise\ LTE Band 71

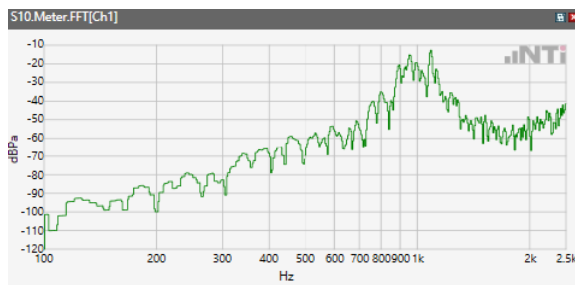


Receive path - distortion and noise 1000Hz WB&NB

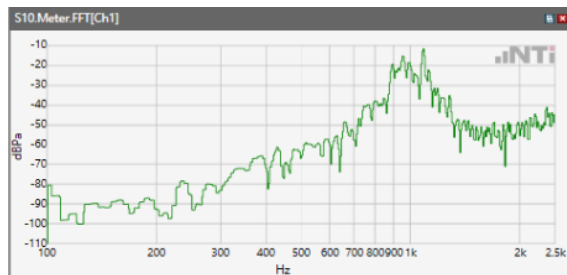
ANSI/TIA 5050-2018 \ 8N HAC OFF \ NB 12.2kbps\ 5.2 Receive path – distortion and noise\GSM 850



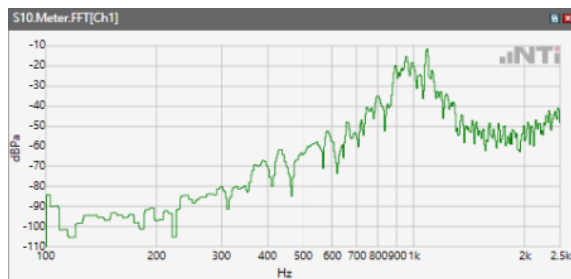
ANSI/TIA 5050-2018 \ 8N HAC OFF \ NB 12.2kbps\ 5.2 Receive path – distortion and noise\GSM 1900



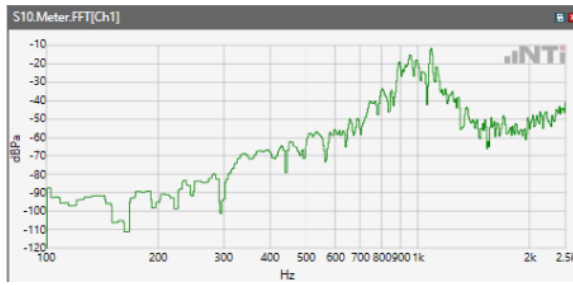
ANSI/TIA 5050-2018 \ 8N HAC OFF \ NB 12.2kbps\ 5.2 Receive path – distortion and noise\WCDMA Band II



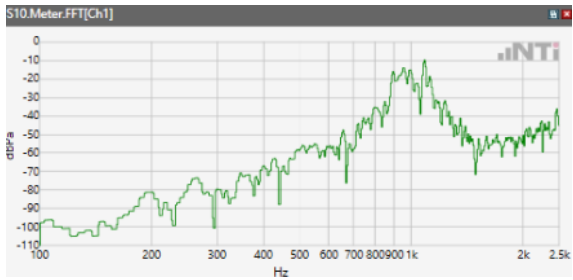
ANSI/TIA 5050-2018 \ 8N HAC OFF \ NB 12.2kbps\ 5.2 Receive path – distortion and noise\WCDMA Band IV



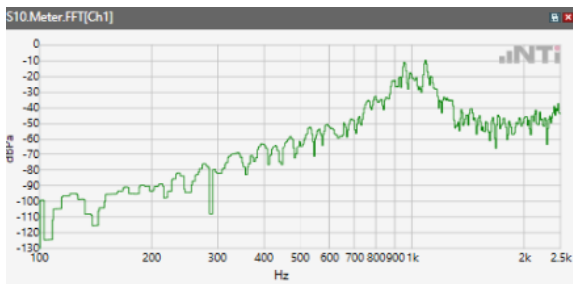
ANSI/TIA 5050-2018 \ 8N HAC OFF \ NB 12.2kbps\ 5.2 Receive path – distortion and noise\WCDMA Band V



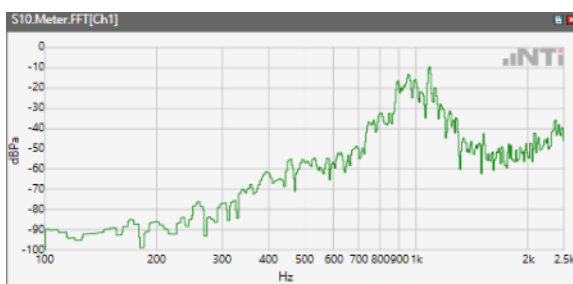
ANSI/TIA 5050-2018 \ 8N HAC OFF \ NB 12.2kbps\ 5.2 Receive path – distortion and noise\LTE Band 2



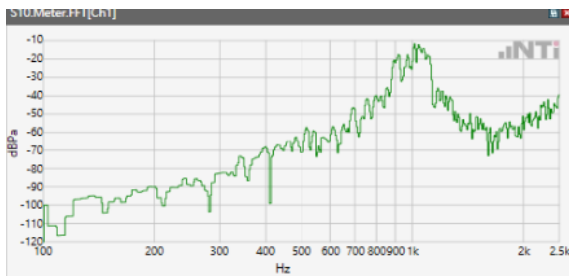
ANSI/TIA 5050-2018 \ 8N HAC OFF \ NB 12.2kbps\ 5.2 Receive path – distortion and noise\LTE Band 5



ANSI/TIA 5050-2018 \ 8N HAC OFF \ NB 12.2kbps\ 5.2 Receive path – distortion and noise\LTE Band 7



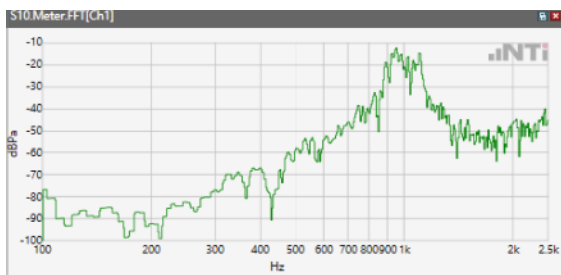
ANSI/TIA 5050-2018 \ 8N HAC OFF \ NB 12.2kbps\ 5.2 Receive path – distortion and noise\ LTE Band 12



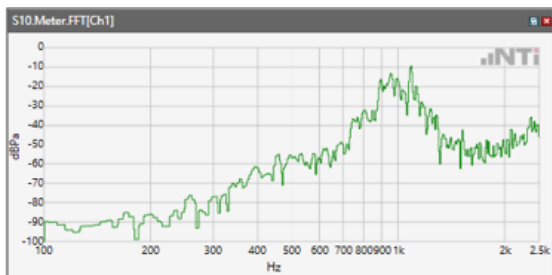
ANSI/TIA 5050-2018 \ 8N HAC OFF \ NB 12.2kbps\ 5.2 Receive path – distortion and noise\ LTE Band 41



ANSI/TIA 5050-2018 \ 8N HAC OFF \ NB 12.2kbps\ 5.2 Receive path – distortion and noise\ LTE Band 66

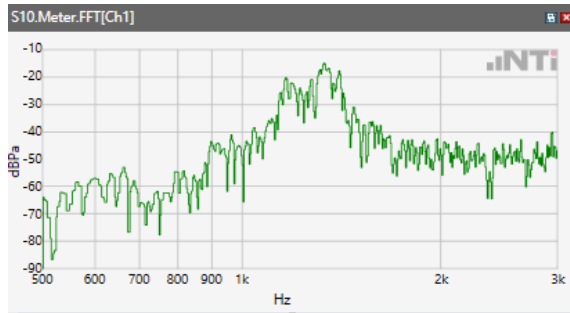


ANSI/TIA 5050-2018 \ 8N HAC OFF \ NB 12.2kbps\ 5.2 Receive path – distortion and noise\ LTE Band 71

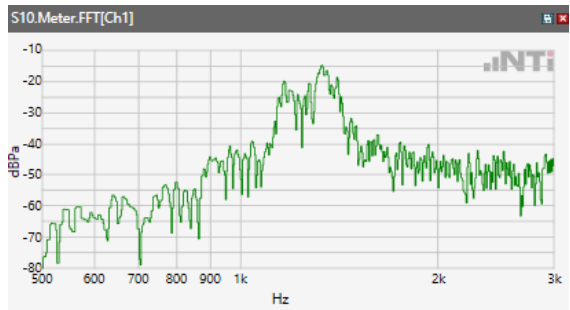


Receive path - distortion and noise 1250Hz WB&NB

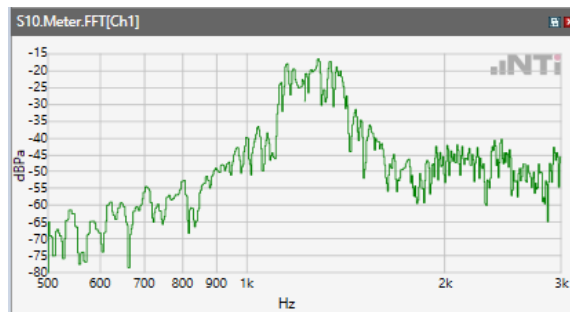
ANSI/TIA 5050-2018 \ 8N HAC OFF \ NB 12.2kbps\ 5.2 Receive path – distortion and noise\GSM 850



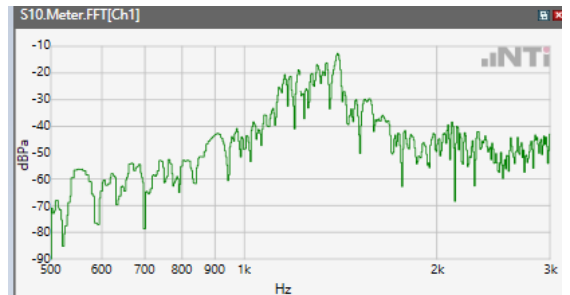
ANSI/TIA 5050-2018 \ 8N HAC OFF \ NB 12.2kbps\ 5.2 Receive path – distortion and noise\GSM 1900



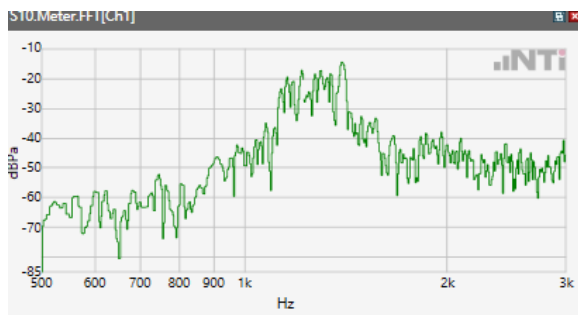
ANSI/TIA 5050-2018 \ 8N HAC OFF \ NB 12.2kbps\ 5.2 Receive path – distortion and noise\WCDMA Band II



ANSI/TIA 5050-2018 \ 8N HAC OFF \ NB 12.2kbps\ 5.2 Receive path – distortion and noise\WCDMA Band IV



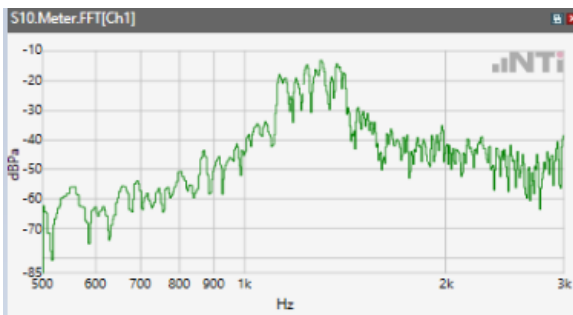
ANSI/TIA 5050-2018 \ 8N HAC OFF \ NB 12.2kbps\ 5.2 Receive path – distortion and noise\WCDMA Band V



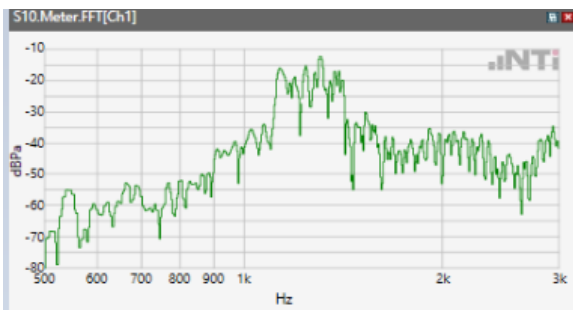
ANSI/TIA 5050-2018 \ 8N HAC OFF \ NB 12.2kbps\ 5.2 Receive path – distortion and noise\LTE Band 2



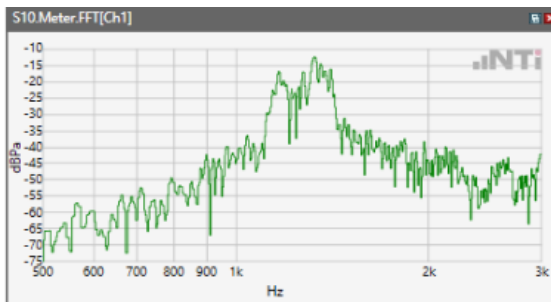
ANSI/TIA 5050-2018 \ 8N HAC OFF \ NB 12.2kbps\ 5.2 Receive path – distortion and noise\LTE Band 5



ANSI/TIA 5050-2018 \ 8N HAC OFF \ NB 12.2kbps\ 5.2 Receive path – distortion and noise\LTE Band 7



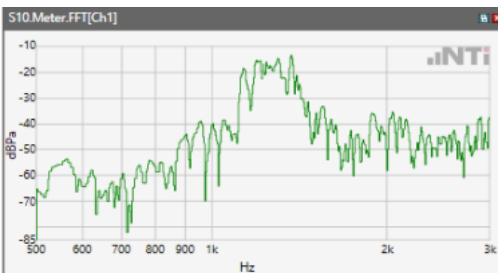
ANSI/TIA 5050-2018 \ 8N HAC OFF \ NB 12.2kbps\ 5.2 Receive path – distortion and noise\ LTE Band 12



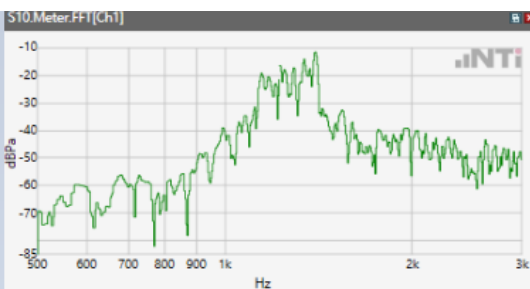
ANSI/TIA 5050-2018 \ 8N HAC OFF \ NB 12.2kbps\ 5.2 Receive path – distortion and noise\ LTE Band 41



ANSI/TIA 5050-2018 \ 8N HAC OFF \ NB 12.2kbps\ 5.2 Receive path – distortion and noise\ LTE Band 66

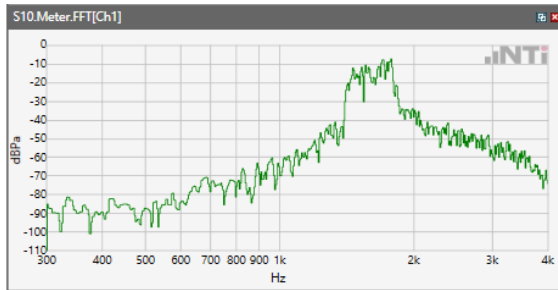


ANSI/TIA 5050-2018 \ 8N HAC OFF \ NB 12.2kbps\ 5.2 Receive path – distortion and noise\ LTE BAND 71

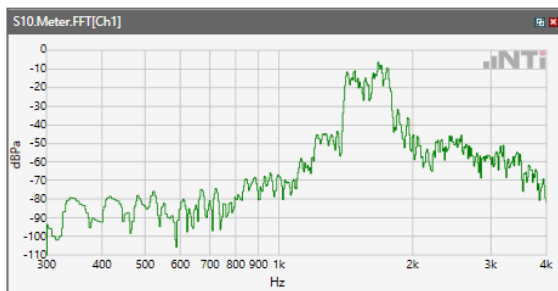


Receive path - distortion and noise 1600Hz WB&NB

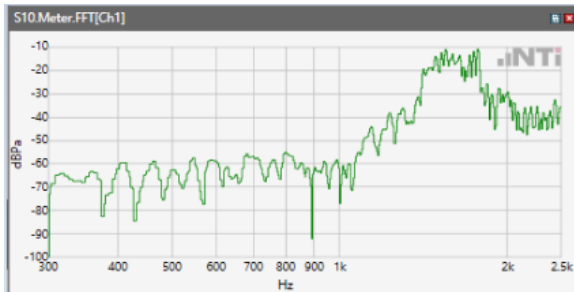
ANSI/TIA 5050-2018 \ 8N HAC OFF \ NB 12.2kbps\ 5.2 Receive path – distortion and noise\GSM 850



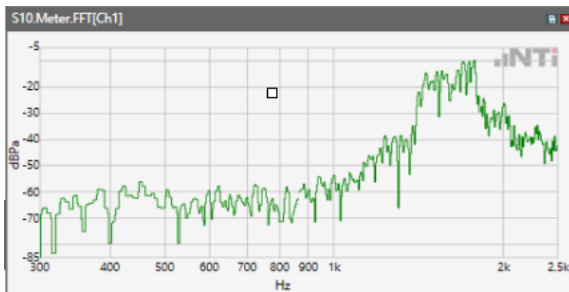
ANSI/TIA 5050-2018 \ 8N HAC OFF \ NB 12.2kbps\ 5.2 Receive path – distortion and noise\GSM 1900



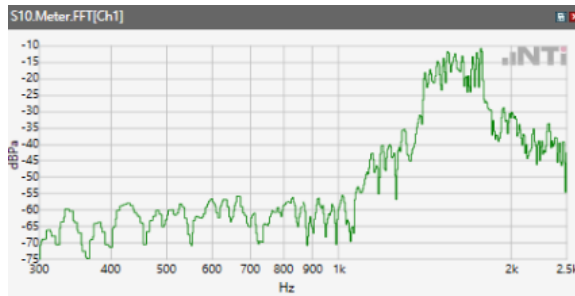
ANSI/TIA 5050-2018 \ 8N HAC OFF \ NB 12.2kbps\ 5.2 Receive path – distortion and noise\WCDMA Band II



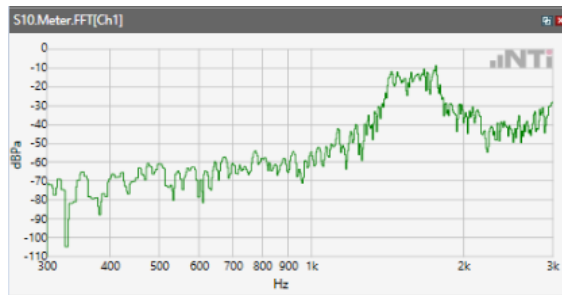
ANSI/TIA 5050-2018 \ 8N HAC OFF \ NB 12.2kbps\ 5.2 Receive path – distortion and noise\WCDMA Band IV



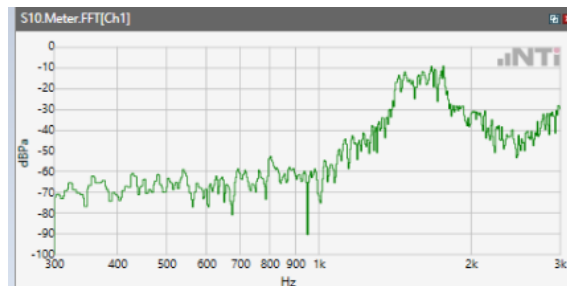
ANSI/TIA 5050-2018 \ 8N HAC OFF \ NB 12.2kbps\ 5.2 Receive path – distortion and noise\WCDMA Band V



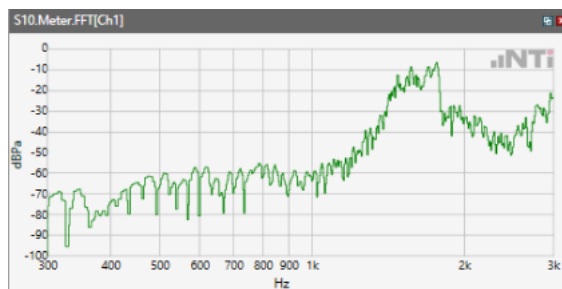
ANSI/TIA 5050-2018 \ 8N HAC OFF \ NB 12.2kbps\ 5.2 Receive path – distortion and noise\LTE Band 2



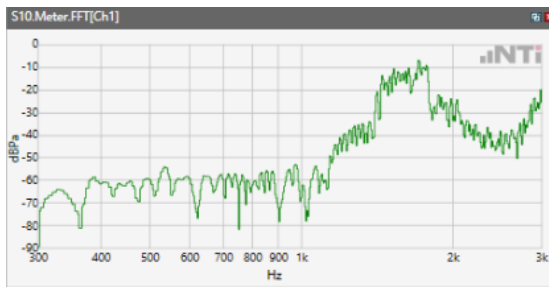
ANSI/TIA 5050-2018 \ 8N HAC OFF \ NB 12.2kbps\ 5.2 Receive path – distortion and noise\LTE Band 5



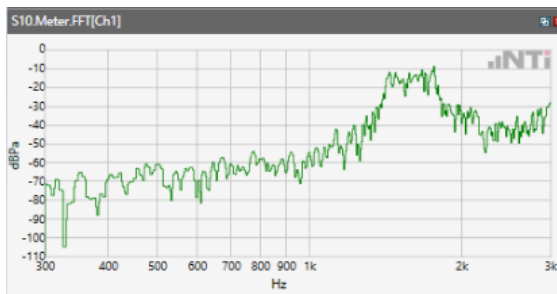
ANSI/TIA 5050-2018 \ 8N HAC OFF \ NB 12.2kbps\ 5.2 Receive path – distortion and noise\LTE Band 7



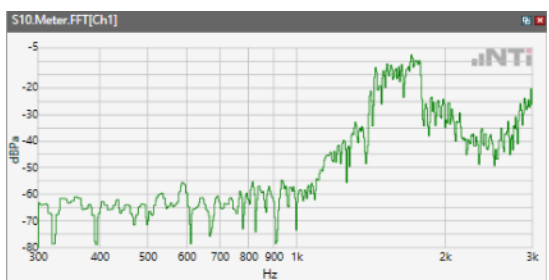
ANSI/TIA 5050-2018 \ 8N HAC OFF \ NB 12.2kbps\ 5.2 Receive path – distortion and noise\ LTE Band 12



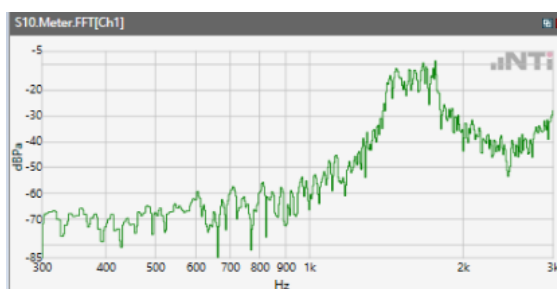
ANSI/TIA 5050-2018 \ 8N HAC OFF \ NB 12.2kbps\ 5.2 Receive path – distortion and noise\ LTE Band 41



ANSI/TIA 5050-2018 \ 8N HAC OFF \ NB 12.2kbps\ 5.2 Receive path – distortion and noise\ LTE Band 66

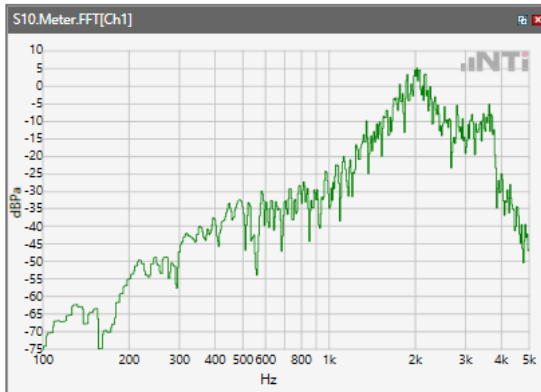


ANSI/TIA 5050-2018 \ 8N HAC OFF \ NB 12.2kbps\ 5.2 Receive path – distortion and noise\ LTE BAND 71

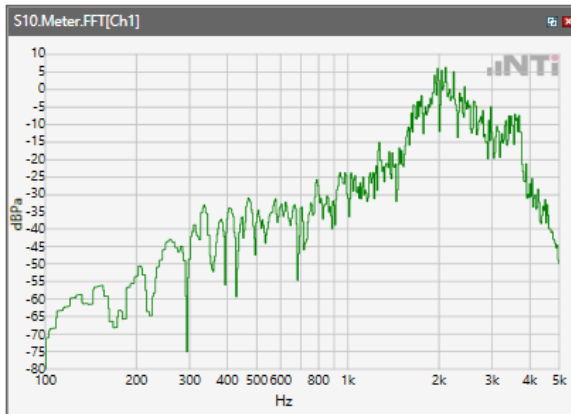


Receive path - distortion and noise 2000Hz WB&NB

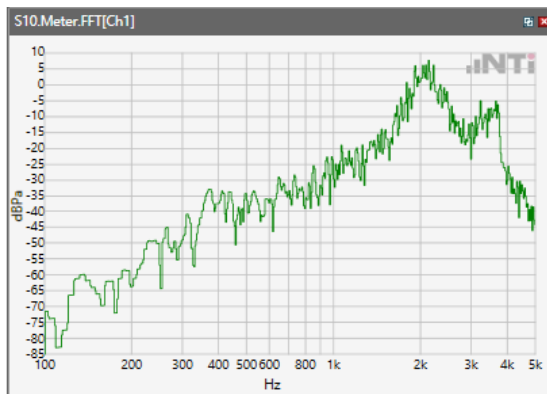
ANSI/TIA 5050-2018 \ 8N HAC OFF \ NB 12.2kbps\ 5.2 Receive path – distortion and noise\GSM 850



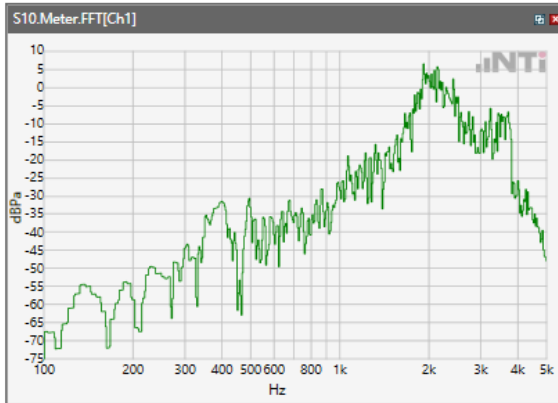
ANSI/TIA 5050-2018 \ 8N HAC OFF \ NB 12.2kbps\ 5.2 Receive path – distortion and noise\GSM 1900



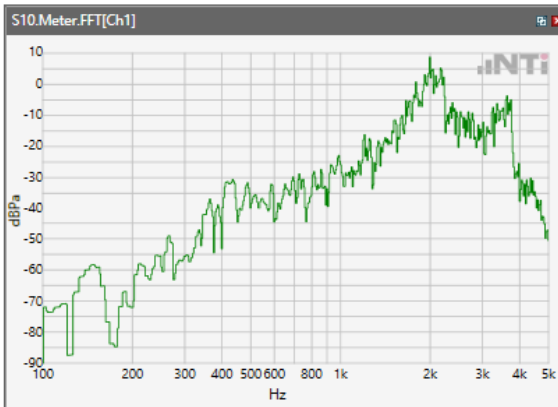
ANSI/TIA 5050-2018 \ 8N HAC OFF \ NB 12.2kbps\ 5.2 Receive path – distortion and noise\WCDMA Band II



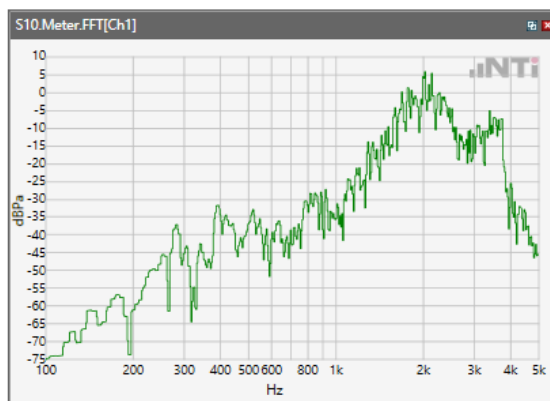
ANSI/TIA 5050-2018 \ 8N HAC OFF \ NB 12.2kbps\ 5.2 Receive path – distortion and noise\WCDMA Band IV



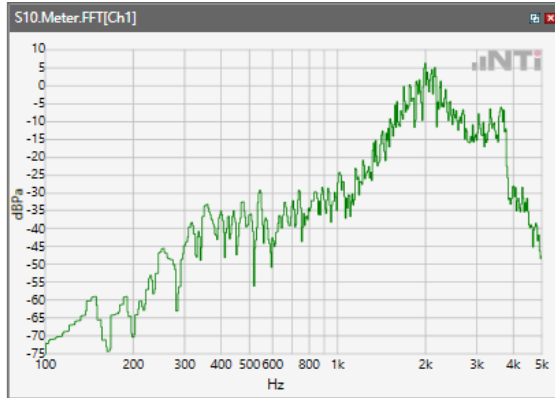
ANSI/TIA 5050-2018 \ 8N HAC OFF \ NB 12.2kbps\ 5.2 Receive path – distortion and noise\WCDMA Band V



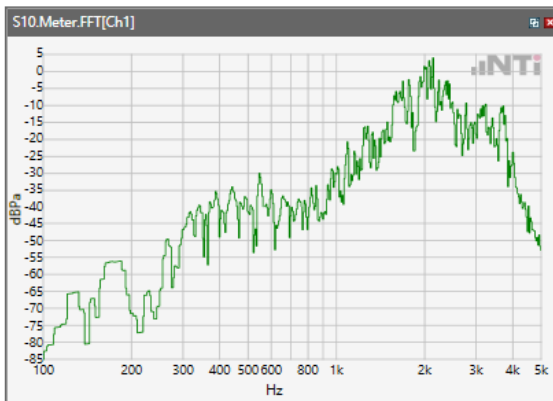
ANSI/TIA 5050-2018 \ 8N HAC OFF \ NB 12.2kbps\ 5.2 Receive path – distortion and noise\LTE Band 2



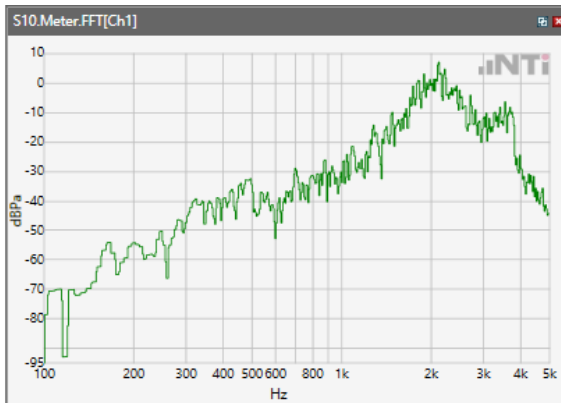
ANSI/TIA 5050-2018 \ 8N HAC OFF \ NB 12.2kbps\ 5.2 Receive path – distortion and noise\LTE Band 5



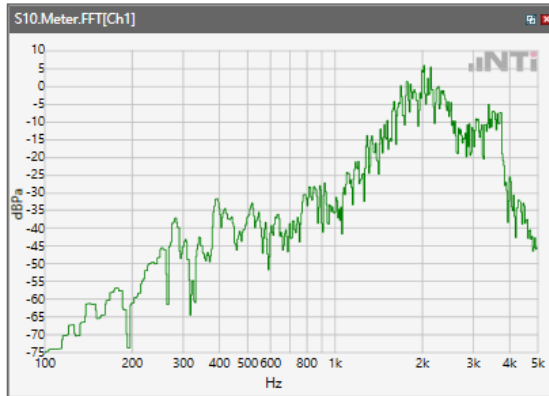
ANSI/TIA 5050-2018 \ 8N HAC OFF \ NB 12.2kbps\ 5.2 Receive path – distortion and noise\LTE Band 7



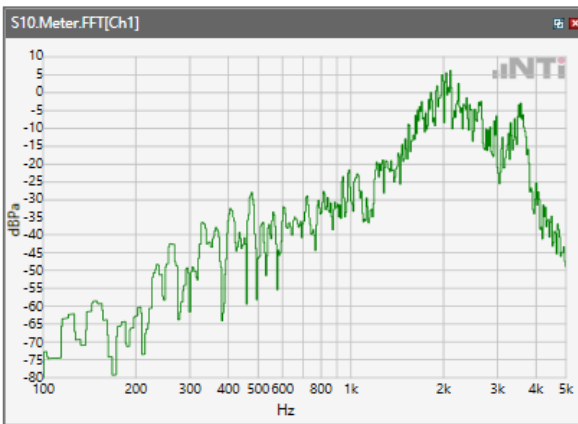
ANSI/TIA 5050-2018 \ 8N HAC OFF \ NB 12.2kbps\ 5.2 Receive path – distortion and noise\ LTE Band 12



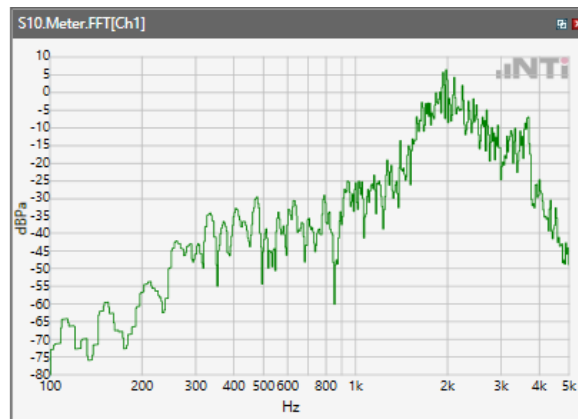
ANSI/TIA 5050-2018 \ 8N HAC OFF \ NB 12.2kbps\ 5.2 Receive path – distortion and noise\LTE Band 41



ANSI/TIA 5050-2018 \ 8N HAC OFF \ NB 12.2kbps\ 5.2 Receive path – distortion and noise\LTE Band 66

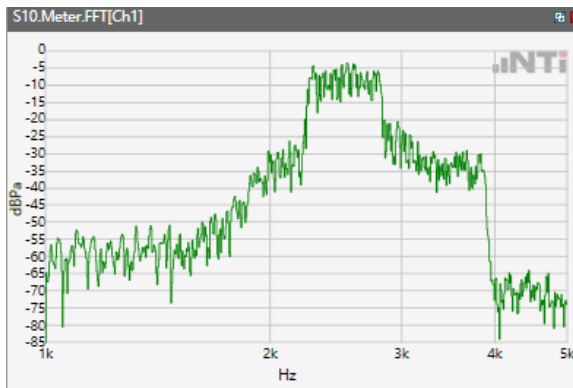


ANSI/TIA 5050-2018 \ 8N HAC OFF \ NB 12.2kbps\ 5.2 Receive path – distortion and noise\ LTE BAND 71

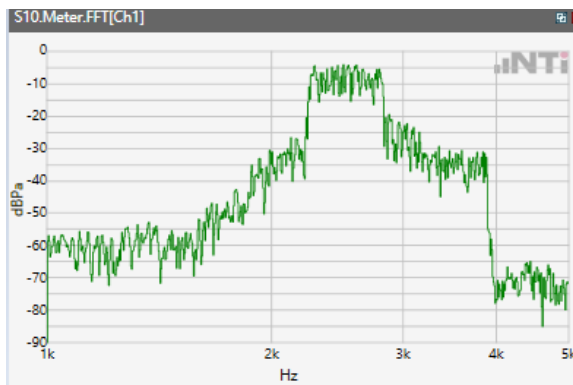


Receive path - distortion and noise 2500Hz WB&NB

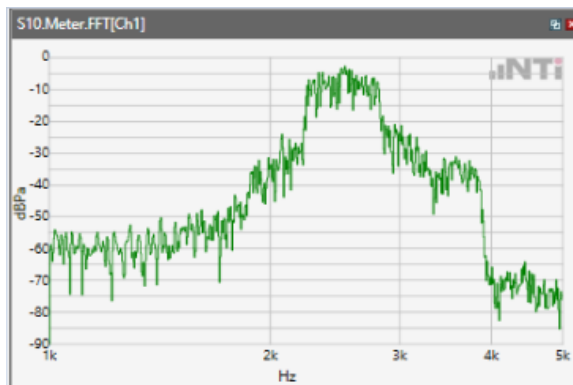
ANSI/TIA 5050-2018 \ 8N HAC OFF \ NB 12.2kbps\ 5.2 Receive path – distortion and noise\GSM 850



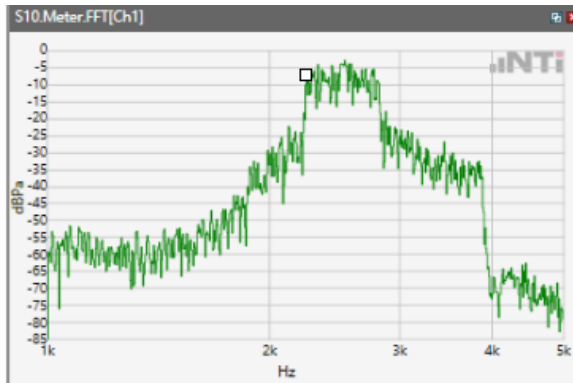
ANSI/TIA 5050-2018 \ 8N HAC OFF \ NB 12.2kbps\ 5.2 Receive path – distortion and noise\GSM 1900



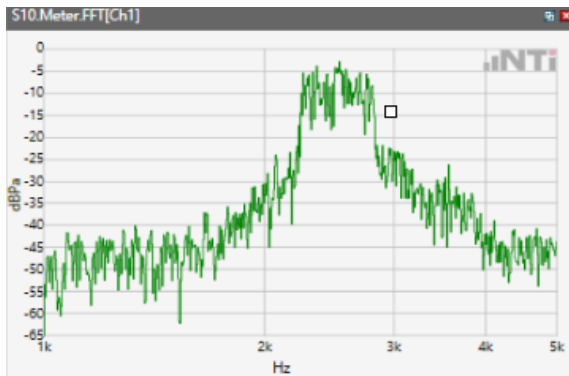
ANSI/TIA 5050-2018 \ 8N HAC OFF \ NB 12.2kbps\ 5.2 Receive path – distortion and noise\WCDMA Band II



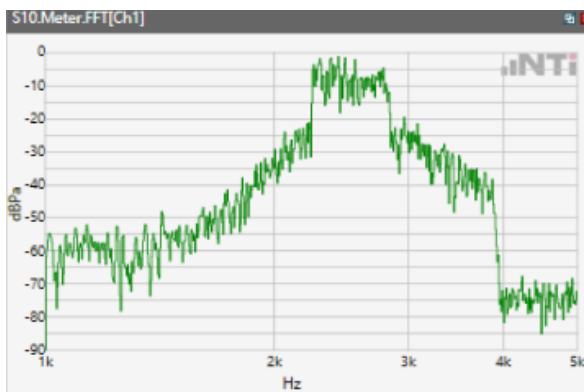
ANSI/TIA 5050-2018 \ 8N HAC OFF \ NB 12.2kbps\ 5.2 Receive path – distortion and noise\WCDMA Band IV



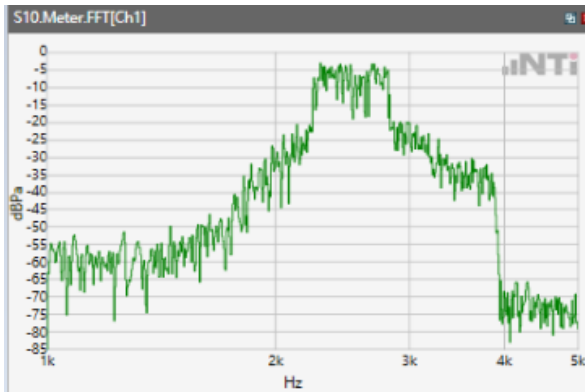
ANSI/TIA 5050-2018 \ 8N HAC OFF \ NB 12.2kbps\ 5.2 Receive path – distortion and noise\WCDMA Band V



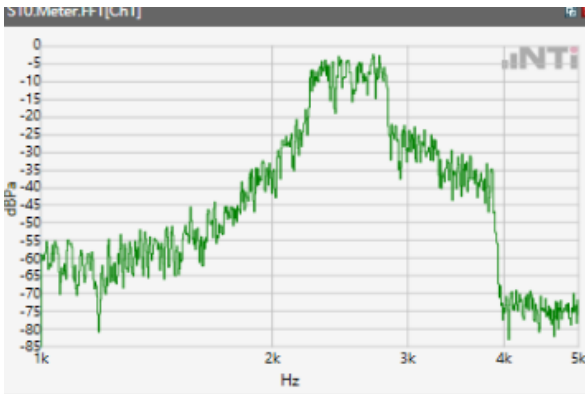
ANSI/TIA 5050-2018 \ 8N HAC OFF \ NB 12.2kbps\ 5.2 Receive path – distortion and noise\LTE Band 2



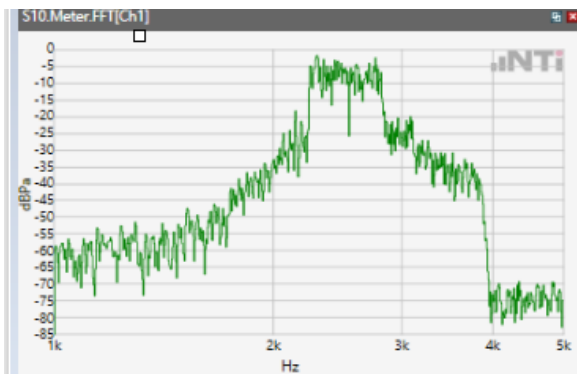
ANSI/TIA 5050-2018 \ 8N HAC OFF \ NB 12.2kbps\ 5.2 Receive path – distortion and noise\LTE Band 5



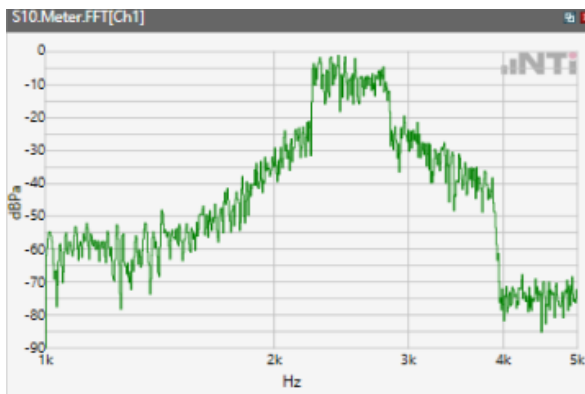
ANSI/TIA 5050-2018 \ 8N HAC OFF \ NB 12.2kbps\ 5.2 Receive path – distortion and noise\LTE Band 7



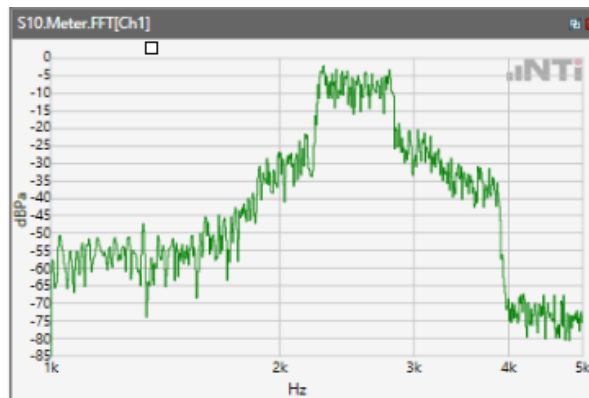
ANSI/TIA 5050-2018 \ 8N HAC OFF \ NB 12.2kbps\ 5.2 Receive path – distortion and noise\ LTE Band 12



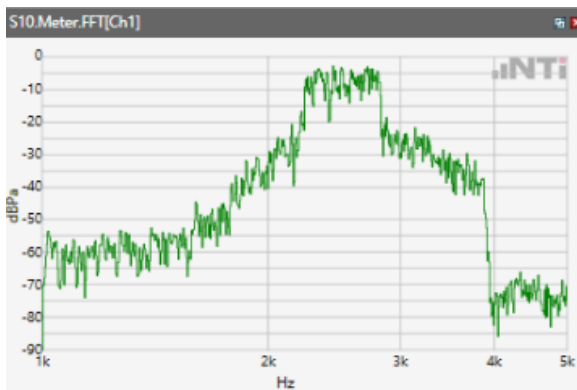
ANSI/TIA 5050-2018 \ 8N HAC OFF \ NB 12.2kbps\ 5.2 Receive path – distortion and noise\LTE Band 41



ANSI/TIA 5050-2018 \ 8N HAC OFF \ NB 12.2kbps\ 5.2 Receive path – distortion and noise\LTE Band 66

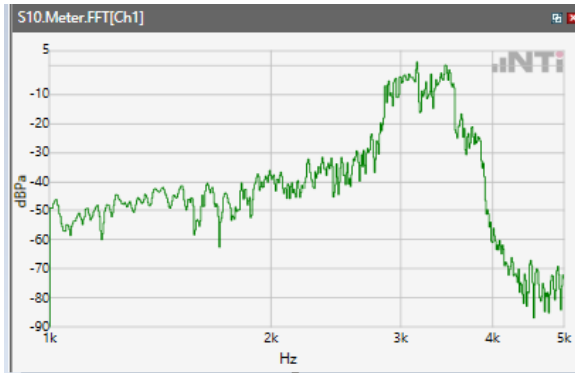


ANSI/TIA 5050-2018 \ 8N HAC OFF \ NB 12.2kbps\ 5.2 Receive path – distortion and noise\LTE BAND 71

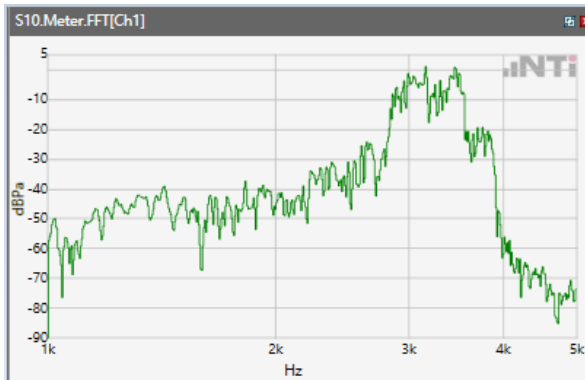


Receive path - distortion and noise 3150Hz WB&NB

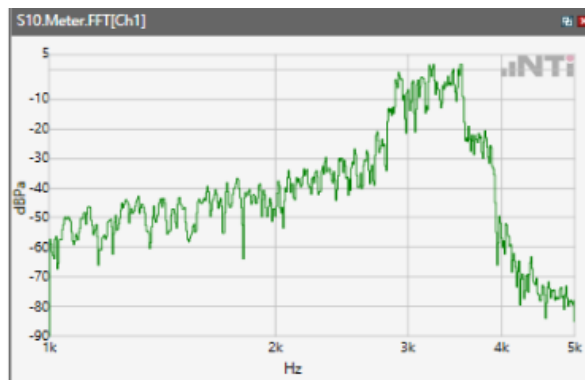
ANSI/TIA 5050-2018 \ 8N HAC OFF \ NB 12.2kbps\ 5.2 Receive path – distortion and noise\GSM 850



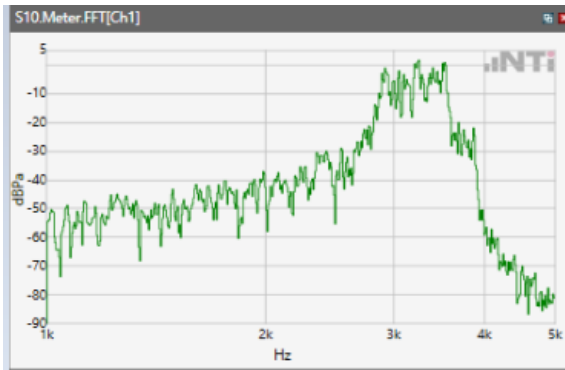
ANSI/TIA 5050-2018 \ 8N HAC OFF \ NB 12.2kbps\ 5.2 Receive path – distortion and noise\GSM 1900



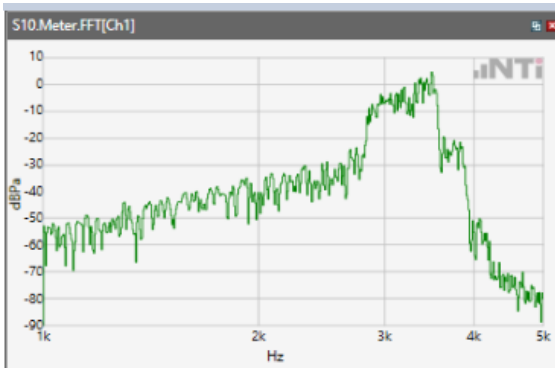
ANSI/TIA 5050-2018 \ 8N HAC OFF \ NB 12.2kbps\ 5.2 Receive path – distortion and noise\WCDMA Band II



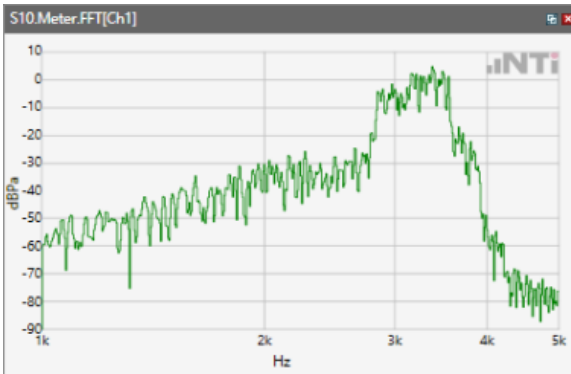
ANSI/TIA 5050-2018 \ 8N HAC OFF \ NB 12.2kbps\ 5.2 Receive path – distortion and noise\WCDMA Band IV



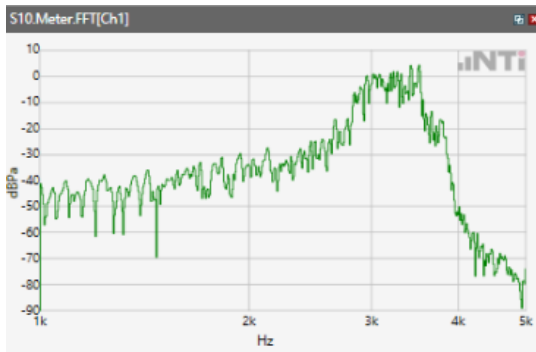
ANSI/TIA 5050-2018 \ 8N HAC OFF \ NB 12.2kbps\ 5.2 Receive path – distortion and noise\WCDMA Band V



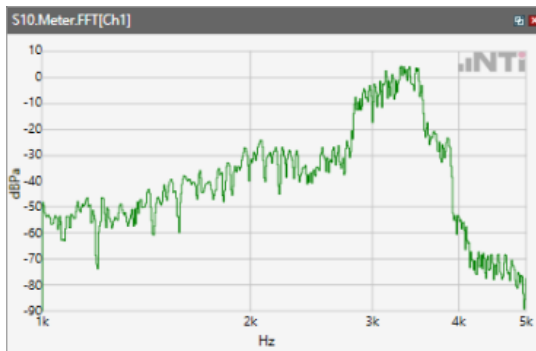
ANSI/TIA 5050-2018 \ 8N HAC OFF \ NB 12.2kbps\ 5.2 Receive path – distortion and noise\LTE Band 2



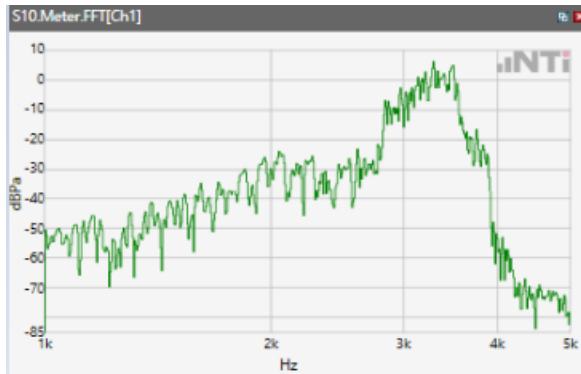
ANSI/TIA 5050-2018 \ 8N HAC OFF \ NB 12.2kbps\ 5.2 Receive path – distortion and noise\LTE Band 5



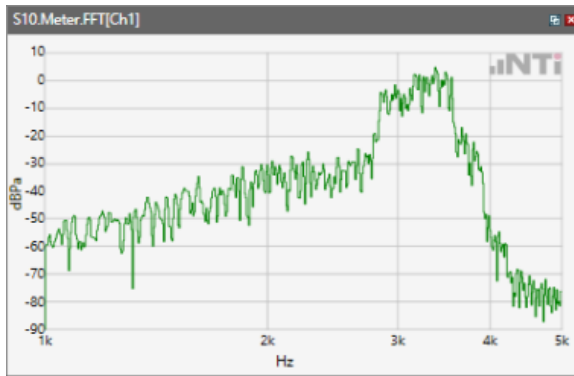
ANSI/TIA 5050-2018 \ 8N HAC OFF \ NB 12.2kbps\ 5.2 Receive path – distortion and noise\LTE Band 7



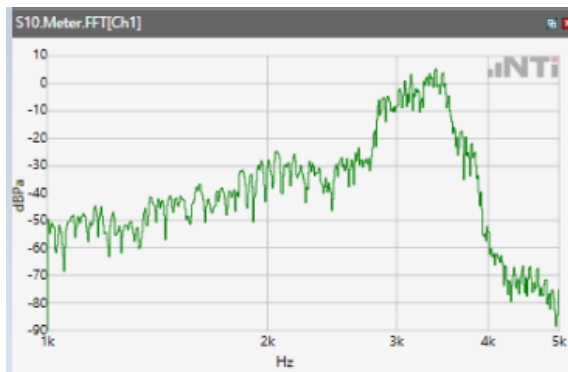
ANSI/TIA 5050-2018 \ 8N HAC OFF \ NB 12.2kbps\ 5.2 Receive path – distortion and noise\ LTE Band 12



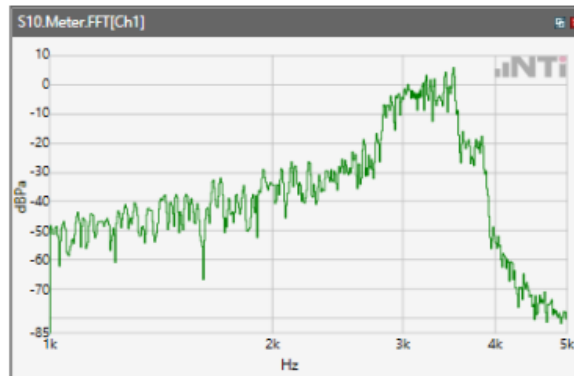
ANSI/TIA 5050-2018 \ 8N HAC OFF \ NB 12.2kbps\ 5.2 Receive path – distortion and noise\LTE Band 41



ANSI/TIA 5050-2018 \ 8N HAC OFF \ NB 12.2kbps\ 5.2 Receive path – distortion and noise\LTE Band 66



ANSI/TIA 5050-2018 \ 8N HAC OFF \ NB 12.2kbps\ 5.2 Receive path – distortion and noise\ LTE Band 71

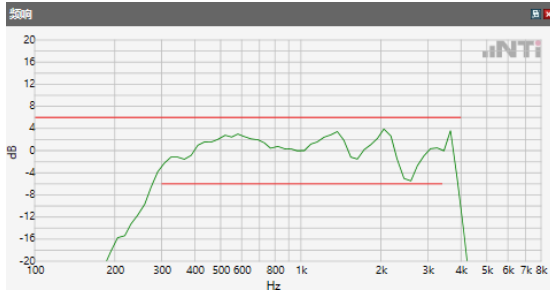


5.2 Receive path – distortion and noise

The distortion and noise test results data are referred to Annex C.

5.3 Receive Acoustic Frequency response Performance

ANSI/TIA 5050-2018 \ 8N HAC OFF \ NB 12.2kbps\GSM 850



Absolute minimal distance

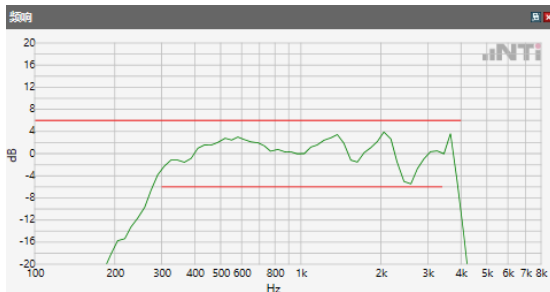
OK

OK

Limits

	lower
Run 1	Fit into tolerance

ANSI/TIA 5050-2018 \ 8N HAC OFF \ NB 12.2kbps\GSM 1900



Absolute minimal distance

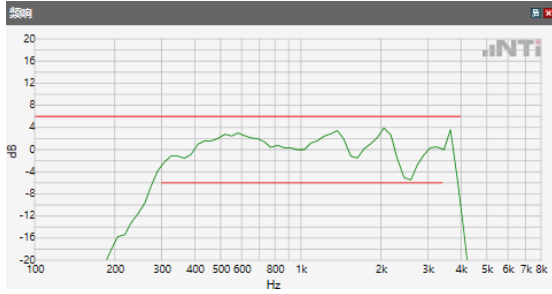
OK

OK

Limits

	lower
Run 1	Fit into tolerance

ANSI/TIA 5050-2018 \ 8N HAC OFF \ NB 12.2kbps\WCDMA Band II



Absolute minimal distance

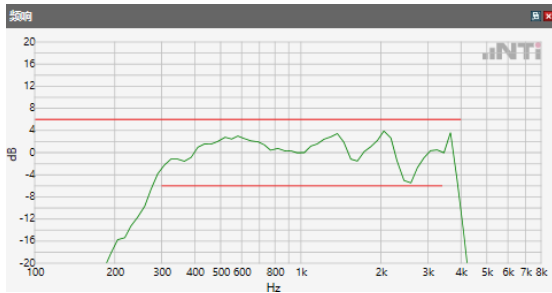
OK

OK

Limits

	lower
Run 1	Fit into tolerance

ANSI/TIA 5050-2018 \ 8N HAC OFF \ NB 12.2kbps\ WCDMA Band IV



Absolute minimal distance

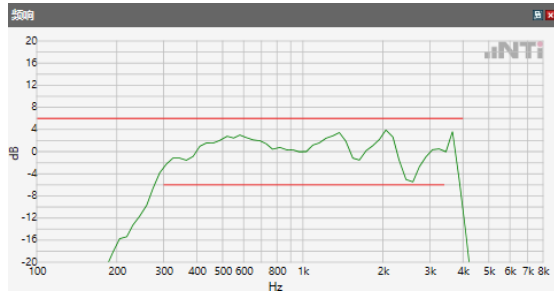
OK

OK

Limits

	lower
Run 1	Fit into tolerance

ANSI/TIA 5050-2018 \ 8N HAC OFF \ NB 12.2kbps\ WCDMA Band V



Absolute minimal distance

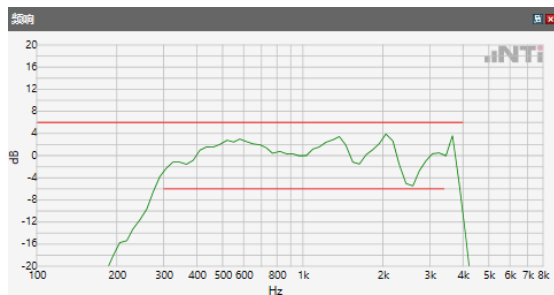
OK

OK

Limits

	lower
Run 1	Fit into tolerance

ANSI/TIA 5050-2018 \ 8N HAC OFF \ NB 12.2kbps\LTE Band 2



Absolute minimal distance

OK

OK

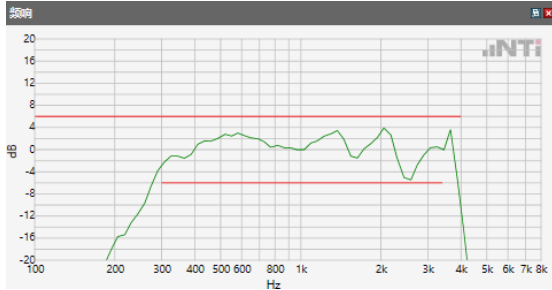
Limits

	lower
Run 1	Fit into tolerance

Limits

	lower
Run 1	Fit into tolerance

ANSI/TIA 5050-2018 \ 8N HAC OFF \ NB 12.2kbps\ LTE Band 5

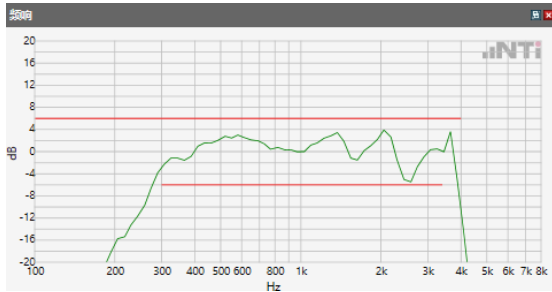


Absolute minimal distance

OK

OK

ANSI/TIA 5050-2018 \ 8N HAC OFF \ NB 12.2kbps\ LTE Band 7



Absolute minimal distance

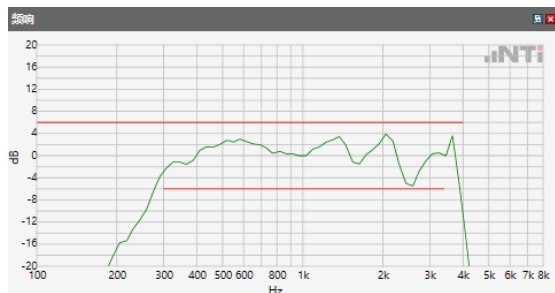
OK

OK

Limits

	lower
Run 1	Fit into tolerance

ANSI/TIA 5050-2018 \ 8N HAC OFF \ NB 12.2kbps\ LTE Band 12



Absolute minimal distance

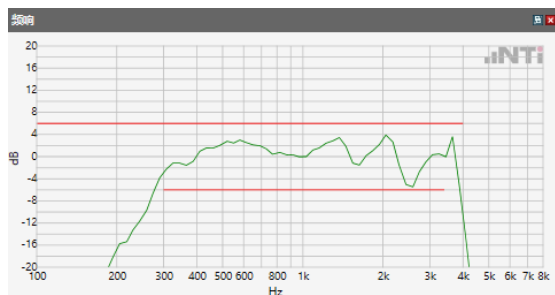
OK

OK

Limits

	lower
Run 1	Fit into tolerance

ANSI/TIA 5050-2018 \ 8N HAC OFF \ NB 12.2kbps\ LTE Band 41



Absolute minimal distance

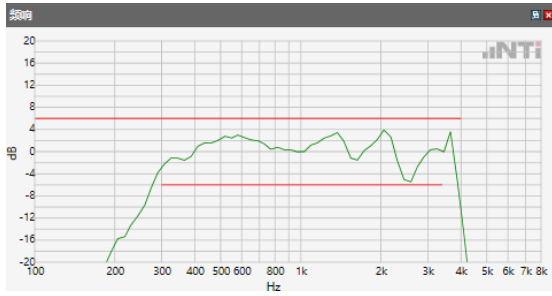
OK

OK

Limits

	lower
Run 1	Fit into tolerance

ANSI/TIA 5050-2018 \ 8N HAC OFF \ NB 12.2kbps\ LTE Band 66



Absolute minimal distance

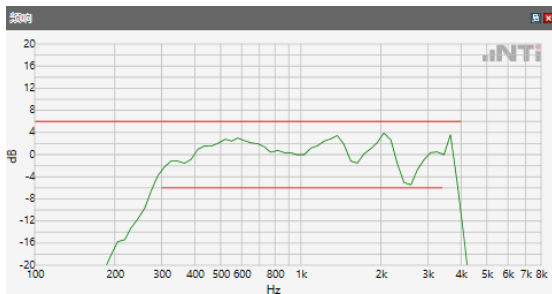
OK

OK

Limits

	lower
Run 1	Fit into tolerance

ANSI/TIA 5050-2018 \ 8N HAC OFF \ NB 12.2kbps\ LTE BAND 71



Absolute minimal distance

OK

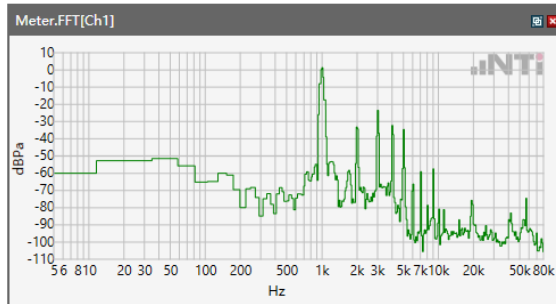
OK

Limits

	lower
Run 1	Fit into tolerance

5.1 Receive Volume Control Performance 8N---WB

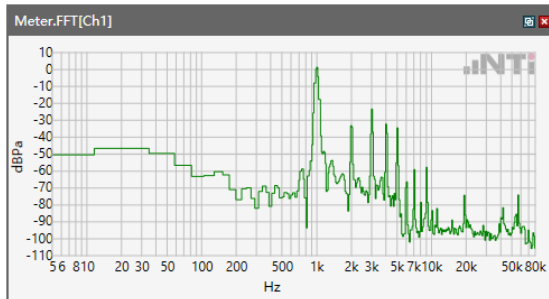
ANSI/TIA 5050-2018 \ 8N HAC OFF \ WB 23.85 kbps \ WCDMA II



Speech Level RCV: 98.13 dB[SPL]

Calculated Value: 28.13 dB Ok

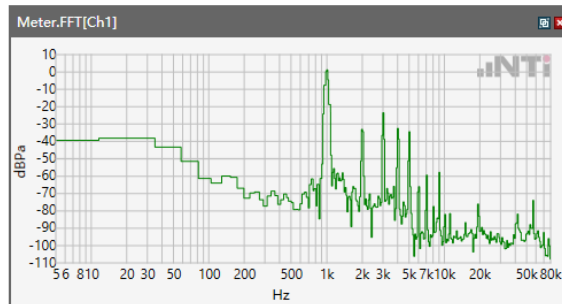
ANSI/TIA 5050-2018 \ 8N HAC OFF \ WB 23.85 kbps \ WCDMA IV



Speech Level RCV: 97.09 dB[SPL]

Calculated Value: 27.09 dB Ok

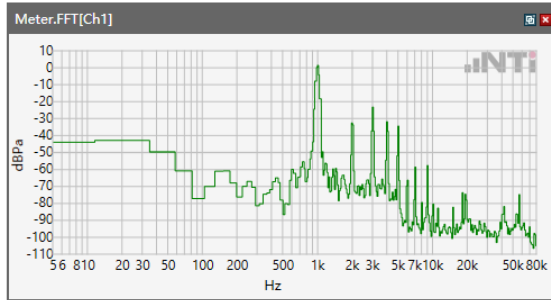
ANSI/TIA 5050-2018 \ 8N HAC OFF \ WB 23.85 kbps \ WCDMA V



Speech Level RCV: 97.11 dB[SPL]

Calculated Value: 27.11 dB Ok

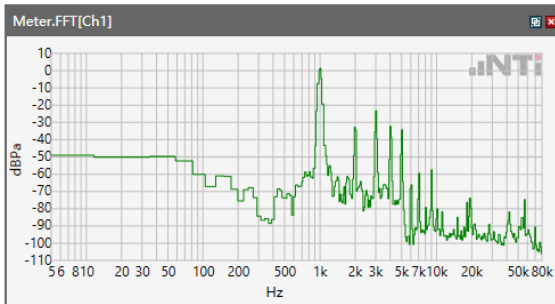
ANSI/TIA 5050-2018 \ 8N HAC OFF \ WB 23.85 kbps \ LTE Band 2



Speech Level RCV: 98.46 dB[SPL]

Calculated Value: 28.46 dB Ok

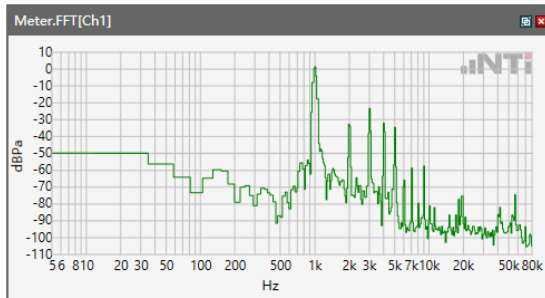
ANSI/TIA 5050-2018 \ 8N HAC OFF \ WB 23.85 kbps \ LTE Band 5



Speech Level RCV: 98.03 dB[SPL]

Calculated Value: 28.03 dB Ok

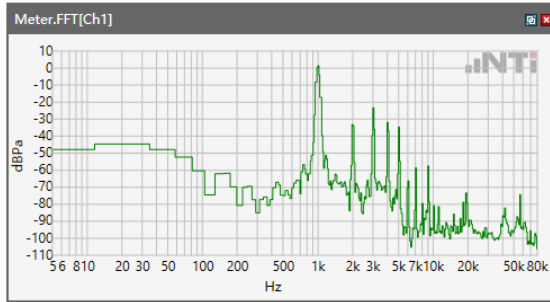
ANSI/TIA 5050-2018 \ 8N HAC OFF \ WB 23.85 kbps \ LTE Band 7



Speech Level RCV: 96.03 dB[SPL]

Calculated Value: 26.03 dB Ok

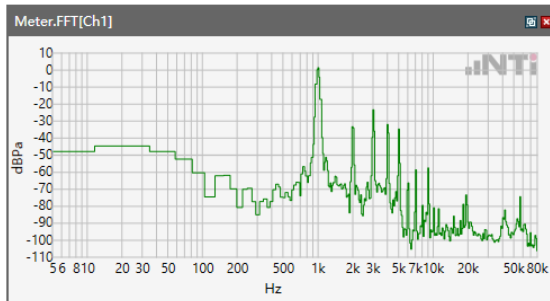
ANSI/TIA 5050-2018 \ 8N HAC OFF \ WB 23.85 kbps \ LTE Band 12



Speech Level RCV: 96.76 dB[SPL]

Calculated Value: 26.76 dB Ok

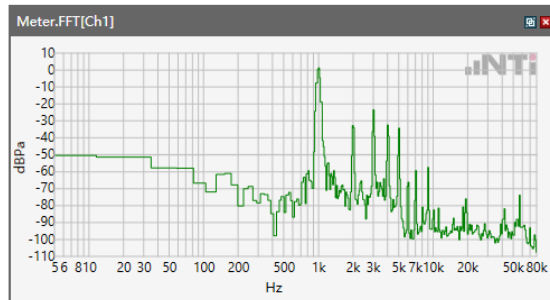
ANSI/TIA 5050-2018 \ 8N HAC OFF \ WB 23.85 kbps \ LTE Band 41



Speech Level RCV:96.03 dB[SPL]

Calculated Value: 26.03dB Ok

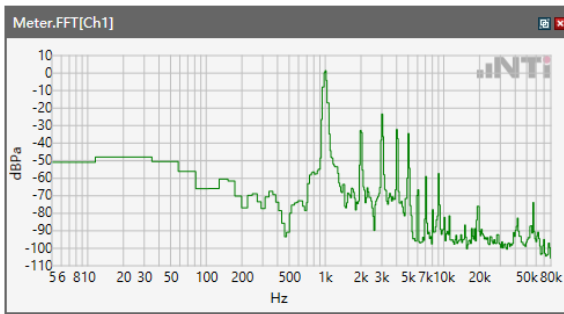
ANSI/TIA 5050-2018 \ 8N HAC OFF \ WB 23.85 kbps \ LTE Band 66



Speech Level RCV: 95.89 dB[SPL]

Calculated Value: 25.89 dB Ok

ANSI/TIA 5050-2018 \ 8N HAC OFF \ WB 23.85 kbps \ LTE BAND 71

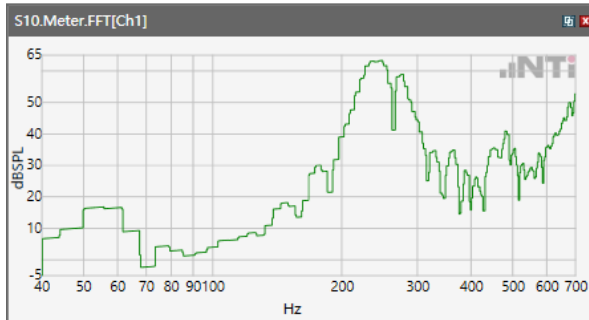


Speech Level RCV: 98.23 dB[SPL]

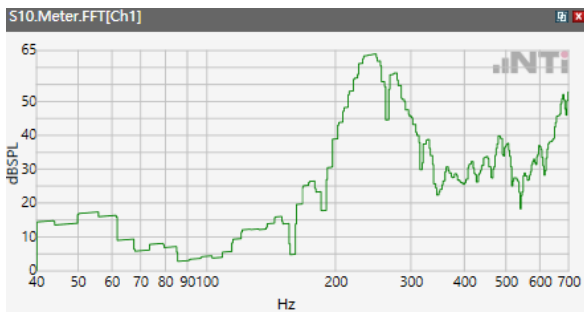
Calculated Value: 28.23 dB Ok

Receive path - distortion and noise 250 WB only

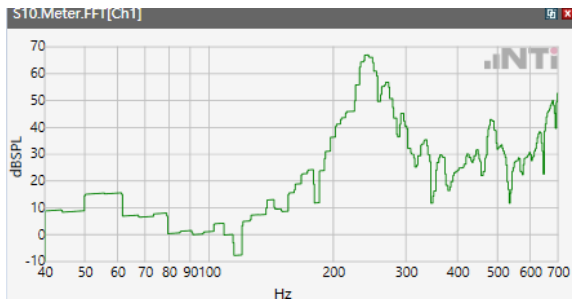
ANSI/TIA 5050-2018 \ 8N HAC OFF \ WB 23.85 kbps\ 5.2 Receive path – distortion and noise\WCDMA II



ANSI/TIA 5050-2018 \ 8N HAC OFF \ WB 23.85 kbps\ 5.2 Receive path – distortion and noise\WCDMA IV



ANSI/TIA 5050-2018 \ 8N HAC OFF \ WB 23.85 kbps\ 5.2 Receive path – distortion and noise\WCDMA V



ANSI/TIA 5050-2018 \ 8N HAC OFF \ WB 23.85 kbps\ 5.2 Receive path – distortion and noise\LTE Band 2

