

Bluetooth earphone

MODEL: TE-D01d

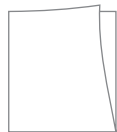
Instruction Manual

Thanks for purchasing TE-D01d bluetooth 5.0 True Wireless Earbuds. Please read carefully the instruction manual before use.

Packing List



Earphone x 1



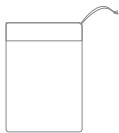
Instruction Manual x 1



Ear tips x 2



USB charging cable x 1

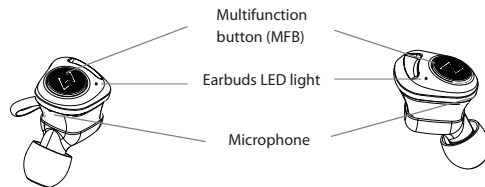
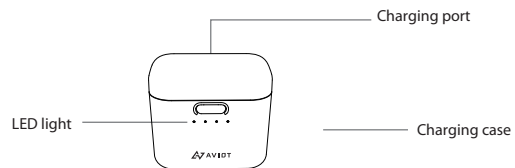


Storage bag x1

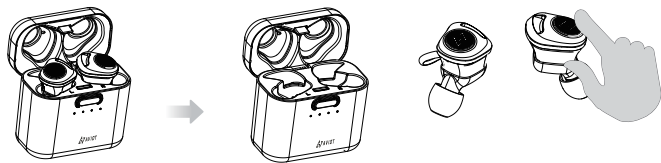


Warranty Card X1

Product Overview

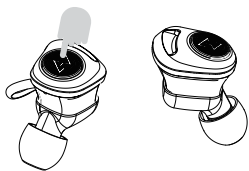


Power On



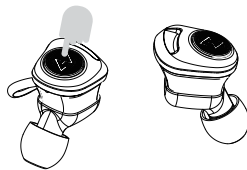
The earbuds will be power on automatically when it takes out from the charging case if the charging case with enough power.

(White indicator light will be light on for one second means "power on")

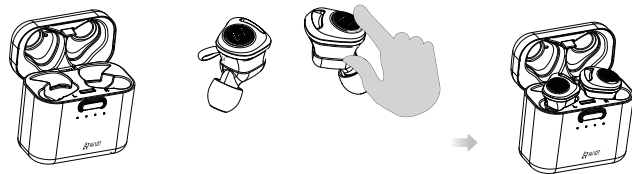


If the power is off, press the MFB button lightly to boot up.

Power Off



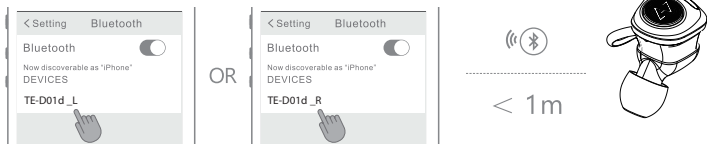
Press the MFB button for 3 seconds and hear "beep" sound twice to shut down.



The earbuds will shut down for recharging when put it back into the charging case if the charging case with enough power.

How to Pairing

For the first time to use, need to connect via mobile phone for pairing. After that, whenever the earbuds is boot up, it will connect automatically.



■ Pairing

1. Take out two earbuds, they'll be power on automatically and enter pairing mode with orange and white indicator lights twinkling alternately.
2. Enable bluetooth of smartphone to search "TE-D01d _L/R" and then click it for pairing.
3. After the setting done, the connection interface of the other earbud should appear on smartphone. Click it to confirm and all settings are done completely.

■ Connection after pairing

1. Take out one earbud, it'll be power on automatically when the white indicator light on and off for one second.
2. Double click the MFB button for pairing mode (the orange and white indicator lights twinkling alternately).
3. Enable bluetooth of smartphone to search "TE-D01d _L/R" and then click it for pairing.
4. After the setting done, the connection interface of the other earbud should appear on smartphone. Click it to confirm and all settings are done completely.

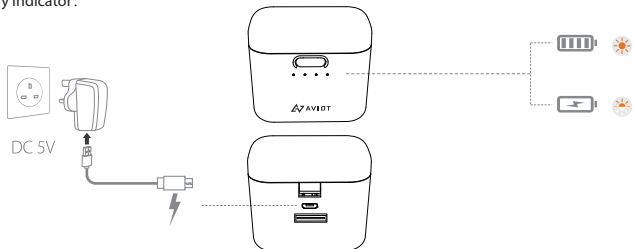
Button Operation



Model	Function	L	R
Music	Play	Single Click	
	Pause	Single Click	
	Next Track	-	Double Click
	Previous Track	-	Three Click
Phone	Answer Call	Single Click	
	Hang Up	Single Click or Put in Charging Case	
	Reject Call	Press 1 Second	
Siri	Enable	Press 1 Second	
	Disable	Press 1 Second	
Volume	Up +	Three Click	-
	Down -	Double Click	-

Charging

■ Battery Indicator:



● ● ● ● 0% - 25%	● ● ● ● 25% - 50%
● ● ● ● 50% - 75%	● ● ● ● 75% - 100%

Case Charging		Earbuds Charging	
Charging	White LED ON	Charging	Orange LED ON
Fully Charged	All LED On	Fully Charged	Orange LED Off

Declarations and Warning

- Release device connected before pairing new one.
- **WARNING!**
Long-term exposure under circumstance of high volume may cause hearing loss permanently. Do volume down if possible.
- In order to avoid affect of Electromagnetic interference, do not use the device at those places which show prohibition of using electronic equipment.
- Do consult the physician before use if using pacemaker or other electrical medical devices.
- This package contains small parts which may cause hazardous problems to children. Always store it away from children.
- Suggest to deposit well at a proper place which may avoid crushing by force.
- Do not disassemble the device to avoid causing a circuit failure which may outbreak of fire or electric shock.
- Keep the product away from wet, water or other liquids that might cause short circuit or malfunctions.
- Do not replace or maintain parts in personal, or may forfeit the right of after sales service.

FCC Statement

Changes or modifications not expressly approved by the party responsible for compliance could void the user's authority to operate the equipment.

This equipment has been tested and found to comply with the limits for a Class B digital device, pursuant to Part 15 of the FCC Rules. These limits are designed to provide reasonable protection against harmful interference in a residential installation. This equipment generates uses and can radiate radio frequency energy and, if not installed and used in accordance with the instructions, may cause harmful interference to radio communications. However, there is no guarantee that interference will not occur in a particular installation. If this equipment does cause harmful interference to radio or television reception, which can be determined by turning the equipment off and on, the user is encouraged to try to correct the interference by one or more of the following measures:

- Reorient or relocate the receiving antenna.
- Increase the separation between the equipment and receiver.
- Connect the equipment into an outlet on a circuit different from that to which the receiver is connected.
- Consult the dealer or an experienced radio/TV technician for help

This device complies with part 15 of the FCC rules. Operation is subject to the following two conditions (1) this device may not cause harmful interference, and (2) this device must accept any interference received, including interference that may cause undesired operation.