

1. Antenna Description:

Antenna type	PCB antenna
Model	NT680plus
Frequency range	2400-2500MHz, 5180-5240MHz, 5745-5825MHz
Manufacturer	Shenzhen Foxwell Technology Co., Ltd.
Address	5/F, Plant C, Baocheng 71st Zone, Xin'an Street, Baoan District, Shenzhen, China
ANT Peak Gain	2400-2500MHz: 0.81 dBi 5180-5240MHz: 1.81 dBi 5745-5825MHz: 4.45 dBi

2. Antenna Photo:

Length: 14.67mm
Width: 4.72mm



3. Test Equipment & Conditions

3.1 Test instrument

VSWR is tested using Agilent E5071B connected to a hand mechanism, and the status is free space.

3.2 Test environment and methods

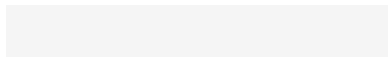
Dark room specifications: ETS-743

TD-SCDMA test equipment: StarPoint SP6010/Agilent 8960

LTE-TDD/FDD-SCDMA test equipment: StarPoint SP8011/CMW500

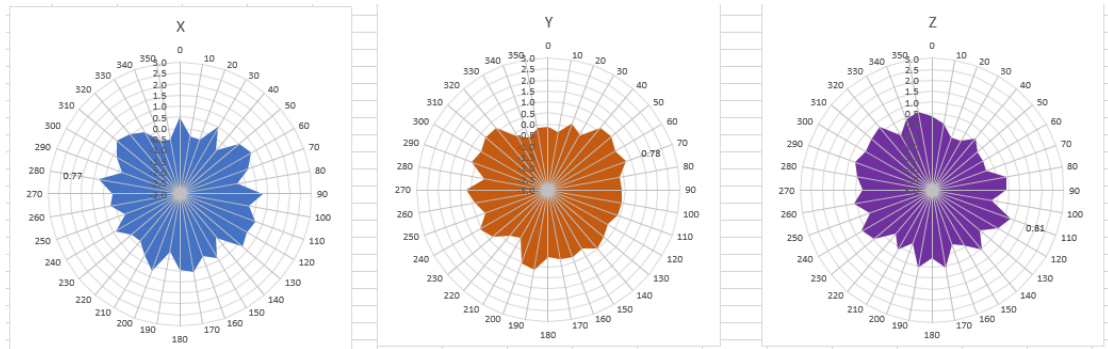
WCDMA/GSM/CDMA test equipment: Agilent 8960

Passive efficiency testing equipment: Agilent Technologies E5071B

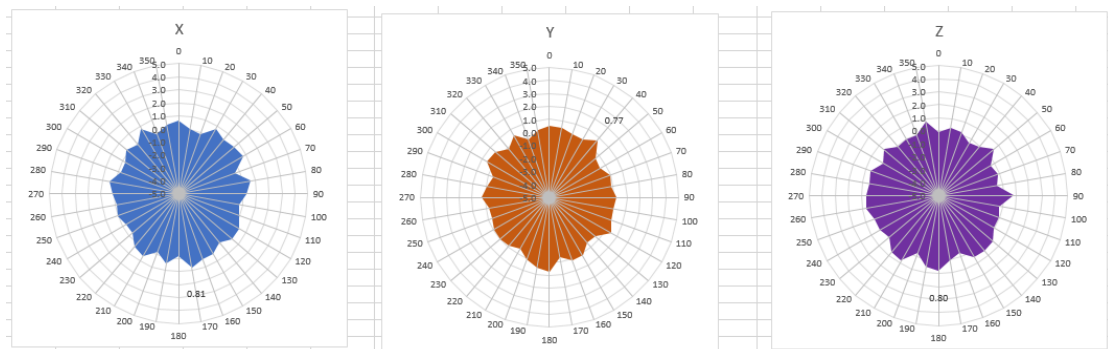


4 . Antenna Radiation Pattern

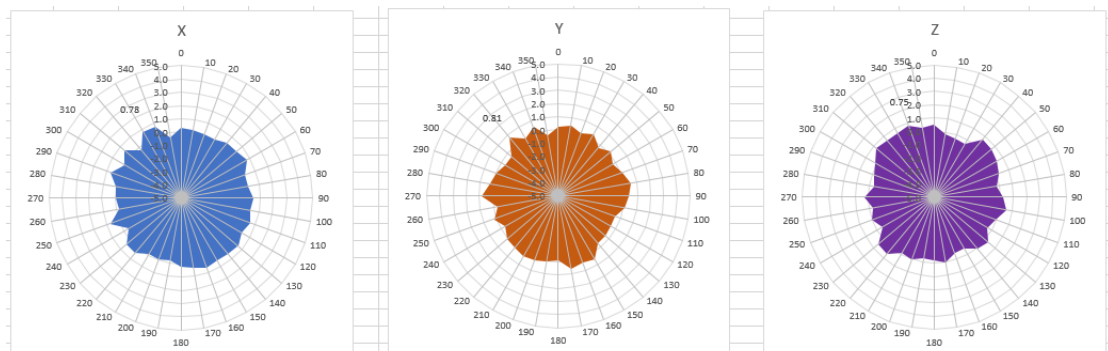
2400MHz



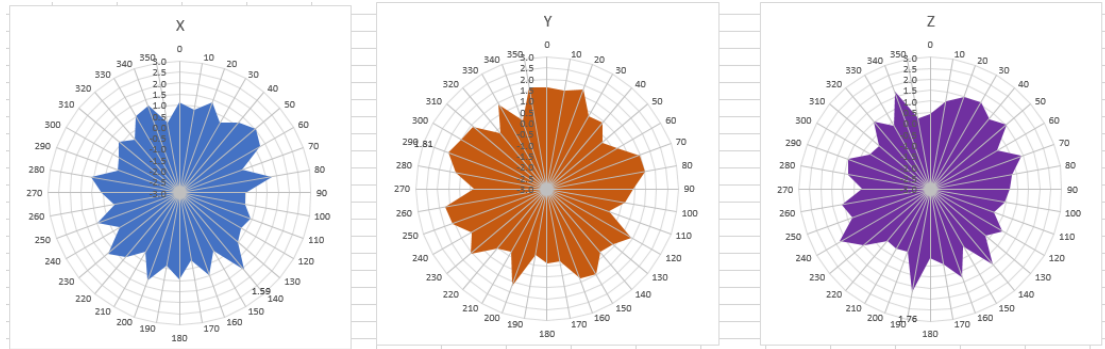
2450MHz



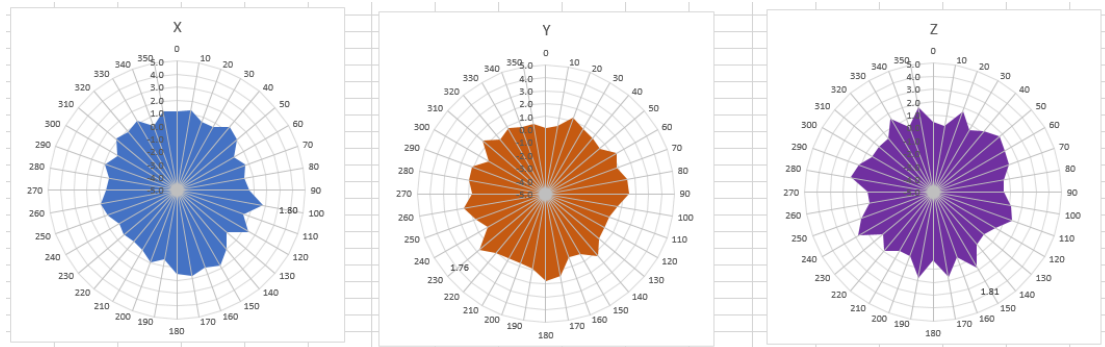
2500MHz



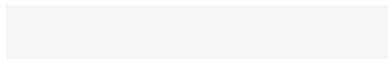
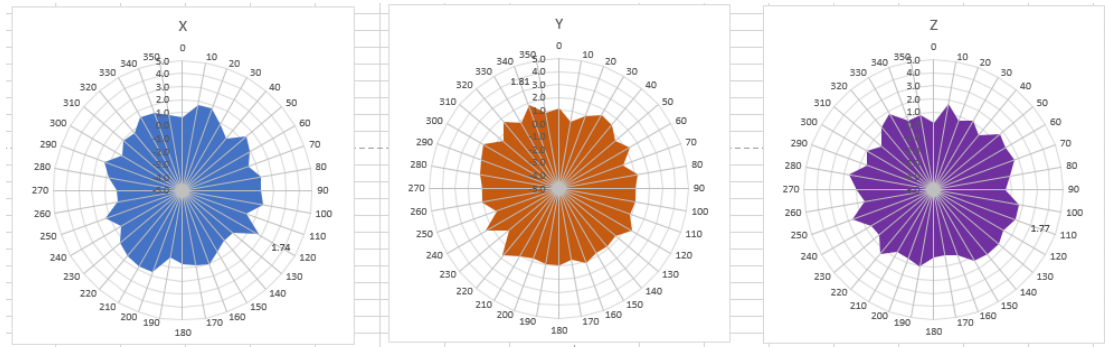
5180MHz



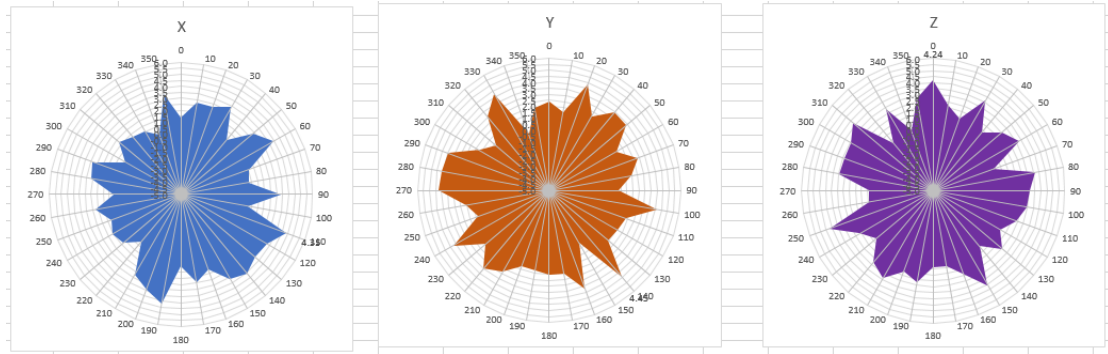
5220MHz



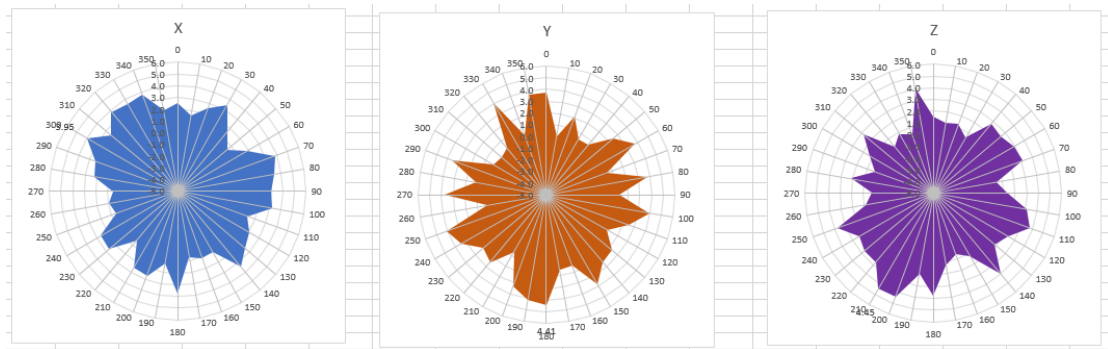
5240MHz



5745MHz



5785MHz



5825MHz

