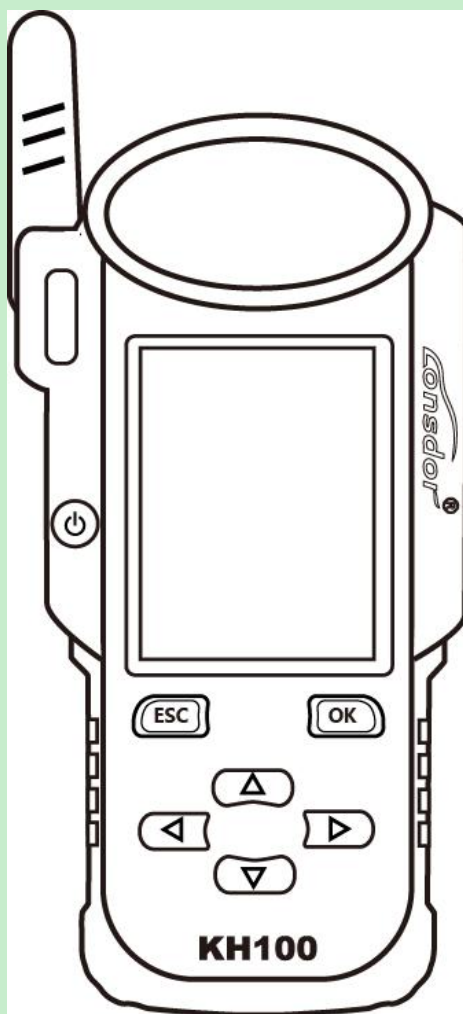


# KH100 FULL-FEATURED KEY MATE

## USER MANUAL



★ Please read this instruction manual carefully before use.

---

## COPYRIGHT STATEMENT

**All rights reserved!**

The entire copyrights and intellectual property rights of Lonsdor, including but not limited to products or services issued by itself or co-issued with partner company, and the materials and software on the related websites of the company, are protected by law. Without the written permission of the company, no unit or individual may copy, modify, transcribe, transmit or bundle or sell any part of the above products, services, information or materials in any way or for any reason. Anyone who infringes the copyrights and intellectual property rights will be held accountable in accordance with the law!

### **Product**

The Lonsdor KH100 full-featured key mate and related materials are only used for normal vehicle maintenance, diagnosis and testing, and should not be used for illegal activities. If you use our products to violate laws and regulations, the company does not assume any legal responsibility. This product has certain reliability, but does not exclude the possible losses and damages, the risks arising from this shall be borne by the user, and our company does not bear any risks and liability.

Declared by: Lonsdor Dept of Legal Affairs

## SAFETY INSTRUCTION

Before use this product, please read this instruction carefully to know how to use it properly.

- (1) Do not hit, throw, acupuncture the product, and avoid falling, squeezing and bending it.
- (2) Do not use this product in damp environment such as bathroom, and avoid it being soaked or rinsed with liquid. Please turn off the product in circumstances when it's forbidden to use, or if it may cause interference or danger.
- (3) Do not use this product while driving a car, so as not to interfere with safety driving.
- (4) In medical establishments, please follow the relevant regulations. In areas close to medical equipment, please turn off this product.
- (5) Please turn off this product near high-precision electronic equipment, otherwise the equipment may malfunction.
- (6) Do not disassemble this product and accessories without authorization. Only authorized institutions can repair it.
- (7) Do not place this product and accessories in appliances with strong electromagnetic fields.
- (8) Keep this product away from magnetic equipment. The radiation from magnetic equipment will erase the info/data stored in this product.
- (9) Do not use this product in places with high temperature or inflammable air (such as near gas station).
- (10) When using this product, please comply with relevant laws and regulations, and respect the privacy and legal rights of others.

---

## TABLE OF CONTENTS

---

COPYRIGHT STATEMENT .....	1
SAFETY INSTRUCTION .....	2
CONTENTS .....	3
1.0 Registration guide .....	4
2.0 Product overview .....	5
2.1 Product introduction .....	5
2.2 Product features .....	5
2.3 Product parameter .....	5
2.4 Device components .....	6
2.5 Function introduction .....	7
2.5.1 Immobilization .....	7
2.5.2 Product info .....	8
2.5.3 Product upgrade .....	8
2.5.4 Manual activation .....	9
3.0 After-sales service .....	11
Warranty card .....	13

## 1.0 Registration guide

### New user

- ① For the first use, please prepare a common call phone or email to help complete activation process, click OK to start.
- ② Boot the device and enter registration activation process.
- ③ Input user name, password. Confirm password, cellphone number or email to obtain verification code. Then input the code to submit registration.
- ④ Account registered successfully, it will take 5s to bind the device.
- ⑤ Successful registration, enter the system.

### Registered user (who has registered Lonsdor products before)

- ① For the first use, please prepare a registered call phone or email to help complete activation process, click OK to start.
- ② Boot the device and enter registration activation process.
- ③ Input your registered mobile number or email, password to obtain verification code. Then input the code to submit login.
- ④ Account login succeeded, it will take 5s to bind the device.
- ⑤ Successful registration, enter the system.

In addition, users who have already registered Lonsdor' s product can directly choose [registered user] to activate account.

## 2.0 Product overview

### 2.1 Product introduction

Product name: KH100 full-featured key mate

Description: KH100 is a versatile handheld smart device, launched by Shenzhen Lonsdor Technology Co., which includes special features and functionality, such as: identify&copy chip, access control key, simulate chip, generate chip, generate remote, generate smart key, detect remote frequency, detect infrared signal, search induction area, detect IMMO, unlock Toyota smart key and etc.

### 2.2 Product features

- ※ Modern appearance design, in line with the operating habits of the public.
- ※ Device system comes with operation instructions, easier for you to use.
- ※ It covers almost all the functions of the similar products in the market.
- ※ Built-in super sensor to collect data(over-range data collection).
- ※ Exclusive support for 8A(H chip) generation.
- ※ Built-in WIFI module, can connect to network at any time.

### 2.3 Product parameter

Device dimension: 193mm\*88mm\*24mm

Screen size: 3.5 inch

Screen resolution: 320X480

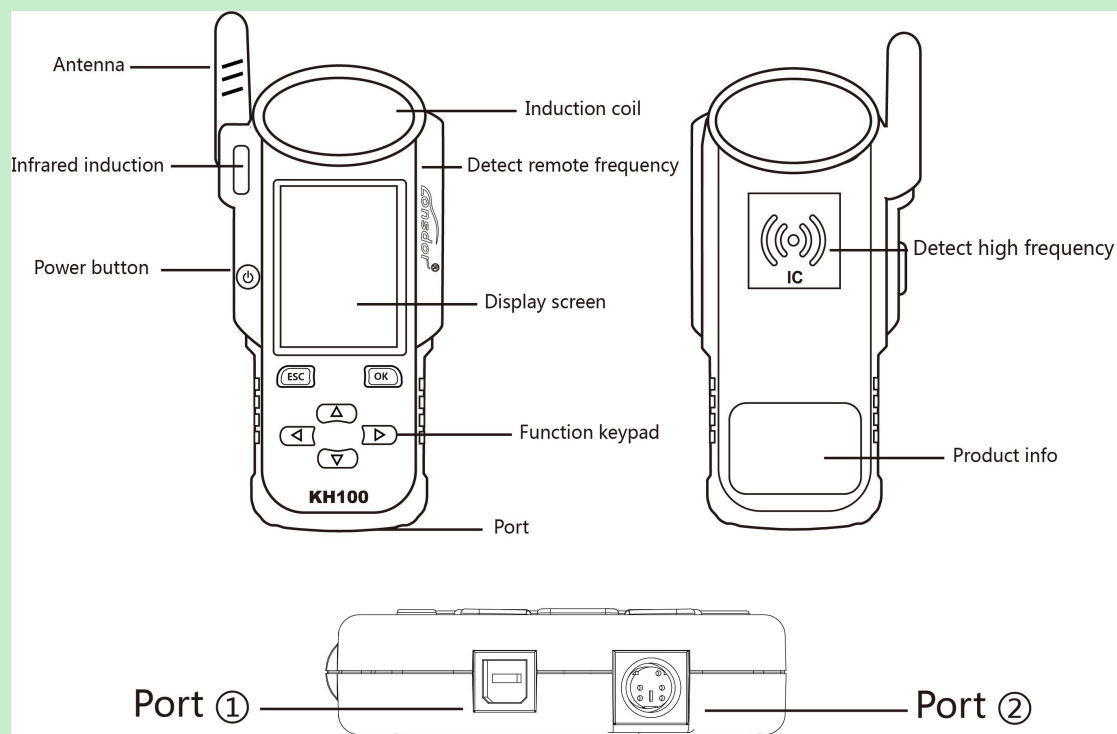
SD capacity: 256M-32G

Main line interface: DB15

USB port: Type-C

Battery: 2000mAh

## 2.4 Device components



Name	Notes
Antenna	Sense simulated chip and detect ignition coil
Induction coil	To identify, copy, generate key chip or remote, etc.
Display screen	2.8-inch color screen, resolution: 320X480
Port 1	USB-B port
Port 2	Dedicated port for remote' s connector
Power button	Power on/off device, click to switch to power-saving mode when using.
Remote frequency detection	Put remote in this position to detect its frequency.
High-frequency detection	Identify and copy IC card.

## 2.5 Function introduction

When complete the registration activation, it enters below menu interface:



### 2.5.1 Identify Copy

Enter this menu, follow system prompts to operate (as shown).



### 2.5.2 Access Control Key

Enter this menu, follow system prompts to operate (as shown).





Identify ID card



Identify IC card

### 2.5.3 Simulate Chip

Put KH100' s antenna at the ignition switch(as shown), choose the corresponding chip type to simulate. This device supports below chip types:

①4D      ②46      ③48



#### 2.5.4 Generate Chip

Put below types of chip into the induction slot(as shown), choose the corresponding chip to operate according to the prompts.

This device supports below chip types:

- |       |     |     |     |
|-------|-----|-----|-----|
| ①4D   | ②46 | ③48 | ④T5 |
| ⑤7935 | ⑥8A | ⑦4C |     |



Note: some chip data will be covered and locked.

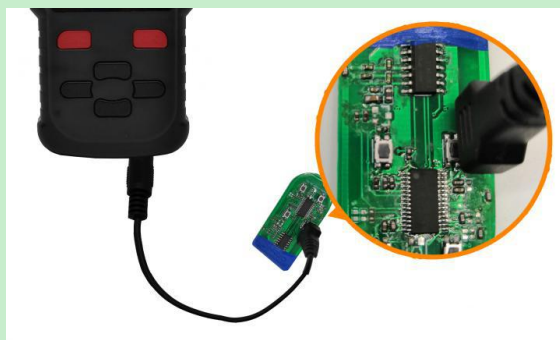
#### 2.5.5 Generate Remote

Enter this menu, choose the corresponding vehicle type to generate remote control(as shown) according to different regions.



#### 2.5.6 Generate smart key

Enter this menu, choose the corresponding vehicle type to generate smart key/card(as shown) according to different regions.



### 2.5.7 Identify Coil

#### ① Search smart induction area

Put KH100' s antenna close to the pre-determined position. If inductive signal is identified, the device will continuously make sounds, please try to find the correct position.



#### ② Detect IMMO

Put KH100' s antenna close to key identification coil, and use key to turn ignition ON. When KH100 buzzer beeps, it means signal is detected.



### 2.5.7 Remote Frequency

Enter this menu, put remote control at the device' s induction area to detect remote frequency.

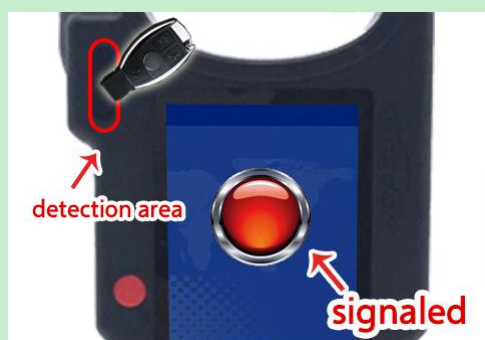


### 2.5.8 Special function

Include: detect infrared signal, detect ignition coil, unlock Toyota smart key, inter-conversion between ID63 and ID83, etc. More functions, to be continued...

#### ① Detect infrared signal

Put remote control at the infrared signal detection area, when the screen light is on, it indicates there is infrared signal, otherwise there is no (see below pic).



P1: signaled



P1: no signal

#### ② Unlock Toyota smart key

Put in smart key, click OK to operate.



## 2.6 Upgrade

Enter settings menu, and connect the device to network, then choose [check for updates], one-click online upgrade.

### 3.0 After-sales service

(1) Our company will provide you with excellent after-sales service and warranty service within agreed time.

(2) The warranty period lasts 12 months from device activation date.

(3) Once the product is sold, the return and refund will not be accepted if there is no quality problem.

(4) For product maintenance beyond the warranty period, we will charge labor and material costs.

(5) If the device is faulty or damaged due to any of the following reasons, we reserve the right not to provide service based on the agreed terms (but you can choose paid service).

※ The device and components are beyond the warranty period.

※ Users find that the product appearance is flawed or damaged, but has no quality problem.

※ Counterfeit, without certificate or invoice, our official back-end system can not authenticate the device info.

※ The product is damaged due to not following the instructions in this manual for operation, use, storage, and maintenance.

※ Damage caused by private disassembly or damage caused by repair and maintenance of maintenance company unauthorized by Lonsdor.

※ Liquid inflow, moisture, falling into water or mildewing.

※ The newly purchased device works normally without any damage when unpacked for the first time. But with the prolonged time of use, screen damage occurs, such as screen explosion, scratching, white spots, black spots, silk screen, touch damage, etc.

※ The use of special tools and accessories not provided by our company.

※ Force majeure.

※ For the man-made damaged device, if you decide not to repair after we disassemble it and make a quotation, the device appears unstable condition (such as: unable to boot, crash, etc) when you receive it.

※ Private cracking of the system causes function changes, instability, and quality damage.

(6) If the auxiliary parts and other parts (other than the main components of the device) are faulty, you can choose the paid repair service provided by our company or our authorized customer service outlets.

(7) We will perform repair after receiving your device and confirming its problems, so please fill in the problems in details.

(8) After repair finished, we will return the device to customer, so please fill in the correct delivery address and contact number.

(9) Customers who needs to send the device for repair, shall bear the cost, such as round-trip delivery cost, transportation cost and etc. If the device is damaged in the process of delivery, our company will not bear relevant fees. In particular cases, we will assist the customer to claim for compensation against the shipping company..

(10) We do not provide sales invoice to individual in any form. If need it, please ask the dealer you purchased from to invoice you.

(11) Please keep the warranty card properly, and fill in the card when returning your device for repair, so that we can deal with the relevant work procedures (the warranty card attached to the end of the manual).

(12) After-sales service hotline: 400-966-9130

After-sales QQ: 4009669130

Service hours: Monday to Friday 9:00 – 12: 00, 14: 00 – 18: 00

Saturday, Sunday 9: 30 – 17: 00; legal holidays excluded.

This device complies with Part 15 of the FCC rules. Operation is subject to the following two conditions: 1) this device may not cause harmful interference, and 2) this device must accept any interference received, including interference that may cause undesired operation.

Note: This equipment has been tested and found to comply with the limits for a Class B digital device, pursuant to part 15 of the FCC Rules. These limits are designed to provide reasonable protection against harmful interference in a residential installation. This equipment generates uses and can radiate radio frequency energy and, if not installed and used in accordance with the instructions, may cause harmful interference to radio communications. However, there is no guarantee that interference will not occur in particular installation. If this equipment does cause harmful interference to radio or television reception, which can be determined by turning the equipment off and on, the user is encouraged to try to correct the interference by one or more of the following measures:

- Reorient or relocate the receiving antenna.
- Increase the separation between the equipment and receiver.
- Connect the equipment into an outlet on a circuit different from that to which the receiver is connected.
- Consult the dealer or an experienced radio/TV technician for help.

Changes or modifications not expressly approved by the party responsible for compliance could void the user's authority to operate the equipment.

#### FCC Radiation Exposure Statement

This device complies with FCC RF radiation exposure limits set forth for an uncontrolled environment. This transmitter must not be co-located or operating in conjunction with any other antenna or transmitter.