

# Features

## Access

**Master PIN Code** Set a Master PIN code via the PopuLife app which is permanently active. This can be used to unlock keybox via keypad.

**User PIN Code** Generate up to 285 custom PIN codes, each with selected duration, which can be used to unlock keybox via keypad.

Up to 100 PIN codes can be valid at the same time. Choose between one-time, permanent or duration PIN codes.

**Master Bluetooth Key** Open the keybox via Bluetooth Key on the app.

**User Bluetooth Key** Generate Bluetooth keys via the app, each with selected duration. They can be sent to other app users to open keybox via Bluetooth.

Bluetooth Keys can be temporarily disabled or deleted.

## Cloud Backup of Master Access

Master access is tied to user account instead of phone. Any phones logged in to user account will have full control of the lock.

## Locking

Simply close the keybox, and it locks automatically after 1 second.

## Unlocking

### PIN Code

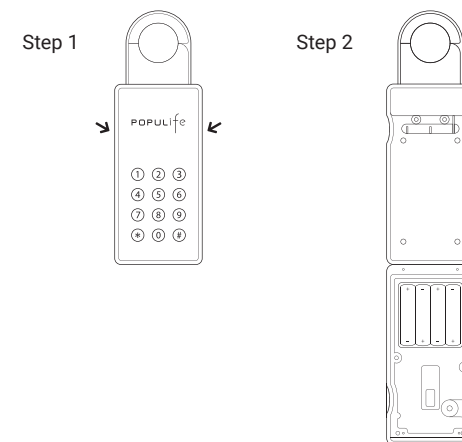
Key the PIN code (generated from app) on the keypad, and the Keybox unlocks. Open the Keybox by placing fingers at the neck of the Keybox (As shown by the arrow in the image below), then pulling the front panel of the Keybox towards you.

If the number you entered is incorrect, you can press the # key to re-enter. If your last 8 digits are correct and the total number of clicks no more than 16 digits, the Keybox will be unlocked.

### Bluetooth Key

#### Basic Unlock

Run the PopuLife app and select the Bluetooth Key tab. Press unlock on the app. Approach the Keybox and it will unlock once it is within range (about 10 metre). Open the Keybox as per diagram.



# Using keybox on app

## 1. Set up keybox on app

**Download Populife app** from App Store/Google Play

**Register** a new account or **login** with an existing account on app

### Pairing

Ensure that the Keybox is kept open for this section

Select Lock > Add lock Click "+", Add New Lock to New Home (or Existing Home for existing user) > If new home, create a New Home before proceeding

Tap on the Keybox keypad to light it up.

Choose the Keybox from the list to initiate pairing

App will show "Enter the lock name" Name your lock, Please click "Complete".

## 2. Check that Keybox has been paired successfully

Select Lock (ensure that the keybox is currently locked)

Tap on Unlock icon under to Keybox name

Keybox unlocking indicates that it has been paired successfully.

**On the rare occasion that pairing is unsuccessful, here are some steps you can take**

- Try with a different mobile device, using the same username and password
- Update your phone's Operating System to the latest version
- Restart the bluetooth and internet connection on your mobile device
- Restart PopuLife's application on your mobile device
- Switch to brand new batteries

## 3. Set Master PIN

Go to the **Lock settings** page (via Lock by clicking on the Unlock icon under your listing)

Click **Admin passcode**

**Enter the new Master PIN code**, between 6-9 digits. **Re-enter it** > **Save**

Keybox will lock to indicate that Master PIN code has been set successfully.

## 4. Adding new User PIN

Go to the **Send passcode** page (via Lock by clicking on the Unlock icon under your listing)

Click on Create **Permanent, Period, One-time, Clear, Customize, Cyclic**.

Please give the passcode a name. Click **Generate passcode**

Click **Passcode**, you should see the new user code.

**Note: One Time and Permanent PINs must be used within 24 hours of PIN creation. Duration PIN must be used within 24 hours of PIN code start date.**

## 5. Customize User PIN

If you are using the **Permanent, Period, One-time, Clear, Cyclic** methods to add your PIN, you can operate from anywhere.

If you are using **Customize** to create, then you need to complete the settings within 10 meters of the Keybox.

## 6. Removing used PIN

Click **Passcode**, you should see the all user code. (via Lock by clicking on the Unlock icon under your listing)

Under **List of PIN codes**, select the user code you would like to delete

Swipe PIN to the left

The user code will be removed from your app.

## 7. View access logs

Go to the **Lock** page > **Records**

Access logs for bluetooth keys and PIN codes will be displayed.

Do note that only successful Keybox unlocks will be logged.

Please note that you'll need to turn on Bluetooth each time you update the PIN codes of the unlock records, get closer to the Keybox and transfer the unlock records via Bluetooth.

You can purchase the Gateway if you need to get the unlock records, Keybox will send the unlock records to your mobile phone via the Internet, so you can get the unlock information at any time.

## 8. Gateway

You can purchase the gateway. "General" page > Click "Gateway" > click "+" on the upper right corner

Enter the WIFI name, password and the Gateway name, click "Next", Settings (long press the set button).

You can find instructions in the App, click "Next" to complete.

## 9. Reset PIN

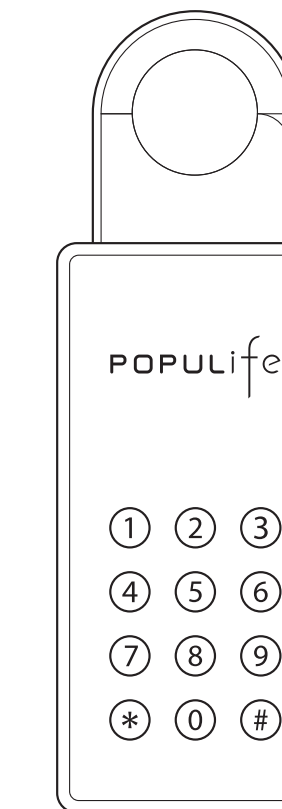
Go to the Passcode page (via Lock by clicking on the Unlock icon under your listing)

Click the function button in the top right corner.

Click on Reset passcode

Click Reset Within 2 seconds, press any key on your Keybox

Congrats on your shiny new  
**Smart Keybox**



www.populife.co

# Quick-start guide

## Test your Keybox

Tap any key + 1234# to unlock the Keybox. Your Keybox is now ready for set up!

## Set up your Keybox as shown in the section 'Using keybox on app'

### To unlock Keybox

Key in generated PIN code, or Use Bluetooth Unlock on app

### To lock Keybox

Close the Keybox and it will lock automatically after 1 second

## App Programming

### 1. To change Master PIN code

Lock > Lock settings > Click Admin passcode > Enter PIN code (6-9 digits) > Save

### 2. To create custom PIN code

Lock > Select Send passcode > One- Time PIN or Duration PIN > Choose Duration (for Duration PIN) > Enter visitor name > Add PIN

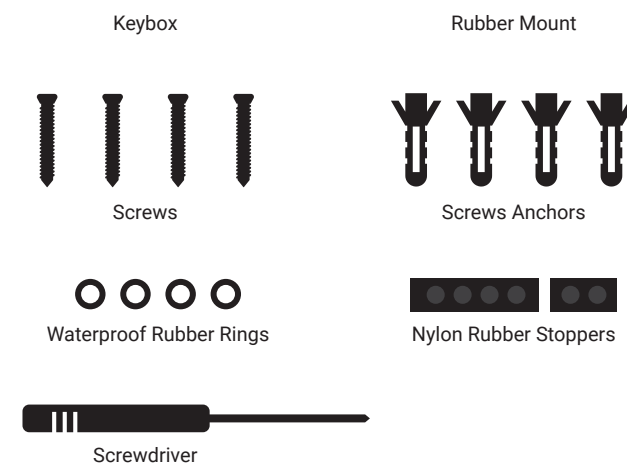
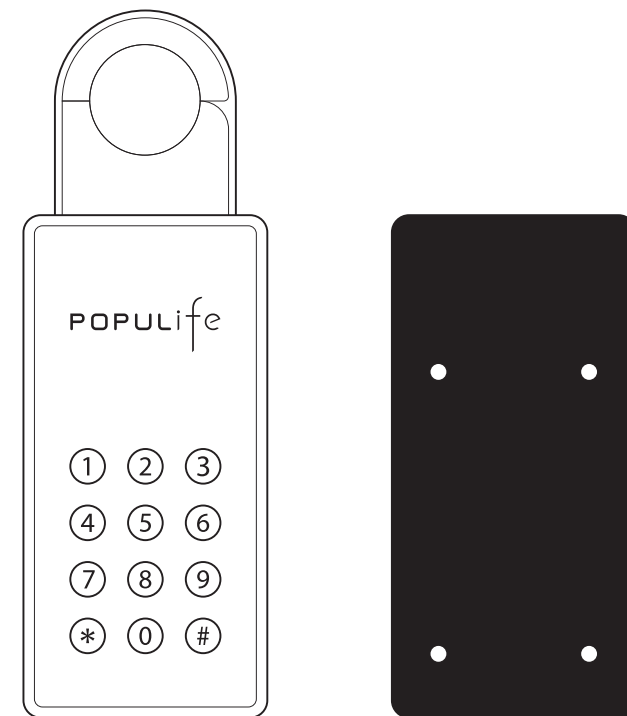
### 3. To create and share Bluetooth Key Lock > Select Send eKey > Create Key > Send Key

### 4. Reset lock

Lock > Select Passcode > Click Upper right corner function button > Select Reset passcode > Enter the login password > OK

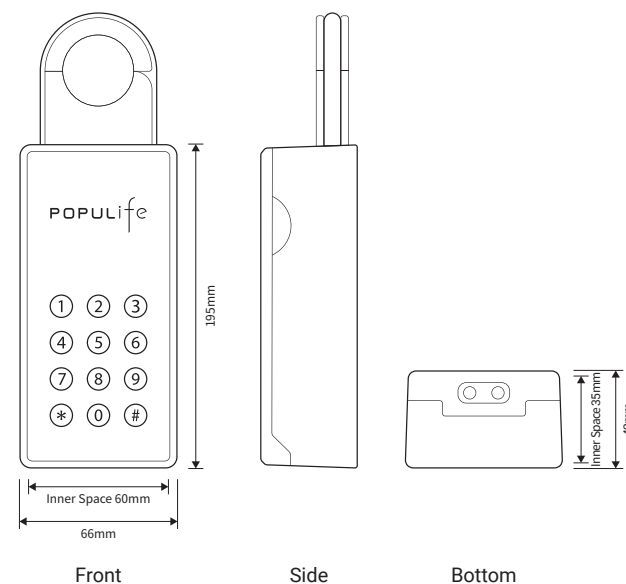
**Note:** Clearing PIN list will remove all generated PIN codes, but Master PIN will remain.

# What's in the Box



# Specifications

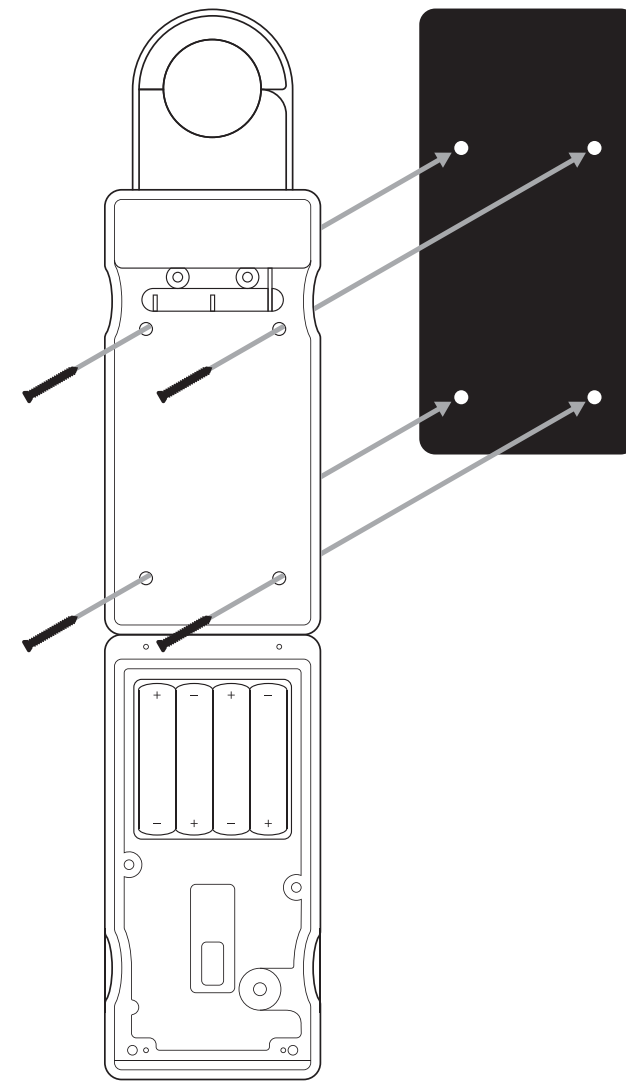
<b>Model</b>	PopuLife Smart Keybox K1
<b>Dimensions</b>	195(H) x 66(W) x 42(T)mm Inner space of shackle 60(W) x 35(T)mm
<b>Material</b>	Zinc Alloy, Steel, Plastic, Silicon Rubber
<b>Weight</b>	1.2kg
<b>Wireless Protocol</b>	Bluetooth 4.0
<b>Batteries</b>	4 x AAA
<b>Unlock Mechanism</b>	Bluetooth, PIN code



This device complies with Part 15 of the FCC Rules. Operation is subject to the following two conditions: (1) This device may not cause harmful interference, and (2) This device must accept any interference received, including interference that may cause undesired operation.

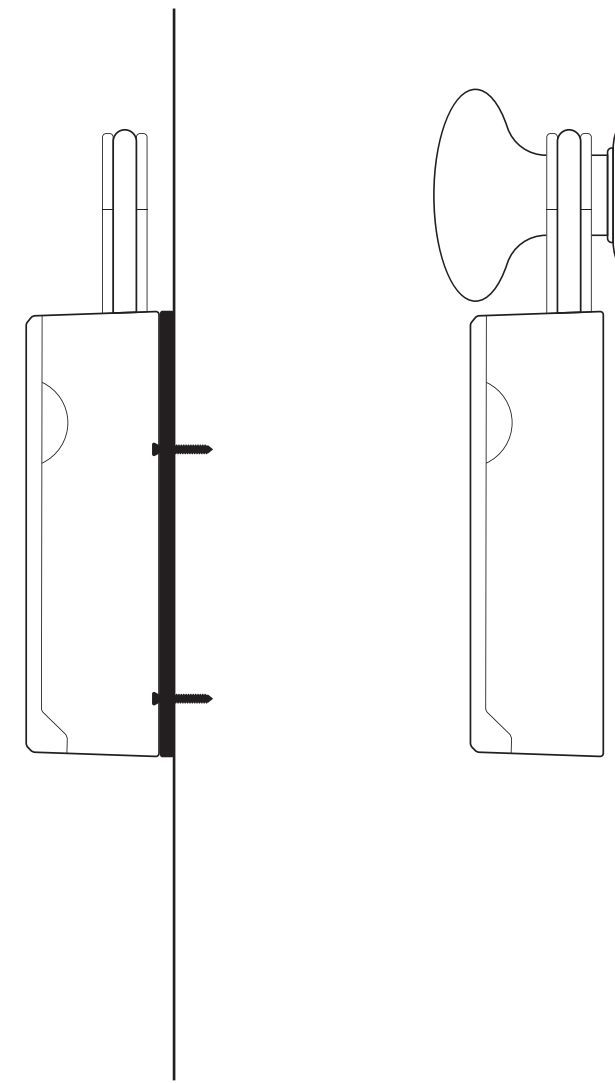
# Installation

## Mount it on a surface



## Side View

## To hang on a doorknob



# Security

## Automatic Re-lock

If Keybox is unlocked but remains un-opened for 60 seconds, it will automatically re-lock.

## Security Alarm

If the Keybox is not closed properly, it will beep to indicate that it is not secure.

## Decoy Code

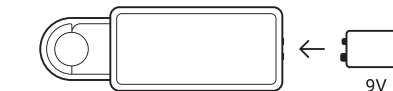
Up to 8 decoy digits can be entered prior to the actual PIN code to deter guessing of the PIN code.

## Battery

4 AAA Alkaline batteries can allow up to 10,000 keybox open and close operations (approx. 12 months)

## Emergency Jump Start

If battery power is drained, an external 9 Volt battery can be used to provide emergency power. The 2 pins of the battery must be aligned with the 2 pins on the Keybox as shown in the diagram below.



POPULife

For enquiries

Facebook [www.facebook.com/populife.co](http://www.facebook.com/populife.co)

Email us [populife@outlook.com](mailto:populife@outlook.com)

[www.populife.co](http://www.populife.co)

FCC Warning Statement Changes or modifications not expressly approved by the party responsible for compliance could void the user's authority to operate the equipment. This equipment has been tested and found to comply with the limits for a Class B digital device, pursuant to Part 15 of the FCC Rules. These limits are designed to provide reasonable protection against harmful interference in a residential installation. This equipment generates uses and can radiate radio frequency energy and, if not installed and used in accordance with the instructions, may cause harmful interference to radio communications. However, there is no guarantee that interference will not occur in a particular installation. If this equipment does cause harmful interference to radio or television reception, which can be determined by turning the equipment off and on, the user is encouraged to try to correct the interference by one or more of the following measures:

- Reorient or relocate the receiving antenna.
- Increase the separation between the equipment and receiver.
- Connect the equipment into an outlet on a circuit different from that to which the receiver is connected.
- Consult the dealer or an experienced radio/TV technician for help.

This device complies with part 15 of the FCC Rules. Operation is subject to the following two conditions: (1) This device may not cause harmful interference, and (2) this device must accept any interference received, including interference that may cause undesired operation.