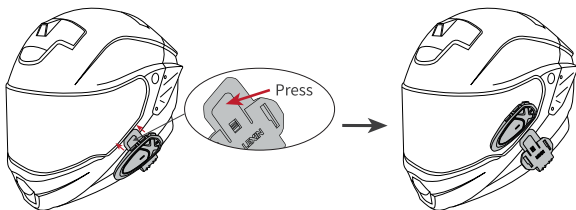




Remove The GTX Unit

To remove the main unit from the helmet, ensure the headset is not connect with the main unit then remove the main unit and the mounting bracket together. (As shown below)



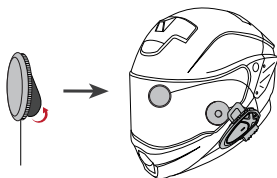
Installing Speakers

Note: The speaker with the shorter wire is for the left ear, and the speaker with the longer wire is for the right ear. This will also enhance the FM radio reception.

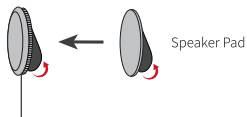
Step 1: Peel off the speaker 3M tape, stick it into the helmet's inner padding.

Step 2: Push the speakers firmly against the velcro pads. If the helmet has deep ear pockets, you can use the provided spacers to closer the speakers.

Step 3: Hide the wires between the helmet liner and shell. (As shown below)



Note: We are equipped with extra speaker pads. There may be some helmets with deep speaker pockets, so you can add the extra speaker pads to increase the thickness of the speakers to make the speakers closer to your ears.

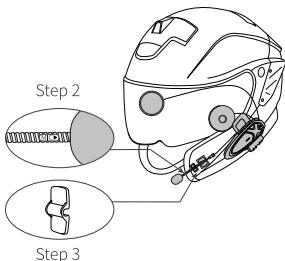
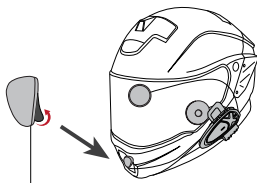


Installing Microphone

Note: The button microphone and boom microphone can be interchanged between full-face or open-face helmets. Choosing between the two is based on your preference and what fits best in the helmet(s).

Full-face Helmet/Button Microphone

- Step 1: Locate an area in the center of the mouth section of the helmet to install and adhere half of the microphone velcro pad.
- Step 2: Attach the button microphone to the attached velcro.
- Step 3: Connect it to the headphone connector from the left.



Open Face Helmet/Boom Microphone

- Step 1: Adhere one half of the velcro pad to the base of the microphone and the other half to the inside of the helmet underpadding.
- Step 2: Adjust the microphone's direction so that the triangular mark points towards your mouth.
- Step 3: Use the boom microphone holder for additional support to the microphone if necessary. (As shown on the left)

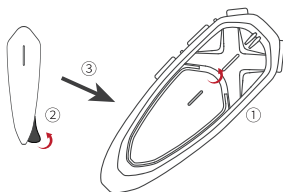


Replace the pattern shell

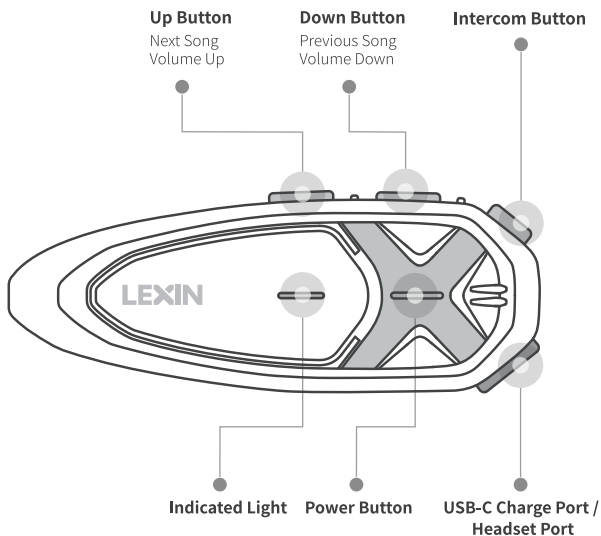
Step 1: Remove the old pattern shell from the unit;

Step 2: Tear the 3M tape of the new pattern shell;

Step 3: Attach the pattern shell to the unit.



General Operation Instructions





Power On/Off

Power On: Press and hold the Power Button for 1 second.

The LED will blink blue. Voice prompt "Power On " and the current battery life.

Power Off: Press and hold the Power Button for 1 second.

The LED will blink red. Voice prompt "Power Off."

Battery Charging:

Plug the USB-C cable into the USB-C port to charge by any DC 5V power supply, such as mobile phone charger, computer, laptop or power bank, Etc. The LED turns red while charging and then turns blue when the main unit is fully charged. It takes about 2.5 hours to charge entirely.

Battery Life Prompt: While in standby mode, double-click the up Button, the GTX will prompt the current battery life.

It will prompt one of five levels:

100%, 80%, 50%, 30%, LOW.

Note: While the battery capacity is below 30%, the device will notify you every 20 minutes until the device powers off. It indicates that around 1-1.5h of use remains.

Pairing GTX with Bluetooth Devices

Note: A single GTX can connect with two mobile phones and one other Bluetooth device at once. It can automatically connect to your last paired device as long as Bluetooth is enabled or in standby mode without being connected with any devices.

Pairing Phone

Step 1: With the unit powered off, press and hold the Power Button for 5 seconds until the led flashes red and blue , to enter pairing mode.

Step 2: Go to Bluetooth settings on your phone, Select "GTX".

Some mobile phones may need a PIN. Enter "0000" for the PIN if required.

Step 3: Please confirm in your phone if the pairing is complete.

Note: The LED will blink blue and voice prompt pairing successfully, indicating the connection is complete.

Pairing Bluetooth GPS Navigation

Step 1: While powered off, press and hold the Power Button for about 5s until the LED light flashes blue and red alternately , the device will prompt "pairing" to enter pairing mode. When the pairing is completed, the indicator light will blink blue, and the voice



prompt "pairing successful."

Step 2: Follow pairing instructions for your specific GPS Navigation to connect to GTX.

Note: You will be able to listen to the sound of GPS navigation once paired.

Phone Calls

Answer Phone Call: Click the Power Button to answer a phone call.

End Call: Click the Power Button to end the call.

Reject Phone Call: Double-click the Power Button to reject the incoming phone call.

Answer The Second Call: When the phone is in a call, a second call comes in, click the Intercom Button to answer.

Reject The Second Call: When the phone is in a call, a second call comes in, double-click the Intercom Button to reject.

Voice Dial: While the device is paired with your phone, double-click the Power Button to activate Siri or S-Voice. Speak the name from your phone list to dial.

Preset On/Off Automatic Answering: In standby mode, press and hold the volume Up Button for about 6 seconds, the blue light quickly flashes three times, indicating that automatic answering is on.

In standby mode, press and hold the volume Up Button for about 6 seconds, the red light quickly flashes three times, indicating that automatic answering is off.

Auto Answer Phone Call: When the automatic answering mode is on, it will answer incoming calls after 12 seconds if no one picks up the phone.

Note: The default is to disable the automatic answering.

After completing the automatic answering setting, it will save the setting memory, so next time you turn on the device don't need to set it again.

Music And Volume Control

Volume Control

Click the Up/Down Button to adjust the volume.

Note: In music playing status/GPS navigation status/Intercom status, When two audios are output simultaneously, adjust the volume to control the output volume of the two audio signals simultaneously.

If you want to control only one of the audio, Pause one audio output and adjusting the volume of another audio would work well.

(For example, when you are listening to music and in the intercom at the same time when adjusting the audio, the audio of the intercom and music increases or decreases simultaneously. If you only need to adjust the intercom volume, you need to pause



the music. If you only need to adjust the music volume, You need to exit the intercom first.)

Note: Individual audio adjustment is not available for phone and intercom working simultaneously

Play/Pause

With the unit powered on, click the Power Button to play a song.

When the music is playing, click the Power Button to pause.

Note: In multiple audio modes (when in intercom talk and playing music simultaneously), pausing music needs to double click the power button.

Change Song

When the music is playing, double click the UP button for the next song, double click the DOWN button for the previous song.

Turn on/off the multiple audio functions

In the standby state, long press the down button for about six seconds to activate /inactivate the multiple audio functions.

Note:

1. The default is to inactivate the multiple audio functions. You need to reset everything while using.
2. The multiple audio functions only support using a 2-ways intercom. It is unusable in more than two ways intercom.

Bluetooth Intercom Pairing & Connection

GTX Bluetooth headsets are able to full-duplex Bluetooth intercom talk, a pre-pairing group internal intercom, divided into 4-way intercom mode and multi-way intercom mode, multi-way intercom mode can achieve up to 10 riders to be connected.

Note: Before Bluetooth group intercom pairing, the devices must be in the same mode (four-way intercom mode or multi-way intercom mode). If the devices are not in the same mode, they will not be able to pair.

Clear Bluetooth Pairing Record

Press and hold the Up Button and the Down Button at the same time for 2 seconds. The indicator light flashes red.

Everytime you turn on the GTX device, the default is 4-way intercom mode, and to switch into the multi-way intercom mode which is for more than five riders (including five riders), in the standby state, you need to long press down button for about 6 seconds, there will be a beep and the indicator light flashes red quickly at



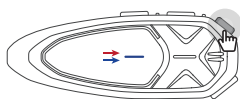
the same time. There is no memory function for this operation, the default 4-way intercom mode is used every time you turn on the device, and you need to long press the down button for about 6 seconds to switch it into mutli-way intercom mode every time when you need it.

Note: Prior to pairing units for communications before riding, we strongly suggest that existing connections be cleared from unit. To clear existing connections, Press and hold the Up Button and the Down Button at the same time for 2 seconds. The indicator light flashes red, all previous connections will be cleared from the unit.

Note: When 3-10 units are paired, due to the connection restriction only two of the units can connect with the mobile phone the other units will not be able to connect with the mobile phone.

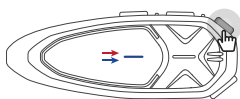
2-4 Ways Intercom Pairing And Connection :

The following pairing operations apply to Bluetooth group pairing parties of 2-4. In the standby mode, press and hold the Intercom Button on all units, until the LED quick flashes red and blue. Voice prompt "pairing".



Press and hold the Intercom Button for one second until the led quick flashes red and blue
(Unit One)

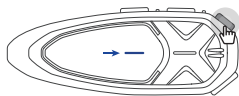
Pairing
.....



Press and hold the Intercom Button for one second until the led quick flashes red and blue
(Unit Two/Unit Three/Unit Four)

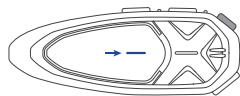
Click the Intercom Button on first unit to search other units, voice prompt "search", and the LED light flashes blue quickly and the first unit will prompt "pairing successful" then the other units prompt "search", and about 6s later will prompt "pairing successful".

Once the pairing is complete, the LED will blink blue slowly on all units.



LED flash blue quickly
(Unit One)

Paired
==

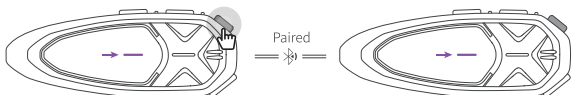


Wait until the LED flash blue quickly
(Unit Two/Unit Three/Unit Four)

Once the pairing is complete, the LED will blink blue slowly on all units

Start The Intercom Talk:

Once the pairing is successful, click the Intercom Button on one of the units to start an intercom talk. When in intercom mode, the LED light of all connected units will blink purple.



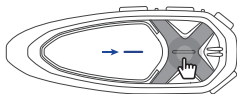
Click the Intercom Button , until LED flash blink purple
(Unit One)

Wait until the LED flashes blink purple
(Unit Two/Unit Three/Unit Four)

When in intercom mode, the LED light of all connected units will blink purple.

Exit The Intercom Talk:

Click the Power Button on any one of these units to make the device temporarily disconnect the current intercom. Click the intercom Button on any one of these units again to resume the intercom talk.



Click the Power Button until the LED flash blue
(any unit)

Note: Double click the Up Button to exit Bluetooth pairing mode. The device will return to standby mode.

5-10 multi-Ways Intercom Pairing And Connection :

Everytime you turn on the GTX device, the default is 4-way intercom mode, and to switch into the multi-way intercom mode which is for more than five riders (including five riders), in the standby state, you need to long press down button for about 6 seconds, there will be a beep and the indicator light flashes red quickly at the same time. There is no memory function for this operation, the default 4-way intercom mode is used every time you turn on the device, and you need to long press the down button for about 6 seconds to switch it into mutil-way intercom mode every time when you need it.

The following pairing operations apply to Bluetooth group pairing parties of 5-10.