



# Internal Photos

**EUT Name:** SISU Sense

**EUT Model:** EMG

**FCC ID:** 2ARCA2

**IC ID:** 24416-02

FCC Title 47, Part 15C:2018, RSS-210 Issue 9, ANSI C63.10:2013

***Prepared for:***

Adam Davis  
Akervall Technologies, Inc.  
1512 Woodland Drive  
Saline, MI 48176 USA  
Tel: 734-255-9697  
Fax:

***Prepared by:***

TUV Rheinland of North America  
762 Park Avenue  
Youngsville, NC 27596  
Tel: (919) 554-3668  
Fax: (919) 554-3542  
<http://www.tuv.com/>

***Report/Issue Date:*** 21 December 2018

***Report Number:*** Supplement to 31851225.001 - Internal Photos

## Internal Photos:

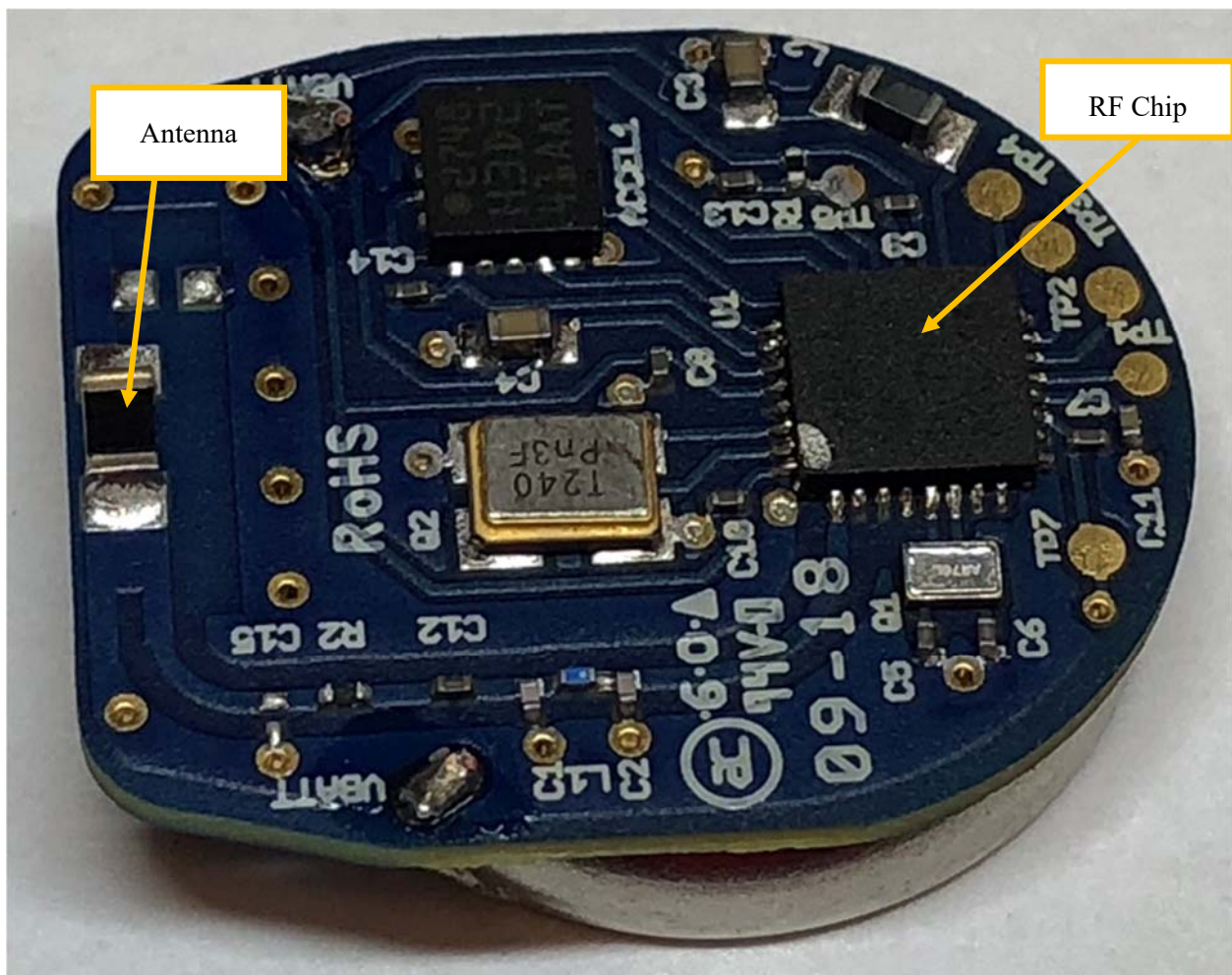


Figure 1 – Internal front view of EUT  
Unmodified EUT (Battery Soldered in place)

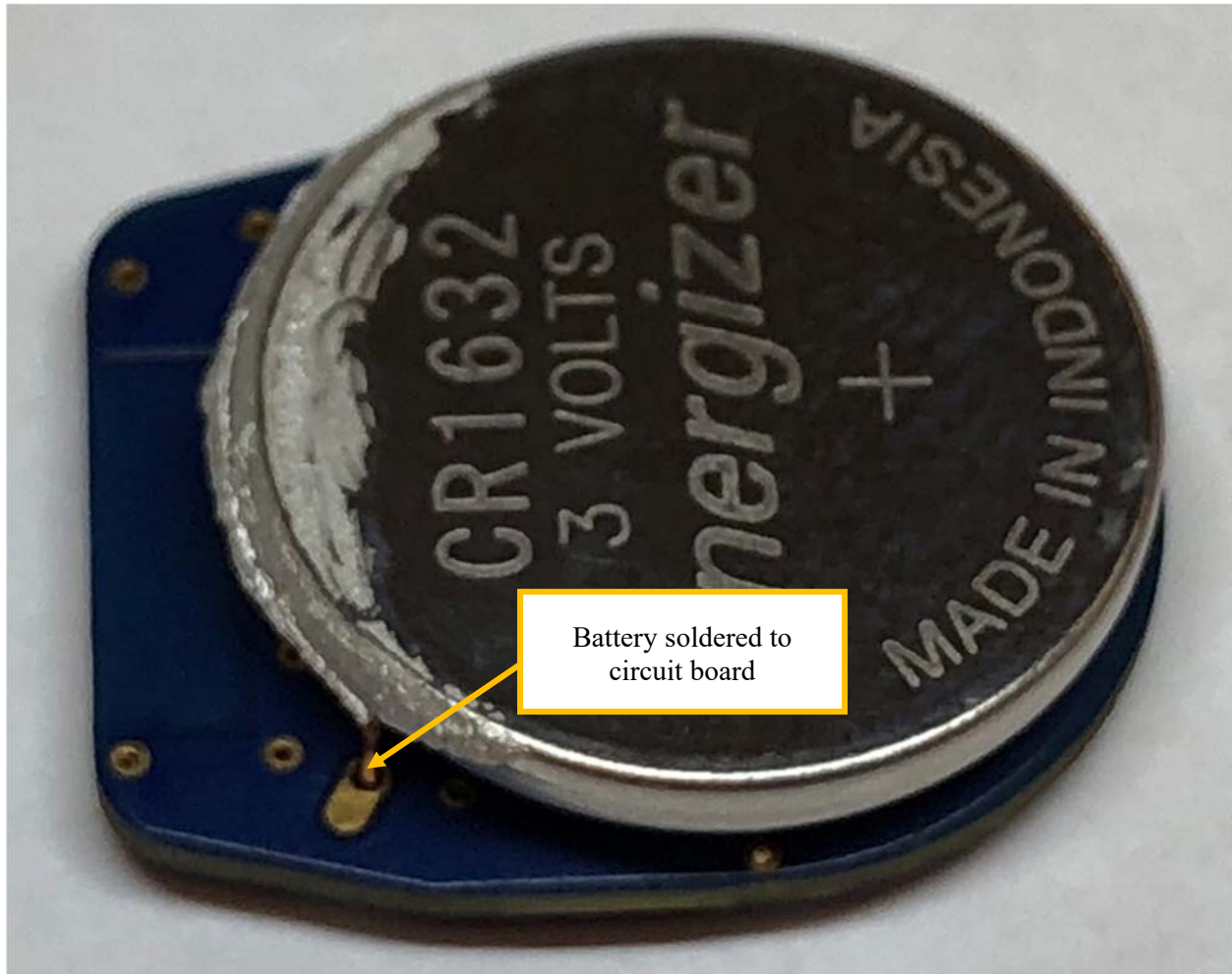


Figure 2 – Internal rear view of EUT (with battery installed)

Modified EUT for Conducted RF Transmitter testing with direct computer control interface, used for controlling the transmitter during testing.

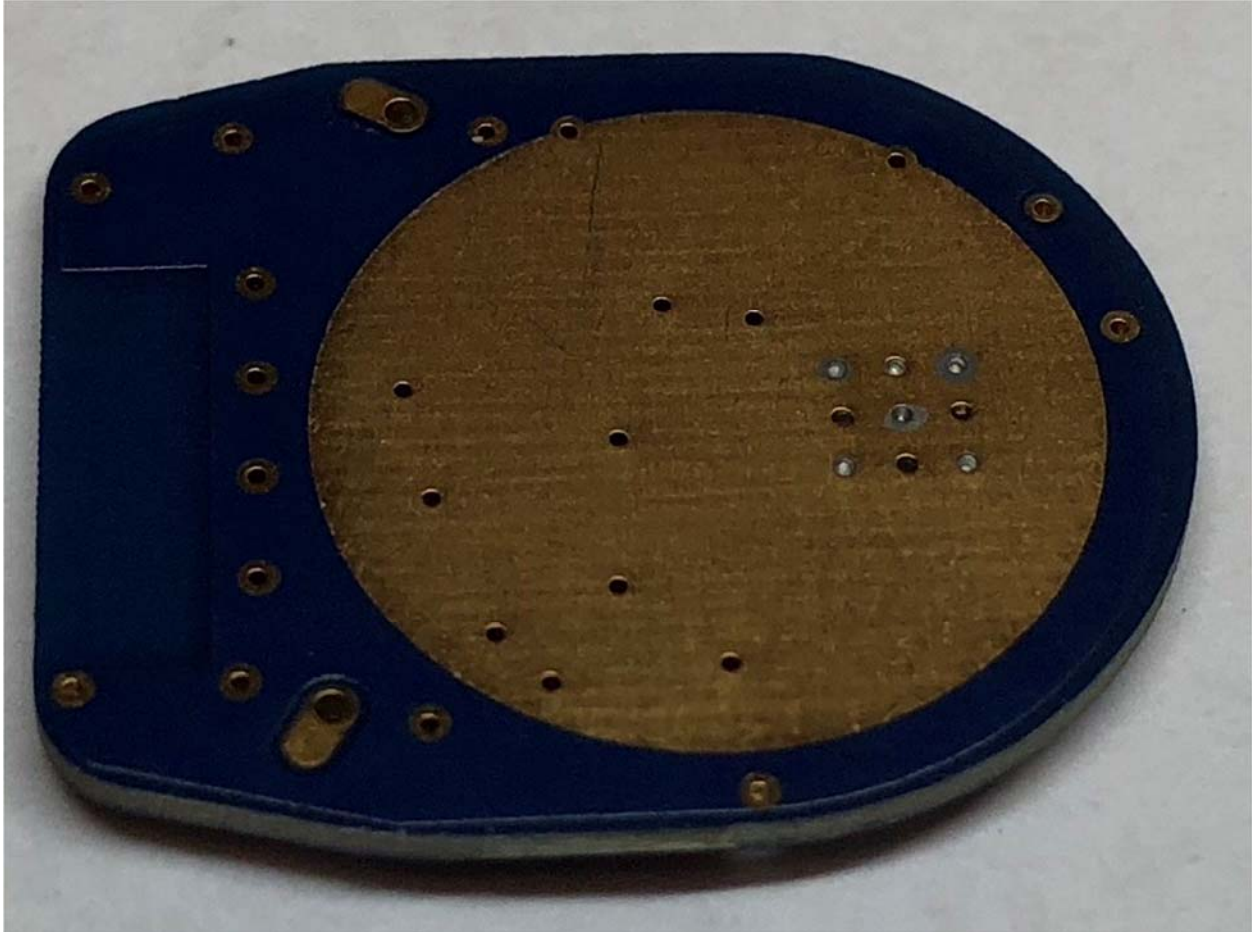


Figure 3 – Internal rear view of EUT (with battery removed)



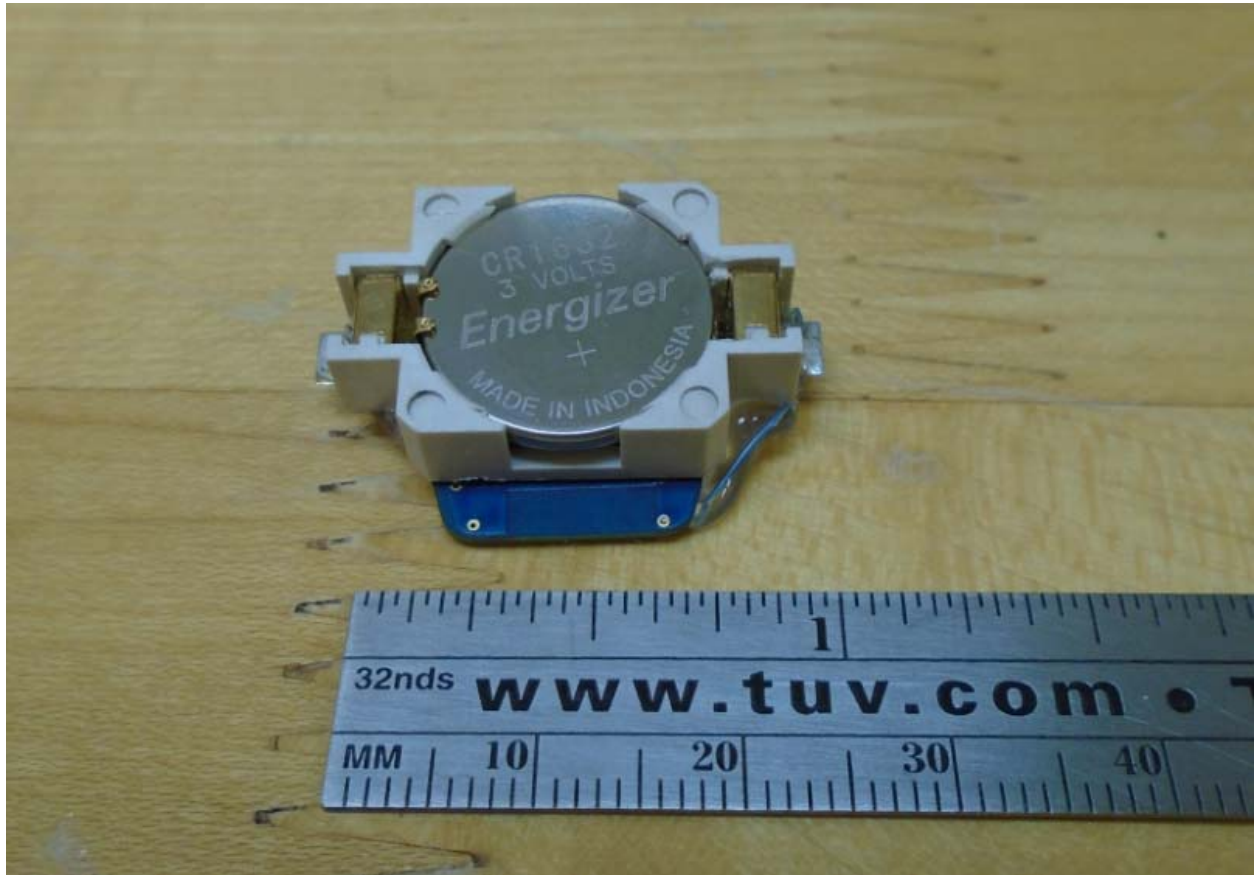


Figure 4 – View of EUT, modified for testing.

The battery replaced with a battery holder to allow for repeated fresh battery installation.