

Product Specifications (Wireless Charger )

( KC001 )

文件状态： [ ] 草案 [*] 正式文件 [ ] 修改文件	产品名称：	无线充电器 Wireless Charger      KC001
	版本号：	V3.0
	作者：	Michael.chen
	修订日期：	2016-10-12

目录

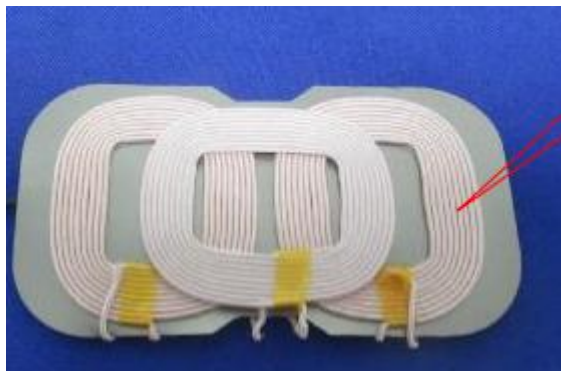
1. 产品概述 Product Overview	3
2. 线圈规格 Coil specification	3
3. 指示灯工作状态 Indicator light working status	4
4. 产品规格及参数 Product Specifications and Parameters	4
5. 测试报告 Test Report	6

## 1. 产品概述 Product Overview

本产品属于小功率无线充电器，通过电磁感应的方式实现短距离无线电能传输，适合给小功率（5V/1A）的数码电子产品进行无线充电，免去有线充电的繁琐。本产品符合 WPC 联盟的 Qi1.2 无线充电标准，可以为所有符合该标准的接收设备进行无线充电。This product is a low-power wireless charger that realizes short-distance wireless power transmission through electromagnetic induction. It is suitable for wireless charging of low-power(5V/1A) digital electronic products, eliminating the cumbersome cable charging. This product conforms to WPC Alliance's Qi 1.2 wireless charging standard and can be used for wireless charging of all receiving devices that meet this standard.

## 2. 线圈规格 Loop specifications

- 线圈型号 Coil type: A11
- 电感值 Inductance value:  $6.8\mu\text{H}\pm 5\%$
- 阻抗 impedance:  $20\text{m}\Omega$
- 高度 height: 2mm
- 隔磁片尺寸 Magnetic film size: 直径52mmX厚度0.3mm Diameter 52 mm X thickness 0.3 mm

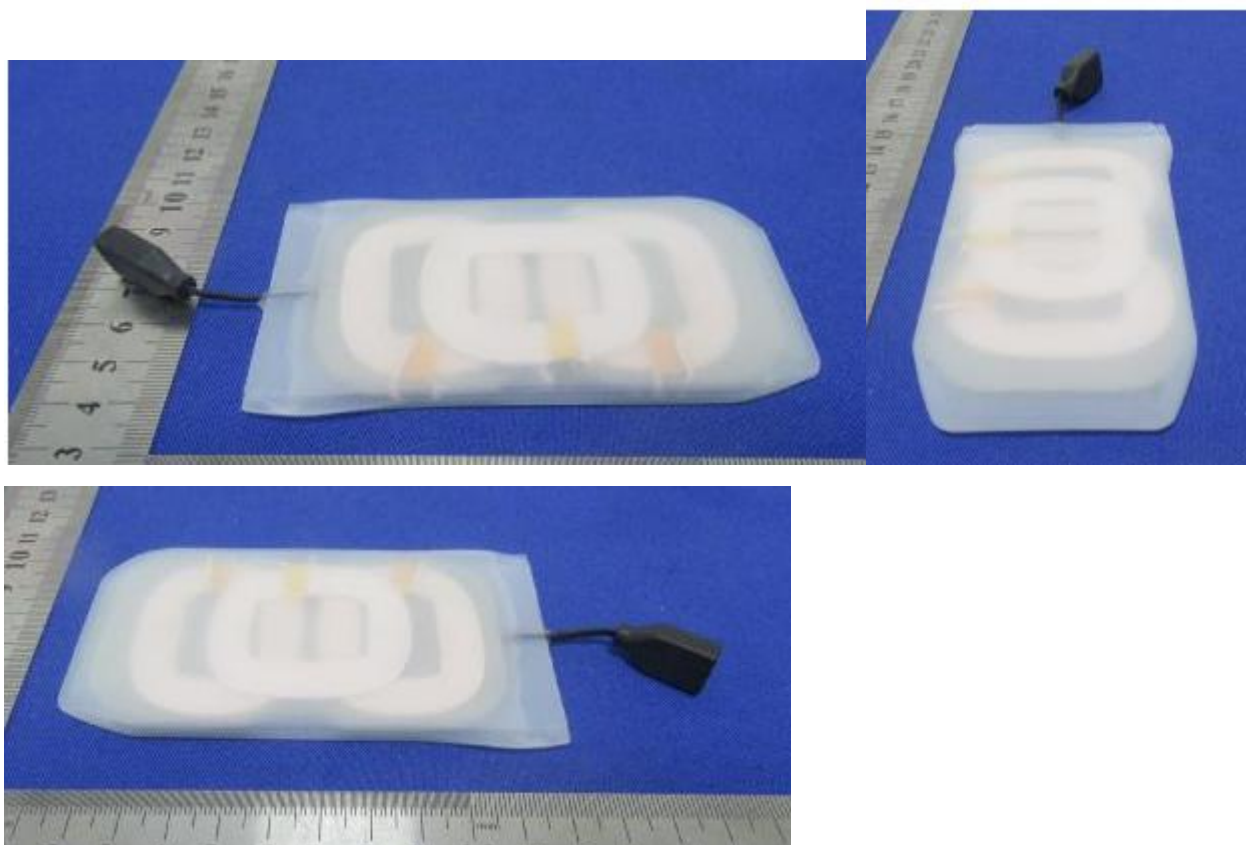


## 3. 指示灯工作状态 Indicator light working status

规格 specifications	LED	上电 power on	待机 power off	充电 charge	充满 Be filled
主板灯 Motherboard lamp	蓝色，绿色 Blue, green	蓝灯长亮 Blue light	蓝灯长亮 Blue light	绿灯长亮 Green light	灭 off
小板灯 Small plate lamp	白色 white (colour)	灭 off	灭 off	白灯长亮 White light	灭 off

## 4. 产品规格及参数 Product specifications and parameters

### (1) 外观图 outside view drawing



## (2) 规格尺寸 Specification size

产品尺寸: 118\*70\*87.5 (mm) Product size: 118U 70g 87.5 (mm)

产品净重: 150g Net product weight: 150g

产品毛重: 215g Gross product weight: 215g

## (3) 产品参数 Product parameters

输入电压: 5V/2A I

Input voltage: 5V/2A

工作频率: 120KHz~205KHz

Frequency: 120KHz~205KHz

接收距离: <8mm

Receiving distance: < 8mm

电转化效率:  $\geq 72\%$

Conversion efficiency:  $\geq 72\%$

输出功率: 5W

Output power: 5W

## FCC WARNING

This device complies with part 15 of the FCC Rules. Operation is subject to the following two conditions: (1) this device may not cause harmful interference, and (2) this device must accept any interference received, including interference that may cause undesired operation.

Any changes or modifications not expressly approved by the party responsible for compliance could void the user's authority to operate the equipment.

NOTE: This equipment has been tested and found to comply with the limits for a Class B digital device, pursuant to Part 15 of the FCC Rules. These limits are designed to provide reasonable protection against harmful interference in a residential installation. This equipment generates, uses and can radiate radio frequency energy and, if not installed and used in accordance with the instructions, may cause harmful interference to radio communications. However, there is no guarantee that interference will not occur in a particular installation. If this equipment does cause harmful interference to radio or television reception, which can be determined by turning the equipment off and on, the user is encouraged to try to correct the interference by one or more of the following measures:

- Reorient or relocate the receiving antenna.
- Increase the separation between the equipment and receiver.
- Connect the equipment into an outlet on a circuit different from that to which the receiver is connected.
- Consult the dealer or an experienced radio/TV technician for help.

To maintain compliance with FCC's RF Exposure guidelines, This equipment should be installed and operated with minimum 20cm distance between the radiator your body: Use only the supplied antenna.